



# CLIMATOLOGICAL DATA

## MARYLAND AND DELAWARE

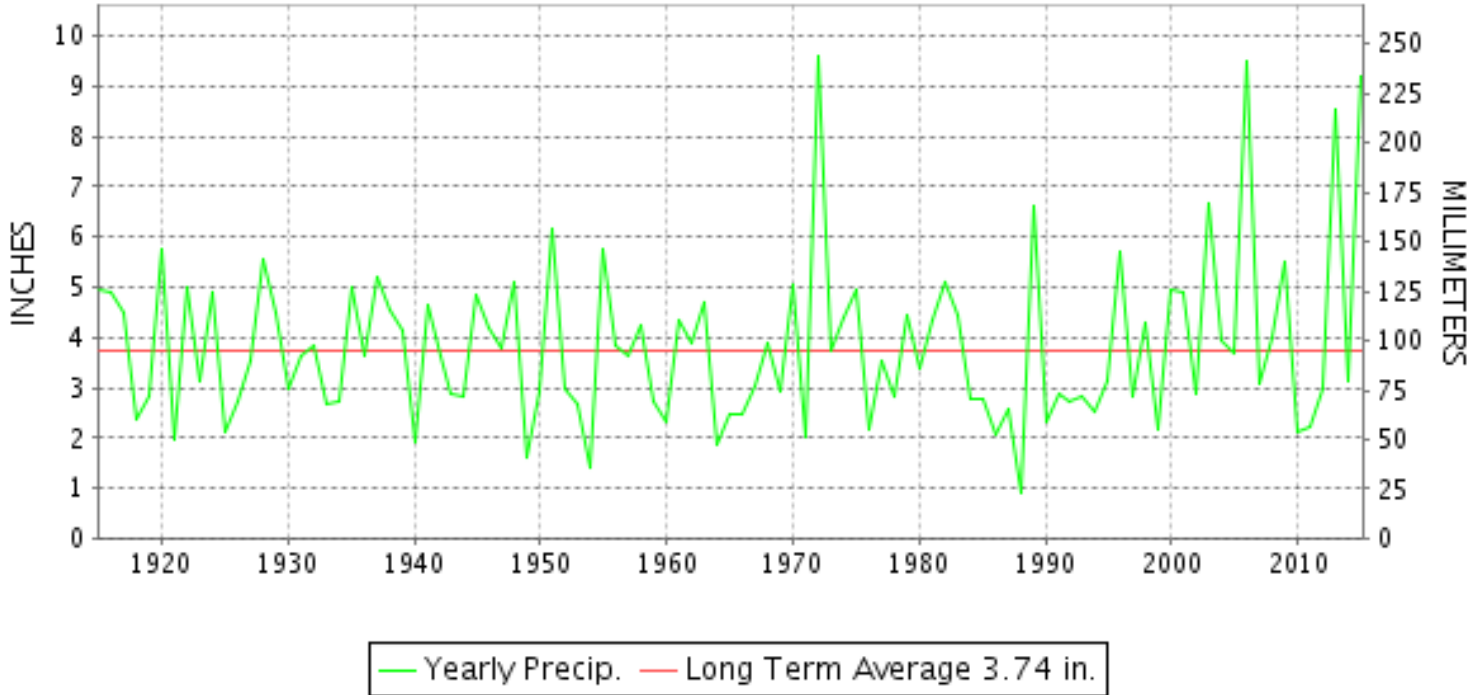
JUNE 2015

VOLUME 119 NUMBER 06

ISSN 0145-0549

GHCND Ver: 3.22-upd-2015091605

### JUNE PRECIPITATION BY YEAR



#### TEMPERATURE AND PRECIPITATION EXTREMES

##### MARYLAND

HIGHEST TEMPERATURE	97	JUNE 23	MARYLAND SCIENCE CENTER
LOWEST TEMPERATURE	46	JUNE 30+	SINES DEEP CREEK
GREATEST TOTAL PRECIPITATION	13.09		BALTIMORE WASH INTL AP
LEAST TOTAL PRECIPITATION	6.91		WILLIAMSPORT
GREATEST 1 DAY PRECIPITATION	3.15	JUNE 21	OXON HILL

"I certify that this is an official publication of the National Oceanic and Atmospheric Administration (NOAA) It is compiled using information from weather observing sites supervised by NOAA/National Weather Service and received at the National Centers for Environmental Information(NCEI), Asheville, North Carolina 28801."

Director  
National Centers for Environmental Information

noaa

National  
Oceanic and  
Atmospheric Administration

National  
Environmental Satellite, Data  
and Information Service

National  
Centers for Environmental Information  
Asheville, North Carolina

**DELAWARE**

HIGHEST TEMPERATURE

93

JUNE 23+

LOWEST TEMPERATURE

51

JUNE 02

GREATEST TOTAL PRECIPITATION

12.52

LEAST TOTAL PRECIPITATION

10.19

GREATEST 1 DAY PRECIPITATION

3.80

JUNE 01

2 STATIONS

WILMINGTON PORTER RSCH

WILMINGTON NEW CASTLE CO AP

DOVER

WILMINGTON NEW CASTLE CO AP

# MONTHLY STATION AND DIVISION SUMMARY

STATION	TEMPERATURE (°F)													PRECIPITATION (IN)																								
	AVERAGE MAXIMUM	AVERAGE MINIMUM	AVERAGE	DEPARTURE FROM NORMAL	HIGHEST	DATE	LOWEST	DATE	HEATING DEG. DAYS	COOLING DEG. DAYS	NO. OF DAYS				TOTAL	DEPARTURE FROM NORMAL	GREATEST 24 HOURS	DATE	ICE PELLETS, SNOW			NO. OF DAYS																
											MAX		MIN						TOTAL	MAX DEPTH ON GROUND	DATE	.10 OR MORE	.50 OR MORE	1.00 OR MORE														
											>=90	<=32	<=32	<=0																								
<b>MARYLAND SOUTHERN EASTERN SHORE 01</b>	M	M	M								0	0	0	0	M				0.0																			
ASSATEAGUE	83.8M	64.5M	74.2M	2.1	95	23	54	03	12E	292E	5	0	0	0	M 5.75	2.22	1.75	25	0.0										7	5	1							
PRINCESS ANNE	83.6	66.1	74.9	1.8	93	24+	54	07	14	315	7	0	0	0	8.99		2.26	21	0.0								10	5	4									
SALISBURY 2N	82.5	65.1	73.8	1.8	94	23	53	07	15	285	6	0	0	0	8.26	4.55	1.98	14	0.0		0						13	5	3									
SALISBURY FAA AP	85.6	66.2	75.9	2.3	95	23+	53	07	15	350	13	0	0	0	7.37	3.90	2.70	02	0.0								10	5	2									
SNOW HILL 4 N	--DIVISIONAL DATA----->		74.7	2.9B											8.21	4.83B																						
<b>CENTRAL EASTERN SHORE 02</b>																																						
ROYAL OAK 2 SSW	83.4	66.8	75.1	0.6	94	23	53	03	13	325	8	0	0	0	8.77	4.91	1.85	02	0.0		0						11	6	5									
PRINCESS ANNE	--DIVISIONAL DATA----->		75.1	2.2B											8.77	5.22B																						
<b>LOWER SOUTHERN 03</b>																																						
MECHANICSVILLE 5 NE	80.8	64.3	72.5	1.2	91	24	56	29+	21	253	3	0	0	0	9.56	5.49	1.50	28	M 0.0								12	8	5									
SOLOMONS	83.5	68.7	76.1	0.6	96	23	57	03+	10	352	7	0	0	0	11.61		2.12	01	0.0								14	7	5									
UPPER SOUTHERN 04	--DIVISIONAL DATA----->		74.3	2.6B											10.59	6.81B																						
<b>NORTHERN CENTRAL 06</b>																																						
ABERDEEN PHILLIPS FLD	82.9	65.4	74.1	1.7	94	23+	55	05+	14	296	6	0	0	0	13.09	9.63	3.11	27	0.0		0						12	7	5									
BELTSVILLE	82.1	65.2	73.7	0.8	93	24	55	04	20	287	7	0	0	0	11.49	7.79	2.36	02	0.0		0						14	7	4									
DALECARLIA RSVR	83.7M	66.4M	75.0M	0.9	95	24	56	05+	19E	326E	11	0	0	0	M 9.33	5.12	2.02	28	M 0.0		0						12	7	3									
LAUREL 3 W	83.9	66.3	75.1	1.3	96	14	54	05+	16	327	7	0	0	0	11.48	7.25	2.00	27+	0.0								14	6	4									
MARYLAND SCIENCE CENTER	83.8	68.8	76.3	0.2	97	23	56	03	10	354	7	0	0	0	7.64	4.37	2.83	27	0.0								10	3	3									
NATL ARBORETUM DC	85.0M	68.3M	76.6M	1.5	95	24	58	04+	9E	364E	12	0	0	0	M 12.90	8.82	2.85	02	M 0.0		0						12	7	5									
OXON HILL	83.3	66.4	74.9	0.5	93	24	56	04+	15	319	9	0	0	0	10.72	6.36	3.15	21	M 0.0		0						13	7	3									
UPPER MARLBORO 3 NNW	83.4	65.1	74.2	1.5	93	24+	55	04+	20	304	11	0	0	0	10.39	6.32	2.09	02	0.0								11	8	5									
UPPER MARLBORO 3 NNW	--DIVISIONAL DATA----->		75.0	2.7B											10.80	7.14B																						
<b>NORTHERN CENTRAL 06</b>																																						
ABERDEEN PHILLIPS FLD	81.8	65.0	73.4	1.2	92	24+	54	05	16	276	5	0	0	0	11.24	7.42	2.42	28	0.0		0						12	8	5									
BRIGHTON DAM	80.2	62.3	71.2		91	24+	52	03	27	223	3	0	0	0	10.52		2.43	02	M 0.0		0						14	6	4									
CONOWINGO DAM	80.2	63.2	71.7	-2.0	90	23	54	04+	19	228	1	0	0	0	8.78	4.60	2.35	27	0.0								9	7	4									
CYLBURN	78.9	64.8	71.9	1.8	91	24	54	06+	26	238	2	0	0	0	A 10.06		3.01	28	0.0								5	4	2									
DAMASCUS 3 SSW	79.2	62.8	71.0	0.6	91	23	53	04	25	211	3	0	0	0	10.77	6.63	2.78	01	0.0		0						14	5	4									
EMMITSBURG 2 SE	80.5	61.7	71.1	1.3	90	13	51	08+	22	212	1	0	0	0	10.61	6.69	2.68	28	0.0		0						13	7	5									
FREDERICK 2 NNE	M	M	M												M				0.0																			
MILLERS 4 NE	80.2	62.2	71.2	1.8	89	12+	52	05+	20	214	0	0	0	0	7.67	4.28	1.55	26	0.0		0						11	7	3									
SMITHSBURG 2NW	80.1M	61.6M	70.8M	0.3	90	13+	53	05	34E	219E	2	0	0	0	M 7.00	2.81	1.55	21	0.0								11	5	3									
SMITHSBURG 2NW	--DIVISIONAL DATA----->		71.5	0.8B											9.95	5.90B																						



DAILY PRECIPITATION (INCHES)

STATION	TOTAL	DAY OF MONTH																															
		01	02	03	04	05	06	07	08	09	10	11	12	13	14	15	16	17	18	19	20	21	22	23	24	25	26	27	28	29	30	31	
<b>MARYLAND</b>																																	
<b>SOUTHERN</b>																																	
<b>EASTERN SHORE 01</b>																																	
ASSATEAGUE	M	-	-	-	-	-	-	-	-	-	-	-	-	-	-	-	-	-	-	-	-	-	-	-	-	-	-	-	-	-	-	-	
PRINCESS ANNE	M 5.75	0.89	0.92	0.02	0.01				0.11						0.82	0.08								0.85		1.75	0.30						
SALISBURY 2N	8.99	1.71	1.38	0.04	0.02	0.37			0.05	0.02					0.51	0.01		0.30	0.02	0.25	2.26			0.45		1.23	0.07	0.30					
SALISBURY FAA AP	8.26	1.10	0.27	0.17	0.05	T	0.21		0.04					1.98	0.01	0.03		0.10	0.15	1.74	0.62		0.45		0.21	0.81	0.29	0.03					
SNOW HILL 4 N	7.37		2.70	0.75	0.20	0.02	0.57		0.04					T	0.14	T	0.19				0.09	1.46		0.69		0.36	0.11	0.05					
<b>CENTRAL</b>																																	
<b>EASTERN SHORE 02</b>																																	
ROYAL OAK 2 SSW	8.77		1.85	0.20	0.09		0.11		0.04					0.12	0.15	0.01		0.54				1.30		1.31		1.18	1.72				0.15		
<b>LOWER SOUTHERN 03</b>																																	
MECHANICSVILLE 5 NE	9.56		0.92	0.81	0.18	1.05	0.01	0.03	0.06					0.23	T	0.02	0.06	0.13	1.22		1.29	1.29		1.01		0.76	0.28	1.50					
SOLOMONS	11.61	2.12	0.15	0.07	0.34	0.02			0.14				0.30	0.01	1.43	T	0.33	0.72		1.27		1.91		0.70	0.23	1.52				0.35			
<b>UPPER SOUTHERN 04</b>																																	
BALTIMORE WASH INTL AP	13.09	2.50	0.55	0.07	0.15	0.14	T		1.30					0.04	0.10		0.47	0.88	0.06	1.92	0.09	1.30		0.41		3.11	T		T				
BELTSVILLE	11.49	0.16	2.36	0.15	0.07	0.47	0.22		0.72					0.31	0.07	0.03		0.51	1.11		1.62		0.73		0.47	0.30	2.19						
DALECARLIA RSVR	M 9.33		1.03	0.20	0.08	0.30			0.05	0.86					0.85	0.05		0.15	0.35		1.51		0.83	0.02	0.83	0.20	2.02		-				
LAUREL 3 W	11.48	1.32	0.35	0.06	0.49	0.46			0.92					0.30	0.10		0.03	0.97		2.00	0.31	1.54		0.40		2.00				0.23			
MARYLAND SCIENCE CENTER	7.64	0.48	0.30	0.06	0.09	0.09			0.31					0.24	0.04		0.16	0.11		1.09	0.08	1.29		0.43		2.83	0.04						
NATL ARBORETUM DC	M 12.90	T	2.85	0.05	0.18	0.42	0.03		1.02				-	0.01	0.30		T	0.27	0.72	T	2.50		1.10		0.65	0.19	2.61						
OXON HILL	10.72	0.03	1.67	0.14	0.11	0.50	T		0.20				0.02	T	0.41	0.01		0.30	0.67	T	3.15		0.57		0.69	0.23	2.02						
UPPER MARLBORO 3 NNW	10.39	T	2.09	0.09	0.02	0.65			0.16	0.69		0.01			0.21	0.02				0.33	1.00		1.03		0.70		1.83						
<b>NORTHERN CENTRAL 06</b>																																	
ABERDEEN PHILLIPS FLD	11.24	1.11	0.97	0.23	0.02	0.24	0.02		1.25						1.68	0.05		0.70	0.28		1.44		0.72		0.11		2.42						
BRIGHTON DAM	10.52	0.11	2.43	0.15	0.07	0.40			0.22					0.35	0.04	0.03		0.55	0.53		1.30		1.33		0.30	0.30	2.10			0.31			
CONOWINGO DAM	8.78	1.18							1.22					0.28			0.65			0.73		0.46		0.53		2.35				1.38			
CYLBURN	A 10.06	*	1.74 <sub>a</sub>	0.11	*	0.13 <sub>a</sub>	0.02	*	1.13 <sub>a</sub>					*	*	0.59 <sub>a</sub>		0.54	0.03		0.95		1.31		*	0.50 <sub>a</sub>	3.01						
DAMASCUS 3 SSW	10.77	2.78	0.30	T	0.20	0.08			0.32					0.17	0.16		T	0.75	0.16	1.04	0.21	1.67		0.48		2.33	0.12						
EMMITSBURG 2 SE	10.61	1.26	1.36	0.21	T	0.18	0.05		0.59				0.06	0.12	1.23	0.07		0.36	0.66		1.37		0.05		0.22	0.14	2.68						
FREDERICK 2 NNE	M	-	-	-	-	-	-	-	-	-	-	-	-	-	-	-	-	-	-	-	-	-	-	-	-	-	-	-	-	-	-	-	
MILLERS 4 NE	7.67	0.58	0.78	0.02	0.06	0.04			0.61			0.06	0.04	0.10	0.22		T	1.06	0.62	0.03	0.38	0.01	0.05	0.01	1.55	1.19	0.26			T			
SMITHSBURG 2NW	M 7.00	1.15	1.40	0.32	0.05	0.10	-	-	0.35				0.55		-	0.20		0.45	0.25		1.55		0.63	-	-	-	-	-	-	-	-		
<b>APPALACHIAN</b>																																	
<b>MOUNTAIN 07</b>																																	
CUMBERLAND 2	8.07	0.40	0.16	0.09	0.03	0.01	0.10		0.10				0.01		1.46	0.10	0.06	0.40	0.40	T	0.48		0.44		0.10	1.61	2.10	0.01	0.01				
FROSTBURG 2	8.73	0.12	0.22	0.19	0.08	0.05	0.26		0.12				0.06	0.02	1.50	0.10		0.51	0.52	0.03	1.27		0.53		0.08	0.86	1.99	0.07	0.15				
SHARPSBURG 5 S	A 9.02	0.26	1.58	0.33	0.02	0.56			0.91		*	*	*	*	*	*	*	1.27 <sub>a</sub>	0.28		1.57		0.26		0.31	0.26	1.41						
WILLIAMSPORT	MA 6.91	0.60	0.57	0.34	*	0.18 <sub>a</sub>			0.37				0.40	*	0.26 <sub>a</sub>	0.19	0.04	0.26	0.25	0.01	0.65		0.04		0.31	0.19	2.25		-				
<b>ALLEGHENY PLATEAU 08</b>																																	
OAKLAND 1 SE	10.63	0.43	0.64	0.04	0.01		0.06		0.26	0.02			0.75	0.80	0.23	0.60	0.10	0.53	0.35	0.29	1.78	0.02	0.53		0.11	0.49	0.95	1.38	0.26				
SAVAGE RIVER DAM	M 9.02	0.33	0.15	0.07	0.04		0.53	T	0.13				0.30	0.15	0.61	0.59	0.12	0.51	0.39	0.12	2.24	-	0.88	-	0.07	-	1.72	T	0.07				

DAILY PRECIPITATION (INCHES)

STATION	TOTAL	DAY OF MONTH																														
		01	02	03	04	05	06	07	08	09	10	11	12	13	14	15	16	17	18	19	20	21	22	23	24	25	26	27	28	29	30	31
SINES DEEP CREEK	MA 10.46	0.94 <sub>a</sub>	0.06	0.15			*	*	0.18 <sub>a</sub>	0.55	0.03	-		*	*	1.25 <sub>a</sub>	0.40	0.13	0.40	0.61	*	*	2.25 <sub>a</sub>	0.02	0.34	-	0.34	*	*	2.65 <sub>a</sub>	0.16	
DELAWARE NORTHERN 01																																
WILMINGTON NEW CASTLE CO AP	12.52	3.80	0.29	0.27	0.48	T	T		1.49	T					0.30	0.10	0.60	0.02	0.98	0.20	0.50	0.15		0.69		0.38	T	2.17	0.09		0.01	
WILMINGTON PORTER RSCH	M 11.33	3.02	0.56	0.04	0.25	0.33	T		0.53	0.40					0.50	0.15	T		1.11	0.30	0.35	0.50		0.65		0.11		2.45	0.08		-	
SOUTHERN 02																																
DOVER	A 10.19	0.22	3.38	0.06	0.03	0.21	0.03			0.89					0.75	0.32	0.28	T	0.65	0.08		0.85		0.88		0.71	*	0.85 <sub>a</sub>		T		

DAILY TEMPERATURES (°F)

STATION	OB. TIME	MAX/MIN	DAY OF MONTH																															AVERAGE		
			01	02	03	04	05	06	07	08	09	10	11	12	13	14	15	16	17	18	19	20	21	22	23	24	25	26	27	28	29	30	31			
<b>MARYLAND SOUTHERN EASTERN SHORE 01</b> ASSATEAGUE	VA	MAX MIN																																		M M
PRINCESS ANNE	17	MAX MIN	90 67	86 56	72 54	62 58	66 59	84 60		84 60	83 67	82 61	90 61	91 72		88 72	92 72	88 69	87 69	88 70			89 73	95 70	81 65	81 63	83 61				80 61	86 63	83.8 64.5			
SALISBURY 2N	17	MAX MIN	89 70	85 59	62 56	62 57	66 58	78 62	75 54	82 58	84 68	84 66	90 74	91 73	90 73	88 72	92 67	87 70	86 88	86 88	87 71	87 72	88 71	88 72	93 74	93 69	85 62	81 69	78 63	79 63	79 60	80 66	86 66	83.6 66.1		
SALISBURY FAA AP	24	MAX MIN	90 67	71 56	62 56	62 58	66 59	80 56	75 53	83 59	84 68	82 61	90 61	91 72	88 73	88 72	92 71	82 68	87 69	86 70	87 71	89 72	89 73	94 70	81 65	85 62	76 64	78 63	80 67	80 61	86 63	86 63	82.5 65.1			
SNOW HILL 4 N	17	MAX MIN	90 69	83 60	62 55	63 54	67 59	81 59	75 53	81 58	87 69	87 62	92 64	93 73	93 74	93 72	91 73	95 71	94 68	89 70	90 71	88 72	90 73	91 73	95 73	94 69	87 62	84 70	81 67	84 72	84 59	85 64	85.6 66.2			
<b>CENTRAL EASTERN SHORE 02</b> ROYAL OAK 2 SSW	17	MAX MIN	89 73	76 56	62 53	63 56	72 56	80 60	76 57	83 63	85 70	82 62	90 66	92 73	89 72	90 73	91 75	87 75	87 69	85 70	90 73	90 71	89 73	94 69	83 69	85 63	79 68	76 66	79 68	83 64	86 69	83.4 66.8				
<b>LOWER SOUTHERN 03</b> MECHANICSVILLE 5 NE	07	MAX MIN	87 72	87 62	62 56	60 56	61 57	69 57	77 58	75 59	83 61	83 59	79 60	88 65	90 71	87 71	87 71	87 69	90 68	82 68	85 70	83 70	86 71	88 70	87 71	87 70	91 67	79 61	83 62	76 64	74 66	77 56	80 60	80.8 64.3		
SOLOMONS	08	MAX MIN	87 67	74 57	61 57	62 59	71 59	78 62	74 64	84 69	86 65	82 69	91 74	92 75	89 71	89 74	92 74	93 70	85 70	89 75	86 71	87 77	90 78	90 69	96 70	83 68	86 70	78 68	79 69	81 64	83 72	87 69	83.5 68.7			
<b>UPPER SOUTHERN 04</b> BALTIMORE WASH INTL AP	24	MAX MIN	86 67	67 56	62 55	64 56	74 55	80 61	75 64	87 60	84 66	84 61	93 65	94 71	89 73	91 73	89 74	93 72	85 68	85 69	85 70	87 70	90 72	89 71	94 71	83 65	82 62	78 66	70 64	77 63	82 59	87 63	82.9 65.4			
BELTSVILLE	08	MAX MIN	90 70	87 60	60 56	61 55	63 56	71 57	79 65	76 61	85 68	84 59	82 64	92 69	92 71	88 73	91 73	88 71	91 69	82 70	86 70	84 71	87 71	90 72	89 64	93 62	82 65	83 64	78 61	71 56	77 62	81 62	81 62	82.1 65.2		
DALECARLIA RSVR	08	MAX MIN	90 70	91 63	63 56	60 56	62 58	71 63	80 63	78 63	87 67	85 61	84 67	94 71	93 72	87 73	93 73	89 69	91 69	83 71	90 71	85 71	91 72	92 74	90 65	85 65	82 65	85 64	78 63	73 63	84 67	84 67	83.7 66.4			
LAUREL 3 W	24	MAX MIN	89 72	78 56	60 54	63 54	72 54	81 62	77 64	86 60	86 69	84 64	92 70	93 74	88 76	96 73	89 74	92 73	84 70	87 69	86 71	88 72	89 69	91 70	95 72	93 65	83 67	78 64	71 63	77 62	82 59	88 67	83.9 66.3			
MARYLAND SCIENCE CENTER	24	MAX MIN	86 66	67 58	64 56	66 58	73 57	80 66	77 67	88 64	86 71	85 70	95 71	95 77	89 77	89 75	90 73	85 70	86 74	86 77	86 73	87 73	92 77	91 73	97 73	85 70	83 67	79 65	73 66	78 62	83 62	87 71	83.8 68.8			
NATL ARBORETUM DC	07	MAX MIN	91 72	92 70	70 58	62 58	65 60	72 63	83 66	78 62	88 66	88 66					94 74	94 74	93 75	92 75	93 66	87 70	91 71	93 75	87 75	91 69	85 70	86 68	80 67	83 64	79 64	84 61	84 61	85.0 68.3		
OXON HILL	08	MAX MIN	89 70	90 68	69 56	60 56	63 57	71 57	82 64	77 61	87 62	86 63	83 64	91 68	92 72	89 73	91 74	91 72	92 68	80 70	89 72	85 72	88 75	90 75	93 70	83 64	84 66	84 65	79 65	75 64	77 58	83 64	83 64	83.3 66.4		
UPPER MARLBORO 3 NNW	08	MAX MIN	90 71	91 62	62 55	61 55	62 56	71 56	80 61	78 59	86 66	86 60	84 64	92 72	92 71	90 73	91 73	91 72	93 68	83 69	89 67	86 69	88 71	91 73	91 71	93 67	83 62	85 61	78 64	74 62	79 57	82 65	83.4 65.1			
<b>NORTHERN CENTRAL 06</b> ABERDEEN PHILLIPS FLD	07	MAX MIN	89 69	86 56	58 55	65 56	68 54	73 56	79 61	75 61	83 63	85 60	83 63	90 70	92 72	86 71	88 73	88 75	92 69	85 68	77 68	85 70	86 72	88 74	90 65	92 61	83 66	81 68	80 64	69 57	76 62	81 62	81.8 65.0			

DAILY TEMPERATURES (°F)

STATION	OB. TIME	MAX/MIN	DAY OF MONTH																															AVERAGE
			01	02	03	04	05	06	07	08	09	10	11	12	13	14	15	16	17	18	19	20	21	22	23	24	25	26	27	28	29	30	31	
BRIGHTON DAM	08	MAX	87	85	60	60	62	71	77	74	71	82	81	90	91	86	89	87	88	81	88	83	85	88	88	91	81	80	78	67	74	80	80.2	
		MIN	68	57	52	53	54	56	58	58	66	58	62	65	68	71	71	68	65	67	67	68	68	67	61	59	62	63	61	54	61	62.3		
CONOWINGO DAM	07	MAX	80	57	65	67	72	79	74	82	83	82	89	89	84	86	87	89	82	76	84	84	87	88	90	82	80	81	69	77	80	80	80.2	
		MIN	54	54	55	54	55	55	60	63	57	61	65	70	72	71	72	66	67	67	67	69	69	72	67	61	64	65	60	58	60	66	63.2	
CYLBURN	08	MAX	87	83	57	60	62	71	74	73	83	80	80	89	90	82	85	82	86	86	81	79	84	86	85	91	79	79	75	67	73	79	78.9	
		MIN	67	57	54	54	54	54	64	60	66	62	67	70	73	71	71	72	67	67	69	71	71	71	73	63	61	63	65	63	58	65	64.8	
DAMASCUS 3 SSW	22	MAX	82	66	58	60	69	73	75	85	80	81	90	90	84	88	85	86	77	85	81	84	87	86	91	80	77	74	67	72	79	84	79.2	
		MIN	66	54	54	53	54	60	57	60	66	59	65	70	70	68	71	69	64	66	67	67	69	66	69	60	59	62	62	59	54	63	62.8	
EMMITSBURG 2 SE	07	MAX	87	85	65	63	61	74	75	74	85	82	81	89	90	84	87	88	86	80	84	85	86	88	88	89	81	78	78	67	74	80	80.5	
		MIN	65	57	57	57	55	55	51	51	62	58	58	66	66	70	70	71	65	65	68	68	70	67	67	61	58	58	64	58	55	61.7		
FREDERICK 2 NNE	07	MAX																															M	
		MIN																																M
MILLERS 4 NE	18	MAX	82	70	62	62	75	76	75	83	81	80	89	89	83	87	85	85	82	83	82	84	87	86	88	80	79	79	78	73	78	82	80.2	
		MIN	65	53	54	52	52	60	53	59	64	59	65	67	70	68	70	71	64	65	65	68	70	66	69	61	58	61	60	53	63	62.2		
SMITHSBURG 2NW	08	MAX	85	82	60	60	58				76	85	80	81	90	84		85	84	78	84	82	86	87	87	89						80.1		
		MIN	64	56	55	54	53				62	66	56	62	66	67	67		69	60	65	65	67	64	64	57						54	61.6	
<b>APPALACHIAN MOUNTAIN 07</b>																																		
CUMBERLAND 2	18	MAX	86	83	64	64	64	76	78	82	91	81	87	95	92	92	87	87	83	76	87	81	83	89	92	91	85	72	83	69	75	85	82.0	
		MIN	65	58	57	57	58	58	52	53	66	56	58	66	58	68	68	68	70	62	62	67	68	68	68	62	62	62	66	61	55	55	62.1	
FROSTBURG 2	07	MAX	80	80	57	55	56	69	71	76	82	72	81	88	84	80	79	80	77	69	80	74	74	79	83	83	75	70	73	62	64	76	74.3	
		MIN	60	53	51	52	52	53	49	53	59	55	56	64	64	63	63	66	56	58	63	62	64	66	66	55	55	59	62	55	52	55	58.0	
SHARPSBURG 5 S	07	MAX	88	84	62	60	60	75	77	78	87	81	83	91	92	87	88	85	87	80	87	84	87	88	88	91	82	79	79	70	71	81	81.1	
		MIN	64	59	56	56	55	58	49	51	65	55	57	64	66	67	68	69	61	62	67	67	67	66	67	57	57	58	63	58	52	52	60.4	
<b>ALLEGHENY PLATEAU 08</b>																																		
OAKLAND 1 SE	07	MAX	78	73	60	57	63	72	74	82	78	70	79	85	84	79	80	79	75	71	79	75	77	79	81	82	76	72	70	68	62	68	74.3	
		MIN	57	53	51	55	53	55	49	59	64	52	52	59	59	60	65	67	67	63	62	62	62	65	65	58	58	61	58	62	54	55	58.7	
SAVAGE RIVER DAM	08	MAX	78	76	61	57	59	73	75	77	81	75	81	86	86	80	81	83	81	69	82	76	76		83	84	77	73		66	63	75	75.5	
		MIN	62	56	53	54	54	55	51	51	62	54	55	61	64	63	63	69	60	60	65	65	65		65	57	56	56		58	52	52	58.5	
SINES DEEP CREEK	07	MAX	79	71	61	60	66				80	80	71		84		82	79	77	70	79			78	80	81		68		72	73	M		
		MIN	53	53	53	53	53				46	58	48		56		56	65	58	58	62			65	62	54		53		47	46	M		
<b>DELAWARE NORTHERN 01</b>																																		
WILMINGTON NEW CASTLE CO AP	24	MAX	82	59	67	69	73	81	74	84	85	83	90	91	86	88	88	90	82	74	86	84	89	88	92	84	82	81	69	77	81	84	81.4	
		MIN	59	53	53	55	55	64	58	61	66	60	67	73	74	72	73	72	67	65	69	70	73	70	69	63	62	66	63	65	60	65	64.7	
WILMINGTON PORTER RSCH	24	MAX	80	59	66	66	72	79	76	83	83	83	90	92	87	88	87	89	83	72	85	76	87	88	93	82	84	80	70	76	78	80.5		
		MIN	58	51	53	55	53	63	58	60	66	64	67	73	74	71	72	73	67	64	68	68	74	70	70	66	66	65	61	64	58	64.6		
<b>DELAWARE SOUTHERN 02</b>																																		
DOVER	16	MAX	87	84	63	63	70	76	73	82	84	84	91	92	92	85	86	90	90	77	86	86	88	89	93	92	84	78	78	79	81	86	83.0	
		MIN	67	55	53	58	55	59	56	59	67	62	66	74	72	70	74	74	68	66	70	72	70	73	75	66	64	66	66	68	60	67	65.7	



## SNOWFALL AND SNOW ON GROUND (INCHES)

STATION		DAY OF MONTH																														
		01	02	03	04	05	06	07	08	09	10	11	12	13	14	15	16	17	18	19	20	21	22	23	24	25	26	27	28	29	30	31
<b>MARYLAND</b> <b>SOUTHERN</b> <b>EASTERN SHORE 01</b> ASSATEAGUE PRINCESS ANNE SALISBURY 2N SALISBURY FAA AP SNOW HILL 4 N	SNOWFALL																															
	SNOWFALL																															
	SNOWFALL																															
	SN ON GND																															
	SNOWFALL																															
<b>DELAWARE</b> <b>NORTHERN 01</b> WILMINGTON NEW CASTLE CO AP WILMINGTON PORTER RSCH	SNOWFALL																															
	SN ON GND																															
	SNOWFALL																															
	SN ON GND																															

Snowfall: Includes snow and ice. Values for NWS stations (J index note) are Mid-Mid (LST).

Snow on ground: Includes snow, sleet, ice, and hail. Values for NWS stations (J index note) are observed at 12 UTC (GMT).

Water Equivalent: Given for NWS stations (J index note) only, when snow depth is 2 inches or more, and is measured at 18 UTC (GMT)

## PAN EVAPORATION AND WIND

STATION		DAY OF MONTH																															TOTAL OR AVERAGE
		01	02	03	04	05	06	07	08	09	10	11	12	13	14	15	16	17	18	19	20	21	22	23	24	25	26	27	28	29	30	31	
MARYLAND UPPER SOUTHERN 04 BELTSVILLE	WIND	87	54	62	44	44	23	66	85	105	73	42	36	64	36	22	36	71	34	30	46	53	50	36	63	39	38	30	47	55	41	1512	
	EVAP	0.24	-	0.06	0.04	0.02	0.05	0.22	0.24	0.33	0.32	0.23	0.23	0.31	0.25	0.19	0.14	0.31	0.13	0.31	0.21	-	0.26	0.27	0.37	0.26	0.23	0.12	-	0.21	0.23	6.42E	
	MAX	89	89	66	61	63	72	84	78	87	86	86	94	94	91	96	90	92	85	90	88	92	93	94	95	90	84	81	69	81	87	84.9	
	MIN	62	65	56	45	56	56	63	59	60	62	64	67	72	74	72	68	69	70	72	71	72	72	67	65	66	66	63	59	60	64.8		
UPPER MARLBORO 3 NNW	WIND	-	-	-	-	-	-	-	-	-	-	-	-	-	-	-	-	-	-	-	-	-	-	-	-	-	-	-	-	-	M		
	EVAP	-	-	-	-	-	-	-	-	-	-	-	-	-	-	-	-	-	-	-	-	-	-	-	-	-	-	-	-	-	M		
	MAX	-	-	-	-	-	-	-	-	-	-	-	-	-	-	-	-	-	-	-	-	-	-	-	-	-	-	-	-	-	M		
	MIN	-	-	-	-	-	-	-	-	-	-	-	-	-	-	-	-	-	-	-	-	-	-	-	-	-	-	-	-	-	M		
ALLEGHENY PLATEAU 08 SAVAGE RIVER DAM	WIND	-	-	-	-	-	-	-	-	-	-	-	-	-	-	-	-	-	-	-	-	-	-	-	-	-	-	-	-	-	M		
	EVAP	-	-	-	-	-	-	-	-	-	-	-	-	-	-	-	-	-	-	-	-	-	-	-	-	-	-	-	-	-	M		
	MAX	-	-	-	-	-	-	-	-	-	-	-	-	-	-	-	-	-	-	-	-	-	-	-	-	-	-	-	-	-	-		
	MIN	-	-	-	-	-	-	-	-	-	-	-	-	-	-	-	-	-	-	-	-	-	-	-	-	-	-	-	-	-	M		

Evaporation: Is measured in hundredths of inches.

Wind: Is measured in miles.

Max and Min: The maximum and minimum temperatures (Fahrenheit) of the water in the evaporation pan.

# STATION INDEX

STATION	INDEX NO.	DIVISION	COUNTY	LATITUDE	LONGITUDE	ELEVATION (IN FEET)	OBSERVATION TIME AND TABLES			
							LOCAL STD TIME			
							TEMP	PRECIP	EVAP	SPECIAL SEE (NOTES)
MARYLAND										
ABERDEEN PHILLIPS FLD	0015	06	HARFORD	39 28	76 10W	57	07	07		CH
ASSATEAGUE	0335	01	WORCESTER	38 4	75 13W	10	VAR	VAR		H
BALTIMORE WASH INTL AP R	0465	04	ANNE ARUNDEL	39 10	76 41W	156	24	24		HJ
BELTSVILLE	0700	04	PRINCE GEORGE'S	39 2	76 56W	145	08	08	08	CH
BRIGHTON DAM	1125	06	MONTGOMERY	39 11	77 0W	330	08	08		H
CONOWINGO DAM	2060	06	HARFORD	39 39	76 11W	40	07	07		H
CUMBERLAND 2	2282	07	ALLEGANY	39 39	78 45W	730	18	18		H
CYLBURN	2308	06	BALTIMORE	39 21	76 39W	235	08	08		H
DALECARLIA RSVR	2325	04	DISTRICT OF COLUMBIA	38 56	77 7W	150	08	08		H
DAMASCUS 3 SSW	2336	06	MONTGOMERY	39 16	77 14W	700	22	22		H
EMMITSBURG 2 SE	2906	06	FREDERICK	39 41	77 17W	403	07	07		H
FREDERICK 2 NNE	3353	06	FREDERICK	39 26	77 24W	280	07	07		H
FROSTBURG 2	3415	07	ALLEGANY	39 40	78 56W	2170	07	07		H
LAUREL 3 W	5111	04	PRINCE GEORGE'S	39 5	76 54W	400	24	24		H
MARYLAND SCIENCE CENTER R	5718	04	BALTIMORE (CITY)	39 17	76 37W	20	24	24		H
MECHANICSVILLE 5 NE	5865	03	ST. MARY'S	38 28	76 42W	100	07	07		H
MILLERS 4 NE	5934	06	CARROLL	39 43	76 48W	860	18	18		CH
NATL ARBORETUM DC	6350	04	DISTRICT OF COLUMBIA	38 55	76 58W	50	07	07		H
OAKLAND 1 SE	6620	08	GARRETT	39 25	79 24W	2420	07	07		H
OXON HILL	6800	04	PRINCE GEORGE'S	38 47	76 60W	120	08	08		H
PRINCESS ANNE	7330	01	SOMERSET	38 13	75 41W	20	17	17		H
ROYAL OAK 2 SSW	7806	02	TALBOT	38 43	76 11W	10	17	17		H
SALISBURY 2N	8004	01	WICOMICO	38 24	75 36W	20	17	17		H
SALISBURY FAA AP	8005	01	WICOMICO	38 20	75 31W	48	24	24		H
SAVAGE RIVER DAM	8065	08	GARRETT	39 31	79 8W	1495	08	08	08	CH
SHARPSBURG 5 S	8207	07	WASHINGTON	39 24	77 43W	500	07	07		H
SINES DEEP CREEK	8315	08	GARRETT	39 31	79 25W	2040	07	07		H
SMITHSBURG 2NW	8371	06	WASHINGTON	39 40	77 35W	670	08	08		H
SNOW HILL 4 N	8380	01	WORCESTER	38 14	75 23W	30	17	17		H
SOLOMONS	8405	03	CALVERT	38 19	76 27W	12	08	08		H
UPPER MARLBORO 3 NNW	9070	04	PRINCE GEORGE'S	38 51	76 46W	130	08	08	08	H
WILLIAMSPORT	9570	07	WASHINGTON	39 37	77 51W	360		06		H
DELAWARE										
DOVER	2730	02	KENT	39 9	75 30W	30	16	16		H
FRANKFORD	3500	02	SUSSEX	38 32	75 14W	41		07		H
WILMINGTON NEW CASTLE CO AP R	9595	01	NEW CASTLE	39 40	75 36W	79	24	24		HJ
WILMINGTON PORTER RSCH	9605	01	NEW CASTLE	39 46	75 32W	270	24	24		H

# REFERENCE NOTES

**STATION NAMES:** Name of the city, town or locality. Figures and letters following the station names indicate the distance in miles and direction from the post office or town community center.

**DIVISIONS:** Areas within a state of similar climatological characteristics. Division averages are calculated using data from stations that record temperature and/or precipitation. Station Precipitation totals flagged with an 'F' or 'M' are excluded from the Divisional Average calculations of precipitation. Stations with monthly Temperature averages flagged with an 'F' or 'M' are included in the Divisional Average if there are no more than 9 flagged or missing daily values in the month, else they are excluded from the divisional average for temperature.

**NORMALS:** The average value of the meteorological element over a time period. Effective 1 January 2012, the averaging period is 1981 to 2010. The normals for National Weather Service localities have been adjusted so as to be representative for the current observation site.

**MONTHLY DEGREE DAY TOTALS:** One heating (cooling) degree day is accumulated for each whole degree that the daily mean temperature is below (above) 65 degrees Fahrenheit.

**PRECIPITATION:** Values shown in hundredths of inches are water equivalent totals, i.e., total of liquid and melted frozen precipitation. In the "Monthly Summarized Data" table the total snow and sleet values shown in tenths of inches are unmelted amounts. The max depth on ground values of snow and sleet shown in whole inches are cumulative unmelted amounts. The number of days with .10, .50, 1.00 or more refers to water equivalents.

**PRECIPITATION QUALITY CONTROL:** The NCEI quality control process may flag precipitation data that are spatially inconsistent, exceed climatological limits, or are inconsistent with prevailing weather patterns.

**TEMPERATURE:** Original temperature values are given in the "Daily Temperature" table. Summary temperature information (averages, departures, extremes, monthly degree day totals) is based on the values labeled MAX/MIN.

**WIND:** (As shown in the "Evaporation and Wind" table) the total wind movement in miles over the evaporation pan as determined by an anemometer recorder located 6-8 inches above the pan.

## SYMBOLS AND LETTERS USED IN THE STATION INDEX TABLE

C Station is equipped with recording rain gage (R) but values in this bulletin are from a non-recording rain gage unless indicated by an R.

G Observations appear in the "Soil Temperatures" table.

H Observations appear in the "Snowfall and Snow on the Ground" table.

J Station also published as a Local Climatological Data publication.

VAR Observation time varies.

SR / SS Observation time near sunrise / Observation time near sunset, respectively.

## SYMBOLS AND LETTERS USED IN THE DATA TABLES

(DAILY DATA ARE FOR THE 24 HOURS IMMEDIATELY PRECEDING OBSERVATION TIME.)

BLANK Entries in the "Monthly Summarized Data" table indicate no record.

BLANK Entries in the "Daily Precipitation" and "Snowfall and Snow on the Ground" tables indicate zero.

BLANK Entries in the "Daily Temperature" table indicate a missing record

- No record. Data not recorded or not received in time for publication.

+ Precipitation or temperature extremes occurred on one or more previous dates during the month.

\* Rain gage not read. Precipitation is included in the amount following the asterisks.

Time distribution may not be known. A \* preceding the monthly total indicates precipitation amount is being carried forward to next month's total, and may include amounts from the previous month(s).

a As a subscript, indicates accumulated total.

A Amount of precipitation is the total of observer's entries for the current month. It may include precipitation that occurred during the previous month. Refer to earlier bulletin to determine date of last reading. (Hawaii stations)

B Divisional Departure from normals are computed using 1981-2010 normals.

E Normalized HDD/CDD Calculation. E is appended to the HDD/CDD Calculation when 1-9 individual daily  $\frac{1}{MAX}$

and/or TMIN values are missing and a Normalized HDD/CDD Calculation is provided. M appears alone if 10 or more daily values are missing.

F Monthly calculation flagged value. F is appended to average and/or total values computed which exclude one or more daily data values that have been flagged by the GHCN-Daily Dataset

M Insufficient or partial data. M is appended to average and/or total values computed with 1-9 daily values missing. M appears alone if 10 or more daily values are missing, (8 or more for wind and evaporation).

N Indicates snow fall or Snowdepth totals are computed with one or more missing days.

R Amounts from recording rain gage.

T Trace. An amount too small to measure.

**SEASONAL TABLES:** Monthly and seasonal snowfall and heating degree days for the 12 months ending with the June data are published in the July issue of this bulletin. Cooling degree days for the calendar year are published in the "Climatological Data Annual Summary."

Information concerning the history of changes in locations, exposure, etc. of substations is kept on file at the National Centers for Environmental Information. Historical information of regular National Weather Service Offices may be obtained from the "Local Climatological Data" annual publication. The contents of this publication may be reprinted or otherwise used freely, with proper credit to the National Centers For Environmental Information. The data are also available digitally.

Effective with the January 2011 Data-Month, COOP Observer Names are no longer included in the Monthly and Annual Climatological Data Publications. This information is not published to ensure the privacy of personal information pursuant to Section 208 of the E-Government Act of 2002 (44 USC 3601).

As of the 2011 Data-Year, Station and Climate Division Maps are no longer being included in the CD Publications. NCEI's Products Branch provides updated Station Maps for various data networks via the Historical Observing Metadata Repository: <http://www.ncdc.noaa.gov/homr>.

The GHCN-Daily Quality Control Flags shown below are displayed as superscripts with the data. For more Information on Global Historical Climatology Network - Daily and flags, see: <http://www.ncdc.noaa.gov/oa/climate/ghcn-daily/> and Comprehensive Automated Quality Assurance of Daily Surface Observations. Durre, Imke, Matthew J. Menne, Byron E. Gleason, Tamara G. Houston, Russell S. Vose, 2010: J. Appl. Meteor. Climatol., 49, 16151633. doi: 10.1175/2010JAMC2375.1

Blank = Passed All checks

D = failed duplicate check

G = failed gap check

I = failed internal consistency check

K = failed streak/frequent-value check

L = failed check on length of multiday period

M = failed megaconsistency check

N = failed naught check

O = failed climatological outlier check

R = failed lagged range check

S = failed spatial consistency check

T = failed temporal consistency check

W = temperature too warm for snow

X = failed bounds check

Z = flagged as a result of an official Datzilla investigation

Beginning with the January 2013 CD Publication, monthly mean temperature calculations have changed to the National Data Stewardship Team standard. Monthly maximum and minimum temperatures are not rounded until after the monthly mean temperature is calculated. This is the most accurate outcome, but may be slightly different from the mean derived from rounded monthly maximum and minimum.

Processing Updates and Errata: The CD Publications are periodically reproduced to include the addition of late reports and reported corrections. The GHCND data version noted on the cover of the publication provides the generation date.

The climate division temperature and precipitation values in this publication are based on simple averages from the current set of NWS-Designated Open and Published COOP and First Order Sites within each division. These values differ from those found in NCEI's nClimDiv product. Beginning in February 2014, the nClimDiv product is used by NCEI's Monitoring Branch and in its monthly climate reports. For more details on nClimDiv, please go to <http://www.ncdc.noaa.gov/monitoring-references/maps/us-climate-divisions.php>.

NOAA National Centers for Environmental Information  
Attn: Customer Engagement Branch  
151 Patton Avenue  
Asheville, NC 28801-5001

Customer Services Number: (828) 271-4800, option 2  
TDD : (828) 271-4010  
Fax number: (828) 271-4876

NCEI now offers free online access to the *Climatological Data* publication.  
Go to : [www.ncdc.noaa.gov](http://www.ncdc.noaa.gov) and choose Most Popular.