



CLIMATOLOGICAL DATA

MARYLAND AND DELAWARE

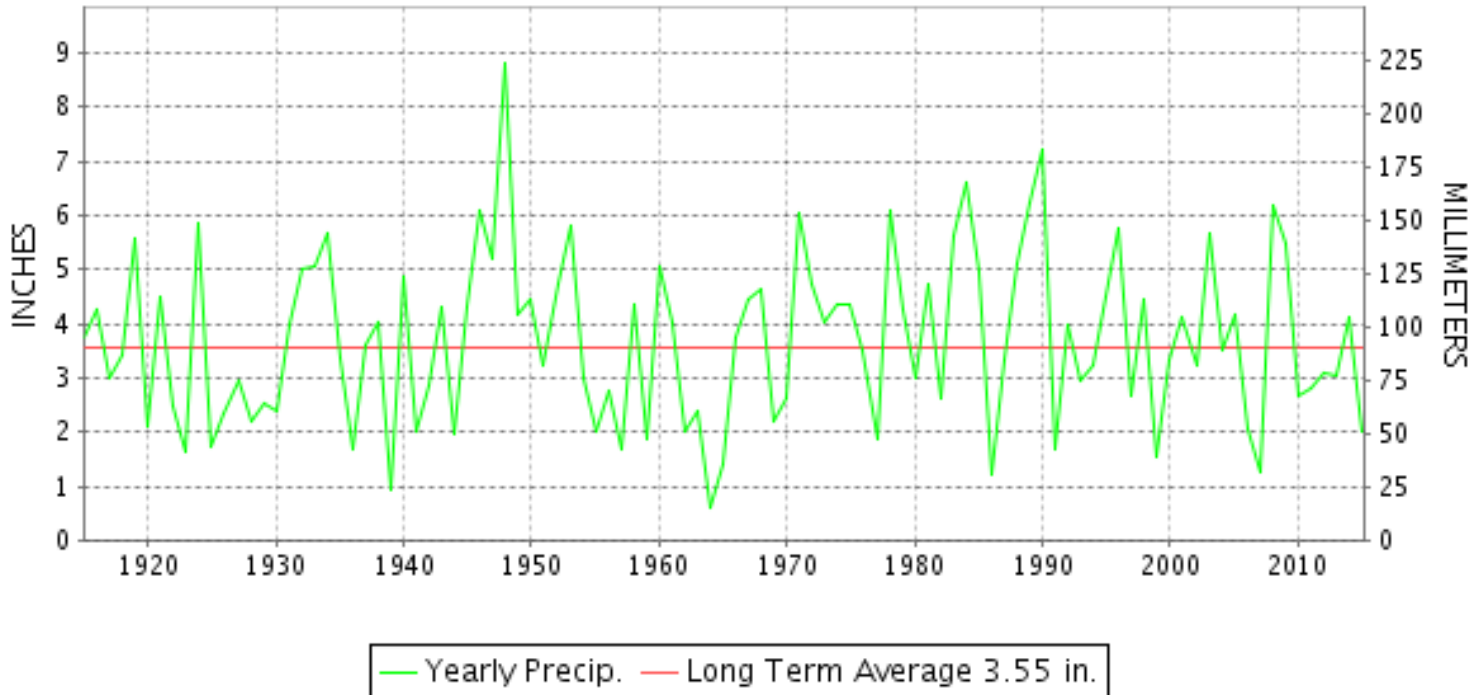
MAY 2015

VOLUME 119 NUMBER 05

ISSN 0145-0549

GHCND Ver: 3.21-upd-2015083005

MAY PRECIPITATION BY YEAR



TEMPERATURE AND PRECIPITATION EXTREMES

MARYLAND

HIGHEST TEMPERATURE	92	MAY 29+	2 STATIONS
LOWEST TEMPERATURE	32	MAY 23+	2 STATIONS
GREATEST TOTAL PRECIPITATION	5.58		BRIGHTON DAM
LEAST TOTAL PRECIPITATION	1.47		BELTSVILLE
GREATEST 1 DAY PRECIPITATION	2.42	MAY 18	MARYLAND SCIENCE CENTER

"I certify that this is an official publication of the National Oceanic and Atmospheric Administration (NOAA) It is compiled using information from weather observing sites supervised by NOAA/National Weather Service and received at the National Centers for Environmental Information(NCEI), Asheville, North Carolina 28801."

Director
National Centers for Environmental Information

noaa

National
Oceanic and
Atmospheric Administration

National
Environmental Satellite, Data
and Information Service

National
Centers for Environmental Information
Asheville, North Carolina

DELAWARE

HIGHEST TEMPERATURE	92	MAY 31	WILMINGTON PORTER RSCH
LOWEST TEMPERATURE	41	MAY 02	DOVER
GREATEST TOTAL PRECIPITATION	2.39		WILMINGTON NEW CASTLE CO AP
LEAST TOTAL PRECIPITATION	0.84		WILMINGTON PORTER RSCH
GREATEST 1 DAY PRECIPITATION	0.91	MAY 18	WILMINGTON NEW CASTLE CO AP

MONTHLY STATION AND DIVISION SUMMARY

STATION	TEMPERATURE (°F)											PRECIPITATION (IN)												
	AVERAGE MAXIMUM	AVERAGE MINIMUM	AVERAGE	DEPARTURE FROM NORMAL	HIGHEST	DATE	LOWEST	DATE	HEATING DEG. DAYS	COOLING DEG. DAYS	NO. OF DAYS				TOTAL	DEPARTURE FROM NORMAL	GREATEST 24 HOURS	DATE	ICE PELLETS, SNOW			NO. OF DAYS		
											MAX		MIN						TOTAL	MAX DEPTH ON GROUND	DATE	.10 OR MORE	.50 OR MORE	1.00 OR MORE
											>=90	<=32	<=32	<=0										
APPALACHIAN MOUNTAIN 07																								
CUMBERLAND 2	79.9	53.8	66.9	3.1	92	12	38	23	81	145	2	0	0	0	2.41	-1.61	1.45	12	0.0			4	1	1
FROSTBURG 2	73.5	50.8	62.1	5.5	84	26	36	24+	149	65	0	0	0	0	3.18	-1.70	0.92	01	0.0			8	3	0
SHARPSBURG 5 S	79.0	53.1	66.1	5.0	87	31+	37	24+	95	137	0	0	0	0	2.41	-1.75	0.81	17	0.0			5	2	0
WILLIAMSPORT	M	M	M		69	01	48	01	186E	0	0	0	0	MA 2.21	-1.94	0.94	19	M 0.0	0			6	2	0
--DIVISIONAL DATA----->																								
ALLEGHENY PLATEAU 08																								
OAKLAND 1 SE	72.9	47.4	60.2	4.1	86	12	32	23	176	37	0	0	1	0	2.78	-2.36	0.57	19	0.0	0		9	2	0
SAVAGE RIVER DAM	74.5M	50.5M	62.5M	4.8	84	26	35	23	129E	61E	0	0	0	0	M 3.50	-1.02	1.15	01	0.0			8	2	1
SINES DEEP CREEK	M	MMF	MMF		83	11	32	25	209E	15E	0	0	1	0	MA 2.17		0.70	28	0.0			5	1	0
--DIVISIONAL DATA----->																								
DELAWARE NORTHERN 01																								
WILMINGTON NEW CASTLE CO AP	78.5	57.7	68.1	5.3	89	31	44	02	56	164	0	0	0	0	2.39	-1.56	0.91	18	0.0	0		5	2	0
WILMINGTON PORTER RSCH	79.3	55.6	67.5	5.1	92	31	44	02	58	140	1	0	0	0	0.84	-3.54	0.40	16	0.0	0		3	0	0
--DIVISIONAL DATA----->																								
SOUTHERN 02																								
DOVER	80.3	58.3	69.3	5.1	88	31+	41	02	46	187	0	0	0	0	1.63	-2.62	0.58	01	0.0	0		4	1	0
--DIVISIONAL DATA----->																								

DAILY PRECIPITATION (INCHES)

STATION	TOTAL	DAY OF MONTH																																					
		01	02	03	04	05	06	07	08	09	10	11	12	13	14	15	16	17	18	19	20	21	22	23	24	25	26	27	28	29	30	31							
MARYLAND																																							
SOUTHERN																																							
EASTERN SHORE 01																																							
ASSATEAGUE	M	-	-	-	-	-	-	-	-	-	-	-	-	-	-	-	-	-	-	-	-	-	-	-	-	-	-	-	-	-	-	-	-	-	-	-	-		
PRINCESS ANNE	M 1.96											0.20				0.36		0.78	0.42	0.20																			
SALISBURY 2N	2.04	0.16	0.01									0.08	0.04				0.25	0.21	0.33			0.63	0.33																
SALISBURY FAA AP	1.75	0.13										0.11				0.15	0.03	0.19	0.30			0.84																	
SNOW HILL 4 N	1.57	0.22									0.05	0.04	0.05				0.03		0.10			0.63	0.45																
CENTRAL																																							
EASTERN SHORE 02																																							
ROYAL OAK 2 SSW	3.02					0.10					T	T					0.87		0.75			0.65					0.65												
LOWER SOUTHERN 03																																							
MECHANICSVILLE 5 NE	3.06	0.05				0.25	0.02					0.02					0.77	T	1.09			0.10	0.67											0.09					
SOLOMONS	1.91	T			0.14				T	T	0.02					0.64	T	0.45		T	0.50							0.16											
UPPER SOUTHERN 04																																							
BALTIMORE WASH INTL AP	2.10	T			0.01				0.01	T	T	T				0.17	T	1.54	0.15			0.20							T								0.02		
BELTSVILLE	1.47					0.30	0.02					T					0.17		0.67																0.02				
DALECARLIA RSVR	M 2.80	0.36				0.02	0.05										0.57		1.55				0.25																
LAUREL 3 W	3.00				0.42												0.12		1.96	0.15			0.24													0.11			
MARYLAND SCIENCE CENTER	3.13															0.26	0.12	2.42	0.23			0.10																	
NATL ARBORETUM DC	M 2.12	0.36				0.04	T	-				T				0.33	T	1.07																		T			
OXON HILL	2.23	0.02				0.14			T	T	T					0.50		1.16				T	0.34													0.07			
UPPER MARLBORO 3 NNW	2.60	0.03				0.62	T				T	0.01				0.48		1.07																			0.01		
NORTHERN CENTRAL 06																																							
ABERDEEN PHILLIPS FLD	A 1.77	0.09				0.01					0.01	0.01	0.13				*	0.32 _a	0.92			T	0.16												0.07	0.05			
BRIGHTON DAM	5.58	0.07	0.05					0.03			T		0.06				1.65		1.58	1.90	0.01	0.10														0.13			
CONOWINGO DAM	3.39											0.20				0.65		0.53																		0.54		1.47	
CYLBURN	2.66	T									T						0.67		1.85																				
DAMASCUS 3 SSW	2.62				0.16	0.87	0.01			T						0.15	T	0.04	1.15			0.09													0.04	0.11		T	
EMMITSBURG 2 SE	2.17	0.20					0.01										T	0.61	0.09	0.80			T	0.03													0.43		
FREDERICK 2 NNE	M	-	-	-	-	-	-	-	-	-	-	-	-	-	-	-	-	-	-	-	-	-	-	-	-	-	-	-	-	-	-	-	-	-	-	-	-		
MILLERS 4 NE	2.41	0.05				T											0.01	0.10	T	2.21		0.02														0.02			
SMITHSBURG 2NW	MA 2.46	0.20			*	*	*	0.15 _a									-	-		0.43		0.08	0.10												1.30		0.20		
APPALACHIAN																																							
MOUNTAIN 07																																							
CUMBERLAND 2	2.41	0.14											1.45					0.07	0.05	0.06			T	0.07											0.02	0.34		0.03	0.12
FROSTBURG 2	3.18	0.92											0.18			0.05	0.12	T	0.15			0.05	0.15											0.04	0.70	0.63	0.11		
SHARPSBURG 5 S	2.41	0.53	T									0.10					0.81	0.01	0.48			0.07	0.01													0.04		T	
WILLIAMSPORT	MA 2.21	0.16	-	-	-	-	-	-	-	-		0.10					0.53		0.94	*		0.01 _a	0.07													0.14		0.26	
ALLEGHENY PLATEAU 08																																							
OAKLAND 1 SE	2.78	0.16				0.06							0.24				0.17	0.09	0.57			0.04	0.14	0.10			0.01									0.50	0.42	0.28	
SAVAGE RIVER DAM	M 3.50	1.15											0.26			-		0.20	T	0.12		T	0.07												0.17	0.45	0.28	0.80	

DAILY PRECIPITATION (INCHES)

STATION	TOTAL	DAY OF MONTH																														
		01	02	03	04	05	06	07	08	09	10	11	12	13	14	15	16	17	18	19	20	21	22	23	24	25	26	27	28	29	30	31
SINES DEEP CREEK	MA 2.17	0.25	*	*	0.00 _a		-		*	*	0.00 _a	0.27				*	*	0.29 _a	0.30			0.30	*	*	0.06 _a			0.70	-	-	-	
DELAWARE NORTHERN 01																																
WILMINGTON NEW CASTLE CO AP	2.39				0.01	0.02			T	0.43	0.01				T	0.06	T	0.91	0.25			0.15						0.55				
WILMINGTON PORTER RSCH	0.84					0.08			T		T					0.40		0.03	0.15			0.18				T						
SOUTHERN 02																																
DOVER	1.63	0.58				0.05					0.37						0.07		0.06			0.34	0.15						0.01			

DAILY TEMPERATURES (°F)

STATION	OB. TIME	MAX/MIN	DAY OF MONTH																															AVERAGE			
			01	02	03	04	05	06	07	08	09	10	11	12	13	14	15	16	17	18	19	20	21	22	23	24	25	26	27	28	29	30	31				
MARYLAND SOUTHERN EASTERN SHORE 01 ASSATEAGUE	VA	MAX MIN																																			M M M
PRINCESS ANNE	17	MAX MIN	53 42			83 48	82 63	83 53	80 52	81 55		75 65	88 64	83 64	74 43	74 42				88 66	84 67	80 49	72 47	73 49				81 57	84 60	84 67	86 65	84 64			M M M		
SALISBURY 2N	17	MAX MIN	67 51	72 41	80 48	82 53	82 61	81 54	79 56	82 65	83 66	84 66	87 66	71 49	76 47		83 60	83 67		88 67	83 63			72 48	77 49		82 51	84 49	86 49	85 70	86 65	85 65	87 68	81.0 57.3			
SALISBURY FAA AP	24	MAX MIN	53 42	71 41	80 41	83 48	82 62	82 53	77 52	81 55	82 64	83 65	75 65	88 53	74 44	70 43	83 56	84 67	88 66	84 66	84 49	72 47	73 49	71 48	78 44	81 57	84 60	86 68	84 66	86 62	84 62	85 62	87 66	78.6 55.6			
SNOW HILL 4 N	17	MAX MIN	70 46	70 39	81 43	83 42	83 61	84 61	78 56	80 56	82 64	84 63	73 65	89 66	87 69	71 47	74 42	86 58	89 68	90 67	87 64	86 46	75 49	74 49	74 49	78 43	85 58	87 63	85 67	86 68	87 67	85 65	90 67	81.7 57.5			
CENTRAL EASTERN SHORE 02 ROYAL OAK 2 SSW	17	MAX MIN	63 38	72 40	80 50	83 50	86 63	80 57	79 55	83 55	82 65	84 64	81 50	88 48	78 63	69 48	75 63	85 67	84 67	89 67	85 60	74 48	60 56	74 54	70 52	79 52	85 67	85 71	85 70	86 65	85 70	85 70	88 72	80.1 59.6			
LOWER SOUTHERN 03 MECHANICSVILLE 5 NE	07	MAX MIN	72 52	56 39	71 42	80 50	83 51	84 59	78 56	77 56	79 56	77 59	80 63	76 65	67 45	66 45	74 49	84 64	81 67	86 67	83 59	70 47	54 47	71 47	78 48	79 48	81 62	84 63	86 67	84 67	86 66	84 67	82 67	84 67	77.2 56.0		
SOLOMONS	08	MAX MIN	56 46	69 51	74 56	81 64	78 62	72 58	76 60	77 63	77 66	75 68	89 63	67 54	69 56	71 59	83 67	85 68	84 61	83 59	84 52	71 55	60 57	74 57	81 65	81 67	83 71	87 67	82 71	82 70	83 71	86 73	87 62.5				
UPPER SOUTHERN 04 BALTIMORE WASH INTL AP	24	MAX MIN	57 48	75 43	81 46	84 50	85 61	80 60	80 57	83 56	81 58	84 63	82 64	89 63	69 54	72 47	76 53	88 56	87 67	88 66	86 68	72 58	58 49	75 47	72 46	82 47	84 58	87 62	88 69	91 65	84 70	88 69	88 69	90 70	80.6 57.6		
BELTSVILLE	08	MAX MIN	73 52	61 46	75 45	81 48	84 57	86 57	80 56	82 58	81 63	83 68	80 63	87 60	65 48	70 55	76 66	88 66	84 68	88 68	87 59	69 53	58 45	74 47	73 57	82 57	83 62	87 72	87 61	89 67	84 69	87 69	87 70	79.5 57.8			
DALECARLIA RSVR	08	MAX MIN	72 51	62 50	74 47	81 51	83 58	86 59	82 58	81 62	84 61	83 63	82 66	89 60	64 54	71 54	84 61	88 65	84 67	84 68	90 58	86 70	70 57	57 47	75 47	74 50	83 59	84 66	88 69	89 68	87 69	86 61	88 71	80.1 59.2			
LAUREL 3 W	24	MAX MIN	74 50	79 52	82 47	88 56	87 62	82 61	80 57	82 58	81 60	82 66	82 69	88 66	71 44	77 44	88 57	85 67	89 71	87 67	87 56	76 48	70 48	75 48	73 48	81 50	83 62	87 65	75 70	90 69	84 69	88 69	90 70	81.9 59.2			
MARYLAND SCIENCE CENTER	24	MAX MIN	60 52	74 49	83 56	86 58	85 66	81 65	79 65	81 64	80 65	83 69	81 71	88 58	71 52	71 57	84 74	86 86	87 87	86 86	75 61	76 70	70 79	79 85	79 88	85 88	86 86	86 90	88 83	86 71	90 71	88 71	90 71	80.4 62.5			
NATL ARBORETUM DC	07	MAX MIN	75 53	64 48	77 51	83 55	86 61	86 62	83 58	83 59	85 66	84 69	84 69	82 61	89 50	68 55	72 44	78 57	89 67	85 71	91 67	84 56	72 48	60 48	76 48	60 48	83 50	85 62	89 65	88 70	92 69	87 69	90 69	81.4 61.0			
OXON HILL	08	MAX MIN	74 52	61 46	76 47	81 53	86 53	86 61	81 57	82 58	82 61	84 63	84 67	79 66	88 61	67 50	71 50	78 53	88 68	85 69	90 59	88 57	75 50	59 53	76 52	74 52	83 58	84 64	87 68	89 69	89 69	84 67	88 69	80.6 59.2			
UPPER MARLBORO 3 NNW	08	MAX MIN	73 51	59 42	74 48	82 49	84 60	86 58	79 56	80 55	80 59	82 64	82 67	79 63	87 61	67 45	71 49	89 56	85 66	87 67	87 59	71 52	57 47	76 48	74 47	82 58	83 63	88 69	89 68	90 67	85 68	88 69	88 70	79.7 58.0			
NORTHERN CENTRAL 06 ABERDEEN PHILLIPS FLD	07	MAX MIN	73 51	57 41	72 43	79 50	84 53	85 60	78 61	80 55	82 59	79 62	82 66	81 63	87 57	69 49	74 51	84 59	79 65	86 64	85 58	67 45	58 46	73 47	69 47	78 51	83 61	84 68	87 70	87 68	87 68	83 70	86 68	78.1 57.0			

DAILY TEMPERATURES (°F)

STATION	OB. TIME	MAX/MIN	DAY OF MONTH																															AVERAGE
			01	02	03	04	05	06	07	08	09	10	11	12	13	14	15	16	17	18	19	20	21	22	23	24	25	26	27	28	29	30	31	
BRIGHTON DAM	08	MAX	71	71	75	80	83	83	78	79	81	79	81	79	85	62	68	74	85	82	86	84	68	55	74	70	81	82	85	85	86	82	85	78.0
		MIN	50	47	48	47	51	56	55	55	55	62	66	61	58	45	48	51	64	64	66	55	51	45	43	45	45	57	59	62	66	64	67	55.1
CONOWINGO DAM	07	MAX	57	73	76	82	80	70	78	79	76	82	77	85	66	70	73	82	78	81	79	65	54	73	67	78	78	83	82	81	80	84	86	76.0
		MIN	40	41	49	51	57	60	55	55	59	66	62	55	47	49	52	64	66	63	57	52	49	48	46	48	62	62	67	62	63	68	68	56.2
CYLBURN	08	MAX	72	59	74	80	83	81	78	76	79	77	79	79	84	64	68	72	83	80	83	81	65	53	71	68	77	82	83	83	84	79	85	76.2
		MIN	52	44	47	51	62	61	56	58	60	63	68	65	57	47	47	55	62	66	66	56	51	47	49	48	62	62	65	68	63	68	68	57.9
DAMASCUS 3 SSW	22	MAX	61	71	78	84	81	79	79	81	79	82	80	84	78	68	75	84	80	87	83	71	55	72	70	80	82	84	82	85	83	85	87	78.4
		MIN	49	49	50	53	59	59	53	57	57	62	66	63	50	43	51	59	64	65	56	53	48	46	41	51	60	62	66	64	66	65	67	56.6
EMMITSBURG 2 SE	07	MAX	70	63	73	79	83	80	80	79	83	78	83	84	84	65	68	75	85	80	88	85	69	56	73	71	79	83	83	83	86	83	85	77.9
		MIN	43	50	50	48	49	56	57	56	56	57	59	65	56	43	43	49	55	64	64	53	51	50	42	42	44	55	61	64	63	64	66	54.0
FREDERICK 2 NNE	07	MAX																																M
		MIN																																M
MILLERS 4 NE	18	MAX	65	74	78	82	81	80	79	83	81	82	82	83	81	68	75	85	80	86	82	82	62	71	68	79	81	84	82	83	83	84	87	79.1
		MIN	46	47	51	54	58	59	56	55	56	61	66	63	53	42	48	55	64	64	65	51	48	46	42	46	57	60	66	63	62	65	66	56.0
SMITHSBURG 2NW	08	MAX	73	66	72				80	79	83	79	83	86	82	82	68		80	86	83	64	54	70	71	81	83	83	83	84	84	84	77.8	
		MIN	40	47	41			54	56	55	61	61	65	53	36	39			65	65	50	48	42	35	42	46	60	66	63	66	66	66	67	53.4
APPALACHIAN MOUNTAIN 07																																		
CUMBERLAND 2	18	MAX	64	68	76	81	84	84	85	79	88	89	90	92	81	57	72	77	83	84	87	86	65	56	74	76	84	88	84	88	86	85	84	79.9
		MIN	52	50	44	45	47	57	57	58	58	59	59	62	54	41	42	50	59	64	64	52	50	38	40	44	55	63	62	63	64	65	65	53.8
FROSTBURG 2	07	MAX	53	64	68	75	80	79	81	74	83	83	83	83	75	52	64	69	79	76	81	77	59	50	64	71	76	84	78	78	80	80	73.5	
		MIN	44	47	46	46	52	55	52	55	53	53	58	59	45	37	38	49	61	61	61	46	44	40	36	36	44	60	60	60	58	58	60	50.8
SHARPSBURG 5 S	07	MAX	71	66	74	79	85	83	84	81	83	79	85	85	85	61	69	77	86	82	86	86	67	55	73	72	83	85	86	83	87	85	87	79.0
		MIN	44	48	42	44	48	55	55	56	57	61	62	62	56	38	39	56	61	65	66	52	48	41	37	37	46	56	59	63	63	65	65	53.1
WILLIAMSPORT																																		M
		MIN	48																															M
ALLEGHENY PLATEAU 08																																		
OAKLAND 1 SE	07	MAX	52	65	67	71	77	77	81	77	81	81	81	86	73	52	64	77	76	76	81	75	60	55	65	69	77	81	77	74	80	76	77	72.9
		MIN	44	33	37	37	44	44	49	50	50	50	50	62	43	35	38	48	60	57	59	44	45	38	32	36	46	52	54	65	53	59	56	47.4
SAVAGE RIVER DAM	08	MAX	51	66	70	72	78	78	82	74	82	83	82	83	76	55		78	79	77	82	79	62	53	67	73	77	84	78	77	82	78	78	74.5
		MIN	49	42	42	43	43	53	54	54	53	54	57	60	49	39		49	58	61	62	50	46	42	35	36	42	51	58	58	57	58	60	50.5
SINES DEEP CREEK	07	MAX	52			74	77	78					83	82	76	56	65			76	77	75	60	67			78	81	79	77			M	
		MIN	44			34	38	47			48		49	55	46	35	35				35 ^s	57	44	42	37			32	46	52	54			M
DELAWARE NORTHERN 01																																		
WILMINGTON NEW CASTLE CO AP	24	MAX	62	71	81	84	83	76	76	78	79	81	81	85	70	72	73	84	83	86	81	68	56	75	71	79	84	86	87	87	83	84	89	78.5
		MIN	47	44	50	51	60	61	58	57	60	63	66	64	52	47	51	59	68	62	61	51	50	48	48	46	62	63	70	69	66	67	68	57.7
WILMINGTON PORTER RSCH	24	MAX	60	72	77	83	82	73	78	80	80	82	82	86	72	69	74	85	85	88	81	71	55	74	68	81	86	88	89	89	89	88	92	79.3
		MIN	48	44	48	52	61	60	58	54	54	54	66	56	48	50	47	47	47	59	59	54	48	49	49	49	62	63	69	69	65	66	68	55.6
DELAWARE SOUTHERN 02																																		
DOVER	16	MAX	57	74	79	83	85	84	77	79	78	81	78	87	85	72	74	86	84	86	84	82	66	73	73	80	84	86	88	88	81	88	88	80.3

MARYLAND AND DELAWARE
201505

DAILY TEMPERATURES (°F)

STATION	OB. TIME	MAX/MIN	DAY OF MONTH																															AVERAGE
			01	02	03	04	05	06	07	08	09	10	11	12	13	14	15	16	17	18	19	20	21	22	23	24	25	26	27	28	29	30	31	
		MIN	45	41	48	55	62	61	56	54	60	63	63	65	58	48	50	59	69	67	64	59	50	48	47	50	62	65	68	70	67	66	68	58.3

SNOWFALL AND SNOW ON GROUND (INCHES)

STATION		DAY OF MONTH																														
		01	02	03	04	05	06	07	08	09	10	11	12	13	14	15	16	17	18	19	20	21	22	23	24	25	26	27	28	29	30	31
MARYLAND SOUTHERN EASTERN SHORE 01 ASSATEAGUE PRINCESS ANNE SALISBURY 2N SALISBURY FAA AP SNOW HILL 4 N	SNOWFALL SNOWFALL SNOWFALL SNOWFALL SN ON GND SNOWFALL																															
DELAWARE NORTHERN 01 WILMINGTON NEW CASTLE CO AP WILMINGTON PORTER RSCH	SNOWFALL SN ON GND SNOWFALL SN ON GND																															

Snowfall: Includes snow and ice. Values for NWS stations (J index note) are Mid-Mid (LST).
 Snow on ground: Includes snow, sleet, ice, and hail. Values for NWS stations (J index note) are observed at 12 UTC (GMT).
 Water Equivalent: Given for NWS stations (J index note) only, when snow depth is 2 inches or more, and is measured at 18 UTC (GMT)

PAN EVAPORATION AND WIND

STATION		DAY OF MONTH																															TOTAL OR AVERAGE
		01	02	03	04	05	06	07	08	09	10	11	12	13	14	15	16	17	18	19	20	21	22	23	24	25	26	27	28	29	30	31	
MARYLAND UPPER SOUTHERN 04 BELTSVILLE	WIND	48	25	33	33	72	29	37	27	28	38	40	29	95	94	28	60	38	28	39	77	71	28	93	31	36	97	84	57	34	47	93	1569
	EVAP	0.17	0.10	0.20	0.20	0.32	0.21	0.18	0.19	0.18	0.15	0.13	0.15	0.34	0.25	0.19	0.22	0.18	0.18	0.16	0.33	0.25	0.03	0.28	0.24	0.22	0.29	0.27	0.19	0.21	0.18	0.28	6.47
	MAX	68	68	81	81	82	88	88	87	86	86	85	87	87	74	82	83	93	86	90	89	78	56	77	74	87	85	90	88	83	92	90	83.2
	MIN	53	48	48	52	54	60	60	60	63	64	69	68	55	46	47	54	60	68	59	58	57	47	44	60	72	62	64	68	70	69	66	58.9
UPPER MARLBORO 3 NNW	WIND	-	-	-	-	-	-	-	-	-	-	-	-	-	-	-	-	-	-	-	-	-	-	-	-	-	-	-	-	-	-	-	M
	EVAP	-	-	-	-	-	-	-	-	-	-	-	-	-	-	-	-	-	-	-	-	-	-	-	-	-	-	-	-	-	-	-	M
	MAX	-	-	-	-	-	-	-	-	-	-	-	-	-	-	-	-	-	-	-	-	-	-	-	-	-	-	-	-	-	-	-	M
	MIN	-	-	-	-	-	-	-	-	-	-	-	-	-	-	-	-	-	-	-	-	-	-	-	-	-	-	-	-	-	-	-	M
ALLEGHENY PLATEAU 08 SAVAGE RIVER DAM	WIND	-	-	-	-	-	-	-	-	-	-	-	-	-	-	-	-	-	-	-	-	-	-	-	-	-	-	-	-	-	-	-	M
	EVAP	-	-	-	-	-	-	-	-	-	-	-	-	-	-	-	-	-	-	-	-	-	-	-	-	-	-	-	-	-	-	-	M
	MAX	-	-	-	-	-	-	-	-	-	-	-	-	-	-	-	-	-	-	-	-	-	-	-	-	-	-	-	-	-	-	-	-
	MIN	-	-	-	-	-	-	-	-	-	-	-	-	-	-	-	-	-	-	-	-	-	-	-	-	-	-	-	-	-	-	-	M

Evaporation: Is measured in hundreths of inches.

Wind: Is measured in miles.

Max and Min: The maximum and minimum temperatures (Fahrenheit) of the water in the evaporation pan.

STATION INDEX

STATION	INDEX NO.	DIVISION	COUNTY	LATITUDE	LONGITUDE	ELEVATION (IN FEET)	OBSERVATION TIME AND TABLES			
							LOCAL STD TIME			
							TEMP	PRECIP	EVAP	SPECIAL SEE (NOTES)
MARYLAND										
ABERDEEN PHILLIPS FLD	0015	06	HARFORD	39 28	76 10W	57	07	07		CH
ASSATEAGUE	0335	01	WORCESTER	38 4	75 13W	10	VAR	VAR		H
BALTIMORE WASH INTL AP R	0465	04	ANNE ARUNDEL	39 10	76 41W	156	24	24		HJ
BELTSVILLE	0700	04	PRINCE GEORGE'S	39 2	76 56W	145	08	08	08	CH
BRIGHTON DAM	1125	06	MONTGOMERY	39 11	77 0W	330	08	08		H
CONOWINGO DAM	2060	06	HARFORD	39 39	76 11W	40	07	07		H
CUMBERLAND 2	2282	07	ALLEGANY	39 39	78 45W	730	18	18		H
CYLBURN	2308	06	BALTIMORE	39 21	76 39W	235	08	08		H
DALECARLIA RSVR	2325	04	DISTRICT OF COLUMBIA	38 56	77 7W	150	08	08		H
DAMASCUS 3 SSW	2336	06	MONTGOMERY	39 16	77 14W	700	22	22		H
EMMITSBURG 2 SE	2906	06	FREDERICK	39 41	77 17W	403	07	07		H
FREDERICK 2 NNE	3353	06	FREDERICK	39 26	77 24W	280	07	07		H
FROSTBURG 2	3415	07	ALLEGANY	39 40	78 56W	2170	07	07		H
LAUREL 3 W	5111	04	PRINCE GEORGE'S	39 5	76 54W	400	24	24		H
MARYLAND SCIENCE CENTER R	5718	04	BALTIMORE (CITY)	39 17	76 37W	20	24	24		H
MECHANICSVILLE 5 NE	5865	03	ST. MARY'S	38 28	76 42W	100	07	07		H
MILLERS 4 NE	5934	06	CARROLL	39 43	76 48W	860	18	18		CH
NATL ARBORETUM DC	6350	04	DISTRICT OF COLUMBIA	38 55	76 58W	50	07	07		H
OAKLAND 1 SE	6620	08	GARRETT	39 25	79 24W	2420	07	07		H
OXON HILL	6800	04	PRINCE GEORGE'S	38 47	76 60W	120	08	08		H
PRINCESS ANNE	7330	01	SOMERSET	38 13	75 41W	20	17	17		H
ROYAL OAK 2 SSW	7806	02	TALBOT	38 43	76 11W	10	17	17		H
SALISBURY 2N	8004	01	WICOMICO	38 24	75 36W	20	17	17		H
SALISBURY FAA AP	8005	01	WICOMICO	38 20	75 31W	48	24	24		H
SAVAGE RIVER DAM	8065	08	GARRETT	39 31	79 8W	1495	08	08	08	CH
SHARPSBURG 5 S	8207	07	WASHINGTON	39 24	77 43W	500	07	07		H
SINES DEEP CREEK	8315	08	GARRETT	39 31	79 25W	2040	07	07		H
SMITHSBURG 2NW	8371	06	WASHINGTON	39 40	77 35W	670	08	08		H
SNOW HILL 4 N	8380	01	WORCESTER	38 14	75 23W	30	17	17		H
SOLOMONS	8405	03	CALVERT	38 19	76 27W	12	08	08		H
UPPER MARLBORO 3 NNW	9070	04	PRINCE GEORGE'S	38 51	76 46W	130	08	08	08	H
WILLIAMSPORT	9570	07	WASHINGTON	39 37	77 51W	360	06	06		H
DELAWARE										
DOVER	2730	02	KENT	39 9	75 30W	30	16	16		H
FRANKFORD	3500	02	SUSSEX	38 32	75 14W	41	07	07		H
WILMINGTON NEW CASTLE CO AP R	9595	01	NEW CASTLE	39 40	75 36W	79	24	24		HJ
WILMINGTON PORTER RSCH	9605	01	NEW CASTLE	39 46	75 32W	270	24	24		H

REFERENCE NOTES

STATION NAMES: Name of the city, town or locality. Figures and letters following the station names indicate the distance in miles and direction from the post office or town community center.

DIVISIONS: Areas within a state of similar climatological characteristics. Division averages are calculated using data from stations that record temperature and/or precipitation. Station Precipitation totals flagged with an 'F' or 'M' are excluded from the Divisional Average calculations of precipitation. Stations with monthly Temperature averages flagged with an 'F' or 'M' are included in the Divisional Average if there are no more than 9 flagged or missing daily values in the month, else they are excluded from the divisional average for temperature.

NORMALS: The average value of the meteorological element over a time period. Effective 1 January 2012, the averaging period is 1981 to 2010. The normals for National Weather Service localities have been adjusted so as to be representative for the current observation site.

MONTHLY DEGREE DAY TOTALS: One heating (cooling) degree day is accumulated for each whole degree that the daily mean temperature is below (above) 65 degrees Fahrenheit.

PRECIPITATION: Values shown in hundredths of inches are water equivalent totals, i.e., total of liquid and melted frozen precipitation. In the "Monthly Summarized Data" table the total snow and sleet values shown in tenths of inches are unmelted amounts. The max depth on ground values of snow and sleet shown in whole inches are cumulative unmelted amounts. The number of days with .10, .50, 1.00 or more refers to water equivalents.

PRECIPITATION QUALITY CONTROL: The NCEI quality control process may flag precipitation data that are spatially inconsistent, exceed climatological limits, or are inconsistent with prevailing weather patterns.

TEMPERATURE: Original temperature values are given in the "Daily Temperature" table. Summary temperature information (averages, departures, extremes, monthly degree day totals) is based on the values labeled MAX/MIN.

WIND: (As shown in the "Evaporation and Wind" table) the total wind movement in miles over the evaporation pan as determined by an anemometer recorder located 6-8 inches above the pan.

SYMBOLS AND LETTERS USED IN THE STATION INDEX TABLE

C Station is equipped with recording rain gage (R) but values in this bulletin are from a non-recording rain gage unless indicated by an R.

G Observations appear in the "Soil Temperatures" table.

H Observations appear in the "Snowfall and Snow on the Ground" table.

J Station also published as a Local Climatological Data publication.

VAR Observation time varies.

SR / SS Observation time near sunrise / Observation time near sunset, respectively.

SYMBOLS AND LETTERS USED IN THE DATA TABLES

(DAILY DATA ARE FOR THE 24 HOURS IMMEDIATELY PRECEDING OBSERVATION TIME.)

BLANK Entries in the "Monthly Summarized Data" table indicate no record.

BLANK Entries in the "Daily Precipitation" and "Snowfall and Snow on the Ground" tables indicate zero.

BLANK Entries in the "Daily Temperature" table indicate a missing record

- No record. Data not recorded or not received in time for publication.

+ Precipitation or temperature extremes occurred on one or more previous dates during the month.

* Rain gage not read. Precipitation is included in the amount following the asterisks.

Time distribution may not be known. A * preceding the monthly total indicates precipitation amount is being carried forward to next month's total, and may include amounts from the previous month(s).

a As a subscript, indicates accumulated total.

A Amount of precipitation is the total of observer's entries for the current month. It may include precipitation that occurred during the previous month. Refer to earlier bulletin to determine date of last reading. (Hawaii stations)

B Divisional Departure from normals are computed using 1981-2010 normals.

E Normalized HDD/CDD Calculation. E is appended to the HDD/CDD Calculation when 1-9 individual daily

and/or TMIN values are missing and a Normalized HDD/CDD Calculation is provided. M appears alone if 10 or more daily values are missing.

F Monthly calculation flagged value. F is appended to average and/or total values computed which exclude one or more daily data values that have been flagged by the GHCN-Daily Dataset

M Insufficient or partial data. M is appended to average and/or total values computed with 1-9 daily values missing. M appears alone if 10 or more daily values are missing, (8 or more for wind and evaporation).

N Indicates snow fall or Snowdepth totals are computed with one or more missing days.

R Amounts from recording rain gage.

T Trace. An amount too small to measure.

SEASONAL TABLES: Monthly and seasonal snowfall and heating degree days for the 12 months ending with the June data are published in the July issue of this bulletin. Cooling degree days for the calendar year are published in the "Climatological Data Annual Summary."

Information concerning the history of changes in locations, exposure, etc. of substations is kept on file at the National Centers for Environmental Information. Historical information of regular National Weather Service Offices may be obtained from the "Local Climatological Data" annual publication. The contents of this publication may be reprinted or otherwise used freely, with proper credit to the National Centers For Environmental Information. The data are also available digitally.

Effective with the January 2011 Data-Month, COOP Observer Names are no longer included in the Monthly and Annual Climatological Data Publications. This information is not published to ensure the privacy of personal information pursuant to Section 208 of the E-Government Act of 2002 (44 USC 3601).

As of the 2011 Data-Year, Station and Climate Division Maps are no longer being included in the CD Publications. NCEI's Products Branch provides updated Station Maps for various data networks via the Historical Observing Metadata Repository: <http://www.ncdc.noaa.gov/homr>.

The GHCN-Daily Quality Control Flags shown below are displayed as superscripts with the data. For more Information on Global Historical Climatology Network - Daily and flags, see: <http://www.ncdc.noaa.gov/oa/climate/ghcn-daily/> and Comprehensive Automated Quality Assurance of Daily Surface Observations. Durre, Imke, Matthew J. Menne, Byron E. Gleason, Tamara G. Houston, Russell S. Vose, 2010: J. Appl. Meteor. Climatol., 49, 16151633. doi: 10.1175/2010JAMC2375.1

Blank = Passed All checks	N = failed naught check
D = failed duplicate check	O = failed climatological outlier check
G = failed gap check	R = failed lagged range check
I = failed internal consistency check	S = failed spatial consistency check
K = failed streak/frequent-value check	T = failed temporal consistency check
L = failed check on length of multiday period	W = temperature too warm for snow
M = failed megaconsistency check	X = failed bounds check
	Z = flagged as a result of an official Datzilla investigation

Beginning with the January 2013 CD Publication, monthly mean temperature calculations have changed to the National Data Stewardship Team standard. Monthly maximum and minimum temperatures are not rounded until after the monthly mean temperature is calculated. This is the most accurate outcome, but may be slightly different from the mean derived from rounded monthly maximum and minimum.

Processing Updates and Errata: The CD Publications are periodically reproduced to include the addition of late reports and reported corrections. The GHCND data version noted on the cover of the publication provides the generation date.

The climate division temperature and precipitation values in this publication are based on simple averages from the current set of NWS-Designated Open and Published COOP and First Order Sites within each division. These values differ from those found in NCEI's nClimDiv product. Beginning in February 2014, the nClimDiv product is used by NCEI's Monitoring Branch and in its monthly climate reports. For more details on nClimDiv, please go to <http://www.ncdc.noaa.gov/monitoring-references/maps/us-climate-divisions.php>.

These and other publications are available from the National Centers for Environmental Information

Hourly Precipitation Data

This publication contains hourly precipitation amounts obtained from recording rain gages located at National Weather Service, Federal Aviation Administration, and cooperative observer stations. Published data are displayed in inches and tenths or inches and hundredths at local standard time. HPD includes maximum precipitation for nine (9) time periods from 15 minutes to 24 hours, for selected stations.

Climatological Data

Monthly editions contain station daily maximum and minimum temperatures and precipitation. Some Stations provide daily snowfall, snow depth, evaporation, and soil temperature data. Each edition also contains monthly summaries for heating and cooling degree days (65 degree F base). The July issue contains a recap of monthly heating degree days and snow data for the preceding July through June.

The Annual issue contains monthly and annual averages of temperature, precipitation, temperature extremes, freeze data, soil temperatures, evaporation, and a recap of monthly cooling degree days.

Storm Data

Monthly issues contain a chronological listing, by states, of occurrences of storms and unusual weather phenomena. Reports contain information on storm paths, deaths, injuries, and property damage. An "Outstanding storms of the month" section highlights severe weather events with photographs, illustrations, and narratives. The December issue includes annual tornado, lightning, flash flood, and tropical cyclone summaries.

Monthly Climatic Data for the World

This publication contains monthly means for temperature, pressure, precipitation, vapor pressure, and sunshine for approximately 2,000 surface data collection stations worldwide and monthly mean upper air temperatures, dew point depressions, and wind velocities for approximately 500 observing sites.

Local Climatological Data

LCD publications summarize temperature, relative humidity, precipitation, cloudiness, wind speed and direction observations for several hundred cities in the U.S. and its territories. Each monthly publication also contains 3 hourly weather observations for that month and a hourly summary of precipitation. Annual LCD publications contain a summary of the past calendar year as well as historical averages and extremes.

For Information Call:

(828) 271-4800 Option 2

(828) 271-4010 (TDD)

(828) 271-4876 (Fax)

NOAA National Centers for Environmental Information
Attn: Customer Engagement Branch
151 Patton Avenue
Asheville, NC 28801-5001

Customer Services Number: (828) 271-4800, option 2
TDD : (828) 271-4010
Fax number: (828) 271-4876

NCEI now offers free online access to the *Climatological Data* publication.
Go to : www.ncdc.noaa.gov and choose Most Popular.