



CLIMATOLOGICAL DATA

MARYLAND AND DELAWARE

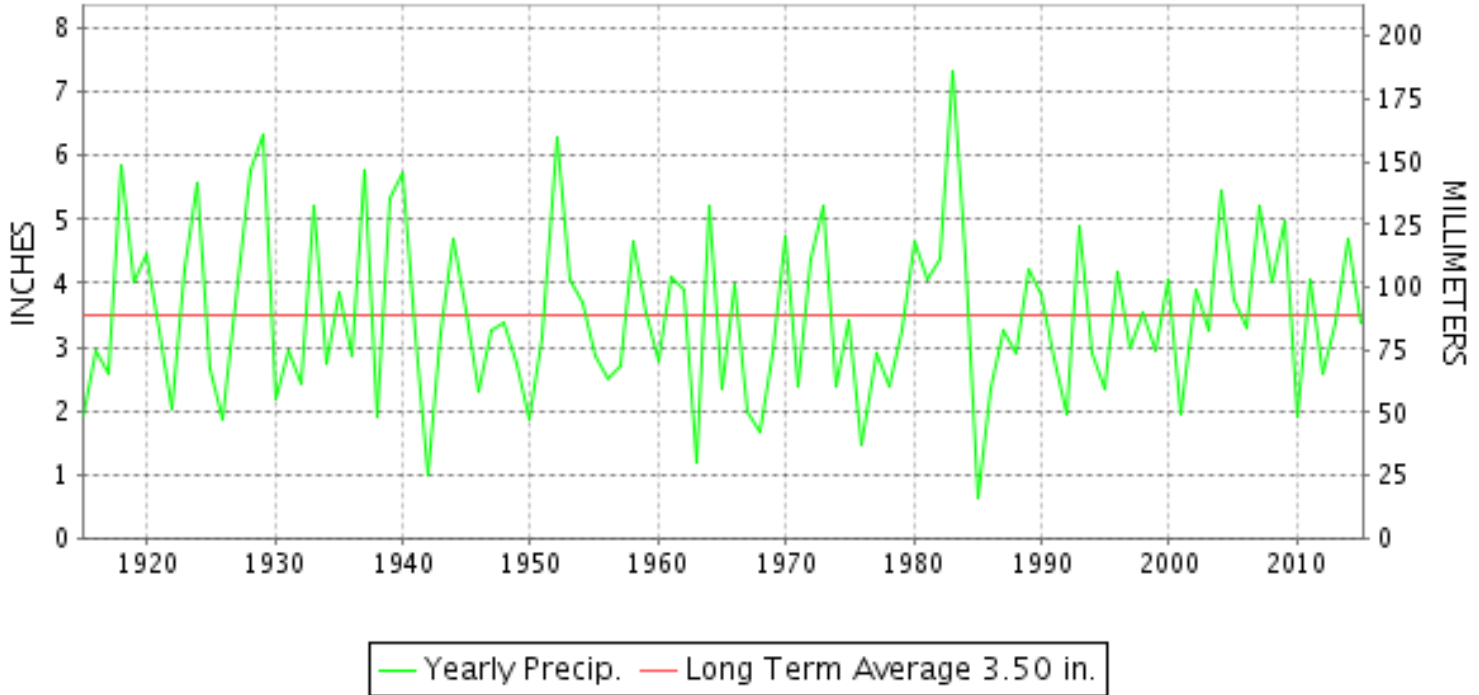
APRIL 2015

VOLUME 119 NUMBER 04

ISSN 0145-0549

GHCND Ver: 3.21-upd-2015081105

APRIL PRECIPITATION BY YEAR



TEMPERATURE AND PRECIPITATION EXTREMES

MARYLAND

HIGHEST TEMPERATURE	87	APRIL 14	CUMBERLAND 2
LOWEST TEMPERATURE	17	APRIL 06	SINES DEEP CREEK
GREATEST TOTAL PRECIPITATION	6.66		OAKLAND 1 SE
LEAST TOTAL PRECIPITATION	1.38		CONOWINGO DAM
GREATEST 1 DAY PRECIPITATION	2.24	APRIL 19	SOLOMONS
GREATEST TOTAL SNOWFALL	2.0		OAKLAND 1 SE

"I certify that this is an official publication of the National Oceanic and Atmospheric Administration (NOAA) It is compiled using information from weather observing sites supervised by NOAA/National Weather Service and received at the National Centers for Environmental Information(NCEI), Asheville, North Carolina 28801."

Director
National Centers for Environmental Information

noaa

National
Oceanic and
Atmospheric Administration

National
Environmental Satellite, Data
and Information Service

National
Centers for Environmental Information
Asheville, North Carolina

DELAWARE

HIGHEST TEMPERATURE	80	APRIL 18	WILMINGTON NEW CASTLE CO AP
LOWEST TEMPERATURE	30	APRIL 01	WILMINGTON NEW CASTLE CO AP
GREATEST TOTAL PRECIPITATION	4.29		WILMINGTON NEW CASTLE CO AP
LEAST TOTAL PRECIPITATION	2.96		DOVER
GREATEST 1 DAY PRECIPITATION	2.37	APRIL 20+	2 STATIONS

DAILY PRECIPITATION (INCHES)

STATION	TOTAL	DAY OF MONTH																																		
		01	02	03	04	05	06	07	08	09	10	11	12	13	14	15	16	17	18	19	20	21	22	23	24	25	26	27	28	29	30	31				
MARYLAND																																				
SOUTHERN																																				
EASTERN SHORE 01																																				
ASSATEAGUE	M	-	-	-	-	-	-	-	-	-	-	-	-	-	-	-	-	-	-	-	-	-	-	-	-	-	-	-	-	-	-	-	-	-		
PRINCESS ANNE	M		-	-	-	-	0.09	0.14	0.13	-	-	-	-	-	-	-	-	-	-	-	-	-	-	-	-	-	-	-	-	-	-	-	-	-	-	
SALISBURY 2N	3.90	0.15			0.07			0.05	0.15	0.02	0.05	0.14			0.94	0.39		0.01	0.13		1.39		0.01			0.40										
SALISBURY FAA AP	3.67			0.04	T			0.03	0.23	0.02	0.04				1.43			T	0.31	T	1.18		T	T		0.33	0.01						0.05			
SNOW HILL 4 N	5.26	0.10		0.04	0.04			0.06	0.08	T	0.07	0.29			1.64	1.09		T	0.23		1.32		T			0.30										
CENTRAL																																				
EASTERN SHORE 02																																				
ROYAL OAK 2 SSW	3.39	0.12		0.05	0.03			0.05	0.11	T	0.04	T			0.65	0.22			0.22	0.05		1.38	0.22	T			0.25									
LOWER SOUTHERN 03																																				
MECHANICSVILLE 5 NE	4.47	T			0.11			T	0.12	0.45	0.02	0.02			T	1.05		0.20				1.78	0.34	0.01		0.37		T	T							
SOLOMONS	4.96			0.05		0.04	0.09	0.16	0.02	0.30			0.03	1.47		0.10				2.24	T		0.01			0.32								0.13		
UPPER SOUTHERN 04																																				
BALTIMORE WASH INTL AP	4.30			0.09	0.01			0.12	0.72	0.58	0.03				0.36	T	0.02	0.25		0.14	1.35	0.10	0.02			0.18								0.33		
BELTSVILLE	4.13	0.02			0.09			0.01	0.96	0.28	0.03				0.32	0.26		0.18	0.06			1.17	0.52	T		0.23										
DALECARLIA RSVR	M 4.19		0.03		0.22				0.18	0.10	0.05				0.30	0.32	-		0.17			1.87	0.81	0.03		0.10		0.01								
LAUREL 3 W	4.35			0.67				0.08	1.25	0.06	0.05				0.35			0.20		0.07	1.42	0.15	0.05													
MARYLAND SCIENCE CENTER	2.95			0.07				0.04	0.40	0.26	0.03				0.17			0.11		0.08	1.75	0.04														
NATL ARBORETUM DC	3.21			T	0.18			0.03	0.27	0.07	0.04	0.02			0.18	0.38		0.10		0.08	0.98	0.69		T		0.26						0.01				
OXON HILL	3.19	0.02			0.19			0.02	0.01	0.04	0.03	0.01			0.14	0.84		0.05	0.01		1.04	0.46		T		0.33						T				
UPPER MARLBORO 3 NNW	3.54	0.06		0.13				0.02	0.15	0.15	0.05				0.19	0.64		0.06			1.45	0.42		T		0.22										
NORTHERN CENTRAL 06																																				
ABERDEEN PHILLIPS FLD	2.87	0.05			0.02			0.06	0.17	0.06	0.23	0.01			0.02	0.15		0.27			1.16	0.65		0.02												
BRIGHTON DAM	3.89	0.02			0.15			0.04	0.80	0.16	0.40	T			0.10	0.16		0.20			1.43	0.10		0.03		0.30										
CONOWINGO DAM	1.38														0.18		0.23			0.97																
CYLBURN	A 3.22	0.03		*	0.13 _a			0.02	0.33	0.08	0.25	T			0.04	0.15		0.28			*	1.86 _a		0.05												
DAMASCUS 3 SSW	3.14			0.17	0.06			0.21	0.38	0.07	0.10				0.20	0.06	T	0.02		0.08	1.05	0.04				0.14	0.11	T					0.45			
EMMITSBURG 2 SE	3.09	0.10		T	0.11	0.01		T	0.12	0.14	0.04	T			0.15	0.12		0.11	T		1.85	0.26		0.07												
FREDERICK 2 NNE	M	-	-	-	-	-	-	-	-	-	-	-	-	-	-	-	-	-	-	-	-	-	-	-	-	-	-	-	-	-	-	-	-	-	-	
MILLERS 4 NE	2.39	0.06		0.15	0.02			T	0.32	0.02	0.06				0.16	0.06		0.17			1.10	0.10	0.17	T									T			
SMITHSBURG 2NW	M 2.05			-	-	-		T	0.10	0.20	0.10	0.05			0.17	0.13	-	0.10			0.85	0.25		0.10		-	-									
APPALACHIAN																																				
MOUNTAIN 07																																				
CUMBERLAND 2	3.65	0.01		0.19	0.17			0.06	0.15	0.31	0.03	0.13			0.34	0.06		0.21	0.01		1.46	0.19	T	0.12		0.18							0.03			
FROSTBURG 2	4.57	0.01		0.30	0.13			0.10	0.15	0.27	0.08	0.38			0.34	0.03		0.46			1.28	0.08	0.02	0.31		0.25				0.11			0.27			
SHARPSBURG 5 S	3.40	0.02		0.03	0.19	T		0.14	0.03	0.13	0.09	T			0.11	0.34		0.12			1.57	0.24		0.15		0.24				T						
WILLIAMSPORT	M 2.92			0.23	0.03	-	-	-	-	0.01	0.37	0.05	0.03		0.15	0.12		0.05			1.78	0.10		-												
ALLEGHENY PLATEAU 08																																				
OAKLAND 1 SE	6.66			0.46	0.26	0.40		0.10	0.86	0.55	0.25	0.65		0.01	0.45	0.10		0.24	0.12	0.01	0.78	0.21	0.03	0.58	0.02	0.50					0.08					
SAVAGE RIVER DAM	M 3.95			0.23	0.13			0.05	0.12	0.40	0.11	0.50			0.30	0.10		0.30	0.04		0.85	0.14	T	-		0.44						0.05		0.19		

DAILY PRECIPITATION (INCHES)

STATION	TOTAL	DAY OF MONTH																														
		01	02	03	04	05	06	07	08	09	10	11	12	13	14	15	16	17	18	19	20	21	22	23	24	25	26	27	28	29	30	31
SINES DEEP CREEK	MA 5.79	0.07		0.47	*	*	0.60 _a	0.10	0.30	0.45	0.07	*	*	0.70 _a	-	-	0.10	0.33	*	*	1.13 _a	0.30		0.60		*	*	0.47 _a	0.10		-	
DELAWARE NORTHERN 01																																
WILMINGTON NEW CASTLE CO AP	4.29			0.10	0.02			0.78	0.05	T	0.08			0.14			0.25		T	2.37	0.46	0.04							T			
WILMINGTON PORTER RES	4.16			0.15	T		0.02	0.24	0.11	0.04	0.07			0.16			0.27		T	2.37	0.73	T										
SOUTHERN 02																																
DOVER	A 2.96	0.11		0.04				0.01	0.65	0.02	0.08			0.61	0.09		*	*	*	1.08 _a	0.27	T										

DAILY TEMPERATURES (°F)

STATION	OB. TIME	MAX/MIN	DAY OF MONTH																															AVERAGE		
			01	02	03	04	05	06	07	08	09	10	11	12	13	14	15	16	17	18	19	20	21	22	23	24	25	26	27	28	29	30	31			
MARYLAND SOUTHERN EASTERN SHORE 01 ASSATEAGUE	VA	MAX MIN																																		M M M M
PRINCESS ANNE	17	MAX MIN	68 33					72 44	69 48	65 42				76 38							76 60															
SALISBURY 2N	17	MAX MIN		67 33	75 34		61 36	74 44	72 45	73 44	46 42	77 42	76 49	76 36	73 45	65 42	73 42	75 42	77 57	77 54	77 76	75 58	73 46	60 42	57 39	62 42	61 37	68 45	74 52	73 49				70.3 43.9		
SALISBURY FAA AP	24	MAX MIN	56 34	66 29	75 58	70 34	63 29	72 44	68 49	45 42	78 41	67 42	66 31	75 37	67 49	65 47	70 41	75 52	78 55	64 53	76 60	70 48	73 44	58 36	56 35	50 40	62 35	61 46	67 43	74 49	71 49			66.2 42.8		
SNOW HILL 4 N	17	MAX MIN	64 33	66 29	76 55	76 54	64 28	74 43	71 56	68 44	48 42	82 42	80 42	66 32	73 37	71 60	66 42	71 41	76 55	77 52	75 54	76 59	73 43	74 42	70 37	59 32	57 42	63 34	63 43	69 30	75 43	75 44			69.9 43.4	
CENTRAL EASTERN SHORE 02 ROYAL OAK 2 SSW	17	MAX MIN	63 34	64 34	71 54	70 52	64 36	72 39	68 56	64 43	48 39	66 42	65 45	65 36	73 47	65 52	63 47	72 54	76 52	77 52	67 46	78 55	73 45	73 45	65 42	58 41	52 40	63 42	63 54	68 40	74 45	74 50			67.1 45.2	
LOWER SOUTHERN 03 MECHANICSVILLE 5 NE	07	MAX MIN	72 31	59 31	71 35	73 50	59 31	66 31	76 46	69 45	48 41	47 41	72 45	67 35	68 35	78 48	64 47	65 41	70 53	78 52	78 52	69 56	79 44	74 38	73 38	60 36	59 36	50 36	61 37	60 37	68 45	74 45			66.9 41.4	
SOLOMONS	08	MAX MIN	56 41	69 49	75 54	57 38	65 47	73 52	66 45	48 42	47 42	64 42	59 42	69 48	62 54	64 50	65 45	66 47	65 48	76 57	64 54	78 57	69 51	75 45	59 41	59 43	50 43	62 45	60 47	68 50	68 55	67 52			64.0 47.7	
UPPER SOUTHERN 04 BALTIMORE WASH INTL AP	24	MAX MIN	58 31	70 36	70 60	68 38	65 36	76 36	70 47	47 41	45 41	60 41	64 44	67 33	77 42	63 50	67 45	69 55	78 53	80 51	66 52	79 46	65 42	71 37	55 38	58 33	52 41	65 38	59 41	70 45	76 44	72 47			66.1 43.0	
BELTSVILLE	08	MAX MIN	67 29	57 31	70 48	70 52	56 31	65 35	75 54	71 44	47 41	46 42	61 43	63 33	68 41	78 53	64 45	65 43	71 55	79 52	80 56	66 51	79 55	66 39	67 35	66 35	71 41	55 39	52 41	62 39	62 45	58 44	74 47			65.4 43.2
DALECARLIA RSVR	08	MAX MIN	71 32	58 34	72 46	70 51	56 36	68 40	76 40	73 45	48 42	48 42	62 43	65 37	70 45	79 55	61 46	73 56	80 51	67 56	80 51	67 55	81 45	68 40	72 38	56 38	59 40	52 40	64 45	64 40	60 45	68 43	74 49			66.6 44.2
LAUREL 3 W	24	MAX MIN	60 34	70 38	69 59	68 47	65 40	75 46	72 56	61 41	45 39	60 40	63 51	68 41	78 45	65 50	65 48	72 49	79 54	81 58	67 51	79 49	66 53	72 47	54 36	58 36	52 39	64 40	58 44	70 40	75 51	74 49			66.8 45.7	
MARYLAND SCIENCE CENTER	24	MAX MIN	58 37	70 41	69 57	69 48	67 43	78 44	67 48	48 42	46 41	62 43	64 50	64 44	76 55	64 53	67 54	71 56	75 62	79 52	70 53	78 54	68 49	73 43	54 41	58 43	55 45	65 50	59 43	69 50	77 54	73 56			66.4 48.6	
NATL ARBORETUM DC	07	MAX MIN	70 34	60 37	73 44	71 53	59 39	67 40	77 51	73 46	49 43	65 45	65 38	71 46	80 54	67 46	67 46	74 46	80 56	82 60	74 53	67 56	73 47	58 44	61 40	53 43	66 43	61 46	71 43	77 46	77 53			68.0 45.9		
OXON HILL	08	MAX MIN	70 36	60 36	72 38	71 52	57 38	67 38	77 43	72 44	50 42	48 42	67 43	66 40	71 45	80 50	66 49	66 47	73 48	81 57	82 56	68 51	84 56	68 46	71 39	58 41	61 42	56 42	65 43	60 47	70 47	76 47			67.8 44.6	
UPPER MARLBORO 3 NNW	08	MAX MIN	69 31	58 33	71 42	71 52	58 33	66 42	76 48	70 44	47 41	46 41	68 43	65 33	78 42	64 51	65 44	71 42	79 49	80 52	66 51	80 55	67 42	72 38	56 38	59 35	52 41	64 39	60 44	70 43	75 49			66.4 43.1		
NORTHERN CENTRAL 06 ABERDEEN PHILLIPS FLD	07	MAX MIN	63 31	58 31	65 33	63 51	56 39	63 40	73 40	69 44	45 40	46 41	58 41	63 35	64 36	75 47	62 48	68 50	71 51	76 54	77 56	62 51	77 57	67 42	71 40	52 38	58 32	54 34	61 42	61 46	71 44	75 44			64.1 42.6	

DAILY TEMPERATURES (°F)

STATION	OB. TIME	MAX/MIN	DAY OF MONTH																															AVERAGE
			01	02	03	04	05	06	07	08	09	10	11	12	13	14	15	16	17	18	19	20	21	22	23	24	25	26	27	28	29	30	31	
BRIGHTON DAM	08	MAX	66	55	70	67	55	65	78	71	46	45	60	63	68	77	60	63	70	76	78	64	79	68	70	54	58	51	61	59	67	72	64.5	
		MIN	28	31	46	49	34	37	37	43	40	40	40	31	41	53	42	39	40	50	56	50	52	39	34	37	33	39	38	42	40	45	40.9	
CONOWINGO DAM	07	MAX	54	63	63	54	65	71	65	45	43	50	60	61	73	57	66	67	70	78	62	74	64	68	50	56	54	61	58	66	73	72	62.1	
		MIN	30	35	41	35	38	38	45	39	39	38	36	33	41	44	44	44	50	50	50	55	42	38	37	33	34	42	42	44	47	50	41.1	
CYLBURN	08	MAX	65	57	69	67	56	65	75	68	46	44	58	62	65	74	62	66	69	77	79	64	76	65	69	51	58	53	53	58	68	74	63.8	
		MIN	33	34	40	49	42	38	50	43	39	40	41	36	48	53	47	47	52	52	54	50	54	44	38	37	35	38	42	46	45	47	43.8	
DAMASCUS 3 SSW	22	MAX	54	69	64	60	64	75	71	60	44	61	60	67	76	64	62	71	75	78	65	78	66	69	53	56	49	62	58	66	73	72	64.7	
		MIN	28	40	60	44	37	45	56	41	39	40	49	38	46	50	46	48	53	53	48	49	50	45	34	35	36	38	41	41	45	48	44.1	
EMMITSBURG 2 SE	07	MAX	63	58	69	65	64	65	75	72	48	48	55	63	67	77	60	66	71	78	79	65	77	63	67	49	58	53	61	58	70	73	64.6	
		MIN	31	30	30	48	39	38	36	46	40	40	40	32	32	44	45	45	48	46	46	49	50	43	38	37	37	33	40	39	40	40	40.1	
FREDERICK 2 NNE	07	MAX																															M	
		MIN																																M
MILLERS 4 NE	18	MAX	56	67	65	63	63	74	73	65	44	56	60	67	75	71	66	71	73	78	74	76	74	67	52	55	54	61	59	67	73	72	65.7	
		MIN	28	35	53	44	35	40	53	42	37	38	48	34	44	55	44	45	52	49	51	47	51	41	35	35	31	39	37	43	43	47	42.5	
SMITHSBURG 2NW	08	MAX	64	55				64	75	71	47	47	62	59	67	77	58		70	73	77	66	77	61	66	45		60	54	67		63.6		
		MIN	24	25			33	39	44	39	40	40	40	31	31	54	36		51	44	47	46	47	44	33	34		35	37	37		38.7		
APPALACHIAN MOUNTAIN 07																																		
CUMBERLAND 2	18	MAX	69	63	68	68	58	70	78	70	54	53	77	63	73	87	62	67	73	77	84	71	78	64	64	52	59	50	61	54	68	77	67.1	
		MIN	33	31	32	45	39	34	35	53	46	46	46	33	33	51	43	44	46	48	48	47	48	43	40	36	36	40	40	42	42	42	41.4	
FROSTBURG 2	07	MAX	62	54	65	63	47	61	71	65	48	46	69	55	68	80	55	60	65	69	74	62	72	72	55	45	51	47	58	48	59	69	60.5	
		MIN	27	28	34	37	32	36	37	48	40	40	42	32	33	47	43	45	45	45	45	43	41	40	31	29	29	34	34	35	37	40	37.6	
SHARPSBURG 5 S	07	MAX	66	59	72	68	55	66	77	75	49	48	67	61	69	79	61	64	72	77	79	67	80	64	68	52	58	51	63	56	69	73	65.5	
		MIN	25	25	43	48	29	29	33	47	41	41	41	30	30	47	39	39	50	46	46	49	44	39	31	33	31	37	35	36	38	39	38.0	
WILLIAMSPORT	06	MAX			69										69	78						70	76	64								M		
		MIN			36										34	34						50	51	48								M		
ALLEGHENY PLATEAU 08																																		
OAKLAND 1 SE	07	MAX	59	54	69	64	46	59	68	65	61	70	66	54	67	79	56	57	58	64	73	59	73	54	50	45	51	45	59	46	58	69	59.9	
		MIN	26	26	26	33	31	25	25	50	43	46	42	26	39	39	36	36	48	44	44	44	40	40	31	28	29	33	29	30	30	31	35.0	
SAVAGE RIVER DAM	08	MAX	62	55	66	63	49	59	71	65	52	49	68	55	67	80	58	60	63	67	75	62	73	56		47	53	46	60	50	60	70	60.7	
		MIN	29	28	29	41	35	30	30	48	43	43	43	30	31	43	39	39	42	46	46	46	46	39		34	34	36	32	33	36	37	37.5	
SINES DEEP CREEK	07	MAX	60	53	69			58	68	62	58	70			70			60	60			72	74	61	49	44		57	44	51		M		
		MIN	26	25	26			17	27	41	42	44			40			38	39			42	38	37	29	30		29	28	31		M		
DELAWARE NORTHERN 01																																		
WILMINGTON NEW CASTLE CO AP	24	MAX	56	66	63	64	63	74	69	45	43	57	62	66	72	62	70	68	74	80	66	76	65	71	53	56	56	63	61	71	75	73	64.7	
		MIN	30	33	53	41	39	36	44	40	39	40	44	34	41	50	45	50	54	52	49	60	50	41	38	37	31	41	41	48	48	49	43.3	
WILMINGTON PORTER RES	24	MAX	53	66	65	64	62	72	68	45	41	56	59	64	73	60	67	68	73	77	68	75	64	71	50	53	55	61	58	67	73	69	63.2	
		MIN	33	35	56	44	39	39	44	39	38	39	46	37	43	51	49	56	53	58	47	47	52	45	34	36	35	42	44	48	50	42	44.0	
SOUTHERN 02																																		
DOVER	16	MAX	63	65	64	64	62	73	71	62	44	63	64	60	74	63	64	67	77	75	74	77	77	72	66	56	56	65	61	68	76	67	66.3	

MARYLAND AND DELAWARE
201504

DAILY TEMPERATURES (°F)

STATION	OB. TIME	MAX/MIN	DAY OF MONTH																															AVERAGE
			01	02	03	04	05	06	07	08	09	10	11	12	13	14	15	16	17	18	19	20	21	22	23	24	25	26	27	28	29	30	31	
		MIN	33	35	58	52	38	45	58	42	38	40	45	35	43	52	46	46	53	55	54	50	56	56	43	36	33	43	40	47	45	50		45.6

SNOWFALL AND SNOW ON GROUND (INCHES)

STATION		DAY OF MONTH																																
		01	02	03	04	05	06	07	08	09	10	11	12	13	14	15	16	17	18	19	20	21	22	23	24	25	26	27	28	29	30	31		
MARYLAND																																		
SOUTHERN																																		
EASTERN SHORE 01																																		
ASSATEAGUE	SNOWFALL																																	
PRINCESS ANNE	SNOWFALL																																	
SALISBURY 2N	SNOWFALL																																	
SALISBURY FAA AP	SNOWFALL																																	
	SN ON GND																																	
SNOW HILL 4 N	SNOWFALL																																	
NORTHERN CENTRAL 06																																		
DAMASCUS 3 SSW	SNOWFALL																																	
	SN ON GND																																	
EMMITSBURG 2 SE	SNOWFALL																																	
	SN ON GND																																	
	WTR EQUIV																																	
FREDERICK 2 NNE	SNOWFALL																																	
MILLERS 4 NE	SNOWFALL																																	
	SN ON GND																																	
	WTR EQUIV																																	
SMITHSBURG 2NW	SNOWFALL																																	
APPALACHIAN																																		
MOUNTAIN 07																																		
SHARPSBURG 5 S	SNOWFALL	-	-	-	-	-	-	-	-	-	-	-	-	-	-	-	-	-	-	-	-	-	-	-	-	-	-	-	-	-	-	-		
	SN ON GND	-	-	-	-	-	-	-	-	-	-	-	-	-	-	-	-	-	-	-	-	-	-	-	-	-	-	-	-	-	-	-		
WILLIAMSPORT	SNOWFALL																																	
ALLEGHENY PLATEAU 08																																		
OAKLAND 1 SE	SNOWFALL																																	
	SN ON GND																																	
SAVAGE RIVER DAM	SNOWFALL																																	
SINES DEEP CREEK	SNOWFALL																																	
DELAWARE																																		
NORTHERN 01																																		
WILMINGTON NEW CASTLE CO AP	SNOWFALL																																	
	SN ON GND																																	
WILMINGTON PORTER RES	SNOWFALL																																	
	SN ON GND																																	

Snowfall: Includes snow and ice. Values for NWS stations (J index note) are Mid-Mid (LST).

Snow on ground: Includes snow, sleet, ice, and hail. Values for NWS stations (J index note) are observed at 12 UTC (GMT).

Water Equivalent: Given for NWS stations (J index note) only, when snow depth is 2 inches or more, and is measured at 18 UTC (GMT)

PAN EVAPORATION AND WIND

STATION		DAY OF MONTH																															TOTAL OR AVERAGE
		01	02	03	04	05	06	07	08	09	10	11	12	13	14	15	16	17	18	19	20	21	22	23	24	25	26	27	28	29	30	31	
MARYLAND UPPER SOUTHERN 04 BELTSVILLE	WIND	-	49	177	115	122	69	100	77	50	46	47	82	28	90	30	35	57	30	35	88	74	60	96	95	81	33	35	84	64	24	2041E	
	EVAP	-	0.18	0.19	0.08	0.29	0.19	0.23	0.12	0.00	0.01	0.03	0.26	0.17	0.21	0.02	0.13	0.19	0.14	0.23	0.21	0.27	0.30	0.16	0.16	0.24	0.05	0.16	0.16	0.21	0.19	4.94E	
	MAX	65	65	67	66	63	65	73	73	50	48	56	69	73	78	62	64	74	80	84	70	81	72	68	54	64	52	71	61	72	81	67.4	
	MIN	-	39	39	51	39	40	40	48	42	42	43	40	40	47	48	46	47	57	56	52	57	46	41	38	39	42	43	42	43	49	44.7	
UPPER MARLBORO 3 NNW	WIND	-	-	-	-	-	-	-	-	-	-	-	-	-	-	-	-	-	-	-	-	-	-	-	-	-	-	-	-	-	M		
	EVAP	-	-	-	-	-	-	-	-	-	-	-	-	-	-	-	-	-	-	-	-	-	-	-	-	-	-	-	-	-	M		
	MAX	-	-	-	-	-	-	-	-	-	-	-	-	-	-	-	-	-	-	-	-	-	-	-	-	-	-	-	-	-	M		
	MIN	-	-	-	-	-	-	-	-	-	-	-	-	-	-	-	-	-	-	-	-	-	-	-	-	-	-	-	-	-	M		
ALLEGHENY PLATEAU 08 SAVAGE RIVER DAM	WIND	-	-	-	-	-	-	-	-	-	-	-	-	-	-	-	-	-	-	-	-	-	-	-	-	-	-	-	-	M			
	EVAP	-	-	-	-	-	-	-	-	-	-	-	-	-	-	-	-	-	-	-	-	-	-	-	-	-	-	-	-	-	M		
	MAX	-	-	-	-	-	-	-	-	-	-	-	-	-	-	-	-	-	-	-	-	-	-	-	-	-	-	-	-	-	-		
	MIN	-	-	-	-	-	-	-	-	-	-	-	-	-	-	-	-	-	-	-	-	-	-	-	-	-	-	-	-	-	M		

Evaporation: Is measured in hundredths of inches.

Wind: Is measured in miles.

Max and Min: The maximum and minimum temperatures (Fahrenheit) of the water in the evaporation pan.

STATION INDEX

STATION	INDEX NO.	DIVISION	COUNTY	LATITUDE	LONGITUDE	ELEVATION (IN FEET)	OBSERVATION TIME AND TABLES			
							LOCAL STD TIME			
							TEMP	PRECIP	EVAP	SPECIAL SEE (NOTES)
MARYLAND										
ABERDEEN PHILLIPS FLD	0015	06	HARFORD	39 28	76 10W	57	07	07		CH
ASSATEAGUE	0335	01	WORCESTER	38 4	75 13W	10	VAR	VAR		H
BALTIMORE WASH INTL AP R	0465	04	ANNE ARUNDEL	39 10	76 41W	156	24	24		HJ
BELTSVILLE	0700	04	PRINCE GEORGE'S	39 2	76 56W	145	08	08	08	CH
BRIGHTON DAM	1125	06	MONTGOMERY	39 11	77 0W	330	08	08		H
CONOWINGO DAM	2060	06	HARFORD	39 39	76 11W	40	07	07		H
CUMBERLAND 2	2282	07	ALLEGANY	39 39	78 45W	730	18	18		H
CYLBURN	2308	06	BALTIMORE	39 21	76 39W	235	08	08		H
DALECARLIA RSVR	2325	04	DISTRICT OF COLUMBIA	38 56	77 7W	150	08	08		H
DAMASCUS 3 SSW	2336	06	MONTGOMERY	39 16	77 14W	700	22	22		H
EMMITSBURG 2 SE	2906	06	FREDERICK	39 41	77 17W	403	07	07		H
FREDERICK 2 NNE	3353	06	FREDERICK	39 26	77 24W	280	07	07		H
FROSTBURG 2	3415	07	ALLEGANY	39 40	78 56W	2170	07	07		H
LAUREL 3 W	5111	04	PRINCE GEORGE'S	39 5	76 54W	400	24	24		H
MARYLAND SCIENCE CENTER R	5718	04	BALTIMORE (CITY)	39 17	76 37W	20	24	24		H
MECHANICSVILLE 5 NE	5865	03	ST. MARY'S	38 28	76 42W	100	07	07		H
MILLERS 4 NE	5934	06	CARROLL	39 43	76 48W	860	18	18		CH
NATL ARBORETUM DC	6350	04	DISTRICT OF COLUMBIA	38 55	76 58W	50	07	07		H
OAKLAND 1 SE	6620	08	GARRETT	39 25	79 24W	2420	07	07		H
OXON HILL	6800	04	PRINCE GEORGE'S	38 47	76 60W	120	08	08		H
PRINCESS ANNE	7330	01	SOMERSET	38 13	75 41W	20	17	17		H
ROYAL OAK 2 SSW	7806	02	TALBOT	38 43	76 11W	10	17	17		H
SALISBURY 2N	8004	01	WICOMICO	38 24	75 36W	20	17	17		H
SALISBURY FAA AP	8005	01	WICOMICO	38 20	75 31W	48	24	24		H
SAVAGE RIVER DAM	8065	08	GARRETT	39 31	79 8W	1495	08	08	08	CH
SHARPSBURG 5 S	8207	07	WASHINGTON	39 24	77 43W	500	07	07		H
SINES DEEP CREEK	8315	08	GARRETT	39 31	79 25W	2040	07	07		H
SMITHSBURG 2NW	8371	06	WASHINGTON	39 40	77 35W	670	08	08		H
SNOW HILL 4 N	8380	01	WORCESTER	38 14	75 23W	30	17	17		H
SOLOMONS	8405	03	CALVERT	38 19	76 27W	12	08	08		H
UPPER MARLBORO 3 NNW	9070	04	PRINCE GEORGE'S	38 51	76 46W	130	08	08	08	H
WILLIAMSPORT	9570	07	WASHINGTON	39 37	77 51W	360	06	06		H
DELAWARE										
DOVER	2730	02	KENT	39 9	75 30W	30	16	16		H
FRANKFORD	3500	02	SUSSEX	38 32	75 14W	41		07		H
MILTON 1SE	6104	02	SUSSEX	38 46	75 17W	33		07		H
WILMINGTON NEW CASTLE CO AP R	9595	01	NEW CASTLE	39 40	75 36W	79	24	24		HJ
WILMINGTON PORTER RES	9605	01	NEW CASTLE	39 46	75 32W	270	24	24		H

REFERENCE NOTES

STATION NAMES: Name of the city, town or locality. Figures and letters following the station names indicate the distance in miles and direction from the post office or town community center.

DIVISIONS: Areas within a state of similar climatological characteristics. Division averages are calculated using data from stations that record temperature and/or precipitation. Station Precipitation totals flagged with an 'F' or 'M' are excluded from the Divisional Average calculations of precipitation. Stations with monthly Temperature averages flagged with an 'F' or 'M' are included in the Divisional Average if there are no more than 9 flagged or missing daily values in the month, else they are excluded from the divisional average for temperature.

NORMALS: The average value of the meteorological element over a time period. Effective 1 January 2012, the averaging period is 1981 to 2010. The normals for National Weather Service localities have been adjusted so as to be representative for the current observation site.

MONTHLY DEGREE DAY TOTALS: One heating (cooling) degree day is accumulated for each whole degree that the daily mean temperature is below (above) 65 degrees Fahrenheit.

PRECIPITATION: Values shown in hundredths of inches are water equivalent totals, i.e., total of liquid and melted frozen precipitation. In the "Monthly Summarized Data" table the total snow and sleet values shown in tenths of inches are unmelted amounts. The max depth on ground values of snow and sleet shown in whole inches are cumulative unmelted amounts. The number of days with .10, .50, 1.00 or more refers to water equivalents.

PRECIPITATION QUALITY CONTROL: The NCEI quality control process may flag precipitation data that are spatially inconsistent, exceed climatological limits, or are inconsistent with prevailing weather patterns.

TEMPERATURE: Original temperature values are given in the "Daily Temperature" table. Summary temperature information (averages, departures, extremes, monthly degree day totals) is based on the values labeled MAX/MIN.

WIND: (As shown in the "Evaporation and Wind" table) the total wind movement in miles over the evaporation pan as determined by an anemometer recorder located 6-8 inches above the pan.

SYMBOLS AND LETTERS USED IN THE STATION INDEX TABLE

C Station is equipped with recording rain gage (R) but values in this bulletin are from a non-recording rain gage unless indicated by an R.
G Observations appear in the "Soil Temperatures" table.
H Observations appear in the "Snowfall and Snow on the Ground" table.
J Station also published as a Local Climatological Data publication.
VAR Observation time varies.
SR / SS Observation time near sunrise / Observation time near sunset, respectively.

SYMBOLS AND LETTERS USED IN THE DATA TABLES

(DAILY DATA ARE FOR THE 24 HOURS IMMEDIATELY PRECEDING OBSERVATION TIME.)

BLANK Entries in the "Monthly Summarized Data" table indicate no record.
BLANK Entries in the "Daily Precipitation" and "Snowfall and Snow on the Ground" tables indicate zero.
BLANK Entries in the "Daily Temperature" table indicate a missing record

- No record. Data not recorded or not received in time for publication.
+ Precipitation or temperature extremes occurred on one or more previous dates during the month.
* Rain gage not read. Precipitation is included in the amount following the asterisks.
Time distribution may not be known. A * preceding the monthly total indicates precipitation amount is being carried forward to next month's total, and may include amounts from the previous month(s).
a As a subscript, indicates accumulated total.
A Amount of precipitation is the total of observer's entries for the current month. It may include precipitation that occurred during the previous month. Refer to earlier bulletin to determine date of last reading. (Hawaii stations)
B Divisional Departure from normals are computed using 1981-2010 normals.
E Normalized HDD/CDD Calculation. E is appended to the HDD/CDD Calculation when 1-9 individual daily

and/or TMIN values are missing and a Normalized HDD/CDD Calculation is provided. M appears alone if 10 or more daily values are missing.

F Monthly calculation flagged value. F is appended to average and/or total values computed which exclude one or more daily data values that have been flagged by the GHCN-Daily Dataset
M Insufficient or partial data. M is appended to average and/or total values computed with 1-9 daily values missing. M appears alone if 10 or more daily values are missing, (8 or more for wind and evaporation).
N Indicates snow fall or Snowdepth totals are computed with one or more missing days.
R Amounts from recording rain gage.
T Trace. An amount too small to measure.

SEASONAL TABLES: Monthly and seasonal snowfall and heating degree days for the 12 months ending with the June data are published in the July issue of this bulletin. Cooling degree days for the calendar year are published in the "Climatological Data Annual Summary."

Information concerning the history of changes in locations, exposure, etc. of substations is kept on file at the National Centers for Environmental Information. Historical information of regular National Weather Service Offices may be obtained from the "Local Climatological Data" annual publication. The contents of this publication may be reprinted or otherwise used freely, with proper credit to the National Centers For Environmental Information. The data are also available digitally.

Effective with the January 2011 Data-Month, COOP Observer Names are no longer included in the Monthly and Annual Climatological Data Publications. This information is not published to ensure the privacy of personal information pursuant to Section 208 of the E-Government Act of 2002 (44 USC 3601).

As of the 2011 Data-Year, Station and Climate Division Maps are no longer being included in the CD Publications. NCEI's Products Branch provides updated Station Maps for various data networks via the Historical Observing Metadata Repository: <http://www.ncdc.noaa.gov/homr>.

The GHCN-Daily Quality Control Flags shown below are displayed as superscripts with the data. For more Information on Global Historical Climatology Network - Daily and flags, see: <http://www.ncdc.noaa.gov/oa/climate/ghcn-daily/> and Comprehensive Automated Quality Assurance of Daily Surface Observations. Durre, Imke, Matthew J. Menne, Byron E. Gleason, Tamara G. Houston, Russell S. Vose, 2010: J. Appl. Meteor. Climatol., 49, 16151633. doi: 10.1175/2010JAMC2375.1

Blank = Passed All checks	N = failed naught check
D = failed duplicate check	O = failed climatological outlier check
G = failed gap check	R = failed lagged range check
I = failed internal consistency check	S = failed spatial consistency check
K = failed streak/frequent-value check	T = failed temporal consistency check
L = failed check on length of multiday period	W = temperature too warm for snow
M = failed megaconsistency check	X = failed bounds check
	Z = flagged as a result of an official Datzilla investigation

Beginning with the January 2013 CD Publication, monthly mean temperature calculations have changed to the National Data Stewardship Team standard. Monthly maximum and minimum temperatures are not rounded until after the monthly mean temperature is calculated. This is the most accurate outcome, but may be slightly different from the mean derived from rounded monthly maximum and minimum.

Processing Updates and Errata: The CD Publications are periodically reproduced to include the addition of late reports and reported corrections. The GHCND data version noted on the cover of the publication provides the generation date.

The climate division temperature and precipitation values in this publication are based on simple averages from the current set of NWS-Designated Open and Published COOP and First Order Sites within each division. These values differ from those found in NCEI's nClimDiv product. Beginning in February 2014, the nClimDiv product is used by NCEI's Monitoring Branch and in its monthly climate reports. For more details on nClimDiv, please go to <http://www.ncdc.noaa.gov/monitoring-references/maps/us-climate-divisions.php>.

These and other publications are available from the National Centers for Environmental Information

Hourly Precipitation Data

This publication contains hourly precipitation amounts obtained from recording rain gages located at National Weather Service, Federal Aviation Administration, and cooperative observer stations. Published data are displayed in inches and tenths or inches and hundredths at local standard time. HPD includes maximum precipitation for nine (9) time periods from 15 minutes to 24 hours, for selected stations.

Climatological Data

Monthly editions contain station daily maximum and minimum temperatures and precipitation. Some Stations provide daily snowfall, snow depth, evaporation, and soil temperature data. Each edition also contains monthly summaries for heating and cooling degree days (65 degree F base). The July issue contains a recap of monthly heating degree days and snow data for the preceding July through June.

The Annual issue contains monthly and annual averages of temperature, precipitation, temperature extremes, freeze data, soil temperatures, evaporation, and a recap of monthly cooling degree days.

Storm Data

Monthly issues contain a chronological listing, by states, of occurrences of storms and unusual weather phenomena. Reports contain information on storm paths, deaths, injuries, and property damage. An "Outstanding storms of the month" section highlights severe weather events with photographs, illustrations, and narratives. The December issue includes annual tornado, lightning, flash flood, and tropical cyclone summaries.

Monthly Climatic Data for the World

This publication contains monthly means for temperature, pressure, precipitation, vapor pressure, and sunshine for approximately 2,000 surface data collection stations worldwide and monthly mean upper air temperatures, dew point depressions, and wind velocities for approximately 500 observing sites.

Local Climatological Data

LCD publications summarize temperature, relative humidity, precipitation, cloudiness, wind speed and direction observations for several hundred cities in the U.S. and its territories. Each monthly publication also contains 3 hourly weather observations for that month and a hourly summary of precipitation. Annual LCD publications contain a summary of the past calendar year as well as historical averages and extremes.

For Information Call:

(828) 271-4800 Option 2

(828) 271-4010 (TDD)

(828) 271-4876 (Fax)

NOAA National Centers for Environmental Information
Attn: Customer Engagement Branch
151 Patton Avenue
Asheville, NC 28801-5001

Customer Services Number: (828) 271-4800, option 2
TDD : (828) 271-4010
Fax number: (828) 271-4876

NCEI now offers free online access to the *Climatological Data* publication.
Go to : www.ncdc.noaa.gov and choose Most Popular.