



CLIMATOLOGICAL DATA

MARYLAND AND DELAWARE

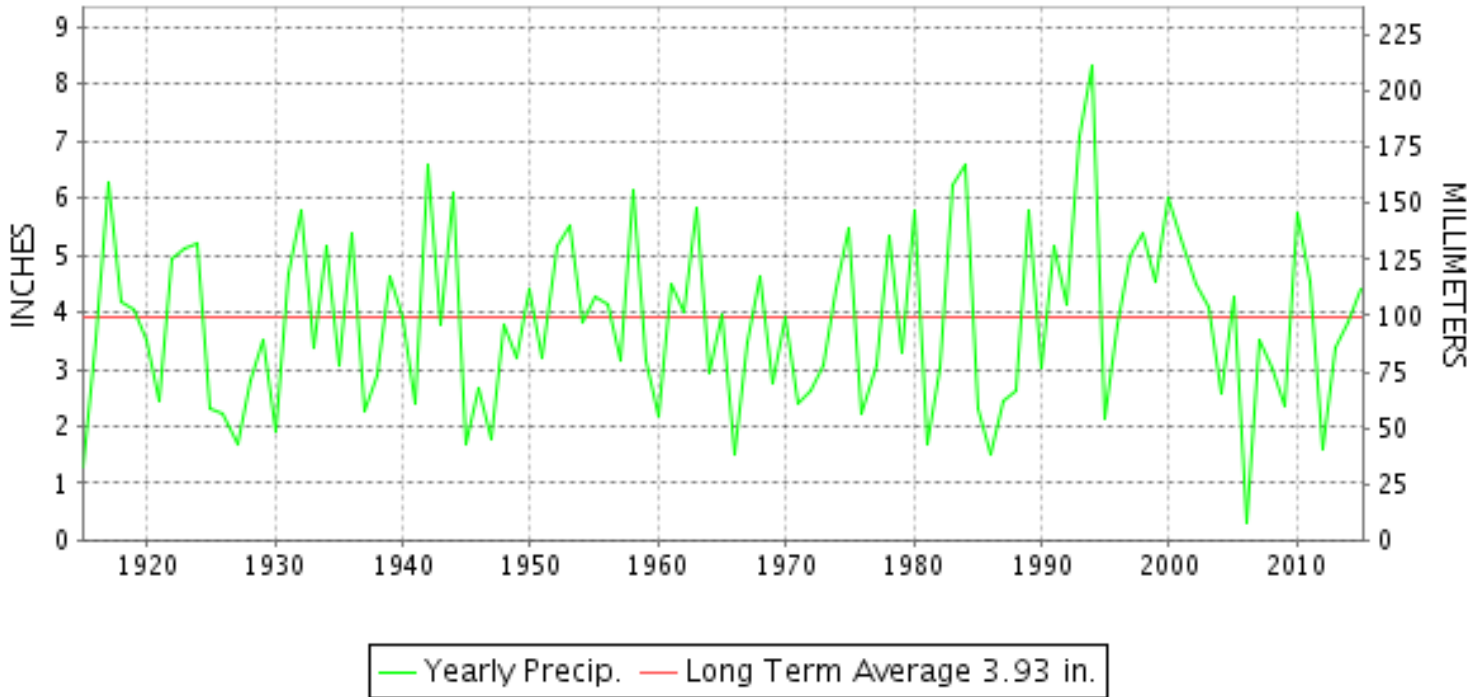
MARCH 2015

VOLUME 119 NUMBER 03

ISSN 0145-0549

GHCND Ver: 3.21-upd-2015070705

MARCH PRECIPITATION BY YEAR



TEMPERATURE AND PRECIPITATION EXTREMES

MARYLAND

HIGHEST TEMPERATURE	77	MARCH 27	CUMBERLAND 2
LOWEST TEMPERATURE	-8	MARCH 07	OAKLAND 1 SE
GREATEST TOTAL PRECIPITATION	7.39		SINES DEEP CREEK
LEAST TOTAL PRECIPITATION	2.42		CUMBERLAND 2
GREATEST 1 DAY PRECIPITATION	1.57	MARCH 05	MILLERS 4 NE
GREATEST TOTAL SNOWFALL	17.2		MILLERS 4 NE
GREATEST DEPTH OF SNOW OR ICE	13		2 STATIONS

"I certify that this is an official publication of the National Oceanic and Atmospheric Administration (NOAA) It is compiled using information from weather observing sites supervised by NOAA/National Weather Service and received at the National Centers for Environmental Information(NCEI), Asheville, North Carolina 28801."

Director
National Centers for Environmental Information

noaa

National
Oceanic and
Atmospheric Administration

National
Environmental Satellite, Data
and Information Service

National
Centers for Environmental Information
Asheville, North Carolina

DELAWARE

HIGHEST TEMPERATURE	71	MARCH 26	WILMINGTON NEW CASTLE CO AP
LOWEST TEMPERATURE	5	MARCH 07+	WILMINGTON NEW CASTLE CO AP
GREATEST TOTAL PRECIPITATION	5.39		WILMINGTON NEW CASTLE CO AP
LEAST TOTAL PRECIPITATION	4.45		WILMINGTON PORTER RES
GREATEST 1 DAY PRECIPITATION	1.35	MARCH 14	WILMINGTON PORTER RES
GREATEST TOTAL SNOWFALL	10.8		WILMINGTON PORTER RES
GREATEST DEPTH OF SNOW OR ICE	8		WILMINGTON PORTER RES

MONTHLY STATION AND DIVISION SUMMARY

STATION	TEMPERATURE (°F)											PRECIPITATION (IN)													
	AVERAGE MAXIMUM	AVERAGE MINIMUM	AVERAGE	DEPARTURE FROM NORMAL	HIGHEST	DATE	LOWEST	DATE	HEATING DEG. DAYS	COOLING DEG. DAYS	NO. OF DAYS				TOTAL	DEPARTURE FROM NORMAL	GREATEST 24 HOURS	DATE	ICE PELLETS, SNOW			NO. OF DAYS			
											MAX		MIN						TOTAL	MAX DEPTH ON GROUND	DATE	.10 OR MORE	.50 OR MORE	1.00 OR MORE	
											>=90	<=32	<=32	<=0											
APPALACHIAN MOUNTAIN 07																									
CUMBERLAND 2	52.2	27.4	39.8	-3.9	77	27	5	06	775	0	0	2	22	0	2.42	-0.95	0.54	11	M 5.2	M 2	06	7	1	0	
FROSTBURG 2	45.0	22.7	33.9	-2.2	71	27	-3	06	957	0	0	5	26	2	3.59	-0.35	0.78	04	M 10.1	8	01	8	2	0	
SHARPSBURG 5 S	47.9	23.5	35.7	-5.5	76	27	-4	07+	902	0	0	5	27	2	3.78	0.11	1.09	05	M 11.1	8	06	9	2	1	
WILLIAMSPORT	M	M	M		58	10	22	30	705E	0	0	0	1	0	MA 2.75	-1.48	0.58	05	M 9.6	7	06	8	1	0	
--DIVISIONAL DATA----->			36.5	-4.2B											3.26	-0.16B									
ALLEGHENY PLATEAU 08																									
OAKLAND 1 SE	46.7	23.7	35.2	-1.0	67	26+	-8	07	915	0	0	4	20	3	6.83	2.70	1.20	11	F 8.2	7	07	12	5	3	
SAVAGE RIVER DAM	46.3M	24.5M	35.4M	-2.4	70	27	0	07+	912E	0	0	4	25	2	M 3.42	0.02	0.79	11	M 3.0	3	03	7	3	0	
SINES DEEP CREEK	46.8M	20.5M	33.6M		70	27	-5	06	964E	0	0	2	21	2	MA 7.39		1.35	04	M 14.7	13	06	7	3	3	
--DIVISIONAL DATA----->			34.7	-2.3B											6.83	2.96B									
DELAWARE NORTHERN 01																									
WILMINGTON NEW CASTLE CO AP	47.5	28.2	37.8	-5.2	71	26	5	07+	834	0	0	2	22	0	5.39	1.47	1.12	14	8.6	6	07	11	5	1	
WILMINGTON PORTER RES	47.8MF	28.7M	38.2MF	-4.1	68	26	9	06	816E	0	0	2	17	0	4.45	-0.07	1.35	14	M 10.8	8	05	9	3	1	
--DIVISIONAL DATA----->			38.0	-4.7B											4.92	0.81B									
SOUTHERN 02																									
DOVER	51.3	30.8	41.1	-4.1	69	17	10	07+	735	0	0	2	17	0	4.50	0.19	0.90	01	6.5	6	05	10	3	0	
--DIVISIONAL DATA----->			41.1	-3.3B											4.50	0.10B									

DAILY PRECIPITATION (INCHES)

STATION	TOTAL	DAY OF MONTH																																
		01	02	03	04	05	06	07	08	09	10	11	12	13	14	15	16	17	18	19	20	21	22	23	24	25	26	27	28	29	30	31		
MARYLAND																																		
SOUTHERN																																		
EASTERN SHORE 01																																		
ASSATEAGUE	M	-	-	-	-	-	-	-	-	-	-	-	-	-	-	-	-	-	-	-	-	-	-	-	-	-	-	-	-	-	-	-	-	
PRINCESS ANNE	M	-	-	-	0.09	-	-	-	-	0.05	-	0.06	-	-	-	-	-	-	-	-	-	-	-	-	-	-	-	-	-	-	-	-	0.03	0.11
SALISBURY 2N	4.37	0.33	0.25	0.03	0.25	0.95	0.08	-	-	0.03	0.04	-	-	-	0.94	0.04	-	-	-	-	-	-	-	-	-	-	0.47	0.23	-	-	-	-	-	
SALISBURY FAA AP	4.07	0.47	-	0.10	0.11	0.70	-	-	-	0.06	0.01	-	0.04	0.90	-	-	-	-	-	-	-	-	-	-	T	0.62	0.24	T	-	-	0.06	0.11		
SNOW HILL 4 N	4.03	0.30	0.43	0.10	0.10	T	0.70	-	-	-	T	0.04	-	0.46	0.47	-	-	-	-	-	-	-	-	-	-	0.39	0.17	0.06	-	-	0.10	-		
CENTRAL																																		
EASTERN SHORE 02																																		
ROYAL OAK 2 SSW	4.75	0.40	0.15	0.05	0.47	1.10	-	-	-	-	0.06	0.14	-	-	0.84	0.02	-	-	-	-	-	-	-	-	-	0.05	0.35	0.40	T	-	0.04	T		
LOWER SOUTHERN 03																																		
MECHANICSVILLE 5 NE	4.22	-	0.52	-	0.35	0.53	0.89	-	-	-	-	0.16	0.02	-	0.37	0.28	-	-	-	-	-	-	-	-	-	-	T	0.49	0.23	-	-	-		
SOLOMONS	A 3.11	*	0.60 _a	0.09	T	0.40	0.35	*	*	0.00 _a	T	0.09	0.01	-	*	*	0.60 _a	-	-	-	-	-	-	*	0.10 _a	T	0.20	0.37	*	0.03 _a	-	0.02		
UPPER SOUTHERN 04																																		
BALTIMORE WASH INTL AP	4.67	0.61	-	0.12	0.41	0.89	-	-	-	-	0.50	T	-	0.04	0.72	-	T	-	-	-	-	-	-	-	-	0.01	0.20	0.43	T	-	0.02	0.03		
BELTSVILLE	4.34	-	0.59	-	0.11	0.53	0.44	-	-	-	-	0.58	-	-	0.46	0.23	-	-	-	-	-	-	-	-	-	-	-	0.75	-	-	-	-		
DALECARLIA RSVR	A 4.40	-	0.49	0.30	0.10	0.05	0.44	-	-	-	-	0.60	-	-	0.41	0.32	-	-	-	*	0.35 _a	0.33	-	-	-	-	0.94	0.05	-	0.02	-	-		
LAUREL 3 W	4.62	0.70	-	0.04	0.57	0.61	-	-	-	-	0.63	0.05	-	-	0.83	-	-	-	-	-	-	-	-	-	0.05	0.36	0.60	-	-	-	-	0.08		
MARYLAND SCIENCE CENTER	4.44	0.58	-	0.13	0.46	0.55	-	-	-	-	0.44	0.01	-	0.03	0.76	-	-	-	-	-	-	-	-	-	0.01	0.41	0.52	-	-	0.01	0.01			
NATL ARBORETUM DC	M 4.18	-	0.61	-	0.16	0.61	0.58	-	-	-	-	0.50	T	-	0.33	0.29	-	-	-	-	-	-	-	-	-	0.27	0.24	-	-	-	T	-		
OXON HILL	4.35	T	0.47	-	0.07	0.50	0.85	-	-	-	-	0.35	0.01	-	0.37	0.26	-	-	-	-	-	-	-	-	-	0.01	0.92	0.09	-	0.02	-	-		
UPPER MARLBORO 3 NNW	4.30	-	0.52	-	0.13	0.49	0.58	-	-	-	-	0.33	0.03	-	0.42	0.27	-	-	-	-	-	-	-	-	-	0.01	0.83	0.08	-	0.04	T	-		
NORTHERN CENTRAL 06																																		
ABERDEEN PHILLIPS FLD	A 5.19	-	0.64	-	0.37	*	1.15 _a	-	-	-	-	0.57	-	-	*	*	1.21 _a	T	-	-	-	-	-	-	-	0.01	0.84	T	T	T	-	-		
BRIGHTON DAM	6.77	T	0.68	-	1.38	0.70	0.60	-	-	-	-	0.65	-	-	0.70	0.25	-	-	-	-	-	-	-	-	-	0.23	0.25	-	-	0.25	-	-		
CONOWINGO DAM	5.03	0.40	-	0.20	1.15	0.35	-	-	-	-	0.72	-	-	0.40	0.44	-	-	-	-	-	-	-	-	-	-	-	0.90	-	-	-	-	0.17		
CYLBURN	A 5.40	*	0.59 _a	-	0.21	0.79	0.63	-	-	-	-	0.47	-	-	0.57	0.38	-	-	-	-	-	-	-	-	-	-	0.02	1.06	T	-	-	-		
DAMASCUS 3 SSW	5.46	0.51	-	0.05	0.48	1.23	-	-	-	-	0.57	0.02	-	-	0.91	-	-	-	-	-	-	-	-	-	0.02	0.52	0.51	T	-	0.02	0.07			
EMMITSBURG 2 SE	3.84	T	0.25	-	0.05	0.51	1.00	-	-	-	-	0.45	-	-	0.50	0.15	-	-	-	-	-	-	-	-	-	T	0.38	0.19	-	-	T	-		
FREDERICK 2 NNE	M	-	-	-	-	-	-	-	-	-	-	-	-	-	-	-	-	-	-	-	-	-	-	-	-	-	-	-	-	-	-	-		
MILLERS 4 NE	5.06	0.43	0.03	0.14	0.34	1.57	0.01	-	-	-	-	0.23	0.34	-	0.93	0.01	-	-	-	-	-	-	-	-	-	0.48	T	-	-	-	-	-		
SMITHSBURG 2NW	M 2.90	-	-	-	1.10	-	-	-	-	-	-	0.46	-	-	-	-	-	-	-	-	-	-	-	-	-	0.51	0.18	-	-	-	-	0.04		
APPALACHIAN																																		
MOUNTAIN 07																																		
CUMBERLAND 2	2.42	T	0.12	-	0.35	0.20	0.08	-	-	-	-	0.54	-	-	0.31	0.08	-	-	-	-	-	-	-	-	-	T	T	0.01	0.02	T	-	0.02		
FROSTBURG 2	3.59	0.02	0.29	-	0.78	0.33	0.08	-	-	-	-	0.62	-	-	0.45	0.20	-	-	-	-	-	-	-	-	0.05	T	-	0.02	T	-	0.04	-		
SHARPSBURG 5 S	3.78	T	0.32	-	0.02	1.09	0.69	-	-	-	-	0.47	-	-	0.33	0.17	-	-	-	-	-	-	-	-	-	-	0.05	0.10	-	-	-	-		
WILLIAMSPORT	MA 2.75	-	*	*	0.03 _a	0.58	0.46	-	-	-	-	0.33	-	-	0.38	0.22	-	-	-	-	-	-	-	-	-	-	0.01	0.11	-	-	-	-	-	
ALLEGHENY PLATEAU 08																																		
OAKLAND 1 SE	6.83	0.30	1.07	-	0.95	1.00	-	0.20	-	-	-	1.20	-	-	0.64	0.48	-	-	-	-	-	-	-	-	-	-	-	0.07	-	-	0.07	0.10	0.20	
SAVAGE RIVER DAM	M 3.42	-	-	-	0.61	0.52	0.05	-	-	-	-	0.79	-	-	0.38	0.34	-	-	-	-	-	-	-	-	-	-	T	-	-	-	-	0.06	-	

DAILY PRECIPITATION (INCHES)

STATION	TOTAL	DAY OF MONTH																																
		01	02	03	04	05	06	07	08	09	10	11	12	13	14	15	16	17	18	19	20	21	22	23	24	25	26	27	28	29	30	31		
SINES DEEP CREEK	MA 7.39	*	1.00 _a		1.35	1.20	0.15	-	*	0.00 _a		1.05			*	*	1.55 _a					0.33	*	*	0.00 _a	0.40		0.03	0.18	*	*	0.15 _a		
DELAWARE NORTHERN 01																																		
WILMINGTON NEW CASTLE CO AP	5.39	0.54		0.47	0.52	0.80					0.60	T		0.19	1.12		T					0.45					0.01	0.27	0.29	T		T	0.13	
WILMINGTON PORTER RES	4.45	0.15		0.29	0.60	0.16					0.73	T		T	1.35		T					0.44					0.03	0.23	0.41	T			0.06	
SOUTHERN 02																																		
DOVER	4.50	0.90		0.11	0.32	0.81					0.03	0.38			0.87							0.46	0.20				0.01	0.22	0.15			0.04		

DAILY TEMPERATURES (°F)

STATION	OB. TIME	MAX/MIN	DAY OF MONTH																															AVERAGE			
			01	02	03	04	05	06	07	08	09	10	11	12	13	14	15	16	17	18	19	20	21	22	23	24	25	26	27	28	29	30	31				
MARYLAND SOUTHERN EASTERN SHORE 01 ASSATEAGUE	VA	MAX MIN																																			M M M
PRINCESS ANNE	17	MAX MIN		47 31		47 31					65 33	65 37	66 50	63 33										49 32	47 31	59 44							60 31	70 55	M M M		
SALISBURY 2N	17	MAX MIN	39 16	46 35	42 25	53 35	52 28	29 13	46 10	57 35	61 38	62 53	63 35	59 29	60 43	58 41	60 33	71 44	68 30	49 27	49 27	57 34	57 38	54 32	46 26	58 50	69 38	68 34	41 25	43 25	43 25	60 67	70 54.7	M M M			
SALISBURY FAA AP	24	MAX MIN	35 16	46 30	39 28	53 39	50 24	31 14	46 11	60 34	65 33	65 37	66 50	57 34	55 28	63 45	56 42	62 37	72 43	49 30	52 28	44 37	59 39	56 32	49 30	47 26	59 50	66 37	59 29	40 24	43 32	60 31	66 31	53.9 32.5	M M M		
SNOW HILL 4 N	17	MAX MIN	33 18	43 32	43 25	51 25	51 32	32 14	45 7	60 34	62 30	63 34	64 50	62 39	54 24	59 42	61 44	71 33	69 28	50 25	46 34	58 34	59 38	54 33	45 27	58 24	69 45	65 41	41 35	45 22	61 27	67 32	54.9 31.3	M M M			
CENTRAL EASTERN SHORE 02 ROYAL OAK 2 SSW	17	MAX MIN	31 16	42 30	38 25	47 29	44 23	25 14	42 10	55 21	59 32	53 32	58 44	55 33	52 28	54 40	54 38	68 31	56 42	49 26	47 32	57 33	55 38	44 31	44 32	55 26	68 36	62 39	40 30	44 27	62 34	67 37	51.2 30.3	M M M			
LOWER SOUTHERN 03 MECHANICSVILLE 5 NE	07	MAX MIN	31 15	32 22	44 28	38 28	49 36	36 10	27 8	47 10	58 31	58 31	51 32	61 34	58 27	52 27	54 38	63 29	71 30	50 28	48 28	36 29	60 29	55 34	45 32	43 26	51 26	75 40	43 31	40 23	47 23	64 35	49.8 27.4	M M M			
SOLOMONS	08	MAX MIN		42 18	45 31	43 29	50 31	32 15			58 17	57 35	58 38	57 38	52 31		55 34	64 40	67 34	48 34	46 35			54 34	44 36	43 34	64 40	66 38		44 27	62 39	70 38	53.1 32.4	M M M			
UPPER SOUTHERN 04 BALTIMORE WASH INTL AP	24	MAX MIN	32 16	40 26	36 23	45 36	40 19	28 10	45 6	53 28	61 30	49 30	63 43	56 33	48 28	54 40	53 38	62 28	70 36	48 28	51 27	39 30	59 33	52 30	47 30	41 27	48 40	50 39	39 27	46 21	61 37	68 38	50.3 29.1	M M M			
BELTSVILLE	08	MAX MIN	33 16	34 24	40 22	39 28	45 33	33 10	29 7	46 14	54 29	62 31	51 41	62 42	55 28	52 37	55 39	65 29	68 38	48 28	52 32	35 32	60 35	52 31	46 32	44 26	54 34	74 40	49 29	34 24	45 28	60 33	49.3 29.1	M M M			
DALECARLIA RSVR	08	MAX MIN	32 16	32 26	39 26	39 29	46 31	31 9	28 9	48 19	50 26	61 30	61 30	62 35	56 29	56 29	55 29	56 29	56 29	56 29	56 29	52 33	36 34	61 32	53 32	48 28	45 34	53 40	74 28	49 24	34 26	45 26	62 35	49.2 27.8	M M M		
LAUREL 3 W	24	MAX MIN	34 18	42 30	33 24	44 28	40 19	28 8	45 14	54 35	57 34	60 36	60 44	56 41	54 32	53 40	63 42	69 33	48 41	50 30	42 30	59 31	54 38	49 27	45 28	48 44	73 38	54 26	38 22	44 35	60 42	67 31.3	50.9 31.3	M M M			
MARYLAND SCIENCE CENTER	24	MAX MIN			34 34	45 22	43 14	28 16	46 33	53 36	60 39	64 49	54 43	48 36	54 40	51 41	56 36	69 38	47 34	50 35	40 33	60 35	51 41	47 30	42 35	47 33	70 43	50 41	48 30	61 26	68 38	50.9 34.5	M M M				
NATL ARBORETUM DC	07	MAX MIN	33 19	42 27	48 25	44 30	50 35	35 12	30 14	49 24	57 31	64 34	51 38	63 37	59 30	54 40	60 32	57 34	67 32	71 31	51 34	52 33	38 33			50 34	47 28	53 33	76 42	51 30	36 25	67 28	64 40	51.7 30.8	M M M		
OXON HILL	08	MAX MIN	33 18	34 25	46 27	43 28	50 39	33 11	33 11	49 13	57 32	63 36	50 38	63 40	59 31	53 31	58 40	57 32	66 33	70 33	50 33	52 34	38 34	62 34	55 33	50 33	45 28	52 31	76 42	53 29	37 24	47 25	63 39	51.7 30.2	M M M		
UPPER MARLBORO 3 NNW	08	MAX MIN	35 14	32 23	42 23	40 24	48 35	32 9	47 5	57 6	64 31	50 30	63 33	55 39	52 26	56 26	55 39	65 29	71 30	49 27	51 28	35 29	60 30	53 32	49 31	44 23	52 26	75 38	48 28	37 22	47 30	62 39	50.4 26.9	M M M			
NORTHERN CENTRAL 06 ABERDEEN PHILLIPS FLD	07	MAX MIN	30 17	31 20	40 25	34 27	41 33	27 11	41 5	51 6	60 30	52 32	63 32	52 42	49 29	49 39	48 31	56 31	71 31	47 27	48 32	36 31	53 31	49 28	45 29	40 24	45 25	72 39	49 31	35 25	45 26	61 37	46.9 27.6	M M M			

DAILY TEMPERATURES (°F)

STATION	OB. TIME	MAX/MIN	DAY OF MONTH																															AVERAGE	
			01	02	03	04	05	06	07	08	09	10	11	12	13	14	15	16	17	18	19	20	21	22	23	24	25	26	27	28	29	30	31		
BRIGHTON DAM	08	MAX	27	31	41	41	42	30	23	44	51	55	55	57	51	49	51	50	61	66	45	48	34	57	50	43	40	56	71	47	34	43	59	46.8	
		MIN	12	22	21	21	30	2	7		27	27	28	36	26	28	28	28	33	29	26	29	31	32	29	30	23	30	40	27	20	28	29	26.0	
CONOWINGO DAM	07	MAX	31	37	33	39	32	25	40	50	54	49	54	47	47	45	45	52	62	43	45	54	37	47	41	33	41	66	46	35	45	56	60	44.9	
		MIN	18	23	24	31	9	4	5	23	29	29	37	27	26	36	30	30	25	24	26	31	31	29	27	24	24	37	34	23	24	33	31	25.9	
CYLBURN	08	MAX	30	34	39	38	43	31	27	45	51	57	48	60	53	47	53	49	58	67	47	50	33	57	49	44	41	45	71	48	34	45	60	46.9	
		MIN	14	23	24	27	31	9	11	19	33	32	34	41	29	34	40	30	36	30	28	29	32	32	27	29	25	25	38	30	22	26	37	28.3	
DAMASCUS 3 SSW	22	MAX	29	38	32	42	39	22	43	50	55	47	57	51	48	52	49	62	63	44	48	38	57	49	43	40	48	71	52	39	42	58	64	47.5	
		MIN	16	27	21	32	18	3	11	36	35	36	42	36	30	39	39	32	36	28	32	31	30	36	27	31	27	42	39	24	20	33	36	29.8	
EMMITSBURG 2 SE	07	MAX	28	30	39	35	45	36	23	42	53	57	45	61	53	48	49	49	63	64	49	49	36	59	52	43	41	47	73	49	37	47	59	47.1	
		MIN	7	7	20	20	32	0	-2	3	30	28	28	39	27	27	28	29	28	29	27	25	30	30	26	26	23	23	32	28	21	21	37	23.5	
FREDERICK 2 NNE	07	MAX																																	M
		MIN																																	M
MILLERS 4 NE	18	MAX	30	38	32	48	40	22	44	50	56	52	57	56	49	49	49	62	63	47	47	43	53	53	46	41	42	70	68	44	44	57	60	48.8	
		MIN	14	29	21	27	19	2	7	32	31	35	38	37	27	35	39	27	44	27	27	31	27	34	22	29	23	35	37	25	19	33	36	28.0	
SMITHSBURG 2NW	08	MAX	28	37	33	44	39																												
		MIN	23	23	20	24	23																												
APPALACHIAN MOUNTAIN 07 CUMBERLAND 2	18	MAX	35	40	41	39	56	27	32	56	57	65	46	68	62	58	59	54	74	64	50	55	37	62	52	50	47	62	77	46	33	53	60	52.2	
		MIN	9	24	24	25	27	5	6	18	31	31	33	37	30	31	41	36	36	29	29	30	33	34	25	25	30	31	39	19	19	20	41	27.4	
FROSTBURG 2	07	MAX	28	37	30	46	46	19	26	45	44	53	49	57	52	49	54	45	66	55	41	49	36	52	45	44	39	57	71	37	25	46	52	45.0	
		MIN	-1	18	15	19	19	-3	1	21	30	31	36	32	31	31	34	33	36	21	21	29	29	28	18	17	26	28	32	11	11	13	37	22.7	
SHARPSBURG 5 S	07	MAX	30	30	30	38	46	29	25	48	54	59	44	62	55	50	55	50	68	63	48	51	35	62	52	44	44	51	76	48	33	47	59	47.9	
		MIN	6	21	20	25	29	-4	-4	2	27	26	29	28	27	35	37	27	29	27	25	27	31	32	24	24	26	33	34	24	15	15	31	23.5	
WILLIAMSPORT	06	MAX																																	M
		MIN																																	
ALLEGHENY PLATEAU 08 OAKLAND 1 SE	07	MAX	26	38	36	56	53	32	24	44	47	57	42	61	57	53	58	48	67	54	45	44	48	40	49	53	48	67	35	38	27	48	53	46.7	
		MIN	-4	19	22	22	22	6	-8	-4	34	34	34	28	37	37	39	36	45	22	34	33	31	31	18	24	25	30	5	14	12	21	36	23.7	
SAVAGE RIVER DAM	08	MAX	28	39	39	45	45	24	26	46	47	54	41	60	55	52	52	52	67	57	42	47	40	54	47		41	58	70	39	26	44	52	46.3	
		MIN	2	18	18	23	24	0	0	25	29	29	31	29	28	27	38	31	33	26	26	29	32	34	23		28	30	36	17	16	16	36	24.5	
SINES DEEP CREEK	07	MAX		37	30	48	41	21																											
		MIN		-4	14	19	19	-5																											
DELAWARE NORTHERN 01 WILMINGTON NEW CASTLE CO AP	24	MAX	32	38	34	43	39	26	40	49	56	55	61	52	44	51	48	55	69	45	46	37	53	48	43	41	44	71	49	40	45	59	58	47.5	
		MIN	17	27	23	33	18	5	5	26	30	31	43	31	29	37	34	31	35	29	24	32	31	32	24	28	24	38	38	26	22	36	35	28.2	
WILMINGTON PORTER RES	24	MAX	30	37	33	44	44	22	39	48	53	55	58	48	48																				
		MIN	18	27	27	33	18	9	13	28	33	37	37	38	29																				
SOUTHERN 02 DOVER	16	MAX	30	42	40	47	44	29	41	52	60	58	61	59	53	55	52	54	69	66	46	46	56	51	44	44	46	67	68	44	45	58	64	51.3	

MARYLAND AND DELAWARE
201503

DAILY TEMPERATURES (°F)

STATION	OB. TIME	MAX/MIN	DAY OF MONTH																															AVERAGE
			01	02	03	04	05	06	07	08	09	10	11	12	13	14	15	16	17	18	19	20	21	22	23	24	25	26	27	28	29	30	31	
		MIN	16	30	24	30	24	10	10	37	33	30	45	39	27	39	40	33	40	29	25	32	32	40	28	32	23	40	38	33	23	36	38	30.8

SNOWFALL AND SNOW ON GROUND (INCHES)

STATION	DAY OF MONTH																																					
	01	02	03	04	05	06	07	08	09	10	11	12	13	14	15	16	17	18	19	20	21	22	23	24	25	26	27	28	29	30	31							
MARYLAND SOUTHERN EASTERN SHORE 01																																						
ASSATEAGUE	SNOWFALL																																					
PRINCESS ANNE	SNOWFALL					2.6	2.6																															
SALISBURY 2N	SNOWFALL	-	-	-	-	2.6	2.6																															
	SN ON GND	-	-	-	-	3	5																															
SALISBURY FAA AP	SNOWFALL	T				5.2																																
	SN ON GND																																					
SNOW HILL 4 N	SNOWFALL	-	-	-	-	T																																
	SN ON GND	T	T	T	-	T																																
CENTRAL EASTERN SHORE 02																																						
ROYAL OAK 2 SSW	SNOWFALL	T	T			6.0															0.5																	
	SN ON GND	1	1	1	T	6	5	3	T																													
LOWER SOUTHERN 03																																						
MECHANICSVILLE 5 NE	SNOWFALL		0.2			5.5																																
	SN ON GND	1	1	1	T	T	5	5	2	1	T	T																										
SOLOMONS	SNOWFALL	-	-	-	-	0.4																			T													
	SN ON GND	-	-	-	-	3																			T													
UPPER SOUTHERN 04																																						
BALTIMORE WASH INTL AP	SNOWFALL	0.3		T		6.2															1.2																	
	SN ON GND	1	1	T	T	T	5	4													T	T																
BELTSVILLE	SNOWFALL		0.5			0.1	6.0														0.5	1.5																
	SN ON GND	5	5	4	3	1	7	5	2												1	1																
DALECARLIA RSVR	SNOWFALL					5.0																																
	SN ON GND																																					
	WTR EQUIV																																					
LAUREL 3 W	SNOWFALL	0.6																			2.6																	
MARYLAND SCIENCE CENTER	SNOWFALL																																					
NATL ARBORETUM DC	SNOWFALL	-	0.2			T	5.3														0.5																	
	SN ON GND	-	1	T	T	T	5	4		T	T	T									1																	
	WTR EQUIV	-	-	-	-	-	-	-	-	-	-	-	-	-	-	-	-	-	-	-	-	-	-	-	-	-	-	-	-	-	-	-	-	-	-	-	-	
OXON HILL	SNOWFALL	T	0.1			T	5.8														0.1	0.2																
	SN ON GND	2	1	T	T		6	5	2	T											T																	
UPPER MARLBORO 3 NNW	SNOWFALL	-	0.2				5.1																															
	SN ON GND	1	1	T	T	T	5	5	3	T																												
NORTHERN CENTRAL 06																																						
ABERDEEN PHILLIPS FLD	SNOWFALL	-	1.0		0.1		6.7														T	1.0																
	SN ON GND	1	2	1	1	T	6	4	2	T											T	T																
BRIGHTON DAM	SNOWFALL					1.0	8.0														1.0	0.5																
	SN ON GND					1	8														1																	

Snowfall: Includes snow and ice. Values for NWS stations (J index note) are Mid-Mid (LST).

Snow on ground: Includes snow, sleet, ice, and hail. Values for NWS stations (J index note) are observed at 12 UTC (GMT).

Water Equivalent: Given for NWS stations (J index note) only, when snow depth is 2 inches or more, and is measured at 18 UTC (GMT)

SNOWFALL AND SNOW ON GROUND (INCHES)

STATION		DAY OF MONTH																														
		01	02	03	04	05	06	07	08	09	10	11	12	13	14	15	16	17	18	19	20	21	22	23	24	25	26	27	28	29	30	31
CONOWINGO DAM	WTR EQUIV	-	-	2.0	-	0.7	0.6	-	-	-	-	-	-	-	-	-	-	-	-	-	1.0	0.5	-	-	-	-	-	-	-	-	-	-
	SNOWFALL	-	-	-	-	4.5	-	-	-	-	-	-	-	-	-	-	-	-	-	-	-	-	-	-	-	-	-	-	-	-	-	-
CYLBURN	SNOWFALL	-	-	-	-	0.5	7.5	-	-	-	-	-	-	-	-	-	-	-	-	-	0.6	-	-	-	-	-	-	-	-	-	-	-
	SN ON GND	-	-	4	3	3	11	8	-	-	3	1	-	-	-	-	-	-	-	-	1	1	-	-	-	-	-	-	-	-	-	-
DAMASCUS 3 SSW	SNOWFALL	0.5	-	T	-	8.5	-	-	-	-	-	-	-	-	-	-	-	-	-	2.7	-	-	-	-	-	-	-	-	T	-	0.1	
	SN ON GND	7	6	6	4	13	12	9	7	5	2	1	T	T	T	T	-	-	-	2	T	-	-	-	-	-	-	-	-	-	-	
EMMITSBURG 2 SE	SNOWFALL	-	2.0	-	-	T	9.0	-	-	-	-	-	-	-	-	-	-	-	-	T	4.0	-	-	-	-	-	-	-	-	-	-	
	SN ON GND	-	2	-	-	-	9	8	1	3 ¹	2	-	-	-	-	-	-	-	-	-	-	4	-	-	-	-	-	-	-	-	-	
FREDERICK 2 NNE	WTR EQUIV	-	2.0	-	-	-	9.0	8.0	-	-	-	-	-	-	-	-	-	-	-	-	-	-	-	-	-	-	-	-	-	-	-	
	SNOWFALL	-	-	-	-	-	-	-	-	-	-	-	-	-	-	-	-	-	-	-	-	-	-	-	-	-	-	-	-	-	-	
MILLERS 4 NE	SNOWFALL	0.5	-	T	-	11.2	0.2	-	-	-	-	-	-	T	-	-	-	-	-	3.3	-	-	-	T	-	-	-	2.0	-	T	-	
	SN ON GND	3	2	2	1	12	10	7	4	2	1	T	T	-	-	-	-	-	-	3	T	-	-	-	-	-	-	-	-	-	-	
SMITHSBURG 2NW	WTR EQUIV	0.9	0.9	0.9	0.4	1.3	1.2	1.2	1.0	0.8	0.4	-	-	-	-	-	-	-	-	0.5	-	-	-	-	-	-	-	-	-	-	-	
	SNOWFALL	-	-	-	-	-	-	-	-	-	-	-	-	-	-	-	-	-	-	T	-	-	-	-	-	-	-	-	-	-	-	-
APPALACHIAN MOUNTAIN 07	SN ON GND	-	-	-	-	-	-	-	-	-	-	-	-	-	-	-	-	-	-	1	T	-	-	-	-	-	-	-	-	-	-	
	SNOWFALL	-	-	-	-	-	-	-	-	-	-	-	-	-	-	-	-	-	-	-	-	-	-	-	-	-	-	-	-	-	-	-
CUMBERLAND 2	SNOWFALL	T	0.5	-	-	T	1.7	-	-	-	-	-	-	-	-	-	-	-	-	1.0	2.0	-	-	T	-	-	-	-	-	-	-	
	SN ON GND	-	-	-	-	T	2	-	-	-	-	-	-	-	-	-	-	-	-	1	1	-	-	-	-	-	-	-	-	-	-	-
FROSTBURG 2	SNOWFALL	0.6	0.3	-	-	1.5	1.4	-	-	-	-	-	-	-	-	-	-	-	-	3.6	1.3	-	0.8	-	-	-	-	0.6	-	-	-	
	SN ON GND	8	7	7	6	5	6	6	3	2	T	T	-	-	-	-	-	-	-	4	5	-	1	-	-	-	-	1	-	-	-	
SHARPSBURG 5 S	WTR EQUIV	-	-	1.4	-	-	1.0	-	-	-	-	-	-	-	-	-	-	-	-	0.4	-	-	-	-	-	-	-	-	-	-	-	
	SNOWFALL	T	0.9	-	-	1.0	8.0	-	-	-	-	-	-	-	-	-	-	-	-	1.0	0.2	-	-	-	-	-	-	-	-	-	-	
WILLIAMSPORT	SN ON GND	1	1	T	T	1	8	7	3	1	T	T	-	-	-	-	-	-	1	T	-	-	-	-	-	-	-	-	-	-	-	
	SNOWFALL	-	-	-	-	0.3	7.3	-	-	-	-	-	-	-	-	-	-	-	-	0.9	1.1	-	-	-	-	-	-	-	-	-	-	-
ALLEGHENY PLATEAU 08	SN ON GND	-	-	-	-	-	7	-	-	-	-	-	-	-	-	-	-	-	1	2	-	-	-	-	-	-	-	-	-	-	-	
	WTR EQUIV	-	-	-	-	0.6	0.5	-	-	-	-	-	-	-	-	-	-	-	-	0.2	0.4	-	-	-	-	-	-	-	-	-	-	-
OAKLAND 1 SE	SNOWFALL	1.5 ¹	1.3	-	-	-	-	4.0	-	-	-	-	-	-	-	-	-	-	-	-	-	-	-	-	-	-	-	-	-	-	-	
	SN ON GND	9 ¹	7	6	4	3	3	7	4	-	-	-	-	-	-	-	-	-	-	-	-	-	-	-	-	-	-	-	-	-	-	
SAVAGE RIVER DAM	SNOWFALL	-	-	-	-	-	2.0	-	-	-	-	-	-	-	-	-	-	-	-	1.0	T	-	-	-	-	-	-	-	-	-	-	
	SN ON GND	3	-	3	2	1	2	2	1	-	-	-	-	-	-	-	-	-	-	1	1	-	-	-	-	-	-	-	-	-	-	-
SINES DEEP CREEK	SNOWFALL	-	4.0	-	-	5.0	4.0	-	-	-	-	-	-	-	-	-	-	-	-	0.2	-	-	-	1.5	-	-	-	-	-	-	-	
	SN ON GND	-	10	8	4	7	13	-	-	2	-	1	-	-	-	-	-	-	-	-	-	-	-	1	-	-	-	-	-	-	-	
DELAWARE NORTHERN 01	SNOWFALL	-	-	-	-	-	-	-	-	-	-	-	-	-	-	-	-	-	-	-	-	-	-	-	-	-	-	-	-	-	-	
	SN ON GND	0.3	-	T	-	7.0	-	-	-	-	-	-	-	-	-	-	-	-	-	1.3	-	-	-	-	-	-	-	-	T	-	T	
WILMINGTON NEW CASTLE CO AP	SN ON GND	2	2	2	1	T	6	6	5	T	-	-	-	-	-	-	-	-	-	-	1	-	-	-	-	-	-	-	-	-	-	
	WTR EQUIV	0.5	0.8	0.5	-	-	0.7	0.6	0.6	-	-	-	-	-	-	-	-	-	-	-	-	-	-	-	-	-	-	-	-	-	-	-
WILMINGTON PORTER RES	SNOWFALL	-	-	-	-	8.0	-	-	-	-	-	-	-	-	-	-	-	-	-	2.8	-	-	-	-	-	-	-	-	-	-	-	

Snowfall: Includes snow and ice. Values for NWS stations (J index note) are Mid-Mid (LST).

Snow on ground: Includes snow, sleet, ice, and hail. Values for NWS stations (J index note) are observed at 12 UTC (GMT).

Water Equivalent: Given for NWS stations (J index note) only, when snow depth is 2 inches or more, and is measured at 18 UTC (GMT)

SNOWFALL AND SNOW ON GROUND (INCHES)

STATION		DAY OF MONTH																															
		01	02	03	04	05	06	07	08	09	10	11	12	13	14	15	16	17	18	19	20	21	22	23	24	25	26	27	28	29	30	31	
SOUTHERN 02 DOVER	SN ON GND					8	-	-																									
	SNOWFALL	0.5				6.0																											
	SN ON GND	T				6	5	4	1													T											

Snowfall: Includes snow and ice. Values for NWS stations (J index note) are Mid-Mid (LST).

Snow on ground: Includes snow, sleet, ice, and hail. Values for NWS stations (J index note) are observed at 12 UTC (GMT).

Water Equivalent: Given for NWS stations (J index note) only, when snow depth is 2 inches or more, and is measured at 18 UTC (GMT)

PAN EVAPORATION AND WIND

STATION		DAY OF MONTH																															TOTAL OR AVERAGE		
		01	02	03	04	05	06	07	08	09	10	11	12	13	14	15	16	17	18	19	20	21	22	23	24	25	26	27	28	29	30	31			
MARYLAND UPPER SOUTHERN 04 BELTSVILLE	WIND	-	-	-	-	-	-	-	-	-	-	-	-	-	-	-	-	-	-	-	-	-	-	-	-	-	-	-	-	-	-	-	-	M	
	EVAP	-	-	-	-	-	-	-	-	-	-	-	-	-	-	-	-	-	-	-	-	-	-	-	-	-	-	-	-	-	-	-	-	M	
	MAX	-	-	-	-	-	-	-	-	-	-	-	-	-	-	-	-	-	-	-	-	-	-	-	-	-	-	-	-	-	-	-	-	M	
	MIN	-	-	-	-	-	-	-	-	-	-	-	-	-	-	-	-	-	-	-	-	-	-	-	-	-	-	-	-	-	-	-	-	-	M
UPPER MARLBORO 3 NNW	WIND	-	-	-	-	-	-	-	-	-	-	-	-	-	-	-	-	-	-	-	-	-	-	-	-	-	-	-	-	-	-	-	-	M	
	EVAP	-	-	-	-	-	-	-	-	-	-	-	-	-	-	-	-	-	-	-	-	-	-	-	-	-	-	-	-	-	-	-	-	M	
	MAX	-	-	-	-	-	-	-	-	-	-	-	-	-	-	-	-	-	-	-	-	-	-	-	-	-	-	-	-	-	-	-	-	M	
	MIN	-	-	-	-	-	-	-	-	-	-	-	-	-	-	-	-	-	-	-	-	-	-	-	-	-	-	-	-	-	-	-	-	-	M
ALLEGHENY PLATEAU 08 SAVAGE RIVER DAM	WIND	-	-	-	-	-	-	-	-	-	-	-	-	-	-	-	-	-	-	-	-	-	-	-	-	-	-	-	-	-	-	-	-	M	
	EVAP	-	-	-	-	-	-	-	-	-	-	-	-	-	-	-	-	-	-	-	-	-	-	-	-	-	-	-	-	-	-	-	-	M	
	MAX	-	-	-	-	-	-	-	-	-	-	-	-	-	-	-	-	-	-	-	-	-	-	-	-	-	-	-	-	-	-	-	-	-	M
	MIN	-	-	-	-	-	-	-	-	-	-	-	-	-	-	-	-	-	-	-	-	-	-	-	-	-	-	-	-	-	-	-	-	-	M

Evaporation: Is measured in hundreths of inches.

Wind: Is measured in miles.

Max and Min: The maximum and minimum temperatures (Fahrenheit) of the water in the evaporation pan.

STATION INDEX

STATION	INDEX NO.	DIVISION	COUNTY	LATITUDE	LONGITUDE	ELEVATION (IN FEET)	OBSERVATION TIME AND TABLES			
							LOCAL STD TIME			
							TEMP	PRECIP	EVAP	SPECIAL SEE (NOTES)
MARYLAND										
ABERDEEN PHILLIPS FLD	0015	06	HARFORD	39 28	76 10W	57	07	07		CH
ASSATEAGUE	0335	01	WORCESTER	38 4	75 13W	10	VAR	VAR		H
BALTIMORE WASH INTL AP R	0465	04	ANNE ARUNDEL	39 10	76 41W	156	24	24		HJ
BELTSVILLE	0700	04	PRINCE GEORGE'S	39 2	76 56W	145	08	08	08	CH
BRIGHTON DAM	1125	06	MONTGOMERY	39 11	77 0W	330	08	08		H
CONOWINGO DAM	2060	06	HARFORD	39 39	76 11W	40	07	07		H
CUMBERLAND 2	2282	07	ALLEGANY	39 39	78 45W	730	18	18		H
CYLBURN	2308	06	BALTIMORE	39 21	76 39W	235	08	08		H
DALECARLIA RSVR	2325	04	DISTRICT OF COLUMBIA	38 56	77 7W	150	08	08		H
DAMASCUS 3 SSW	2336	06	MONTGOMERY	39 16	77 14W	700	22	22		H
EMMITSBURG 2 SE	2906	06	FREDERICK	39 41	77 17W	403	07	07		H
FREDERICK 2 NNE	3353	06	FREDERICK	39 26	77 24W	280	07	07		H
FROSTBURG 2	3415	07	ALLEGANY	39 40	78 56W	2170	07	07		H
LAUREL 3 W	5111	04	PRINCE GEORGE'S	39 5	76 54W	400	24	24		H
MARYLAND SCIENCE CENTER R	5718	04	BALTIMORE (CITY)	39 17	76 37W	20	24	24		H
MECHANICSVILLE 5 NE	5865	03	ST. MARY'S	38 28	76 42W	100	07	07		H
MILLERS 4 NE	5934	06	CARROLL	39 43	76 48W	860	18	18		CH
NATL ARBORETUM DC	6350	04	DISTRICT OF COLUMBIA	38 55	76 58W	50	07	07		H
OAKLAND 1 SE	6620	08	GARRETT	39 25	79 24W	2420	07	07		H
OXON HILL	6800	04	PRINCE GEORGE'S	38 47	76 60W	120	08	08		H
PRINCESS ANNE	7330	01	SOMERSET	38 13	75 41W	20	17	17		H
ROYAL OAK 2 SSW	7806	02	TALBOT	38 43	76 11W	10	17	17		H
SALISBURY 2N	8004	01	WICOMICO	38 24	75 36W	20	17	17		H
SALISBURY FAA AP	8005	01	WICOMICO	38 20	75 31W	48	24	24		H
SAVAGE RIVER DAM	8065	08	GARRETT	39 31	79 8W	1495	08	08	08	CH
SHARPSBURG 5 S	8207	07	WASHINGTON	39 24	77 43W	500	07	07		H
SINES DEEP CREEK	8315	08	GARRETT	39 31	79 25W	2040	07	07		H
SMITHSBURG 2NW	8371	06	WASHINGTON	39 40	77 35W	670	08	08		H
SNOW HILL 4 N	8380	01	WORCESTER	38 14	75 23W	30	17	17		H
SOLOMONS	8405	03	CALVERT	38 19	76 27W	12	08	08		H
UPPER MARLBORO 3 NNW	9070	04	PRINCE GEORGE'S	38 51	76 46W	130	08	08	08	H
WILLIAMSPORT	9570	07	WASHINGTON	39 37	77 51W	360	06	06		H
DELAWARE										
DOVER	2730	02	KENT	39 9	75 30W	30	16	16		H
MILTON 1SE	6104	02	SUSSEX	38 46	75 17W	33		07		H
WILMINGTON NEW CASTLE CO AP R	9595	01	NEW CASTLE	39 40	75 36W	79	24	24		HJ
WILMINGTON PORTER RES	9605	01	NEW CASTLE	39 46	75 32W	270	24	24		H

REFERENCE NOTES

STATION NAMES: Name of the city, town or locality. Figures and letters following the station names indicate the distance in miles and direction from the post office or town community center.

DIVISIONS: Areas within a state of similar climatological characteristics. Division averages are calculated using data from stations that record temperature and/or precipitation. Station Precipitation totals flagged with an 'F' or 'M' are excluded from the Divisional Average calculations of precipitation. Stations with monthly Temperature averages flagged with an 'F' or 'M' are included in the Divisional Average if there are no more than 9 flagged or missing daily values in the month, else they are excluded from the divisional average for temperature.

NORMALS: The average value of the meteorological element over a time period. Effective 1 January 2012, the averaging period is 1981 to 2010. The normals for National Weather Service localities have been adjusted so as to be representative for the current observation site.

MONTHLY DEGREE DAY TOTALS: One heating (cooling) degree day is accumulated for each whole degree that the daily mean temperature is below (above) 65 degrees Fahrenheit.

PRECIPITATION: Values shown in hundredths of inches are water equivalent totals, i.e., total of liquid and melted frozen precipitation. In the "Monthly Summarized Data" table the total snow and sleet values shown in tenths of inches are unmelted amounts. The max depth on ground values of snow and sleet shown in whole inches are cumulative unmelted amounts. The number of days with .10, .50, 1.00 or more refers to water equivalents.

PRECIPITATION QUALITY CONTROL: The NCEI quality control process may flag precipitation data that are spatially inconsistent, exceed climatological limits, or are inconsistent with prevailing weather patterns.

TEMPERATURE: Original temperature values are given in the "Daily Temperature" table. Summary temperature information (averages, departures, extremes, monthly degree day totals) is based on the values labeled MAX/MIN.

WIND: (As shown in the "Evaporation and Wind" table) the total wind movement in miles over the evaporation pan as determined by an anemometer recorder located 6-8 inches above the pan.

SYMBOLS AND LETTERS USED IN THE STATION INDEX TABLE

C Station is equipped with recording rain gage (R) but values in this bulletin are from a non-recording rain gage unless indicated by an R.

G Observations appear in the "Soil Temperatures" table.

H Observations appear in the "Snowfall and Snow on the Ground" table.

J Station also published as a Local Climatological Data publication.

VAR Observation time varies.

SR / SS Observation time near sunrise / Observation time near sunset, respectively.

SYMBOLS AND LETTERS USED IN THE DATA TABLES

(DAILY DATA ARE FOR THE 24 HOURS IMMEDIATELY PRECEDING OBSERVATION TIME.)

BLANK Entries in the "Monthly Summarized Data" table indicate no record.

BLANK Entries in the "Daily Precipitation" and "Snowfall and Snow on the Ground" tables indicate zero.

BLANK Entries in the "Daily Temperature" table indicate a missing record

- No record. Data not recorded or not received in time for publication.

+ Precipitation or temperature extremes occurred on one or more previous dates during the month.

* Rain gage not read. Precipitation is included in the amount following the asterisks.

Time distribution may not be known. A * preceding the monthly total indicates precipitation amount is being carried forward to next month's total, and may include amounts from the previous month(s).

a As a subscript, indicates accumulated total.

A Amount of precipitation is the total of observer's entries for the current month. It may include precipitation that occurred during the previous month. Refer to earlier bulletin to determine date of last reading. (Hawaii stations)

B Divisional Departure from normals are computed using 1981-2010 normals.

E Normalized HDD/CDD Calculation. E is appended to the HDD/CDD Calculation when 1-9 individual daily

and/or TMIN values are missing and a Normalized HDD/CDD Calculation is provided. M appears alone if 10 or more daily values are missing.

F Monthly calculation flagged value. F is appended to average and/or total values computed which exclude one or more daily data values that have been flagged by the GHCN-Daily Dataset

M Insufficient or partial data. M is appended to average and/or total values computed with 1-9 daily values missing. M appears alone if 10 or more daily values are missing, (8 or more for wind and evaporation).

N Indicates snow fall or Snowdepth totals are computed with one or more missing days.

R Amounts from recording rain gage.

T Trace. An amount too small to measure.

SEASONAL TABLES: Monthly and seasonal snowfall and heating degree days for the 12 months ending with the June data are published in the July issue of this bulletin. Cooling degree days for the calendar year are published in the "Climatological Data Annual Summary."

Information concerning the history of changes in locations, exposure, etc. of substations is kept on file at the National Centers for Environmental Information. Historical information of regular National Weather Service Offices may be obtained from the "Local Climatological Data" annual publication. The contents of this publication may be reprinted or otherwise used freely, with proper credit to the National Centers For Environmental Information. The data are also available digitally.

Effective with the January 2011 Data-Month, COOP Observer Names are no longer included in the Monthly and Annual Climatological Data Publications. This information is not published to ensure the privacy of personal information pursuant to Section 208 of the E-Government Act of 2002 (44 USC 3601).

As of the 2011 Data-Year, Station and Climate Division Maps are no longer being included in the CD Publications. NCEI's Products Branch provides updated Station Maps for various data networks via the Historical Observing Metadata Repository: <http://www.ncdc.noaa.gov/homr>.

The GHCN-Daily Quality Control Flags shown below are displayed as superscripts with the data. For more Information on Global Historical Climatology Network - Daily and flags, see: <http://www.ncdc.noaa.gov/oa/climate/ghcn-daily/> and Comprehensive Automated Quality Assurance of Daily Surface Observations. Durre, Imke, Matthew J. Menne, Byron E. Gleason, Tamara G. Houston, Russell S. Vose, 2010: J. Appl. Meteor. Climatol., 49, 16151633. doi: 10.1175/2010JAMC2375.1

Blank = Passed All checks

D = failed duplicate check

G = failed gap check

I = failed internal consistency check

K = failed streak/frequent-value check

L = failed check on length of multiday period

M = failed megaconsistency check

N = failed naught check

O = failed climatological outlier check

R = failed lagged range check

S = failed spatial consistency check

T = failed temporal consistency check

W = temperature too warm for snow

X = failed bounds check

Z = flagged as a result of an official Datzilla investigation

Beginning with the January 2013 CD Publication, monthly mean temperature calculations have changed to the National Data Stewardship Team standard. Monthly maximum and minimum temperatures are not rounded until after the monthly mean temperature is calculated. This is the most accurate outcome, but may be slightly different from the mean derived from rounded monthly maximum and minimum.

Processing Updates and Errata: The CD Publications are periodically reproduced to include the addition of late reports and reported corrections. The GHCND data version noted on the cover of the publication provides the generation date.

The climate division temperature and precipitation values in this publication are based on simple averages from the current set of NWS-Designated Open and Published COOP and First Order Sites within each division. These values differ from those found in NCEI's nClimDiv product. Beginning in February 2014, the nClimDiv product is used by NCEI's Monitoring Branch and in its monthly climate reports. For more details on nClimDiv, please go to <http://www.ncdc.noaa.gov/monitoring-references/maps/us-climate-divisions.php>.

These and other publications are available from the National Centers for Environmental Information

Hourly Precipitation Data

This publication contains hourly precipitation amounts obtained from recording rain gages located at National Weather Service, Federal Aviation Administration, and cooperative observer stations. Published data are displayed in inches and tenths or inches and hundredths at local standard time. HPD includes maximum precipitation for nine (9) time periods from 15 minutes to 24 hours, for selected stations.

Climatological Data

Monthly editions contain station daily maximum and minimum temperatures and precipitation. Some Stations provide daily snowfall, snow depth, evaporation, and soil temperature data. Each edition also contains monthly summaries for heating and cooling degree days (65 degree F base). The July issue contains a recap of monthly heating degree days and snow data for the preceding July through June.

The Annual issue contains monthly and annual averages of temperature, precipitation, temperature extremes, freeze data, soil temperatures, evaporation, and a recap of monthly cooling degree days.

Storm Data

Monthly issues contain a chronological listing, by states, of occurrences of storms and unusual weather phenomena. Reports contain information on storm paths, deaths, injuries, and property damage. An "Outstanding storms of the month" section highlights severe weather events with photographs, illustrations, and narratives. The December issue includes annual tornado, lightning, flash flood, and tropical cyclone summaries.

Monthly Climatic Data for the World

This publication contains monthly means for temperature, pressure, precipitation, vapor pressure, and sunshine for approximately 2,000 surface data collection stations worldwide and monthly mean upper air temperatures, dew point depressions, and wind velocities for approximately 500 observing sites.

Local Climatological Data

LCD publications summarize temperature, relative humidity, precipitation, cloudiness, wind speed and direction observations for several hundred cities in the U.S. and its territories. Each monthly publication also contains 3 hourly weather observations for that month and a hourly summary of precipitation. Annual LCD publications contain a summary of the past calendar year as well as historical averages and extremes.

For Information Call:

(828) 271-4800 Option 2

(828) 271-4010 (TDD)

(828) 271-4876 (Fax)

NOAA National Centers for Environmental Information
Attn: Customer Engagement Branch
151 Patton Avenue
Asheville, NC 28801-5001

Customer Services Number: (828) 271-4800, option 2
TDD : (828) 271-4010
Fax number: (828) 271-4876

NCEI now offers free online access to the *Climatological Data* publication.
Go to : www.ncdc.noaa.gov and choose Most Popular.