



# CLIMATOLOGICAL DATA

## MARYLAND AND DELAWARE

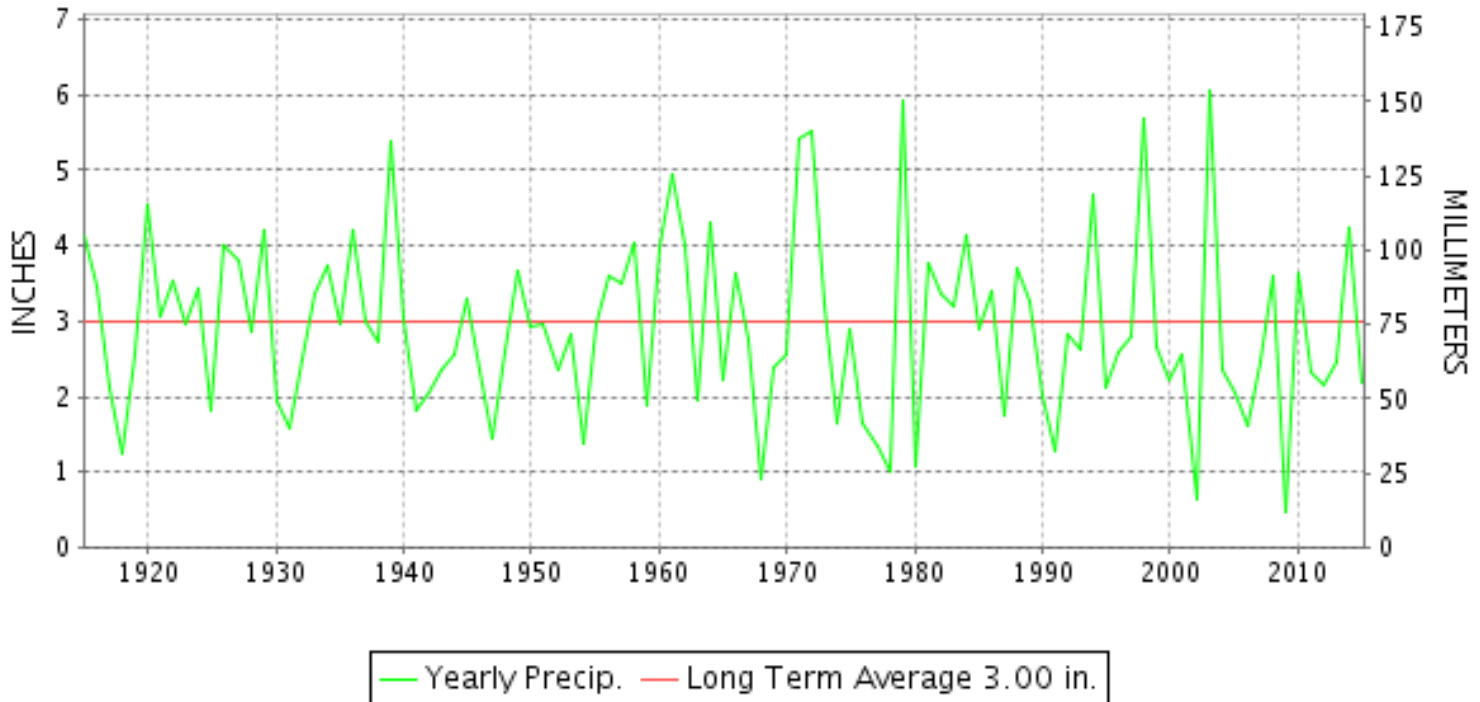
FEBRUARY 2015

VOLUME 119 NUMBER 02

ISSN 0145-0549

GHCND Ver: 3.20-upd-2015052705

### FEBRUARY PRECIPITATION BY YEAR



#### TEMPERATURE AND PRECIPITATION EXTREMES

##### MARYLAND

HIGHEST TEMPERATURE	69	FEBRUARY 09	UPPER MARLBORO 3 NNW
LOWEST TEMPERATURE	-15	FEBRUARY 25	OAKLAND 1 SE
GREATEST TOTAL PRECIPITATION	4.52		MECHANICSVILLE 5 NE
LEAST TOTAL PRECIPITATION	0.95		CUMBERLAND 2
GREATEST 1 DAY PRECIPITATION	1.40	FEBRUARY 27	MECHANICSVILLE 5 NE
GREATEST TOTAL SNOWFALL	31.7		SINES DEEP CREEK
GREATEST DEPTH OF SNOW OR ICE	15		SINES DEEP CREEK

"I certify that this is an official publication of the National Oceanic and Atmospheric Administration (NOAA) It is compiled using information from weather observing sites supervised by NOAA/National Weather Service and received at the National Centers for Environmental Information(NCEI), Asheville, North Carolina 28801."

Director  
National Centers for Environmental Information

noaa

National  
Oceanic and  
Atmospheric Administration

National  
Environmental Satellite, Data  
and Information Service

National  
Centers for Environmental Information  
Asheville, North Carolina

**DELAWARE**

HIGHEST TEMPERATURE	60
LOWEST TEMPERATURE	0
GREATEST TOTAL PRECIPITATION	2.16
LEAST TOTAL PRECIPITATION	1.92
GREATEST 1 DAY PRECIPITATION	0.91
GREATEST TOTAL SNOWFALL	10.6
GREATEST DEPTH OF SNOW OR ICE	5

FEBRUARY 08  
FEBRUARY 20++

FEBRUARY 02

DOVER  
2 STATIONS  
WILMINGTON NEW CASTLE CO AP  
DOVER  
WILMINGTON PORTER RES  
WILMINGTON NEW CASTLE CO AP  
WILMINGTON PORTER RES





DAILY PRECIPITATION (INCHES)

STATION	TOTAL	DAY OF MONTH																																	
		01	02	03	04	05	06	07	08	09	10	11	12	13	14	15	16	17	18	19	20	21	22	23	24	25	26	27	28	29	30	31			
<b>MARYLAND</b>																																			
<b>SOUTHERN</b>																																			
<b>EASTERN SHORE 01</b>																																			
ASSATEAGUE	M	-	-	-	-	-	-	-	-	-	-	-	-	-	-	-	-	-	-	-	-	-	-	-	-	-	-	-	-	-	-	-	-	-	
PRINCESS ANNE	M	-	0.67	-	-	-	-	-	-	-	-	-	-	-	-	-	-	-	-	-	-	-	-	-	-	-	-	-	-	-	-	-	-	-	
SALISBURY 2N	3.27		0.64							0.37		0.05		0.01	T		0.77						1.14				0.01	0.28							
SALISBURY FAA AP	3.16	0.12	0.49						0.02	0.30		0.01		0.07		0.28	0.36	T	T	T		0.62	0.49		T		0.40	T							
SNOW HILL 4 N	3.51		0.42							0.42		0.02			0.07		0.55		T				1.38			0.30	0.35	T							
<b>CENTRAL</b>																																			
<b>EASTERN SHORE 02</b>																																			
ROYAL OAK 2 SSW	M 1.66		0.55							0.10		T		T	0.18	-	0.55					T	0.10				0.18	T							
<b>LOWER SOUTHERN 03</b>																																			
MECHANICSVILLE 5 NE	4.52		0.08	0.34						0.17	T		T		0.01		0.75			0.02			1.01	0.04			0.70	1.40							
SOLOMONS	A* 3.01	*	0.46 <sub>a</sub>	0.15				*	*	0.00 <sub>a</sub>	0.19	0.10	T	0.04	*	0.02 <sub>a</sub>	0.76			T		*	*	1.14 <sub>a</sub>		T	0.15	T	-						
<b>UPPER SOUTHERN 04</b>																																			
BALTIMORE WASH INTL AP	2.24	0.07	0.28						0.08	0.07		T		0.21		0.19	0.18	T				0.92	0.13				0.11	T							
BELTSVILLE	1.81		0.13	0.17						0.11					0.03		0.37						0.90				0.08	0.02							
DALECARLIA RSVR	M 0.70	-	0.21							0.08													0.40				0.01								
LAUREL 3 W	1.86	0.13		0.32					0.05	0.10				0.08		0.22	0.03					0.68	0.15				0.10								
MARYLAND SCIENCE CENTER	2.12	0.09	0.28						0.07	0.11				0.10		0.19	0.15	0.01				0.94	0.11				0.07								
NATL ARBORETUM DC	M 1.73		0.11							0.17					0.04		-	0.45	T				0.85				0.11								
OXON HILL	1.89		0.07	0.01						0.23				T		0.01	0.50	T	T	0.01			0.86				0.14	0.06	T						
UPPER MARLBORO 3 NNW	1.67		0.09	0.22						0.11				T		0.01	0.41					0.69					0.08	0.06							
<b>NORTHERN CENTRAL 06</b>																																			
ABERDEEN PHILLIPS FLD	A 1.77		0.39	0.19			T			0.07					*	*	0.30 <sub>a</sub>		T				0.77				T	0.05	T						
BRIGHTON DAM	2.36		0.25	0.19						0.10					0.10		0.52						1.10				0.10								
CONOWINGO DAM	1.86	0.30	0.40											0.13		0.23						0.70						0.10							
CYLBURN	MA 1.63		*	0.38 <sub>a</sub>						-	0.09				-	-	-						1.10				0.03	0.03							
DAMASCUS 3 SSW	1.97	T	0.35						0.07	0.08		T		0.04		0.15	0.13	0.03				0.90	0.13				0.09	T							
EMMITSBURG 2 SE	2.15		0.07	0.18					T	0.11	0.02		T		1.00		0.25		0.02				0.50	T			0.50								
FREDERICK 2 NNE	M	-	-	-	-	-	-	-	-	-	-	-	-	-	-	-	-	-	-	-	-	-	-	-	-	-	-	-	-	-	-	-	-	-	-
MILLERS 4 NE	1.89	T	0.36			T				0.09	0.09		0.02		T	0.07		0.15	T	0.01	T		0.65	0.42			0.03	T							
SMITHSBURG 2NW	M	-	-	-	-	-	-	-	-	-	-	-	-	-	-	-	-	-	-	-	-	-	-	-	-	-	-	-	-	-	-	-	-	-	-
<b>APPALACHIAN</b>																																			
<b>MOUNTAIN 07</b>																																			
CUMBERLAND 2	0.95		0.27						0.01	0.13		T	T		0.05		0.19			T			0.30				T	T							
FROSTBURG 2	1.28		0.41	0.01		0.02			0.02	0.15		T	T		0.05		0.18		0.05	0.01			0.38	T				T							
SHARPSBURG 5 S	1.47		0.14						T	0.17			0.04		0.06		0.21	T	0.04				0.79				0.02	T							
WILLIAMSPORT	M 0.18		-	-	-				-	-							0.17		0.01	-			-												
<b>ALLEGHENY PLATEAU 08</b>																																			
OAKLAND 1 SE	2.61		0.04	0.18		0.09				0.14	0.10		0.05	0.19		0.10		0.51		0.19	0.07		0.83	0.10								0.02			
SAVAGE RIVER DAM	M 0.84		0.41	T		T				0.07	0.07		-	-		0.05		0.24		T	T		-												

DAILY PRECIPITATION (INCHES)

STATION	TOTAL	DAY OF MONTH																															
		01	02	03	04	05	06	07	08	09	10	11	12	13	14	15	16	17	18	19	20	21	22	23	24	25	26	27	28	29	30	31	
SINES DEEP CREEK	A* 2.74	*	0.80 <sub>a</sub>	0.20		0.05		*	*	0.10 <sub>a</sub>	0.12			0.14	*	*	0.15 <sub>a</sub>	0.20		0.11	0.09	*	*	0.75 <sub>a</sub>				0.03	-				
DELAWARE NORTHERN 01																																	
WILMINGTON NEW CASTLE CO AP	2.16	0.06	0.79			T				0.01	T			0.13	T	0.03	0.22		T			0.67	0.23				0.01	0.01					
WILMINGTON PORTER RES	2.11	T	0.91			T				T				0.10		T	0.23					0.50	0.37				T	T					
SOUTHERN 02																																	
DOVER	1.92		0.88								T				T		0.22		T				0.78				0.04						

DAILY TEMPERATURES (°F)

STATION	OB. TIME	MAX/MIN	DAY OF MONTH																															AVERAGE		
			01	02	03	04	05	06	07	08	09	10	11	12	13	14	15	16	17	18	19	20	21	22	23	24	25	26	27	28	29	30	31			
<b>MARYLAND SOUTHERN EASTERN SHORE 01</b> ASSATEAGUE	VA	MAX MIN																																		M M
PRINCESS ANNE	17	MAX MIN		58 28	55 23	51 23	48 23	44 17		44 34	40 32	42 28	39 25	36 15		24 11	28 14	36 10	31 11	27 3				37 22	33 14	43 18	40 20							M M		
SALISBURY 2N	17	MAX MIN	45 18	57 37	40 21	50 24	49 30	34 14	50 23	64 37	61 37	38 29	40 26	39 26	15 15	41 11	8 8	14 14	10 15	5 5	49 38	57 29	57 12	33 12	33 12	43 30	36 19	36 13	33 13				43.6 20.5			
SALISBURY FAA AP	24	MAX MIN	48 17	58 28	35 23	51 22	43 23	37 17	53 21	67 32	44 34	37 32	42 29	39 25	28 14	44 14	23 13	24 10	28 15	36 11	27 -3	19 -4	39 32	47 20	37 33	33 43	43 36	36 36	33 33				38.8 18.6			
SNOW HILL 4 N	17	MAX MIN	46 25	57 34	43 19	52 19	47 32	36 11	49 19	64 29	62 38	38 29	38 29	35 23	41 15	38 11	24 2	28 15	41 12	31 11	19 0	35 -4	46 33	43 30	33 10	42 14	42 28	37 12	37 8				40.8 18.5			
<b>CENTRAL EASTERN SHORE 02</b> ROYAL OAK 2 SSW	17	MAX MIN	40 18	51 27	34 21	49 20	45 28	34 13	45 20	63 30	44 31	39 28	41 28	39 26	36 14	40 14	39 11	19 8	25 13	34 5	27 12	19 4	31 1	44 30	38 26	29 12	40 18	34 28	33 20	31 17			37.3 18.7			
<b>LOWER SOUTHERN 03</b> MECHANICSVILLE 5 NE	07	MAX MIN	33 18	55 18	55 21	35 21	54 23	40 11	35 11	49 28	67 36	39 29	37 26	41 26	39 12	28 12	43 9	20 8	18 8	29 4	33 4	20 0	19 0	33 1	47 31	36 8	27 8	42 13	37 25	34 15			37.3 15.2			
SOLOMONS	08	MAX MIN		57 20	44 23	47 29	52 31	33 17		63 26	39 29	37 30	39 29	38 29	14		44 10	23 15	29 17	29 13	19 5			43 14	32 14	39 20	42 28	32 23					M M			
<b>UPPER SOUTHERN 04</b> BALTIMORE WASH INTL AP	24	MAX MIN	39 18	45 22	34 20	51 20	41 17	33 10	46 19	55 30	41 31	39 28	43 25	41 17	27 12	38 13	18 6	18 5	27 12	31 4	18 6	18 1	33 2	48 32	38 13	25 3	38 10	35 26	31 20	31 14			35.1 15.6			
BELTSVILLE	08	MAX MIN	31 18	41 25	46 21	34 21	52 28	35 11	35 15	46 27	62 32	37 29	38 26	45 27	40 12	26 13	40 7	17 6	17 7	28 4	31 6	16 3	18 1	33 11	47 31	32 3	27 7	38 18	36 28	30 14			34.9 16.1			
DALECARLIA RSVR	08	MAX MIN	40 33	47 21	35 22	54 20	31 13	36 16	38 20	64 31	38 29	37 26	37 26	39 26	26 12	43 11	18 7	16 6	27 9	29 9	17 2	18 4	33 8	49 20	32 7	28 4	32 14	32 28	37 14	31 14			34.5 15.5			
LAUREL 3 W	24	MAX MIN	39 23	44 21	34 19	51 22	49 18	33 12	45 22	58 34	43 30	37 27	44 24	38 18	27 10	38 13	17 4	15 3	28 12	31 19	29 8	19 2	31 1	47 30	37 14	27 20	37 18	36 27	31 20	30 12			35.5 17.3			
MARYLAND SCIENCE CENTER	24	MAX MIN	40 34	45 24	33 21	47 20	44 16	35 29	46 35	49 31	43 28	37 27	40 19	26 13	36 15	19 7	19 6	26 14	32 17	19 7	19 3	32 12	42 31	35 15	25 10	39 19	35 27	31 22	31 17				34.5 19.1			
NATL ARBORETUM DC	07	MAX MIN	24 20	42 30	51 22	37 24	55 32	37 13	36 18	48 28	67 35	39 30	45 27	42 30	29 13	29 17	42 8	21 7			34 12	19 4	23 6	38 18	51 33	35 8	30 14	41 19	39 29	35 17			38.8 19.8			
OXON HILL	08	MAX MIN	34 18	42 28	47 21	37 22	56 26	36 12	34 13	48 27	68 34	38 29	37 26	45 26	40 12	28 12	42 8	20 7	17 8	31 13	35 11	20 2	20 3	39 13	49 35	35 10	29 10	41 17	37 29	33 17			37.1 17.5			
UPPER MARLBORO 3 NNW	08	MAX MIN	33 17	41 22	46 21	37 21	54 27	39 10	34 10	50 23	69 30	37 28	38 24	46 24	39 12	28 12	42 7	19 6	17 6	30 1	35 0	19 2	21 1	34 12	50 6	35 6	30 15	40 26	37 14	34 14			36.9 14.8			
<b>NORTHERN CENTRAL 06</b> ABERDEEN PHILLIPS FLD	07	MAX MIN	29 15	37 21	43 19	34 20	47 25	36 11	33 11	43 24	49 33	36 28	41 27	41 27	40 12	27 12	32 6	18 3	17 3	29 3	32 3	20 1	20 1	32 9	48 32	34 1	27 2	39 20	32 26	32 15			33.9 14.6			

DAILY TEMPERATURES (°F)

STATION	OB. TIME	MAX/MIN	DAY OF MONTH																															AVERAGE				
			01	02	03	04	05	06	07	08	09	10	11	12	13	14	15	16	17	18	19	20	21	22	23	24	25	26	27	28	29	30	31					
BRIGHTON DAM	08	MAX	28	37	43	32	48	33	33	43	52	51	35	41	39	25	36	16	16	25	31	16	14	32	45	34	26	38	34	29							33.3	
		MIN	15	24	18	19	29	9	9	26	31	27	22	23	10	12	4	3	3	7	7	-3	2	14	29	-1	8	14	23	5							13.9	
CONOWINGO DAM	07	MAX	37	39	29	30	29	34	42	35	35	36	36	38	23	30	15	16	23	29	19	17	31	38	29	22	36	30	27	29							29.8	
		MIN	17	19	19	14	11	11	24	18	26	25	24	10	10	5	2	2	3	2	0	0	5	27	1	2	10	24	14	14							12.1	
CYLBURN	08	MAX	28	39	44	33	47	34	34	44	50	36	38	42	40	40	35	16	16	26	31	16	17	32	46	29	24	39	34	30							33.6	
		MIN	15	25	18	18	27	11	12	29	34	27	23	24	10	10	4	2	3	5	6	0	1	13	29	5	7	24	26	13							15.0	
DAMASCUS 3 SSW	22	MAX	37	43	30	49	43	32	42	49	36	35	40	37	22	36	14	13	24	31	16	14	29	44	34	25	37	32	27	26							32.0	
		MIN	19	20	17	24	15	8	27	32	30	26	21	17	8	13	3	2	10	11	6	-1	7	29	13	0	14	26	18	9								15.1
EMMITSBURG 2 SE	07	MAX	30	37	42	32	42	37	37	39	38	38	38	39	27	34	19	17	27	30	18	20	31	42	34	26	41	32	32								32.8	
		MIN	14	15	22	17	17	8	8	24	27	28	21	20	10	10	5	3	3	3	1	1	1	7	29	-8	-8	10	23	7								11.4
FREDERICK 2 NNE	07	MAX																																				M
		MIN																																				M
MILLERS 4 NE	18	MAX	38	42	30	46	37	35	44	46	38	35	39	37	25	33	30	14	26	30	25	17	21	47	38	26	38	34	29	30							33.2	
		MIN	16	23	15	20	19	7	20	31	29	25	19	25	7	12	2	-1	6	6	7	-2	7	21	16	-4	14	21	19	9							13.9	
SMITHSBURG 2NW	08	MAX																																				M
		MIN																																				M
<b>APPALACHIAN MOUNTAIN 07</b>																																						
CUMBERLAND 2	18	MAX	38	39	43	35	54	26	38	56	63	44	38	41	37	28	37	14	14	31	33	13	22	27	45	24	35	43	37	31							35.2	
		MIN	13	26	15	15	19	13	15	29	29	32	30	30	7	7	3	-1	0	10	6	-2	0	10	20	-1	1	25	13	8							13.3	
FROSTBURG 2	07	MAX	27	38	38	24	44	15	30	46	53	44	44	36	28	20	28	4	8	20	24	4	12	32	34	15	27	34	30	19							27.8	
		MIN	7	24	7	6	15	5	10	29	39	25	22	22	-2	-2	-6	-9	-6	3	-2	-8	-8	8	12	-6	-6	17	4	-1							7.1	
SHARPSBURG 5 S	07	MAX	32	39	44	34	48	29	40	45	47	39	38	42	38	26	36	15	13	30	31	15	18	31	48	26	27	40	33	31							33.4	
		MIN	11	24	14	17	20	6	7	26	28	28	18	18	9	8	4	1	2	1	0	-6	-6	13	26	-3	-3	10	21	6							10.7	
WILLIAMSPORT	06	MAX																																				M
		MIN																																				M
<b>ALLEGHENY PLATEAU 08</b>																																						
OAKLAND 1 SE	07	MAX	27	46	39	29	45	31	31	47	56	47	47	41	29	20	20	13	13	22	23	2	12	34	34	33	33	35	33	22							30.9	
		MIN	6	6	8	8	15	12	11	30	30	23	20	20	3	-2	-4	-10	-8	6	-3	-9	-9	12	14	8	-15	6	5	-6							6.3	
SAVAGE RIVER DAM	08	MAX	28	41	41	27	45	21	30	47	56	42	32			25	31	7	10	23	24	7	13		35	19	29	35	33	23							29.0	
		MIN	10	22	10	13	13	8	11	24	32	29	25			4	-1	-3	-2	6	3	-3	-3		18	-10	-10	22	10	2							9.2	
SINES DEEP CREEK	07	MAX		40	41	24	43	17			54	41	25	38	29				21	9	18	24	4		33	16	29	31	31								M	
		MIN		2	1	8	17	0			6	23	23	23	-3				-10	-10	4	-1	-7		-6	-13	-14	18	7								M	
<b>DELAWARE NORTHERN 01</b>																																						
WILMINGTON NEW CASTLE CO AP	24	MAX	41	41	31	48	40	32	44	53	38	43	40	41	25	32	16	16	25	30	21	18	33	43	36	23	38	33	29	31							33.6	
		MIN	19	23	19	23	16	12	17	31	29	28	25	18	10	16	7	2	13	5	6	2	3	32	13	6	11	25	20	14							15.9	
WILMINGTON PORTER RES	24	MAX	39	40	27	44	38	32	42	49	49	38	38	35	21	29	29	13	23	27			15	31	42	35	35	35	31	27	27						33.0	
		MIN	19	22	17	22	16		21	33	27	25	24	18	8	15	5	0	10				0	7	31	12	5	14	18	19	14							16.1
<b>SOUTHERN 02</b>																																						
DOVER	16	MAX	40	53	40	49	47	35	47	60	35	40	41	39	37	37	36	17	30	38	30	18	30	44	43	29	38	38	33	30							37.6	



MARYLAND AND DELAWARE  
201502

## DAILY TEMPERATURES (°F)

STATION	OB. TIME	MAX/MIN	DAY OF MONTH																															AVERAGE			
			01	02	03	04	05	06	07	08	09	10	11	12	13	14	15	16	17	18	19	20	21	22	23	24	25	26	27	28	29	30	31				
		MIN	15	36	18	20	29	12	20	33	30	27	26	26	10	13	7	2	13	5	10	0	1	29	29	10	15	26	19	14							17.7

SNOWFALL AND SNOW ON GROUND (INCHES)

STATION	DAY OF MONTH																																		
	01	02	03	04	05	06	07	08	09	10	11	12	13	14	15	16	17	18	19	20	21	22	23	24	25	26	27	28	29	30	31				
<b>MARYLAND SOUTHERN EASTERN SHORE 01</b>																																			
ASSATEAGUE	SNOWFALL																																		
PRINCESS ANNE	SNOWFALL																																		
SALISBURY 2N	SNOWFALL	-	-	-	-	-	-	-	-	-	-	-	-	-	-	6.0	-	-	-	-	-	-	-	-	-	-	3.6	-	-	-	-	-			
	SN ON GND	-	-	-	-	-	-	-	-	-	-	-	-	-	-	-	-	T	-	-	-	-	-	-	-	-	-	-	-	-	-	-			
SALISBURY FAA AP	SNOWFALL											T		0.5		3.0	3.0	T	T	T	T			T		4.0	T								
	SN ON GND																																		
SNOW HILL 4 N	SNOWFALL	-	-	-	-	-	-	-	-	-	-	T	-	-	T		8.0		T	-	-	-	-	-	-	0.5	3.8	T	-	-	-	-			
	SN ON GND	-	-	-	-	-	-	-	-	-	-	-	-	-	-	-	8	6	6	5	5	T	T	-	-	4	3	3							
<b>CENTRAL EASTERN SHORE 02</b>																																			
ROYAL OAK 2 SSW	SNOWFALL											T			2.0	T	6.0					T				2.0	T								
	SN ON GND													T	2	2	6	6	5	5	5	2	2	2	1	3	2	1							
<b>LOWER SOUTHERN 03</b>																																			
MECHANICSVILLE 5 NE	SNOWFALL		-	-									T		T		6.5		T			0.5	-			1.0	2.0								
	SN ON GND	-	-	-	-	-	-	-	-	-	-	-	-	-	-	-	6	6	5	4	4	3	2	1	1	2	1	1							
SOLOMONS	SNOWFALL	-	-	-	-	-	-	-	-	-	-	-	-	-	-	T	0.8 <sup>I</sup>		T			-	-	T	-	T	0.2 <sup>I</sup>	T	-	-	-	-	-		
	SN ON GND	-	-	-	-	-	-	-	-	-	-	-	-	-	-	T <sup>I</sup>	6 <sup>I</sup>	6	2	2	-	-	-	-	-	2 <sup>I</sup>	1	-							
<b>UPPER SOUTHERN 04</b>																																			
BALTIMORE WASH INTL AP	SNOWFALL	0.4	T							T	T					2.0	1.8	T				6.3				1.5	T								
	SN ON GND										T				1	1	3	3	1	1	1	3	1	1	1	2	2	1							
BELTSVILLE	SNOWFALL										0.1				2.0		4.0					5.0				1.5	0.5								
	SN ON GND										T				2	1	4	3	2	2	2	7	5	5	5	7	5	5							
DALECARLIA RSVR	SNOWFALL	-																					5.0			1.0									
	SN ON GND	-	-	-	-	-	-	-	-	-	-	-	-	-	-	I	3 <sup>I</sup>					-	5			1									
	WTR EQUIV	-	-	-	-	-	-	-	-	-	-	-	-	-	-	-	3.6						5.0		0.4	1.0									
LAUREL 3 W	SNOWFALL	-	-	-	-	-	-	-	-	-	-	-	-	1.2	-	2.3	-	-	-	-	-	5.5	-	-	-	1.5	-	-							
MARYLAND SCIENCE CENTER	SNOWFALL																																		
NATL ARBORETUM DC	SNOWFALL	-	-												0.3	-	-	3.6	T	-	-	2.0				2.1	-								
	SN ON GND	-	-	-	-	-	-	-	-	-	-	-	-	-	T	-	-	4	3	-	-	2	1	1	1	3	2	-							
	WTR EQUIV	-	-	-	-	-	-	-	-	-	-	-	-	-	-	-	-	-	-	-	-	-	-	-	-	-	-	-	-	-	-	-	-	-	-
OXON HILL	SNOWFALL		T								0.1						4.8	T	0.1	0.3		2.5			1.7	1.4	T								
	SN ON GND										T				0.3		5	5	5	5	4	5	2	2	2	4	3	3							
	WTR EQUIV	-	-	-	-	-	-	-	-	-	-	-	-	-	-	-	0.5	-	-	-	-	-	-	-	-	-	-	-	-	-	-	-	-	-	-
UPPER MARLBORO 3 NNW	SNOWFALL	-	-	-	-	-	-	-	-	-	-	-	-	-	0.4	-	4.1	-	-	-	-	2.2	-	-	-	1.9	1.0	-							
	SN ON GND	-	-	-	-	-	-	-	-	-	-	-	-	-	T	T	4	4	4	4	4	5	1	1	T	2	1	1							
<b>NORTHERN CENTRAL 06</b>																																			
ABERDEEN PHILLIPS FLD	SNOWFALL		0.1								0.2						3.3		T			6.5				T	1.0	T							
	SN ON GND		T								T				1	T	3	2	1	1	T	5	3	2	1	1	2	2							
BRIGHTON DAM	SNOWFALL																																		

Snowfall: Includes snow and ice. Values for NWS stations (J index note) are Mid-Mid (LST).

Snow on ground: Includes snow, sleet, ice, and hail. Values for NWS stations (J index note) are observed at 12 UTC (GMT).

Water Equivalent: Given for NWS stations (J index note) only, when snow depth is 2 inches or more, and is measured at 18 UTC (GMT)

## SNOWFALL AND SNOW ON GROUND (INCHES)

STATION	DAY OF MONTH																														
	01	02	03	04	05	06	07	08	09	10	11	12	13	14	15	16	17	18	19	20	21	22	23	24	25	26	27	28	29	30	31
CONOWINGO DAM CYLBURN	SN ON GND					-									1	5						7				2					
	WTR EQUIV														1.0	5.2						7.0				0.1					
	SNOWFALL	-	-	-	-	-	-	-	-	-	-	-	-	-	1.0	2.8	-	-	-	-	8.0	-	-	-	-	-	5.0	-			
DAMASCUS 3 SSW	SN ON GND																4	4	3	3	7	5	4	4	4	4	4	4			
	SNOWFALL	T	0.5						T	T	T			0.7	1.8	1.3	0.4			11.0					1.7	T					
	WTR EQUIV	1	T	T	T	T	T	T	T	T	T	T	T	1	T	2	3	3	2	2	12	8	8	8	7	8	7	7	1		
EMMITSBURG 2 SE	SN ON GND																														
	SNOWFALL		0.5									T			1.0	2.5		0.5			6.0	6	6	6	3		1	3 <sup>1</sup>			
	WTR EQUIV					1									1	3	3				6.0	6.0									
FREDERICK 2 NNE MILLERS 4 NE	SN ON GND																														
	SNOWFALL	T	1.1			T					0.1	T		T	1.2	2.3	T	0.2	T	5.7	1.7				0.4	0.2					
	WTR EQUIV	1	1	1	T	T	T	T	T	T	T	T	T	T	T	T	1	1	1	1	6	3	3	3	3	3	3	3	3		
SMITHSBURG 2NW APPALACHIAN MOUNTAIN 07 CUMBERLAND 2	SN ON GND																														
	SNOWFALL	-	0.2	-	-	-	-	-	-	-	-	-	-	-	1.0	-	2.6	-	T	-	-	2.6	-	-	-	T	-	-			
	WTR EQUIV	0.2	0.2	0.2													0.1	0.1	0.1	0.1	0.6	0.9	0.9	0.9	0.7	0.7	0.7	0.7			
FROSTBURG 2	SN ON GND																														
	SNOWFALL		0.6	0.3	-	0.5						0.6	0.3		2.7	2.7		1.0	0.3		3.7	T				T					
	WTR EQUIV	8	9	9	8	6	6	5	3	2	2	2	2	4	4	7	7	8	8	7	10	9	9	8	8	7	7				
SHARPSBURG 5 S	SN ON GND																														
	SNOWFALL		T										0.5		0.7	2.6	T	1.4			6.6				0.4	T					
	WTR EQUIV	T	T												T	T	2	1	1	T	T	7	2	2	2	2	2	1			
WILLIAMSPORT ALLEGHENY PLATEAU 08 OAKLAND 1 SE	SN ON GND																														
	SNOWFALL			2.4		1.0						0.5	2.5		6.0		1.3		2.1		5.0					0.5					
	WTR EQUIV	5	3	5	4	3	2	2					2	2	8	8	9	9	11	11	11	13	13	10	9	8	8		1		
SAVAGE RIVER DAM	SN ON GND																														
	SNOWFALL	-	-	T	-	T	-	-	-	-	-	-	-	-	1.0	-	2.0	-	T	T	-	-	-	-	-	-	-	-	-		
	WTR EQUIV	3	2	2	2	2	2	1	1	T					1	1	2	1	1	2	1	-	4	4	4	3	3	3			
SINES DEEP CREEK	SN ON GND																														
	SNOWFALL	-	-	1.5	-	2.0	-	-	-	-	-	-	-	3.0	-	-	4.0	3.0	-	2.2	2.3	-	-	13.0	-	-	-	0.7	-		
	WTR EQUIV	-	-	3	-	6	4	-	-	-	-	-	3	-	-	4	6	6	7	8	-	-	15	-	12	-	-	-	-		
DELAWARE NORTHERN 01 WILMINGTON NEW CASTLE CO AP	SN ON GND																														
	SNOWFALL	0.2	T			T								1.4	T	0.4	2.9	T			5.0					0.5	0.2				
	WTR EQUIV														1	1	3	2	2	2	2	4	2	2	2	2	2	2	2		
WILMINGTON PORTER RES	SN ON GND																														
	SNOWFALL	-	-	-	-	-	-	-	-	-	-	-	-	-	-	0.3	0.2	0.3	0.3	0.2	0.7	0.5	0.4	0.4	0.5	0.4	0.4				
	WTR EQUIV	T													0.1	T	5.0				4.0										
	SN ON GND													T	T	5	5	5	5	5	4	3	1	T							

Snowfall: Includes snow and ice. Values for NWS stations (J index note) are Mid-Mid (LST).

Snow on ground: Includes snow, sleet, ice, and hail. Values for NWS stations (J index note) are observed at 12 UTC (GMT).

Water Equivalent: Given for NWS stations (J index note) only, when snow depth is 2 inches or more, and is measured at 18 UTC (GMT)

## SNOWFALL AND SNOW ON GROUND (INCHES)

STATION		DAY OF MONTH																															
		01	02	03	04	05	06	07	08	09	10	11	12	13	14	15	16	17	18	19	20	21	22	23	24	25	26	27	28	29	30	31	
SOUTHERN 02 DOVER	SNOWFALL													T			4.0										1.7						
	SN ON GND																4	3	2	2	1						2	2					

Snowfall: Includes snow and ice. Values for NWS stations (J index note) are Mid-Mid (LST).

Snow on ground: Includes snow, sleet, ice, and hail. Values for NWS stations (J index note) are observed at 12 UTC (GMT).

Water Equivalent: Given for NWS stations (J index note) only, when snow depth is 2 inches or more, and is measured at 18 UTC (GMT)



STATION INDEX

STATION	INDEX NO.	DIVISION	COUNTY	LATITUDE	LONGITUDE	ELEVATION (IN FEET)	OBSERVATION TIME AND TABLES			
							LOCAL STD TIME			
							TEMP	PRECIP	EVAP	SPECIAL SEE (NOTES)
MARYLAND										
ABERDEEN PHILLIPS FLD	0015	06	HARFORD	39 28	76 10W	57	07	07		CH
ASSATEAGUE	0335	01	WORCESTER	38 4	75 13W	10	VAR	VAR		H
BALTIMORE WASH INTL AP R	0465	04	ANNE ARUNDEL	39 10	76 41W	156	24	24		HJ
BELTSVILLE	0700	04	PRINCE GEORGE'S	39 2	76 56W	145	08	08	08	CH
BRIGHTON DAM	1125	06	MONTGOMERY	39 11	77 0W	330	08	08		H
CONOWINGO DAM	2060	06	HARFORD	39 39	76 11W	40	07	07		H
CUMBERLAND 2	2282	07	ALLEGANY	39 39	78 45W	730	18	18		H
CYLBURN	2308	06	BALTIMORE	39 21	76 39W	235	08	08		H
DALECARLIA RSVR	2325	04	DISTRICT OF COLUMBIA	38 56	77 7W	150	08	08		H
DAMASCUS 3 SSW	2336	06	MONTGOMERY	39 16	77 14W	700	22	22		H
EMMITSBURG 2 SE	2906	06	FREDERICK	39 41	77 17W	403	07	07		H
FREDERICK 2 NNE	3353	06	FREDERICK	39 26	77 24W	280	07	07		H
FROSTBURG 2	3415	07	ALLEGANY	39 40	78 56W	2170	07	07		H
LAUREL 3 W	5111	04	PRINCE GEORGE'S	39 5	76 54W	400	24	24		H
MARYLAND SCIENCE CENTER R	5718	04	BALTIMORE (CITY)	39 17	76 37W	20	24	24		H
MECHANICSVILLE 5 NE	5865	03	ST. MARY'S	38 28	76 42W	100	07	07		H
MILLERS 4 NE	5934	06	CARROLL	39 43	76 48W	860	18	18		CH
NATL ARBORETUM DC	6350	04	DISTRICT OF COLUMBIA	38 55	76 58W	50	07	07		H
OAKLAND 1 SE	6620	08	GARRETT	39 25	79 24W	2420	07	07		H
OXON HILL	6800	04	PRINCE GEORGE'S	38 47	76 60W	120	08	08		H
PRINCESS ANNE	7330	01	SOMERSET	38 13	75 41W	20	17	17		H
ROYAL OAK 2 SSW	7806	02	TALBOT	38 43	76 11W	10	17	17		H
SALISBURY 2N	8004	01	WICOMICO	38 24	75 36W	20	17	17		H
SALISBURY FAA AP	8005	01	WICOMICO	38 20	75 31W	48	24	24		H
SAVAGE RIVER DAM	8065	08	GARRETT	39 31	79 8W	1495	08	08	08	CH
SHARPSBURG 5 S	8207	07	WASHINGTON	39 24	77 43W	500	07	07		H
SINES DEEP CREEK	8315	08	GARRETT	39 31	79 25W	2040	07	07		H
SMITHSBURG 2NW	8371	06	WASHINGTON	39 40	77 35W	670	08	08		H
SNOW HILL 4 N	8380	01	WORCESTER	38 14	75 23W	30	17	17		H
SOLOMONS	8405	03	CALVERT	38 19	76 27W	12	08	08		H
UPPER MARLBORO 3 NNW	9070	04	PRINCE GEORGE'S	38 51	76 46W	130	08	08	08	H
WILLIAMSPORT	9570	07	WASHINGTON	39 37	77 51W	360	06	06		H
DELAWARE										
DOVER	2730	02	KENT	39 9	75 30W	30	16	16		H
MILTON 1SE	6104	02	SUSSEX	38 46	75 17W	33	07	07		H
WILMINGTON NEW CASTLE CO AP R	9595	01	NEW CASTLE	39 40	75 36W	79	24	24		HJ
WILMINGTON PORTER RES	9605	01	NEW CASTLE	39 46	75 32W	270	24	24		H

# REFERENCE NOTES

**STATION NAMES:** Name of the city, town or locality. Figures and letters following the station names indicate the distance in miles and direction from the post office or town community center.

**DIVISIONS:** Areas within a state of similar climatological characteristics. Division averages are calculated using data from stations that record temperature and/or precipitation. Station Precipitation totals flagged with an 'F' or 'M' are excluded from the Divisional Average calculations of precipitation. Stations with monthly Temperature averages flagged with an 'F' or 'M' are included in the Divisional Average if there are no more than 9 flagged or missing daily values in the month, else they are excluded from the divisional average for temperature.

**NORMALS:** The average value of the meteorological element over a time period. Effective 1 January 2012, the averaging period is 1981 to 2010. The normals for National Weather Service localities have been adjusted so as to be representative for the current observation site.

**MONTHLY DEGREE DAY TOTALS:** One heating (cooling) degree day is accumulated for each whole degree that the daily mean temperature is below (above) 65 degrees Fahrenheit.

**PRECIPITATION:** Values shown in hundredths of inches are water equivalent totals, i.e., total of liquid and melted frozen precipitation. In the "Monthly Summarized Data" table the total snow and sleet values shown in tenths of inches are unmelted amounts. The max depth on ground values of snow and sleet shown in whole inches are cumulative unmelted amounts. The number of days with .10, .50, 1.00 or more refers to water equivalents.

**PRECIPITATION QUALITY CONTROL:** The NCEI quality control process may flag precipitation data that are spatially inconsistent, exceed climatological limits, or are inconsistent with prevailing weather patterns.

**TEMPERATURE:** Original temperature values are given in the "Daily Temperature" table. Summary temperature information (averages, departures, extremes, monthly degree day totals) is based on the values labeled MAX/MIN.

**WIND:** (As shown in the "Evaporation and Wind" table) the total wind movement in miles over the evaporation pan as determined by an anemometer recorder located 6-8 inches above the pan.

## SYMBOLS AND LETTERS USED IN THE STATION INDEX TABLE

C Station is equipped with recording rain gage (R) but values in this bulletin are from a non-recording rain gage unless indicated by an R.

G Observations appear in the "Soil Temperatures" table.

H Observations appear in the "Snowfall and Snow on the Ground" table.

J Station also published as a Local Climatological Data publication.

VAR Observation time varies.

SR / SS Observation time near sunrise / Observation time near sunset, respectively.

## SYMBOLS AND LETTERS USED IN THE DATA TABLES

(DAILY DATA ARE FOR THE 24 HOURS IMMEDIATELY PRECEDING OBSERVATION TIME.)

BLANK Entries in the "Monthly Summarized Data" table indicate no record.

BLANK Entries in the "Daily Precipitation" and "Snowfall and Snow on the Ground" tables indicate zero.

BLANK Entries in the "Daily Temperature" table indicate a missing record

- No record. Data not recorded or not received in time for publication.

+ Precipitation or temperature extremes occurred on one or more previous dates during the month.

\* Rain gage not read. Precipitation is included in the amount following the asterisks.

Time distribution may not be known. A \* preceding the monthly total indicates precipitation amount is being carried forward to next month's total, and may include amounts from the previous month(s).

a As a subscript, indicates accumulated total.

A Amount of precipitation is the total of observer's entries for the current month. It may include precipitation that occurred during the previous month. Refer to earlier bulletin to determine date of last reading. (Hawaii stations)

B Divisional Departure from normals are computed using 1981-2010 normals.

E Normalized HDD/CDD Calculation. E is appended to the HDD/CDD Calculation when 1-9 individual daily

and/or TMIN values are missing and a Normalized HDD/CDD Calculation is provided. M appears alone if 10 or more daily values are missing.

F Monthly calculation flagged value. F is appended to average and/or total values computed which exclude one or more daily data values that have been flagged by the GHCN-Daily Dataset

M Insufficient or partial data. M is appended to average and/or total values computed with 1-9 daily values missing. M appears alone if 10 or more daily values are missing, (8 or more for wind and evaporation).

N Indicates snow fall or Snowdepth totals are computed with one or more missing days.

R Amounts from recording rain gage.

T Trace. An amount too small to measure.

**SEASONAL TABLES:** Monthly and seasonal snowfall and heating degree days for the 12 months ending with the June data are published in the July issue of this bulletin. Cooling degree days for the calendar year are published in the "Climatological Data Annual Summary."

Information concerning the history of changes in locations, exposure, etc. of substations is kept on file at the National Centers for Environmental Information. Historical information of regular National Weather Service Offices may be obtained from the "Local Climatological Data" annual publication. The contents of this publication may be reprinted or otherwise used freely, with proper credit to the National Centers For Environmental Information. The data are also available digitally.

Effective with the January 2011 Data-Month, COOP Observer Names are no longer included in the Monthly and Annual Climatological Data Publications. This information is not published to ensure the privacy of personal information pursuant to Section 208 of the E-Government Act of 2002 (44 USC 3601).

As of the 2011 Data-Year, Station and Climate Division Maps are no longer being included in the CD Publications. NCEI's Products Branch provides updated Station Maps for various data networks via the Historical Observing Metadata Repository: <http://www.ncdc.noaa.gov/homr>.

The GHCN-Daily Quality Control Flags shown below are displayed as superscripts with the data. For more Information on Global Historical Climatology Network - Daily and flags, see: <http://www.ncdc.noaa.gov/oa/climate/ghcn-daily/> and Comprehensive Automated Quality Assurance of Daily Surface Observations. Durre, Imke, Matthew J. Menne, Byron E. Gleason, Tamara G. Houston, Russell S. Vose, 2010: J. Appl. Meteor. Climatol., 49, 16151633. doi: 10.1175/2010JAMC2375.1

Blank = Passed All checks

D = failed duplicate check

G = failed gap check

I = failed internal consistency check

K = failed streak/frequent-value check

L = failed check on length of multiday period

M = failed megaconsistency check

N = failed naught check

O = failed climatological outlier check

R = failed lagged range check

S = failed spatial consistency check

T = failed temporal consistency check

W = temperature too warm for snow

X = failed bounds check

Z = flagged as a result of an official Datzilla investigation

Beginning with the January 2013 CD Publication, monthly mean temperature calculations have changed to the National Data Stewardship Team standard. Monthly maximum and minimum temperatures are not rounded until after the monthly mean temperature is calculated. This is the most accurate outcome, but may be slightly different from the mean derived from rounded monthly maximum and minimum.

Processing Updates and Errata: The CD Publications are periodically reproduced to include the addition of late reports and reported corrections. The GHCND data version noted on the cover of the publication provides the generation date.

The climate division temperature and precipitation values in this publication are based on simple averages from the current set of NWS-Designated Open and Published COOP and First Order Sites within each division. These values differ from those found in NCEI's nClimDiv product. Beginning in February 2014, the nClimDiv product is used by NCEI's Monitoring Branch and in its monthly climate reports. For more details on nClimDiv, please go to <http://www.ncdc.noaa.gov/monitoring-references/maps/us-climate-divisions.php>.

**These and other publications are available from the National Centers for Environmental Information**

### **Hourly Precipitation Data**

This publication contains hourly precipitation amounts obtained from recording rain gages located at National Weather Service, Federal Aviation Administration, and cooperative observer stations. Published data are displayed in inches and tenths or inches and hundredths at local standard time. HPD includes maximum precipitation for nine (9) time periods from 15 minutes to 24 hours, for selected stations.

### **Climatological Data**

Monthly editions contain station daily maximum and minimum temperatures and precipitation. Some Stations provide daily snowfall, snow depth, evaporation, and soil temperature data. Each edition also contains monthly summaries for heating and cooling degree days (65 degree F base). The July issue contains a recap of monthly heating degree days and snow data for the preceding July through June.

The Annual issue contains monthly and annual averages of temperature, precipitation, temperature extremes, freeze data, soil temperatures, evaporation, and a recap of monthly cooling degree days.

### **Storm Data**

Monthly issues contain a chronological listing, by states, of occurrences of storms and unusual weather phenomena. Reports contain information on storm paths, deaths, injuries, and property damage. An "Outstanding storms of the month" section highlights severe weather events with photographs, illustrations, and narratives. The December issue includes annual tornado, lightning, flash flood, and tropical cyclone summaries.

### **Monthly Climatic Data for the World**

This publication contains monthly means for temperature, pressure, precipitation, vapor pressure, and sunshine for approximately 2,000 surface data collection stations worldwide and monthly mean upper air temperatures, dew point depressions, and wind velocities for approximately 500 observing sites.

### **Local Climatological Data**

LCD publications summarize temperature, relative humidity, precipitation, cloudiness, wind speed and direction observations for several hundred cities in the U.S. and its territories. Each monthly publication also contains 3 hourly weather observations for that month and a hourly summary of precipitation. Annual LCD publications contain a summary of the past calendar year as well as historical averages and extremes.

For Information Call:

(828) 271-4800 Option 2

(828) 271-4010 (TDD)

(828) 271-4876 (Fax)



NOAA National Centers for Environmental Information  
Attn: Customer Engagement Branch  
151 Patton Avenue  
Asheville, NC 28801-5001

Customer Services Number: (828) 271-4800, option 2  
TDD : (828) 271-4010  
Fax number: (828) 271-4876

NCEI now offers free online access to the *Climatological Data* publication.  
Go to : [www.ncdc.noaa.gov](http://www.ncdc.noaa.gov) and choose Most Popular.