



CLIMATOLOGICAL DATA

MARYLAND AND DELAWARE

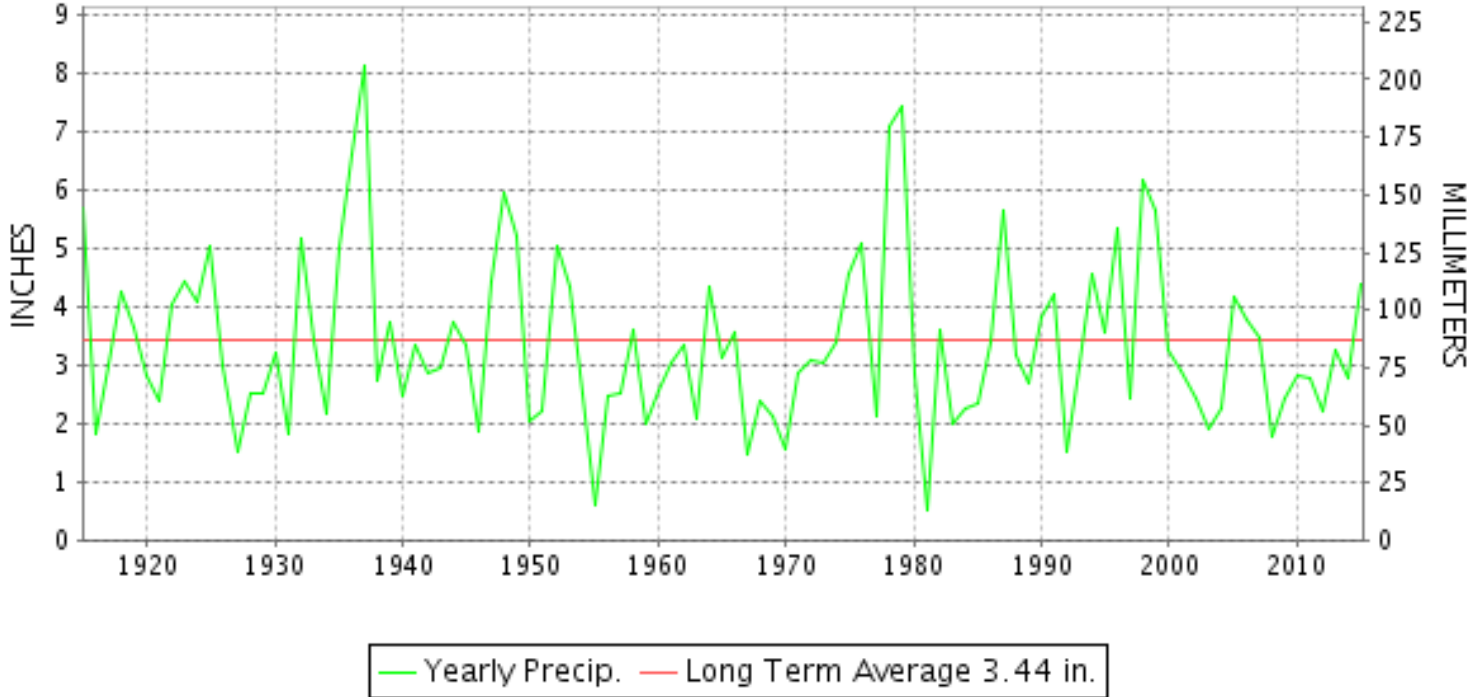
JANUARY 2015

VOLUME 119 NUMBER 01

ISSN 0145-0549

GHCND Ver: 3.20-upd-2015051305

JANUARY PRECIPITATION BY YEAR



TEMPERATURE AND PRECIPITATION EXTREMES

MARYLAND

HIGHEST TEMPERATURE	71	JANUARY 04	SALISBURY FAA AP
LOWEST TEMPERATURE	-5	JANUARY 09+	OAKLAND 1 SE
GREATEST TOTAL PRECIPITATION	6.55		SHARPSBURG 5 S
LEAST TOTAL PRECIPITATION	1.74		CUMBERLAND 2
GREATEST 1 DAY PRECIPITATION	1.83	JANUARY 18	ROYAL OAK 2 SSW
GREATEST TOTAL SNOWFALL	22.2		OAKLAND 1 SE
GREATEST DEPTH OF SNOW OR ICE	9		FROSTBURG 2

"I certify that this is an official publication of the National Oceanic and Atmospheric Administration (NOAA) It is compiled using information from weather observing sites supervised by NOAA/National Weather Service and received at the National Centers for Environmental Information(NCEI), Asheville, North Carolina 28801."

Director
National Centers for Environmental Information

noaa

National
Oceanic and
Atmospheric Administration

National
Environmental Satellite, Data
and Information Service

National
Centers for Environmental Information
Asheville, North Carolina

DELAWARE

HIGHEST TEMPERATURE	65	JANUARY 05	DOVER
LOWEST TEMPERATURE	6	JANUARY 09+	WILMINGTON PORTER RES
GREATEST TOTAL PRECIPITATION	5.61		DOVER
LEAST TOTAL PRECIPITATION	3.68		WILMINGTON PORTER RES
GREATEST 1 DAY PRECIPITATION	1.87	JANUARY 18	WILMINGTON PORTER RES
GREATEST TOTAL SNOWFALL	3.7		WILMINGTON NEW CASTLE CO AP
GREATEST DEPTH OF SNOW OR ICE	2		DOVER

MONTHLY STATION AND DIVISION SUMMARY

STATION	TEMPERATURE (°F)										PRECIPITATION (IN)													
	AVERAGE MAXIMUM	AVERAGE MINIMUM	AVERAGE	DEPARTURE FROM NORMAL	HIGHEST	DATE	LOWEST	DATE	HEATING DEG. DAYS	COOLING DEG. DAYS	NO. OF DAYS				TOTAL	DEPARTURE FROM NORMAL	GREATEST 24 HOURS	DATE	ICE PELLETS, SNOW			NO. OF DAYS		
											MAX		MIN						TOTAL	MAX DEPTH ON GROUND	DATE	.10 OR MORE	.50 OR MORE	1.00 OR MORE
											>=90	<=32	<=32	<=0										
MARYLAND SOUTHERN EASTERN SHORE 01																								
ASSATEAGUE	M	M	M							0	0	0	0	M				0.0						
PRINCESS ANNE	M	M	M		57	20	9	09	895E	0	0	1	14	0	M			0.0						
SALISBURY 2N	45.1M	27.0M	36.1M		69	06+	12	11+	890E	0	0	2	24	0	4.99		1.50	18	M 0.5	M T	21	7	4	2
SALISBURY FAA AP	44.7	27.4	36.0	0.6	71	04	9	11	888	0	0	3	23	0	4.56	0.95	1.25	18	T	0		7	3	1
SNOW HILL 4 N	46.4	25.5	36.0	-1.3	70	04	7	11	891	0	0	1	26	0	4.85	1.28	1.59	24	M 1.0	1	14	8	4	1
--DIVISIONAL DATA----->			36.0	0.0B											4.80	0.80B								
CENTRAL EASTERN SHORE 02																								
ROYAL OAK 2 SSW	41.1	25.3	33.2	-3.1	64	04	11	11	979	0	0	4	28	0	5.33	1.73	1.83	18	3.3	1	21	7	3	3
--DIVISIONAL DATA----->			33.2	-1.6B											5.33	1.35B								
LOWER SOUTHERN 03																								
MECHANICSVILLE 5 NE	40.1	22.9	31.5	-2.5	67	05	9	09+	1029	0	0	4	28	0	4.00	0.77	1.35	24	M 0.8	M T	29	7	3	1
SOLOMONS	41.2M	27.1M	34.2M	-3.1	68	05	11	08	946E	0	0	2	18	0	A* 4.41		0.79	13	M 0.1	M 1	14	2	1	0
--DIVISIONAL DATA----->			32.9	-1.1B											4.21	0.49B								
UPPER SOUTHERN 04																								
BALTIMORE WASH INTL AP	38.8	22.8	30.8	-2.1	62	04	6	08	1052	0	0	6	28	0	3.89	0.84	0.75	18	5.9	1	28	9	4	0
BELTSVILLE	39.1	22.1	30.6	-2.3	65	04	7	08	1059	0	0	7	28	0	3.68	0.82	1.15	24	6.8	3	07	9	2	1
DALECARLIA RSVR	37.7M	22.2M	30.0M	-4.2	49	26	8	08	1076E	0	0	7	28	0	M 3.69	0.67	1.19	24	M 3.8	M 3	08	10	3	1
LAUREL 3 W	38.0	23.9	31.0	-2.6	61	04	8	08	1047	0	0	6	28	0	3.81	0.65	0.71	12	M 2.0			9	4	0
MARYLAND SCIENCE CENTER	39.2	26.5	32.8	-3.0	60	04	10	08	989	0	0	6	24	0	3.70	0.78	0.66	12	0.0			9	3	0
NATL ARBORETUM DC	41.3	24.9	33.1	-2.4	66	05	10	08	985	0	0	5	25	0	3.07	-0.02	0.53	13	M 4.4	3	07	10	2	0
OXON HILL	39.4	24.4	31.9	-3.2	63	05	9	09+	1018	0	0	5	25	0	3.85	0.83	1.16	24	3.4	2	08	8	3	1
UPPER MARLBORO 3 NNW	39.7	21.7	30.7	-2.8	65	05	8	12+	1058	0	0	5	26	0	4.02	1.14	1.17	24	M 4.1	2	09	10	3	1
--DIVISIONAL DATA----->			31.4	-1.9B											3.72	0.17B								
NORTHERN CENTRAL 06																								
ABERDEEN PHILLIPS FLD	37.6	22.6	30.1	-3.5	57	05	8	08	1074	0	0	8	29	0	A 4.18	1.02	0.61	13	6.6	2	22	3	1	0
BRIGHTON DAM	37.5M	20.4M	29.0M		59	05	5	08	1109E	0	0	5	27	0	4.41		1.35	04	7.5	3	27	10	2	2
CONOWINGO DAM	34.5	19.6	27.0	-4.9	50	04	5	07	1171	0	0	11	30	0	FA 1.91	-1.53	0.92	03	M 3.8			5	2	0
CYLBURN	36.8	22.0	29.4	-3.2	59	05	6	09+	1097	0	0	7	27	0	MA 3.62		1.04	24	M 1.0	0		5	2	1
DAMASCUS 3 SSW	35.0	21.9	28.4	-3.0	58	04	4	08	1126	0	0	10	29	0	3.58	0.21	0.79	24	10.4	4	21	7	4	0
EMMITSBURG 2 SE	36.4	18.9	27.6	-2.6	57	05	4	30	1152	0	0	6	30	0	3.25	0.07	0.59	04	13.0	4	07	12	2	0
FREDERICK 2 NNE	M	M	M							0	0	0	0	0	M				0.0					
MILLERS 4 NE	35.7	21.1	28.4	-1.7	57	04	3	08	1128	0	0	7	29	0	3.38	0.17	0.81	24	11.1	3	21	8	3	0
SMITHSBURG 2NW	M	M	M							0	0	0	0	0	M				0.0					
--DIVISIONAL DATA----->			28.6	-2.6B											3.76	0.16B								

MONTHLY STATION AND DIVISION SUMMARY

STATION	TEMPERATURE (°F)														PRECIPITATION (IN)									
	AVERAGE MAXIMUM	AVERAGE MINIMUM	AVERAGE	DEPARTURE FROM NORMAL	HIGHEST	DATE	LOWEST	DATE	HEATING DEG. DAYS	COOLING DEG. DAYS	NO. OF DAYS				TOTAL	DEPARTURE FROM NORMAL	GREATEST 24 HOURS	DATE	ICE PELLETS, SNOW			NO. OF DAYS		
											MAX		MIN						TOTAL	MAX DEPTH ON GROUND	DATE	.10 OR MORE	.50 OR MORE	1.00 OR MORE
											>=90	<=32	<=32	<=0										
APPALACHIAN MOUNTAIN 07																								
CUMBERLAND 2	37.0	20.6	28.8	-3.1	59	05	5	09+	1111	0	0	10	30	0	1.74	-0.92	0.45	04	M 6.9	3	28	5	0	0
FROSTBURG 2	30.7	15.1	22.9	-3.1	60	05	-4	08	1298	0	0	17	31	4	2.27	-1.05	0.59	04	M 17.4	M 9	31	9	1	0
SHARPSBURG 5 S	36.6	19.0	27.8	-3.0	62	05	-1	09+	1147	0	0	7	28	2	A 6.55	3.67	0.89	24	M 6.6	M 2	27	7	1	0
WILLIAMSPORT	M	M	M		59	05	9	12	946E	0	0	0	5	0	M 2.03	-0.97	0.73	24	M 4.5	2	24	7	1	0
--DIVISIONAL DATA----->			26.5	-2.5B											3.52	0.42B								
ALLEGHENY PLATEAU 08																								
OAKLAND 1 SE	32.9	13.9	23.4	-1.7	60	05	-5	09+	1282	0	0	17	31	5	3.43	-0.11	0.71	04	22.2	6	31	13	1	0
SAVAGE RIVER DAM	33.3M	19.3M	26.3M	-1.0	62	05	2	09	1192E	0	0	11	25	0	M 1.88	-0.87	0.44	24	M 8.0	4	31	8	0	0
SINES DEEP CREEK	M	M	M		50	05	-4	09+	1305E	0	0	11	21	3	A* 3.22		0.22	22	M 20.5	8	28	6	0	0
--DIVISIONAL DATA----->			24.9	-0.9B											3.33	-0.22B								
DELAWARE NORTHERN 01																								
WILMINGTON NEW CASTLE CO AP	38.0	22.7	30.3	-2.1	62	04	8	08	1066	0	0	6	28	0	4.45	1.44	1.67	18	M 3.7	1	27	7	4	1
WILMINGTON PORTER RES	35.3M	20.6M	27.9M	-3.9	57	05	6	09+	1139E	0	0	11	30	0	3.68	-0.03	1.87	18	M 1.0	0		5	3	1
--DIVISIONAL DATA----->			29.1	-2.6B											4.07	0.37B								
SOUTHERN 02																								
DOVER	40.5	24.0	32.2	-3.0	65	05	8	08	1008	0	0	3	25	0	A 5.61	2.20	1.85	18	3.5	2	21	6	3	2
--DIVISIONAL DATA----->			32.2	-2.4B											5.61	1.62B								

DAILY PRECIPITATION (INCHES)

STATION	TOTAL	DAY OF MONTH																																
		01	02	03	04	05	06	07	08	09	10	11	12	13	14	15	16	17	18	19	20	21	22	23	24	25	26	27	28	29	30	31		
MARYLAND																																		
SOUTHERN																																		
EASTERN SHORE 01																																		
ASSATEAGUE	M	-	-	-	-	-	-	-	-	-	-	-	-	-	-	-	-	-	-	-	-	-	-	-	-	-	-	-	-	-	-	-	-	-
PRINCESS ANNE	M	-	-	-	-	-	-	-	-	-	*	2.85 _a	0.28	-	-	-	-	-	-	-	-	-	-	1.32	-	-	-	-	-	-	-	-	-	
SALISBURY 2N	4.99			0.07	0.21	0.02						0.65	0.59	0.10					1.50	0.01	0.03	0.08	0.01	1.40	0.01	0.08	0.19	0.01	0.03					
SALISBURY FAA AP	4.56			0.09	0.29			T	T	T		0.98	0.02	0.46				1.25		0.07		0.40	0.80		0.18	T		0.01	0.01					
SNOW HILL 4 N	4.85			0.04	0.18	T			T			0.51	0.42	0.80				0.93		0.15		1.59				0.22			0.01	0.01				
CENTRAL																																		
EASTERN SHORE 02																																		
ROYAL OAK 2 SSW	5.33			0.13	0.11	0.02	0.08	T		T		1.11	0.13	0.06				1.83	0.02		0.15		T	1.55		0.09	0.05			T				
LOWER SOUTHERN 03																																		
MECHANICSVILLE 5 NE	4.00				0.19	0.01	T	0.02		T		0.15	0.86	T	0.07			0.10	0.99		0.03	T	1.35	T	0.13	0.09			0.01	T				
SOLOMONS	A* 4.41		*	*	0.10 _a	T				*	*	0.40 _a	0.79	0.10	T		*	*	1.74 _a	0.01	0.02		*	*	1.22 _a	0.03			T	-				
UPPER SOUTHERN 04																																		
BALTIMORE WASH INTL AP	3.89			0.58	0.21		0.22	T		T		T	0.70		T			0.75	T		0.16	T	0.44	0.62		0.13	0.01		0.07	T				
BELTSVILLE	3.68			0.08	0.65	0.07	0.13	0.11		T		0.25	0.45	T				0.01	0.41			0.10	1.15		0.05	0.16			0.06					
DALECARLIA RSVR	M 3.69				0.69		0.24	0.10				-	0.50					0.30	0.17			0.10	1.19	0.02	0.13	0.20			0.05					
LAUREL 3 W	3.81			0.63	0.27		0.25					0.71	0.02					0.25			0.16	0.66	0.61		0.17			0.08						
MARYLAND SCIENCE CENTER	3.70			0.65	0.40		0.22					0.66						0.47			0.12	0.01	0.40	0.61		0.12		0.04						
NATL ARBORETUM DC	3.07			0.07	0.52	0.08	0.16	0.08				0.30	0.53	0.10				0.42	0.21		0.11	0.11	0.40	0.61		T	0.08	0.23			0.06			
OXON HILL	3.85			T	0.49	0.06	0.07	0.11	T			0.15	0.70	0.01	T	0.11		0.03	0.66		0.07	0.01	1.16	0.01	0.12	0.16	T		0.04	T				
UPPER MARLBORO 3 NNW	4.02			0.10	0.05	0.30	0.08	0.08				0.10	0.86	T	T			0.10	0.72		T	0.10	1.17			0.10	0.23	0.03						
NORTHERN CENTRAL 06																																		
ABERDEEN PHILLIPS FLD	A 4.18		*	*	0.89 _a	T	0.15		T			0.09	0.61					*	1.20 _a		T	0.12	*	1.02 _a	0.08	T		0.02						
BRIGHTON DAM	4.41			0.05	1.35	0.15	0.18					0.28	0.43	T				0.05	T		0.15	0.15	1.10	0.05	0.02	0.35			0.10					
CONOWINGO DAM	FA 1.91			0.92	0.12		0.14				0.10	0.63						0.00 ^L	0.32 ^L	0.00 ^L	0.00 ^L	0.07 ^L	0.00 ^L	0.90 ^L	0.00 ^L	0.10 ^L								
CYLBURN	MA 3.62		*	*	*	1.55 _a						-	0.58					0.11			0.10	1.04	0.17		0.17			0.07						
DAMASCUS 3 SSW	3.58			0.50	0.61		0.25	T				0.75		T				T	T	T	0.21	T	0.23	0.79	0.01	0.09	0.09	0.05	T					
EMMITSBURG 2 SE	3.25				0.59	0.10	0.10	0.25	T			0.10	0.50		0.05				T			0.30	0.33	0.33	0.25	0.25	0.10	T	T	T				
FREDERICK 2 NNE	M	-	-	-	-	-	-	-	-	-	-	-	-	-	-	-	-	-	-	-	-	-	-	-	-	-	-	-	-	-	-	-	-	
MILLERS 4 NE	3.38			0.43	0.50	0.14	0.24	T	0.01	T		0.63	0.04	T				T	T		0.21	T	0.81	T	0.23	0.08		0.05	0.01					
SMITHSBURG 2NW	M	-	-	-	-	-	-	-	-	-	-	-	-	-	-	-	-	-	-	-	-	-	-	-	-	-	-	-	-	-	-	-	-	
APPALACHIAN																																		
MOUNTAIN 07																																		
CUMBERLAND 2	1.74			0.03	0.45	0.05	0.10	0.08	0.01		T	0.07	0.03		T						0.02		T	0.05	0.38	T	0.27	0.15		0.05	T			
FROSTBURG 2	2.27			0.01	0.59	0.04	0.12	0.10	T	0.01	T	0.12									0.13	T	0.17	0.43		0.30	0.19	T		0.06	T			
SHARPSBURG 5 S	A 6.55	*	*	*	4.41 _a	0.21	0.10	0.07	T			0.21	0.24		0.02					T		0.13	0.89	T	0.05	0.19	T		0.03	T				
WILLIAMSPORT	M 2.03				0.43		0.10	0.13				0.15	0.30		0.02	-						0.10	0.73		-	-			0.07					
ALLEGHENY PLATEAU 08																																		
OAKLAND 1 SE	3.43			0.01	0.71	0.33	0.26	0.28	0.10	0.10	0.05	0.30	0.15								0.15	0.04	0.08	0.10	0.03	0.25			0.12	0.37				
SAVAGE RIVER DAM	M 1.88			0.15	0.42	0.05	0.13	0.10	-	T		-	-	-	-	-	-	-	-	-	-	T	0.18	-	0.44	0.24	0.17							

DAILY PRECIPITATION (INCHES)

STATION	TOTAL	DAY OF MONTH																														
		01	02	03	04	05	06	07	08	09	10	11	12	13	14	15	16	17	18	19	20	21	22	23	24	25	26	27	28	29	30	31
SINES DEEP CREEK	A* 3.22	*	0.00 _a	*	*	1.15 _a	0.10	0.15	0.04	0.07	*	*	0.22 _a	0.17				*	*	0.13 _a		0.03	0.22		*	*	0.60 _a	0.10	0.03		0.21	-
DELAWARE NORTHERN 01																																
WILMINGTON NEW CASTLE CO AP	4.45			0.57	0.33	T	0.15	T		0.01			0.71	T					1.67	T	0.08	0.01	0.23	0.65	T	0.04	T		T	T		
WILMINGTON PORTER RES	3.68						T						0.90						1.87		0.14		0.15	0.62	T	T			T			
SOUTHERN 02																																
DOVER	A 5.61			*	*	0.82 _a	0.02			T			0.90	0.24	0.01	T			1.85		0.22	T		1.30		0.13	0.09			0.03		

DAILY TEMPERATURES (°F)

STATION	OB. TIME	MAX/MIN	DAY OF MONTH																															AVERAGE			
			01	02	03	04	05	06	07	08	09	10	11	12	13	14	15	16	17	18	19	20	21	22	23	24	25	26	27	28	29	30	31				
MARYLAND SOUTHERN EASTERN SHORE 01 ASSATEAGUE	VA	MAX MIN																																			M M M
PRINCESS ANNE	17	MAX MIN								35 18	24 14	44 9		55 36	53 31	41 30	45 21	48 29		49 28	57 26	55 26	46 30	46 27			48 34	46 30	40 25						M M M		
SALISBURY 2N	17	MAX MIN	44 22	47 32	46 33	68 46	69 37	69 26	31 21	22 12	41 12	35 18	44 12		43 31	35 27	37 29	45 28	40 22	54 29	50 32	55 27	50 31	44 32	43 27	42 36	50 32	47 38	27 27	22 17	38 34	45 36	36 34	45.1 27.0			
SALISBURY FAA AP	24	MAX MIN	46 20	49 32	53 34	71 50	55 32	38 24	31 18	24 14	44 22	30 11	47 9	55 36	41 31	36 30	39 30	48 29	41 23	58 35	49 28	57 26	42 33	46 30	46 27	44 37	52 34	48 34	37 30	38 25	41 19	47 26	34 19	44.7 27.4			
SNOW HILL 4 N	17	MAX MIN	46 19	48 28	48 30	70 44	68 37	40 26	40 21	25 11	43 14	42 16	44 7	53 25	52 33	34 29	41 29	47 28	44 19	55 24	49 30	55 24	48 29	44 30	44 24	42 35	51 32	51 32	43 27	38 22	49 16	45 33	39 18	46.4 25.5			
CENTRAL EASTERN SHORE 02 ROYAL OAK 2 SSW	17	MAX MIN	43 24	45 30	43 28	64 40	63 34	35 22	31 19	22 12	38 18	30 17	42 11	39 26	38 28	31 23	37 28	45 23	39 22	47 28	47 31	49 24	36 28	45 29	41 23	41 32	50 36	43 31	38 28	37 23	38 18	44 30	33 19	41.1 25.3			
LOWER SOUTHERN 03 MECHANICSVILLE 5 NE	07	MAX MIN	37 21	44 23	46 28	46 34	67 36	42 24	34 21	27 9	26 9	40 17	29 10	42 10	39 33	34 23	28 23	37 24	47 25	37 30	45 24	47 24	48 31	36 24	47 25	42 29	40 29	51 29	36 26	34 21	36 17	38 20	41 18	40.1 22.9			
SOLOMONS	08	MAX MIN	40 29	45 36		68 36	41 28	35 25	26 11	39 18				41 18	39 30	31 25	33 28	44 27		48 26	46 28	47 31	39 30	45 28			51 34	38 27	35 24	35 25	41 33	41 33	41.2 27.1				
UPPER SOUTHERN 04 BALTIMORE WASH INTL AP	24	MAX MIN	43 17	46 26	39 26	62 39	47 24	28 14	24 11	22 6	37 22	25 10	40 9	40 32	39 24	31 23	40 26	44 26	34 22	41 26	46 27	46 26	34 30	46 24	41 33	40 34	49 34	40 26	36 19	36 17	35 20	42 16	31 16	38.8 22.8			
BELTSVILLE	08	MAX MIN	35 17	43 19	46 26	65 34	62 39	39 20	28 13	24 7	26 8	37 15	26 10	40 11	39 32	32 23	30 22	38 21	42 23	37 29	42 29	46 27	47 30	35 23	45 24	41 31	41 33	49 35	31 26	32 20	34 17	38 20	39 17	39.1 22.1			
DALECARLIA RSVR	08	MAX MIN	36 21	43 21	46 27	46 27	44 35	38 20	27 16	23 8	26 9	38 15	26 12	38 16	32 22	29 22	39 22	43 24	37 24	41 28	46 25	47 26	35 32	44 24	42 26	40 34	49 32	49 32	32 26	33 24	34 25	34 21	39 17	37.7 22.2			
LAUREL 3 W	24	MAX MIN	42 23	44 34	39 31	61 37	51 25	27 18	24 11	21 8	36 10	25 12	39 14	37 30	28 27	39 21	41 25	35 28	40 21	42 29	45 30	42 32	44 30	40 28	40 32	48 33	43 33	34 26	34 17	34 21	37 20	31 15	38.0 23.9				
MARYLAND SCIENCE CENTER	24	MAX MIN	45 26	46 33	41 34	60 39	49 26	28 21	26 13	24 10	38 24	26 16	41 20	41 33	40 25	31 24	41 29	43 30	33 23	42 31	45 34	46 32	37 30	45 31	41 33	39 35	41 27	39 26	41 22	34 24	36 21	40 19	30 19	39.2 26.5			
NATL ARBORETUM DC	07	MAX MIN	36 22	44 27	47 29	56 31	66 40	41 21	30 20	26 10	38 11	27 16	30 13	38 17	27 33	41 24	39 25	44 24	40 24	49 34	47 26	48 29	48 30	46 25	44 36	44 36	50 34	50 34	36 27	36 22	37 19	40 24	41 18	41.3 24.9			
OXON HILL	08	MAX MIN	36 22	43 22	45 30	46 36	63 39	40 21	29 20	25 9	26 9	39 17	27 15	41 16	40 33	34 23	31 23	38 23	44 23	37 23	45 23	47 23	47 30	36 32	46 26	41 26	42 35	49 35	35 26	34 21	36 20	39 17	40 17	39.4 24.4			
UPPER MARLBORO 3 NNW	08	MAX MIN	37 17	43 19	46 26	47 33	65 39	41 20	30 15	26 8	26 8	39 16	28 8	42 8	39 33	34 22	40 22	44 22	37 21	41 31	47 23	41 25	47 30	35 22	46 22	43 34	41 34	51 25	34 34	35 25	36 15	39 15	41 17	39.7 21.7			
NORTHERN CENTRAL 06 ABERDEEN PHILLIPS FLD	07	MAX MIN	36 26	42 26	44 25	41 32	57 39	40 19	25 13	24 8	26 9	36 15	22 9	37 13	38 31	31 22	40 24	44 20	32 20	42 20	42 32	44 25	44 29	34 29	43 25	40 25	40 34	49 31	32 28	35 20	36 15	37 16	42 15	37.6 22.6			

DAILY TEMPERATURES (°F)

STATION	OB. TIME	MAX/MIN	DAY OF MONTH																															AVERAGE			
			01	02	03	04	05	06	07	08	09	10	11	12	13	14	15	16	17	18	19	20	21	22	23	24	25	26	27	28	29	30	31				
BRIGHTON DAM	08	MAX		40	44	44	59	36	36	22	25	35	21	37	37	29	27	37	40	34	39	43	43	33	42	40	38	46	46	46	33	35	38	37.5			
		MIN		16	24	33	36	18	13	5	7	12	6	12	27	22	22	23	20	22	27	23	24	30	21	26	33	29	25	16	11	16	14	20.4			
CONOWINGO DAM	07	MAX	40	41	39	50	38	24	23	27	34	19	34	36	29	28	34	33	39	39	41	41	33	39	37	37	45	31	31	31	31	38	26	34.5			
		MIN	21	25	28	37	18	12	5	6	11	6	8	29	20	21	22	9	18	25	25	26	27	25	25	29	29	26	19	16	15	10	14	19.6			
CYLBURN	08	MAX	33	42	43	43	59	37	26	23	24	35	21	38	38	30	29	38	41	35	39	44	44	34	44	41	39	47	31	34	34	36	38	36.8			
		MIN	25	26	27	33	36	18	17	6	6	12	8	10	29	21	21	25	19	19	33	28	26	29	25	25	34	30	25	18	17	18	15	22.0			
DAMASCUS 3 SSW	22	MAX	40	41	36	58	42	26	21	17	34	23	36	35	35	25	35	38	34	39	42	42	32	40	38	37	44	39	31	29	32	36	27	35.0			
		MIN	20	30	32	36	22	16	9	4	17	9	13	30	18	18	20	25	19	27	32	27	29	30	23	31	34	22	16	16	18	13	21.9				
EMMITSBURG 2 SE	07	MAX	33	42	43	37	57	43	23	24	23	23	23	35	38	38	27	37	41	36	40	45	40	33	44	38	40	45	34	36	35	36	38	36.4			
		MIN	22	26	25	25	34	18	17	7	7	9	6	6	28	19	19	24	18	18	22	26	23	25	23	23	32	29	26	14	5	4	5	18.9			
FREDERICK 2 NNE	07	MAX																																	M		
		MIN																																		M	
MILLERS 4 NE	18	MAX	40	41	35	57	54	26	22	15	33	25	37	35	36	25	35	40	34	38	43	41	36	41	38	38	42	38	33	33	30	37	28	35.7			
		MIN	22	27	26	35	24	16	12	3	13	8	7	30	21	18	19	24	16	26	30	26	26	29	24	31	33	25	22	15	13	23	11	21.1			
SMITHSBURG 2NW	08	MAX																																		M	
		MIN																																			M
APPALACHIAN MOUNTAIN 07																																					
CUMBERLAND 2	18	MAX	35	45	46	38	59	32	29	20	27	29	27	35	41	32	31	41	41	45	42	45	46	33	38	40	40	45	31	30	34	37	33	37.0			
		MIN	23	24	29	29	30	19	16	5	5	6	6	8	27	21	22	22	22	23	25	26	26	30	26	26	33	30	23	15	15	15	13	20.6			
FROSTBURG 2	07	MAX	24	34	36	48	60	22	20	9	26	23	17	33	39	24	26	32	29	36	41	35	40	34	31	33	32	37	25	21	24	35	25	30.7			
		MIN	14	19	23	27	22	13	8	-4	-3	-3	-3	13	18	13	14	16	16	15	29	24	25	26	19	18	26	25	16	9	9	18	5	15.1			
SHARPSBURG 5 S	07	MAX	35	44	45	42	62	36	29	20	23	34	26	36	36	31	27	38	40	38	41	45	40	34	41	41	41	44	33	30	33	35	35	36.6			
		MIN	18	19	23	33	36	18	17	-1	-1	10	8	9	31	19	19	18	18	17	27	22	22	25	22	21	29	33	24	17	11	13	11	19.0			
WILLIAMSPORT	06	MAX					59	42						36	37							42	44												M		
		MIN					37	18						9	31							26	31													M	
ALLEGHENY PLATEAU 08																																					
OAKLAND 1 SE	07	MAX	24	33	35	56	60	21	20	8	27	21	24	40	46	29	31	32	26	50	45	38	42	37	32	32	32	36	36	22	17	43	25	32.9			
		MIN	15	17	19	32	20	13	7	-5	-5	-3	-3	-3	18	15	16	17	18	17	29	20	20	29	14	15	15	29	16	11	12	12	5	13.9			
SAVAGE RIVER DAM	08	MAX	27	36	37	37	62	28	23		29	25	18		37	37		33	32	37		38	40	38		34	35	38	31	25	26		29	33.3			
		MIN	20	23	31	31	27	17	13		2	3	3		25	18		21	22	21		24	24	27		17	30	31	20	15	8		10	19.3			
SINES DEEP CREEK	07	MAX		32			50	30	21	9	18			39	38	26	30	29			43	36	41	37	31		38	38	20	25	38			M			
		MIN		16			24	16	9	-4	-4			-3	22	16	17	17			18	22	22	20	17		14	17	9	9	12			M			
DELAWARE NORTHERN 01																																					
WILMINGTON NEW CASTLE CO AP	24	MAX	42	43	43	62	49	26	24	20	36	23	41	38	38	33	37	45	32	43	45	46	34	41	41	38	49	35	34	34	34	34	42	29	38.0		
		MIN	23	27	24	41	24	14	12	8	20	11	11	33	23	21	27	24	17	27	30	27	25	28	25	33	32	28	22	19	14	20	14	22.7			
WILMINGTON PORTER RES	24	MAX	39		41	43	57	23	21	18	33	22	37	37	37	30	33	39	39	43	42	43	32	39	39	39	44	31	32	31	31	39	25	35.3			
		MIN	24		31	30	22	16	10	6	6	12	13	32	21	18	25	24	16	16	27	27	26	26	24	31	29	24	9	20	20	20	12	20.6			
SOUTHERN 02																																					
DOVER	16	MAX	42	46	41	64	65	32	26	21	37	36	43	37	37	34	38	44	40	46	45	46	45	43	42	39	50	34	35	36	35	40	36	40.5			

MARYLAND AND DELAWARE
201501

DAILY TEMPERATURES (°F)

STATION	OB. TIME	MAX/MIN	DAY OF MONTH																															AVERAGE
			01	02	03	04	05	06	07	08	09	10	11	12	13	14	15	16	17	18	19	20	21	22	23	24	25	26	27	28	29	30	31	
		MIN	20	33	25	41	32	19	15	8	15	13	9	34	28	20	27	27	19	25	33	26	27	27	23	33	33	30	25	18	15	30	14	24.0

SNOWFALL AND SNOW ON GROUND (INCHES)

STATION	DAY OF MONTH																																
	01	02	03	04	05	06	07	08	09	10	11	12	13	14	15	16	17	18	19	20	21	22	23	24	25	26	27	28	29	30	31		
MARYLAND SOUTHERN EASTERN SHORE 01																																	
ASSATEAGUE	SNOWFALL													0.5																			
PRINCESS ANNE	SNOWFALL													T								T											
SALISBURY 2N	SNOWFALL	-	-	-	-	-	-	-	-	-	-	-	-	0.5	-	-	-	-	-	-	-	-	-	-	-	-	-	-	-	-	-	-	
	SN ON GND	-	-	-	-	-	-	-	-	-	-	-	-	T	-	-	-	-	-	-	-	T	-	-	-	-	-	-	-	-	-	-	
SALISBURY FAA AP	SNOWFALL						T	T	T					T								T											
	SN ON GND																									T	T						
SNOW HILL 4 N	SNOWFALL	-	-	-	-	-	-	-	T	-	-	-	-	1.0	-	-	-	-	-	-	-	-	-	-	-	-	-	T	-	-	-	-	
	SN ON GND	-	-	-	-	-	-	-	-	-	-	-	-	1	-	-	-	-	-	-	-	-	-	-	-	-	-	-	-	-	-	-	
CENTRAL EASTERN SHORE 02																																	
ROYAL OAK 2 SSW	SNOWFALL					1.0	T		T					0.5								1.0	T	T		T	0.8				T		
	SN ON GND					T								T								1											
LOWER SOUTHERN 03																																	
MECHANICSVILLE 5 NE	SNOWFALL				-	-	T	T	-	-	-	-	-	T	0.3							T	T	T	-	-	0.5				-	T	
	SN ON GND	-	-	-	-	-	T	-	-	-	-	-	-	T	T	T	-	-	-	-	-	-	-	-	-	-	T	T	T	-	-	-	
SOLOMONS	SNOWFALL	-	-	-	-	-	T	-	-	-	-	-	-	0.1	T	-	-	-	-	-	-	-	T	-	-	-	-	T	-	-	T	-	
	SN ON GND	-	-	-	-	-	T	-	-	-	-	-	-	1	T	-	-	-	-	-	-	-	-	-	-	-	-	T	-	-	-	-	
UPPER SOUTHERN 04																																	
BALTIMORE WASH INTL AP	SNOWFALL					2.3	T		T					T								2.6	T			1.0	T			T			
	SN ON GND					1	1	1	1					T												T	1	1					
BELTSVILLE	SNOWFALL					1.5	1.5		T			T		T									2.0			T	1.5				0.3		
	SN ON GND					2	3	2	2	1	1	T		T									1			T	1	1	T	T			
DALECARLIA RSVR	SNOWFALL					0.1	3.4																0.1	-			0.2						
	SN ON GND					T	3	3																									
	WTR EQUIV						3.0	3.1																									
LAUREL 3 W	SNOWFALL	-	-	-	-	-	-	-	-	-	-	-	-	-	-	-	-	-	-	-	-	1.0	-	-	-	-	-	-	-	1.0	-	-	
MARYLAND SCIENCE CENTER	SNOWFALL																																
NATL ARBORETUM DC	SNOWFALL	-	-	-	-	-	1.7	1.0	-	-	-	-	-	0.1	-	-	-	-	-	-	-	-	0.7	-	-	-	T	0.9			T	-	
	SN ON GND	-	-	-	-	-	2	3	2	1	-	-	-	T	-	-	-	-	-	-	-	-	T	-	-	-	T	1	T	T	T	-	
OXON HILL	SNOWFALL					0.8	1.0	T						0.2	T								0.5		T			0.8	T		0.1	T	
	SN ON GND					1	2	2	1	T	T			T													1	T					
	WTR EQUIV	-	-	-	-	-	0.1	-	-	-	-	-	-	-	-	-	-	-	-	-	-	-	-	-	-	-	-	-	-	-	-	-	
UPPER MARLBORO 3 NNW	SNOWFALL	-	-	-	-	-	0.8	1.2	-	-	-	-	-	0.1	T	-	-	-	-	-	-	0.1	1.0	-	T	-	-	0.9	T	-	T	-	
	SN ON GND	-	-	-	-	-	1	2	2	2	1	1	T	T		-	-	-	-	-	-	-	1	-	-	-	-	1	T	-	-	-	
	WTR EQUIV	-	-	-	-	-	-	-	-	-	-	-	-	-	-	-	-	-	-	-	-	-	-	-	-	-	-	-	-	-	-	-	
NORTHERN CENTRAL 06																																	
ABERDEEN PHILLIPS FLD	SNOWFALL					T	2.5		T														2.5				1.5	T			0.1		
	SN ON GND					T	2	1	T														2	T			1	T			T		
BRIGHTON DAM	SNOWFALL					3.0																0.5	1.0				3.0						

Snowfall: Includes snow and ice. Values for NWS stations (J index note) are Mid-Mid (LST).

Snow on ground: Includes snow, sleet, ice, and hail. Values for NWS stations (J index note) are observed at 12 UTC (GMT).

Water Equivalent: Given for NWS stations (J index note) only, when snow depth is 2 inches or more, and is measured at 18 UTC (GMT).

SNOWFALL AND SNOW ON GROUND (INCHES)

STATION	DAY OF MONTH																															
	01	02	03	04	05	06	07	08	09	10	11	12	13	14	15	16	17	18	19	20	21	22	23	24	25	26	27	28	29	30	31	
CONOWINGO DAM CYLBURN	SN ON GND					3.0																1					3					
	WTR EQUIV																					0.5	1.0					3.0				
	SNOWFALL	-	-	-	-	-	2.0	-	-	-	-	1.0	-	-	-	-	-	-	-	-	-	0.8	-	-	-	-	-	-	-	-	-	-
DAMASCUS 3 SSW	SN ON GND	-	-	-	-	-	-	-	-	-	-	-	-	-	-	-	-	-	-	-	-	-	-	-	-	-	-	-	-	-	-	
	SNOWFALL	-	-	-	-	-	2.8	T						0.1						T	T	3.8	0.1	0.3	T		2.0	1.2		0.1	T	
EMMITSBURG 2 SE	SN ON GND					3	2	2	2	1	1	T	T	T	T	T	T	T	T	T	4	1	T	T	T	2	3	2	2	1	1	
	SNOWFALL					1.0	3.0	T							1.0								3.0	1.0	1.0	T	3.0			T		
	SN ON GND					1	4																3									
FREDERICK 2 NNE MILLERS 4 NE	WTR EQUIV							3.0																								
	SNOWFALL					T	3.1	T	0.2	T				T							T	2.9	T		1.8		1.3	1.2		0.5	0.1	
SMITHSBURG 2NW APPALACHIAN MOUNTAIN 07 CUMBERLAND 2	SN ON GND					3	2	2	1	1	T	T	T	T	T	T	T	T	T	T	3	1	T	1	T	1	2	1	2	1	1	
	WTR EQUIV					0.2	0.2	0.2	0.1	0.1												0.2	0.1		0.4		0.3	0.2	0.2	0.2	0.2	
	SNOWFALL	-	-	-	-	-	1.0	1.0	0.1	-	-	-	-	-	T	-	-	-	-	-	-	T	0.2	-	1.0	T	1.3	2.0	-	-	0.3	T
FROSTBURG 2	SN ON GND	-	-	-	-	1	2	2	2	2	2	1	-	-	T	-	-	-	-	-	T	-	-	1	-	1	3	3	2	2	2	
	SNOWFALL	-	-	-	-	T	1.3	1.8	T	0.2	T									0.6	T	2.3	2.5		2.8	2.8	1.1		1.7	0.3		
	SN ON GND	-	-	-	-	T	1	3	3	3	-	3	2	1	1	1	1	T	T	1	1	T	3	3	4	4	6	8	8	7	9	9
SHARPSBURG 5 S	WTR EQUIV	-	-	-	-	-	-	-	-	-	-	-	-	-	-	-	-	-	-	-	-	-	-	-	-	-	1.2	-	-	1.6	-	
	SNOWFALL	-	-	-	-	-	0.7	1.0	T						0.2								1.4		0.7	T	2.3	T		0.3	T	
	SN ON GND	-	-	-	-	-	T	1	1	1	T	T											1		T	T	T	2	1	T	T	T
WILLIAMSPORT ALLEGHENY PLATEAU 08	SNOWFALL	-	-	-	-	-	1.7	-	-	-	-	-	-	-	T	-	-	-	-	-	-	0.3	-	2.4	-	-	-	-	-	0.1	-	
	SN ON GND	-	-	-	-	-	2	-	-	-	-	-	-	-	-	-	-	-	-	-	-	-	-	2	-	-	-	-	-	-	-	-
	WTR EQUIV	-	-	-	-	-	0.1	0.1	-	-	-	-	-	-	-	-	-	-	-	-	-	-	0.1	-	0.7	-	-	-	-	-	0.1	-
OAKLAND 1 SE	SNOWFALL					2.4	4.5	1.0		0.5			0.1							1.7		0.5		0.5		3.5	2.0		1.7	3.8		
	SN ON GND					2	6	5	3	2	2	1	1							1					3	5	3	3	3	6		
SAVAGE RIVER DAM	SNOWFALL	-	-	-	-	1.0	1.0	-	T	-	-	-	-	-	-	-	-	-	-	-	T	2.0	-	1.0	-	1.0	2.0	-	-	-	-	
	SN ON GND	-	-	-	-	1	3	-	3	2	2	-	2	1	-	T	T	T	-	T	T	2	-	2	2	2	4	4	4	-	4	
SINES DEEP CREEK	SNOWFALL	-	-	-	-	2.0	2.0	0.9	1.0	-	-	-	-	-	-	-	-	-	-	-	1.0	-	0.2	3.5	-	-	4.5	3.0	0.5	-	1.9	-
	SN ON GND	-	-	-	-	-	4	5	6	-	-	-	-	-	-	-	-	-	-	1	1	1	4	-	-	-	5	7	8	-	7	-
DELAWARE NORTHERN 01 WILMINGTON NEW CASTLE CO AP	SNOWFALL					1.8	-		T													1.1	T	0.3	T		0.5	T		T	T	
	SN ON GND								1	T													1			T	1					
	WTR EQUIV	-	-	-	-	-	0.2	-	-	-	-	-	-	-	-	-	-	-	-	-	-	-	-	-	-	-	-	-	-	-	-	-
WILMINGTON PORTER RES	SNOWFALL	-	-	-	-	1.0																										

Snowfall: Includes snow and ice. Values for NWS stations (J index note) are Mid-Mid (LST).

Snow on ground: Includes snow, sleet, ice, and hail. Values for NWS stations (J index note) are observed at 12 UTC (GMT).

Water Equivalent: Given for NWS stations (J index note) only, when snow depth is 2 inches or more, and is measured at 18 UTC (GMT)

SNOWFALL AND SNOW ON GROUND (INCHES)

STATION		DAY OF MONTH																															
		01	02	03	04	05	06	07	08	09	10	11	12	13	14	15	16	17	18	19	20	21	22	23	24	25	26	27	28	29	30	31	
SOUTHERN 02 DOVER	SN ON GND		-																														
	SNOWFALL SN ON GND						1.0 1			T					T								2.5 2	T 1						T			

Snowfall: Includes snow and ice. Values for NWS stations (J index note) are Mid-Mid (LST).

Snow on ground: Includes snow, sleet, ice, and hail. Values for NWS stations (J index note) are observed at 12 UTC (GMT).

Water Equivalent: Given for NWS stations (J index note) only, when snow depth is 2 inches or more, and is measured at 18 UTC (GMT)

PAN EVAPORATION AND WIND

STATION		DAY OF MONTH																															TOTAL OR AVERAGE				
		01	02	03	04	05	06	07	08	09	10	11	12	13	14	15	16	17	18	19	20	21	22	23	24	25	26	27	28	29	30	31					
MARYLAND UPPER SOUTHERN 04 BELTSVILLE	WIND	-	-	-	-	-	-	-	-	-	-	-	-	-	-	-	-	-	-	-	-	-	-	-	-	-	-	-	-	-	-	-	-	-	-	M	
	EVAP	-	-	-	-	-	-	-	-	-	-	-	-	-	-	-	-	-	-	-	-	-	-	-	-	-	-	-	-	-	-	-	-	-	-	M	
	MAX	-	-	-	-	-	-	-	-	-	-	-	-	-	-	-	-	-	-	-	-	-	-	-	-	-	-	-	-	-	-	-	-	-	-	M	
	MIN	-	-	-	-	-	-	-	-	-	-	-	-	-	-	-	-	-	-	-	-	-	-	-	-	-	-	-	-	-	-	-	-	-	-	M	
UPPER MARLBORO 3 NNW	WIND	-	-	-	-	-	-	-	-	-	-	-	-	-	-	-	-	-	-	-	-	-	-	-	-	-	-	-	-	-	-	-	-	-	-	M	
	EVAP	-	-	-	-	-	-	-	-	-	-	-	-	-	-	-	-	-	-	-	-	-	-	-	-	-	-	-	-	-	-	-	-	-	-	M	
	MAX	-	-	-	-	-	-	-	-	-	-	-	-	-	-	-	-	-	-	-	-	-	-	-	-	-	-	-	-	-	-	-	-	-	-	-	M
	MIN	-	-	-	-	-	-	-	-	-	-	-	-	-	-	-	-	-	-	-	-	-	-	-	-	-	-	-	-	-	-	-	-	-	-	-	M
ALLEGHENY PLATEAU 08 SAVAGE RIVER DAM	WIND	-	-	-	-	-	-	-	-	-	-	-	-	-	-	-	-	-	-	-	-	-	-	-	-	-	-	-	-	-	-	-	-	-	-	M	
	EVAP	-	-	-	-	-	-	-	-	-	-	-	-	-	-	-	-	-	-	-	-	-	-	-	-	-	-	-	-	-	-	-	-	-	-	-	M
	MAX	-	-	-	-	-	-	-	-	-	-	-	-	-	-	-	-	-	-	-	-	-	-	-	-	-	-	-	-	-	-	-	-	-	-	-	M
	MIN	-	-	-	-	-	-	-	-	-	-	-	-	-	-	-	-	-	-	-	-	-	-	-	-	-	-	-	-	-	-	-	-	-	-	-	M

Evaporation: Is measured in hundreths of inches.

Wind: Is measured in miles.

Max and Min: The maximum and minimum temperatures (Fahrenheit) of the water in the evaporation pan.

STATION INDEX

STATION	INDEX NO.	DIVISION	COUNTY	LATITUDE	LONGITUDE	ELEVATION (IN FEET)	OBSERVATION TIME AND TABLES			
							LOCAL STD TIME			
							TEMP	PRECIP	EVAP	SPECIAL SEE (NOTES)
MARYLAND										
ABERDEEN PHILLIPS FLD	0015	06	HARFORD	39 28	76 10W	57	07	07		CH
ASSATEAGUE	0335	01	WORCESTER	38 4	75 13W	10	VAR	VAR		H
BALTIMORE WASH INTL AP R	0465	04	ANNE ARUNDEL	39 10	76 41W	156	24	24		HJ
BELTSVILLE	0700	04	PRINCE GEORGE'S	39 2	76 56W	145	08	08	08	CH
BRIGHTON DAM	1125	06	MONTGOMERY	39 11	77 0W	330	08	08		H
CONOWINGO DAM	2060	06	HARFORD	39 39	76 11W	40	07	07		H
CUMBERLAND 2	2282	07	ALLEGANY	39 39	78 45W	730	18	18		H
CYLBURN	2308	06	BALTIMORE	39 21	76 39W	235	08	08		H
DALECARLIA RSVR	2325	04	DISTRICT OF COLUMBIA	38 56	77 7W	150	08	08		H
DAMASCUS 3 SSW	2336	06	MONTGOMERY	39 16	77 14W	700	22	22		H
EMMITSBURG 2 SE	2906	06	FREDERICK	39 41	77 17W	403	07	07		H
FREDERICK 2 NNE	3353	06	FREDERICK	39 26	77 24W	280	07	07		H
FROSTBURG 2	3415	07	ALLEGANY	39 40	78 56W	2170	07	07		H
LAUREL 3 W	5111	04	PRINCE GEORGE'S	39 5	76 54W	400	24	24		H
MARYLAND SCIENCE CENTER R	5718	04	BALTIMORE (CITY)	39 17	76 37W	20	24	24		H
MECHANICSVILLE 5 NE	5865	03	ST. MARY'S	38 28	76 42W	100	07	07		H
MILLERS 4 NE	5934	06	CARROLL	39 43	76 48W	860	18	18		CH
NATL ARBORETUM DC	6350	04	DISTRICT OF COLUMBIA	38 55	76 58W	50	07	07		H
OAKLAND 1 SE	6620	08	GARRETT	39 25	79 24W	2420	07	07		H
OXON HILL	6800	04	PRINCE GEORGE'S	38 47	76 60W	120	08	08		H
PRINCESS ANNE	7330	01	SOMERSET	38 13	75 41W	20	17	17		H
ROYAL OAK 2 SSW	7806	02	TALBOT	38 43	76 11W	10	17	17		H
SALISBURY 2N	8004	01	WICOMICO	38 24	75 36W	20	17	17		H
SALISBURY FAA AP	8005	01	WICOMICO	38 20	75 31W	48	24	24		H
SAVAGE RIVER DAM	8065	08	GARRETT	39 31	79 8W	1495	08	08	08	CH
SHARPSBURG 5 S	8207	07	WASHINGTON	39 24	77 43W	500	07	07		H
SINES DEEP CREEK	8315	08	GARRETT	39 31	79 25W	2040	07	07		H
SMITHSBURG 2NW	8371	06	WASHINGTON	39 40	77 35W	670	08	08		H
SNOW HILL 4 N	8380	01	WORCESTER	38 14	75 23W	30	17	17		H
SOLOMONS	8405	03	CALVERT	38 19	76 27W	12	08	08		H
UPPER MARLBORO 3 NNW	9070	04	PRINCE GEORGE'S	38 51	76 46W	130	08	08	08	H
WILLIAMSPORT	9570	07	WASHINGTON	39 37	77 51W	360	06	06		H
DELAWARE										
DOVER	2730	02	KENT	39 9	75 30W	30	16	16		H
MILTON 1SE	6104	02	SUSSEX	38 46	75 17W	33	07	07		H
WILMINGTON NEW CASTLE CO AP R	9595	01	NEW CASTLE	39 40	75 36W	79	24	24		HJ
WILMINGTON PORTER RES	9605	01	NEW CASTLE	39 46	75 32W	270	24	24		H

REFERENCE NOTES

STATION NAMES: Name of the city, town or locality. Figures and letters following the station names indicate the distance in miles and direction from the post office or town community center.

DIVISIONS: Areas within a state of similar climatological characteristics. Division averages are calculated using data from stations that record temperature and/or precipitation. Station Precipitation totals flagged with an 'F' or 'M' are excluded from the Divisional Average calculations of precipitation. Stations with monthly Temperature averages flagged with an 'F' or 'M' are included in the Divisional Average if there are no more than 9 flagged or missing daily values in the month, else they are excluded from the divisional average for temperature.

NORMALS: The average value of the meteorological element over a time period. Effective 1 January 2012, the averaging period is 1981 to 2010. The normals for National Weather Service localities have been adjusted so as to be representative for the current observation site.

MONTHLY DEGREE DAY TOTALS: One heating (cooling) degree day is accumulated for each whole degree that the daily mean temperature is below (above) 65 degrees Fahrenheit.

PRECIPITATION: Values shown in hundredths of inches are water equivalent totals, i.e., total of liquid and melted frozen precipitation. In the "Monthly Summarized Data" table the total snow and sleet values shown in tenths of inches are unmelted amounts. The max depth on ground values of snow and sleet shown in whole inches are cumulative unmelted amounts. The number of days with .10, .50, 1.00 or more refers to water equivalents.

PRECIPITATION QUALITY CONTROL: The NCEI quality control process may flag precipitation data that are spatially inconsistent, exceed climatological limits, or are inconsistent with prevailing weather patterns.

TEMPERATURE: Original temperature values are given in the "Daily Temperature" table. Summary temperature information (averages, departures, extremes, monthly degree day totals) is based on the values labeled MAX/MIN.

WIND: (As shown in the "Evaporation and Wind" table) the total wind movement in miles over the evaporation pan as determined by an anemometer recorder located 6-8 inches above the pan.

SYMBOLS AND LETTERS USED IN THE STATION INDEX TABLE

C Station is equipped with recording rain gage (R) but values in this bulletin are from a non-recording rain gage unless indicated by an R.

G Observations appear in the "Soil Temperatures" table.

H Observations appear in the "Snowfall and Snow on the Ground" table.

J Station also published as a Local Climatological Data publication.

VAR Observation time varies.

SR / SS Observation time near sunrise / Observation time near sunset, respectively.

SYMBOLS AND LETTERS USED IN THE DATA TABLES

(DAILY DATA ARE FOR THE 24 HOURS IMMEDIATELY PRECEDING OBSERVATION TIME.)

BLANK Entries in the "Monthly Summarized Data" table indicate no record.

BLANK Entries in the "Daily Precipitation" and "Snowfall and Snow on the Ground" tables indicate zero.

BLANK Entries in the "Daily Temperature" table indicate a missing record

- No record. Data not recorded or not received in time for publication.

+ Precipitation or temperature extremes occurred on one or more previous dates during the month.

* Rain gage not read. Precipitation is included in the amount following the asterisks.

Time distribution may not be known. A * preceding the monthly total indicates precipitation amount is being carried forward to next month's total, and may include amounts from the previous month(s).

a As a subscript, indicates accumulated total.

A Amount of precipitation is the total of observer's entries for the current month. It may include precipitation that occurred during the previous month. Refer to earlier bulletin to determine date of last reading. (Hawaii stations)

B Divisional Departure from normals are computed using 1981-2010 normals.

E Normalized HDD/CDD Calculation. E is appended to the HDD/CDD Calculation when 1-9 individual daily

and/or TMIN values are missing and a Normalized HDD/CDD Calculation is provided. M appears alone if 10 or more daily values are missing.

F Monthly calculation flagged value. F is appended to average and/or total values computed which exclude one or more daily data values that have been flagged by the GHCN-Daily Dataset

M Insufficient or partial data. M is appended to average and/or total values computed with 1-9 daily values missing. M appears alone if 10 or more daily values are missing, (8 or more for wind and evaporation).

N Indicates snow fall or Snowdepth totals are computed with one or more missing days.

R Amounts from recording rain gage.

T Trace. An amount too small to measure.

SEASONAL TABLES: Monthly and seasonal snowfall and heating degree days for the 12 months ending with the June data are published in the July issue of this bulletin. Cooling degree days for the calendar year are published in the "Climatological Data Annual Summary."

Information concerning the history of changes in locations, exposure, etc. of substations is kept on file at the National Centers for Environmental Information. Historical information of regular National Weather Service Offices may be obtained from the "Local Climatological Data" annual publication. The contents of this publication may be reprinted or otherwise used freely, with proper credit to the National Centers For Environmental Information. The data are also available digitally.

Effective with the January 2011 Data-Month, COOP Observer Names are no longer included in the Monthly and Annual Climatological Data Publications. This information is not published to ensure the privacy of personal information pursuant to Section 208 of the E-Government Act of 2002 (44 USC 3601).

As of the 2011 Data-Year, Station and Climate Division Maps are no longer being included in the CD Publications. NCEI's Products Branch provides updated Station Maps for various data networks via the Historical Observing Metadata Repository: <http://www.ncdc.noaa.gov/homr>.

The GHCN-Daily Quality Control Flags shown below are displayed as superscripts with the data. For more Information on Global Historical Climatology Network - Daily and flags, see: <http://www.ncdc.noaa.gov/oa/climate/ghcn-daily/> and Comprehensive Automated Quality Assurance of Daily Surface Observations. Durre, Imke, Matthew J. Menne, Byron E. Gleason, Tamara G. Houston, Russell S. Vose, 2010: J. Appl. Meteor. Climatol., 49, 16151633. doi: 10.1175/2010JAMC2375.1

Blank = Passed All checks

D = failed duplicate check

G = failed gap check

I = failed internal consistency check

K = failed streak/frequent-value check

L = failed check on length of multiday period

M = failed megaconsistency check

N = failed naught check

O = failed climatological outlier check

R = failed lagged range check

S = failed spatial consistency check

T = failed temporal consistency check

W = temperature too warm for snow

X = failed bounds check

Z = flagged as a result of an official Datzilla investigation

Beginning with the January 2013 CD Publication, monthly mean temperature calculations have changed to the National Data Stewardship Team standard. Monthly maximum and minimum temperatures are not rounded until after the monthly mean temperature is calculated. This is the most accurate outcome, but may be slightly different from the mean derived from rounded monthly maximum and minimum.

Processing Updates and Errata: The CD Publications are periodically reproduced to include the addition of late reports and reported corrections. The GHCND data version noted on the cover of the publication provides the generation date.

The climate division temperature and precipitation values in this publication are based on simple averages from the current set of NWS-Designated Open and Published COOP and First Order Sites within each division. These values differ from those found in NCEI's nClimDiv product. Beginning in February 2014, the nClimDiv product is used by NCEI's Monitoring Branch and in its monthly climate reports. For more details on nClimDiv, please go to <http://www.ncdc.noaa.gov/monitoring-references/maps/us-climate-divisions.php>.

These and other publications are available from the National Centers for Environmental Information

Hourly Precipitation Data

This publication contains hourly precipitation amounts obtained from recording rain gages located at National Weather Service, Federal Aviation Administration, and cooperative observer stations. Published data are displayed in inches and tenths or inches and hundredths at local standard time. HPD includes maximum precipitation for nine (9) time periods from 15 minutes to 24 hours, for selected stations.

Climatological Data

Monthly editions contain station daily maximum and minimum temperatures and precipitation. Some Stations provide daily snowfall, snow depth, evaporation, and soil temperature data. Each edition also contains monthly summaries for heating and cooling degree days (65 degree F base). The July issue contains a recap of monthly heating degree days and snow data for the preceding July through June.

The Annual issue contains monthly and annual averages of temperature, precipitation, temperature extremes, freeze data, soil temperatures, evaporation, and a recap of monthly cooling degree days.

Storm Data

Monthly issues contain a chronological listing, by states, of occurrences of storms and unusual weather phenomena. Reports contain information on storm paths, deaths, injuries, and property damage. An "Outstanding storms of the month" section highlights severe weather events with photographs, illustrations, and narratives. The December issue includes annual tornado, lightning, flash flood, and tropical cyclone summaries.

Monthly Climatic Data for the World

This publication contains monthly means for temperature, pressure, precipitation, vapor pressure, and sunshine for approximately 2,000 surface data collection stations worldwide and monthly mean upper air temperatures, dew point depressions, and wind velocities for approximately 500 observing sites.

Local Climatological Data

LCD publications summarize temperature, relative humidity, precipitation, cloudiness, wind speed and direction observations for several hundred cities in the U.S. and its territories. Each monthly publication also contains 3 hourly weather observations for that month and a hourly summary of precipitation. Annual LCD publications contain a summary of the past calendar year as well as historical averages and extremes.

For Information Call:

(828) 271-4800 Option 2

(828) 271-4010 (TDD)

(828) 271-4876 (Fax)

NOAA National Centers for Environmental Information
Attn: Customer Engagement Branch
151 Patton Avenue
Asheville, NC 28801-5001

Customer Services Number: (828) 271-4800, option 2
TDD : (828) 271-4010
Fax number: (828) 271-4876

NCEI now offers free online access to the *Climatological Data* publication.
Go to : www.ncdc.noaa.gov and choose Most Popular.