



CLIMATOLOGICAL DATA

MARYLAND AND DELAWARE

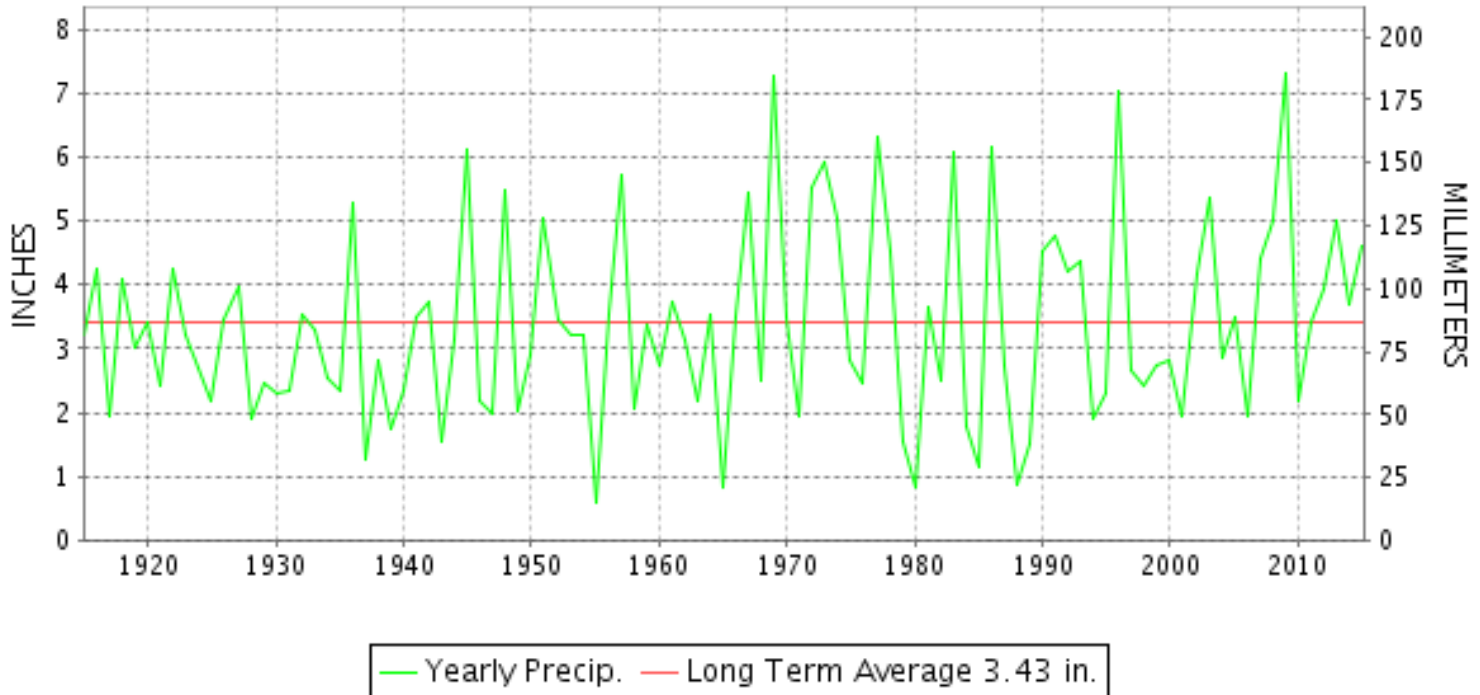
DECEMBER 2015

VOLUME 119 NUMBER 12

ISSN 0145-0549

GHCND Ver: 3.22-upd-2016033005

DECEMBER PRECIPITATION BY YEAR



TEMPERATURE AND PRECIPITATION EXTREMES

MARYLAND

HIGHEST TEMPERATURE	78	DECEMBER 25	SNOW HILL 4 N
LOWEST TEMPERATURE	15	DECEMBER 21	SINES DEEP CREEK
GREATEST TOTAL PRECIPITATION	6.63		ABERDEEN PHILLIPS FLD
LEAST TOTAL PRECIPITATION	2.80		SAVAGE RIVER DAM
GREATEST 1 DAY PRECIPITATION	2.33	DECEMBER 24	MECHANICSVILLE 5 NE
GREATEST TOTAL SNOWFALL	2.4		OAKLAND 1 SE
GREATEST DEPTH OF SNOW OR ICE	2		OAKLAND 1 SE

"I certify that this is an official publication of the National Oceanic and Atmospheric Administration (NOAA) It is compiled using information from weather observing sites supervised by NOAA/National Weather Service and received at the National Centers for Environmental Information(NCEI), Asheville, North Carolina 28801."

Director
National Centers for Environmental Information

noaa

National
Oceanic and
Atmospheric Administration

National
Environmental Satellite, Data
and Information Service

National
Centers for Environmental Information
Asheville, North Carolina

DELAWARE

HIGHEST TEMPERATURE	72
LOWEST TEMPERATURE	26
GREATEST TOTAL PRECIPITATION	5.21
LEAST TOTAL PRECIPITATION	4.38
GREATEST 1 DAY PRECIPITATION	1.16
GREATEST TOTAL SNOWFALL	T

DECEMBER 25+
DECEMBER 20+

DECEMBER 23

DOVER
2 STATIONS
WILMINGTON NEW CASTLE CO AP
DOVER
WILMINGTON NEW CASTLE CO AP
WILMINGTON NEW CASTLE CO AP

MONTHLY STATION AND DIVISION SUMMARY

STATION	TEMPERATURE (°F)											PRECIPITATION (IN)												
	AVERAGE MAXIMUM	AVERAGE MINIMUM	AVERAGE	DEPARTURE FROM NORMAL	HIGHEST	DATE	LOWEST	DATE	HEATING DEG. DAYS	COOLING DEG. DAYS	NO. OF DAYS				TOTAL	DEPARTURE FROM NORMAL	GREATEST 24 HOURS	DATE	ICE PELLETS, SNOW			NO. OF DAYS		
											MAX		MIN						TOTAL	MAX DEPTH ON GROUND	DATE	.10 OR MORE	.50 OR MORE	1.00 OR MORE
											>=90	<=32	<=32	<=0										
MILLERS 4 NE	54.7	39.5	47.1	12.9	69	13+	23	20	546	0	0	0	7	0	4.55	0.91	1.21	23	T	0		10	3	1
SMITHSBURG 2NW	51.5M	35.2M	43.4M	9.9	68	28+	21	21	665E	0	0	0	10	0	M 3.91	0.56	0.90	29	M			11	1	0
--DIVISIONAL DATA----->			46.8	11.0B										5.49	1.99B									
APPALACHIAN MOUNTAIN 07																								
CUMBERLAND 2	53.7	36.6	45.1	9.5	72	28	25	21+	608	0	0	0	10	0	3.44	0.59	0.75	29	M	M T	19	9	2	0
FROSTBURG 2	50.1	34.8	42.5	12.6	69	28	19	21	688	0	0	2	14	0	3.67	0.38	0.63	02	M	M T	20	11	3	0
SHARPSBURG 5 S	54.7M	35.1M	44.9M	11.3	73	13	20	21+	618E	0	0	0	12	0	M 3.38	0.23	0.89	29	M			8	1	0
WILLIAMSPORT															M 2.24	-0.86	0.38	24	M	0		6	0	0
--DIVISIONAL DATA----->			44.2	10.7B										3.56	0.69B									
ALLEGHENY PLATEAU 08																								
OAKLAND 1 SE	54.0	32.6	43.3	13.5	68	28	18	20	667	0	0	3	17	0	4.75	0.90	1.01	24	2.4	2	19	11	2	1
SAVAGE RIVER DAM	50.4	35.1	42.7	11.4	69	28	22	21	683	0	0	0	12	0	2.80	0.00	0.57	02	M	M T	19	9	2	0
SINES DEEP CREEK	M	M	M		64	14	15	21	744E	0	0	1	13	0	MA 4.02		0.85	02	M			12	2	0
--DIVISIONAL DATA----->			43.0	12.6B										3.78	0.20B									
DELAWARE NORTHERN 01																								
WILMINGTON NEW CASTLE CO AP	57.1	41.6	49.4	12.7	71	24	28	20+	477	1	0	0	7	0	5.21	1.73	1.16	23	T	0		10	5	2
WILMINGTON PORTER RSCH	57.6	42.7	50.1	13.9	71	24	26	20	455	1	0	0	2	0	5.11	1.01	1.06	23	M 0.0	0		10	4	1
--DIVISIONAL DATA----->			49.8	13.2B										5.16	1.54B									
SOUTHERN 02																								
DOVER	59.9	44.1	52.0	12.8	72	25+	26	20+	401	4	0	0	6	0	4.38	0.73	0.83	01	0.0	0		10	5	0
FRANKFORD															M				M					
--DIVISIONAL DATA----->			52.0	13.0B										4.38	0.84B									

DAILY PRECIPITATION (INCHES)

STATION	TOTAL	DAY OF MONTH																																
		01	02	03	04	05	06	07	08	09	10	11	12	13	14	15	16	17	18	19	20	21	22	23	24	25	26	27	28	29	30	31		
MARYLAND																																		
SOUTHERN																																		
EASTERN SHORE 01																																		
ASSATEAGUE	M	-	-	-	-	-	-	-	-	-	-	-	-	-	-	-	-	-	-	-	-	-	-	-	-	-	-	-	-	-	-	-	-	-
PRINCESS ANNE	MA 5.22	0.51	0.48													0.75	0.55	-	-	-	*	*	*	*	*	*	*	*	*	*	*	*	*	2.93 _a
SALISBURY 2N	5.22	0.58	0.06	0.05											0.05	1.10	0.10		0.01			0.85	0.84	1.05	0.06	0.03		0.05	0.30	0.02	0.07			
SALISBURY FAA AP	4.49	0.45	0.50	0.01				T						T		0.65	0.03					0.88	0.83	0.76	0.03		0.02	0.02	0.24	0.02	0.05			
SNOW HILL 4 N	4.70	0.73	0.04	0.11					0.10		0.06				0.03	0.60	0.31					0.56	0.62	0.83	0.02		0.02		0.62	T	0.05			
CENTRAL																																		
EASTERN SHORE 02																																		
ROYAL OAK 2 SSW	5.20	0.78	0.20	0.06							0.03				0.03		0.79						0.30	0.70	0.66	1.00	0.05		0.05	0.45	T	0.10		
LOWER SOUTHERN 03																																		
MECHANICSVILLE 5 NE	5.73	0.69	0.54	0.19											0.01		0.46	T				T	0.22	2.33	0.44	0.11	0.01		0.66	0.01	0.06			
SOLOMONS	A* 4.10	0.43	0.06			*	0.04 _a						*	0.00 _a	0.07	0.03	0.45	T		0.24	0.40	1.45	*	0.50 _a		0.02	0.31	0.02	0.08		-			
UPPER SOUTHERN 04																																		
BALTIMORE WASH INTL AP	5.85	0.81	0.20												0.13	0.01	0.51		T		T	0.11	2.01	0.05	1.08	0.06	0.01	0.18	0.65	0.04				
BELTSVILLE	4.36	0.35	0.52	0.10											0.10	0.01	0.43					0.09	0.01	1.04	0.02	0.70	0.04	0.10	0.81	T	0.04			
DALECARLIA RSVR	4.63	0.60	0.57	0.20											0.15		0.48					0.12	0.05	0.90	0.05	0.60	0.02		0.81	0.03	0.05			
MARYLAND SCIENCE CENTER	6.24	0.83	0.10											0.10	0.05	0.51					0.09	1.73	0.03	1.96	0.02		0.17	0.60	0.05					
NATL ARBORETUM DC	5.30	0.41	0.62	0.17											0.13	0.06	0.40				0.16	0.02	1.79	0.10	0.41	0.02		0.91	0.02	0.08				
OXON HILL	4.57	0.43	0.62	0.20							T				0.09	0.01	0.35				0.10	0.08	1.44	0.10	0.26	0.01	0.06	0.64	0.02	0.16				
UPPER MARLBORO 3 NNW	4.16	0.48	0.58	0.23	0.01										0.16	0.32					0.10	0.11	1.01	0.08	0.26	0.02	0.09	0.56	0.02	0.13				
NORTHERN																																		
EASTERN SHORE 05																																		
SUDLERSVILLE 1S	4.98	0.76	0.20												0.10	0.05	0.92					0.10	1.70		0.25	0.15			0.70	0.05				
NORTHERN CENTRAL 06																																		
ABERDEEN PHILLIPS FLD	A 6.63	0.18	0.92	0.20											0.23		T	0.66				0.06	0.10	1.82	*	*	*	1.50 _a	0.83	0.05	0.08			
BRIGHTON DAM	6.23	0.32	0.95	0.30												0.30	0.45				0.17	0.19	0.85		1.55	0.05		0.05	0.05	0.80	0.25			
CONOWINGO DAM	4.89		0.29	0.92												0.34				0.68					1.40		0.64			0.62				
CYLBURN	A 5.72	0.80	*	1.00 _a							0.02				0.10		T	0.55				0.07		1.04	*	1.23 _a		0.77	0.04	0.10				
DAMASCUS 3 SSW	5.65	0.84	0.29								0.05				0.12	0.50		T			0.01	0.20	1.10	0.08	1.58	T	0.03	0.02	0.75	0.06	T			
EMMITSBURG 2 SE	4.76	0.39	0.57	0.30							0.04	T			0.26	0.08	0.39					0.13	0.02	1.11		0.26	0.04	T	1.04	0.01	0.12			
FREDERICK 2 NNE	M	-	-	-	-	-	-	-	-	-	-	-	-	-	-	-	-	-	-	-	-	-	-	-	-	-	-	-	-	-	-	-	-	
MILLERS 4 NE	4.55	0.92	0.25	T							0.07				0.13	0.36	T	T				0.13	1.21	0.11	0.22	0.02	0.07	0.13	0.83	0.01	0.05			
SMITHSBURG 2NW	M 3.91	0.44	0.35	0.35							0.10				0.03	0.07							0.24	0.33	0.05	0.30	0.11	0.06	0.90	0.10	0.08			
APPALACHIAN																																		
MOUNTAIN 07																																		
CUMBERLAND 2	3.44	0.20	0.60	0.41							0.02				0.06			0.27	T			0.20	0.01	0.35	0.02	0.37	0.13	0.03	0.75		0.02			
FROSTBURG 2	3.67	0.20	0.63	0.49							T		0.01		0.17		T	0.27	T			0.19	0.15	0.28	T	T	0.62	0.13	0.52	T	0.01			
SHARPSBURG 5 S	M 3.38	0.40	0.38	0.27							0.05				0.03	0.05	0.32					0.21	0.01	0.30		0.45	0.02	0.89	-	-				
WILLIAMSPORT	M 2.24	0.25	0.37	0.01	0.02	-	-	-	-		0.06		0.01		0.04		0.37					0.20	0.05	0.38	0.03	0.31	0.06	0.01	-	0.03	0.04			
ALLEGHENY PLATEAU 08																																		

DAILY PRECIPITATION (INCHES)

STATION	TOTAL	DAY OF MONTH																														
		01	02	03	04	05	06	07	08	09	10	11	12	13	14	15	16	17	18	19	20	21	22	23	24	25	26	27	28	29	30	31
OAKLAND 1 SE	4.75	0.12	0.68	0.38				0.08		0.04	0.02	0.02			0.26	0.06	0.08	0.34	0.05				0.32	0.16	1.01	0.03	0.30	0.05	0.34	0.35		0.06
SAVAGE RIVER DAM	2.80	0.16	0.57	0.43								T			0.11			0.25	T				0.13	T	0.17	T	0.35	0.07	0.06	0.50		
SINES DEEP CREEK	MA 4.02	0.10	0.85	0.64		*	*	*	0.04 _a		0.05	*	*	0.00 _a	0.35	0.07		0.33	*	*	0.05 _a	0.25	0.11	0.10	0.22	0.22	0.32	0.25		-	0.07	
DELAWARE																																
NORTHERN 01																																
WILMINGTON NEW CASTLE CO AP	5.21	1.04	0.22											0.11	0.08		0.85	T	T				0.10	1.16	0.10	0.54	T	0.08	0.04	0.75	0.14	
WILMINGTON PORTER RSCH	5.11	0.84	0.10											0.16	0.07		0.99	T		T			0.20	1.06	0.20	0.46			0.05	0.86	0.12	
SOUTHERN 02																																
DOVER	4.38	0.83	0.19	0.08											0.04		0.61	0.02				0.19	0.52	0.42	0.54	0.21			0.54		0.19	
FRANKFORD	M	-	-	-	-	-	-	-	-	-	-	-	-	-	-	-	-	-	-	-	-	-	-	-	-	-	-	-	-	-	-	

DAILY TEMPERATURES (°F)

STATION	OB. TIME	MAX/MIN	DAY OF MONTH																															AVERAGE	
			01	02	03	04	05	06	07	08	09	10	11	12	13	14	15	16	17	18	19	20	21	22	23	24	25	26	27	28	29	30	31		
			MARYLAND SOUTHERN EASTERN SHORE 01 ASSATEAGUE	VA	MAX MIN																														
PRINCESS ANNE	17	MAX MIN	56 43	59 42	57 40	54 30			55 28	53 30	60 30	65 38	66 39			73 54	69 45	65 36	62 38																M M M
SALISBURY 2N	17	MAX MIN	60 52	61 54	43 43	57 33	59 29	55 28	49 32	53 33	61 32	65 43	65 44	73 45	71 50	74 56	58 37	63 42	57 43	43 30	46 25	60 32	63 54	65 59	72 65	75 66	69 55	72 54	69 44	64 47	56 47	61 51	62.3 44.6		
SALISBURY FAA AP	24	MAX MIN	59 53	62 54	54 40	52 32	53 29	56 27	54 29	53 30	60 29	65 38	65 38	72 41	70 48	73 54	69 45	58 36	62 38	54 36	43 25	47 31	60 56	64 58	70 64	71 75	66 66	72 53	59 54	64 45	60 45	60 44	61.4 42.3		
SNOW HILL 4 N	17	MAX MIN	62 52	65 53	63 41	48 30	55 27	59 24	55 29	54 31	61 28	68 41	67 38	74 44	73 48	75 51	70 58	62 34	63 55	61 42	45 29	49 21	63 27	67 52	65 55	69 62	78 66	70 57	73 54	70 45	69 47	58 48	61 42	63.6 42.9	
CENTRAL EASTERN SHORE 02 ROYAL OAK 2 SSW	17	MAX MIN	54 45	58 51	59 45	50 40	51 31	53 28	51 33	58 32	59 32	63 40	65 40	70 42	69 47	71 55	67 51	60 39	64 43	53 41	44 30	45 32	57 36	61 51	67 55	68 58	69 62	66 54	68 51	68 44	55 44	55 46	59.8 43.4		
LOWER SOUTHERN 03 MECHANICSVILLE 5 NE	07	MAX MIN	46 39	54 40	59 40	50 30	51 28	52 26	54 26	56 26	54 31	57 31	62 36	67 42	70 43	72 50	72 54	64 34	56 34	54 44	45 26	44 23	47 23	57 30	61 54	70 56	68 64	70 58	58 51	72 44	49 44	55 45	52 47	58.0 39.3	
SOLOMONS	08	MAX MIN	55 45	60 44	60 39	50 36	52 34	51 41	52 42	57 48	60 46	68 48			68 50	69 57	62 44	56 49	53 44	45 32	48 32	59 48	62 54	70 54			73 54		70 51	52 ¹ 44	58 44	55 51	54 34	58.7 44.7	
UPPER SOUTHERN 04 BALTIMORE WASH INTL AP	24	MAX MIN	51 44	57 47	52 37	51 31	52 27	55 24	58 28	52 29	53 31	61 36	64 36	71 40	72 49	71 52	67 35	55 37	52 37	51 34	42 26	47 21	58 32	59 50	68 55	71 61	71 58	60 50	69 49	53 40	55 43	52 47	57 42	58.3 39.7	
BELTSVILLE	08	MAX MIN	47 39	49 47	57 40	48 28	50 26	54 28	53 30	58 31	53 35	48 35	64 35	64 41	70 47	71 52	60 36	57 38	52 43	44 28	42 26	46 27	47 41	57 50	60 57	67 61	70 56	71 50	57 42	69 40	46 46	52 48	54 48	56.8 39.7	
DALECARLIA RSVR	08	MAX MIN	44 38	50 42	57 40	48 32	48 29	55 30	57 42	57 30	54 31	63 37	63 38	64 41	46 ^S 43	71 46	70 56	60 37	57 40	52 42	45 28	52 26	48 27	58 41	60 50	67 57	72 60	69 55	57 50	70 41	45 39	52 39	54 48	57.3 40.5	
MARYLAND SCIENCE CENTER	24	MAX MIN	52 45	58 48	54 40	52 38	51 39	54 35	57 39	51 40	54 39	62 44	62 44	65 47	68 51	67 54	56 47	54 47	53 48	43 36	47 32	59 31	60 51	65 56	73 62	67 60	62 50	70 50	53 41	56 43	53 47	55 43	58.1 44.6		
NATL ARBORETUM DC	07	MAX MIN	53 38	59 53	64 42	50 35	51 30			59 33	55 33	61 39	62 38	66 40	70 44	73 51	61 55	58 42	59 45	47 30	45 27	46 28	59 41	64 53	72 67	73 60	75 60	71 51	70 43	52 40	55 48	56 49	60.3 43.3		
OXON HILL	08	MAX MIN	46 40	52 45	58 41	50 31	51 31	53 30	52 30	57 33	54 38	62 38	62 40	70 42	71 46	73 52	70 57	61 38	58 39	53 45	51 29	44 29	46 30	57 40	68 53	70 58	67 65	70 60	62 51	68 43	47 41	52 47	53 48	57.6 42.3	
UPPER MARLBORO 3 NNW	08	MAX MIN	46 38	49 46	58 41	49 31	53 27	55 25	57 25	60 28	54 29	56 30	65 37	68 37	74 40	73 48	71 56	62 35	59 37	46 45	45 30	48 23	58 23	61 40	69 54	70 63	71 58	58 50	70 43	47 40	53 46	53 49	58.4 39.7		
NORTHERN CENTRAL 06 ABERDEEN PHILLIPS FLD	07	MAX MIN	50 37	54 48	56 45	50 33	52 31	50 27	51 28	57 30	50 34	56 37	61 37	60 37	65 40	67 47	70 51	61 45	52 45	47 44	41 30	42 24	55 42	58 55	65 55	67 59	64 54	55 49	64 40	46 41	54 46	52 47	55.6 40.7		
BRIGHTON DAM	08	MAX MIN	50 47	65 47	55 47	46 25	48 24	49 27	57 35	63 35	49 30	58 33	64 33	70 41	70 45	69 39	70 37	53 39	51 40	43 27	40 23	54 25	58 39	64 50	64 56		70 53	54 49	54 49	48 40	54 40	56.9 37.5			

DAILY TEMPERATURES (°F)

STATION	OB. TIME	MAX/MIN	DAY OF MONTH																															AVERAGE	
			01	02	03	04	05	06	07	08	09	10	11	12	13	14	15	16	17	18	19	20	21	22	23	24	25	26	27	28	29	30	31		
CONOWINGO DAM	07	MAX	48	48	53	54	46	47	45	47	50	45	51	50	54	58	57	62	57	50	51	44	39	40	51	54	62	63	61	51	61	46	49	51.4	
		MIN	34	34	47	38	32	28	29	31	32	30	30	36	36	40	46	50	45	43	41	30	25	24	32	49	53	52	48	47	39	38	44	38.2	
CYLBURN	08	MAX	55	60	68	57	52	50	55	56	50	52	61	62	67	70	70	66	54	57	48	40	45	56	63			70		55	66	65	58.1		
		MIN	41	55	52	39	31	29	29	32	33	33	33	40	46	55	57	44	46	46	29	26	26	45	51	63		64	49	44	54	61	43.2		
DAMASCUS 3 SSW	22	MAX	46	54	48	47	48	51	53	48	43	58	59	69	68	66	65	53	51	48	39	42	54	57	63	68	66	59	65	56	47	50	54.6		
		MIN	38	43	33	33	29	29	33	31	34	39	44	47	56	57	45	39	40	31	26	24	34	48	54	61	59	48	48	36	36	41	40.5		
EMMITSBURG 2 SE	07	MAX	41	45	52	49	51	49	51	56	46	44	58	59	67	68	66	62	51	50	46	40	44	50	58	63	70	63	57	66	49	50	53.9		
		MIN	33	39	39	36	25	23	23	26	27	27	34	33	38	47	50	46	37	37	29	25	25	34	48	50	51	50	49	37	37	43	36.6		
FREDERICK 2 NNE	07	MAX																															M		
		MIN																																M	
MILLERS 4 NE	18	MAX	49	53	52	49	48	52	54	46	46	59	60	69	69	64	65	49	51	50	38	40	48	59	60	67	66	59	67	63	47	48	54.7		
		MIN	37	44	36	33	26	26	30	29	33	39	40	43	55	54	46	40	41	35	25	23	31	48	52	59	57	48	46	34	35	42	39.5		
SMITHSBURG 2NW	08	MAX	38	42	51	42	47	45	47	49	47	46	54	60	67	68	65	52	49	50		36	41	54	59	64	67		52	68	40	44	51.5		
		MIN	31	37	37	31	23	23	23	24	25	26	36	37	47	50	50	43	40	34		22	21	34	34	53	50		46	36	36	36	35.2		
APPALACHIAN MOUNTAIN 07																																			
CUMBERLAND 2	18	MAX	39	44	52	44	54	55	48	54	59	48	63	64	68	69	61	51	56	48	40	38	47	45	58	52	68	58	51	72	43	59	53.7		
		MIN	37	37	36	37	26	25	25	27	29	30	36	40	45	46	46	44	39	38	28	25	25	32	41	44	46	46	46	38	38	38	36.6		
FROSTBURG 2	07	MAX	33	46	48	34	43	47	54	51	48	46	56	58	67	65	61	44	47	48	31	29	40	54	59	56	61	63	53	69	35	57	50.1		
		MIN	30	33	30	29	26	26	27	33	29	29	39	48	50	47	42	38	37	31	20	20	19	33	46	47	48	46	41	32	31	33	34.8		
SHARPSBURG 5 S	07	MAX	37	43	52	46	52	50	51	54	52	45	60	64	73	71	67	57	54	53	41	39	46	51	62	67	71	63	51	72	41		54.7		
		MIN	35	37	32	31	24	23	22	24	26	26	36	36	43	49	51	37	39	36	22	20	20	31	43	55	48	47	48	39	37		35.1		
ALLEGHENY PLATEAU 08																																			
OAKLAND 1 SE	07	MAX	39	55	56	32	45	56	60	54	50	56	58	59	67	67	65	43	54	53	31	30	45	56	59	65	64	61	64	68	39	60	54.0		
		MIN	32	37	30	30	20	20	22	23	24	24	37	43	47	40	40	32	32	31	19	18	28	31	31	51	40	39	45	35	33	37	32.6		
SAVAGE RIVER DAM	08	MAX	34	42	51	37	44	46	52	51	48	48	55	60	68	64	61	48	50	49	36	33	41	50	57	53	63	56	49	69	38	58	50.4		
		MIN	32	34	34	30	26	26	26	29	28	28	37	40	46	44	43	41	41	36	25	24	22	31	42	42	43	44	43	38	34	35	35.1		
SINES DEEP CREEK	07	MAX	40	46	50	32																												M	
		MIN	32	32	30	30																													M
DELAWARE NORTHERN 01																																			
WILMINGTON NEW CASTLE CO AP	24	MAX	56	58	52	51	51	53	57	51	55	61	62	68	67	69	68	51	55	53	42	43	55	60	63	71	67	60	65	48	54	57.1			
		MIN	45	50	37	34	29	28	29	31	32	42	37	43	48	49	46	46	43	36	30	28	36	52	56	60	58	49	48	38	42	47	41.6		
WILMINGTON PORTER RSCH	24	MAX	59	60	60	48	48	50	53	47	54	57	58	67	69	68	67	67	57	55	36	40	52	61	69	71	69	64	65	53	56	53	57.6		
		MIN	48	54	38	34	36	34	34	35	34	44	42	46	52	53	46	45	45	36	30	26	33	33	58	58	63	48	49	40	43	47	42.7		
SOUTHERN 02																																			
DOVER	16	MAX	57	58	58	51	51	55	50	51	59	64	67	72	72	72	68	57	56	54	42	45	62	63	62	72	72	63	69	68	58	59.9			
		MIN	47	53	44	35	31	26	32	33	28	44	42	54	54	58	56	40	43	40	31	26	36	55	53	60	63	52	50	41	44	45	44.1		

SNOWFALL AND SNOW ON GROUND (INCHES)

STATION	DAY OF MONTH																																
	01	02	03	04	05	06	07	08	09	10	11	12	13	14	15	16	17	18	19	20	21	22	23	24	25	26	27	28	29	30	31		
MARYLAND SOUTHERN EASTERN SHORE 01																																	
ASSATEAGUE	SNOWFALL																																
PRINCESS ANNE	SNOWFALL																																
SALISBURY 2N	SNOWFALL																																
SALISBURY FAA AP	SNOWFALL																																
	SN ON GND																																
SNOW HILL 4 N	SNOWFALL																																
UPPER SOUTHERN 04																																	
BALTIMORE WASH INTL AP	SNOWFALL																																
	SN ON GND																																
BELTSVILLE	SNOWFALL																																
	SN ON GND																																
DALECARLIA RSVR	SNOWFALL																																
	SN ON GND																																
	WTR EQUIV																																
MARYLAND SCIENCE CENTER	SNOWFALL																																
NATL ARBORETUM DC	SNOWFALL	-	-	-	-	-	-	-	-	-	-	-	-	-	-	-	-	-	-	-	-	-	-	-	-	-	-	-	-	-	-	-	
	SN ON GND	-	-	-	-	-	-	-	-	-	-	-	-	-	-	-	-	-	-	-	-	-	-	-	-	-	-	-	-	-	-	-	
	WTR EQUIV	-	-	-	-	-	-	-	-	-	-	-	-	-	-	-	-	-	-	-	-	-	-	-	-	-	-	-	-	-	-	-	
OXON HILL	SNOWFALL																																
	SN ON GND																																
UPPER MARLBORO 3 NNW	SNOWFALL																																
NORTHERN CENTRAL 06																																	
DAMASCUS 3 SSW	SNOWFALL																																
	SN ON GND																																
EMMITSBURG 2 SE	SNOWFALL																																
	SN ON GND																																
	WTR EQUIV																																
FREDERICK 2 NNE	SNOWFALL																																
MILLERS 4 NE	SNOWFALL																																
	SN ON GND																																
	WTR EQUIV																																
SMITHSBURG 2NW	SNOWFALL																																
APPALACHIAN MOUNTAIN 07																																	
CUMBERLAND 2	SNOWFALL	-	-	-	-	-	-	-	-	-	-	-	-	-	-	-	-	-	-	-	-	-	-	-	-	-	-	-	-	-	-	-	
	SN ON GND	-	-	-	-	-	-	-	-	-	-	-	-	-	-	-	-	-	-	-	-	-	-	-	-	-	-	-	-	-	-	-	
FROSTBURG 2	SNOWFALL	-	-	T	-	-	-	-	-	-	-	-	-	-	-	-	-	-	-	-	-	-	-	-	-	-	-	-	-	-	-	-	
	SN ON GND	-	-	T	-	-	-	-	-	-	-	-	-	-	-	-	-	-	-	-	-	-	-	-	-	-	-	-	-	-	-	-	
SHARPSBURG 5 S	SNOWFALL																																

Snowfall: Includes snow and ice. Values for NWS stations (J index note) are Mid-Mid (LST).

Snow on ground: Includes snow, sleet, ice, and hail. Values for NWS stations (J index note) are observed at 12 UTC (GMT).

Water Equivalent: Given for NWS stations (J index note) only, when snow depth is 2 inches or more, and is measured at 18 UTC (GMT)

SNOWFALL AND SNOW ON GROUND (INCHES)

STATION		DAY OF MONTH																															
		01	02	03	04	05	06	07	08	09	10	11	12	13	14	15	16	17	18	19	20	21	22	23	24	25	26	27	28	29	30	31	
WILLIAMSPORT	SNOWFALL	-	-		-	-	-	-	-	-						-	-								-					-	-	-	
	SN ON GND	-	-		-	-	-	-	-	-						-	-								-					-	-	-	
	WTR EQUIV	-	-		-	-	-	-	-	-						-	-								-					-	-	-	
ALLEGHENY PLATEAU 08																																	
OAKLAND 1 SE	SNOWFALL			0.4																		2.0											
	SN ON GND																					2											
SAVAGE RIVER DAM	SNOWFALL	-	-	-	-	-	-	-	-	-	-	-	-	-	-	-	-	-	-	T	-	-	-	-	-	-	-	-	-	-	-	-	
	SN ON GND	-	-	-	-	-	-	-	-	-	-	-	-	-	-	-	-	-	-	T	-	-	-	-	-	-	-	-	-	-	-	-	
SINES DEEP CREEK	SNOWFALL	-	-	-	-	-	-	-	-	-	-	-	-	-	-	-	-	-	-	-	-	0.5	-	-	-	-	-	-	-	-	-	-	
DELAWARE																																	
NORTHERN 01																																	
WILMINGTON NEW CASTLE CO AP	SNOWFALL																																
	SN ON GND																																
WILMINGTON PORTER RSCH	SNOWFALL																																-
	SN ON GND																																-

Snowfall: Includes snow and ice. Values for NWS stations (J index note) are Mid-Mid (LST).

Snow on ground: Includes snow, sleet, ice, and hail. Values for NWS stations (J index note) are observed at 12 UTC (GMT).

Water Equivalent: Given for NWS stations (J index note) only, when snow depth is 2 inches or more, and is measured at 18 UTC (GMT)

PAN EVAPORATION AND WIND

STATION		DAY OF MONTH																															TOTAL OR AVERAGE			
		01	02	03	04	05	06	07	08	09	10	11	12	13	14	15	16	17	18	19	20	21	22	23	24	25	26	27	28	29	30	31				
MARYLAND UPPER SOUTHERN 04 BELTSVILLE	WIND	-	-	-	-	-	-	-	-	-	-	-	-	-	-	-	-	-	-	-	-	-	-	-	-	-	-	-	-	-	-	-	-	-	M	
	EVAP	-	-	-	-	-	-	-	-	-	-	-	-	-	-	-	-	-	-	-	-	-	-	-	-	-	-	-	-	-	-	-	-	-	M	
	MAX	-	-	-	-	-	-	-	-	-	-	-	-	-	-	-	-	-	-	-	-	-	-	-	-	-	-	-	-	-	-	-	-	-	M	
	MIN	-	-	-	-	-	-	-	-	-	-	-	-	-	-	-	-	-	-	-	-	-	-	-	-	-	-	-	-	-	-	-	-	-	-	M
UPPER MARLBORO 3 NNW	WIND	-	-	-	-	-	-	-	-	-	-	-	-	-	-	-	-	-	-	-	-	-	-	-	-	-	-	-	-	-	-	-	-	-	M	
	EVAP	-	-	-	-	-	-	-	-	-	-	-	-	-	-	-	-	-	-	-	-	-	-	-	-	-	-	-	-	-	-	-	-	-	M	
	MAX	-	-	-	-	-	-	-	-	-	-	-	-	-	-	-	-	-	-	-	-	-	-	-	-	-	-	-	-	-	-	-	-	-	-	M
	MIN	-	-	-	-	-	-	-	-	-	-	-	-	-	-	-	-	-	-	-	-	-	-	-	-	-	-	-	-	-	-	-	-	-	-	M
ALLEGHENY PLATEAU 08 SAVAGE RIVER DAM	WIND	-	-	-	-	-	-	-	-	-	-	-	-	-	-	-	-	-	-	-	-	-	-	-	-	-	-	-	-	-	-	-	-	-	M	
	EVAP	-	-	-	-	-	-	-	-	-	-	-	-	-	-	-	-	-	-	-	-	-	-	-	-	-	-	-	-	-	-	-	-	-	-	M
	MAX	-	-	-	-	-	-	-	-	-	-	-	-	-	-	-	-	-	-	-	-	-	-	-	-	-	-	-	-	-	-	-	-	-	-	M
	MIN	-	-	-	-	-	-	-	-	-	-	-	-	-	-	-	-	-	-	-	-	-	-	-	-	-	-	-	-	-	-	-	-	-	-	M

Evaporation: Is measured in hundreths of inches.

Wind: Is measured in miles.

Max and Min: The maximum and minimum temperatures (Fahrenheit) of the water in the evaporation pan.

STATION INDEX

STATION	INDEX NO.	DIVISION	COUNTY	LATITUDE	LONGITUDE	ELEVATION (IN FEET)	OBSERVATION TIME AND TABLES			
							LOCAL STD TIME			
							TEMP	PRECIP	EVAP	SPECIAL SEE (NOTES)
MARYLAND										
ABERDEEN PHILLIPS FLD	0015	06	HARFORD	39 28	76 10W	57	07	07		CH
ASSATEAGUE	0335	01	WORCESTER	38 4	75 13W	10	VAR	VAR		H
BALTIMORE WASH INTL AP R	0465	04	ANNE ARUNDEL	39 10	76 41W	156	24	24		HJ
BELTSVILLE	0700	04	PRINCE GEORGE'S	39 2	76 56W	145	08	08	08	CH
BRIGHTON DAM	1125	06	MONTGOMERY	39 11	77 0W	330	08	08		H
CONOWINGO DAM	2060	06	HARFORD	39 39	76 11W	40	07	07		H
CUMBERLAND 2	2282	07	ALLEGANY	39 39	78 45W	730	18	18		H
CYLBURN	2308	06	BALTIMORE	39 21	76 39W	235	08	08		H
DALECARLIA RSVR	2325	04	DISTRICT OF COLUMBIA	38 56	77 7W	150	08	08		H
DAMASCUS 3 SSW	2336	06	MONTGOMERY	39 16	77 14W	700	22	22		H
EMMITSBURG 2 SE	2906	06	FREDERICK	39 41	77 17W	403	07	07		H
FREDERICK 2 NNE	3353	06	FREDERICK	39 26	77 24W	280	07	07		H
FROSTBURG 2	3415	07	ALLEGANY	39 40	78 56W	2170	07	07		H
MARYLAND SCIENCE CENTER R	5718	04	BALTIMORE (CITY)	39 17	76 37W	20	24	24		H
MECHANICSVILLE 5 NE	5865	03	ST. MARY'S	38 28	76 42W	100	07	07		H
MILLERS 4 NE	5934	06	CARROLL	39 43	76 48W	860	18	18		CH
NATL ARBORETUM DC	6350	04	DISTRICT OF COLUMBIA	38 55	76 58W	50	07	07		H
OAKLAND 1 SE	6620	08	GARRETT	39 25	79 24W	2420	07	07		H
OXON HILL	6800	04	PRINCE GEORGE'S	38 47	76 60W	120	08	08		H
PRINCESS ANNE	7330	01	SOMERSET	38 13	75 41W	20	17	17		H
ROYAL OAK 2 SSW	7806	02	TALBOT	38 43	76 11W	10	17	17		H
SALISBURY 2N	8004	01	WICOMICO	38 24	75 36W	20	17	17		H
SALISBURY FAA AP	8005	01	WICOMICO	38 20	75 31W	48	24	24		H
SAVAGE RIVER DAM	8065	08	GARRETT	39 31	79 8W	1495	08	08	08	CH
SHARPSBURG 5 S	8207	07	WASHINGTON	39 24	77 43W	500	07	07		H
SINES DEEP CREEK	8315	08	GARRETT	39 31	79 25W	2040	07	07		H
SMITHSBURG 2NW	8371	06	WASHINGTON	39 40	77 35W	670	08	08		H
SNOW HILL 4 N	8380	01	WORCESTER	38 14	75 23W	30	17	17		H
SOLOMONS	8405	03	CALVERT	38 19	76 27W	12	08	08		H
SUDLERSVILLE 1S	8657	05	QUEEN ANNE'S	39 10	75 51W	100		20		H
UPPER MARLBORO 3 NNW	9070	04	PRINCE GEORGE'S	38 51	76 46W	130	08	08	08	H
WILLIAMSPORT	9570	07	WASHINGTON	39 37	77 51W	360		06		H
DELAWARE										
DOVER	2730	02	KENT	39 9	75 30W	30	16	16		H
FRANKFORD	3500	02	SUSSEX	38 32	75 14W	41		07		H
WILMINGTON NEW CASTLE CO AP R	9595	01	NEW CASTLE	39 40	75 36W	79	24	24		HJ
WILMINGTON PORTER RSCH	9605	01	NEW CASTLE	39 46	75 32W	270	24	24		H

REFERENCE NOTES

STATION NAMES: Name of the city, town or locality. Figures and letters following the station names indicate the distance in miles and direction from the post office or town community center.

DIVISIONS: Areas within a state of similar climatological characteristics. Division averages are calculated using data from stations that record temperature and/or precipitation. Station Precipitation totals flagged with an 'F' or 'M' are excluded from the Divisional Average calculations of precipitation. Stations with monthly Temperature averages flagged with an 'F' or 'M' are included in the Divisional Average if there are no more than 9 flagged or missing daily values in the month, else they are excluded from the divisional average for temperature.

NORMALS: The average value of the meteorological element over a time period. Effective 1 January 2012, the averaging period is 1981 to 2010. The normals for National Weather Service localities have been adjusted so as to be representative for the current observation site.

MONTHLY DEGREE DAY TOTALS: One heating (cooling) degree day is accumulated for each whole degree that the daily mean temperature is below (above) 65 degrees Fahrenheit.

PRECIPITATION: Values shown in hundredths of inches are water equivalent totals, i.e., total of liquid and melted frozen precipitation. In the "Monthly Summarized Data" table the total snow and sleet values shown in tenths of inches are unmelted amounts. The max depth on ground values of snow and sleet shown in whole inches are cumulative unmelted amounts. The number of days with .10, .50, 1.00 or more refers to water equivalents.

PRECIPITATION QUALITY CONTROL: The NCEI quality control process may flag precipitation data that are spatially inconsistent, exceed climatological limits, or are inconsistent with prevailing weather patterns.

TEMPERATURE: Original temperature values are given in the "Daily Temperature" table. Summary temperature information (averages, departures, extremes, monthly degree day totals) is based on the values labeled MAX/MIN.

WIND: (As shown in the "Evaporation and Wind" table) the total wind movement in miles over the evaporation pan as determined by an anemometer recorder located 6-8 inches above the pan.

SYMBOLS AND LETTERS USED IN THE STATION INDEX TABLE

C Station is equipped with recording rain gage (R) but values in this bulletin are from a non-recording rain gage unless indicated by an R.

G Observations appear in the "Soil Temperatures" table.

H Observations appear in the "Snowfall and Snow on the Ground" table.

J Station also published as a Local Climatological Data publication.

VAR Observation time varies.

SR / SS Observation time near sunrise / Observation time near sunset, respectively.

SYMBOLS AND LETTERS USED IN THE DATA TABLES

(DAILY DATA ARE FOR THE 24 HOURS IMMEDIATELY PRECEDING OBSERVATION TIME.)

BLANK Entries in the "Monthly Summarized Data" table indicate no record.

BLANK Entries in the "Daily Precipitation" and "Snowfall and Snow on the Ground" tables indicate zero.

BLANK Entries in the "Daily Temperature" table indicate a missing record

- No record. Data not recorded or not received in time for publication.

+ Precipitation or temperature extremes occurred on one or more previous dates during the month.

* Rain gage not read. Precipitation is included in the amount following the asterisks.

Time distribution may not be known. A * preceding the monthly total indicates precipitation amount is being carried forward to next month's total, and may include amounts from the previous month(s).

a As a subscript, indicates accumulated total.

A Amount of precipitation is the total of observer's entries for the current month. It may include precipitation that occurred during the previous month. Refer to earlier bulletin to determine date of last reading. (Hawaii stations)

B Divisional Departure from normals are computed using 1981-2010 normals.

E Normalized HDD/CDD Calculation. E is appended to the HDD/CDD Calculation when 1-9 individual daily

and/or TMIN values are missing and a Normalized HDD/CDD Calculation is provided. M appears alone if 10 or more daily values are missing.

F Monthly calculation flagged value. F is appended to average and/or total values computed which exclude one or more daily data values that have been flagged by the GHCN-Daily Dataset

M Insufficient or partial data. M is appended to average and/or total values computed with 1-9 daily values missing. M appears alone if 10 or more daily values are missing, (8 or more for wind and evaporation).

N Indicates snow fall or Snowdepth totals are computed with one or more missing days.

R Amounts from recording rain gage.

T Trace. An amount too small to measure.

SEASONAL TABLES: Monthly and seasonal snowfall and heating degree days for the 12 months ending with the June data are published in the July issue of this bulletin. Cooling degree days for the calendar year are published in the "Climatological Data Annual Summary."

Information concerning the history of changes in locations, exposure, etc. of substations is kept on file at the National Centers for Environmental Information. Historical information of regular National Weather Service Offices may be obtained from the "Local Climatological Data" annual publication. The contents of this publication may be reprinted or otherwise used freely, with proper credit to the National Centers For Environmental Information. The data are also available digitally.

Effective with the January 2011 Data-Month, COOP Observer Names are no longer included in the Monthly and Annual Climatological Data Publications. This information is not published to ensure the privacy of personal information pursuant to Section 208 of the E-Government Act of 2002 (44 USC 3601).

As of the 2011 Data-Year, Station and Climate Division Maps are no longer being included in the CD Publications. NCEI's Products Branch provides updated Station Maps for various data networks via the Historical Observing Metadata Repository: <http://www.ncdc.noaa.gov/homr>.

The GHCN-Daily Quality Control Flags shown below are displayed as superscripts with the data. For more Information on Global Historical Climatology Network - Daily and flags, see: <http://www.ncdc.noaa.gov/oa/climate/ghcn-daily/> and Comprehensive Automated Quality Assurance of Daily Surface Observations. Durre, Imke, Matthew J. Menne, Byron E. Gleason, Tamara G. Houston, Russell S. Vose, 2010: J. Appl. Meteor. Climatol., 49, 16151633. doi: 10.1175/2010JAMC2375.1

Blank = Passed All checks	N = failed naught check
D = failed duplicate check	O = failed climatological outlier check
G = failed gap check	R = failed lagged range check
I = failed internal consistency check	S = failed spatial consistency check
K = failed streak/frequent-value check	T = failed temporal consistency check
L = failed check on length of multiday period	W = temperature too warm for snow
M = failed megaconsistency check	X = failed bounds check
	Z = flagged as a result of an official Datzilla investigation

Beginning with the January 2013 CD Publication, monthly mean temperature calculations have changed to the National Data Stewardship Team standard. Monthly maximum and minimum temperatures are not rounded until after the monthly mean temperature is calculated. This is the most accurate outcome, but may be slightly different from the mean derived from rounded monthly maximum and minimum.

Processing Updates and Errata: The CD Publications are periodically reproduced to include the addition of late reports and reported corrections. The GHCND data version noted on the cover of the publication provides the generation date.

The climate division temperature and precipitation values in this publication are based on simple averages from the current set of NWS-Designated Open and Published COOP and First Order Sites within each division. These values differ from those found in NCEI's nClimDiv product. Beginning in February 2014, the nClimDiv product is used by NCEI's Monitoring Branch and in its monthly climate reports. For more details on nClimDiv, please go to <http://www.ncdc.noaa.gov/monitoring-references/maps/us-climate-divisions.php>.

These and other publications are available from the National Centers for Environmental Information

Hourly Precipitation Data

This publication contains hourly precipitation amounts obtained from recording rain gages located at National Weather Service, Federal Aviation Administration, and cooperative observer stations. Published data are displayed in inches and tenths or inches and hundredths at local standard time. HPD includes maximum precipitation for nine (9) time periods from 15 minutes to 24 hours, for selected stations.

Climatological Data

Monthly editions contain station daily maximum and minimum temperatures and precipitation. Some Stations provide daily snowfall, snow depth, evaporation, and soil temperature data. Each edition also contains monthly summaries for heating and cooling degree days (65 degree F base). The July issue contains a recap of monthly heating degree days and snow data for the preceding July through June.

The Annual issue contains monthly and annual averages of temperature, precipitation, temperature extremes, freeze data, soil temperatures, evaporation, and a recap of monthly cooling degree days.

Storm Data

Monthly issues contain a chronological listing, by states, of occurrences of storms and unusual weather phenomena. Reports contain information on storm paths, deaths, injuries, and property damage. An "Outstanding storms of the month" section highlights severe weather events with photographs, illustrations, and narratives. The December issue includes annual tornado, lightning, flash flood, and tropical cyclone summaries.

Monthly Climatic Data for the World

This publication contains monthly means for temperature, pressure, precipitation, vapor pressure, and sunshine for approximately 2,000 surface data collection stations worldwide and monthly mean upper air temperatures, dew point depressions, and wind velocities for approximately 500 observing sites.

Local Climatological Data

LCD publications summarize temperature, relative humidity, precipitation, cloudiness, wind speed and direction observations for several hundred cities in the U.S. and its territories. Each monthly publication also contains 3 hourly weather observations for that month and a hourly summary of precipitation. Annual LCD publications contain a summary of the past calendar year as well as historical averages and extremes.

For Information Call:

(828) 271-4800 Option 2

(828) 271-4010 (TDD)

(828) 271-4876 (Fax)

NOAA National Centers for Environmental Information
Attn: Customer Engagement Branch
151 Patton Avenue
Asheville, NC 28801-5001

Customer Services Number: (828) 271-4800, option 2
TDD : (828) 271-4010
Fax number: (828) 271-4876

NCEI now offers free online access to the *Climatological Data* publication.
Go to : www.ncdc.noaa.gov and choose Most Popular.