



# CLIMATOLOGICAL DATA

## MARYLAND AND DELAWARE

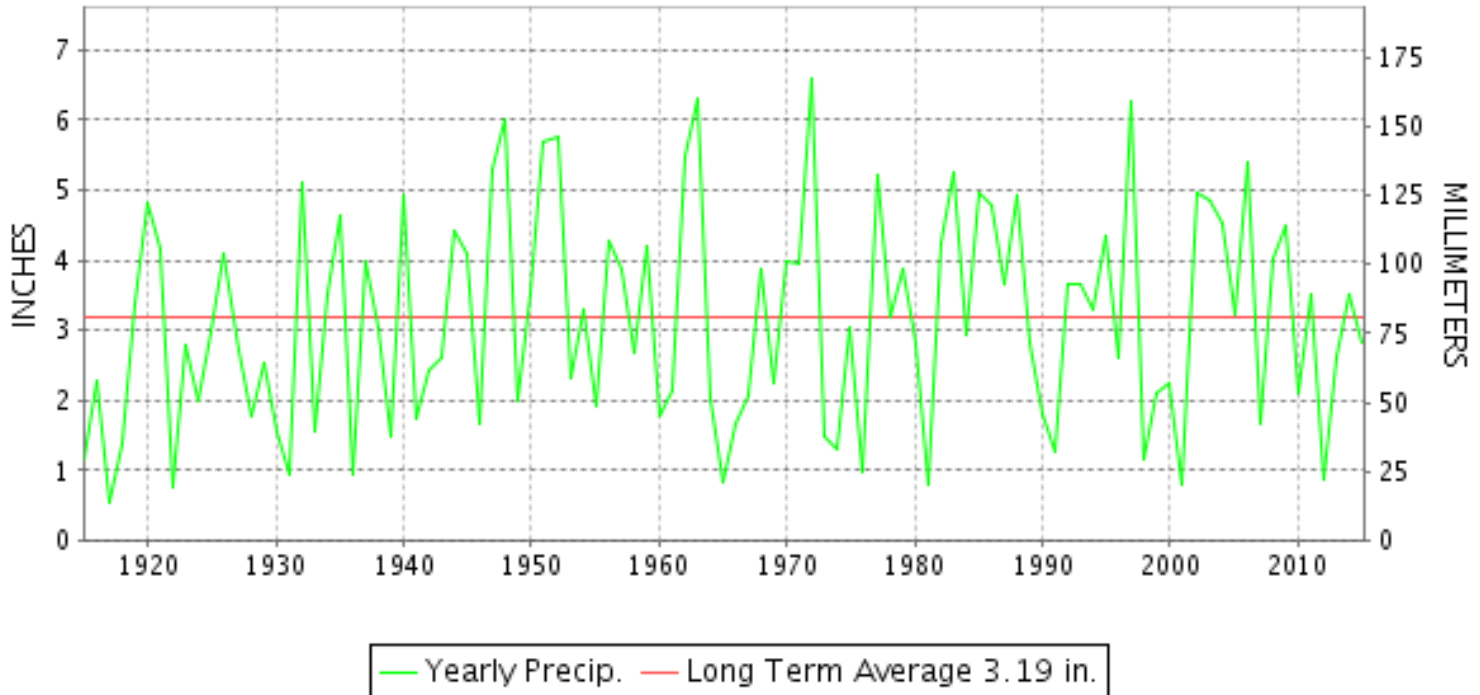
NOVEMBER 2015

VOLUME 119 NUMBER 11

ISSN 0145-0549

GHCND Ver: 3.22-upd-2016031705

### NOVEMBER PRECIPITATION BY YEAR



#### TEMPERATURE AND PRECIPITATION EXTREMES

##### MARYLAND

HIGHEST TEMPERATURE	82	NOVEMBER 06	CUMBERLAND 2
LOWEST TEMPERATURE	17	NOVEMBER 24++	2 STATIONS
GREATEST TOTAL PRECIPITATION	5.23		SNOW HILL 4 N
LEAST TOTAL PRECIPITATION	1.52		MILLERS 4 NE
GREATEST 1 DAY PRECIPITATION	3.70	NOVEMBER 10	SNOW HILL 4 N

"I certify that this is an official publication of the National Oceanic and Atmospheric Administration (NOAA) It is compiled using information from weather observing sites supervised by NOAA/National Weather Service and received at the National Centers for Environmental Information(NCEI), Asheville, North Carolina 28801."

Director  
National Centers for Environmental Information

noaa

National  
Oceanic and  
Atmospheric Administration

National  
Environmental Satellite, Data  
and Information Service

National  
Centers for Environmental Information  
Asheville, North Carolina

**DELAWARE**

HIGHEST TEMPERATURE	77	NOVEMBER 06+	2 STATIONS
LOWEST TEMPERATURE	24	NOVEMBER 24	DOVER
GREATEST TOTAL PRECIPITATION	2.69		WILMINGTON PORTER RSCH
LEAST TOTAL PRECIPITATION	2.06		DOVER
GREATEST 1 DAY PRECIPITATION	1.45	NOVEMBER 19	WILMINGTON PORTER RSCH

# MONTHLY STATION AND DIVISION SUMMARY

STATION	TEMPERATURE (°F)										PRECIPITATION (IN)													
	AVERAGE MAXIMUM	AVERAGE MINIMUM	AVERAGE	DEPARTURE FROM NORMAL	HIGHEST	DATE	LOWEST	DATE	HEATING DEG. DAYS	COOLING DEG. DAYS	NO. OF DAYS				TOTAL	DEPARTURE FROM NORMAL	GREATEST 24 HOURS	DATE	ICE PELLETS, SNOW			NO. OF DAYS		
											MAX		MIN						TOTAL	MAX DEPTH ON GROUND	DATE	.10 OR MORE	.50 OR MORE	1.00 OR MORE
											>=90	<=32	<=32	<=0										
<b>MARYLAND SOUTHERN EASTERN SHORE 01</b>																								
ASSATEAGUE	M	M	M							0	0	0	0	M				M						
PRINCESS ANNE	65.6M	40.1M	52.9M	3.8	75	06+	20	24	363E	7E	0	0	4	0	M 3.44	0.05	2.70	10	M			2	2	1
SALISBURY 2N	63.4M	43.5	53.5M		77	04	25	24	353E	5E	0	0	5	0	3.85		2.46	10	M			6	1	1
SALISBURY FAA AP	63.1	40.5	51.8	3.6	75	06+	21	24	391	5	0	0	5	0	3.26	-0.17	1.77	10	M 0.0	0		7	1	1
SNOW HILL 4 N	66.3	40.5	53.4	3.4	78	06	21	25+	356	15	0	0	8	0	5.23	1.71	3.70	10	M			5	2	1
--DIVISIONAL DATA----->			52.9	4.1B											4.11	0.93B								
<b>CENTRAL EASTERN SHORE 02</b>																								
ROYAL OAK 2 SSW	62.5	43.7	53.1	3.1	78	06	29	24	354	7	0	0	3	0	2.46	-1.19	1.29	10	0.0	0		7	1	1
--DIVISIONAL DATA----->			53.1	5.0B											2.46	-0.83B								
<b>LOWER SOUTHERN 03</b>																								
MECHANICSVILLE 5 NE	61.9	38.4	50.2	3.1	78	07	25	25+	444	4	0	0	9	0	2.11	-1.48	1.01	10	M			5	1	1
SOLOMONS	61.3M	45.5M	53.4M	1.7	79	07	34	22	342E	1E	0	0	0	0	MA 4.43		2.58	09	M			4	1	1
--DIVISIONAL DATA----->			51.8	4.5B											2.11	-1.16B								
<b>UPPER SOUTHERN 04</b>																								
BALTIMORE WASH INTL AP	60.9	41.0	50.9	4.4	80	06	28	23	421	7	0	0	7	0	2.42	-0.88	0.62	19	0.0	0		6	3	0
BELTSVILLE	61.4	40.5	50.9	4.1	79	07	28	24	420	3	0	0	6	0	2.14	-1.10	0.74	10	0.0	0		6	2	0
DALECARLIA RSVR	60.8M	41.9M	51.3M	3.7	81	07	29	24	406E	5E	0	0	6	0	M 2.44	-1.18	0.77	10	M 0.0	0		7	2	0
MARYLAND SCIENCE CENTER	61.0	47.1	54.1	3.8	81	06	33	23	329	8	0	0	0	0	2.41	-0.56	0.69	10	M			4	2	0
NATL ARBORETUM DC	63.5	42.8	53.1	4.3	79	07	29	24	355	7	0	0	3	0	2.29	-1.18	0.72	10	M			6	2	0
OXON HILL	61.6	41.9	51.7	3.3	79	07	30	24+	394	7	0	0	4	0	2.04	-1.56	0.66	10	0.0	0		6	2	0
UPPER MARLBORO 3 NNW	62.7	38.6	50.7	3.6	81	07	27	24	426	5	0	0	10	0	2.30	-1.17	0.85	20	M			6	2	0
--DIVISIONAL DATA----->			51.8	5.1B											2.27	-1.11B								
<b>NORTHERN EASTERN SHORE 05</b>																								
SUDLERSVILLE 1S															2.42		1.30	10	0.0	0		6	1	1
--DIVISIONAL DATA----->			M	B											2.42	-0.85B								
<b>NORTHERN CENTRAL 06</b>																								
ABERDEEN PHILLIPS FLD	60.3	40.7	50.5	3.5	78	07	29	24	433	5	0	0	7	0	A 3.31	-0.11	1.67	20	0.0	0		4	2	1
BRIGHTON DAM	61.4M	41.0M	51.2M		79	07	27	21	408E	4E	0	0	5	0	2.98		1.20	13	0.0	0		9	1	1
CONOWINGO DAM	M	M	M		52	29	34	30	675E	0	0	0	0	0	M 2.14	-1.40	1.18	20	0.0	0		4	1	1
CYLBURN	60.9	42.5	51.7	6.0	80	07	29	23	398	7	0	0	4	0	MA 2.13		0.52	20	M			3	1	0
DAMASCUS 3 SSW	58.1	42.4	50.3	5.1	76	06	26	23	440	4	0	0	2	0	2.48	-1.44	0.56	09	0.0	0		7	2	0
EMMITSBURG 2 SE	59.8	37.6	48.7	4.8	76	07	26	26+	489	5	0	0	10	0	1.80	-1.81	0.58	20	0.0	0		5	1	0
FREDERICK 2 NNE	M	M	M												M				M					

## MONTHLY STATION AND DIVISION SUMMARY

STATION	TEMPERATURE (°F)											PRECIPITATION (IN)												
	AVERAGE MAXIMUM	AVERAGE MINIMUM	AVERAGE	DEPARTURE FROM NORMAL	HIGHEST	DATE	LOWEST	DATE	HEATING DEG. DAYS	COOLING DEG. DAYS	NO. OF DAYS				TOTAL	DEPARTURE FROM NORMAL	GREATEST 24 HOURS	DATE	ICE PELLETS, SNOW			NO. OF DAYS		
											MAX		MIN						TOTAL	MAX DEPTH ON GROUND	DATE	.10 OR MORE	.50 OR MORE	1.00 OR MORE
											>=90	<=32	<=32	<=0										
MILLERS 4 NE	58.7	41.2	50.0	5.6	76	06	25	23	449	4	0	0	8	0	1.52	-2.07	0.59	10	0.0	0		5	1	0
SMITHSBURG 2NW	58.4M	37.0M	47.7M	3.7	75	07+	18	24	512E	0	0	0	8	0	M 1.97	-1.69	0.60	19	M			6	2	0
--DIVISIONAL DATA-----> <b>APPALACHIAN   MOUNTAIN 07</b>			50.0	5.1B										2.42	-1.20B									
CUMBERLAND 2	61.6	37.1	49.4	4.0	82	06	24	24+	460	2	0	0	9	0	1.54	-1.44	0.40	19	M			5	0	0
FROSTBURG 2	54.6	35.5	45.1	4.6	75	06	18	24+	591	0	0	0	11	0	1.71	-1.96	0.63	19	M			5	1	0
SHARPSBURG 5 S	60.5	35.2	47.8	3.3	78	06	20	24	509	2	0	0	12	0	2.38	-1.02	0.66	19	M			5	2	0
WILLIAMSPORT														M					M	0				
--DIVISIONAL DATA-----> <b>ALLEGHENY PLATEAU 08</b>			47.4	4.7B										1.88	-1.39B									
OAKLAND 1 SE	59.0	33.2	46.1	6.8	78	05	17	24+	561	0	0	0	17	0	2.63	-1.20	0.79	19	0.0	0		6	2	0
SAVAGE RIVER DAM	57.3M	36.1M	46.7M	5.5	74	06	25	26+	541E	0	0	0	6	0	M 1.14	-1.86	0.30	29+	M			4	0	0
SINES DEEP CREEK	M	M	M		73	06+	17	24+	630E	0	0	0	11	0	MA 2.84		0.89	19	M			5	1	0
--DIVISIONAL DATA-----> <b>DELAWARE   NORTHERN 01</b>			46.4	6.8B										2.63	-0.93B									
WILMINGTON NEW CASTLE CO AP	60.4	41.2	50.8	4.2	77	06	28	25	424	6	0	0	6	0	2.25	-0.85	1.00	19	0.0	0		4	2	1
WILMINGTON PORTER RSCH	59.4	43.7	51.6	5.4	76	06	29	23	403	7	0	0	2	0	2.69	-0.79	1.45	19	0.0	0		5	2	1
--DIVISIONAL DATA-----> <b>SOUTHERN 02</b>			51.2	5.4B										2.47	-0.91B									
DOVER	62.9	43.2	53.0	3.8	77	06	24	24	358	7	0	0	5	0	2.06	-1.42	1.12	10	0.0	0		5	1	1
FRANKFORD														M					M	0				
--DIVISIONAL DATA----->			53.0	5.3B										2.06	-1.23B									

DAILY PRECIPITATION (INCHES)

STATION	TOTAL	DAY OF MONTH																															
		01	02	03	04	05	06	07	08	09	10	11	12	13	14	15	16	17	18	19	20	21	22	23	24	25	26	27	28	29	30	31	
<b>MARYLAND</b>																																	
<b>SOUTHERN</b>																																	
<b>EASTERN SHORE 01</b>																																	
ASSATEAGUE	M	-	-	-	-	-	-	-	-	-	-	-	-	-	-	-	-	-	-	-	-	-	-	-	-	-	-	-	-	-	-	-	
PRINCESS ANNE	M 3.44	-	-	-	-	0.65	-	-	-	-	2.70	-	-	-	-	-	-	-	-	-	-	-	-	-	-	-	-	-	-	-	-	0.09	
SALISBURY 2N	3.85					0.42	0.01	0.16	0.02	0.01	2.46	0.08	0.01							0.19	0.23	0.01	0.09							0.14	0.02		
SALISBURY FAA AP	3.26	T				0.30		0.20		0.43	1.77	0.01	0.01							0.27	T		0.10							0.11	0.06		
SNOW HILL 4 N	5.23		T			T		0.25	0.03	T	3.70									0.14	0.91		0.13								0.05	0.02	
<b>CENTRAL</b>																																	
<b>EASTERN SHORE 02</b>																																	
ROYAL OAK 2 SSW	2.46	0.10				0.12		0.19		T	1.29	0.10	T																		0.18	0.08	
<b>LOWER SOUTHERN 03</b>																																	
MECHANICSVILLE 5 NE	2.11	0.06	0.05			T	T	T	0.34		1.01	0.07		0.01																	0.03	0.12	
SOLOMONS	MA 4.43	0.03 <sub>a</sub>		*	0.15 <sub>a</sub>	0.02	*	0.32 <sub>a</sub>		2.58	0.04		T						0.31	0.48	-						*	0.05 <sub>a</sub>	0.06	0.39			
<b>UPPER SOUTHERN 04</b>																																	
BALTIMORE WASH INTL AP	2.42	0.02			T	0.13	0.02	0.11		0.53	0.53		0.07							T	0.62								T	0.32	0.07		
BELTSVILLE	2.14	0.01	0.01			0.15		0.06	0.15		0.74	0.13		0.06							0.06	0.63								0.12	0.02		
DALECARLIA RSVR	M 2.44	0.04	0.03		-	0.17			0.38		0.77	0.17					0.02				0.08	0.50								-	0.18	0.10	
MARYLAND SCIENCE CENTER	2.41					0.03		0.01		0.67	0.69		0.08								0.43								0.06	0.37	0.07		
NATL ARBORETUM DC	2.29	0.05	0.01			0.24	0.02	0.08	0.15		0.72	0.10									0.06	0.66								0.13	0.07		
OXON HILL	2.04	0.02	0.03			0.21		T	0.11		0.66	0.14		0.01							0.04	0.64								0.02	0.16		
UPPER MARLBORO 3 NNW	2.30	0.02				0.18			0.11	0.05	0.70	0.16	0.02									0.85									0.21		
<b>NORTHERN</b>																																	
<b>EASTERN SHORE 05</b>																																	
SUDLERSVILLE 1S	2.42					0.15		0.10			1.30		0.10									0.40								0.05	0.30	0.02	
<b>NORTHERN CENTRAL 06</b>																																	
ABERDEEN PHILLIPS FLD	A 3.31	0.02				T	0.02		0.03		0.90	0.19		0.14							0.01	1.67								*	0.33 <sub>a</sub>		
BRIGHTON DAM	2.98					0.20		0.03	0.10		0.20	0.15	0.05	1.20							0.10	0.25								0.45	0.25		
CONOWINGO DAM	M 2.14										0.45	0.38		0.13								1.18									-		
CYLBURN	MA 2.13	*	0.04 <sub>a</sub>			0.10	0.02		-	*	*	1.22 <sub>a</sub>		0.20								0.03	0.52										
DAMASCUS 3 SSW	2.48	0.06				0.10	T	0.03		0.56	0.50		0.27							T	0.35								0.01	0.46	0.14		
EMMITSBURG 2 SE	1.80		T				T	T			0.09	0.24		0.19							0.42	0.58								0.21	0.07		
FREDERICK 2 NNE	M	-	-	-	-	-	-	-	-	-	-	-	-	-	-	-	-	-	-	-	-	-	-	-	-	-	-	-	-	-	-	-	
MILLERS 4 NE	1.52	T				0.02	T	T			0.59	0.14	0.22								0.30	0.01							0.01	0.20	0.03		
SMITHSBURG 2NW	M 1.97	0.05									0.14	0.50		0.25								0.60	0.10							0.26	0.07		
<b>APPALACHIAN</b>																																	
<b>MOUNTAIN 07</b>																																	
CUMBERLAND 2	1.54	T									0.25	0.35	0.10	0.05								0.40								0.37	0.02		
FROSTBURG 2	1.71	0.01						T			0.16	0.31	0.07	0.15							0.63	0.04		T					0.29	0.05			
SHARPSBURG 5 S	2.38	0.02									0.53	0.45	T	0.25							0.66	0.02								0.38	0.07		
WILLIAMSPORT	M	-	-	0.01		-	-	-		-	-	-	-	-	-	-	-	-	-	-	-	0.13								-	0.03	0.02	
<b>ALLEGHENY PLATEAU 08</b>																																	

DAILY PRECIPITATION (INCHES)

STATION	TOTAL	DAY OF MONTH																													
		01	02	03	04	05	06	07	08	09	10	11	12	13	14	15	16	17	18	19	20	21	22	23	24	25	26	27	28	29	30
OAKLAND 1 SE	2.63	0.03	0.02				0.05			0.32	0.29	0.27	0.14							0.79	0.05										0.67
SAVAGE RIVER DAM	M 1.14								-	0.30	0.30	0.08								-	0.06			-					0.30	0.10	
SINES DEEP CREEK	MA 2.84	*	*	0.05 <sub>a</sub>			*	*	0.00 <sub>a</sub>	0.21	0.35	0.09	0.27	*	*	0.00 <sub>a</sub>	-			0.89	0.18	*	*	0.10 <sub>a</sub>	-		*	*	*	0.70 <sub>a</sub>	
DELAWARE NORTHERN 01																															
WILMINGTON NEW CASTLE CO AP	2.25	T			0.06	0.02	0.01		0.03	0.84	T	0.12						T	1.00									0.01	0.14	0.02	
WILMINGTON PORTER RSCH	2.69				0.12	T	0.03			0.73	0.02	0.17							1.45								0.03	0.14			
DELAWARE SOUTHERN 02																															
DOVER	2.06				0.03		0.12			1.12	0.15								0.01	0.27									0.35	0.01	
FRANKFORD	M				-	-	-	-	-	-	-	-	-	-	-	-	-	-	-	-	-	-	-	-	-	-	-	-	-	-	-

DAILY TEMPERATURES (°F)

STATION	OB. TIME	MAX/MIN	DAY OF MONTH																															AVERAGE		
			01	02	03	04	05	06	07	08	09	10	11	12	13	14	15	16	17	18	19	20	21	22	23	24	25	26	27	28	29	30	31			
<b>MARYLAND SOUTHERN EASTERN SHORE 01</b> ASSATEAGUE	VA	MAX MIN																																		M M M
PRINCESS ANNE	17	MAX MIN		63 47	74 38	75 38	74 53	75 64		61 35	70 57	68 46	64 43	62 42			70 37	68 38	69 42	65 43	65 32			43 26	54 20	58 28	72 33	73 37					55 44	M M M		
SALISBURY 2N	17	MAX MIN	65 49	63 54	73 41	77 43	71 56	76 64	57 55	60 41	69 56	65 52	65 47	63 44	54 40	61 31	70 38	62 40	68 43	66 58	67 47	59 31	55 42	43 32	53 25	59 29	69 37	69 39	68 45	60 46	53 43	63.4 43.5				
SALISBURY FAA AP	24	MAX MIN	67 50	63 47	74 38	75 39	71 53	75 64	68 53	56 35	61 35	70 57	60 46	64 43	54 33	59 29	70 36	61 38	69 42	65 60	65 32	59 33	54 37	42 25	54 21	58 27	69 33	69 37	68 43	57 44	55 44	63.1 40.5				
SNOW HILL 4 N	17	MAX MIN	71 44	65 54	74 39	75 38	77 52	78 64	76 69	69 41	62 34	73 58	69 52	65 43	60 36	62 27	72 26	68 36	69 46	66 46	64 41	59 30	55 41	43 30	55 21	59 21	69 31	72 32	70 42	66 36	59 43	66.3 40.5				
<b>CENTRAL EASTERN SHORE 02</b> ROYAL OAK 2 SSW	17	MAX MIN	66 53	63 50	69 42	75 43	68 54	78 65	72 54	57 44	57 36	64 54	63 52	65 46	55 42	62 34	67 39	63 42	66 42	65 58	64 39	59 34	54 44	44 32	53 29	59 31	65 36	66 37	65 40	59 44	47 42	62.5 43.7				
<b>LOWER SOUTHERN 03</b> MECHANICSVILLE 5 NE	07	MAX MIN	58 37	64 52	63 41	69 41	70 41	71 58	78 60	66 40	56 32	60 34	62 50	65 44	67 41	63 40	53 29	64 30	70 35	61 39	66 46	66 46	55 29	54 29	47 29	47 25	55 25	58 29	64 33	67 36	69 41	49 40	61.9 38.4			
SOLOMONS	08	MAX MIN	66 54	62 50	70 50	69 62	79 48	56 44	62 44	63 52	64 49	69 49	63 45	58 39	64 39	66 40	62 49	64 55	62 52	64 43	64 34	64 35	41 38	41 38	54 38	55 38	62 44		57 48	48 41	50 41	61.3 45.5				
<b>UPPER SOUTHERN 04</b> BALTIMORE WASH INTL AP	24	MAX MIN	67 52	64 45	73 38	74 41	67 56	80 63	68 52	58 37	53 32	61 50	64 47	64 45	54 34	64 31	70 42	58 40	63 45	63 54	57 33	52 30	49 35	41 28	54 30	55 30	63 31	68 36	66 42	54 38	44 38	60.9 41.0				
BELTSVILLE	08	MAX MIN	59 42	67 51	65 40	76 42	76 47	70 58	79 57	65 39	59 31	57 34	60 53	62 45	64 48	60 44	53 30	65 33	69 39	59 42	65 49	64 48	54 30	53 28	33 28	30 31	33 33	64 36	67 38	65 44	47 39	61.4 40.5				
DALECARLIA RSVR	08	MAX MIN	58 37	69 51	64 41		75 58	72 59	81 53	62 52	58 34	57 40	60 50	63 46	63 45	60 32	53 35	67 37	70 44	60 49	65 47	64 30	54 42	55 30	46 29	41 30	53 30	57 35	64 47	64 47	48 39	60.8 41.9				
MARYLAND SCIENCE CENTER	24	MAX MIN	67 54	65 53	73 48	73 51	66 58	81 65	72 55	58 47	55 42	62 50	64 53	63 51	53 49	65 38	70 47	58 49	62 47	64 60	60 45	53 43	51 38	41 33	53 36	54 40	62 42	62 43	66 50	53 43	45 39	61.0 47.1				
NATL ARBORETUM DC	07	MAX MIN	61 40	67 54	66 42	75 44	76 50	74 60	69 46	67 34	59 39	66 53	70 47	64 48	65 46	61 34	55 38	65 41	70 44	62 50	67 49	71 57	55 39	48 32	43 29	55 34	58 35	64 38	67 43	67 43	50 40	63.5 42.8				
OXON HILL	08	MAX MIN	59 38	65 52	64 43	73 44	74 45	74 59	69 61	63 45	58 35	56 35	60 51	63 46	66 45	61 34	53 34	64 39	68 45	60 48	65 48	65 32	55 34	55 30	47 30	41 30	54 32	58 34	64 37	67 43	51 40	61.6 41.9				
UPPER MARLBORO 3 NNW	08	MAX MIN	62 35	68 52	64 38	75 38	76 41	71 57	81 58	66 43	61 30	57 30	61 50	63 44	67 44	55 29	66 30	71 36	62 41	65 45	64 48	55 28	55 28	47 30	42 27	56 28	59 28	66 33	69 34	68 45	48 40	62.7 38.6				
<b>NORTHERN CENTRAL 06</b> ABERDEEN PHILLIPS FLD	07	MAX MIN	57 34	64 50	65 40	72 40	77 44	70 59	78 61	64 42	58 32	56 32	61 53	64 46	60 51	52 31	63 34	70 37	58 44	61 48	63 51	55 32	52 39	47 31	43 29	52 32	56 33	62 34	65 37	58 45	46 36	60.3 40.7				
BRIGHTON DAM	08	MAX MIN	61 35	64 42	72 43	72 39	74 47	68 57	79 57	63 38	58 30	57 39	67 45	59 46	57 42	51 30	61 32	61 32			60 43	63 27	51 30	50 43	43 43			60 39	67 45	68 45	52 45	61.4 41.0				

DAILY TEMPERATURES (°F)

STATION	OB. TIME	MAX/MIN	DAY OF MONTH																															AVERAGE		
			01	02	03	04	05	06	07	08	09	10	11	12	13	14	15	16	17	18	19	20	21	22	23	24	25	26	27	28	29	30	31			
CONOWINGO DAM	07	MAX MIN																																52 35	48 34	M M
CYLBURN	08	MAX MIN	57 37	66 51	63 43	73 45	72 49	67 59	80 64	66 44	56 33	59 35	66 49	68 53	67 43	52 37	64 41	69 43	56 43	61 43	68 51	54 33	51 36	46 29	41 30	51 30	52 32	60 35	66 40	68 47	68 41	49 41	60.9 42.5			
DAMASCUS 3 SSW	22	MAX MIN	63 49	62 48	70 43	74 48	68 56	76 62	68 51	54 40	50 33	56 45	59 45	58 44	56 46	49 40	62 34	64 43	56 45	61 42	62 56	57 36	51 33	46 33	37 33	49 26	53 31	59 35	65 35	66 49	66 51	39 37	58.1 42.4			
EMMITSBURG 2 SE	07	MAX MIN	56 32	64 49	65 36	71 36	74 40	73 58	76 62	69 39	56 28	52 28	56 47	62 42	58 42	57 43	53 31	65 38	68 38	58 45	61 45	64 42	57 30	52 34	47 27	42 26	52 26	54 26	60 28	65 34	61 42	47 33	59.8 37.6			
FREDERICK 2 NNE	07	MAX MIN																																	M M	
MILLERS 4 NE	18	MAX MIN	64 46	62 49	74 40	75 43	70 55	76 61	71 51	55 39	54 29	57 47	59 49	58 44	55 47	49 40	61 31	66 42	57 43	57 41	61 55	60 43	51 30	48 37	38 25	49 27	53 29	60 32	65 44	61 50	56 37	38 31	58.7 41.2			
SMITHSBURG 2NW	08	MAX MIN	54 32	66 48	62 35	71 36	73 40	75 54	75 54	64 33	54 28	53 49	55 40	58 46	54 42		63 33	62 33	62 33	61 47	65 41	50 27	49 37	42 19	42 18	48 29		57 40	64 39	61 43	44 31	58.4 37.0				
<b>APPALACHIAN MOUNTAIN 07</b>																																				
CUMBERLAND 2	18	MAX MIN	61 38	69 48	68 39	76 39	79 40	82 47	78 55	57 38	61 29	48 29	55 44	56 43	70 43	57 42	53 35	68 33	70 33	63 39	62 50	72 41	54 29	56 29	44 24	43 24	54 27	55 27	60 31	65 34	65 47	62 47	49 37	61.6 37.1		
FROSTBURG 2	07	MAX MIN	53 31	63 48	64 40	71 40	72 46	75 50	73 47	49 30	51 28	45 29	52 41	47 35	63 40	47 35	43 39	58 39	60 43	55 43	55 33	63 28	44 30	45 18	45 18	44 26	45 26	56 34	65 39	65 45	56 30	45 30	54.6 35.5			
SHARPSBURG 5 S	07	MAX MIN	58 31	68 46	64 35	74 35	75 38	78 54	77 54	62 34	56 27	50 27	52 44	60 39	65 47	57 44	53 29	68 30	67 32	61 38	63 48	67 38	54 25	53 25	46 21	41 20	53 23	55 23	63 33	69 35	61 45	45 35	60.5 35.2			
<b>ALLEGHENY PLATEAU 08</b>																																				
OAKLAND 1 SE	07	MAX MIN	58 32	61 45	66 32	74 34	78 36	76 46	73 47	73 47	53 27	51 31	56 42	48 33	68 41	68 35	46 29	61 25	64 25	57 48	62 50	66 34	48 27	49 31	33 17	36 17	47 23	52 23	65 29	57 30	57 30	67 30	59.0 33.2			
SAVAGE RIVER DAM	08	MAX MIN	53 34	62 47	63 37	69 39	69 47	74 52	73 33	53 33		44 27	54 41	53 41	64 41	49 39	45 38	59 33	62 39	55 39		64 38	46 28	49 28			46 25	46 25	57 32	65 34	57 34	58 34	57.3 36.1			
SINES DEEP CREEK	07	MAX MIN			65 32	63 33	73 32	73 42			65 24	49 24	53 42	50 42	62 34			56 27		56 30	60 40	60 32			53 17	33 17	43 23					60 24	M M			
<b>DELAWARE NORTHERN 01</b>																																				
WILMINGTON NEW CASTLE CO AP	24	MAX MIN	65 52	64 45	75 40	74 44	68 53	77 64	68 49	59 38	58 32	61 52	61 48	60 46	59 46	52 36	61 32	69 41	58 41	62 42	64 56	60 34	54 34	49 37	42 30	51 29	53 28	62 32	65 36	66 44	50 39	46 35	60.4 41.2			
WILMINGTON PORTER RSCH	24	MAX MIN	63 48	62 48	70 45	74 49	72 56	76 68	69 51	53 43	57 37	64 53	61 53	63 47	56 46	49 35	59 34	65 46	55 44	61 44	67 55	66 40	51 38	48 37	38 29	47 30	51 33	60 39	62 43	63 47	50 39	50 34	59.4 43.7			
<b>SOUTHERN 02</b>																																				
DOVER	16	MAX MIN	67 51	62 54	74 39	76 43	70 52	77 64	75 56	58 45	58 32	61 51	61 54	64 45	62 51	58 33	62 30	70 42	66 41	63 43	66 56	64 48	55 34	54 45	45 30	53 24	58 28	63 34	67 38	67 51	64 44	47 37	62.9 43.2			



## SNOWFALL AND SNOW ON GROUND (INCHES)

STATION		DAY OF MONTH																														
		01	02	03	04	05	06	07	08	09	10	11	12	13	14	15	16	17	18	19	20	21	22	23	24	25	26	27	28	29	30	31
<b>MARYLAND</b> <b>SOUTHERN</b> <b>EASTERN SHORE 01</b> ASSATEAGUE PRINCESS ANNE SALISBURY 2N SALISBURY FAA AP SNOW HILL 4 N	SNOWFALL																															
	SNOWFALL																															
	SNOWFALL																															
	SN ON GND																															
	SNOWFALL																															
<b>DELAWARE</b> <b>NORTHERN 01</b> WILMINGTON NEW CASTLE CO AP WILMINGTON PORTER RSCH	SNOWFALL																															
	SN ON GND																															
	SNOWFALL																															
	SN ON GND																															

Snowfall: Includes snow and ice. Values for NWS stations (J index note) are Mid-Mid (LST).

Snow on ground: Includes snow, sleet, ice, and hail. Values for NWS stations (J index note) are observed at 12 UTC (GMT).

Water Equivalent: Given for NWS stations (J index note) only, when snow depth is 2 inches or more, and is measured at 18 UTC (GMT)

# PAN EVAPORATION AND WIND

STATION		DAY OF MONTH																															TOTAL OR AVERAGE		
		01	02	03	04	05	06	07	08	09	10	11	12	13	14	15	16	17	18	19	20	21	22	23	24	25	26	27	28	29	30	31			
MARYLAND UPPER SOUTHERN 04 BELTSVILLE	WIND	63	-	-	-	-	-	-	-	-	-	-	-	-	-	-	-	-	-	-	-	-	-	-	-	-	-	-	-	-	-	-	-	-	M
	EVAP	0.10	-	-	-	-	-	-	-	-	-	-	-	-	-	-	-	-	-	-	-	-	-	-	-	-	-	-	-	-	-	-	-	-	M
	MAX	-	-	-	-	-	-	-	-	-	-	-	-	-	-	-	-	-	-	-	-	-	-	-	-	-	-	-	-	-	-	-	-	-	59.0
	MIN	36	-	-	-	-	-	-	-	-	-	-	-	-	-	-	-	-	-	-	-	-	-	-	-	-	-	-	-	-	-	-	-	-	36.0
UPPER MARLBORO 3 NNW	WIND	-	-	-	-	-	-	-	-	-	-	-	-	-	-	-	-	-	-	-	-	-	-	-	-	-	-	-	-	-	-	-	-	-	M
	EVAP	-	-	-	-	-	-	-	-	-	-	-	-	-	-	-	-	-	-	-	-	-	-	-	-	-	-	-	-	-	-	-	-	-	M
	MAX	-	-	-	-	-	-	-	-	-	-	-	-	-	-	-	-	-	-	-	-	-	-	-	-	-	-	-	-	-	-	-	-	-	M
	MIN	-	-	-	-	-	-	-	-	-	-	-	-	-	-	-	-	-	-	-	-	-	-	-	-	-	-	-	-	-	-	-	-	-	M
ALLEGHENY PLATEAU 08 SAVAGE RIVER DAM	WIND	-	-	-	-	-	-	-	-	-	-	-	-	-	-	-	-	-	-	-	-	-	-	-	-	-	-	-	-	-	-	-	-	-	M
	EVAP	-	-	-	-	-	-	-	-	-	-	-	-	-	-	-	-	-	-	-	-	-	-	-	-	-	-	-	-	-	-	-	-	-	M
	MAX	-	-	-	-	-	-	-	-	-	-	-	-	-	-	-	-	-	-	-	-	-	-	-	-	-	-	-	-	-	-	-	-	-	-
	MIN	-	-	-	-	-	-	-	-	-	-	-	-	-	-	-	-	-	-	-	-	-	-	-	-	-	-	-	-	-	-	-	-	-	M

Evaporation: Is measured in hundreths of inches.

Wind: Is measured in miles.

Max and Min: The maximum and minimum temperatures (Fahrenheit) of the water in the evaporation pan.

# STATION INDEX

STATION	INDEX NO.	DIVISION	COUNTY	LATITUDE	LONGITUDE	ELEVATION (IN FEET)	OBSERVATION TIME AND TABLES			
							LOCAL STD TIME			
							TEMP	PRECIP	EVAP	SPECIAL SEE (NOTES)
MARYLAND										
ABERDEEN PHILLIPS FLD	0015	06	HARFORD	39 28	76 10W	57	07	07		CH
ASSATEAGUE	0335	01	WORCESTER	38 4	75 13W	10	VAR	VAR		H
BALTIMORE WASH INTL AP R	0465	04	ANNE ARUNDEL	39 10	76 41W	156	24	24		HJ
BELTSVILLE	0700	04	PRINCE GEORGE'S	39 2	76 56W	145	08	08	08	CH
BRIGHTON DAM	1125	06	MONTGOMERY	39 11	77 0W	330	08	08		H
CONOWINGO DAM	2060	06	HARFORD	39 39	76 11W	40	07	07		H
CUMBERLAND 2	2282	07	ALLEGANY	39 39	78 45W	730	18	18		H
CYLBURN	2308	06	BALTIMORE	39 21	76 39W	235	08	08		H
DALECARLIA RSVR	2325	04	DISTRICT OF COLUMBIA	38 56	77 7W	150	08	08		H
DAMASCUS 3 SSW	2336	06	MONTGOMERY	39 16	77 14W	700	22	22		H
EMMITSBURG 2 SE	2906	06	FREDERICK	39 41	77 17W	403	07	07		H
FREDERICK 2 NNE	3353	06	FREDERICK	39 26	77 24W	280	07	07		H
FROSTBURG 2	3415	07	ALLEGANY	39 40	78 56W	2170	07	07		H
MARYLAND SCIENCE CENTER R	5718	04	BALTIMORE (CITY)	39 17	76 37W	20	24	24		H
MECHANICSVILLE 5 NE	5865	03	ST. MARY'S	38 28	76 42W	100	07	07		H
MILLERS 4 NE	5934	06	CARROLL	39 43	76 48W	860	18	18		CH
NATL ARBORETUM DC	6350	04	DISTRICT OF COLUMBIA	38 55	76 58W	50	07	07		H
OAKLAND 1 SE	6620	08	GARRETT	39 25	79 24W	2420	07	07		H
OXON HILL	6800	04	PRINCE GEORGE'S	38 47	76 60W	120	08	08		H
PRINCESS ANNE	7330	01	SOMERSET	38 13	75 41W	20	17	17		H
ROYAL OAK 2 SSW	7806	02	TALBOT	38 43	76 11W	10	17	17		H
SALISBURY 2N	8004	01	WICOMICO	38 24	75 36W	20	17	17		H
SALISBURY FAA AP	8005	01	WICOMICO	38 20	75 31W	48	24	24		H
SAVAGE RIVER DAM	8065	08	GARRETT	39 31	79 8W	1495	08	08	08	CH
SHARPSBURG 5 S	8207	07	WASHINGTON	39 24	77 43W	500	07	07		H
SINES DEEP CREEK	8315	08	GARRETT	39 31	79 25W	2040	07	07		H
SMITHSBURG 2NW	8371	06	WASHINGTON	39 40	77 35W	670	08	08		H
SNOW HILL 4 N	8380	01	WORCESTER	38 14	75 23W	30	17	17		H
SOLOMONS	8405	03	CALVERT	38 19	76 27W	12	08	08		H
SUDLERSVILLE 1S	8657	05	QUEEN ANNE'S	39 10	75 51W	100		20		H
UPPER MARLBORO 3 NNW	9070	04	PRINCE GEORGE'S	38 51	76 46W	130	08	08	08	H
WILLIAMSPORT	9570	07	WASHINGTON	39 37	77 51W	360		06		H
DELAWARE										
DOVER	2730	02	KENT	39 9	75 30W	30	16	16		H
FRANKFORD	3500	02	SUSSEX	38 32	75 14W	41		07		H
WILMINGTON NEW CASTLE CO AP R	9595	01	NEW CASTLE	39 40	75 36W	79	24	24		HJ
WILMINGTON PORTER RSCH	9605	01	NEW CASTLE	39 46	75 32W	270	24	24		H

# REFERENCE NOTES

**STATION NAMES:** Name of the city, town or locality. Figures and letters following the station names indicate the distance in miles and direction from the post office or town community center.

**DIVISIONS:** Areas within a state of similar climatological characteristics. Division averages are calculated using data from stations that record temperature and/or precipitation. Station Precipitation totals flagged with an 'F' or 'M' are excluded from the Divisional Average calculations of precipitation. Stations with monthly Temperature averages flagged with an 'F' or 'M' are included in the Divisional Average if there are no more than 9 flagged or missing daily values in the month, else they are excluded from the divisional average for temperature.

**NORMALS:** The average value of the meteorological element over a time period. Effective 1 January 2012, the averaging period is 1981 to 2010. The normals for National Weather Service localities have been adjusted so as to be representative for the current observation site.

**MONTHLY DEGREE DAY TOTALS:** One heating (cooling) degree day is accumulated for each whole degree that the daily mean temperature is below (above) 65 degrees Fahrenheit.

**PRECIPITATION:** Values shown in hundredths of inches are water equivalent totals, i.e., total of liquid and melted frozen precipitation. In the "Monthly Summarized Data" table the total snow and sleet values shown in tenths of inches are unmelted amounts. The max depth on ground values of snow and sleet shown in whole inches are cumulative unmelted amounts. The number of days with .10, .50, 1.00 or more refers to water equivalents.

**PRECIPITATION QUALITY CONTROL:** The NCEI quality control process may flag precipitation data that are spatially inconsistent, exceed climatological limits, or are inconsistent with prevailing weather patterns.

**TEMPERATURE:** Original temperature values are given in the "Daily Temperature" table. Summary temperature information (averages, departures, extremes, monthly degree day totals) is based on the values labeled MAX/MIN.

**WIND:** (As shown in the "Evaporation and Wind" table) the total wind movement in miles over the evaporation pan as determined by an anemometer recorder located 6-8 inches above the pan.

## SYMBOLS AND LETTERS USED IN THE STATION INDEX TABLE

C Station is equipped with recording rain gage (R) but values in this bulletin are from a non-recording rain gage unless indicated by an R.

G Observations appear in the "Soil Temperatures" table.

H Observations appear in the "Snowfall and Snow on the Ground" table.

J Station also published as a Local Climatological Data publication.

VAR Observation time varies.

SR / SS Observation time near sunrise / Observation time near sunset, respectively.

## SYMBOLS AND LETTERS USED IN THE DATA TABLES

(DAILY DATA ARE FOR THE 24 HOURS IMMEDIATELY PRECEDING OBSERVATION TIME.)

BLANK Entries in the "Monthly Summarized Data" table indicate no record.

BLANK Entries in the "Daily Precipitation" and "Snowfall and Snow on the Ground" tables indicate zero.

BLANK Entries in the "Daily Temperature" table indicate a missing record

- No record. Data not recorded or not received in time for publication.

+ Precipitation or temperature extremes occurred on one or more previous dates during the month.

\* Rain gage not read. Precipitation is included in the amount following the asterisks.

Time distribution may not be known. A \* preceding the monthly total indicates precipitation amount is being carried forward to next month's total, and may include amounts from the previous month(s).

a As a subscript, indicates accumulated total.

A Amount of precipitation is the total of observer's entries for the current month. It may include precipitation that occurred during the previous month. Refer to earlier bulletin to determine date of last reading. (Hawaii stations)

B Divisional Departure from normals are computed using 1981-2010 normals.

E Normalized HDD/CDD Calculation. E is appended to the HDD/CDD Calculation when 1-9 individual daily  $\frac{1}{MAX}$

and/or TMIN values are missing and a Normalized HDD/CDD Calculation is provided. M appears alone if 10 or more daily values are missing.

F Monthly calculation flagged value. F is appended to average and/or total values computed which exclude one or more daily data values that have been flagged by the GHCN-Daily Dataset

M Insufficient or partial data. M is appended to average and/or total values computed with 1-9 daily values missing. M appears alone if 10 or more daily values are missing, (8 or more for wind and evaporation).

N Indicates snow fall or Snowdepth totals are computed with one or more missing days.

R Amounts from recording rain gage.

T Trace. An amount too small to measure.

**SEASONAL TABLES:** Monthly and seasonal snowfall and heating degree days for the 12 months ending with the June data are published in the July issue of this bulletin. Cooling degree days for the calendar year are published in the "Climatological Data Annual Summary."

Information concerning the history of changes in locations, exposure, etc. of substations is kept on file at the National Centers for Environmental Information. Historical information of regular National Weather Service Offices may be obtained from the "Local Climatological Data" annual publication. The contents of this publication may be reprinted or otherwise used freely, with proper credit to the National Centers For Environmental Information. The data are also available digitally.

Effective with the January 2011 Data-Month, COOP Observer Names are no longer included in the Monthly and Annual Climatological Data Publications. This information is not published to ensure the privacy of personal information pursuant to Section 208 of the E-Government Act of 2002 (44 USC 3601).

As of the 2011 Data-Year, Station and Climate Division Maps are no longer being included in the CD Publications. NCEI's Products Branch provides updated Station Maps for various data networks via the Historical Observing Metadata Repository: <http://www.ncdc.noaa.gov/homr>.

The GHCN-Daily Quality Control Flags shown below are displayed as superscripts with the data. For more Information on Global Historical Climatology Network - Daily and flags, see: <http://www.ncdc.noaa.gov/oa/climate/ghcn-daily/> and Comprehensive Automated Quality Assurance of Daily Surface Observations. Durre, Imke, Matthew J. Menne, Byron E. Gleason, Tamara G. Houston, Russell S. Vose, 2010: J. Appl. Meteor. Climatol., 49, 16151633. doi: 10.1175/2010JAMC2375.1

Blank = Passed All checks

D = failed duplicate check

G = failed gap check

I = failed internal consistency check

K = failed streak/frequent-value check

L = failed check on length of multiday period

M = failed megaconsistency check

N = failed naught check

O = failed climatological outlier check

R = failed lagged range check

S = failed spatial consistency check

T = failed temporal consistency check

W = temperature too warm for snow

X = failed bounds check

Z = flagged as a result of an official Datzilla investigation

Beginning with the January 2013 CD Publication, monthly mean temperature calculations have changed to the National Data Stewardship Team standard. Monthly maximum and minimum temperatures are not rounded until after the monthly mean temperature is calculated. This is the most accurate outcome, but may be slightly different from the mean derived from rounded monthly maximum and minimum.

Processing Updates and Errata: The CD Publications are periodically reproduced to include the addition of late reports and reported corrections. The GHCND data version noted on the cover of the publication provides the generation date.

The climate division temperature and precipitation values in this publication are based on simple averages from the current set of NWS-Designated Open and Published COOP and First Order Sites within each division. These values differ from those found in NCEI's nClimDiv product. Beginning in February 2014, the nClimDiv product is used by NCEI's Monitoring Branch and in its monthly climate reports. For more details on nClimDiv, please go to <http://www.ncdc.noaa.gov/monitoring-references/maps/us-climate-divisions.php>.

NOAA National Centers for Environmental Information  
Attn: Customer Engagement Branch  
151 Patton Avenue  
Asheville, NC 28801-5001

Customer Services Number: (828) 271-4800, option 2  
TDD : (828) 271-4010  
Fax number: (828) 271-4876

NCEI now offers free online access to the *Climatological Data* publication.  
Go to : [www.ncdc.noaa.gov](http://www.ncdc.noaa.gov) and choose Most Popular.