



# CLIMATOLOGICAL DATA

## MARYLAND AND DELAWARE

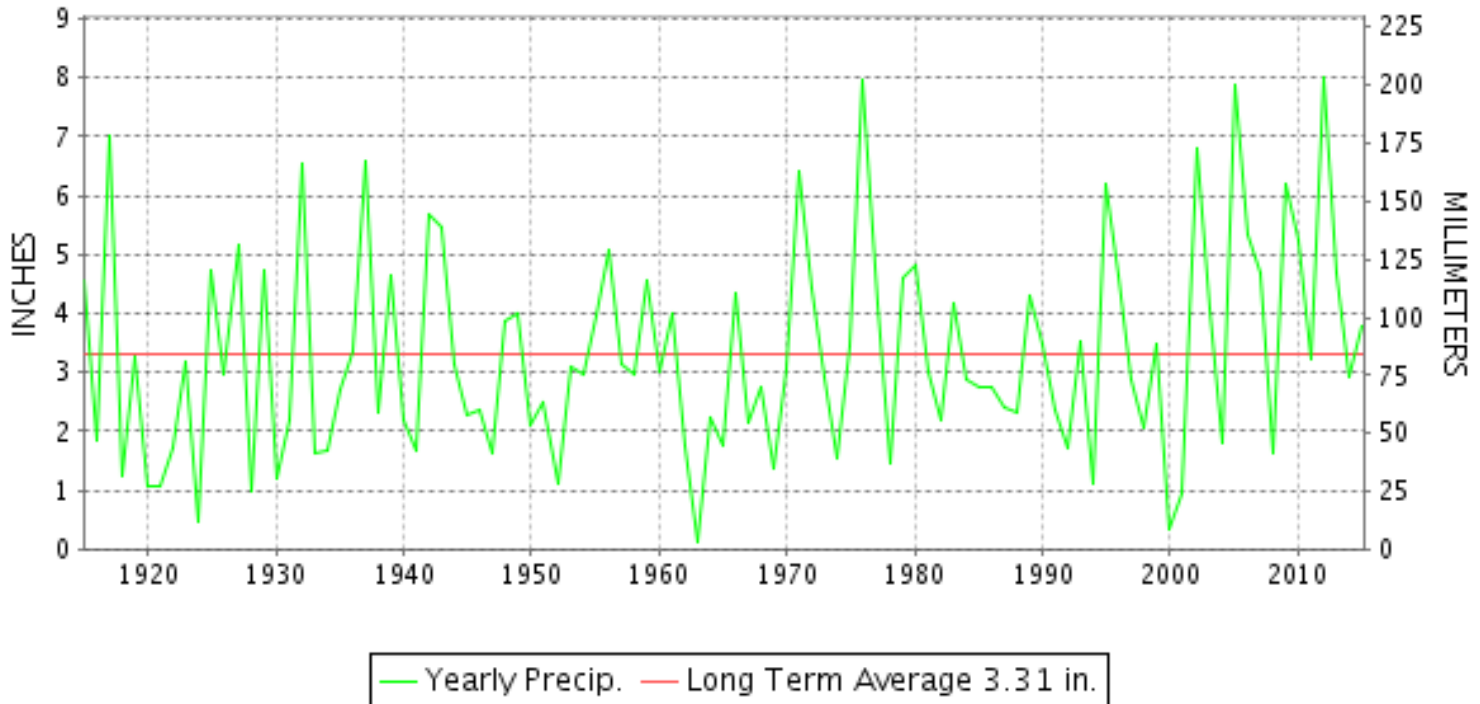
OCTOBER 2015

VOLUME 119 NUMBER 10

ISSN 0145-0549

GHCND Ver: 3.22-upd-2016012706

### OCTOBER PRECIPITATION BY YEAR



#### TEMPERATURE AND PRECIPITATION EXTREMES

##### MARYLAND

HIGHEST TEMPERATURE	91	OCTOBER 01	CYLBURN
LOWEST TEMPERATURE	22	OCTOBER 20	OAKLAND 1 SE
GREATEST TOTAL PRECIPITATION	5.36		ROYAL OAK 2 SSW
LEAST TOTAL PRECIPITATION	2.35		SINES DEEP CREEK
GREATEST 1 DAY PRECIPITATION	2.85	OCTOBER 02+	2 STATIONS
GREATEST TOTAL SNOWFALL	T		2 STATIONS

"I certify that this is an official publication of the National Oceanic and Atmospheric Administration (NOAA) It is compiled using information from weather observing sites supervised by NOAA/National Weather Service and received at the National Centers for Environmental Information(NCEI), Asheville, North Carolina 28801."

Director  
National Centers for Environmental Information

noaa

National  
Oceanic and  
Atmospheric Administration

National  
Environmental Satellite, Data  
and Information Service

National  
Centers for Environmental Information  
Asheville, North Carolina

**DELAWARE**

HIGHEST TEMPERATURE	82	OCTOBER 09	DOVER
LOWEST TEMPERATURE	30	OCTOBER 19+	2 STATIONS
GREATEST TOTAL PRECIPITATION	4.49		FRANKFORD
LEAST TOTAL PRECIPITATION	3.74		WILMINGTON NEW CASTLE CO AP
GREATEST 1 DAY PRECIPITATION	2.16	OCTOBER 02	DOVER



MONTHLY STATION AND DIVISION SUMMARY

STATION	TEMPERATURE (°F)											PRECIPITATION (IN)												
	AVERAGE MAXIMUM	AVERAGE MINIMUM	AVERAGE	DEPARTURE FROM NORMAL	HIGHEST	DATE	LOWEST	DATE	HEATING DEG. DAYS	COOLING DEG. DAYS	NO. OF DAYS				TOTAL	DEPARTURE FROM NORMAL	GREATEST 24 HOURS	DATE	ICE PELLETS, SNOW			NO. OF DAYS		
											MAX		MIN						TOTAL	MAX DEPTH ON GROUND	DATE	.10 OR MORE	.50 OR MORE	1.00 OR MORE
											>=90	<=32	<=32	<=0										
CUMBERLAND 2	66.9	42.6	54.7	-1.3	83	09	27	19	318	7	0	0	3	0	2.85	0.28	0.84	03	M			5	2	0
FROSTBURG 2	59.8	40.3	50.0	0.0	73	23+	25	20+	456	0	0	0	4	0	3.91	0.87	1.00	03	M	0		5	4	1
SHARPSBURG 5 S	65.3	40.2	52.7	-1.9	80	23	26	20	372	0	0	0	4	0	3.76	0.35	1.39	03	M			7	2	2
WILLIAMSPORT															M 1.77	-1.29	0.93	03	M	0		5	1	0
--DIVISIONAL DATA-----> ALLEGHENY PLATEAU 08			52.5	-0.2B											3.51	0.43B								
OAKLAND 1 SE	61.8	39.5	50.7	1.3	76	09	22	20	437	0	0	0	8	0	2.69	-0.46	0.53	28	0.0	0		7	1	0
SAVAGE RIVER DAM	60.1M	40.1M	50.1M	-0.7	74	10	27	20+	455E	0	0	0	3	0	M 2.67	0.01	0.98	03	M			5	3	0
SINES DEEP CREEK	M	M	M		70	23+	23	20+	492E	0	0	0	7	0	MA 2.35		0.55	28	M			2	1	0
--DIVISIONAL DATA-----> DELAWARE NORTHERN 01															2.69	-0.34B								
WILMINGTON NEW CASTLE CO AP	66.2	45.5	55.8	-0.4	79	09	30	19	280	3	0	0	2	0	3.74	0.32	1.70	02	0.0	0		5	2	1
WILMINGTON PORTER RSCH	65.3	47.4	56.3	0.5	77	09	33	19	269	6	0	0	0	0	4.20	0.39	1.91	02	0.0	0		7	3	2
--DIVISIONAL DATA-----> SOUTHERN 02			56.1	0.3B											3.97	0.61B								
DOVER	68.2	48.1	58.2	-0.5	82	09	30	19	216	11	0	0	1	0	3.98	0.56	2.16	02	0.0	0		7	2	1
FRANKFORD															4.49		2.13	02	0.0	0		5	2	2
--DIVISIONAL DATA----->			58.2	0.9B											4.24	0.86B								

DAILY PRECIPITATION (INCHES)

STATION	TOTAL	DAY OF MONTH																																	
		01	02	03	04	05	06	07	08	09	10	11	12	13	14	15	16	17	18	19	20	21	22	23	24	25	26	27	28	29	30	31			
<b>MARYLAND</b>																																			
<b>SOUTHERN</b>																																			
<b>EASTERN SHORE 01</b>																																			
ASSATEAGUE	M	-	-	-	-	-	-	-	-	-	-	-	-	-	-	-	-	-	-	-	-	-	-	-	-	-	-	-	-	-	-	-	-	-	
PRINCESS ANNE	M								0.22																								0.40		
SALISBURY 2N	4.62	0.16	2.85	0.73	0.22	0.02				0.18				T													0.01	0.34	0.10	0.01					
SALISBURY FAA AP	4.20	1.88	0.95	0.59	0.07				0.34																T		0.01	0.29	0.07						
SNOW HILL 4 N	5.23	0.38	2.69	1.06	0.34					0.43																	T	0.23	0.10						
<b>CENTRAL</b>																																			
<b>EASTERN SHORE 02</b>																																			
ROYAL OAK 2 SSW	5.36	1.18	2.53	0.30	0.33						0.25			0.06					0.01							0.05							0.30	0.35	
<b>LOWER SOUTHERN 03</b>																																			
MECHANICSVILLE 5 NE	3.98	0.18	0.86	1.36	0.29	0.01					0.39															T	0.07					0.07	0.75		
SOLOMONS	MA 3.08	2.00	0.03						0.52					T									0.01	T		T	*	0.52 <sub>a</sub>						-	
<b>UPPER SOUTHERN 04</b>																																			
BALTIMORE WASH INTL AP	3.40	0.57	0.96	0.52						0.64				T					T							0.01		T	0.63	0.07					
BELTSVILLE	3.30	0.07	1.15	0.97	0.05					0.01	0.46															0.03	0.01					0.02	0.53		
DALECARLIA RSVR	M 3.03	0.14	0.70	0.84	0.07	0.02					0.43	-																				0.07	0.76		
MARYLAND SCIENCE CENTER	2.41	0.66	0.78	0.23						0.35																							0.38	0.01	
NATL ARBORETUM DC	3.90	0.22	0.98	1.15	0.10	0.01				T	0.49				T											0.04	0.03				0.04	0.84			
OXON HILL	3.36	0.09	0.63	1.14	0.09	T				0.04	0.44				0.16							T				0.02	0.05				0.01	0.69			
UPPER MARLBORO 3 NNW	5.04	0.10	1.48	1.33	0.15							0.59			0.29											0.05					0.04	1.01			
<b>NORTHERN CENTRAL 06</b>																																			
ABERDEEN PHILLIPS FLD	A 3.19	0.05	0.37	*	1.55 <sub>a</sub>						0.31			T		T										0.02				0.07	0.81				
BRIGHTON DAM	3.20	0.10	0.50	1.10	0.10						0.40																						1.00		
CONOWINGO DAM	3.62	0.14	0.50	1.37							0.31																					0.09	1.17		
CYLBURN	A 3.32	0.08	*	1.90 <sub>a</sub>	0.09																											0.48	*	0.77 <sub>a</sub>	
DAMASCUS 3 SSW	4.94	0.36	0.85	0.33	0.01					0.14				T	T					T											2.85	0.40			
EMMITSBURG 2 SE	M 5.57	0.06	0.28	0.87	1.71	T				T	0.20				0.02					T		T								0.17	2.26				
FREDERICK 2 NNE	M	-	-	-	-	-	-	-	-	-	-	-	-	-	-	-	-	-	-	-	-	-	-	-	-	-	-	-	-	-	-	-	-	-	
MILLERS 4 NE	4.54	0.64	0.76	0.46	0.05					0.28	0.01			0.02	T	T			T											0.76	1.55				
SMITHSBURG 2NW	M 2.53	0.20	0.13	0.66	0.06										0.08															-	0.20	1.20			-
<b>APPALACHIAN</b>																																			
<b>MOUNTAIN 07</b>																																			
CUMBERLAND 2	2.85		0.06	0.84	0.25	0.01					0.38			0.03																	0.83	0.42			
FROSTBURG 2	3.91	T	0.07	1.00	0.37	0.09					0.52			0.01	T	0.04				0.05	T			T		0.04	T		0.99	0.72	0.01				
SHARPSBURG 5 S	3.76	0.24	0.26	1.39	0.15						0.13				0.03					T						0.05				0.40	1.11				
WILLIAMSPORT	M 1.77	-	0.16	0.93	0.20	0.01					0.24	0.01			0.06								0.01						-	0.15	-				
<b>ALLEGHENY PLATEAU 08</b>																																			
OAKLAND 1 SE	2.69	0.02	0.03	0.41	0.12	0.01					0.19	0.48			0.08	0.05		0.01									0.25		0.01	0.53	0.47	0.02			
SAVAGE RIVER DAM	M 2.67			0.98	0.17						-	0.33														0.06				0.58	0.51	0.04			
SINES DEEP CREEK	MA 2.35	-		*	*	0.60 <sub>a</sub>					*	*	0.55 <sub>a</sub>		0.11		0.02	*	*	0.05 <sub>a</sub>						*	0.38 <sub>a</sub>		0.55	-	0.09				-

DAILY PRECIPITATION (INCHES)

STATION	TOTAL	DAY OF MONTH																													
		01	02	03	04	05	06	07	08	09	10	11	12	13	14	15	16	17	18	19	20	21	22	23	24	25	26	27	28	29	30
DELAWARE NORTHERN 01 WILMINGTON NEW CASTLE CO AP WILMINGTON PORTER RSCH	3.74 4.20	0.10 0.24	1.70 1.91	0.07 0.20					0.49 0.10				T						T				T			0.02 0.10			0.93 1.05	0.43 0.60	
SOUTHERN 02 DOVER FRANKFORD	3.98 4.49	0.18 0.12	2.16 2.13	0.86 1.71	0.27	T			0.01	0.20 0.19			0.06	0.13											0.01			0.23	0.21		

DAILY TEMPERATURES (°F)

STATION	OB. TIME	MAX/MIN	DAY OF MONTH																															AVERAGE		
			01	02	03	04	05	06	07	08	09	10	11	12	13	14	15	16	17	18	19	20	21	22	23	24	25	26	27	28	29	30	31			
<b>MARYLAND SOUTHERN EASTERN SHORE 01</b> ASSATEAGUE	VA	MAX MIN																																		M M M
PRINCESS ANNE	17	MAX MIN	67 58	63 56				73 52	75 53	75 50	80 57		74 44	76 58	74 51	71 44	66 43			54 32	68 35	74 38	75 39	73 40			59 38	63 37	73 60	76 52	74 52			M M M		
SALISBURY 2N	17	MAX MIN	77 60	61 57	66 57	64 60	67 55	74 49	73 53	76 52	80 60	70 54	76 46	76 59	71 51	69 46	66 48	63 41	56 35	55 32	67 38	74 44	76 51	73 56	66 65	65 52	62 43	62 39	74 38	75 61	71 45	61 36	68.9 48.3			
SALISBURY FAA AP	24	MAX MIN	66 58	60 56	65 60	63 57	66 56	73 51	75 52	75 50	80 57	63 45	70 42	74 44	76 51	67 44	66 42	63 38	53 33	54 32	68 35	74 38	76 44	69 40	66 37	66 51	59 38	63 37	73 60	76 52	62 39	62 35	67.5 46.2			
SNOW HILL 4 N	17	MAX MIN	84 61	64 58	79 59	66 59	69 56	73 51	76 51	79 48	83 53	78 55	73 41	76 41	79 55	77 50	72 43	68 45	65 35	60 32	58 28	70 35	77 37	76 44	74 50	68 35	70 49	67 41	64 32	73 56	78 63	74 43	65 34	72.1 46.5		
<b>CENTRAL EASTERN SHORE 02</b> ROYAL OAK 2 SSW	17	MAX MIN	69 56	58 51	64 51	64 57	68 54	72 48	75 55	76 52	80 62	73 50	69 42	74 48	70 61	66 56	65 48	60 47	52 46	55 32	68 42	73 43	76 47	65 48	65 38	69 56	62 40	61 38	70 57	74 58	60 50	61 38	67.5 49.1			
<b>LOWER SOUTHERN 03</b> MECHANICSVILLE 5 NE	07	MAX MIN	78 57	59 53	54 51	61 54	61 53	63 47	69 47	72 54	72 56	77 53	60 39	66 41	70 44	68 52	64 46	63 39	58 34	51 31	53 31	65 39	70 41	73 43	67 38	59 38	66 43	56 37	62 40	70 62	73 44	58 37	64.9 44.8			
SOLOMONS	08	MAX MIN	61 53	65 59	63 55	63 53	70 58	74 59	81 64	66 58	68 50	72 53	79 57	72 55	68 56	65 49	60 41	52 39	56 45	70 51	74 53	64 61	62 50	67 58	67 49	56 53	62 53	62 53	70 62	75 45	59 45		66.9 53.3			
<b>UPPER SOUTHERN 04</b> BALTIMORE WASH INTL AP	24	MAX MIN	61 56	56 48	57 48	58 53	67 47	76 44	76 54	77 51	79 60	64 44	70 40	75 44	78 50	68 48	66 45	65 43	57 38	52 33	56 29	71 37	74 41	78 42	67 42	59 39	72 51	60 37	59 35	70 54	70 47	59 38	59 34	66.3 44.3		
BELTSVILLE	08	MAX MIN	76 56	57 51	51 48	57 50	58 45	66 55	75 52	75 57	77 53	79 41	64 43	71 50	75 48	77 46	66 45	66 40	64 35	56 30	51 36	68 41	76 43	78 49	67 40	60 47	59 43	61 38	70 45	69 60	58 70	58 42	66.2 45.6			
DALECARLIA RSVR	08	MAX MIN	73 56	58 52	53 48	57 48	58 50	66 46	75 47	75 53	76 57	80 53	71 46	75 47	78 53	67 46	67 46	65 41	56 33	52 32	57 33	69 42	76 42	79 45	69 51	69 42	59 51	69 42	59 39	70 41	70 58	70 41	58 37	66.1 45.4		
MARYLAND SCIENCE CENTER	24	MAX MIN	62 57	58 49	58 49	59 55	66 52	74 53	75 62	77 60	79 63	65 54	71 49	73 52	76 58	68 57	67 53	65 51	56 45	51 40	56 37	71 44	79 50	68 52	60 46	72 54	59 48	59 46	71 55	71 57	58 48	59 44	66.3 51.4			
NATL ARBORETUM DC	07	MAX MIN	76 60	67 61	61 59	70 61	62 51	70 47	74 51	77 56	78 56	80 44	66 46	72 57	76 51	78 50	67 48	67 42	58 39	54 33	58 34	69 43	76 45	78 47	70 43	62 47	71 43	60 39	65 43	71 64	71 48	58 38	69.0 48.4			
OXON HILL	08	MAX MIN	76 56	57 53	57 49	58 51	59 48	67 49	75 55	76 55	76 54	78 43	65 44	71 47	75 53	68 49	67 43	65 38	57 34	53 33	57 42	68 43	74 47	77 47	68 46	60 47	68 47	58 41	58 43	70 58	71 48	58 40	66.6 47.1			
UPPER MARLBORO 3 NNW	08	MAX MIN	76 56	57 52	52 49	58 51	60 45	66 44	76 51	77 51	78 51	80 39	63 41	73 44	76 48	80 46	71 47	68 43	66 38	59 29	54 30	57 39	72 40	78 43	82 38	70 39	60 40	70 36	60 39	61 60	70 46	73 35	61 43	67.9 43.6		
<b>NORTHERN CENTRAL 06</b> ABERDEEN PHILLIPS FLD	07	MAX MIN	77 57	58 52	54 48	56 49	57 48	67 47	75 52	75 53	76 52	63 41	67 41	72 43	73 51	67 47	65 40	65 33	52 30	49 30	54 42	68 43	74 43	73 43	65 41	59 41	72 42	60 37	60 37	70 56	71 45	59 34	65.5 44.1			
BRIGHTON DAM	08	MAX MIN	76 52	72 48	50 47	53 47	56 48	62 42	72 50	72 50	73 56	76 38	67 45	71 50	73 50	65 42	63 42	52 31	55 37	62 35	54 40	69 41	76 41	74 53	64 50	71 43	49 35	53 35	53 35	68 39	66 44	56 33	64.5 43.4			

DAILY TEMPERATURES (°F)

STATION	OB. TIME	MAX/MIN	DAY OF MONTH																															AVERAGE	
			01	02	03	04	05	06	07	08	09	10	11	12	13	14	15	16	17	18	19	20	21	22	23	24	25	26	27	28	29	30	31		
CONOWINGO DAM	07	MAX MIN																																	M M
CYLBURN	08	MAX MIN	91 72	75 70	71					79 60	75 62	79 57	65 45	68 47	71 50	75 54	64 49	63 47	61 44	53 35	48 32	54 35	71 43	71 44	76 46	63 38	58 40	69 43	57 37	57 38	75 48	79 47	57 37	67.6 47.3	
DAMASCUS 3 SSW	22	MAX MIN	61 52	54 46	52 45	54 48	63 45	70 44	73 54	74 52	76 58	63 47	68 41	73 46	74 49	63 42	61 46	52 39	49 30	53 30	69 40	74 44	76 46	65 50	59 43	68 50	56 40	55 39	67 50	66 54	57 42	63.3 45.2			
EMMITSBURG 2 SE	07	MAX MIN	72 54	59 53	56 46	52 46	56 47	64 42	73 41	75 50	75 50	78 49	63 38	69 38	74 41	74 47	63 42	65 44	63 38	54 31	50 28	55 28	72 40	74 39		64 35	60 35	67 38	57 32	55 33	68 54	64 44	55 32	64.2 41.2	
FREDERICK 2 NNE	07	MAX MIN																																	M M
MILLERS 4 NE	18	MAX MIN	66 52	54 46	51 44	54 47	65 44	72 42	73 53	73 50	77 56	63 46	69 38	73 44	72 51	66 47	62 43	56 39	48 29	53 26	70 38	74 45	75 47	70 49	58 37	68 51	58 39	57 33	65 49	67 53	58 40	54 32	64.0 43.6		
SMITHSBURG 2NW	08	MAX MIN	75 53	56 51	52 44	50 44	54 42		72 41	73 49	74 49			70 37	74 37	73 48	61 38	64 38	62 35	51 26	46 26		70 39	73 40	76 43	64 42	59 47	59 34		53 35	67 53	65 35	63.7 41.0		
<b>APPALACHIAN MOUNTAIN 07</b>																																			
CUMBERLAND 2	18	MAX MIN	76 55	57 52	55 46	52 46	55 46	68 46	76 46	81 52	83 53	80 51	67 42	76 42	78 44	73 55	67 41	68 41	64 37	49 31	51 27	62 28	78 35	78 40	78 43	71 41	69 42	64 37	62 36	55 36	63 51	65 40	52 38	66.9 42.6	
FROSTBURG 2	07	MAX MIN	67 49	49 46	56 39	45 40	47 42	62 42	70 42	70 50	73 50	72 47	60 39	71 39	73 45	64 49	57 39	60 39	56 37	41 28	43 25	57 25	70 44	72 43	73 46	67 42	60 42	56 34	55 34	47 38	58 47	58 47	44 32	59.8 40.3	
SHARPSBURG 5 S	07	MAX MIN	72 53	55 52	53 45	53 46	56 43	67 41	73 41	75 49	76 49	78 47	65 37	71 37	75 42	75 49	64 41	66 40	65 35	53 27	50 27	57 26	73 36	76 39	80 41	66 37	61 47	66 36	60 33	56 33	69 51	64 34	54 31	65.3 40.2	
<b>ALLEGHENY PLATEAU 08</b>																																			
OAKLAND 1 SE	07	MAX MIN	68 52	54 48	54 41	49 42	51 45	64 40	74 40	70 50	76 50	71 46	63 35	68 34	72 37	66 50	58 41	63 40	60 39	41 29	44 23	59 22	69 31	71 31	74 41	70 48	67 48	61 31	57 32	51 43	67 51	51 43	60 35	61.8 39.5	
SAVAGE RIVER DAM	08	MAX MIN	70 54	54 50	50 42	48 43	50 44	61 42	71 42	72 52		74 46	60 38	69 38	71 40	71 40	59 40	61 40	58 37	44 31	45 27	59 27	57 38	71 37	71 45	67 44	59 44	60 34	53 33	53 33	60 50	58 38	47 35	60.1 40.1	
SINES DEEP CREEK	07	MAX MIN	62 48				53 42	68 39	68 39	70 38	70 45			67 33	58 34	62 50	54 37	57 36			64 23	55 23	56 32	70 32	56 40		66 31	60 31	55 37		56 31		M M		
<b>DELAWARE NORTHERN 01</b>																																			
WILMINGTON NEW CASTLE CO AP	24	MAX MIN	63 56	56 48	57 49	61 54	68 47	76 46	75 55	74 52	79 57	66 47	69 42	73 45	75 53	68 51	66 47	66 46	57 39	53 32	55 42	70 44	73 43	76 46	67 46	60 36	70 45	59 40	60 36	71 53	72 55	58 40	58 34	66.2 45.5	
WILMINGTON PORTER RSCH	24	MAX MIN	66 57	59 50	58 51	59 53	63 47	71 49	75 57	73 55	77 58	64 48	67 45	72 48	73 56	66 52	62 49	62 49	54 42	50 36	67 33	72 40	74 47	71 45	59 40	68 40	68 40	57 42	75 53	76 58	58 43	56 38	65.3 47.4		
<b>SOUTHERN 02</b>																																			
DOVER	16	MAX MIN	73 55	55 50	62 50	62 56	65 51	74 48	74 54	75 53	82 59	78 47	72 42	74 45	77 57	73 53	68 48	66 52	56 41	52 35	55 30	72 41	76 45	77 50	76 55	65 42	66 56	58 42	60 38	69 54	73 61	67 47	62 35	68.2 48.1	



SNOWFALL AND SNOW ON GROUND (INCHES)

STATION		DAY OF MONTH																																	
		01	02	03	04	05	06	07	08	09	10	11	12	13	14	15	16	17	18	19	20	21	22	23	24	25	26	27	28	29	30	31			
<b>MARYLAND</b>																																			
<b>SOUTHERN</b>																																			
<b>EASTERN SHORE 01</b>																																			
ASSATEAGUE	SNOWFALL																																		
PRINCESS ANNE	SNOWFALL																																		
SALISBURY 2N	SNOWFALL																																		
SALISBURY FAA AP	SNOWFALL																																		
	SN ON GND																																		
SNOW HILL 4 N	SNOWFALL																																		
<b>NORTHERN CENTRAL 06</b>																																			
DAMASCUS 3 SSW	SNOWFALL																																		
	SN ON GND																																		
EMMITSBURG 2 SE	SNOWFALL																																		
	SN ON GND																																		
	WTR EQUIV																																		
FREDERICK 2 NNE	SNOWFALL																																		
MILLERS 4 NE	SNOWFALL																																		
	SN ON GND																																		
	WTR EQUIV																																		
SMITHSBURG 2NW	SNOWFALL																																		
<b>APPALACHIAN</b>																																			
<b>MOUNTAIN 07</b>																																			
FROSTBURG 2	SNOWFALL	-	-	-	-	-	-	-	-	-	-	-	-	-	-	-	-	-	T	T	-	-	-	-	-	-	-	-	-	-	-	-	-		
	SN ON GND	-	-	-	-	-	-	-	-	-	-	-	-	-	-	-	-	-	-	-	-	-	-	-	-	-	-	-	-	-	-	-	-		
SHARPSBURG 5 S	SNOWFALL																																		
WILLIAMSPORT	SNOWFALL	-	-	-	-	-	-	-	-	-	-	-	-	-	-	-	-	-	-	-	-	-	-	-	-	-	-	-	-	-	-	-	-		
	SN ON GND	-	-	-	-	-	-	-	-	-	-	-	-	-	-	-	-	-	-	-	-	-	-	-	-	-	-	-	-	-	-	-	-		
	WTR EQUIV	-	-	-	-	-	-	-	-	-	-	-	-	-	-	-	-	-	-	-	-	-	-	-	-	-	-	-	-	-	-	-	-		
<b>DELAWARE</b>																																			
<b>NORTHERN 01</b>																																			
WILMINGTON NEW CASTLE CO AP	SNOWFALL																																		
	SN ON GND																																		
WILMINGTON PORTER RSCH	SNOWFALL																																		
	SN ON GND																																		

Snowfall: Includes snow and ice. Values for NWS stations (J index note) are Mid-Mid (LST).

Snow on ground: Includes snow, sleet, ice, and hail. Values for NWS stations (J index note) are observed at 12 UTC (GMT).

Water Equivalent: Given for NWS stations (J index note) only, when snow depth is 2 inches or more, and is measured at 18 UTC (GMT)

# PAN EVAPORATION AND WIND

STATION		DAY OF MONTH																															TOTAL OR AVERAGE
		01	02	03	04	05	06	07	08	09	10	11	12	13	14	15	16	17	18	19	20	21	22	23	24	25	26	27	28	29	30	31	
MARYLAND UPPER SOUTHERN 04 BELTSVILLE	WIND	99	95	131	113	83	36	22	25	18	73	41	21	31	34	45	43	57	65	51	28	32	14	36	39	60	54	26	53	85	53	54	1617
	EVAP	0.12	0.07	0.07	0.00	0.06	0.11	0.12	0.12	0.11	0.20	0.14	0.11	0.13	0.12	0.11	0.13	0.16	0.10	0.08	0.09	0.09	0.09	0.13	0.14	0.05	0.09	0.06	0.02	0.07	0.04	0.10	3.03
	MAX	56	56	56	52	54	69	74	74	77	76	68	71	72	72	62	67	66	54	49	58	63	72	72	70	56	65	58	52	65	69	60	64.6
	MIN	54	50	44	46	46	46	47	53	54	53	43	46	46	50	44	44	40	34	34	33	36	42	44	40	41	41	38	37	52	41	36	43.7
UPPER MARLBORO 3 NNW	WIND	-	-	-	-	-	-	-	-	-	-	-	-	-	-	-	-	-	-	-	-	-	-	-	-	-	-	-	-	-	-	M	
	EVAP	-	-	-	-	-	-	-	-	-	-	-	-	-	-	-	-	-	-	-	-	-	-	-	-	-	-	-	-	-	-	M	
	MAX	-	-	-	-	-	-	-	-	-	-	-	-	-	-	-	-	-	-	-	-	-	-	-	-	-	-	-	-	-	-	M	
	MIN	-	-	-	-	-	-	-	-	-	-	-	-	-	-	-	-	-	-	-	-	-	-	-	-	-	-	-	-	-	-	M	
ALLEGHENY PLATEAU 08 SAVAGE RIVER DAM	WIND	-	-	-	-	-	-	-	-	-	-	-	-	-	-	-	-	-	-	-	-	-	-	-	-	-	-	-	-	-	-	M	
	EVAP	-	-	-	-	-	-	-	-	-	-	-	-	-	-	-	-	-	-	-	-	-	-	-	-	-	-	-	-	-	-	M	
	MAX	-	-	-	-	-	-	-	-	-	-	-	-	-	-	-	-	-	-	-	-	-	-	-	-	-	-	-	-	-	-	-	
	MIN	-	-	-	-	-	-	-	-	-	-	-	-	-	-	-	-	-	-	-	-	-	-	-	-	-	-	-	-	-	-	M	

Evaporation: Is measured in hundredths of inches.

Wind: Is measured in miles.

Max and Min: The maximum and minimum temperatures (Fahrenheit) of the water in the evaporation pan.

# STATION INDEX

STATION	INDEX NO.	DIVISION	COUNTY	LATITUDE	LONGITUDE	ELEVATION (IN FEET)	OBSERVATION TIME AND TABLES			
							LOCAL STD TIME			
							TEMP	PRECIP	EVAP	SPECIAL SEE (NOTES)
MARYLAND										
ABERDEEN PHILLIPS FLD	0015	06	HARFORD	39 28	76 10W	57	07	07		CH
ASSATEAGUE	0335	01	WORCESTER	38 4	75 13W	10	VAR	VAR		H
BALTIMORE WASH INTL AP R	0465	04	ANNE ARUNDEL	39 10	76 41W	156	24	24		HJ
BELTSVILLE	0700	04	PRINCE GEORGE'S	39 2	76 56W	145	08	08	08	CH
BRIGHTON DAM	1125	06	MONTGOMERY	39 11	77 0W	330	08	08		H
CONOWINGO DAM	2060	06	HARFORD	39 39	76 11W	40	07	07		H
CUMBERLAND 2	2282	07	ALLEGANY	39 39	78 45W	730	18	18		H
CYLBURN	2308	06	BALTIMORE	39 21	76 39W	235	08	08		H
DALECARLIA RSVR	2325	04	DISTRICT OF COLUMBIA	38 56	77 7W	150	08	08		H
DAMASCUS 3 SSW	2336	06	MONTGOMERY	39 16	77 14W	700	22	22		H
EMMITSBURG 2 SE	2906	06	FREDERICK	39 41	77 17W	403	07	07		H
FREDERICK 2 NNE	3353	06	FREDERICK	39 26	77 24W	280	07	07		H
FROSTBURG 2	3415	07	ALLEGANY	39 40	78 56W	2170	07	07		H
MARYLAND SCIENCE CENTER R	5718	04	BALTIMORE (CITY)	39 17	76 37W	20	24	24		H
MECHANICSVILLE 5 NE	5865	03	ST. MARY'S	38 28	76 42W	100	07	07		H
MILLERS 4 NE	5934	06	CARROLL	39 43	76 48W	860	18	18		CH
NATL ARBORETUM DC	6350	04	DISTRICT OF COLUMBIA	38 55	76 58W	50	07	07		H
OAKLAND 1 SE	6620	08	GARRETT	39 25	79 24W	2420	07	07		H
OXON HILL	6800	04	PRINCE GEORGE'S	38 47	76 60W	120	08	08		H
PRINCESS ANNE	7330	01	SOMERSET	38 13	75 41W	20	17	17		H
ROYAL OAK 2 SSW	7806	02	TALBOT	38 43	76 11W	10	17	17		H
SALISBURY 2N	8004	01	WICOMICO	38 24	75 36W	20	17	17		H
SALISBURY FAA AP	8005	01	WICOMICO	38 20	75 31W	48	24	24		H
SAVAGE RIVER DAM	8065	08	GARRETT	39 31	79 8W	1495	08	08	08	CH
SHARPSBURG 5 S	8207	07	WASHINGTON	39 24	77 43W	500	07	07		H
SINES DEEP CREEK	8315	08	GARRETT	39 31	79 25W	2040	07	07		H
SMITHSBURG 2NW	8371	06	WASHINGTON	39 40	77 35W	670	08	08		H
SNOW HILL 4 N	8380	01	WORCESTER	38 14	75 23W	30	17	17		H
SOLOMONS	8405	03	CALVERT	38 19	76 27W	12	08	08		H
SUDLERSVILLE 1S	8657	05	QUEEN ANNE'S	39 10	75 51W	100		20		H
UPPER MARLBORO 3 NNW	9070	04	PRINCE GEORGE'S	38 51	76 46W	130	08	08	08	H
WILLIAMSPORT	9570	07	WASHINGTON	39 37	77 51W	360		06		H
DELAWARE										
DOVER	2730	02	KENT	39 9	75 30W	30	16	16		H
FRANKFORD	3500	02	SUSSEX	38 32	75 14W	41		07		H
WILMINGTON NEW CASTLE CO AP R	9595	01	NEW CASTLE	39 40	75 36W	79	24	24		HJ
WILMINGTON PORTER RSCH	9605	01	NEW CASTLE	39 46	75 32W	270	24	24		H

# REFERENCE NOTES

**STATION NAMES:** Name of the city, town or locality. Figures and letters following the station names indicate the distance in miles and direction from the post office or town community center.

**DIVISIONS:** Areas within a state of similar climatological characteristics. Division averages are calculated using data from stations that record temperature and/or precipitation. Station Precipitation totals flagged with an 'F' or 'M' are excluded from the Divisional Average calculations of precipitation. Stations with monthly Temperature averages flagged with an 'F' or 'M' are included in the Divisional Average if there are no more than 9 flagged or missing daily values in the month, else they are excluded from the divisional average for temperature.

**NORMALS:** The average value of the meteorological element over a time period. Effective 1 January 2012, the averaging period is 1981 to 2010. The normals for National Weather Service localities have been adjusted so as to be representative for the current observation site.

**MONTHLY DEGREE DAY TOTALS:** One heating (cooling) degree day is accumulated for each whole degree that the daily mean temperature is below (above) 65 degrees Fahrenheit.

**PRECIPITATION:** Values shown in hundredths of inches are water equivalent totals, i.e., total of liquid and melted frozen precipitation. In the "Monthly Summarized Data" table the total snow and sleet values shown in tenths of inches are unmelted amounts. The max depth on ground values of snow and sleet shown in whole inches are cumulative unmelted amounts. The number of days with .10, .50, 1.00 or more refers to water equivalents.

**PRECIPITATION QUALITY CONTROL:** The NCEI quality control process may flag precipitation data that are spatially inconsistent, exceed climatological limits, or are inconsistent with prevailing weather patterns.

**TEMPERATURE:** Original temperature values are given in the "Daily Temperature" table. Summary temperature information (averages, departures, extremes, monthly degree day totals) is based on the values labeled MAX/MIN.

**WIND:** (As shown in the "Evaporation and Wind" table) the total wind movement in miles over the evaporation pan as determined by an anemometer recorder located 6-8 inches above the pan.

## SYMBOLS AND LETTERS USED IN THE STATION INDEX TABLE

C Station is equipped with recording rain gage (R) but values in this bulletin are from a non-recording rain gage unless indicated by an R.

G Observations appear in the "Soil Temperatures" table.

H Observations appear in the "Snowfall and Snow on the Ground" table.

J Station also published as a Local Climatological Data publication.

VAR Observation time varies.

SR / SS Observation time near sunrise / Observation time near sunset, respectively.

## SYMBOLS AND LETTERS USED IN THE DATA TABLES

(DAILY DATA ARE FOR THE 24 HOURS IMMEDIATELY PRECEDING OBSERVATION TIME.)

BLANK Entries in the "Monthly Summarized Data" table indicate no record.

BLANK Entries in the "Daily Precipitation" and "Snowfall and Snow on the Ground" tables indicate zero.

BLANK Entries in the "Daily Temperature" table indicate a missing record

- No record. Data not recorded or not received in time for publication.

+ Precipitation or temperature extremes occurred on one or more previous dates during the month.

\* Rain gage not read. Precipitation is included in the amount following the asterisks.

Time distribution may not be known. A \* preceding the monthly total indicates precipitation amount is being carried forward to next month's total, and may include amounts from the previous month(s).

a As a subscript, indicates accumulated total.

A Amount of precipitation is the total of observer's entries for the current month. It may include precipitation that occurred during the previous month. Refer to earlier bulletin to determine date of last reading. (Hawaii stations)

B Divisional Departure from normals are computed using 1981-2010 normals.

E Normalized HDD/CDD Calculation. E is appended to the HDD/CDD Calculation when 1-9 individual daily  $\frac{1}{MAX}$

and/or TMIN values are missing and a Normalized HDD/CDD Calculation is provided. M appears alone if 10 or more daily values are missing.

F Monthly calculation flagged value. F is appended to average and/or total values computed which exclude one or more daily data values that have been flagged by the GHCN-Daily Dataset

M Insufficient or partial data. M is appended to average and/or total values computed with 1-9 daily values missing. M appears alone if 10 or more daily values are missing, (8 or more for wind and evaporation).

N Indicates snow fall or Snowdepth totals are computed with one or more missing days.

R Amounts from recording rain gage.

T Trace. An amount too small to measure.

**SEASONAL TABLES:** Monthly and seasonal snowfall and heating degree days for the 12 months ending with the June data are published in the July issue of this bulletin. Cooling degree days for the calendar year are published in the "Climatological Data Annual Summary."

Information concerning the history of changes in locations, exposure, etc. of substations is kept on file at the National Centers for Environmental Information. Historical information of regular National Weather Service Offices may be obtained from the "Local Climatological Data" annual publication. The contents of this publication may be reprinted or otherwise used freely, with proper credit to the National Centers For Environmental Information. The data are also available digitally.

Effective with the January 2011 Data-Month, COOP Observer Names are no longer included in the Monthly and Annual Climatological Data Publications. This information is not published to ensure the privacy of personal information pursuant to Section 208 of the E-Government Act of 2002 (44 USC 3601).

As of the 2011 Data-Year, Station and Climate Division Maps are no longer being included in the CD Publications. NCEI's Products Branch provides updated Station Maps for various data networks via the Historical Observing Metadata Repository: <http://www.ncdc.noaa.gov/homr>.

The GHCN-Daily Quality Control Flags shown below are displayed as superscripts with the data. For more Information on Global Historical Climatology Network - Daily and flags, see: <http://www.ncdc.noaa.gov/oa/climate/ghcn-daily/> and Comprehensive Automated Quality Assurance of Daily Surface Observations. Durre, Imke, Matthew J. Menne, Byron E. Gleason, Tamara G. Houston, Russell S. Vose, 2010: J. Appl. Meteor. Climatol., 49, 16151633. doi: 10.1175/2010JAMC2375.1

Blank = Passed All checks

D = failed duplicate check

G = failed gap check

I = failed internal consistency check

K = failed streak/frequent-value check

L = failed check on length of multiday period

M = failed megaconsistency check

N = failed naught check

O = failed climatological outlier check

R = failed lagged range check

S = failed spatial consistency check

T = failed temporal consistency check

W = temperature too warm for snow

X = failed bounds check

Z = flagged as a result of an official Datzilla investigation

Beginning with the January 2013 CD Publication, monthly mean temperature calculations have changed to the National Data Stewardship Team standard. Monthly maximum and minimum temperatures are not rounded until after the monthly mean temperature is calculated. This is the most accurate outcome, but may be slightly different from the mean derived from rounded monthly maximum and minimum.

Processing Updates and Errata: The CD Publications are periodically reproduced to include the addition of late reports and reported corrections. The GHCND data version noted on the cover of the publication provides the generation date.

The climate division temperature and precipitation values in this publication are based on simple averages from the current set of NWS-Designated Open and Published COOP and First Order Sites within each division. These values differ from those found in NCEI's nClimDiv product. Beginning in February 2014, the nClimDiv product is used by NCEI's Monitoring Branch and in its monthly climate reports. For more details on nClimDiv, please go to <http://www.ncdc.noaa.gov/monitoring-references/maps/us-climate-divisions.php>.

NOAA National Centers for Environmental Information  
Attn: Customer Engagement Branch  
151 Patton Avenue  
Asheville, NC 28801-5001

Customer Services Number: (828) 271-4800, option 2  
TDD : (828) 271-4010  
Fax number: (828) 271-4876

NCEI now offers free online access to the *Climatological Data* publication.  
Go to : [www.ncdc.noaa.gov](http://www.ncdc.noaa.gov) and choose Most Popular.