



# CLIMATOLOGICAL DATA MARYLAND AND DELAWARE



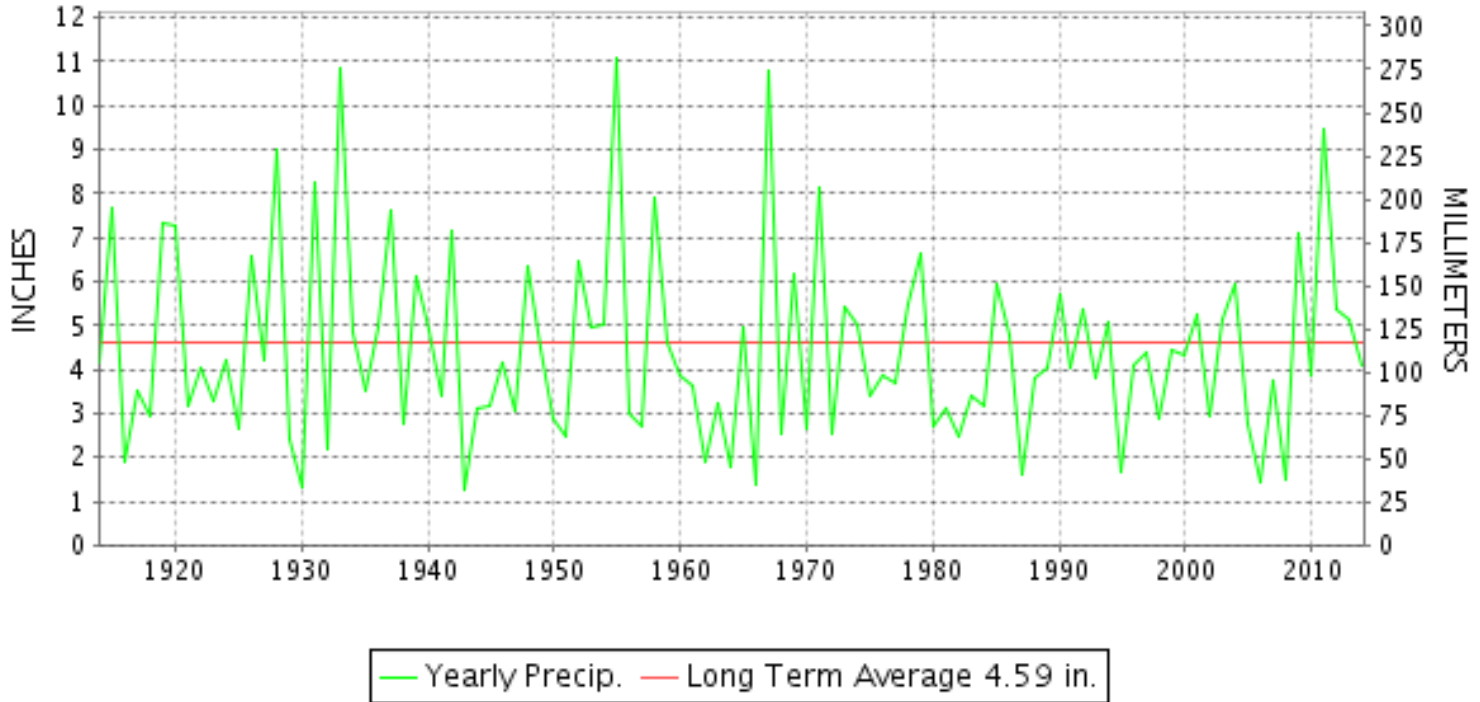
**AUGUST 2014**

VOLUME 118 NUMBER 08

ISSN 0145-0549

GHCND Ver: 3.20-upd-2014121706

## AUGUST PRECIPITATION BY YEAR



### TEMPERATURE AND PRECIPITATION EXTREMES

#### MARYLAND

HIGHEST TEMPERATURE	94	AUGUST 31	MARYLAND SCIENCE CENTER
LOWEST TEMPERATURE	40	AUGUST 18	SINES DEEP CREEK
GREATEST TOTAL PRECIPITATION	7.90		BALTIMORE WASH INTL AP
LEAST TOTAL PRECIPITATION	1.22		MECHANICSVILLE 5 NE
GREATEST 1 DAY PRECIPITATION	6.30	AUGUST 12	BALTIMORE WASH INTL AP

"I certify that this is an official publication of the National Oceanic and Atmospheric Administration (NOAA) It is compiled using information from weather observing sites supervised by NOAA/National Weather Service and received at the National Climatic Data Center(NCDC), Asheville, North Carolina 28801."

Director  
National Climatic Data Center

noaa

National  
Oceanic and  
Atmospheric Administration

National  
Environmental Satellite, Data  
and Information Service

National  
Climatic Data Center  
Asheville, North Carolina

**DELAWARE**

HIGHEST TEMPERATURE	92	AUGUST 31+	3 STATIONS
LOWEST TEMPERATURE	55	AUGUST 29	WILMINGTON NEW CASTLE CO AP
GREATEST TOTAL PRECIPITATION	4.77		WILMINGTON NEW CASTLE CO AP
LEAST TOTAL PRECIPITATION	3.23		DOVER
GREATEST 1 DAY PRECIPITATION	2.51	AUGUST 12	WILMINGTON NEW CASTLE CO AP



MONTHLY STATION AND DIVISION SUMMARY

STATION	TEMPERATURE (°F)										PRECIPITATION (IN)													
	AVERAGE MAXIMUM	AVERAGE MINIMUM	AVERAGE	DEPARTURE FROM NORMAL	HIGHEST	DATE	LOWEST	DATE	HEATING DEG. DAYS	COOLING DEG. DAYS	NO. OF DAYS				TOTAL	DEPARTURE FROM NORMAL	GREATEST 24 HOURS	DATE	ICE PELLETS, SNOW			NO. OF DAYS		
											MAX		MIN						TOTAL	MAX DEPTH ON GROUND	DATE	.10 OR MORE	.50 OR MORE	1.00 OR MORE
											>=90	<=32	<=32	<=0										
<b>APPALACHIAN MOUNTAIN 07</b>																								
CUMBERLAND 2	83.9	59.9	71.9	-3.5	92	31+	49	16	1	222	3	0	0	0	2.28	-0.89	0.91	13	0.0		5	2	0	
FROSTBURG 2	75.4	55.9	65.6	-2.2	83	31+	45	15	40	66	0	0	0	0	3.15	-0.45	0.91	12	0.0		6	3	0	
SHARPSBURG 5 S	81.2	57.6	69.4	-3.4	87	28+	47	16+	6	150	0	0	0	0	A* 2.88	0.82	0.82	24	0.0		5	2	0	
WILLIAMSPORT	M	M	M		84	31+	56	27	0	202E	0	0	0	0	M 4.76	1.84	1.32	06	M 0.0	0	6	4	2	
--DIVISIONAL DATA----->																								
<b>ALLEGHENY PLATEAU 08</b>																								
OAKLAND 1 SE	76.1	53.9	65.0	-1.9	86	31	41	16	49	59	0	0	0	0	4.99	1.21	1.55	23	0.0	0	9	3	1	
SAVAGE RIVER DAM	76.8M	56.5M	66.7M	-2.4	85	28	46	17+	26E	86E	0	0	0	0	M 1.92	-1.41	0.63	12	0.0		6	1	0	
SINES DEEP CREEK	M	M	M		80	28	40	18	78E	27E	0	0	0	0	MA 5.77	1.55	1.55	21	0.0		7	3	2	
--DIVISIONAL DATA----->																								
<b>DELAWARE NORTHERN 01</b>																								
WILMINGTON NEW CASTLE CO AP	82.1	63.3	72.7	-2.5	92	31	55	29	0	247	1	0	0	0	4.77	1.52	2.51	12	0.0	0	5	2	2	
WILMINGTON PORTER RES	81.7	63.8	72.7	-1.9	92	31	57	29	0	247	1	0	0	0	3.88	0.21	2.04	12	0.0	0	6	2	1	
--DIVISIONAL DATA----->																								
<b>SOUTHERN 02</b>																								
DOVER	82.9	63.9	73.4	-2.7	92	31	58	29+	0	271	1	0	0	0	A 3.23	-1.13	1.54	13	0.0	0	2	1	1	
--DIVISIONAL DATA----->																								

DAILY PRECIPITATION (INCHES)

STATION	TOTAL	DAY OF MONTH																																
		01	02	03	04	05	06	07	08	09	10	11	12	13	14	15	16	17	18	19	20	21	22	23	24	25	26	27	28	29	30	31		
<b>MARYLAND</b>																																		
<b>SOUTHERN</b>																																		
<b>EASTERN SHORE 01</b>																																		
ASSATEAGUE	M	-	-	-	-	-	-	-	-	-	-	-	-	-	-	-	-	-	-	-	-	-	-	-	-	-	-	-	-	-	-	-		
PRINCESS ANNE	M	-	-	-	-	-	-	-	-	-	-	-	-	-	-	-	-	-	-	-	-	-	-	-	-	-	-	-	-	-	-	-	-	
SALISBURY 2N	4.60	0.03	2.37	0.76								0.35	0.73			0.11	0.02					0.10	0.12	0.01										
SALISBURY FAA AP	4.34	0.96	1.56	0.85								0.57	0.01	T		0.20					T	0.13	0.05	0.01										
SNOW HILL 4 N	4.99	T	2.30	0.82								0.48	0.30		0.20	0.10					0.11	0.09	0.52	0.05	0.02									
<b>CENTRAL</b>																																		
<b>EASTERN SHORE 02</b>																																		
ROYAL OAK 2 SSW	1.55	0.08	0.49	0.60	0.03							0.28						T			T			0.05	0.02									
<b>LOWER SOUTHERN 03</b>																																		
MECHANICSVILLE 5 NE	1.22		0.43	0.01								0.04	0.41			0.01							0.01	0.06	0.01	0.24								
SOLOMONS	A 2.51	0.03	*	*	1.75 <sub>a</sub>							0.01	0.31		0.11						0.10		0.04			0.16								
<b>UPPER SOUTHERN 04</b>																																		
BALTIMORE WASH INTL AP	7.90	0.09	0.20	0.53		T	T				0.01	6.30										0.01	0.01	T	0.21							0.54		
BELTSVILLE	3.94		0.13	0.04	0.14		0.01					0.06	2.85										0.15	0.03	0.09	0.44								
DALECARLIA RSVR	M 5.64		0.10	0.10	-			0.18				0.10	4.80										0.12	0.02		0.22								
LAUREL 3 W	4.97		0.13	0.24		0.70						2.88										0.10	0.15	0.05	0.29							0.43		
MARYLAND SCIENCE CENTER	6.35	0.01	0.12	0.60								5.42	0.01										0.16									0.03		
NATL ARBORETUM DC	2.73		0.21	0.05	0.30		0.18	0.01				0.14	1.30										0.15	0.02	0.02	0.35								
OXON HILL	5.52		0.24	T	0.25		0.55				T	0.13	3.86						T			0.01	0.15	0.07	0.03	0.23								
UPPER MARLBORO 3 NNW	4.44		0.32	0.09		0.06						0.23	3.45									0.03	0.07	0.01		0.18								
<b>NORTHERN CENTRAL 06</b>																																		
ABERDEEN PHILLIPS FLD	5.01		0.72	0.07	0.11							0.05	3.73											0.29	T	0.04								
BRIGHTON DAM	4.96		0.10	0.43	0.35		0.40	T				0.15	3.01										0.10	0.05	0.05	0.32								
CONOWINGO DAM	3.61	0.19										2.53											0.14										0.75	
CYLBURN	A 4.78		0.12	*	1.26 <sub>a</sub>		0.03					0.13	3.22										0.02		T									
DAMASCUS 3 SSW	3.44	0.01		0.60				0.13			0.10	1.19									T	0.15	0.11	0.02	0.88	0.02						0.23		
EMMITSBURG 2 SE	5.16		0.01	0.01	1.08		0.21	0.01				0.29	1.47										0.13	0.02	T	1.93								
FREDERICK 2 NNE	M	-	-	-	-	-	-	-	-	-	-	-	-	-	-	-	-	-	-	-	-	-	-	-	-	-	-	-	-	-	-	-	-	
MILLERS 4 NE	3.64		T	0.26	0.19		0.15					1.31	0.03						T			0.03		1.30	0.23						T		0.14	
SMITHSBURG 2NW	M	-	-	-	-	-	-	-	-	-	-	-	-	-	-	-	-	-	-	-	-	-	-	-	-	-	-	-	-	-	-	-	-	
<b>APPALACHIAN</b>																																		
<b>MOUNTAIN 07</b>																																		
CUMBERLAND 2	2.28				0.02			0.11				0.71	0.91										0.02	0.29		0.07	0.12				T		0.03	
FROSTBURG 2	3.15		T	0.04				0.09				0.91	0.77	0.03						T		0.10	0.44	0.58	0.18				T			0.01		
SHARPSBURG 5 S	A* 2.88	T	*	*	*	0.67 <sub>a</sub>		0.10				0.66	0.21										0.42		0.82							-	-	
WILLIAMSPORT	M 4.76						1.32	0.07				0.60	0.44	0.02						-	-		0.92	0.19	1.20									
<b>ALLEGHENY PLATEAU 08</b>																																		
OAKLAND 1 SE	4.99			0.05			0.05	0.12				0.68	0.34	0.04					0.02	0.46	0.02	0.74	0.33	0.43	1.55	0.10	0.02				0.04			
SAVAGE RIVER DAM	M 1.92			T								0.63	0.45							0.06		0.25	0.17	-	0.18	0.10					0.08	-		

MARYLAND AND DELAWARE  
201408

## DAILY PRECIPITATION (INCHES)

STATION	TOTAL	DAY OF MONTH																															
		01	02	03	04	05	06	07	08	09	10	11	12	13	14	15	16	17	18	19	20	21	22	23	24	25	26	27	28	29	30	31	
SINES DEEP CREEK	MA 5.77		*	*	0.47 <sub>a</sub>			0.35		*	*	0.05 <sub>a</sub>	1.23	0.32	0.06		-	-	0.60			1.55	0.20	*	*	0.76 <sub>a</sub>			0.18			-	-
DELAWARE NORTHERN 01																																	
WILMINGTON NEW CASTLE CO AP	4.77	0.28	0.37	0.23								2.51	T					T				0.01	T	0.03								1.34	
WILMINGTON PORTER RES	3.88		0.41	0.39								2.04	0.19					T				T	0.05	0.20								0.60	
SOUTHERN 02																																	
DOVER	A 3.23		*	1.32 <sub>a</sub>								0.37	1.54	T																			

DAILY TEMPERATURES (°F)

STATION	OB. TIME	MAX/MIN	DAY OF MONTH																															AVERAGE			
			01	02	03	04	05	06	07	08	09	10	11	12	13	14	15	16	17	18	19	20	21	22	23	24	25	26	27	28	29	30	31				
<b>MARYLAND SOUTHERN EASTERN SHORE 01</b> ASSATEAGUE	VA	MAX MIN																																			M M M
PRINCESS ANNE	17	MAX MIN																																		M M M	
SALISBURY 2N	17	MAX MIN	84 56	85 55	84 56	85 57	86 56	86 56	86 56	86 56	85 62	83 58	80 70	81 73	80 58	80 57	82 56	84 56	84 56	85 56	85 57	86 67	82 71	80 64	79 61	81 57	85 57	87 58	86 68	83 55	84 59	90 72	83.9 59.7				
SALISBURY FAA AP	24	MAX MIN	81 65	79 65	83 71	87 69	89 68	88 68	86 65	84 61	86 64	85 62	84 58	83 72	85 71	82 62	86 61	87 64	83 67	83 66	85 63	86 68	85 69	80 66	79 63	82 60	85 59	90 59	87 64	83 58	86 58	93 75	84.6 64.7				
SNOW HILL 4 N	17	MAX MIN	81 67	77 63	89 69	87 65	87 65	85 65	85 63	85 59	84 58	82 57	83 72	82 71	83 57	82 55	85 58	86 59	84 65	82 70	84 68	84 63	84 61	86 56	80 53	78 61	80 56	84 53	88 56	84 64	82 52	84 54	91 67	83.8 61.5			
<b>CENTRAL EASTERN SHORE 02</b> ROYAL OAK 2 SSW	17	MAX MIN	81 73	77 63	81 68	83 65	86 65	82 66	82 64	80 58	85 60	87 63	85 58	78 70	84 75	81 62	80 54	82 60	85 60	84 62	85 69	88 61	89 67	83 71	77 64	80 63	84 56	87 57	88 57	85 69	83 53	85 60	91 73	83.5 63.4			
<b>LOWER SOUTHERN 03</b> MECHANICSVILLE 5 NE	07	MAX MIN	83 60	76 64	75 64	78 66	84 63	85 64	84 64	81 59	81 59	83 63	82 58	82 60	77 68	81 57	81 55	77 60	80 65	82 65	81 68	81 63	84 63	87 68	79 68	74 62	76 58	77 57	83 60	86 60	83 56	83 60	77 60	81 60	80.7 61.3		
SOLOMONS	08	MAX MIN	85 72			81 65	82 71	86 71	83 70	83 68	80 71	86 69	84 67	81 71	80 73	82 64	80 63	84 66	83 70	80 71	82 68	83 73	83 70	82 70	77 68	78 65	81 66	85 66	86 67	84 67	81 70	91 74	82.6 68.9				
<b>UPPER SOUTHERN 04</b> BALTIMORE WASH INTL AP	24	MAX MIN	81 66	79 65	79 65	84 61	89 63	84 64	84 59	84 60	86 63	83 61	76 67	82 63	81 58	78 54	82 55	87 62	80 64	82 68	84 64	87 67	78 67	72 64	79 64	81 59	86 60	89 60	84 62	78 55	83 62	92 73	82.5 62.5				
BELTSVILLE	08	MAX MIN	86 68	79 64	78 69	80 63	83 63	89 61	81 61	81 63	82 59	83 68	85 68	81 54	78 55	81 61	82 55	78 64	81 64	82 68	86 64	81 66	82 66	84 66	87 68	79 64	71 59	78 58	81 70	85 53	88 60	81 70	80 62	83 62	81.7 62.7		
DALECARLIA RSVR	08	MAX MIN	87 69	79 64	78 66		85 65	89 65	89 62	82 64	83 65	83 62	87 68	82 69	81 58	83 55	79 58	83 59	87 66	83 68	84 67	88 65	87 65	88 69	80 65	74 60	78 60	82 63	87 63	88 67	82 57	88 63	80 73	84 64	83.0 64.1		
LAUREL 3 W	24	MAX MIN	80 71	81 63	81 68	85 64	90 66	84 64	85 67	85 62	86 65	82 63	77 69	83 71	82 61	82 57	88 60	81 68	85 66	85 68	87 67	85 66	87 70	73 67	79 63	83 61	87 64	86 75	83 69	86 57	83 65	82 72	92 65	83.4 65.6			
MARYLAND SCIENCE CENTER	24	MAX MIN	82 68	79 66	80 67	84 64	87 69	83 70	83 71	84 68	86 70	83 71	75 68	83 68	82 62	78 65	83 69	87 71	82 73	84 72	84 70	87 72	84 72	87 68	87 66	79 68	74 66	80 68	82 68	87 70	83 64	78 64	94 75	82.9 68.5			
NATL ARBORETUM DC	07	MAX MIN	86 63	78 62	83 72	82 67	86 68	92 68	88 65	88 66	85 66	86 63	89 68	86 70	85 58	86 57	81 59	84 72	88 68	87 70	91 68	88 67	87 70	85 70	89 64	87 63	85 63	81 64	87 63	90 64	90 70	90 59	92 64	86.0 65.7			
OXON HILL	08	MAX MIN	87 62	77 64	79 65	84 68	87 66	90 66	82 66	83 64	81 63	82 65	86 62	81 62	76 70	82 58	83 60	81 66	83 68	84 70	81 67	82 66	86 69	87 65	82 65	73 61	79 62	81 62	85 62	88 62	83 60	82 61	84 66	82.6 64.2			
UPPER MARLBORO 3 NNW	08	MAX MIN	87 65	79 64	80 66	82 66	86 65	88 65	83 64	83 58	83 61	84 63	86 58	83 67	76 68	84 56	81 53	83 58	87 61	82 65	84 67	85 64	89 65	79 68	74 62	79 58	81 58	86 60	89 64	84 53	81 59	84 66	83.0 62.4				
<b>NORTHERN CENTRAL 06</b> ABERDEEN PHILLIPS FLD	07	MAX MIN	85 61	81 61	77 65	76 64	76 63	87 65	81 65	83 59	83 59	83 59	86 62	81 65	76 68	83 60	81 59	79 55	82 55	83 55	83 59	85 66	86 67	81 68	74 63	79 60	82 61	86 62	88 63	81 55	77 55	79 66	81.3 61.7				

DAILY TEMPERATURES (°F)

STATION	OB. TIME	MAX/MIN	DAY OF MONTH																															AVERAGE		
			01	02	03	04	05	06	07	08	09	10	11	12	13	14	15	16	17	18	19	20	21	22	23	24	25	26	27	28	29	30	31			
BRIGHTON DAM	08	MAX	83	76	78	77	80	85	79	80	80	81	82	79	74	79	79	79	78	84	79	80	80	85	85	69	75	79	83	86	86	77	80	79.9		
		MIN	64	63	66	61	60	62	63	57	57	62	58	65	66	54	51	51	59	63	65	64	62	62	61	64	57	56	58	67	53	58	66	60.5		
CONOWINGO DAM	07	MAX	80	76	77	81	85	79	80	79	82	84	79	74	81	77	76	77	81	79	80	81	71	71	78	79	81	85	85	79	77	78	79.3			
		MIN	65	61	61	62	62	61	59	58	59	60	61	67	56	56	54	53	59	59	64	66	69	71	65	60	60	61	56	55	59	72	61.0			
CYLBURN	08	MAX	82	76	75	75	77	83	76	77	77	80	82	78	73	78	76	72	77	80	77	79	80	83	76	70	75	78	82	84	77	77	77.6			
		MIN	61	63	64	62	63	63	63	59	60	62	62	68	68	60	55	56	57	61	66	66	65	67	66	62	60	60	61	64	56	56	61.8			
DAMASCUS 3 SSW	22	MAX	75	77	78	79	84	77	78	78	80	84	80	73	77	78	75	78	83	81	80	84	84	75	68	74	78	83	84	78	77	79	78.9			
		MIN	66	62	63	60	63	62	62	57	62	62	61	67	66	54	50	52	62	61	66	66	64	65	65	62	58	58	61	66	52	62	70			
EMMITSBURG 2 SE	07	MAX	82	79	78	79	79	86	79	80	79	83	84	79	74	79	81	75	78	84	81	82	82	85	78	71	77	81	85	87	79	79	80.1			
		MIN	57	62	64	59	59	59	60	56	55	59	58	58	66	57	49	48	56	58	57	64	62	63	64	63	58	54	54	58	51	51	57.9			
FREDERICK 2 NNE	07	MAX																															M			
		MIN																																M		
MILLERS 4 NE	18	MAX	80	80	78	80	84	82	78	78	81	83	81	74	78	77	75	77	82	81	82	81	86	78	75	78	80	83	86	83	76	79	80.1			
		MIN	64	62	65	58	59	60	60	54	57	59	58	65	67	53	48	49	58	55	62	63	63	63	64	60	56	56	59	64	49	58	59.3			
SMITHSBURG 2NW	08	MAX																																M		
		MIN																																	M	
<b>APPALACHIAN MOUNTAIN 07</b>																																				
CUMBERLAND 2	18	MAX	84	81	84	85	90	89	86	84	84	86	87	76	78	76	80	78	85	85	85	86	89	87	83	74	77	84	88	92	81	85	83.9			
		MIN	58	60	63	59	60	62	60	57	58	62	63	63	64	55	50	49	50	66	66	69	68	67	68	64	58	56	56	58	53	55	59.9			
FROSTBURG 2	07	MAX	76	72	78	76	78	81	75	73	76	78	80	69	71	68	69	69	76	76	77	77	79	77	74	70	67	76	81	83	73	78	75.4			
		MIN	54	56	61	59	56	57	57	53	53	58	59	58	59	50	45	46	46	62	63	62	63	64	65	58	54	53	53	56	48	48	55.9			
SHARPSBURG 5 S	07	MAX	83	76	80	84	82	87	81	81	81	83	83	79	79	77	80	78	80	85	83	83	84	86	80	70	78	80	84	87	81	79	81.2			
		MIN	56	60	60	64	60	60	62	55	55	60	60	62	64	51	47	47	48	59	61	63	63	63	64	62	55	53	53	57	49	49	57.6			
WILLIAMSPORT	06	MAX																																	M	
		MIN																																		M
<b>ALLEGHENY PLATEAU 08</b>																																				
OAKLAND 1 SE	07	MAX	77	72	75	74	79	81	74	76	75	76	76	76	78	66	71	69	75	76	76	80	77	77	79	67	71	79	84	84	78	86	76.1			
		MIN	51	53	60	54	52	53	55	49	50	63	57	57	59	50	42	41	42	61	61	58	60	63	63	59	52	48	51	55	45	51	53.9			
SAVAGE RIVER DAM	08	MAX	78	72	78	78	83	83	79	79	77	78	80	69	66	70	73	72	76	79	77	75	80		76	76	76	74	80	85		76	76.8			
		MIN	52	55	59	61	56	56	60	53	53	59	59	59	61	53	47	46	46	63	63	64	63		65	61	56	53	53	55		50	56.5			
SINES DEEP CREEK	07	MAX	74			76	77	78	75	73			77	65	77	65	68			73	76	77	76	74			78	73	78	80	70		M			
		MIN	49			51	52	52	57	49			49	58	59	49	41			40	60	60	60	61			50	48	48	51	46		M			
<b>DELAWARE NORTHERN 01</b>																																				
WILMINGTON NEW CASTLE CO AP	24	MAX	80	77	76	85	88	80	84	82	85	85	82	77	84	79	77	80	83	82	83	83	83	81	75	83	84	88	87	81	78	80	82.1			
		MIN	69	66	67	68	64	65	63	58	60	62	61	69	66	59	56	56	59	58	66	71	67	68	64	63	58	64	64	62	55	61	63.3			
WILMINGTON PORTER RES	24	MAX	85	75	75	82	87	87	87	79	84	87	84	76	82	78	75	80	80	82	84	84	82	78	78	79	81	87	89	78	77	79	81.7			
		MIN	62	65	65	65	68	66	65	62	62	62	62	68	67	58	58	58	63	62	66	68	66	67	63	63	61	68	63	66	57	60	63.8			
<b>SOUTHERN 02</b>																																				
DOVER	16	MAX	84	78	79	84	87	86	82	81	84	86	83	80	82	80	78	79	83	81	84	84	83	81	79	81	83	87	89	88	81	81	82.9			



MARYLAND AND DELAWARE  
201408

## DAILY TEMPERATURES (°F)

STATION	OB. TIME	MAX/MIN	DAY OF MONTH																															AVERAGE
			01	02	03	04	05	06	07	08	09	10	11	12	13	14	15	16	17	18	19	20	21	22	23	24	25	26	27	28	29	30	31	
		MIN	69	65	68	67	65	65	65	59	61	61	59	72	67	59	58	59	62	60	68	64	66	70	67	62	60	64	60	72	58	60	70	63.9

## SNOWFALL AND SNOW ON GROUND (INCHES)

STATION		DAY OF MONTH																														
		01	02	03	04	05	06	07	08	09	10	11	12	13	14	15	16	17	18	19	20	21	22	23	24	25	26	27	28	29	30	31
<b>MARYLAND</b> <b>SOUTHERN</b> <b>EASTERN SHORE 01</b> ASSATEAGUE PRINCESS ANNE SALISBURY 2N SALISBURY FAA AP SNOW HILL 4 N	SNOWFALL																															
	SNOWFALL																															
	SNOWFALL																															
	SNOWFALL																															
	SN ON GND																															
	SNOWFALL																															
<b>DELAWARE</b> <b>NORTHERN 01</b> WILMINGTON NEW CASTLE CO AP WILMINGTON PORTER RES	SNOWFALL																															
	SN ON GND																															
	SNOWFALL																															
	SN ON GND																															

Snowfall: Includes snow and ice. Values for NWS stations (J index note) are Mid-Mid (LST).

Snow on ground: Includes snow, sleet, ice, and hail. Values for NWS stations (J index note) are observed at 12 UTC (GMT).

Water Equivalent: Given for NWS stations (J index note) only, when snow depth is 2 inches or more, and is measured at 18 UTC (GMT)

# PAN EVAPORATION AND WIND

STATION		DAY OF MONTH																															TOTAL OR AVERAGE
		01	02	03	04	05	06	07	08	09	10	11	12	13	14	15	16	17	18	19	20	21	22	23	24	25	26	27	28	29	30	31	
MARYLAND UPPER SOUTHERN 04 BELTSVILLE	WIND	38	49	38	28	32	30	26	41	25	31	24	48	40	74	50	36	21	42	26	28	25	27	25	29	24	24	20	25	54	26	43	1049
	EVAP	0.22	0.09	0.13	0.13	0.25	0.24	0.12	0.27	0.17	0.18	0.23	0.14	0.20	0.29	0.22	0.24	0.19	0.12	0.27	0.11	0.16	0.11	0.07	0.04	0.14	0.20	0.19	0.20	0.29	0.18	0.10	5.49
	MAX	76	76	80	83	88	90	83	84	84	86	88	80	76	84	81	82	85	88	85	85	87	93	79	72	82	90	92	92	86	86	84	84.5
	MIN	60	64	64	66	66	66	66	62	62	65	62	63	68	58	57	57	59	65	67	66	66	66	68	65	62	62	64	70	59	59	66	63.5
UPPER MARLBORO 3 NNW	WIND	-	-	-	-	-	-	-	-	-	-	-	-	-	-	-	-	-	-	-	-	-	-	-	-	-	-	-	-	-	-	-	M
	EVAP	-	-	-	-	-	-	-	-	-	-	-	-	-	-	-	-	-	-	-	-	-	-	-	-	-	-	-	-	-	-	-	M
	MAX	-	-	-	-	-	-	-	-	-	-	-	-	-	-	-	-	-	-	-	-	-	-	-	-	-	-	-	-	-	-	-	M
	MIN	-	-	-	-	-	-	-	-	-	-	-	-	-	-	-	-	-	-	-	-	-	-	-	-	-	-	-	-	-	-	-	M
ALLEGHENY PLATEAU 08 SAVAGE RIVER DAM	WIND	-	-	-	-	-	-	-	-	-	-	-	-	-	-	-	-	-	-	-	-	-	-	-	-	-	-	-	-	-	-	-	M
	EVAP	-	-	-	-	-	-	-	-	-	-	-	-	-	-	-	-	-	-	-	-	-	-	-	-	-	-	-	-	-	-	-	M
	MAX	-	-	-	-	-	-	-	-	-	-	-	-	-	-	-	-	-	-	-	-	-	-	-	-	-	-	-	-	-	-	-	-
	MIN	-	-	-	-	-	-	-	-	-	-	-	-	-	-	-	-	-	-	-	-	-	-	-	-	-	-	-	-	-	-	-	M

Evaporation: Is measured in hundredths of inches.

Wind: Is measured in miles.

Max and Min: The maximum and minimum temperatures (Fahrenheit) of the water in the evaporation pan.

# STATION INDEX

STATION	INDEX NO.	DIVISION	COUNTY	LATITUDE	LONGITUDE	ELEVATION (IN FEET)	OBSERVATION TIME AND TABLES			
							LOCAL STD TIME			
							TEMP	PRECIP	EVAP	SPECIAL SEE (NOTES)
MARYLAND										
ABERDEEN PHILLIPS FLD	0015	06	HARFORD	39 28	76 10W	57	07	07		CH
ASSATEAGUE	0335	01	WORCESTER	38 4	75 13W	10	VAR	VAR		H
BALTIMORE WASH INTL AP R	0465	04	ANNE ARUNDEL	39 10	76 41W	156	24	24		HJ
BELTSVILLE	0700	04	PRINCE GEORGE'S	39 2	76 56W	145	08	08	08	CH
BRIGHTON DAM	1125	06	MONTGOMERY	39 11	77 0W	330	08	08		H
CONOWINGO DAM	2060	06	HARFORD	39 39	76 11W	40	07	07		H
CUMBERLAND 2	2282	07	ALLEGANY	39 39	78 45W	730	18	18		H
CYLBURN	2308	06	BALTIMORE	39 21	76 39W	235	08	08		H
DALECARLIA RSVR	2325	04	DISTRICT OF COLUMBIA	38 56	77 7W	150	08	08		H
DAMASCUS 3 SSW	2336	06	MONTGOMERY	39 16	77 14W	700	22	22		H
EMMITSBURG 2 SE	2906	06	FREDERICK	39 41	77 17W	403	07	07		H
FREDERICK 2 NNE	3353	06	FREDERICK	39 26	77 24W	280	07	07		H
FROSTBURG 2	3415	07	ALLEGANY	39 40	78 56W	2170	07	07		H
LAUREL 3 W	5111	04	PRINCE GEORGE'S	39 5	76 54W	400	24	24		H
MARYLAND SCIENCE CENTER R	5718	04	BALTIMORE (CITY)	39 17	76 37W	20	24	24		H
MECHANICSVILLE 5 NE	5865	03	ST. MARY'S	38 28	76 42W	100	07	07		H
MILLERS 4 NE	5934	06	CARROLL	39 43	76 48W	860	18	18		CH
NATL ARBORETUM DC	6350	04	DISTRICT OF COLUMBIA	38 55	76 58W	50	07	07		H
OAKLAND 1 SE	6620	08	GARRETT	39 25	79 24W	2420	07	07		H
OXON HILL	6800	04	PRINCE GEORGE'S	38 47	76 60W	120	08	08		H
PRINCESS ANNE	7330	01	SOMERSET	38 13	75 41W	20	17	17		H
ROYAL OAK 2 SSW	7806	02	TALBOT	38 43	76 11W	10	17	17		H
SALISBURY 2N	8004	01	WICOMICO	38 24	75 36W	20	17	17		H
SALISBURY FAA AP	8005	01	WICOMICO	38 20	75 31W	48	24	24		H
SAVAGE RIVER DAM	8065	08	GARRETT	39 31	79 8W	1495	08	08	08	CH
SHARPSBURG 5 S	8207	07	WASHINGTON	39 24	77 43W	500	07	07		H
SINES DEEP CREEK	8315	08	GARRETT	39 31	79 25W	2040	07	07		H
SMITHSBURG 2NW	8371	06	WASHINGTON	39 40	77 35W	670	08	08		H
SNOW HILL 4 N	8380	01	WORCESTER	38 14	75 23W	30	17	17		H
SOLOMONS	8405	03	CALVERT	38 19	76 27W	12	08	08		H
UPPER MARLBORO 3 NNW	9070	04	PRINCE GEORGE'S	38 51	76 46W	130	08	08	08	H
WILLIAMSPORT	9570	07	WASHINGTON	39 37	77 51W	360	06	06		H
DELAWARE										
DOVER	2730	02	KENT	39 9	75 30W	30	16	16		H
MILTON 1SE	6104	02	SUSSEX	38 46	75 17W	33		07		H
WILMINGTON NEW CASTLE CO AP R	9595	01	NEW CASTLE	39 40	75 36W	79	24	24		HJ
WILMINGTON PORTER RES	9605	01	NEW CASTLE	39 46	75 32W	270	24	24		H

# REFERENCE NOTES

**STATION NAMES:** Name of the city, town or locality. Figures and letters following the station names indicate the distance in miles and direction from the post office or town community center.

**DIVISIONS:** Areas within a state of similar climatological characteristics. Division averages are calculated using data from stations that record temperature and/or precipitation. Station Precipitation totals flagged with an 'F' or 'M' are excluded from the Divisional Average calculations of precipitation. Stations with monthly Temperature averages flagged with an 'F' or 'M' are included in the Divisional Average if there are no more than 9 flagged or missing daily values in the month, else they are excluded from the divisional average for temperature.

**NORMALS:** The average value of the meteorological element over a time period. Effective 1 January 2012, the averaging period is 1981 to 2010. The normals for National Weather Service localities have been adjusted so as to be representative for the current observation site.

**MONTHLY DEGREE DAY TOTALS:** One heating (cooling) degree day is accumulated for each whole degree that the daily mean temperature is below (above) 65 degrees Fahrenheit.

**PRECIPITATION:** Values shown in hundredths of inches are water equivalent totals, i.e., total of liquid and melted frozen precipitation. In the "Monthly Summarized Data" table the total snow and sleet values shown in tenths of inches are unmelted amounts. The max depth on ground values of snow and sleet shown in whole inches are cumulative unmelted amounts. The number of days with .10, .50, 1.00 or more refers to water equivalents.

**PRECIPITATION QUALITY CONTROL:** The NCDC quality control process may flag precipitation data that are spatially inconsistent, exceed climatological limits, or are inconsistent with prevailing weather patterns.

**TEMPERATURE:** Original temperature values are given in the "Daily Temperature" table. Summary temperature information (averages, departures, extremes, monthly degree day totals) is based on the values labeled MAX/MIN.

**WIND:** (As shown in the "Evaporation and Wind" table) the total wind movement in miles over the evaporation pan as determined by an anemometer recorder located 6-8 inches above the pan.

## SYMBOLS AND LETTERS USED IN THE STATION INDEX TABLE

- C Station is equipped with recording rain gage (R) but values in this bulletin are from a non-recording rain gage unless indicated by an R.
- G Observations appear in the "Soil Temperatures" table.
- H Observations appear in the "Snowfall and Snow on the Ground" table.
- J Station also published as a Local Climatological Data publication.
- VAR Observation time varies.
- SR Observation time near sunrise.
- SS Observation time near sunset.

## SYMBOLS AND LETTERS USED IN THE DATA TABLES

(DAILY DATA ARE FOR THE 24 HOURS IMMEDIATELY PRECEDING OBSERVATION TIME.)  
BLANK Entries in the "Monthly Summarized Data" table indicate no record.  
BLANK Entries in the "Daily Precipitation" and "Snowfall and Snow on the Ground" tables indicate zero.  
BLANK Entries in the "Daily Temperature" table indicate a missing record

- No record. Data not recorded or not received in time for publication.
- + Precipitation or temperature extremes occurred on one or more previous dates during the month.
- \* Rain gage not read. Precipitation is included in the amount following the asterisks.  
Time distribution may not be known. A \* preceding the monthly total indicates precipitation amount is being carried forward to next month's total, and may include amounts from the previous month(s).
- a As a subscript, indicates accumulated total.

by NCDC's Climate Prediction Branch and its entries for the report. If on the day in which the precipitation was recorded during the time period, the date of last reading. (Hawaii stations)

- B Divisional Departure from normals are computed using 1981-2010 normals.
- E Normalized HDD/CDD Calculation. E is appended to the HDD/CDD Calculation when 1-9 individual daily TMAX and/or TMIN values are missing and a Normalized HDD/CDD Calculation is provided. M appears alone if 10 or more daily values are missing.
- F Monthly calculation flagged value. F is appended to average and/or total values computed which exclude one or more daily data values that have been flagged by the GHCN-Daily Dataset
- M Insufficient or partial data. M is appended to average and/or total values computed with 1-9 daily values missing. M appears alone if 10 or more daily values are missing, (8 or more for wind and evaporation).
- N Indicates snow fall or Snowdepth totals are computed with one or more missing days.
- R Amounts from recording rain gage.
- T Trace. An amount too small to measure.

**SEASONAL TABLES:** Monthly and seasonal snowfall and heating degree days for the 12 months ending with the June data are published in the July issue of this bulletin. Cooling degree days for the calendar year are published in the "Climatological Data Annual Summary."

Information concerning the history of changes in locations, exposure, etc. of substations is kept on file at the National Climatic Data Center. Historical information of regular National Weather Service Offices may be obtained from the "Local Climatological Data" annual publication. The contents of this publication may be reprinted or otherwise used freely, with proper credit to the National Climatic Data Center. The data are also available digitally.

Effective with the January 2011 Data-Month, COOP Observer Names are no longer included in the Monthly and Annual Climatological Data Publications. This information is not published to ensure the privacy of personal information pursuant to Section 208 of the E-Government Act of 2002 (44 USC 3601).

As of the 2011 Data-Year, Station and Climate Division Maps are no longer being included in the CD Publications. NCDC's Product Development Branch provides updated Station Maps for various data networks via the Historical Observing Metadata Repository: <http://www.ncdc.noaa.gov/homr>.

The GHCN-Daily Quality Control Flags shown below are displayed as superscripts with the data. For more Information on Global Historical Climatology Network - Daily and flags, see: <http://www.ncdc.noaa.gov/oa/climate/ghcn-daily/> and Comprehensive Automated Quality Assurance of Daily Surface Observations. Durre, Imke, Matthew J. Menne, Byron E. Gleason, Tamara G. Houston, Russell S. Vose, 2010: J. Appl. Meteor. Climatol., 49, 16151633. doi: 10.1175/2010JAMC2375.1

- |   |   |
|---|---|
| Blank = Passed All checks                     | N = failed naught check                                       |
| D = failed duplicate check                    | O = failed climatological outlier check                       |
| G = failed gap check                          | R = failed lagged range check                                 |
| I = failed internal consistency check         | S = failed spatial consistency check                          |
| K = failed streak/frequent-value check        | T = failed temporal consistency check                         |
| L = failed check on length of multiday period | W = temperature too warm for snow                             |
| M = failed megaconsistency check              | X = failed bounds check                                       |
|   | Z = flagged as a result of an official Datzilla investigation |

Beginning with the January 2013 CD Publication, monthly mean temperature calculations have changed to the National Data Stewardship Team standard. Monthly maximum and minimum temperatures are not rounded until after the monthly mean temperature is calculated. This is the most accurate outcome, but may be slightly different from the mean derived from rounded monthly maximum and minimum.

**Processing Updates and Errata:** The CD Publications are periodically reproduced to include the addition of late reports and reported corrections. The GHCND data version noted on the cover of the publication provides the generation date.

The climate division temperature and precipitation values in this publication are based on simple averages from the current set of NWS-Designated Open and Published COOP and First Order Sites within each division. These values differ from those found in NCDC's nClimDiv product. Beginning in February 2014, the nClimDiv product is used

## **These and other publications are available from the National Climatic Data Center**

### **Hourly Precipitation Data**

This publication contains hourly precipitation amounts obtained from recording rain gages located at National Weather Service, Federal Aviation Administration, and cooperative observer stations. Published data are displayed in inches and tenths or inches and hundredths at local standard time. HPD includes maximum precipitation for nine (9) time periods from 15 minutes to 24 hours, for selected stations.

### **Climatological Data**

Monthly editions contain station daily maximum and minimum temperatures and precipitation. Some Stations provide daily snowfall, snow depth, evaporation, and soil temperature data. Each edition also contains monthly summaries for heating and cooling degree days (65 degree F base). The July issue contains a recap of monthly heating degree days and snow data for the preceding July through June.

The Annual issue contains monthly and annual averages of temperature, precipitation, temperature extremes, freeze data, soil temperatures, evaporation, and a recap of monthly cooling degree days.

### **Storm Data**

Monthly issues contain a chronological listing, by states, of occurrences of storms and unusual weather phenomena. Reports contain information on storm paths, deaths, injuries, and property damage. An "Outstanding storms of the month" section highlights severe weather events with photographs, illustrations, and narratives. The December issue includes annual tornado, lightning, flash flood, and tropical cyclone summaries.

### **Monthly Climatic Data for the World**

This publication contains monthly means for temperature, pressure, precipitation, vapor pressure, and sunshine for approximately 2,000 surface data collection stations worldwide and monthly mean upper air temperatures, dew point depressions, and wind velocities for approximately 500 observing sites.

### **Local Climatological Data**

LCD publications summarize temperature, relative humidity, precipitation, cloudiness, wind speed and direction observations for several hundred cities in the U.S. and its territories. Each monthly publication also contains 3 hourly weather observations for that month and a hourly summary of precipitation. Annual LCD publications contain a summary of the past calendar year as well as historical averages and extremes.

For Information Call:

(828) 271-4800 Option 2

(828) 271-4010 (TDD)

(828) 271-4876 (Fax)

NOAA\National Climatic Data Center  
Attn: User Engagement & Services Branch  
151 Patton Avenue  
Asheville, NC 28801-5001

Customer Services Number: (828) 271-4800, option 2  
TDD : (828) 271-4010  
Fax number: (828) 271-4876

NCDC now offers free online access to the *Climatological Data* publication.  
Go to : [www.ncdc.noaa.gov](http://www.ncdc.noaa.gov) and choose Most Popular.