



CLIMATOLOGICAL DATA

MARYLAND AND DELAWARE

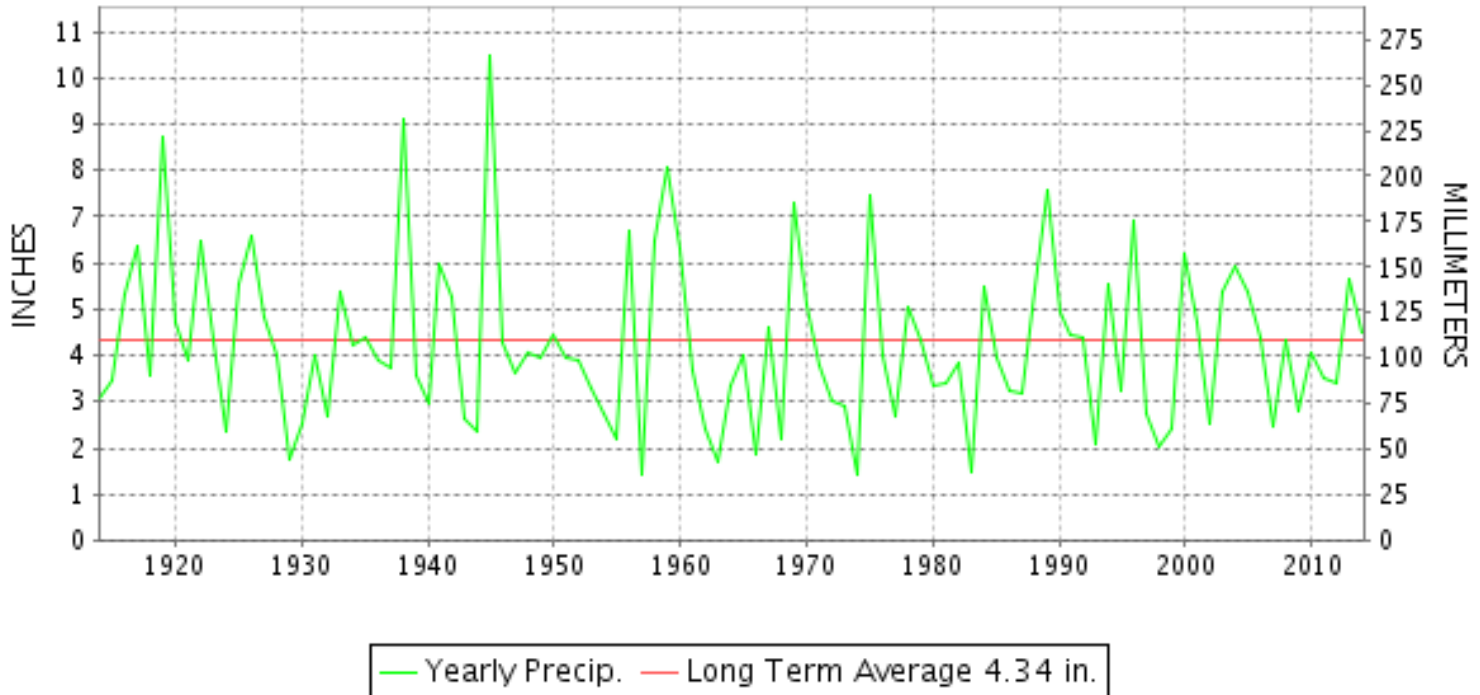
JULY 2014

VOLUME 118 NUMBER 07

ISSN 0145-0549

GHCND Ver: 3.12-upd-2014110406

JULY PRECIPITATION BY YEAR



TEMPERATURE AND PRECIPITATION EXTREMES

MARYLAND

HIGHEST TEMPERATURE	99	JULY 02	SALISBURY FAA AP
LOWEST TEMPERATURE	42	JULY 05+	2 STATIONS
GREATEST TOTAL PRECIPITATION	7.35		OAKLAND 1 SE
LEAST TOTAL PRECIPITATION	1.70		MECHANICSVILLE 5 NE
GREATEST 1 DAY PRECIPITATION	3.32	JULY 16	UPPER MARLBORO 3 NNW

"I certify that this is an official publication of the National Oceanic and Atmospheric Administration (NOAA) It is compiled using information from weather observing sites supervised by NOAA/National Weather Service and received at the National Climatic Data Center(NCDC), Asheville, North Carolina 28801."

Director
National Climatic Data Center

noaa

National
Oceanic and
Atmospheric Administration

National
Environmental Satellite, Data
and Information Service

National
Climatic Data Center
Asheville, North Carolina

DELAWARE

HIGHEST TEMPERATURE	95	JULY 08++	2 STATIONS
LOWEST TEMPERATURE	57	JULY 30	WILMINGTON NEW CASTLE CO AP
GREATEST TOTAL PRECIPITATION	5.94		WILMINGTON NEW CASTLE CO AP
LEAST TOTAL PRECIPITATION	3.43		WILMINGTON PORTER RES
GREATEST 1 DAY PRECIPITATION	1.77	JULY 14	WILMINGTON NEW CASTLE CO AP

MONTHLY STATION AND DIVISION SUMMARY

STATION	TEMPERATURE (°F)											PRECIPITATION (IN)												
	AVERAGE MAXIMUM	AVERAGE MINIMUM	AVERAGE	DEPARTURE FROM NORMAL	HIGHEST	DATE	LOWEST	DATE	HEATING DEG. DAYS	COOLING DEG. DAYS	NO. OF DAYS				TOTAL	DEPARTURE FROM NORMAL	GREATEST 24 HOURS	DATE	ICE PELLETS, SNOW			NO. OF DAYS		
											MAX		MIN						TOTAL	MAX DEPTH ON GROUND	DATE	.10 OR MORE	.50 OR MORE	1.00 OR MORE
											>=90	<=32	<=32	<=0										
APPALACHIAN MOUNTAIN 07																								
CUMBERLAND 2	86.3	62.7	74.5	-2.3	96	02	52	30	3	304	11	0	0	0	5.50	1.94	2.21	11	0.0		9	3	1	
FROSTBURG 2	76.9	57.3	67.1	-1.9	85	24+	47	30	44	119	0	0	0	0	3.87	-0.13	0.86	27	0.0		10	2	0	
SHARPSBURG 5 S	83.7	60.6	72.2	-1.9	93	03	49	31+	8	235	5	0	0	0	A 6.42	2.32	1.34	14	0.0		6	2	2	
WILLIAMSPORT	85.2M	63.8M	74.5M	-0.7	93	02	54	19	0	303E	3	0	0	0	3.75	-0.15	1.47	15	M 0.0	0	5	3	1	
--DIVISIONAL DATA----->																								
ALLEGHENY PLATEAU 08																								
OAKLAND 1 SE	77.8	56.0	66.9	-1.5	88	14	42	05	63	131	0	0	0	0	7.35	1.89	1.95	27	0.0	0	9	6	3	
SAVAGE RIVER DAM	78.7M	58.4M	68.5M	-1.7	87	24+	48	30+	28E	144E	0	0	0	0	M 2.76	-1.56	0.68	27	0.0		9	2	0	
SINES DEEP CREEK	M	M	M		84	02	42	08	83E	71E	0	0	0	0	MA 5.87		0.80	16	0.0		7	2	0	
--DIVISIONAL DATA----->																								
DELAWARE NORTHERN 01																								
WILMINGTON NEW CASTLE CO AP	85.7	66.4	76.0	-0.8	93	08	57	30	0	352	8	0	0	0	5.94	1.37	1.77	14	0.0	0	7	3	3	
WILMINGTON PORTER RES	86.0	66.9	76.5	0.3	95	08+	59	30	0	362	11	0	0	0	3.43	-1.93	1.68	28	0.0	0	9	2	1	
--DIVISIONAL DATA----->																								
SOUTHERN 02																								
DOVER	86.3	66.8	76.6	-1.1	95	02	58	30	0	366	11	0	0	0	3.51	-0.58	0.94	16	0.0	0	6	4	0	
MILTON															M				M 0.0	0				
--DIVISIONAL DATA----->																								

DAILY PRECIPITATION (INCHES)

STATION	TOTAL	DAY OF MONTH																																	
		01	02	03	04	05	06	07	08	09	10	11	12	13	14	15	16	17	18	19	20	21	22	23	24	25	26	27	28	29	30	31			
MARYLAND																																			
SOUTHERN																																			
EASTERN SHORE 01																																			
ASSATEAGUE	M	-	-	-	-	-	-	-	-	-	-	-	-	-	-	-	-	-	-	-	-	-	-	-	-	-	-	-	-	-	-	-	-		
PRINCESS ANNE	M	-	-	-	-	-	-	-	-	-	-	-	-	-	-	-	-	-	-	-	-	-	-	-	-	-	-	-	-	-	-	-	-		
SALISBURY 2N	3.56				1.78				0.03	0.60	0.04				0.10	0.77	0.01							0.13		0.07	0.03								
SALISBURY FAA AP	3.28			T	1.14			0.22	0.18	0.10				0.02	1.30	0.29			T	T			T	0.03		T	T								
SNOW HILL 4 N	3.79				0.40				0.20	1.18	0.07					1.80								0.02		0.10	0.02								
CENTRAL																																			
EASTERN SHORE 02																																			
ROYAL OAK 2 SSW	3.36			0.48	0.33					0.18	0.65					0.65	0.24				0.02				0.80		0.01								
LOWER SOUTHERN 03																																			
MECHANICSVILLE 5 NE	1.70			0.05	0.01					0.16	0.27	0.14				0.02	0.70								0.16	0.13		0.06	T						
SOLOMONS	M 3.24			0.21	-	-	-			0.26	1.30	0.16	-	-			0.86					0.22			0.11			0.12		-					
UPPER SOUTHERN 04																																			
BALTIMORE WASH INTL AP	2.80		0.48	0.35	0.13				0.19	T	T			0.35	0.23	0.84				T	T			0.12	T		0.03	0.08							
BELTSVILLE	3.09			0.21	0.64					0.26		0.10			0.26	0.13	1.40								0.04			0.03	0.02						
DALECARLIA RSVR	A 2.77			0.05	0.65									*	0.14 _a	0.35	1.50											0.08							
LAUREL 3 W	3.16		0.35	0.68					0.63		0.04			0.33		0.99	0.03												0.11						
MARYLAND SCIENCE CENTER	3.44		0.34	0.33	0.26				0.34		0.69			0.28	0.36	0.46							0.27	0.01				0.10							
NATL ARBORETUM DC	3.75			0.03	0.62	T				0.48	0.21	0.36	T		0.15	0.76	0.93							0.04			0.15	0.02							
OXON HILL	3.67			0.15	0.62					0.17	0.08	1.30			0.02	0.12	1.08				T			0.03	T		0.10	T							
UPPER MARLBORO 3 NNW	4.31				0.24						0.35	0.14	0.21			T	3.32								T		0.05								
NORTHERN CENTRAL 06																																			
ABERDEEN PHILLIPS FLD	4.24			0.28	0.42					0.15	0.29	0.02		0.03	0.38	0.82	0.99								0.64		T	0.22							
BRIGHTON DAM	2.99			0.10	0.40					0.34	0.03	0.21			0.84	0.35	0.39								0.30		T	0.03							
CONOWINGO DAM	2.79													0.55	0.27									0.87				1.10							
CYLBURN	A 2.75				0.51					0.27	0.02	0.24		*	*	1.03 _a	0.35							0.02	0.24				*	0.07 _a					
DAMASCUS 3 SSW	M 4.54		0.01	0.21	0.31				0.43		1.00		0.01	0.67	1.47	0.13	0.01			T			T	0.20	0.07		T	0.02							
EMMITSBURG 2 SE	3.95				0.42					0.23	0.07	0.25		0.09	0.19	0.35	0.01			T	T				0.60	0.01		0.27	1.45	0.01					
FREDERICK 2 NNE	M	-	-	-	-	-	-	-	-	-	-	-	-	-	-	-	-	-	-	-	-	-	-	-	-	-	-	-	-	-	-	-	-	-	
MILLERS 4 NE	4.34		0.02	0.32	0.29					0.30		0.04	T	0.25	0.69	0.30	0.05					0.03		T	0.56		0.02	0.01	1.46	T	T				
SMITHSBURG 2NW	M	-	-	-	-	-	-	-	-	-	-	-	-	-	-	-	-	-	-	-	-	-	-	-	-	-	-	-	-	-	-	-	-	-	
APPALACHIAN																																			
MOUNTAIN 07																																			
CUMBERLAND 2	5.50				0.80					0.30		2.21			0.21	0.34	0.06				0.34	0.02		0.33				0.70	0.16	0.02			0.01		
FROSTBURG 2	3.87				0.02			T		0.35		0.03			0.39	0.67	0.15				0.40	0.18	0.03	0.01		0.03		0.86	0.45	0.18			0.12		
SHARPSBURG 5 S	A 6.42	*	*	*	2.04 _a					0.42	0.04			0.14	1.34	0.43	0.25				0.06	0.05		T		1.18	*	*	*	*	0.47 _a				
WILLIAMSPORT	3.75		0.10	0.09	0.06					0.30		0.02			0.74	1.47					0.05				0.05		0.06	0.78						0.03	
ALLEGHENY PLATEAU 08																																			
OAKLAND 1 SE	7.35			0.03	0.02					0.39					0.54	0.58					0.20	0.08		1.35		1.03		1.95	0.78	0.40					
SAVAGE RIVER DAM	M 2.76	0.10		0.04						0.20					0.32	0.26	0.14				0.18	0.06		0.15		0.06		0.68	0.52	0.05				-	

DAILY PRECIPITATION (INCHES)

STATION	TOTAL	DAY OF MONTH																														
		01	02	03	04	05	06	07	08	09	10	11	12	13	14	15	16	17	18	19	20	21	22	23	24	25	26	27	28	29	30	31
SINES DEEP CREEK	MA 5.87	0.06			-	-	-	-	0.04	0.77			-	-	0.37	0.40	0.80	0.02		-	-	0.33			0.12		*	*	2.60 _a	0.33		0.03
DELAWARE NORTHERN 01																																
WILMINGTON NEW CASTLE CO AP	5.94		0.03	0.04	T				0.10	T	1.40	0.01		0.08	1.77	0.32	0.08			T	T			0.15	T		T	1.64	0.32			
WILMINGTON PORTER RES	3.43		0.12	0.13	T				0.13			0.13		T	0.30	0.21	0.13							0.55	T		0.05	T	1.68			
SOUTHERN 02																																
DOVER	3.51			0.05	0.81					0.50	0.51				0.09	0.14	0.94								0.43		0.04					
MILTON	M	-	-	-	2.17	-		-	-	-	-	-	-	-	-	-	-	-			0.11	-		-	-	-	0.17	-	-			

DAILY TEMPERATURES (°F)

STATION	OB. TIME	MAX/MIN	DAY OF MONTH																															AVERAGE			
			01	02	03	04	05	06	07	08	09	10	11	12	13	14	15	16	17	18	19	20	21	22	23	24	25	26	27	28	29	30	31				
MARYLAND SOUTHERN EASTERN SHORE 01 ASSATEAGUE	VA	MAX MIN																																			M M M
PRINCESS ANNE	17	MAX MIN																																		M M M	
SALISBURY 2N	17	MAX MIN	91 71	95 75	94 73	90 69	82 56	83 59	89 68	91 77	91 72	87 72	83 67	85 64	88 69	91 76	90 73	83 71	82 60	83 58	81 63	77 69	83 62	87 64	90 70	89 71	82 60	83 60	83 70	83 74	86 61	83 56	86 55	80 55	84 55	86.0 66.6	
SALISBURY FAA AP	24	MAX MIN	94 71	99 75	97 76	84 64	85 62	86 58	93 68	95 75	90 73	83 72	85 69	87 65	92 70	95 76	93 75	84 70	85 62	85 61	79 66	77 72	83 64	86 64	92 68	82 72	84 64	87 61	86 72	86 64	89 74	79 56	82 56	88 59	87.3 67.4		
SNOW HILL 4 N	17	MAX MIN	92 69	97 74	95 74	93 65	85 55	86 56	93 67	94 74	94 73	89 72	84 63	85 63	89 65	92 75	87 78	85 71	84 63	82 51	79 62	81 70	83 62	87 62	90 66	89 71	82 60	83 60	85 57	88 69	86 74	88 59	85 53	85 55	87.8 65.4		
CENTRAL EASTERN SHORE 02 ROYAL OAK 2 SSW	17	MAX MIN	90 74	93 77	91 73	88 70	82 65	86 64	91 74	94 76	88 72	83 70	84 68	87 69	90 73	92 76	90 64	81 72	82 61	84 59	79 65	80 67	84 66	86 67	91 73	83 71	81 62	85 63	85 74	86 78	79 66	79 58	85 61	85.8 68.6			
LOWER SOUTHERN 03 MECHANICSVILLE 5 NE	07	MAX MIN	89 64	88 69	92 70	88 71	80 57	80 57	85 61	90 69	92 69	85 67	80 67	82 67	86 71	90 72	90 67	80 58	80 57	81 58	78 64	78 67	82 65	83 68	91 71	74 57	80 57	84 65	81 70	84 61	84 53	81 53	77 53	83.7 64.3			
SOLOMONS	08	MAX MIN	83 74	89 76	90 74				91 65	92 77	95 73	88 68	80 69				88 76	80 71	81 66	82 67	79 71	79 71	80 71	83 73	90 73	80 66	84 70	85 71	83 75			76 62	84 67	84.8 71.0			
UPPER SOUTHERN 04 BALTIMORE WASH INTL AP	24	MAX MIN	91 71	93 73	89 72	80 63	82 55	86 58	91 72	93 69	88 70	84 68	86 64	87 67	92 73	89 72	88 71	81 64	81 61	83 57	80 66	81 70	83 69	85 69	94 70	81 61	83 57	88 63	89 72	86 65	89 59	86 55	81 55	87 59	85.7 65.5		
BELTSVILLE	08	MAX MIN	88 70	92 74	95 71	90 68	78 59	82 57	86 70	91 69	93 69	87 68	84 64	85 67	88 73	90 72	86 71	79 68	80 58	82 66	80 67	79 68	82 67	84 68	91 71	78 60	82 63	87 71	86 67	82 62	87 52	86 57	74 57	79 57	84.9 66.0		
DALECARLIA RSVR	08	MAX MIN	89 73	94 77	97 72	91 67	78 57	81 60	84 60	93 73	94 69	89 69	86 65	87 68	94 72	92 73	87 66	78 61	80 60	83 60	80 68	81 70	83 70	80 72	81 71	84 63	88 59	94 66	80 66	81 66	87 69	83 61	87 55	74 60	80 60	85.9 66.2	
LAUREL 3 W	24	MAX MIN	92 72	96 76	90 71	80 67	82 59	86 73	91 72	93 66	88 66	87 70	86 65	88 70	91 72	91 71	87 68	80 62	80 71	84 67	82 67	83 68	81 70	85 71	93 60	80 71	83 66	88 66	88 70	84 61	75 58	80 62	88 62	88 58	85.9 67.8		
MARYLAND SCIENCE CENTER	24	MAX MIN	91 74	95 75	91 73	80 69	84 64	87 66	93 75	95 71	89 73	85 71	86 69	88 74	93 73	89 72	88 71	82 68	82 67	83 73	81 71	82 72	82 73	87 73	96 73	81 65	84 71	87 65	84 73	87 69	86 65	81 61	87 66	87 66	86.6 70.3		
NATL ARBORETUM DC	07	MAX MIN	90 73	93 78	97 73	91 72	84 61	84 62	82 67	93 74	89 70	89 72	89 71	91 73	92 75	94 74	88 70	81 62	81 60	82 69	89 70	82 72	84 70	86 72	88 74	94 60	80 68	86 72	86 74	83 68	85 74	85 64	75 56	81 62	81 62	87.4 69.2	
OXON HILL	08	MAX MIN	88 68	92 70	96 72	90 71	80 61	84 60	88 63	91 70	94 70	87 69	84 66	85 67	89 71	93 72	87 68	80 64	81 63	83 62	80 68	80 69	82 69	86 69	92 71	79 62	84 61	88 69	85 70	84 69	88 70	84 61	84 56	84 56	85.9 66.5		
UPPER MARLBORO 3 NNW	08	MAX MIN	86 70	91 75	96 70	91 69	80 55	84 57	87 66	91 73	93 69	87 67	83 66	85 67	88 71	93 72	90 67	81 59	82 58	84 65	81 67	84 68	83 67	85 70	92 72	80 56	85 62	88 69	84 70	84 61	84 52	84 57	84 57	86.0 65.8			
NORTHERN CENTRAL 06 ABERDEEN PHILLIPS FLD	07	MAX MIN	87 70	90 74	92 74	89 70	77 61	81 59	84 64	91 73	93 71	87 68	84 67	86 67	86 67	87 71	87 72	85 70	81 65	81 58	82 58	79 65	81 68	84 70	85 71	92 60	82 61	79 66	85 66	86 66	83 60	86 66	83 60	74 56	79 57	84.5 66.1	

DAILY TEMPERATURES (°F)

STATION	OB. TIME	MAX/MIN	DAY OF MONTH																															AVERAGE	
			01	02	03	04	05	06	07	08	09	10	11	12	13	14	15	16	17	18	19	20	21	22	23	24	25	26	27	28	29	30	31		
BRIGHTON DAM	08	MAX	85	89	94	87	78	80	87	89	92	85	85	84	85	88	87	85	78	78	81	78	79	80	82	90	77	80	84	85	85	85	72	77	83.4
		MIN	67	71	70	67	53	55	65	67	65	65	64	65	69	69	71	65	56	55	55	64	66	65	67	56	56	68	66	58	50	56	63.1		
CONOWINGO DAM	07	MAX	84	91	87	87	87	87	88	89	86	83	86	85	86	84	83	79	80	80	77	81	81	85	89	80	80	81	85	82	77	77	83.5		
		MIN	70	73	69	61	57	57	57	67	68	64	64	67	70	70	68	61	58	58	58	58	66	67	69	59	56	64	65	62	56	56	62.9		
CYLBURN	08	MAX	82	88	90	87	81	78	84	89	90	87	82	87	86	88	90	87	85	83	79	77	75	78	82	90	78	77	82	85	80	70	83.0		
		MIN	70	74	72	68	58	59	68	72	68	69	66	68	72	70	76	74	70	60	62	65	67	69	69	69	60	61	69	67	60	55	66.6		
DAMASCUS 3 SSW	22	MAX	90	92	88	75	78	84	88	90	85	86	83	86	88	86	80	75	76	78	76	77	78	83	90	75	78	83	84	78	70	81.9			
		MIN	70	72	69	60	52	59	69	66	66	64	61	67	69	69	70	62	56	56	63	62	67	68	69	63	55	62	66	64	57	63.5			
EMMITSBURG 2 SE	07	MAX	90	90	93	89	77	82	85	89	89	85	86	85	87	87	84	82	78	79	81	80	82	81	86	92	79	81	86	87	79	83.9			
		MIN	66	69	69	67	59	56	56	70	67	66	63	62	65	69	69	57	54	54	64	62	66	66	66	68	56	55	60	65	60	62.2			
FREDERICK 2 NNE	07	MAX																														M			
		MIN																														M			
MILLERS 4 NE	18	MAX	89	91	87	74	79	82	87	89	86	85	84	85	86	85	82	78	77	81	79	77	79	83	89	85	79	83	87	83	75	82.6			
		MIN	67	72	69	63	55	57	68	69	64	64	61	64	68	67	69	64	57	52	62	61	64	64	67	66	52	60	67	63	55	62.5			
SMITHSBURG 2NW	08	MAX																														M			
		MIN																														M			
APPALACHIAN MOUNTAIN 07																																			
CUMBERLAND 2	18	MAX	93	96	94	90	85	86	89	93	94	87	85	87	92	90	85	83	80	81	83	76	81	86	90	95	81	85	91	89	76	86.3			
		MIN	68	72	69	65	56	58	59	67	68	61	62	64	66	67	70	59	55	55	55	65	67	69	69	57	59	64	68	56	52	62.7			
FROSTBURG 2	07	MAX	81	85	84	81	68	77	80	83	83	78	76	79	84	84	74	73	70	71	74	67	72	77	84	85	72	78	82	80	68	76.9			
		MIN	64	66	63	57	51	52	53	66	65	58	56	56	61	65	65	52	51	51	52	59	60	63	63	62	51	51	60	61	48	57.3			
SHARPSBURG 5 S	07	MAX	87	92	93	88	76	81	85	90	90	86	87	86	87	89	85	81	78	78	80	79	80	83	86	92	79	81	85	84	79	83.7			
		MIN	69	70	67	64	49	50	56	67	64	64	60	62	67	69	68	58	54	53	54	61	62	67	68	68	53	55	65	64	53	60.6			
WILLIAMSPORT	06	MAX	88	93	92	89	78	82	86	86	92	87	86	86	87	87	84	87	80	80	81	79	76	87	87							85.2			
		MIN	67	70	72	70	62	55	56	56	70	68	64	62	65	70	70	63	61	57	54	64	64	64	64							63.8			
ALLEGHENY PLATEAU 08																																			
OAKLAND 1 SE	07	MAX	83	85	83	81	70	70	79	82	84	85	81	79	82	88	84	83	69	71	73	71	73	79	84	85	73	75	80	79	66	77.8			
		MIN	62	67	60	58	42	43	47	47	64	56	57	58	63	68	68	68	48	47	50	59	60	62	62	61	48	49	60	61	51	56.0			
SAVAGE RIVER DAM	08	MAX	82	87	84	83	73	77	80	83	82	82	81	78	85	85	78	74	72	73	74	69	74	81	83	87	76	78	82	80	70	78.7			
		MIN	65	66	64	62	48	51	52	62	64	58	57	60	61	62	66	52	52	51	51	61	61	65	66	66	52	51	62	64	52	58.4			
SINES DEEP CREEK	07	MAX	81	84	81					81	82	76	79			82	74	70	69	70		74	78	81	83	79			80	65	70	M			
		MIN	61	61	59					42	62	53	53			55	57	49	47	46		46	60	59	60	49			49	48	43	43	M		
DELAWARE NORTHERN 01																																			
WILMINGTON NEW CASTLE CO AP	24	MAX	91	92	91	79	83	86	92	93	90	87	89	86	90	88	89	83	81	84	80	81	84	85	91	83	83	83	89	84	76	85.7			
		MIN	72	75	72	62	60	59	73	70	71	69	67	68	71	72	72	64	62	58	67	69	63	69	71	66	58	64	70	66	60	62	66.4		
WILMINGTON PORTER RES	24	MAX	94	95	90	75	81	85	92	95	89	84	86	89	92	91	89	82	81	84	79	81	85	90	94	81	82	80	91	91	75	84	86.0		
		MIN	71	74	71	65	60	61	71	70	69	71	67	67	71	71	72	68	64	62	67	67	64	68	70	69	60	65	71	67	61	59	62	66.9	
DELAWARE SOUTHERN 02																																			
DOVER	16	MAX	90	95	94	90	80	85	90	92	91	86	85	83	89	91	90	85	82	84	83	77	83	86	91	90	83	83	85	83	83	80	86	86.3	

DAILY TEMPERATURES (°F)

STATION	OB. TIME	MAX/MIN	DAY OF MONTH																															AVERAGE
			01	02	03	04	05	06	07	08	09	10	11	12	13	14	15	16	17	18	19	20	21	22	23	24	25	26	27	28	29	30	31	
		MIN	70	75	70	67	60	62	69	74	70	72	69	67	70	74	73	69	62	60	63	66	66	66	68	64	60	64	68	73	62	58	61	66.8

TOTAL SNOWFALL AND NUMBER OF DAYS WITH ONE INCH OR MORE ON GROUND

MARYLAND AND DELAWARE

201407

STATION	JUL		AUG		SEP		OCT		NOV		DEC		JAN		FEB		MAR		APR		MAY		JUN		TOTAL		TOTAL PRECIPITATION	
	SNOWFALL	1 IN ON GD	SNOWFALL	1 IN ON GD	SNOWFALL	1 IN ON GD	SNOWFALL	1 IN ON GD	SNOWFALL	1 IN ON GD	SNOWFALL	1 IN ON GD	SNOWFALL	1 IN ON GD	SNOWFALL	1 IN ON GD	SNOWFALL	1 IN ON GD	SNOWFALL	1 IN ON GD	SNOWFALL	1 IN ON GD	SNOWFALL	1 IN ON GD	SNOWFALL	1 IN ON GD		
MARYLAND																												
SOUTHERN EASTERN SHORE 01																												
ASSATEAGUE																										0.0	0	0.00
PRINCESS ANNE																										0.0	0	M 9.10
SALISBURY 2N													13.0	8	M 0.4		M 8.9								M 22.3	M 8	43.72	
SALISBURY FAA AP												T	11.5	5	T		11.0								22.5	M 5	32.88	
SNOW HILL 4 N												M T	M 10.5	9	M T		M 12.0	6						M 22.5	M 15	M 42.56		
CENTRAL EASTERN SHORE 02																												
ROYAL OAK 2 SSW									T		1.0	1	13.0	14	5.9		11.6	6							31.5	21	44.86	
LOWER SOUTHERN 03																												
MECHANICSVILLE 5 NE	M 0.0		M 0.0		M 0.0		M 0.0		M 0.0				M 10.5	12	M 7.6	6	M 11.5	9	M 0.0		M 0.0				M 29.6	M 27	M 49.11	
SOLOMONS													M 7.4	4	M 3.4	2	M 5.7	5							M 17.0	M 11	M 0.00	
UPPER SOUTHERN 04																												
BALTIMORE WASH INTL AP									T		2.9	4	9.8	9	14.2	8	12.1	4	T						39.0	25	48.83	
BELTSVILLE							M 0.0		T		1.3	1	7.5	8	14.2	11	12.5	7	T					M 35.5	M 27	43.02		
DALECARLIA RSVR			M 0.0		M 0.0						M 4.5	2	FM 4.7	2	F 12.4	3	M 14.5	4			M 0.0				M 19.0	M 11	M 43.24	
LAUREL 3 W											M 1.4				M 1.5		M 1.5								M 4.4	0	53.32	
MARYLAND SCIENCE CENTER															M 0.0										M 0.0	M 0	49.32	
NATL ARBORETUM DC							M 0.0		M 0.0		M 1.6	1	M 7.4	6	M 6.8	3	M 12.8	5	M 0.0		M 0.0				M 28.6	M 15	M 36.97	
OXON HILL							M 0.0		T		2.6	2	9.4	12	13.2	10	12.0	9	M T		M 0.0				M 37.2	M 33	44.09	
UPPER MARLBORO 3 NNW											M 1.9	2	M 8.5	10	M 12.1	9	M 10.3	6							M 32.8	M 27	M 49.18	
NORTHERN CENTRAL 06																												
ABERDEEN PHILLIPS FLD											8.0	6	14.5	9	M 5.4	8	M 10.3	4							M 38.2	M 27	41.35	
BRIGHTON DAM									F 0.0		6.0	3	M 13.0	3	19.0	4	15.0	4							M 53.0	M 14	48.29	
CONOWINGO DAM					M 0.0						M 6.0	10	M 44.0	10	M 21.0	16	M 7.0	7							M 78.0	M 33	58.34	
CYLBURN											M 2.0		M 10.4	9	M 17.8	10	M 0.6	5							M 30.8	M 24	M 23.66	
DAMASCUS 3 SSW			M 0.0					0.1			9.4	12	14.3	15	28.3	12	21.9	11	T						M 74.0	M 50	M 53.63	
EMMITSBURG 2 SE											M 13.0	2	9.5		FM 19.0	9	14.0	7							M 36.5	M 18	47.51	
FREDERICK 2 NNE																									0.0	0	0.00	
MILLERS 4 NE									0.5		17.0	13	15.9	15	35.9	27	13.8	12	0.3						83.4	67	57.89	
SMITHSBURG 2NW											M 5.5														M 5.5	0	0.00	
WESTMINSTER																									0.0	0	0.00	
APPALACHIAN MOUNTAIN 07																												
CUMBERLAND 2											M 8.5	8	M 7.3	14	M 23.6	22	M 6.6	3								M 46.0	M 47	M 35.28
FROSTBURG 2							M 0.1		M 2.5	7	M 10.3	15	M 14.4	20	41.9	28	M 12.1	18	M 0.2						M 81.5	M 88	38.44	
SHARPSBURG 5 S											M T		M 12.6	11			M 7.5	3							M 20.1	M 14	M 30.35	
WILLIAMSPORT	M 0.0		M 0.0				M 0.0		M 0.0		M 5.3	1	M 8.4	3	M 12.6	4	M 3.8	1	M 0.0		M 0.0				M 30.1	M 9	M 35.11	
ALLEGHENY PLATEAU 08																												
OAKLAND 1 SE								1.5		M 9.1	6	22.5	14	M 45.5	16	45.0	27	17.1	15	0.1					M 140.8	M 78	M 49.09	
SAVAGE RIVER DAM										M T		M 2.2	12	M 9.0	14	M 32.0	23	M T	12						M 43.2	M 61	M 28.38	
SINES DEEP CREEK							M 1.0	1	M 2.2	3	M 19.5	10	M 30.5	19	M 50.6	21	M 20.2	12	M 0.6	1					M 124.6	M 67	M 46.26	
DELAWARE																												
NORTHERN 01																												
WILMINGTON NEW CASTLE CO AP	M 0.0								T		M 11.9	6	17.5	13	19.0	15	7.7	6							M 56.1	40	48.65	
WILMINGTON PORTER RES											7.5	3	M 12.3	12	M 18.0	6	M 4.2	2							M 42.0	M 23	M 46.98	
SOUTHERN 02																												
DOVER			M 0.0						M T		M 1.0		M 15.3	1	M 7.2		M 12.0	4							M 35.5	M 5	9.37	

MONTHLY AND SEASONAL HEATING DEGREE DAYS

STATION	JUL	AUG	SEP	OCT	NOV	DEC	JAN	FEB	MAR	APR	MAY	JUN	TOTAL	SEASONAL NORM
MARYLAND														
SOUTHERN EASTERN SHORE 01														
PRINCESS ANNE	0	0	32E	112E	454E	766E	954E	735E	672E	245E			M 3970E	
SALISBURY 2N	0	0	48	175	542	672	974	777E	702E	301E	48	8E	M 4247E	
SALISBURY FAA AP	0	0	27	161	517	670	1010	755	689	292	50	5	4176	
SNOW HILL 4 N	0	0	53	177	543	668	970	756	677	325	53	11	4233	
CENTRAL EASTERN SHORE 02														
ROYAL OAK 2 SSW	0	0	61	208	557	744	1036	819	750	294	52	2	4523	
LOWER SOUTHERN 03														
MECHANICSVILLE 5 NE	0	4	97	265	644	787	1130	849	815	366	84E	4	5045E	
SOLOMONS	0	0	8E	177E	499E	682E	977E	847E	868E	260E	51E	0	4369E	
UPPER SOUTHERN 04														
BALTIMORE WASH INTL AP	0	0	52	237	636	783	1157	892	813	360	74	2	5006	
BELTSVILLE	0	2	58	372E	642	801	1157	878	854	352	89	5	5210E	
DALECARLIA RSVR	0	0	55E	245E	613	784E	1128	858	831	321	76E	0	4911E	
LAUREL 3 W	0	0	31	201	618	785	1143	858	757	338	59	0	4790	
MARYLAND SCIENCE CENTER	0	0	5	122	498	669E	1075	826	734	285	37	0	4251E	
NATL ARBORETUM DC	0	0	29	189	575	699E	1085E	841E	775	263E	29E	0	4485E	
OXON HILL	0	0	40	219	610	761	1104	827	787	300	63	0	4711	
UPPER MARLBORO 3 NNW	0	1E	62	244	588E	779	1143	866	842	353	77	3	4958E	
NORTHERN CENTRAL 06														
ABERDEEN PHILLIPS FLD	0	0	75	240	629	823	1176	914	882	386	86	7	5218	
BRIGHTON DAM	0	0	95E	295	683E	863E	1218E	939E	908E	411E	104	7	5523E	
CONOWINGO DAM	0	2	100	278	716	950	1262	998	944	455	127	8	5840	
CYLBURN	0	1	91	273	648	702E	1154E	901	903E	377E	106	3	5159E	
DAMASCUS 3 SSW	0	3E	97	292	700	857	1191	946	870	396	119	2	5473E	
EMMITSBURG 2 SE	0	8	129	295	687	900	1267	979	939	412	128	5	5749	
MILLERS 4 NE	0	7	109	305	703	903	1221	999	870	412	115	8	5652	
SMITHSBURG 2NW						989E							M 989E	
WESTMINSTER	0	41E											M 41E	
APPALACHIAN MOUNTAIN 07														
CUMBERLAND 2	0	4	76	288	698	871	1267	956	869	365	121	5E	5520E	
FROSTBURG 2	15E	47	191	423	887	1024	1431	1132	1083	521	250	33E	7037E	
SHARPSBURG 5 S	0	12	123	324	739E	922E			845E	444	163	8	M 3580E	
WILLIAMSPORT	0	2E	76	278	684E	878	1248E	945E	875	360E	109	0	5455E	
ALLEGHENY PLATEAU 08														
OAKLAND 1 SE	19	51	200	443	830E	961	1353E	1102	1081	536	258	39	6873E	
SAVAGE RIVER DAM	4E	28E	145E	442E	843E	974E	1347E	1091	1022E	496E	238E	29E	6659E	
SINES DEEP CREEK	25E	66	221E	460E	913	1054	1427E	1166	1068	561E	293E	39E	7293E	
DELAWARE														
NORTHERN 01														
WILMINGTON NEW CASTLE CO AP	0	0	69	227	625	843	1157	934	820	374	76	2	5127	4888
WILMINGTON PORTER RES	0	0	65E	263	617E	870	1187E	970	878E	381	85	3E	5319E	
SOUTHERN 02														
DOVER	0	0	44	207	568	732	1032E	860	766	334	64	4	4611E	4212

SNOWFALL AND SNOW ON GROUND (INCHES)

STATION		DAY OF MONTH																															
		01	02	03	04	05	06	07	08	09	10	11	12	13	14	15	16	17	18	19	20	21	22	23	24	25	26	27	28	29	30	31	
MARYLAND SOUTHERN EASTERN SHORE 01 ASSATEAGUE PRINCESS ANNE SALISBURY 2N SALISBURY FAA AP SNOW HILL 4 N	SNOWFALL																																
	SNOWFALL																																
	SNOWFALL																																
	SNOWFALL																																
	SN ON GND																																
	SNOWFALL																																
DELAWARE NORTHERN 01 WILMINGTON NEW CASTLE CO AP WILMINGTON PORTER RES	SNOWFALL																																
	SN ON GND																																
	SNOWFALL																																
	SN ON GND																																

Snowfall: Includes snow and ice. Values for NWS stations (J index note) are Mid-Mid (LST).

Snow on ground: Includes snow, sleet, ice, and hail. Values for NWS stations (J index note) are observed at 12 UTC (GMT).

Water Equivalent: Given for NWS stations (J index note) only, when snow depth is 2 inches or more, and is measured at 18 UTC (GMT)

PAN EVAPORATION AND WIND

STATION		DAY OF MONTH																															TOTAL OR AVERAGE
		01	02	03	04	05	06	07	08	09	10	11	12	13	14	15	16	17	18	19	20	21	22	23	24	25	26	27	28	29	30	31	
MARYLAND UPPER SOUTHERN 04 BELTSVILLE	WIND	50	63	42	76	66	34	61	81	66	33	35	26	70	69	34	40	54	36	23	32	30	26	35	56	36	36	38	62	112	50	31	1503
	EVAP	0.24	0.30	0.27	0.29	0.27	0.28	0.28	0.38	0.32	0.16	0.13	0.18	0.21	0.29	0.19	0.33	0.27	0.25	0.20	0.22	0.15	0.19	0.15	0.20	0.15	0.23	0.20	0.20	0.35	0.23	0.20	7.31
	MAX	81	81	92	92	80	85	80	80	80	80	76	80	85	88	90	84	81	82	85	82	80	86	84	89	78	86	88	88	79	74	82	83.4
	MIN	64	69	70	66	54	56	60	66	66	66	63	64	67	70	70	66	60	61	62	66	67	68	68	68	58	58	66	68	58	54	55	63.7
UPPER MARLBORO 3 NNW	WIND	-	-	-	-	-	-	-	-	-	-	-	-	-	-	-	-	-	-	-	-	-	-	-	-	-	-	-	-	-	-	M	
	EVAP	-	-	-	-	-	-	-	-	-	-	-	-	-	-	-	-	-	-	-	-	-	-	-	-	-	-	-	-	-	-	M	
	MAX	-	-	-	-	-	-	-	-	-	-	-	-	-	-	-	-	-	-	-	-	-	-	-	-	-	-	-	-	-	-	M	
	MIN	-	-	-	-	-	-	-	-	-	-	-	-	-	-	-	-	-	-	-	-	-	-	-	-	-	-	-	-	-	-	M	
ALLEGHENY PLATEAU 08 SAVAGE RIVER DAM	WIND	-	-	-	-	-	-	-	-	-	-	-	-	-	-	-	-	-	-	-	-	-	-	-	-	-	-	-	-	-	M		
	EVAP	-	-	-	-	-	-	-	-	-	-	-	-	-	-	-	-	-	-	-	-	-	-	-	-	-	-	-	-	-	M		
	MAX	-	-	-	-	-	-	-	-	-	-	-	-	-	-	-	-	-	-	-	-	-	-	-	-	-	-	-	-	-	-		
	MIN	-	-	-	-	-	-	-	-	-	-	-	-	-	-	-	-	-	-	-	-	-	-	-	-	-	-	-	-	-	M		

Evaporation: Is measured in hundreths of inches.

Wind: Is measured in miles.

Max and Min: The maximum and minimum temperatures (Fahrenheit) of the water in the evaporation pan.

STATION INDEX

STATION	INDEX NO.	DIVISION	COUNTY	LATITUDE	LONGITUDE	ELEVATION (IN FEET)	OBSERVATION TIME AND TABLES			
							LOCAL STD TIME			
							TEMP	PRECIP	EVAP	SPECIAL SEE (NOTES)
MARYLAND										
ABERDEEN PHILLIPS FLD	0015	06	HARFORD	39 28	76 10W	57	07	07		CH
ASSATEAGUE	0335	01	WORCESTER	38 4	75 13W	10	VAR	VAR		H
BALTIMORE WASH INTL AP R	0465	04	ANNE ARUNDEL	39 10	76 41W	156	24	24		HJ
BELTSVILLE	0700	04	PRINCE GEORGE'S	39 2	76 56W	145	08	08	08	CH
BRIGHTON DAM	1125	06	MONTGOMERY	39 11	77 0W	330	08	08		H
CONOWINGO DAM	2060	06	HARFORD	39 39	76 11W	40	07	07		H
CUMBERLAND 2	2282	07	ALLEGANY	39 39	78 45W	730	18	18		H
CYLBURN	2308	06	BALTIMORE	39 21	76 39W	235	08	08		H
DALECARLIA RSVR	2325	04	DISTRICT OF COLUMBIA	38 56	77 7W	150	08	08		H
DAMASCUS 3 SSW	2336	06	MONTGOMERY	39 16	77 14W	700	22	22		H
EMMITSBURG 2 SE	2906	06	FREDERICK	39 41	77 17W	403	07	07		H
FREDERICK 2 NNE	3353	06	FREDERICK	39 26	77 24W	280	07	07		H
FROSTBURG 2	3415	07	ALLEGANY	39 40	78 56W	2170	07	07		H
LAUREL 3 W	5111	04	PRINCE GEORGE'S	39 5	76 54W	400	24	24		H
MARYLAND SCIENCE CENTER R	5718	04	BALTIMORE (CITY)	39 17	76 37W	20	24	24		H
MECHANICSVILLE 5 NE	5865	03	ST. MARY'S	38 28	76 42W	100	07	07		H
MILLERS 4 NE	5934	06	CARROLL	39 43	76 48W	860	18	18		CH
NATL ARBORETUM DC	6350	04	DISTRICT OF COLUMBIA	38 55	76 58W	50	07	07		H
OAKLAND 1 SE	6620	08	GARRETT	39 25	79 24W	2420	07	07		H
OXON HILL	6800	04	PRINCE GEORGE'S	38 47	76 60W	120	08	08		H
PRINCESS ANNE	7330	01	SOMERSET	38 13	75 41W	20	17	17		H
ROYAL OAK 2 SSW	7806	02	TALBOT	38 43	76 11W	10	17	17		H
SALISBURY 2N	8004	01	WICOMICO	38 24	75 36W	20	17	17		H
SALISBURY FAA AP	8005	01	WICOMICO	38 20	75 31W	48	24	24		H
SAVAGE RIVER DAM	8065	08	GARRETT	39 31	79 8W	1495	08	08	08	CH
SHARPSBURG 5 S	8207	07	WASHINGTON	39 24	77 43W	500	07	07		H
SINES DEEP CREEK	8315	08	GARRETT	39 31	79 25W	2040	07	07		H
SMITHSBURG 2NW	8371	06	WASHINGTON	39 40	77 35W	670	08	08		H
SNOW HILL 4 N	8380	01	WORCESTER	38 14	75 23W	30	17	17		H
SOLOMONS	8405	03	CALVERT	38 19	76 27W	12	08	08		H
UPPER MARLBORO 3 NNW	9070	04	PRINCE GEORGE'S	38 51	76 46W	130	08	08	08	H
WILLIAMSPORT	9570	07	WASHINGTON	39 37	77 51W	360	06	06		H
DELAWARE										
DOVER	2730	02	KENT	39 9	75 30W	30	16	16		H
MILTON #	6102	02	SUSSEX	38 49	75 12W	4		08		H
WILMINGTON NEW CASTLE CO AP R	9595	01	NEW CASTLE	39 40	75 36W	79	24	24		HJ
WILMINGTON PORTER RES	9605	01	NEW CASTLE	39 46	75 32W	270	24	24		H

REFERENCE NOTES

STATION NAMES: Name of the city, town or locality. Figures and letters following the station names indicate the distance in miles and direction from the post office or town community center.

DIVISIONS: Areas within a state of similar climatological characteristics. Division averages are calculated using data from stations that record temperature and/or precipitation. Station Precipitation totals flagged with an 'F' or 'M' are excluded from the Divisional Average calculations of precipitation. Stations with monthly Temperature averages flagged with an 'F' or 'M' are included in the Divisional Average if there are no more than 9 flagged or missing daily values in the month, else they are excluded from the divisional average for temperature.

NORMALS: The average value of the meteorological element over a time period. Effective 1 January 2012, the averaging period is 1981 to 2010. The normals for National Weather Service localities have been adjusted so as to be representative for the current observation site.

MONTHLY DEGREE DAY TOTALS: One heating (cooling) degree day is accumulated for each whole degree that the daily mean temperature is below (above) 65 degrees Fahrenheit.

PRECIPITATION: Values shown in hundredths of inches are water equivalent totals, i.e., total of liquid and melted frozen precipitation. In the "Monthly Summarized Data" table the total snow and sleet values shown in tenths of inches are unmelted amounts. The max depth on ground values of snow and sleet shown in whole inches are cumulative unmelted amounts. The number of days with .10, .50, 1.00 or more refers to water equivalents.

PRECIPITATION QUALITY CONTROL: The NCDC quality control process may flag precipitation data that are spatially inconsistent, exceed climatological limits, or are inconsistent with prevailing weather patterns.

TEMPERATURE: Original temperature values are given in the "Daily Temperature" table. Summary temperature information (averages, departures, extremes, monthly degree day totals) is based on the values labeled MAX/MIN.

WIND: (As shown in the "Evaporation and Wind" table) the total wind movement in miles over the evaporation pan as determined by an anemometer recorder located 6-8 inches above the pan.

SYMBOLS AND LETTERS USED IN THE STATION INDEX TABLE

- C Station is equipped with recording rain gage (R) but values in this bulletin are from a non-recording rain gage unless indicated by an R.
- G Observations appear in the "Soil Temperatures" table.
- H Observations appear in the "Snowfall and Snow on the Ground" table.
- J Station also published as a Local Climatological Data publication.
- VAR Observation time varies.
- SR Observation time near sunrise.
- SS Observation time near sunset.

SYMBOLS AND LETTERS USED IN THE DATA TABLES

- (DAILY DATA ARE FOR THE 24 HOURS IMMEDIATELY PRECEDING OBSERVATION TIME.)
- BLANK Entries in the "Monthly Summarized Data" table indicate no record.
- BLANK Entries in the "Daily Precipitation" and "Snowfall and Snow on the Ground" tables indicate zero.
- BLANK Entries in the "Daily Temperature" table indicate a missing record

- No record. Data not recorded or not received in time for publication.
- + Precipitation or temperature extremes occurred on one or more previous dates during the month.
- * Rain gage not read. Precipitation is included in the amount following the asterisks. Time distribution may not be known. A * preceding the monthly total indicates precipitation amount is being carried forward to next month's total, and may include amounts from the previous month(s).
- a As a subscript, indicates accumulated total.

by NCDC's Climate Prediction Branch. Entries for the report. If the data is not available, please contact the station for more information. For stations that have been discontinued, please refer to the "Local Climatological Data" annual publication. The contents of this publication may be reprinted or otherwise used freely, with proper credit to the National Climatic Data Center. The data are also available digitally.

- A Monthly climatic data for the month of the year.
- B Divisional Departure from normals are computed using 1981-2010 normals.
- E Normalized HDD/CDD Calculation. E is appended to the HDD/CDD Calculation when 1-9 individual daily TMAX and/or TMIN values are missing and a Normalized HDD/CDD Calculation is provided. M appears alone if 10 or more daily values are missing.
- F Monthly calculation flagged value. F is appended to average and/or total values computed which exclude one or more daily data values that have been flagged by the GHCN-Daily Dataset
- M Insufficient or partial data. M is appended to average and/or total values computed with 1-9 daily values missing. M appears alone if 10 or more daily values are missing, (8 or more for wind and evaporation).
- N Indicates snow fall or Snowdepth totals are computed with one or more missing days.
- R Amounts from recording rain gage.
- T Trace. An amount too small to measure.

SEASONAL TABLES: Monthly and seasonal snowfall and heating degree days for the 12 months ending with the June data are published in the July issue of this bulletin. Cooling degree days for the calendar year are published in the "Climatological Data Annual Summary."

Information concerning the history of changes in locations, exposure, etc. of substations is kept on file at the National Climatic Data Center. Historical information of regular National Weather Service Offices may be obtained from the "Local Climatological Data" annual publication. The contents of this publication may be reprinted or otherwise used freely, with proper credit to the National Climatic Data Center. The data are also available digitally.

Effective with the January 2011 Data-Month, COOP Observer Names are no longer included in the Monthly and Annual Climatological Data Publications. This information is not published to ensure the privacy of personal information pursuant to Section 208 of the E-Government Act of 2002 (44 USC 3601).

As of the 2011 Data-Year, Station and Climate Division Maps are no longer being included in the CD Publications. NCDC's Product Development Branch provides updated Station Maps for various data networks via the Historical Observing Metadata Repository: <http://www.ncdc.noaa.gov/homr>.

The GHCN-Daily Quality Control Flags shown below are displayed as superscripts with the data. For more Information on Global Historical Climatology Network - Daily and flags, see: <http://www.ncdc.noaa.gov/oa/climate/ghcn-daily/> and Comprehensive Automated Quality Assurance of Daily Surface Observations. Durre, Imke, Matthew J. Menne, Byron E. Gleason, Tamara G. Houston, Russell S. Vose, 2010: J. Appl. Meteor. Climatol., 49, 1615-1633. doi: 10.1175/2010JAMC2375.1

- Blank = Passed All checks
- D = failed duplicate check
- G = failed gap check
- I = failed internal consistency check
- K = failed streak/frequent-value check
- L = failed check on length of multiday period
- M = failed megaconsistency check
- N = failed naught check
- O = failed climatological outlier check
- R = failed lagged range check
- S = failed spatial consistency check
- T = failed temporal consistency check
- W = temperature too warm for snow
- X = failed bounds check
- Z = flagged as a result of an official Datzilla investigation

Beginning with the January 2013 CD Publication, monthly mean temperature calculations have changed to the National Data Stewardship Team standard. Monthly maximum and minimum temperatures are not rounded until after the monthly mean temperature is calculated. This is the most accurate outcome, but may be slightly different from the mean derived from rounded monthly maximum and minimum.

Processing Updates and Errata: The CD Publications are periodically reproduced to include the addition of late reports and reported corrections. The GHCND data version noted on the cover of the publication provides the generation date.

The climate division temperature and precipitation values in this publication are based on simple averages from the current set of NWS-Designated Open and Published COOP and First Order Sites within each division. These values differ from those found in NCDC's nClimDiv product. Beginning in February 2014, the nClimDiv product is used

These and other publications are available from the National Climatic Data Center

Hourly Precipitation Data

This publication contains hourly precipitation amounts obtained from recording rain gages located at National Weather Service, Federal Aviation Administration, and cooperative observer stations. Published data are displayed in inches and tenths or inches and hundredths at local standard time. HPD includes maximum precipitation for nine (9) time periods from 15 minutes to 24 hours, for selected stations.

Climatological Data

Monthly editions contain station daily maximum and minimum temperatures and precipitation. Some Stations provide daily snowfall, snow depth, evaporation, and soil temperature data. Each edition also contains monthly summaries for heating and cooling degree days (65 degree F base). The July issue contains a recap of monthly heating degree days and snow data for the preceding July through June.

The Annual issue contains monthly and annual averages of temperature, precipitation, temperature extremes, freeze data, soil temperatures, evaporation, and a recap of monthly cooling degree days.

Storm Data

Monthly issues contain a chronological listing, by states, of occurrences of storms and unusual weather phenomena. Reports contain information on storm paths, deaths, injuries, and property damage. An "Outstanding storms of the month" section highlights severe weather events with photographs, illustrations, and narratives. The December issue includes annual tornado, lightning, flash flood, and tropical cyclone summaries.

Monthly Climatic Data for the World

This publication contains monthly means for temperature, pressure, precipitation, vapor pressure, and sunshine for approximately 2,000 surface data collection stations worldwide and monthly mean upper air temperatures, dew point depressions, and wind velocities for approximately 500 observing sites.

Local Climatological Data

LCD publications summarize temperature, relative humidity, precipitation, cloudiness, wind speed and direction observations for several hundred cities in the U.S. and its territories. Each monthly publication also contains 3 hourly weather observations for that month and a hourly summary of precipitation. Annual LCD publications contain a summary of the past calendar year as well as historical averages and extremes.

For Information Call:

(828) 271-4800 Option 2

(828) 271-4010 (TDD)

(828) 271-4876 (Fax)

NOAA\National Climatic Data Center
Attn: User Engagement & Services Branch
151 Patton Avenue
Asheville, NC 28801-5001

Customer Services Number: (828) 271-4800, option 2
TDD : (828) 271-4010
Fax number: (828) 271-4876

NCDC now offers free online access to the *Climatological Data* publication.
Go to : www.ncdc.noaa.gov and choose Most Popular.