



CLIMATOLOGICAL DATA

MARYLAND AND DELAWARE

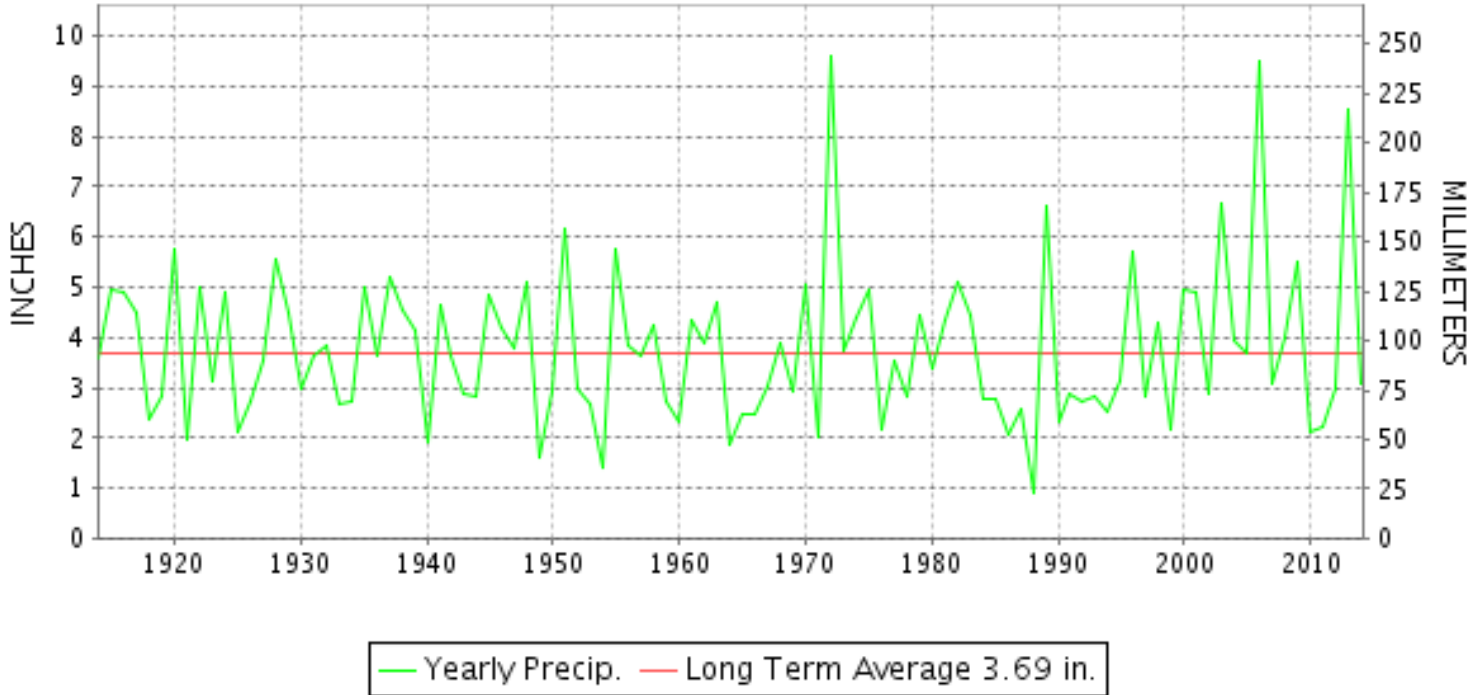
JUNE 2014

VOLUME 118 NUMBER 06

ISSN 0145-0549

GHCND Ver: 3.12-upd-2014092405

JUNE PRECIPITATION BY YEAR



TEMPERATURE AND PRECIPITATION EXTREMES

MARYLAND

HIGHEST TEMPERATURE	99	JUNE 18	SNOW HILL 4 N
LOWEST TEMPERATURE	41	JUNE 02+	SNOW HILL 4 N
GREATEST TOTAL PRECIPITATION	6.77		MARYLAND SCIENCE CENTER
LEAST TOTAL PRECIPITATION	0.84		SALISBURY FAA AP
GREATEST 1 DAY PRECIPITATION	2.21	JUNE 13	CUMBERLAND 2

"I certify that this is an official publication of the National Oceanic and Atmospheric Administration (NOAA) It is compiled using information from weather observing sites supervised by NOAA/National Weather Service and received at the National Climatic Data Center(NCDC), Asheville, North Carolina 28801."

Director
National Climatic Data Center

noaa

National
Oceanic and
Atmospheric Administration

National
Environmental Satellite, Data
and Information Service

National
Climatic Data Center
Asheville, North Carolina

DELAWARE

HIGHEST TEMPERATURE	94	JUNE 18
LOWEST TEMPERATURE	48	JUNE 01
GREATEST TOTAL PRECIPITATION	5.03	
LEAST TOTAL PRECIPITATION	3.15	
GREATEST 1 DAY PRECIPITATION	2.01	JUNE 10

DOVER
DOVER
WILMINGTON NEW CASTLE CO AP
WILMINGTON PORTER RES
WILMINGTON NEW CASTLE CO AP

MONTHLY STATION AND DIVISION SUMMARY

STATION	TEMPERATURE (°F)											PRECIPITATION (IN)															
	AVERAGE MAXIMUM	AVERAGE MINIMUM	AVERAGE	DEPARTURE FROM NORMAL	HIGHEST	DATE	LOWEST	DATE	HEATING DEG. DAYS	COOLING DEG. DAYS	NO. OF DAYS				TOTAL	DEPARTURE FROM NORMAL	GREATEST 24 HOURS	DATE	ICE PELLETS, SNOW			NO. OF DAYS					
											MAX		MIN						TOTAL	MAX DEPTH ON GROUND	DATE	.10 OR MORE	.50 OR MORE	1.00 OR MORE			
											>=90	<=32	<=32	<=0													
MARYLAND SOUTHERN EASTERN SHORE 01																											
ASSATEAGUE	M	M	M								0	0	0	0	M				0.0								
PRINCESS ANNE	M	M	M								0	0	0	0	M				0.0								
SALISBURY 2N	84.3M	62.4	73.3M		95	18	46	03+	8E	261E	3	0	0	0	1.07		0.44	05	0.0				4	0	0		
SALISBURY FAA AP	85.9	62.9	74.4	2.4	98	18	44	02	5	293	8	0	0	0	0.84	-2.87	0.52	04	0.0	0			2	1	0		
SNOW HILL 4 N	86.3	62.5	74.4	0.8	99	18	41	02+	11	302	5	0	0	0	1.55	-1.92	0.95	05	0.0				3	1	0		
--DIVISIONAL DATA----->			74.0	2.2B											1.15	-2.23B											
CENTRAL EASTERN SHORE 02																											
ROYAL OAK 2 SSW	83.3	64.7	74.0	-0.5	94	18	50	01	2	278	2	0	0	0	2.79	-1.07	1.09	12	0.0	0				5	3	1	
--DIVISIONAL DATA----->			74.0	1.1B											2.79	-0.76B											
LOWER SOUTHERN 03																											
MECHANICSVILLE 5 NE	82.1	60.6	71.3	0.0	92	18	49	02	4	201	2	0	0	0	2.56	-1.51	1.04	12	0.0					7	2	1	
SOLOMONS	84.0M	68.0M	76.0M	0.5	94	19	56	02	0	334E	2	0	0	0	MA 3.67		1.30	11	0.0					6	3	1	
--DIVISIONAL DATA----->			73.7	2.0B											2.56	-1.22B											
UPPER SOUTHERN 04																											
BALTIMORE WASH INTL AP	83.0	63.3	73.2	0.8	96	18	50	01	2	256	3	0	0	0	3.95	0.49	1.50	19	0.0	0				10	2	1	
BELTSVILLE	82.6	63.5	73.0	0.1	93	19+	51	02+	5	252	3	0	0	0	2.86	-0.84	0.57	14	0.0	0				7	3	0	
DALECARLIA RSVR	84.3	64.7	74.5	0.4	95	18	54	02+	0	294	4	0	0	0	2.95	-1.26	0.96	09	0.0	0				6	2	0	
LAUREL 3 W	83.7	65.0	74.3	0.5	94	18	54	01	0	288	3	0	0	0	4.45	0.22	1.43	19	0.0					8	2	2	
MARYLAND SCIENCE CENTER	83.3	68.0	75.7	-0.4	95	18+	59	02+	0	328	2	0	0	0	6.77	3.50	2.01	19	0.0					8	4	2	
NATL ARBORETUM DC	86.7	67.0	76.9	1.8	95	19	55	02+	0	362	10	0	0	0	4.88	0.80	1.27	11	0.0					7	3	3	
OXON HILL	83.9	63.4	73.6	-0.8	93	19+	52	02	0	264	3	0	0	0	3.01	-1.35	0.75	19	0.0	0				7	3	0	
UPPER MARLBORO 3 NNW	83.2	63.1	73.2	0.5	95	18	50	01	3	256	2	0	0	0	3.29	-0.78	1.43	11	0.0					7	2	1	
--DIVISIONAL DATA----->			74.3	2.0B											4.02	0.36B											
NORTHERN CENTRAL 06																											
ABERDEEN PHILLIPS FLD	81.6	63.2	72.4	0.2	95	19	50	01	7	236	2	0	0	0	4.01	0.19	0.85	26	0.0	0					8	4	0
BRIGHTON DAM	81.2	61.1	71.2		90	19+	50	02+	7	201	2	0	0	0	3.02		0.75	20	0.0	0					6	3	0
CONOWINGO DAM	79.6	60.8	70.2	-3.5	92	18	51	02+	8	173	1	0	0	0	4.91	0.73	1.14	09	0.0					7	5	2	
CYLBURN	79.9	64.3	72.1	2.0	88	19+	54	01	3	222	0	0	0	0	A 6.22		1.33	19	0.0					6	5	3	
DAMASCUS 3 SSW	79.8	62.0	70.9	0.5	89	17	51	15	2	185	0	0	0	0	3.33	-0.81	0.69	11	0.0	0				8	4	0	
EMMITSBURG 2 SE	80.8	60.3	70.6	0.8	90	19+	52	16+	5	177	2	0	0	0	4.98	1.06	0.91	10	M 0.0	0				9	5	0	
FREDERICK 2 NNE	M	M	M								0	0	0	0	M				0.0								
MILLERS 4 NE	80.7	59.4	70.1	0.7	90	18	48	15+	8	167	1	0	0	0	3.89	0.50	0.93	10	0.0	0				8	3	0	
SMITHSBURG 2NW	M	M	M								0	0	0	0	M				0.0								
--DIVISIONAL DATA----->			71.1	0.4B											4.34	0.29B											

MONTHLY STATION AND DIVISION SUMMARY

STATION	TEMPERATURE (°F)											PRECIPITATION (IN)													
	AVERAGE MAXIMUM	AVERAGE MINIMUM	AVERAGE	DEPARTURE FROM NORMAL	HIGHEST	DATE	LOWEST	DATE	HEATING DEG. DAYS	COOLING DEG. DAYS	NO. OF DAYS				TOTAL	DEPARTURE FROM NORMAL	GREATEST 24 HOURS	DATE	ICE PELLETS, SNOW			NO. OF DAYS			
											MAX		MIN						TOTAL	MAX DEPTH ON GROUND	DATE	.10 OR MORE	.50 OR MORE	1.00 OR MORE	
											>=90	<=32	<=32	<=0											
APPALACHIAN MOUNTAIN 07																									
CUMBERLAND 2	84.2M	60.1M	72.2M	-0.4	94	19	45	06	5E	227E	4	0	0	0	M 5.57	2.29	2.21	13	0.0				7	4	2
FROSTBURG 2	76.6M	56.5M	66.5M	1.4	84	18	45	06	33E	86E	0	0	0	0	4.44	0.44	1.61	09	0.0				7	3	1
SHARPSBURG 5 S	82.2	59.4	70.8	0.6	91	18	49	07+	8	191	2	0	0	0	M				0.0						
WILLIAMSPORT	82.3M	60.4M	71.3M	0.8	93	18	50	17+	0	197E	1	0	0	0	M 5.05	1.27	1.65	12	M 0.0	0			7	4	2
--DIVISIONAL DATA----->																									
ALLEGHENY PLATEAU 08																									
OAKLAND 1 SE	78.1	56.3	67.2	2.8	91	20	43	15+	39	111	2	0	0	0	3.55	-0.87	0.66	05	0.0	0			12	2	0
SAVAGE RIVER DAM	77.6M	57.2M	67.4M	1.2	87	19	47	15+	29E	108E	0	0	0	0	M 4.59	0.69	1.30	09	0.0				10	4	1
SINES DEEP CREEK	M	M	M		84	19	42	06	39E	57E	0	0	0	0	MA 5.98		1.87	09	0.0				12	4	2
--DIVISIONAL DATA----->																									
DELAWARE NORTHERN 01																									
WILMINGTON NEW CASTLE CO AP	82.2	63.3	72.7	0.5	93	18	50	01	2	240	2	0	0	0	5.03	1.15	2.01	10	M 0.0	0			8	4	1
WILMINGTON PORTER RES	83.0M	62.5M	72.8M	1.1	91	18+	51	01	3E	250E	2	0	0	0	3.15	-1.04	0.81	12	0.0	0			7	3	0
--DIVISIONAL DATA----->																									
SOUTHERN 02																									
DOVER	83.0	63.7	73.4	0.1	94	18	48	01	4	260	3	0	0	0	A 3.78	-0.22	0.70	10	0.0	0			6	1	0
--DIVISIONAL DATA----->																									

DAILY PRECIPITATION (INCHES)

STATION	TOTAL	DAY OF MONTH																																		
		01	02	03	04	05	06	07	08	09	10	11	12	13	14	15	16	17	18	19	20	21	22	23	24	25	26	27	28	29	30	31				
MARYLAND																																				
SOUTHERN																																				
EASTERN SHORE 01																																				
ASSATEAGUE	M	-	-	-	-	-	-	-	-	-	-	-	-	-	-	-	-	-	-	-	-	-	-	-	-	-	-	-	-	-	-	-	-	-		
PRINCESS ANNE	M	-	-	-	-	-	-	-	-	-	-	-	-	-	-	-	-	-	-	-	-	-	-	-	-	-	-	-	-	-	-	-	-	-		
SALISBURY 2N	1.07				0.01	0.44	0.01				0.21	0.12	0.16	0.02	0.05																					
SALISBURY FAA AP	0.84			T	0.52	0.26					0.03	0.02	0.01	T						T		T														
SNOW HILL 4 N	1.55				0.01	0.95					0.42	0.02	0.10		0.05							T														
CENTRAL																																				
EASTERN SHORE 02																																				
ROYAL OAK 2 SSW	2.79			0.03		0.10					T	T	0.50	1.09	0.06																					
LOWER SOUTHERN 03																																				
MECHANICSVILLE 5 NE	2.56					0.24						0.65	1.04	0.18	0.16																					
SOLOMONS	MA 3.67	-		0.10		0.93		-	*	0.02 _a		1.30	0.12	0.28	0.80	-																				
UPPER SOUTHERN 04																																				
BALTIMORE WASH INTL AP	3.95			0.19	0.14	0.21			T	0.17	0.36	0.12	0.27	0.03																						
BELTSVILLE	2.86				0.03	0.32				0.42		0.20	0.17	0.03	0.57																					
DALECARLIA RSVR	2.95				0.08	0.38				0.96		0.26	0.76	0.15	0.28																					
LAUREL 3 W	4.45				0.17	0.28			0.05	0.38	0.07	0.14	0.15	0.48																						
MARYLAND SCIENCE CENTER	6.77			0.04	0.07	0.38				0.02	0.94	0.23	0.20	1.89						0.47	2.01															
NATL ARBORETUM DC	4.88				1.23	0.39				0.36		1.27	0.26	0.03	0.20																					
OXON HILL	3.01				0.05	0.56				0.31		0.22	0.20	0.05	0.18																					
UPPER MARLBORO 3 NNW	3.29				0.07	0.32				0.19		1.43	0.12	0.61																						
NORTHERN CENTRAL 06																																				
ABERDEEN PHILLIPS FLD	4.01				0.09	0.74	T			0.01	0.27	0.17	0.40	0.65	0.28																					
BRIGHTON DAM	3.02					0.50				0.07		0.60	0.30	0.35																						
CONOWINGO DAM	4.91				0.50					1.14	0.53	0.39	0.88																							
CYLBURN	A 6.22				0.14	0.56					0.03	1.06	*	1.46 _a	1.07																					
DAMASCUS 3 SSW	3.33			T	0.17	0.19			0.01	0.48	0.54	0.69	0.54	0.51	T																					
EMMITSBURG 2 SE	4.98				0.02	0.90				0.23	0.91	0.41	0.82	0.20	0.63																					
FREDERICK 2 NNE	M	-	-	-	-	-	-	-	-	-	-	-	-	-	-	-	-	-	-	-	-	-	-	-	-	-	-	-	-	-	-	-	-	-	-	
MILLERS 4 NE	3.89				0.18	0.45				0.10	0.93	0.43	0.52	0.06	0.09																					
SMITHSBURG 2NW	M	-	-	-	-	-	-	-	-	-	-	-	-	-	-	-	-	-	-	-	-	-	-	-	-	-	-	-	-	-	-	-	-	-	-	
APPALACHIAN																																				
MOUNTAIN 07																																				
CUMBERLAND 2	M 5.57				0.05	0.90					1.06		0.28	0.10	2.21	0.02																				
FROSTBURG 2	4.44					0.91	0.01				1.61	T	0.20	0.92	0.29	0.07																				
SHARPSBURG 5 S	M					0.59					0.15	0.22	0.29	1.25	1.37	0.07																				
WILLIAMSPORT	M 5.05					0.69	-				0.64		0.12	1.65	0.47	0.05																				
ALLEGHENY PLATEAU 08																																				
OAKLAND 1 SE	3.55				0.17	0.66					0.44		0.10	0.13	0.11	0.30																				
SAVAGE RIVER DAM	M 4.59			0.13	T	0.53					1.30		0.14	0.84	0.92	0.20																				

DAILY PRECIPITATION (INCHES)

STATION	TOTAL	DAY OF MONTH																														
		01	02	03	04	05	06	07	08	09	10	11	12	13	14	15	16	17	18	19	20	21	22	23	24	25	26	27	28	29	30	31
SINES DEEP CREEK	MA 5.98	-		0.15	0.10	0.50		-	-	1.87	0.02	0.10	0.10	1.12	-	0.66		0.10		0.16	0.28	-	*	0.35 _a		-	0.35		-	*	0.12 _a	
DELAWARE																																
NORTHERN 01																																
WILMINGTON NEW CASTLE CO AP	5.03			T	0.07	0.53				0.25	2.01	0.43	0.21	0.54						0.15		0.04				0.79	0.01					
WILMINGTON PORTER RES	3.15			T	T	0.58				0.25	0.64	0.05	0.81	0.35					0.13		T					T	0.34					
SOUTHERN 02																																
DOVER	A 3.78			T		0.47				0.10	0.70	0.19	0.37	*	1.57 _a					T						T	0.38	T				

DAILY TEMPERATURES (°F)

STATION	OB. TIME	MAX/MIN	DAY OF MONTH																															AVERAGE				
			01	02	03	04	05	06	07	08	09	10	11	12	13	14	15	16	17	18	19	20	21	22	23	24	25	26	27	28	29	30	31					
MARYLAND SOUTHERN EASTERN SHORE 01 ASSATEAGUE	VA	MAX MIN																																		M M M		
PRINCESS ANNE	17	MAX MIN																																		M M M		
SALISBURY 2N	17	MAX MIN	74 48	77 46	85 46	88 65	82 66	77 56	82 55	83 58	83 68	87 71	87 67	84 68	84 70	79 52	88 60	93 70	95 74	94 72	84 64	83 62	81 65	83 58	87 60	87 71	87 71	85 66	84 57	85 56	88 63			84.3 62.4				
SALISBURY FAA AP	24	MAX MIN	76 50	80 44	88 56	91 66	79 62	80 59	85 55	85 58	85 69	88 73	83 71	77 71	87 72	80 61	91 56	96 59	98 71	93 76	87 63	81 63	83 63	84 59	89 59	90 73	91 70	84 63	87 59	87 55	90 62			85.9 62.9				
SNOW HILL 4 N	17	MAX MIN	74 41	80 41	89 56	91 63	80 67	82 56	85 52	86 67	86 67	88 72	86 70	76 69	87 71	86 66	88 53	97 57	99 70	98 75	88 68	83 61	83 66	82 57	86 57	89 71	91 73	89 68	85 58	84 52	88 59			86.3 62.5				
CENTRAL EASTERN SHORE 02 ROYAL OAK 2 SSW	17	MAX MIN	75 50	78 53	84 65	87 64	78 64	77 59	81 57	84 60	85 71	86 70	85 70	75 67	85 67	77 65	80 55	89 63	92 71	94 75	85 70	80 66	80 62	81 65	83 61	83 67	89 73	85 71	84 70	85 60	85 61	87 70			83.3 64.7			
LOWER SOUTHERN 03 MECHANICSVILLE 5 NE	07	MAX MIN	75 50	77 49	85 50	86 60	76 64	77 55	80 53	82 53	82 60	85 70	84 66	80 66	81 69	74 62	77 52	87 52	91 60	92 69	87 72	83 66	80 63	77 63	80 60	83 59	85 70	84 66	83 61	82 59	83 61	84 59	84 59			82.1 60.6		
SOLOMONS	08	MAX MIN	76 56	84 64	87 69	85 65	77 63			82 62	83 73	82 67	80 70	80 68	83 70	83 68	86 60	87 74	92 76	94 75	87 71	83 65	80 68	77 72	80 65	83 68	85 72	84 68	83 72	82 72	83 72	84 72			M M			
UPPER SOUTHERN 04 BALTIMORE WASH INTL AP	24	MAX MIN	75 50	80 53	87 62	87 65	79 62	78 57	85 55	83 58	81 67	84 70	82 68	76 68	83 66	75 60	83 51	90 59	94 68	96 73	83 68	83 64	72 66	80 66	82 61	84 65	88 71	87 70	81 66	83 61	83 61	86 69	87 61	83 61	86 69	83.0 63.3		
BELTSVILLE	08	MAX MIN	77 51	75 51	80 62	86 64	86 62	77 56	77 55	83 58	83 66	82 70	86 69	83 68	77 65	83 52	87 60	91 68	93 71	93 81	83 67	83 65	81 60	72 65	63 60	63 70	60 66	59 70	59 66	61 61	59 61	59 61	59 69			82.6 63.5		
DALECARLIA RSVR	08	MAX MIN	77 54	77 54	82 63	87 63	87 62	87 57	87 61	83 61	85 71	85 71	86 71	87 68	86 70	87 65	86 52	86 60	95 68	93 74	93 82	86 71	93 67	93 65	82 65	71 65	82 65	85 66	86 71	91 70	86 69	84 66	86 64	86 70	86 70	84.3 64.7		
LAUREL 3 W	24	MAX MIN	76 54	80 56	85 65	87 67	79 60	78 57	82 60	83 64	83 66	87 71	86 70	76 67	82 67	75 63	82 56	91 62	93 71	94 76	85 70	83 61	74 65	80 65	83 62	86 65	89 71	87 70	84 69	84 63	89 66	87 70	87 66	87 70			83.7 65.0	
MARYLAND SCIENCE CENTER	24	MAX MIN	75 59	82 59	87 68	88 69	80 63	79 63	83 64	84 67	83 69	85 73	81 68	73 68	80 65	83 61	88 67	95 75	95 71	83 72	83 67	74 69	81 68	83 69	85 73	88 82	87 72	82 69	85 72	88 69	87 70	82 73	84 70	86 73			83.3 68.0	
NATL ARBORETUM DC	07	MAX MIN	83 55	78 55	82 64	87 70	87 66	87 64	87 58	83 63	85 69	85 75	86 75	87 73	93 69	87 72	85 56	93 63	93 70	85 77	93 73	83 67	85 68	93 66	93 64	82 65	84 71	87 69	90 74	90 64	86 64	86 71	86 64	87 71	87 64			86.7 67.0
OXON HILL	08	MAX MIN	79 53	78 52	82 54	85 63	88 66	80 60	79 58	84 61	83 63	84 67	87 71	86 68	77 70	84 65	77 54	83 55	91 65	93 69	93 85	83 85	71 85	81 71	84 81	86 86	88 87	87 85	85 85	86 86	87 85	85 86	86 86	86 86			83.9 63.4	
UPPER MARLBORO 3 NNW	08	MAX MIN	78 50	76 51	81 61	87 65	88 65	78 55	78 54	83 58	84 67	83 70	85 69	84 68	76 64	85 52	83 59	89 68	95 71	93 70	85 64	82 66	72 65	81 59	82 62	86 68	89 70	87 66	83 60	84 60	85 67	85 67			83.2 63.1			
NORTHERN CENTRAL 06 ABERDEEN PHILLIPS FLD	07	MAX MIN	76 50	74 51	79 58	85 66	85 62	79 55	77 56	81 58	81 60	83 71	85 71	75 68	73 69	84 64	81 54	88 58	94 63	95 73	80 70	82 64	69 64	80 61	82 65	86 70	88 70	88 70	81 64	83 63	83 65	83 65	83 65			81.6 63.2		

DAILY TEMPERATURES (°F)

STATION	OB. TIME	MAX/MIN	DAY OF MONTH																															AVERAGE
			01	02	03	04	05	06	07	08	09	10	11	12	13	14	15	16	17	18	19	20	21	22	23	24	25	26	27	28	29	30	31	
BRIGHTON DAM	08	MAX	76	75	80	84	84	76	76	81	80	81	85	82	82	81	73	80	88	90	90	82	80	70	80	80	83	86	84	85	81	81		81.2
		MIN	50	50	55	63	61	53	52	55	64	69	67	66	61	60	52	57	66	71	70	61	63	64	61	61	68	68	63	60	60	63		61.1
CONOWINGO DAM	07	MAX	73	72	81	83	76	76	82	78	81	81	71	71	79	72	81	83	89	92	77	79	69	79	82	83	86	84	80	82	82	85		79.6
		MIN	51	51	61	61	58	54	56	54	67	68	64	65	63	53	58	58	68	69	60	60	60	60	62	64	69	66	61	61	61	61		60.8
CYLBURN	08	MAX	74	72	78	84	81	76	72	78	80	80	82	80	78	85	80	84	84	88	88	79	76	67	77	79	81	85	85	82	80	81		79.9
		MIN	54	55	63	65	60	58	55	58	66	70	67	68	70	72	64	62	70	73	68	62	63	62	65	66	66	69	62	64	69		64.3	
DAMASCUS 3 SSW	22	MAX	75	80	81	82	75	74	79	80	79	82	80	73	77	71	79	87	89	88	79	80	67	77	81	83	86	82	80	81	83	84		79.8
		MIN	53	54	61	64	58	54	54	62	66	68	64	66	65	58	51	61	66	70	67	58	64	62	61	64	69	67	64	61	63	66		62.0
EMMITSBURG 2 SE	07	MAX	76	76	80	83	83	78	75	80	83	82	82	82	72	81	72	80	89	90	90	78	79	68	80	81	83	87	84	84	83	84		80.8
		MIN	54	53	54	61	59	56	55	55	56	68	67	66	67	60	52	52	58	68	70	59	58	58	58	59	65	69	64	64	62	62		60.3
FREDERICK 2 NNE	07	MAX																																M
		MIN																																M
MILLERS 4 NE	18	MAX	74	80	82	81	75	73	80	81	81	83	78	69	81	75	78	87	88	90	88	78	78	79	79	82	86	85	83	82	81	84		80.7
		MIN	48	52	61	60	55	53	50	56	64	65	66	63	66	57	48	53	66	70	66	52	58	56	58	61	69	66	64	57	58	65		59.4
SMITHSBURG 2NW	08	MAX																																M
		MIN																																M
APPALACHIAN MOUNTAIN 07																																		
CUMBERLAND 2	18	MAX	82	83	82	88	83	78	83	83	82	81	83	83	82	85	75	84	88	93	94	86	86	68	83	84	90	90	86	89	88		84.2	
		MIN	49	52	56	64	59	45	48	53	58	61	63	65	64	58	50	54	57	68	74	64	65	63	61	62	65	70	63	65	67		60.1	
FROSTBURG 2	07	MAX	73	77	71	79	79	68	72	77	75	71	78	77	78	77		81	81	84	83	75	78	61	76	76	80	82	76	81	79	76		76.6
		MIN	47	47	54	59	54	45	48	50	56	57	59	61	60	52		48	62	65	65	57	58	55	56	57	62	63	58	60	61	62		56.5
SHARPSBURG 5 S	07	MAX	77	77	83	84	83	77	78	82	82	82	85	85	76	84	73	82	89	91	90	80	81	68	81	82	86	89	85	87	84	84		82.2
		MIN	50	53	54	61	59	49	49	52	57	65	65	66	67	55	50	50	59	66	67	62	62	60	59	62	67	67	61	62	63	64		59.4
WILLIAMSPORT	06	MAX	78	79	83	84	84		79	83	83	81	85	82	77	83	75	82	82	93		81	82	70	81	84	87	87	86	86	80	86		82.3
		MIN	54	54	54	61	65		53	52	52	65	67	67	67	65	58	50	50	66		62	59	62	59	60	64	68	68	62	64	64		60.4
ALLEGHENY PLATEAU 08																																		
OAKLAND 1 SE	07	MAX	74	74	76	77	76	69	73	76	77	68	80	78	76	77	68	81	82	84	86	91	90	81	74	76	83	80	78	82	78	77		78.1
		MIN	47	48	55	57	56	43	43	48	59	56	58	64	61	53	43	51	55	65	65	63	63	57	55	58	63	63	56	57	63	64		56.3
SAVAGE RIVER DAM	08	MAX	76	75	77	78	77	72	75	76	73	72	80	77	77	78	69	78	83	84	87	77	80		74	76	81	83	80	80	79	76		77.6
		MIN	47	47	55	59	58	47	48	48	55	60	60	62	62	54	47	48	56	64	65	64	63		57	58	62	65	58	59	65	65		57.2
SINES DEEP CREEK	07	MAX		76	76	76	74	69		78	66	77	80	76			80	80	83	84	73			79	78		78	76			80		M	
		MIN		45	50	55	56	42		44	56	56	60	60			44	50	58	61	60			53	53		61	55			55		M	
DELAWARE NORTHERN 01																																		
WILMINGTON NEW CASTLE CO AP	24	MAX	76	80	88	86	79	78	84	83	81	84	73	74	83	75	81	85	92	93	80	81	76	81	81	83	86	87	82	86	83	84		82.2
		MIN	50	54	62	64	62	57	55	60	67	69	64	64	69	58	55	60	70	77	68	59	65	61	61	65	71	69	68	61	66	67		63.3
WILMINGTON PORTER RES	24	MAX	75	79	88	84	76	76	80	83	83	83					86	91	91		80	77	81	82	85	89	84	82	85	86	86		83.0	
		MIN	51	54	61	66	54	54	55	56					56	56	69	70	75	67	62	63	63	62	64	70	69	69	64	65	67		62.5	
SOUTHERN 02																																		
DOVER	16	MAX	74	80	88	87	84	77	82	84	83	85	81	71	82	76	80	85	93	94	90	82	82	79	81	85	87	86	84	80	84	85		83.0

MARYLAND AND DELAWARE
201406

DAILY TEMPERATURES (°F)

STATION	OB. TIME	MAX/MIN	DAY OF MONTH																															AVERAGE
			01	02	03	04	05	06	07	08	09	10	11	12	13	14	15	16	17	18	19	20	21	22	23	24	25	26	27	28	29	30	31	
		MIN	48	51	62	66	62	57	56	58	67	70	69	65	66	61	58	62	71	76	71	64	64	67	61	62	70	69	70	62	60	66		63.7

SNOWFALL AND SNOW ON GROUND (INCHES)

STATION		DAY OF MONTH																														
		01	02	03	04	05	06	07	08	09	10	11	12	13	14	15	16	17	18	19	20	21	22	23	24	25	26	27	28	29	30	31
MARYLAND SOUTHERN EASTERN SHORE 01 ASSATEAGUE PRINCESS ANNE SALISBURY 2N SALISBURY FAA AP SNOW HILL 4 N	SNOWFALL																															
	SNOWFALL																															
	SNOWFALL																															
	SN ON GND																															
	SNOWFALL																															
DELAWARE NORTHERN 01 WILMINGTON NEW CASTLE CO AP WILMINGTON PORTER RES	SNOWFALL																															
	SN ON GND																															
	SNOWFALL																															
	SN ON GND																															

Snowfall: Includes snow and ice. Values for NWS stations (J index note) are Mid-Mid (LST).

Snow on ground: Includes snow, sleet, ice, and hail. Values for NWS stations (J index note) are observed at 12 UTC (GMT).

Water Equivalent: Given for NWS stations (J index note) only, when snow depth is 2 inches or more, and is measured at 18 UTC (GMT)

PAN EVAPORATION AND WIND

STATION		DAY OF MONTH																															TOTAL OR AVERAGE
		01	02	03	04	05	06	07	08	09	10	11	12	13	14	15	16	17	18	19	20	21	22	23	24	25	26	27	28	29	30	31	
MARYLAND UPPER SOUTHERN 04 BELTSVILLE	WIND	49	29	43	27	46	58	41	19	47	26	21	52	37	47	65	26	22	47	48	40	-	58	25	53	62	-	50	41	46	32	1240E	
	EVAP	0.27	0.23	0.20	0.12	0.26	0.22	0.25	0.23	0.13	0.14	0.13	0.16	0.03	0.23	0.28	0.20	0.23	0.29	0.27	0.23	-	0.26	0.17	0.25	0.24	-	0.24	0.24	0.26	0.27	6.46E	
	MAX	82	82	82	85	90	80	84	88	84	86	88	87	76	85	76	84	82	94	92	84	-	76	84	84	88	-	88	90	80	88	84.5	
	MIN	56	54	55	64	64	55	56	59	61	65	68	66	66	62	54	55	63	70	70	63	-	54	61	70	72	-	65	61	60	61	61.8	
UPPER MARLBORO 3 NNW	WIND	-	-	-	-	-	-	-	-	-	-	-	-	-	-	-	-	-	-	-	-	-	-	-	-	-	-	-	-	-	-	M	
	EVAP	-	-	-	-	-	-	-	-	-	-	-	-	-	-	-	-	-	-	-	-	-	-	-	-	-	-	-	-	-	-	M	
	MAX	-	-	-	-	-	-	-	-	-	-	-	-	-	-	-	-	-	-	-	-	-	-	-	-	-	-	-	-	-	-	M	
	MIN	-	-	-	-	-	-	-	-	-	-	-	-	-	-	-	-	-	-	-	-	-	-	-	-	-	-	-	-	-	-	M	
ALLEGHENY PLATEAU 08 SAVAGE RIVER DAM	WIND	-	-	-	-	-	-	-	-	-	-	-	-	-	-	-	-	-	-	-	-	-	-	-	-	-	-	-	-	-	-	M	
	EVAP	-	-	-	-	-	-	-	-	-	-	-	-	-	-	-	-	-	-	-	-	-	-	-	-	-	-	-	-	-	-	M	
	MAX	-	-	-	-	-	-	-	-	-	-	-	-	-	-	-	-	-	-	-	-	-	-	-	-	-	-	-	-	-	-	-	
	MIN	-	-	-	-	-	-	-	-	-	-	-	-	-	-	-	-	-	-	-	-	-	-	-	-	-	-	-	-	-	-	M	

Evaporation: Is measured in hundreths of inches.

Wind: Is measured in miles.

Max and Min: The maximum and minimum temperatures (Fahrenheit) of the water in the evaporation pan.

STATION INDEX

STATION	INDEX NO.	DIVISION	COUNTY	LATITUDE	LONGITUDE	ELEVATION (IN FEET)	OBSERVATION TIME AND TABLES			
							LOCAL STD TIME			
							TEMP	PRECIP	EVAP	SPECIAL SEE (NOTES)
MARYLAND										
ABERDEEN PHILLIPS FLD	0015	06	HARFORD	39 28	76 10W	57	07	07		CH
ASSATEAGUE	0335	01	WORCESTER	38 4	75 13W	10	VAR	VAR		H
BALTIMORE WASH INTL AP R	0465	04	ANNE ARUNDEL	39 10	76 41W	156	24	24		HJ
BELTSVILLE	0700	04	PRINCE GEORGE'S	39 2	76 56W	145	08	08	08	CH
BRIGHTON DAM	1125	06	MONTGOMERY	39 11	77 0W	330	08	08		H
CONOWINGO DAM	2060	06	HARFORD	39 39	76 11W	40	07	07		H
CUMBERLAND 2	2282	07	ALLEGANY	39 39	78 45W	730	18	18		H
CYLBURN	2308	06	BALTIMORE	39 21	76 39W	235	08	08		H
DALECARLIA RSVR	2325	04	DISTRICT OF COLUMBIA	38 56	77 7W	150	08	08		H
DAMASCUS 3 SSW	2336	06	MONTGOMERY	39 16	77 14W	700	22	22		H
EMMITSBURG 2 SE	2906	06	FREDERICK	39 41	77 17W	403	07	07		H
FREDERICK 2 NNE	3353	06	FREDERICK	39 26	77 24W	280	07	07		H
FROSTBURG 2	3415	07	ALLEGANY	39 40	78 56W	2170	07	07		H
LAUREL 3 W	5111	04	PRINCE GEORGE'S	39 5	76 54W	400	24	24		H
MARYLAND SCIENCE CENTER R	5718	04	BALTIMORE (CITY)	39 17	76 37W	20	24	24		H
MECHANICSVILLE 5 NE	5865	03	ST. MARY'S	38 28	76 42W	100	07	07		H
MILLERS 4 NE	5934	06	CARROLL	39 43	76 48W	860	18	18		CH
NATL ARBORETUM DC	6350	04	DISTRICT OF COLUMBIA	38 55	76 58W	50	07	07		H
OAKLAND 1 SE	6620	08	GARRETT	39 25	79 24W	2420	07	07		H
OXON HILL	6800	04	PRINCE GEORGE'S	38 47	76 60W	120	08	08		H
PRINCESS ANNE	7330	01	SOMERSET	38 13	75 41W	20	17	17		H
ROYAL OAK 2 SSW	7806	02	TALBOT	38 43	76 11W	10	17	17		H
SALISBURY 2N	8004	01	WICOMICO	38 24	75 36W	20	17	17		H
SALISBURY FAA AP	8005	01	WICOMICO	38 20	75 31W	48	24	24		H
SAVAGE RIVER DAM	8065	08	GARRETT	39 31	79 8W	1495	08	08	08	CH
SHARPSBURG 5 S	8207	07	WASHINGTON	39 24	77 43W	500	07	07		H
SINES DEEP CREEK	8315	08	GARRETT	39 31	79 25W	2040	07	07		H
SMITHSBURG 2NW	8371	06	WASHINGTON	39 40	77 35W	670	08	08		H
SNOW HILL 4 N	8380	01	WORCESTER	38 14	75 23W	30	17	17		H
SOLOMONS	8405	03	CALVERT	38 19	76 27W	12	08	08		H
UPPER MARLBORO 3 NNW	9070	04	PRINCE GEORGE'S	38 51	76 46W	130	08	08	08	H
WILLIAMSPORT	9570	07	WASHINGTON	39 37	77 51W	360	06	06		H
DELAWARE										
DOVER	2730	02	KENT	39 15	75 31W	30	16	16		H
MILTON #	6102	02	SUSSEX	38 49	75 12W	4		08		H
WILMINGTON NEW CASTLE CO AP R	9595	01	NEW CASTLE	39 40	75 36W	79	24	24		HJ
WILMINGTON PORTER RES	9605	01	NEW CASTLE	39 46	75 32W	270	24	24		H

REFERENCE NOTES

STATION NAMES: Name of the city, town or locality. Figures and letters following the station names indicate the distance in miles and direction from the post office or town community center.

DIVISIONS: Areas within a state of similar climatological characteristics. Division averages are calculated using data from stations that record temperature and/or precipitation. Station Precipitation totals flagged with an 'F' or 'M' are excluded from the Divisional Average calculations of precipitation. Stations with monthly Temperature averages flagged with an 'F' or 'M' are included in the Divisional Average if there are no more than 9 flagged or missing daily values in the month, else they are excluded from the divisional average for temperature.

NORMALS: The average value of the meteorological element over a time period. Effective 1 January 2012, the averaging period is 1981 to 2010. The normals for National Weather Service localities have been adjusted so as to be representative for the current observation site.

MONTHLY DEGREE DAY TOTALS: One heating (cooling) degree day is accumulated for each whole degree that the daily mean temperature is below (above) 65 degrees Fahrenheit.

PRECIPITATION: Values shown in hundredths of inches are water equivalent totals, i.e., total of liquid and melted frozen precipitation. In the "Monthly Summarized Data" table the total snow and sleet values shown in tenths of inches are unmelted amounts. The max depth on ground values of snow and sleet shown in whole inches are cumulative unmelted amounts. The number of days with .10, .50, 1.00 or more refers to water equivalents.

PRECIPITATION QUALITY CONTROL: The NCDC quality control process may flag precipitation data that are spatially inconsistent, exceed climatological limits, or are inconsistent with prevailing weather patterns.

TEMPERATURE: Original temperature values are given in the "Daily Temperature" table. Summary temperature information (averages, departures, extremes, monthly degree day totals) is based on the values labeled MAX/MIN.

WIND: (As shown in the "Evaporation and Wind" table) the total wind movement in miles over the evaporation pan as determined by an anemometer recorder located 6-8 inches above the pan.

SYMBOLS AND LETTERS USED IN THE STATION INDEX TABLE

- C Station is equipped with recording rain gage (R) but values in this bulletin are from a non-recording rain gage unless indicated by an R.
- G Observations appear in the "Soil Temperatures" table.
- H Observations appear in the "Snowfall and Snow on the Ground" table.
- J Station also published as a Local Climatological Data publication.
- VAR Observation time varies.
- SR Observation time near sunrise.
- SS Observation time near sunset.

SYMBOLS AND LETTERS USED IN THE DATA TABLES

(DAILY DATA ARE FOR THE 24 HOURS IMMEDIATELY PRECEDING OBSERVATION TIME.)
BLANK Entries in the "Monthly Summarized Data" table indicate no record.
BLANK Entries in the "Daily Precipitation" and "Snowfall and Snow on the Ground" tables indicate zero.
BLANK Entries in the "Daily Temperature" table indicate a missing record

- No record. Data not recorded or not received in time for publication.
- + Precipitation or temperature extremes occurred on one or more previous dates during the month.
- * Rain gage not read. Precipitation is included in the amount following the asterisks.
 Time distribution may not be known. A * preceding the monthly total indicates precipitation amount is being carried forward to next month's total, and may include amounts from the previous month(s).
- a As a subscript, indicates accumulated total.

AMOUNTS: Climate Division totals are published in the report. If the amount is not published, please contact the National Climatic Data Center for more information. For stations that determine date of last reading. (Hawaii stations)

- B Divisional Departure from normals are computed using 1981-2010 normals.
- E Normalized HDD/CDD Calculation. E is appended to the HDD/CDD Calculation when 1-9 individual daily TMAX and/or TMIN values are missing and a Normalized HDD/CDD Calculation is provided. M appears alone if 10 or more daily values are missing.
- F Monthly calculation flagged value. F is appended to average and/or total values computed which exclude one or more daily data values that have been flagged by the GHCN-Daily Dataset
- M Insufficient or partial data. M is appended to average and/or total values computed with 1-9 daily values missing. M appears alone if 10 or more daily values are missing, (8 or more for wind and evaporation).
- N Indicates snow fall or Snowdepth totals are computed with one or more missing days.
- R Amounts from recording rain gage.
- T Trace. An amount too small to measure.

SEASONAL TABLES: Monthly and seasonal snowfall and heating degree days for the 12 months ending with the June data are published in the July issue of this bulletin. Cooling degree days for the calendar year are published in the "Climatological Data Annual Summary."

Information concerning the history of changes in locations, exposure, etc. of substations is kept on file at the National Climatic Data Center. Historical information of regular National Weather Service Offices may be obtained from the "Local Climatological Data" annual publication. The contents of this publication may be reprinted or otherwise used freely, with proper credit to the National Climatic Data Center. The data are also available digitally.

Effective with the January 2011 Data-Month, COOP Observer Names are no longer included in the Monthly and Annual Climatological Data Publications. This information is not published to ensure the privacy of personal information pursuant to Section 208 of the E-Government Act of 2002 (44 USC 3601).

As of the 2011 Data-Year, Station and Climate Division Maps are no longer being included in the CD Publications. NCDC's Product Development Branch provides updated Station Maps for various data networks via the Historical Observing Metadata Repository: <http://www.ncdc.noaa.gov/homr>.

The GHCN-Daily Quality Control Flags shown below are displayed as superscripts with the data. For more Information on Global Historical Climatology Network - Daily and flags, see: <http://www.ncdc.noaa.gov/oa/climate/ghcn-daily/> and Comprehensive Automated Quality Assurance of Daily Surface Observations. Durre, Imke, Matthew J. Menne, Byron E. Gleason, Tamara G. Houston, Russell S. Vose, 2010: J. Appl. Meteor. Climatol., 49, 16151633. doi: 10.1175/2010JAMC2375.1

- | | |
|---|---|
| Blank = Passed All checks | N = failed naught check |
| D = failed duplicate check | O = failed climatological outlier check |
| G = failed gap check | R = failed lagged range check |
| I = failed internal consistency check | S = failed spatial consistency check |
| K = failed streak/frequent-value check | T = failed temporal consistency check |
| L = failed check on length of multiday period | W = temperature too warm for snow |
| M = failed megaconsistency check | X = failed bounds check |
| | Z = flagged as a result of an official Datzilla investigation |

Beginning with the January 2013 CD Publication, monthly mean temperature calculations have changed to the National Data Stewardship Team standard. Monthly maximum and minimum temperatures are not rounded until after the monthly mean temperature is calculated. This is the most accurate outcome, but may be slightly different from the mean derived from rounded monthly maximum and minimum.

Processing Updates and Errata: The CD Publications are periodically reproduced to include the addition of late reports and reported corrections. The GHCND data version noted on the cover of the publication provides the generation date.

The climate division temperature and precipitation values in this publication are based on simple averages from the current set of NWS-Designated Open and Published COOP and First Order Sites within each division. These values differ from those found in NCDC's nClimDiv product. Beginning in February 2014, the nClimDiv product is used

These and other publications are available from the National Climatic Data Center

Hourly Precipitation Data

This publication contains hourly precipitation amounts obtained from recording rain gages located at National Weather Service, Federal Aviation Administration, and cooperative observer stations. Published data are displayed in inches and tenths or inches and hundredths at local standard time. HPD includes maximum precipitation for nine (9) time periods from 15 minutes to 24 hours, for selected stations.

Climatological Data

Monthly editions contain station daily maximum and minimum temperatures and precipitation. Some Stations provide daily snowfall, snow depth, evaporation, and soil temperature data. Each edition also contains monthly summaries for heating and cooling degree days (65 degree F base). The July issue contains a recap of monthly heating degree days and snow data for the preceding July through June.

The Annual issue contains monthly and annual averages of temperature, precipitation, temperature extremes, freeze data, soil temperatures, evaporation, and a recap of monthly cooling degree days.

Storm Data

Monthly issues contain a chronological listing, by states, of occurrences of storms and unusual weather phenomena. Reports contain information on storm paths, deaths, injuries, and property damage. An "Outstanding storms of the month" section highlights severe weather events with photographs, illustrations, and narratives. The December issue includes annual tornado, lightning, flash flood, and tropical cyclone summaries.

Monthly Climatic Data for the World

This publication contains monthly means for temperature, pressure, precipitation, vapor pressure, and sunshine for approximately 2,000 surface data collection stations worldwide and monthly mean upper air temperatures, dew point depressions, and wind velocities for approximately 500 observing sites.

Local Climatological Data

LCD publications summarize temperature, relative humidity, precipitation, cloudiness, wind speed and direction observations for several hundred cities in the U.S. and its territories. Each monthly publication also contains 3 hourly weather observations for that month and a hourly summary of precipitation. Annual LCD publications contain a summary of the past calendar year as well as historical averages and extremes.

For Information Call:

(828) 271-4800 Option 2

(828) 271-4010 (TDD)

(828) 271-4876 (Fax)

NOAA\National Climatic Data Center
Attn: User Engagement & Services Branch
151 Patton Avenue
Asheville, NC 28801-5001

Customer Services Number: (828) 271-4800, option 2
TDD : (828) 271-4010
Fax number: (828) 271-4876

NCDC now offers free online access to the *Climatological Data* publication.
Go to : www.ncdc.noaa.gov and choose Most Popular.