



CLIMATOLOGICAL DATA

MARYLAND AND DELAWARE

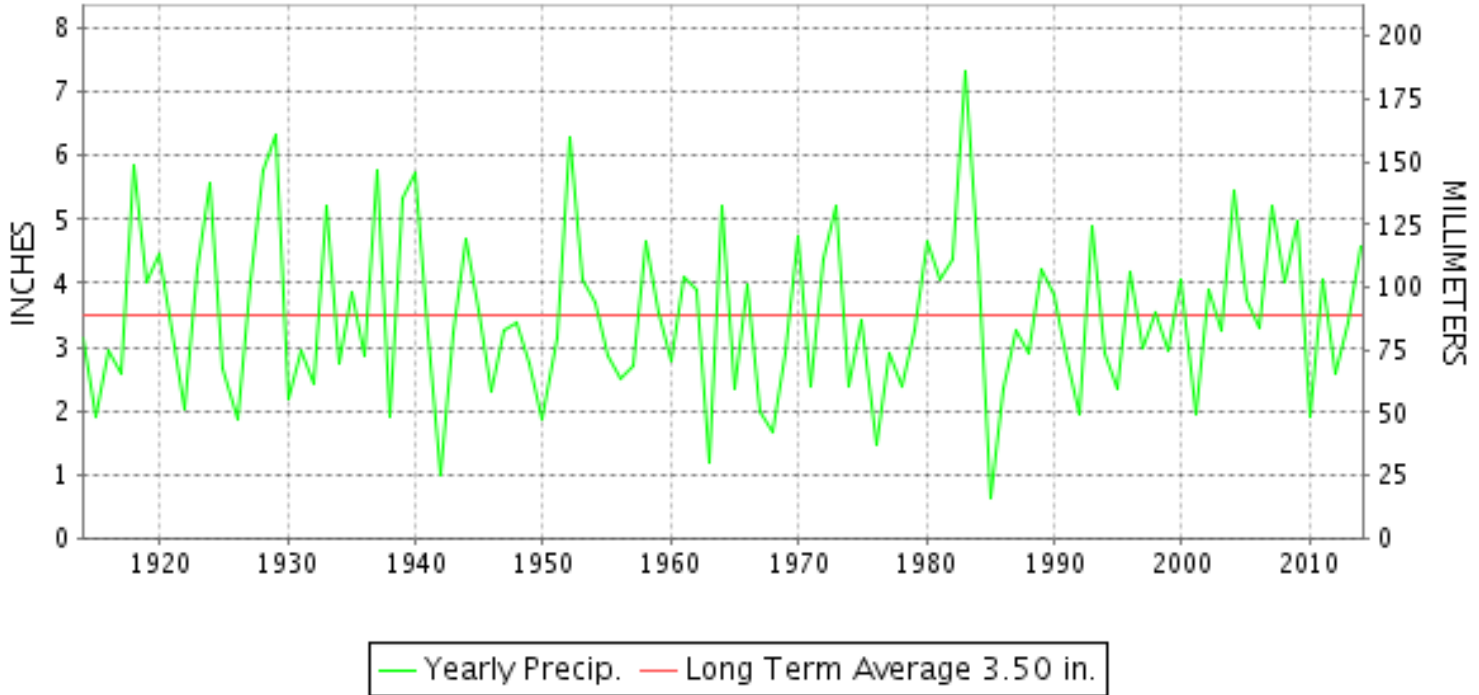
APRIL 2014

VOLUME 118 NUMBER 04

ISSN 0145-0549

GHCND Ver: 3.12-upd-2014072905

APRIL PRECIPITATION BY YEAR



TEMPERATURE AND PRECIPITATION EXTREMES

MARYLAND

HIGHEST TEMPERATURE	88	APRIL 14	CUMBERLAND 2
LOWEST TEMPERATURE	20	APRIL 17++	2 STATIONS
GREATEST TOTAL PRECIPITATION	9.30		MARYLAND SCIENCE CENTER
LEAST TOTAL PRECIPITATION	2.97		CUMBERLAND 2
GREATEST 1 DAY PRECIPITATION	5.70	APRIL 30	CONOWINGO DAM
GREATEST TOTAL SNOWFALL	0.6		SINES DEEP CREEK
GREATEST DEPTH OF SNOW OR ICE	1		SINES DEEP CREEK

"I certify that this is an official publication of the National Oceanic and Atmospheric Administration (NOAA) It is compiled using information from weather observing sites supervised by NOAA/National Weather Service and received at the National Climatic Data Center(NCDC), Asheville, North Carolina 28801."

Director
National Climatic Data Center

noaa

National
Oceanic and
Atmospheric Administration

National
Environmental Satellite, Data
and Information Service

National
Climatic Data Center
Asheville, North Carolina

DELAWARE

HIGHEST TEMPERATURE	83	APRIL 13	WILMINGTON NEW CASTLE CO AP
LOWEST TEMPERATURE	29	APRIL 16	WILMINGTON PORTER RES
GREATEST TOTAL PRECIPITATION	8.10		WILMINGTON PORTER RES
LEAST TOTAL PRECIPITATION	4.07		DOVER
GREATEST 1 DAY PRECIPITATION	4.92	APRIL 30	WILMINGTON PORTER RES

MARYLAND AND DELAWARE
201404

MONTHLY STATION AND DIVISION SUMMARY

STATION	TEMPERATURE (°F)														PRECIPITATION (IN)															
	AVERAGE MAXIMUM	AVERAGE MINIMUM	AVERAGE	DEPARTURE FROM NORMAL	HIGHEST	DATE	LOWEST	DATE	HEATING DEG. DAYS	COOLING DEG. DAYS	NO. OF DAYS				TOTAL	DEPARTURE FROM NORMAL	GREATEST 24 HOURS	DATE	ICE PELLETS, SNOW			NO. OF DAYS								
											MAX		MIN						TOTAL	MAX DEPTH ON GROUND	DATE	.10 OR MORE	.50 OR MORE	1.00 OR MORE						
											>=90	<=32	<=32	<=0																
MARYLAND SOUTHERN EASTERN SHORE 01																														
ASSATEAGUE	M	M	M								0	0	0	0	M					0.0										
PRINCESS ANNE	M	M	M		80	11	35	01	245E	15E	0	0	0	0	M				0.0											
SALISBURY 2N	66.3MF	44.2M	55.2MF		80	13	31	06	301E	11E	0	0	1	0	4.38		1.68	16	0.0				8	3	1					
SALISBURY FAA AP	67.1	43.8	55.5	1.5	83	13	32	06	292	14	0	0	1	0	3.06	-0.49	1.70	15	0.0	0		5	2	1						
SNOW HILL 4 N	66.6	41.7	54.1	-1.7	79	13+	29	17+	325	6	0	0	5	0	4.32	0.84	1.47	16	0.0			9	2	1						
--DIVISIONAL DATA----->			54.9	0.8B											3.92	0.66B														
CENTRAL EASTERN SHORE 02																														
ROYAL OAK 2 SSW	65.7	44.6	55.2	-1.1	78	13+	30	17+	294	7	0	0	2	0	4.69	0.83	1.61	30	0.0	0		8	4	1						
--DIVISIONAL DATA----->			55.2	0.7B											4.69	1.30B														
LOWER SOUTHERN 03																														
MECHANICSVILLE 5 NE	65.6	40.1	52.8	-1.8	85	15	28	17	366	11	0	0	5	0	4.29	0.79	2.26	30	M 0.0			5	3	1						
SOLOMONS	66.3M	46.7M	56.5M	0.1	86	12	32	16	260E	14E	0	0	1	0	MA 3.26		1.64	30	0.0			5	2	1						
--DIVISIONAL DATA----->			54.7	0.5B											4.29	1.09B														
UPPER SOUTHERN 04																														
BALTIMORE WASH INTL AP	64.1	41.9	53.0	-0.7	83	13	30	17	360	7	0	0	2	0	8.60	5.41	3.06	30	T	0		8	4	3						
BELTSVILLE	64.2	42.5	53.3	-0.4	82	14	29	06	352	10	0	0	3	0	5.20	1.85	2.35	16	T	0		5	3	2						
DALECARLIA RSVR	66.0	42.9	54.5	-1.7	84	14	31	16+	321	11	0	0	3	0	3.23	-0.43	1.64	30	0.0	0		5	2	1						
LAUREL 3 W	64.6	43.2	53.9	-1.2	83	13	29	16	338	11	0	0	2	0	8.88	5.07	4.13	30	0.0			7	4	2						
MARYLAND SCIENCE CENTER	64.5	47.0	55.7	-0.9	84	13	33	16	285	14	0	0	0	0	9.30	6.08	3.99	30	0.0			7	4	3						
NATL ARBORETUM DC	68.6M	44.2M	56.4M	0.0	86	14	32	06	263E	14E	0	0	1	0	M 4.55	1.04	1.71	30	M 0.0			6	2	2						
OXON HILL	66.2	44.2	55.2	-1.3	85	14	32	17+	300	14	0	0	2	0	A 4.17	0.77	1.56	30	MT	0		3	2	2						
UPPER MARLBORO 3 NNW	65.3	41.5	53.4	-0.9	84	14	29	17+	353	12	0	0	3	0	4.63	1.08	2.00	30	0.0			5	2	2						
--DIVISIONAL DATA----->			54.4	0.3B											6.29	2.95B														
NORTHERN CENTRAL 06																														
ABERDEEN PHILLIPS FLD	63.2	40.9	52.1	-2.0	79	14+	31	16	386	6	0	0	2	0	3.85	0.18	1.39	30	0.0	0		5	3	2						
BRIGHTON DAM	63.3M	39.2M	51.3M		82	14	28	17+	411E	5E	0	0	9	0	4.87		1.75	30	0.0	0		7	3	1						
CONOWINGO DAM	61.2	38.3	49.7	-3.8	76	15	31	17	455	3	0	0	2	0	9.26	5.33	5.70	30	0.0			3	3	3						
CYLBURN	63.2M	41.9	52.5M	-0.8	82	14	29	16	377E	10E	0	0	2	0	A 6.13		2.64	16	0.0			5	3	2						
DAMASCUS 3 SSW	62.1	41.7	51.9	-1.2	82	13	27	16	396	8	0	0	4	0	6.59	2.96	3.19	30	T	0		7	4	1						
EMMITSBURG 2 SE	63.6	38.9	51.3	0.2	83	14	29	17+	412	8	0	0	8	0	4.54	0.63	1.80	30	0.0	0		6	4	1						
FREDERICK 2 NNE	M	M	M								0	0	0	0	M				0.0											
MILLERS 4 NE	62.5	39.6	51.1	-0.6	80	13	26	16	412	3	0	0	6	0	6.13	2.42	2.69	30	0.3	0		7	3	2						
SMITHSBURG 2NW	M	M	M								0	0	0	0	M				0.0											
--DIVISIONAL DATA----->			51.4	-0.9B											5.91	2.38B														

MONTHLY STATION AND DIVISION SUMMARY

STATION	TEMPERATURE (°F)											PRECIPITATION (IN)												
	AVERAGE MAXIMUM	AVERAGE MINIMUM	AVERAGE	DEPARTURE FROM NORMAL	HIGHEST	DATE	LOWEST	DATE	HEATING DEG. DAYS	COOLING DEG. DAYS	NO. OF DAYS				TOTAL	DEPARTURE FROM NORMAL	GREATEST 24 HOURS	DATE	ICE PELLETS, SNOW			NO. OF DAYS		
											MAX		MIN						TOTAL	MAX DEPTH ON GROUND	DATE	.10 OR MORE	.50 OR MORE	1.00 OR MORE
											>=90	<=32	<=32	<=0										
APPALACHIAN MOUNTAIN 07																								
CUMBERLAND 2	66.3	39.7	53.0	-1.5	88	14	28	17+	365	9	0	0	5	0	2.97	-0.33	1.11	30	0.0			7	1	1
FROSTBURG 2	60.2	34.8	47.5	0.0	83	14	20	17+	521	4	0	0	10	0	3.26	-0.61	1.18	30	M 0.2	M T	16	8	1	1
SHARPSBURG 5 S	64.2	36.2	50.2	-1.1	84	14	26	07+	444	8	0	0	12	0	M 3.76	0.14	1.25	30	0.0			8	2	1
WILLIAMSPORT	64.6M	41.3M	52.9M	0.8	84	14	28	18	360E	9E	0	0	2	0	M 3.29	0.09	0.92	30	M 0.0	0		8	2	0
--DIVISIONAL DATA----->																								
ALLEGHENY PLATEAU 08																								
OAKLAND 1 SE	61.0	33.0	47.0	0.4	81	15+	20	17+	536	0	0	0	13	0	3.24	-0.63	0.49	30	0.1	0		11	0	0
SAVAGE RIVER DAM	60.8M	35.9M	48.3M	-0.4	83	14	25	17	496E	0	0	0	11	0	M 2.34	-0.99	0.75	30	0.0			9	1	0
SINES DEEP CREEK	59.9M	32.2M	46.1M		82	14	22	17+	561E	0	0	0	15	0	M 2.90	0.49	0.49	30	M 0.6	1	16	10	0	0
--DIVISIONAL DATA----->																								
DELAWARE NORTHERN 01																								
WILMINGTON NEW CASTLE CO AP	63.6	41.5	52.6	-0.7	83	13	31	16	374	7	0	0	2	0	6.84	3.34	3.89	30	0.0	0		6	4	1
WILMINGTON PORTER RES	62.5	41.7	52.1	-0.6	80	13	29	16	381	4	0	0	1	0	8.10	3.89	4.92	30	0.0	0		7	3	2
--DIVISIONAL DATA----->																								
SOUTHERN 02																								
DOVER	64.6	43.3	54.0	-1.0	81	13	33	16	334	10	0	0	0	0	4.07	0.19	2.04	30	0.0	0		6	2	1
--DIVISIONAL DATA----->																								

DAILY PRECIPITATION (INCHES)

STATION	TOTAL	DAY OF MONTH																																
		01	02	03	04	05	06	07	08	09	10	11	12	13	14	15	16	17	18	19	20	21	22	23	24	25	26	27	28	29	30	31		
MARYLAND																																		
SOUTHERN																																		
EASTERN SHORE 01																																		
ASSATEAGUE	M	-	-	-	-	-	-	-	-	-	-	-	-	-	-	-	-	-	-	-	-	-	-	-	-	-	-	-	-	-	-	-	-	
PRINCESS ANNE	M																																	
SALISBURY 2N	4.38					0.04		0.46	0.20							0.33	1.68		0.01					T			0.77	0.10		0.29	0.50			
SALISBURY FAA AP	3.06			T	0.01	T		0.17	0.04							1.70	0.01						T	T		0.54	0.17	T	0.07	T	0.35			
SNOW HILL 4 N	4.32					0.23		0.34	0.43							0.24	1.47									0.71	0.24		0.20	0.46				
CENTRAL																																		
EASTERN SHORE 02																																		
ROYAL OAK 2 SSW	4.69			T	0.02			0.28	0.10							0.46	0.65						T			0.10	0.50	0.06	0.03	0.88	1.61			
LOWER SOUTHERN 03																																		
MECHANICSVILLE 5 NE	4.29			0.01	T			T	0.41							T	0.87							0.01		0.54	0.06		0.13	2.26				
SOLOMONS	MA 3.26		0.02	0.01	0.02	*	*	0.14 _a	-							0.10	0.74	-	-	-	-			0.12		0.44	0.03		-	1.64				
UPPER SOUTHERN 04																																		
BALTIMORE WASH INTL AP	8.60		T	0.03	0.12			0.45	0.07	T		T			T	2.42								0.26		0.63	T		0.32	1.24	3.06			
BELTSVILLE	5.20					0.01		0.01	0.60				0.05			0.08	2.35							0.03		0.39			0.18	1.50				
DALECARLIA RSVR	3.23					0.02		0.01	0.58				0.06			0.15								0.02		0.46			0.29	1.64				
LAUREL 3 W	8.88				0.18			0.60	0.02			0.02				2.45										0.43			0.27	0.73	4.13			
MARYLAND SCIENCE CENTER	9.30			0.06				0.38	0.03			0.01				2.32								0.05		0.63			0.28	1.40	3.99			
NATL ARBORETUM DC	M 4.55			T	0.01			T	0.48							0.11	1.59				T	-		0.04		0.39	0.01		0.21	1.71				
OXON HILL	A 4.17			0.01		0.02			0.41				T			0.03	1.53				*	*	*	*	*	*	*	*	*	*	0.61 _a	1.56		
UPPER MARLBORO 3 NNW	4.63				T	0.02			0.42	T						0.01	1.48							0.02		0.41			0.27	2.00				
NORTHERN CENTRAL 06																																		
ABERDEEN PHILLIPS FLD	3.85			T	0.07	0.02			0.59				0.01			0.02	1.17							0.01		0.36			0.21	1.39				
BRIGHTON DAM	4.87			0.05				0.06	0.47				0.05			0.74	0.85							0.30		0.30			0.30	1.75				
CONOWINGO DAM	9.26																2.36												1.20	5.70				
CYLBURN	A 6.13			0.03	0.08	0.02		*	0.42 _a				0.02			0.04	2.64							0.20		0.57			0.44	1.67				
DAMASCUS 3 SSW	6.59		T	0.04	T			0.49	0.02 _a			0.01				0.83	T							0.57		0.34			0.23	0.87	3.19			
EMMITSBURG 2 SE	4.54			0.01	0.02	0.01			0.52				0.04			0.32	0.84							0.08		0.54			0.36	1.80				
FREDERICK 2 NNE	M	-	-	-	-	-	-	-	-	-	-	-	-	-	-	-	-	-	-	-	-	-	-	-	-	-	-	-	-	-	-	-	-	
MILLERS 4 NE	6.13		0.04	0.01	0.07	0.01		0.44	0.03			T	0.02			1.02	0.20							0.08	0.01		0.34	0.25		T	0.92	2.69		
SMITHSBURG 2NW	M	-	-	-	-	-	-	-	-	-	-	-	-	-	-	-	-	-	-	-	-	-	-	-	-	-	-	-	-	-	-	-	-	
APPALACHIAN																																		
MOUNTAIN 07																																		
CUMBERLAND 2	2.97				0.14	0.15			0.33				0.07			0.32	0.05							0.03		0.39	0.03		0.35	1.11				
FROSTBURG 2	3.26			0.01	0.17	0.27			0.28							0.40	0.11							0.07		0.32	0.06		0.39	1.18				
SHARPSBURG 5 S	M 3.76			0.01	0.03	-		0.05	0.37				0.10			0.36	0.49							0.15		0.77			0.18	1.25				
WILLIAMSPORT	M 3.29				0.03	0.02			0.48	0.02			0.12			0.20	0.44	-						0.18		0.68			0.20	0.92				
ALLEGHENY PLATEAU 08																																		
OAKLAND 1 SE	3.24			0.45	0.15	0.38			0.16	0.01			0.30			0.20	0.01							0.14		0.35	0.20		0.40	0.49				
SAVAGE RIVER DAM	M 2.34	-		0.05	0.05	0.20			0.18				0.16			0.11	T							0.10		0.23	0.13		0.38	0.75				

DAILY PRECIPITATION (INCHES)

STATION	TOTAL	DAY OF MONTH																													
		01	02	03	04	05	06	07	08	09	10	11	12	13	14	15	16	17	18	19	20	21	22	23	24	25	26	27	28	29	30
SINES DEEP CREEK	M 2.90				0.16	0.35			0.32				0.26	-		0.28							0.22			0.30	0.20		0.32	0.49	
DELAWARE																															
NORTHERN 01																															
WILMINGTON NEW CASTLE CO AP	6.84		T	0.07	0.06			0.54	0.14			T			0.94							T			0.48	0.01		0.06	0.65	3.89	
WILMINGTON PORTER RES	8.10		T	T	T	T		0.15	0.55			T			1.78						T			0.28	0.25		T	0.17	4.92		
SOUTHERN 02																															
DOVER	4.07		T					0.30	0.08						0.86	0.39						0.02			0.20			0.18	2.04		

DAILY TEMPERATURES (°F)

STATION	OB. TIME	MAX/MIN	DAY OF MONTH																															AVERAGE				
			01	02	03	04	05	06	07	08	09	10	11	12	13	14	15	16	17	18	19	20	21	22	23	24	25	26	27	28	29	30	31					
MARYLAND SOUTHERN EASTERN SHORE 01 ASSATEAGUE	VA	MAX MIN																																				M M M
PRINCESS ANNE	17	MAX MIN	61 35	73 42	70 49					63 36	67 53					80 55																					M M M	
SALISBURY 2N	17	MAX MIN	60 35	69 49	69 48	62 47	63 31	59 36	58 57	65 65	68 38	78 55	75 51	80 53	77 62	76 42	88 ^s 44	51 36	54 36	64 43	58 36	67 43	77 48		62 40	68 38	72 49	71 45		55 42	68 44			68	66.3 44.2			
SALISBURY FAA AP	24	MAX MIN	62 33	73 41	68 49	66 51	64 45	61 32	63 34	68 53	67 39	70 36	80 56	77 51	83 64	79 36	51 34	53 34	56 38	67 42	60 41	69 40	79 41	63 49	65 43	68 36	74 53	68 44	63 42	56 48	69 56			67.1 43.8				
SNOW HILL 4 N	17	MAX MIN	61 29	70 39	70 46	65 46	64 46	62 30	54 31	67 51	66 35	66 33	79 50	78 42	79 51	75 65	72 60	67 31	58 29	55 34	55 41	59 38	77 37	76 49	64 37	65 33	73 50	73 45	62 39	54 48	65 51			66.6 41.7				
CENTRAL EASTERN SHORE 02 ROYAL OAK 2 SSW	17	MAX MIN	60 35	67 38	66 47	63 47	59 45	58 38	58 39	65 48	65 39	68 37	78 55	75 50	78 54	77 60	70 49	51 30	54 30	53 39	67 40	65 44	66 47	74 48	67 50	64 53	70 40	75 50	74 48	62 44	55 45	68 48			65.7 44.6			
LOWER SOUTHERN 03 MECHANICSVILLE 5 NE	07	MAX MIN	65 36	64 36	66 37	65 41	62 43	63 30	58 30	56 39	66 37	67 36	71 36	72 50	74 49	84 49	85 62	71 30	49 28	53 30	53 39	65 41	62 34	67 38	77 48	62 40	64 39	64 42	77 48	67 43	60 45	58 47			65.6 40.1			
SOLOMONS	08	MAX MIN	62 38	49 40	63 44	59 46				52 42		64 41	63 52	71 57	86 52	78 57	77 54	67 32					60 40	63 49	70 51	70 45	63 46	72 51	70 51	65 49	57 49			66.3 46.7				
UPPER SOUTHERN 04 BALTIMORE WASH INTL AP	24	MAX MIN	62 38	62 40	63 48	54 46	57 42	59 33	53 38	64 43	66 36	70 35	80 51	73 49	83 49	78 62	67 35	49 31	52 30	52 37	68 39	61 43	67 34	60 47	64 41	65 38	76 49	66 44	60 48	65 47	66 48	50 47	65 48			64.1 41.9		
BELTSVILLE	08	MAX MIN	65 33	65 39	66 46	66 47	57 41	55 29	59 39	55 36	63 36	69 52	79 50	74 49	82 58	76 64	67 31	48 34	53 39	54 41	68 34	61 39	70 46	72 49	57 41	63 39	64 49	65 44	65 46	75 47	60 46	52 47			64.2 42.5			
DALECARLIA RSVR	08	MAX MIN	63 41	66 41	66 41	67 47	67 31	56 34	60 40	63 38	66 37	71 44	82 50	77 49	84 58	76 64	68 31	48 32	54 35	54 36	68 42	71 37	75 42	75 49	58 45	68 40	75 49	68 44	75 44	67 47	61 47	52 47			66.0 42.9			
LAUREL 3 W	24	MAX MIN	65 43	66 37	66 50	55 45	56 44	59 34	50 37	63 37	64 40	70 46	80 58	75 54	83 62	77 80	69 36	49 33	54 29	53 32	70 40	62 45	70 38	74 49	60 40	69 46	64 47	76 45	66 48	60 45	48 47	65 47			64.6 43.2			
MARYLAND SCIENCE CENTER	24	MAX MIN	57 44	62 45	66 50	54 47	56 45	60 40	55 42	65 52	67 47	72 45	82 54	72 57	84 56	80 62	66 36	54 33	51 39	62 46	80 48	69 45	61 45	67 52	59 47	65 43	66 49	78 51	66 49	62 50	51 48	66 48			64.5 47.0			
NATL ARBORETUM DC	07	MAX MIN	70 38	68 40	67 45	69 48	61 44	60 32	62 41	58 41	73 40	72 39	81 47	77 52	86 51	80 66	72 36	61 34	62 37	55 40	55 37	62 40	55 37	72 43	77 51	66 43	70 43	66 52	70 46	77 46	62 50	59 50			68.6 44.2			
OXON HILL	08	MAX MIN	66 40	68 41	68 41	68 48	62 45	59 35	62 33	54 43	66 42	72 39	82 54	77 52	85 55	78 63	72 32	51 32	55 35	70 37	62 48	72 47	72 47	60 48	65 43	67 44	76 50	69 47	61 48	49 46	52 46			66.2 44.2				
UPPER MARLBORO 3 NNW	08	MAX MIN	64 34	66 37	64 41	68 47	59 44	58 29	60 33	57 39	65 36	66 35	70 40	80 52	74 48	84 53	78 65	49 31	53 29	53 37	68 42	62 33	68 42	77 49	60 41	64 39	64 50	76 45	67 43	60 46	53 47			65.3 41.5				
NORTHERN CENTRAL 06 ABERDEEN PHILLIPS FLD	07	MAX MIN	63 36	59 36	61 42	63 46	54 42	56 34	58 34	55 42	64 36	65 37	68 38	79 49	72 49	79 51	77 64	70 31	46 32	54 37	52 37	67 37	66 35	68 48	61 39	64 40	67 40	71 44	63 42	65 46	50 47			63.2 40.9				

DAILY TEMPERATURES (°F)

STATION	OB. TIME	MAX/MIN	DAY OF MONTH																															AVERAGE	
			01	02	03	04	05	06	07	08	09	10	11	12	13	14	15	16	17	18	19	20	21	22	23	24	25	26	27	28	29	30	31		
BRIGHTON DAM	08	MAX	62	63	64		54	55	57	52	62	63	70	80	74	82	77	67	46	52	53	66	59	69	75	58	63	65	76	63	60	50		63.3	
		MIN	31	37	43		43	28	37	38	33	32	32	46	48	49	61	30	28	32	34	40	32	31	45	37	38	47	48	45	46	46		39.2	
CONOWINGO DAM	07	MAX	58	55	58	60	51	53	54	52	63	61	66	75	69	75	76	66	46	52	50	65	59	68	66	66	66	62	69	62	49	63		61.2	
		MIN	34	36	40	44	43	35	34	36	37	35	35	35	47	47	60	32	31	33	37	42	34	35	35	35	33	37	37	40	42	47		38.3	
CYLBURN	08	MAX	62	59	62	63	52	54	58	57	63	64	70	80	71	82	77	64	46	51	49	68	59	65	71	58	63	64	75	64	61		63.2		
		MIN	36	38	42	44	44	33	39	40	38	37	40	51	52	58	60	29	30	33	39	44	34	47	45	40	41	47	44	43	46	42		41.9	
DAMASCUS 3 SSW	22	MAX	63	64	63	53	53	58	46	60	63	63	79	74	82	76	68	44	54	53	65	60	69	67	54	60	65	74	63	59	47	64		62.1	
		MIN	35	41	49	45	41	30	38	46	38	38	57	49	50	62	34	27	32	31	39	41	33	49	44	37	45	45	38	46	44	46		41.7	
EMMITSBURG 2 SE	07	MAX	65	64	63	58	53	54	58	48	62	66	69	76	76	83	76	70	45	55	56	65	65	71	72	58	65	65	77	64	61	49		63.6	
		MIN	32	32	41	47	46	30	30	39	37	34	31	49	49	52	63	29	29	30	33	39	35	34	46	37	40	40	40	41	45		38.9		
FREDERICK 2 NNE	07	MAX																																	M
		MIN																																	M
MILLERS 4 NE	18	MAX	61	61	60	53	50	56	56	58	62	66	75	71	80	77	71	44	52	54	64	63	68	71	67	60	64	72	70	61	53	55		62.5	
		MIN	31	40	47	42	42	30	36	46	38	33	51	44	50	58	38	26	29	29	37	42	31	48	42	35	39	44	36	38	44	42		39.6	
SMITHSBURG 2NW	08	MAX																																	M
		MIN																																	M
APPALACHIAN MOUNTAIN 07																																			
CUMBERLAND 2	18	MAX	65	74	67	63	51	51	67	44	59	63	76	75	80	88	78	60	52	60	63	69	73	81	75	56	68	73	74	72	63	50		66.3	
		MIN	33	34	49	50	43	28	28	38	33	35	35	45	47	52	60	28	28	30	38	39	39	39	45	35	36	47	39	40	49	48		39.7	
FROSTBURG 2	07	MAX	56	73	63	58	52	45	56	48	54	58	70	65	73	83	73	56	44	54	59	63	65	74	66	47	60	62	67	64	55	43		60.2	
		MIN	31	35	45	43	35	24	24	33	33	32	36	38	38	54	56	20	20	28	30	36	35	35	36	29	29	41	33	34	41	40		34.8	
SHARPSBURG 5 S	07	MAX	66	67	69	63	57	53	59	47	60	64	71	79	76	84	76	67	47	56	56	67	64	71	71	55	65	68	76	65	60	48		64.2	
		MIN	30	30	40	47	39	26	26	39	32	30	30	40	40	52	63	28	28	32	34	36	33	34	39	29	29	39	35	35	46	45		36.2	
WILLIAMSPORT	06	MAX	63	65	66	62	60	53	60	47	61	62	72	76	73	84	76	68		56	58	67	67	71	69	56	64	65	73	66	62	51		64.6	
		MIN	34	34	43	49	36	40	30	40	44	37	36	55	46	53	62	33		28	33	40	40	36	49	44	37	42	46	41	44	46		41.3	
ALLEGHENY PLATEAU 08																																			
OAKLAND 1 SE	07	MAX	55	71	64	61	66	41	54	54	52	55	67	63	64	81	81	58	58	53	67	62	63	77	62	47	61	61	61	66	55	49		61.0	
		MIN	25	31	46	47	34	20	21	36	26	25	31	39	39	39	39	20	20	30	33	34	32	34	36	25	28	40	35	36	44	44		33.0	
SAVAGE RIVER DAM	08	MAX		71	65	58	54	44	55	52	54	56	70	67	72	83	74	57	45	54	60	65	63	73	65	48	62	63	65	66	55	46		60.8	
		MIN		31	45	45	40	26	27	36	31	30	30	39	39	47	53	26	25	30	33	35	35	35	41	30	31	40	36	36	45	44		35.9	
SINES DEEP CREEK	07	MAX	54	71	60	58	65	43	56	50	53	55	69	63		82	71	55	44	55	67	61	67	77	63	47	59	63	62	65	55	46		59.9	
		MIN	25	29	40	43	36	23	22	36	28	27	27	37		36	51	22	22	28	30	32	33	32	38	26	26	36	33	33	41	43		32.2	
DELAWARE NORTHERN 01																																			
WILMINGTON NEW CASTLE CO AP	24	MAX	59	59	65	52	57	60	53	66	65	64	79	72	83	78	71	50	54	54	69	60	67	74	61	63	63	72	64	63	50	62		63.6	
		MIN	35	41	46	46	39	32	38	45	34	36	49	50	52	60	37	31	34	39	40	41	35	47	40	39	39	48	42	39	46	45		41.5	
WILMINGTON PORTER RES	24	MAX	58	58	63	63	54	57	55	63	62	64	77	71	80	76	68	44	51	52	64	56	66	73	73	60	64	69	60	62	48	65		62.5	
		MIN	37	39	47	44	39	34	37	47	40	39	50	51	51	59	37	29	34	36	39	44	38	38	38	40	43	48	43	43	43	43		41.7	
SOUTHERN 02																																			
DOVER	16	MAX	58	63	63	60	61	56	52	65	65	68	80	78	81	78	76	50	51	51	67	56	68	77	67	63	62	72	64	63	60	64		64.6	

MARYLAND AND DELAWARE
201404

DAILY TEMPERATURES (°F)

STATION	OB. TIME	MAX/MIN	DAY OF MONTH																															AVERAGE
			01	02	03	04	05	06	07	08	09	10	11	12	13	14	15	16	17	18	19	20	21	22	23	24	25	26	27	28	29	30	31	
		MIN	34	40	47	44	43	34	41	49	43	36	54	49	51	65	50	33	36	37	40	41	37	45	46	40	37	48	45	43	46	45		43.3

SNOWFALL AND SNOW ON GROUND (INCHES)

STATION	DAY OF MONTH																															
	01	02	03	04	05	06	07	08	09	10	11	12	13	14	15	16	17	18	19	20	21	22	23	24	25	26	27	28	29	30	31	
MARYLAND SOUTHERN EASTERN SHORE 01																																
ASSATEAGUE	SNOWFALL																															
PRINCESS ANNE	SNOWFALL																															
SALISBURY 2N	SNOWFALL																															
SALISBURY FAA AP	SNOWFALL																															
	SN ON GND																															
SNOW HILL 4 N	SNOWFALL																															
UPPER SOUTHERN 04																																
BALTIMORE WASH INTL AP	SNOWFALL														T																	
	SN ON GND																															
BELTSVILLE	SNOWFALL															T																
	SN ON GND																															
DALECARLIA RSVR	SNOWFALL																															
	SN ON GND		-							-																						
	WTR EQUIV		-							-																						
LAUREL 3 W	SNOWFALL																															
MARYLAND SCIENCE CENTER	SNOWFALL																															
NATL ARBORETUM DC	SNOWFALL	-	-	-	-	-	-	-	-	-	-	-	-	-	-	-	-	-	-	-	-	-	-	-	-	-	-	-	-	-	-	
OXON HILL	SNOWFALL															T																
	SN ON GND																															
UPPER MARLBORO 3 NNW	SNOWFALL																															
NORTHERN CENTRAL 06																																
DAMASCUS 3 SSW	SNOWFALL														T	T																
	SN ON GND																															
EMMITSBURG 2 SE	SNOWFALL																															
	SN ON GND																															
	WTR EQUIV																															
FREDERICK 2 NNE	SNOWFALL																															
MILLERS 4 NE	SNOWFALL														T	0.3																
	SN ON GND																															
	WTR EQUIV																															
SMITHSBURG 2NW	SNOWFALL																															
APPALACHIAN MOUNTAIN 07																																
FROSTBURG 2	SNOWFALL	-	-	-	-	-	-	-	-	-	-	-	-	-	-	0.2		-	-	-	-	-	-	-	-	-	-	-	-	-	-	
	SN ON GND	-	-	-	-	-	-	-	-	-	-	-	-	-	-	T		-	-	-	-	-	-	-	-	-	-	-	-	-	-	
SHARPSBURG 5 S	SNOWFALL																															
WILLIAMSPORT	SNOWFALL																															
	SN ON GND																															
	WTR EQUIV																															

Snowfall: Includes snow and ice. Values for NWS stations (J index note) are Mid-Mid (LST).

Snow on ground: Includes snow, sleet, ice, and hail. Values for NWS stations (J index note) are observed at 12 UTC (GMT).

Water Equivalent: Given for NWS stations (J index note) only, when snow depth is 2 inches or more, and is measured at 18 UTC (GMT)

SNOWFALL AND SNOW ON GROUND (INCHES)

STATION	DAY OF MONTH																															
	01	02	03	04	05	06	07	08	09	10	11	12	13	14	15	16	17	18	19	20	21	22	23	24	25	26	27	28	29	30	31	
ALLEGHENY PLATEAU 08																																
OAKLAND 1 SE																0.1																
SAVAGE RIVER DAM																																
SINES DEEP CREEK																0.6	-	-	-	-	-	-	-	-	-	-	-	-	-	-	-	-
																1	-	-	-	-	-	-	-	-	-	-	-	-	-	-	-	-
DELAWARE																																
NORTHERN 01																																
WILMINGTON NEW CASTLE CO AP																																
WILMINGTON PORTER RES																																

Snowfall: Includes snow and ice. Values for NWS stations (J index note) are Mid-Mid (LST).

Snow on ground: Includes snow, sleet, ice, and hail. Values for NWS stations (J index note) are observed at 12 UTC (GMT).

Water Equivalent: Given for NWS stations (J index note) only, when snow depth is 2 inches or more, and is measured at 18 UTC (GMT)

PAN EVAPORATION AND WIND

STATION	DAY OF MONTH																															TOTAL OR AVERAGE	
	01	02	03	04	05	06	07	08	09	10	11	12	13	14	15	16	17	18	19	20	21	22	23	24	25	26	27	28	29	30	31		
MARYLAND UPPER SOUTHERN 04 BELTSVILLE	WIND	0	31	20	58	54	107	30	60	66	65	107	64	52	131	133	-	59	55	21	-	88	20	82	126	53	74	97	50	47	67	1947E	
	EVAP	0.00	0.12	0.05	0.14	0.06	0.22	0.14	0.05	0.08	0.21	0.27	0.16	0.27	0.27	0.22	-	0.12	0.16	0.08	-	0.33	0.18	0.11	0.27	0.18	0.12	0.28	0.22	0.06	0.05	4.74E	
	MAX	64	64	61	58	54	46	52	49	51	50	60	60	62	69	72	-	48	50	54	-	68	72	66	62	66	62	66	64	62	46 ¹	59.8	
	MIN	36	37	42	46	44	34	34	40	40	38	39	50	50	50	58	-	30 ^x	36	38	-	39	39	44	36	36	44	44	44	46	45	41.8	
UPPER MARLBORO 3 NNW	WIND	-	-	-	-	-	-	-	-	-	-	-	-	-	-	-	-	-	-	-	-	-	-	-	-	-	-	-	-	-	-	M	
	EVAP	-	-	-	-	-	-	-	-	-	-	-	-	-	-	-	-	-	-	-	-	-	-	-	-	-	-	-	-	-	-	M	
	MAX	-	-	-	-	-	-	-	-	-	-	-	-	-	-	-	-	-	-	-	-	-	-	-	-	-	-	-	-	-	-	M	
	MIN	-	-	-	-	-	-	-	-	-	-	-	-	-	-	-	-	-	-	-	-	-	-	-	-	-	-	-	-	-	-	M	
ALLEGHENY PLATEAU 08 SAVAGE RIVER DAM	WIND	-	-	-	-	-	-	-	-	-	-	-	-	-	-	-	-	-	-	-	-	-	-	-	-	-	-	-	-	-	-	M	
	EVAP	-	-	-	-	-	-	-	-	-	-	-	-	-	-	-	-	-	-	-	-	-	-	-	-	-	-	-	-	-	-	M	
	MAX	-	-	-	-	-	-	-	-	-	-	-	-	-	-	-	-	-	-	-	-	-	-	-	-	-	-	-	-	-	-	-	M
	MIN	-	-	-	-	-	-	-	-	-	-	-	-	-	-	-	-	-	-	-	-	-	-	-	-	-	-	-	-	-	-	-	M

Evaporation: Is measured in hundredths of inches.

Wind: Is measured in miles.

Max and Min: The maximum and minimum temperatures (Fahrenheit) of the water in the evaporation pan.

STATION INDEX

STATION	INDEX NO.	DIVISION	COUNTY	LATITUDE	LONGITUDE	ELEVATION (IN FEET)	OBSERVATION TIME AND TABLES			
							LOCAL STD TIME			
							TEMP	PRECIP	EVAP	SPECIAL SEE (NOTES)
MARYLAND										
ABERDEEN PHILLIPS FLD	0015	06	HARFORD	39 28	76 10W	57	07	07		CH
ASSATEAGUE	0335	01	WORCESTER	38 4	75 13W	10	VAR	VAR		H
BALTIMORE WASH INTL AP R	0465	04	ANNE ARUNDEL	39 10	76 41W	156	24	24		HJ
BELTSVILLE	0700	04	PRINCE GEORGE'S	39 2	76 56W	145	08	08	08	CH
BRIGHTON DAM	1125	06	MONTGOMERY	39 11	77 0W	330	08	08		H
CONOWINGO DAM	2060	06	HARFORD	39 39	76 11W	40	07	07		H
CUMBERLAND 2	2282	07	ALLEGANY	39 39	78 45W	730	18	18		H
CYLBURN	2308	06	BALTIMORE	39 21	76 39W	235	08	08		H
DALECARLIA RSVR	2325	04	DISTRICT OF COLUMBIA	38 56	77 7W	150	08	08		H
DAMASCUS 3 SSW	2336	06	MONTGOMERY	39 16	77 14W	700	22	22		H
EMMITSBURG 2 SE	2906	06	FREDERICK	39 41	77 17W	403	07	07		H
FREDERICK 2 NNE	3353	06	FREDERICK	39 26	77 24W	280	07	07		H
FROSTBURG 2	3415	07	ALLEGANY	39 40	78 56W	2170	07	07		H
LAUREL 3 W	5111	04	PRINCE GEORGE'S	39 5	76 54W	400	24	24		H
MARYLAND SCIENCE CENTER R	5718	04	BALTIMORE (CITY)	39 17	76 37W	20	24	24		H
MECHANICSVILLE 5 NE	5865	03	ST. MARY'S	38 28	76 42W	100	07	07		H
MILLERS 4 NE	5934	06	CARROLL	39 43	76 48W	860	18	18		CH
NATL ARBORETUM DC	6350	04	DISTRICT OF COLUMBIA	38 55	76 58W	50	07	07		H
OAKLAND 1 SE	6620	08	GARRETT	39 25	79 24W	2420	07	07		H
OXON HILL	6800	04	PRINCE GEORGE'S	38 47	76 60W	120	08	08		H
PRINCESS ANNE	7330	01	SOMERSET	38 13	75 41W	20	17	17		H
ROYAL OAK 2 SSW	7806	02	TALBOT	38 43	76 11W	10	17	17		H
SALISBURY 2N	8004	01	WICOMICO	38 24	75 36W	20	17	17		H
SALISBURY FAA AP	8005	01	WICOMICO	38 20	75 31W	48	24	24		H
SAVAGE RIVER DAM	8065	08	GARRETT	39 31	79 8W	1495	08	08	08	CH
SHARPSBURG 5 S	8207	07	WASHINGTON	39 24	77 43W	500	07	07		H
SINES DEEP CREEK	8315	08	GARRETT	39 31	79 25W	2040	07	07		H
SMITHSBURG 2NW	8371	06	WASHINGTON	39 40	77 35W	670	08	08		H
SNOW HILL 4 N	8380	01	WORCESTER	38 14	75 23W	30	17	17		H
SOLOMONS	8405	03	CALVERT	38 19	76 27W	12	08	08		H
UPPER MARLBORO 3 NNW	9070	04	PRINCE GEORGE'S	38 51	76 46W	130	08	08	08	H
WILLIAMSPORT	9570	07	WASHINGTON	39 37	77 51W	360	06	06		H
DELAWARE										
DOVER	2730	02	KENT	39 15	75 31W	30	16	16		H
WILMINGTON NEW CASTLE CO AP R	9595	01	NEW CASTLE	39 40	75 36W	79	24	24		HJ
WILMINGTON PORTER RES	9605	01	NEW CASTLE	39 46	75 32W	270	24	24		H

REFERENCE NOTES

STATION NAMES: Name of the city, town or locality. Figures and letters following the station names indicate the distance in miles and direction from the post office or town community center.

DIVISIONS: Areas within a state of similar climatological characteristics. Division averages are calculated using data from stations that record temperature and/or precipitation. Station Precipitation totals flagged with an 'F' or 'M' are excluded from the Divisional Average calculations of precipitation. Stations with monthly Temperature averages flagged with an 'F' or 'M' are included in the Divisional Average if there are no more than 9 flagged or missing daily values in the month, else they are excluded from the divisional average for temperature.

NORMALS: The average value of the meteorological element over a time period. Effective 1 January 2012, the averaging period is 1981 to 2010. The normals for National Weather Service localities have been adjusted so as to be representative for the current observation site.

MONTHLY DEGREE DAY TOTALS: One heating (cooling) degree day is accumulated for each whole degree that the daily mean temperature is below (above) 65 degrees Fahrenheit.

PRECIPITATION: Values shown in hundredths of inches are water equivalent totals, i.e., total of liquid and melted frozen precipitation. In the "Monthly Summarized Data" table the total snow and sleet values shown in tenths of inches are unmelted amounts. The max depth on ground values of snow and sleet shown in whole inches are cumulative unmelted amounts. The number of days with .10, .50, 1.00 or more refers to water equivalents.

PRECIPITATION QUALITY CONTROL: The NCDC quality control process may flag precipitation data that are spatially inconsistent, exceed climatological limits, or are inconsistent with prevailing weather patterns.

TEMPERATURE: Original temperature values are given in the "Daily Temperature" table. Summary temperature information (averages, departures, extremes, monthly degree day totals) is based on the values labeled MAX/MIN.

WIND: (As shown in the "Evaporation and Wind" table) the total wind movement in miles over the evaporation pan as determined by an anemometer recorder located 6-8 inches above the pan.

SYMBOLS AND LETTERS USED IN THE STATION INDEX TABLE

- C Station is equipped with recording rain gage (R) but values in this bulletin are from a non-recording rain gage unless indicated by an R.
- G Observations appear in the "Soil Temperatures" table.
- H Observations appear in the "Snowfall and Snow on the Ground" table.
- J Station also published as a Local Climatological Data publication.
- VAR Observation time varies.
- SR Observation time near sunrise.
- SS Observation time near sunset.

SYMBOLS AND LETTERS USED IN THE DATA TABLES

(DAILY DATA ARE FOR THE 24 HOURS IMMEDIATELY PRECEDING OBSERVATION TIME.)

BLANK Entries in the "Monthly Summarized Data" table indicate no record.

BLANK Entries in the "Daily Precipitation" and "Snowfall and Snow on the Ground" tables indicate zero.

BLANK Entries in the "Daily Temperature" table indicate a missing record

- No record. Data not recorded or not received in time for publication.
- + Precipitation or temperature extremes occurred on one or more previous dates during the month.
- * Rain gage not read. Precipitation is included in the amount following the asterisks. Time distribution may not be known. A * preceding the monthly total indicates precipitation amount is being carried forward to next month's total, and may include amounts from the previous month(s).
- a As a subscript, indicates accumulated total.

by NCDC's Climate Prediction Branch and its entries for the report. If on the day in which the precipitation was recorded, the precipitation was not recorded, the date of last reading. (Hawaii stations)

B Divisional Departure from normals are computed using 1971-2000 normals.

E Normalized HDD/CDD Calculation. E is appended to the HDD/CDD Calculation when 1-9 individual daily TMAX and/or TMIN values are missing and a Normalized HDD/CDD Calculation is provided. M appears alone if 10 or more daily values are missing.

F Monthly calculation flagged value. F is appended to average and/or total values computed which exclude one or more daily data values that have been flagged by the GHCN-Daily Dataset

M Insufficient or partial data. M is appended to average and/or total values computed with 1-9 daily values missing. M appears alone if 10 or more daily values are missing, (8 or more for wind and evaporation).

N Indicates snow fall or Snowdepth totals are computed with one or more missing days.

R Amounts from recording rain gage.

T Trace. An amount too small to measure.

SEASONAL TABLES: Monthly and seasonal snowfall and heating degree days for the 12 months ending with the June data are published in the July issue of this bulletin. Cooling degree days for the calendar year are published in the "Climatological Data Annual Summary."

Information concerning the history of changes in locations, exposure, etc. of substations is kept on file at the National Climatic Data Center. Historical information of regular National Weather Service Offices may be obtained from the "Local Climatological Data" annual publication. The contents of this publication may be reprinted or otherwise used freely, with proper credit to the National Climatic Data Center. The data are also available digitally.

Effective with the January 2011 Data-Month, COOP Observer Names are no longer included in the Monthly and Annual Climatological Data Publications. This information is not published to ensure the privacy of personal information pursuant to Section 208 of the E-Government Act of 2002 (44 USC 3601).

As of the 2011 Data-Year, Station and Climate Division Maps are no longer being included in the CD Publications. NCDC's Product Development Branch provides updated Station Maps for various data networks via the Historical Observing Metadata Repository: <http://www.ncdc.noaa.gov/homr>.

The GHCN-Daily Quality Control Flags shown below are displayed as superscripts with the data. For more Information on Global Historical Climatology Network - Daily and flags, see: <http://www.ncdc.noaa.gov/oa/climate/ghcn-daily/> and Comprehensive Automated Quality Assurance of Daily Surface Observations. Durre, Imke, Matthew J. Menne, Byron E. Gleason, Tamara G. Houston, Russell S. Vose, 2010: J. Appl. Meteor. Climatol., 49, 1615-1633. doi: 10.1175/2010JAMC2375.1

- | | |
|---|---|
| Blank = Passed All checks | N = failed naught check |
| D = failed duplicate check | O = failed climatological outlier check |
| G = failed gap check | R = failed lagged range check |
| I = failed internal consistency check | S = failed spatial consistency check |
| K = failed streak/frequent-value check | T = failed temporal consistency check |
| L = failed check on length of multiday period | W = temperature too warm for snow |
| M = failed megaconsistency check | X = failed bounds check |
| | Z = flagged as a result of an official Datzilla investigation |

Beginning with the January 2013 CD Publication, monthly mean temperature calculations have changed to the National Data Stewardship Team standard. Monthly maximum and minimum temperatures are not rounded until after the monthly mean temperature is calculated. This is the most accurate outcome, but may be slightly different from the mean derived from rounded monthly maximum and minimum.

Processing Updates and Errata: The CD Publications are periodically reproduced to include the addition of late reports and reported corrections. The GHCND data version noted on the cover of the publication provides the generation date.

The climate division temperature and precipitation values in this publication are based on simple averages from the current set of NWS-Designated Open and Published COOP and First Order Sites within each division. These values differ from those found in NCDC's nClimDiv product. Beginning in February 2014, the nClimDiv product is used

NOAA\National Climatic Data Center
Attn: User Engagement & Services Branch
151 Patton Avenue
Asheville, NC 28801-5001

Customer Services Number: (828) 271-4800, option 2
TDD : (828) 271-4010
Fax number: (828) 271-4876

NCDC now offers free online access to the *Climatological Data* publication.
Go to : www.ncdc.noaa.gov and choose Most Popular.