



CLIMATOLOGICAL DATA

MARYLAND AND DELAWARE

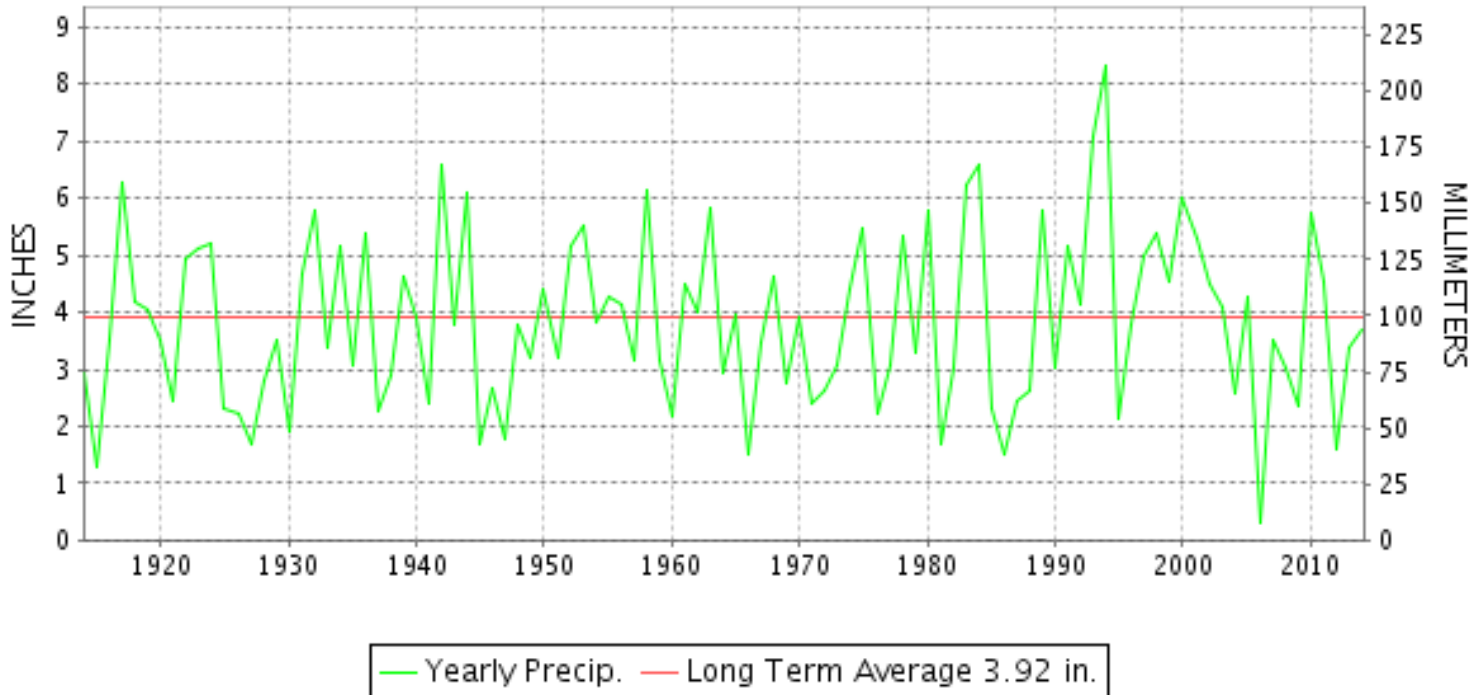
MARCH 2014

VOLUME 118 NUMBER 03

ISSN 0145-0549

GHCND Ver: 3.12-upd-2014070205

MARCH PRECIPITATION BY YEAR



TEMPERATURE AND PRECIPITATION EXTREMES

MARYLAND

HIGHEST TEMPERATURE	75	MARCH 11+	3 STATIONS
LOWEST TEMPERATURE	-12	MARCH 01	OAKLAND 1 SE
GREATEST TOTAL PRECIPITATION	5.40		MILLERS 4 NE
LEAST TOTAL PRECIPITATION	1.59		CUMBERLAND 2
GREATEST 1 DAY PRECIPITATION	2.56	MARCH 30	MILLERS 4 NE
GREATEST TOTAL SNOWFALL	21.9		DAMASCUS 3 SSW
GREATEST DEPTH OF SNOW OR ICE	8		2 STATIONS

"I certify that this is an official publication of the National Oceanic and Atmospheric Administration (NOAA) It is compiled using information from weather observing sites supervised by NOAA/National Weather Service and received at the National Climatic Data Center(NCDC), Asheville, North Carolina 28801."

Director
National Climatic Data Center

noaa

National
Oceanic and
Atmospheric Administration

National
Environmental Satellite, Data
and Information Service

National
Climatic Data Center
Asheville, North Carolina

DELAWARE

HIGHEST TEMPERATURE	69	MARCH 22++	2 STATIONS
LOWEST TEMPERATURE	7	MARCH 04	DOVER
GREATEST TOTAL PRECIPITATION	4.19		WILMINGTON PORTER RES
LEAST TOTAL PRECIPITATION	3.64		DOVER
GREATEST 1 DAY PRECIPITATION	1.51	MARCH 29	WILMINGTON NEW CASTLE CO AP
GREATEST TOTAL SNOWFALL	12.0		DOVER
GREATEST DEPTH OF SNOW OR ICE	4		2 STATIONS

MONTHLY STATION AND DIVISION SUMMARY

STATION	TEMPERATURE (°F)											PRECIPITATION (IN)													
	AVERAGE MAXIMUM	AVERAGE MINIMUM	AVERAGE	DEPARTURE FROM NORMAL	HIGHEST	DATE	LOWEST	DATE	HEATING DEG. DAYS	COOLING DEG. DAYS	NO. OF DAYS				TOTAL	DEPARTURE FROM NORMAL	GREATEST 24 HOURS	DATE	ICE PELLETS, SNOW			NO. OF DAYS			
											MAX		MIN						TOTAL	MAX DEPTH ON GROUND	DATE	.10 OR MORE	.50 OR MORE	1.00 OR MORE	
											>=90	<=32	<=32	<=0											
APPALACHIAN MOUNTAIN 07																									
CUMBERLAND 2	48.4	24.9	36.6	-7.1	75	12	5	01	869	0	0	2	22	0	1.59	-1.78	0.85	30	M 6.6	5	17	3	1	0	
FROSTBURG 2	40.9	18.8	29.8	-6.3	65	12	-7	01	1083	0	0	7	28	1	2.20	-1.74	1.01	30	M 12.1	7	17	5	1	1	
SHARPSBURG 5 S	49.3M	25.7M	37.5M	-3.7	72	12	15	14	845E	0	0	3	21	0	M 3.34	-0.33	1.56	30	M 7.5	M 6	17	7	2	1	
WILLIAMSPORT	46.3	26.8	36.5	-5.2	70	12	3	05	875	0	0	5	20	0	3.58	-0.65	1.10	30	M 3.8	2	03	10	1	1	
--DIVISIONAL DATA----->			35.1	-5.6B											2.46	-0.96B									
ALLEGHENY PLATEAU 08																									
OAKLAND 1 SE	42.4	17.4	29.9	-6.3	66	12	-12	01	1081	0	0	8	26	3	3.56	-0.57	1.10	30	17.1	6	01	8	2	1	
SAVAGE RIVER DAM	42.4M	21.2M	31.8M	-6.0	64	29+	-2	01	1022E	0	0	7	25	1	M 1.14	-2.26	0.79	30	M T	7	04	2	1	0	
SINES DEEP CREEK	43.1	17.6	30.3		62	29	-11	01	1068	0	0	7	31	3	2.92		0.89	30	M 20.2	7	17	8	2	0	
--DIVISIONAL DATA----->			30.7	-6.3B											3.24	-0.63B									
DELAWARE NORTHERN 01																									
WILMINGTON NEW CASTLE CO AP	48.3	28.2	38.3	-4.7	69	22+	8	04+	820	0	0	2	20	0	3.82	-0.10	1.51	29	7.7	4	04	6	3	1	
WILMINGTON PORTER RES	46.5M	26.3M	36.4M	-5.9	66	22	10	04	878E	0	0	5	22	0	4.19	-0.33	1.30	29	M 4.2	3	17	9	4	1	
--DIVISIONAL DATA----->			37.4	-5.3B											4.01	-0.10B									
SOUTHERN 02																									
DOVER	50.4	29.5	39.9	-5.3	69	11	7	04	766	0	0	2	17	0	A 3.64	-0.67	0.51	03	M 12.0	4	04	5	1	0	
--DIVISIONAL DATA----->			39.9	-4.5B											3.64	-0.76B									

DAILY PRECIPITATION (INCHES)

STATION	TOTAL	DAY OF MONTH																																				
		01	02	03	04	05	06	07	08	09	10	11	12	13	14	15	16	17	18	19	20	21	22	23	24	25	26	27	28	29	30	31						
MARYLAND																																						
SOUTHERN																																						
EASTERN SHORE 01																																						
ASSATEAGUE	M	-	-	-	-	-	-	-	-	-	-	-	-	-	-	-	-	-	-	-	-	-	-	-	-	-	-	-	-	-	-	-	-	-	-			
PRINCESS ANNE	M	-	-	-	-	-	-	0.25	-	-	-	-	-	-	-	-	-	-	-	-	-	-	-	-	-	-	-	-	-	-	-	-	-	-	-			
SALISBURY 2N	4.60			0.60				0.15	0.04		0.02		0.07	0.14	0.02			0.01	0.81	T	0.15		0.05	0.02	0.10	0.35				1.10	0.94	0.03						
SALISBURY FAA AP	2.57		T	0.60				0.03			T		0.06			T	0.25	0.18	T	0.06			0.04		0.20	T		T	0.85	0.30	T							
SNOW HILL 4 N	3.97			0.20		T		0.24	0.18		T		T	0.06			0.80	0.10			0.14		T	0.06	0.30	0.50			0.88	0.48	0.03							
CENTRAL																																						
EASTERN SHORE 02																																						
ROYAL OAK 2 SSW	4.11		0.15	0.75					T		T		0.07	0.30			0.35	T	0.08	0.22	T				0.10	0.15		0.02	1.45	0.42	0.05							
LOWER SOUTHERN 03																																						
MECHANICSVILLE 5 NE	4.86			0.69	0.35				T			T		0.80		T		0.64	0.02		0.22					0.26		T	0.11	1.42	0.35							
SOLOMONS	M	-	-	-	-					-		-					0.54				0.09		-	-		0.21			-	-	-	-	-	-	-			
UPPER SOUTHERN 04																																						
BALTIMORE WASH INTL AP	4.38		0.29	0.63									0.10			0.19	0.27		0.23		0.07		T		0.16			0.05	0.99	1.40								
BELTSVILLE	4.01			0.64	0.07								0.20				0.47				0.30					0.22			0.03	0.89	1.19							
DALECARLIA RSVR	5.27			0.69	0.12												1.41				0.23				0.27			0.10	1.40	1.05								
LAUREL 3 W	4.88		0.45	0.44									0.32			0.09	0.62		0.32		0.05				0.25			0.05	1.25	1.04								
MARYLAND SCIENCE CENTER	4.20		0.21	0.41									0.14			0.15	0.27		0.25		0.02				0.13			0.04	1.08	1.50								
NATL ARBORETUM DC	3.89			T	1.00								0.03			T	0.67	0.01		0.23					0.11		T	T	0.05	0.91	0.88							
OXON HILL	4.35			0.65	0.51								0.16				0.52	T		0.17			T		0.28		T	T	0.14	1.08	0.84							
UPPER MARLBORO 3 NNW	3.87			0.68	0.12								0.06				0.42	T		0.24					0.16			0.06	1.22	0.91								
NORTHERN CENTRAL 06																																						
ABERDEEN PHILLIPS FLD	A 3.68			*	0.52 _a								0.19				0.32	0.01		0.28					0.12		T		0.10	1.05	1.09							
BRIGHTON DAM	4.73			0.50	0.20												0.80			0.25			0.10		T	0.25		0.03	0.13	1.22	1.25							
CONOWINGO DAM	3.33			0.28	0.08												0.18			0.37									1.07	1.35								
CYLBURN	MA 1.74			*	0.71 _a								-			*	0.52 _a		-	0.36					0.11			T	0.04	-	-							
DAMASCUS 3 SSW	5.17		0.16	0.75							T		0.36			0.07	0.56		0.15	0.02	0.03			T	0.35		0.17	0.90	1.65									
EMMITSBURG 2 SE	3.08			0.20	0.05								0.24				0.10	0.10		0.09						0.20		0.13	1.50	0.47								
FREDERICK 2 NNE	M	-	-	-	-	-	-	-	-	-	-	-	-	-	-	-	-	-	-	-	-	-	-	-	-	-	-	-	-	-	-	-	-	-	-	-		
MILLERS 4 NE	5.40		0.11	0.32									0.20	0.22			T	0.21		0.18	0.05				0.18	0.03		0.11	0.34	2.56	0.89							
SMITHSBURG 2NW	M	-	-	-	-	-	-	-	-	-	-	-	-	-	-	-	-	-	-	-	-	-	-	-	-	-	-	-	-	-	-	-	-	-	-	-		
APPALACHIAN																																						
MOUNTAIN 07																																						
CUMBERLAND 2	1.59			0.19									0.09			0.02	0.32	0.01		0.01			0.02		0.05		T			0.85	0.03							
FROSTBURG 2	2.20			0.30							T		0.19			0.13	0.38	0.02		0.03	T	0.03		0.08			T		1.01	0.03								
SHARPSBURG 5 S	M 3.34	-	-	-	-	-	-						0.17				0.43	0.03		0.14			T		0.24		T	0.02	0.12	1.56	0.63							
WILLIAMSPORT	3.58			0.48	0.02								0.13				0.22	0.25		0.47					0.17	0.17		0.11	1.10	0.46								
ALLEGHENY PLATEAU 08																																						
OAKLAND 1 SE	3.56			0.65									0.45			0.36	0.44			0.12	0.11				0.01	0.28	0.03			1.10								
SAVAGE RIVER DAM	M 1.14			0.26	T								0.09			T	-	T							T		T			0.79								

DAILY PRECIPITATION (INCHES)

STATION	TOTAL	DAY OF MONTH																														
		01	02	03	04	05	06	07	08	09	10	11	12	13	14	15	16	17	18	19	20	21	22	23	24	25	26	27	28	29	30	31
SINES DEEP CREEK	2.92			0.45									0.56	0.02	0.15		0.44					0.12	0.04			T	0.03	0.10	T	0.02	0.89	0.10
DELAWARE NORTHERN 01																																
WILMINGTON NEW CASTLE CO AP	3.82		0.09	0.26						T		0.24			T	T	0.32		0.62							0.07		0.03	1.51	0.67	0.01	
WILMINGTON PORTER RES	4.19		0.10	0.16					0.01			0.10					0.10	0.77	0.75						0.12		T	1.30	0.75	0.03		
SOUTHERN 02																																
DOVER	A 3.64			0.51					0.03			0.08	0.20				0.22		0.03	0.23						0.20			*	2.14 _a		

DAILY TEMPERATURES (°F)

STATION	OB. TIME	MAX/MIN	DAY OF MONTH																															AVERAGE		
			01	02	03	04	05	06	07	08	09	10	11	12	13	14	15	16	17	18	19	20	21	22	23	24	25	26	27	28	29	30	31			
MARYLAND SOUTHERN EASTERN SHORE 01 ASSATEAGUE	VA	MAX MIN																																		M M M
PRINCESS ANNE	17	MAX MIN					43		43		58	74						34	41	61	62				39	41			69			62	M M			
SALISBURY 2N	17	MAX MIN	47	63	48	34	42	40	41	61	57	56	73			63	52	67	66	41	41	51	61	62		60	71	61	38	38	36	46	67	65	60	53.8
SALISBURY FAA AP	24	MAX MIN	15	31	18	8	14	27	30	31	39	33	38	38	25	21	42	33	26	31	41	33	40	36	25	25	12	20	36	58	41	38	30.2			
SNOW HILL 4 N	17	MAX MIN	49	66	40	34	44	38	42	62	52	58	75	72	38	55	69	49	32	41	60	62	62	72	52	40	39	36	47	68	67	64	61	53.1		
CENTRAL EASTERN SHORE 02 ROYAL OAK 2 SSW	17	MAX MIN	16	29	16	10	30	29	35	34	35	33	37	38	28	20	41	32	30	32	39	43	32	40	34	24	25	29	20	41	60	40	38	31.9		
LOWER SOUTHERN 03 MECHANICSVILLE 5 NE	07	MAX MIN	46	65	57	34	41	41	40	61	60	59	75	74	64	50	69	68	43	41	58	62	62	72	69	43	40	34	45	67	64	60	59	55.6		
SOLOMONS	08	MAX MIN	13	26	19	7	23	28	32	32	34	30	27	41	34	18	41	33	30	30	32	43	28	36	40	25	21	26	13	34	56	48	38	30.3		
BALTIMORE WASH INTL AP	24	MAX MIN	43	56	39	29	40	39	40	59	53	55	71	70	60	49	66	61	38	41	46	59	54	67	58	44	38	37	45	66	65	60	62	51.9		
BELTSVILLE	08	MAX MIN	15	31	18	13	18	23	29	28	38	32	36	41	20	22	38	33	25	24	33	38	32	35	38	24	23	23	15	38	53	35	34	29.2		
DALECARLIA RSVR	08	MAX MIN	43	44	64	26	30	42	33	39	62	51	58	74	63	33	58	69	42	33	40	44	62	59	70	45	41	35	37	50	68	61	47	49.1		
UPPER MARLBORO 3 NNW	08	MAX MIN	13	21	26	5	8	19	25	28	28	34	34	39	22	21	33	31	25	25	33	34	35	38	39	24	24	25	20	20	50	47	34	27.7		
ABERDEEN PHILLIPS FLD	07	MAX MIN	30	37	37	49					61	58			34	34	59	66	42	33	42	44	60		34	36	36	55					M M			
ABERDEEN PHILLIPS FLD	07	MAX MIN	21	26	26	32					35	38			23	27	30	30	26	26	26	36		26	32	29	27	34					M M			
ABERDEEN PHILLIPS FLD	07	MAX MIN	44	45	34	29	44	31	42	62	49	60	67	67	33	55	66	45	31	41	42	56	53	69	48	39	35	36	44	66	60	56	65	48.8		
ABERDEEN PHILLIPS FLD	08	MAX MIN	14	31	5	4	15	22	29	26	36	37	41	31	20	22	39	26	24	30	35	38	31	34	32	22	24	25	20	35	50	33	39	28.1		
ABERDEEN PHILLIPS FLD	08	MAX MIN	28	42	50	21	34	43	33	43	62	47	59	68	66	32	57	64	45	31	41	42	56	51	69	45	38	33	34	50	66	60	44	46.9		
ABERDEEN PHILLIPS FLD	08	MAX MIN	13	22	21	3	13	22	23	26	34	35	36	39	20	20	32	30	23	23	31	36	30	34	40	23	24	27	20	30	49	44	33	27.6		
ABERDEEN PHILLIPS FLD	08	MAX MIN	28	39	46	54	31	43	43	64	48	60	68	67	33	50	61	67	36	37	42	58	52	70	45	39	39	35	51	53	60	44	48.6			
ABERDEEN PHILLIPS FLD	08	MAX MIN	12	17	21	12	7	23	23	28	36	36	39	39	20	20	24	38	24	24	26	32	36	37	40	22	23	28	22	22	41	42	33	27.3		
ABERDEEN PHILLIPS FLD	24	MAX MIN	41	52	34	30	44	34	45	62	59	58	67	65	58	56	65	65	30	41	40	55	51	70	55	38	32	34	49	65	60	60	65	51.0		
ABERDEEN PHILLIPS FLD	24	MAX MIN	15	32	12	9	18	20	27	30	39	36	47	40	27	24	48	27	22	27	33	37	37	40	38	28	27	22	36	50	14 ^s	37	30.4			
ABERDEEN PHILLIPS FLD	24	MAX MIN	40	47	35	29	43	35	42	62	52	60	69	68	33	52	65	49	32	44	44	58	55	70	50	40	38	37	45	67	61	56	64	49.7		
ABERDEEN PHILLIPS FLD	07	MAX MIN	22	35	17	16	24	23	30	33	41	39	46	32	22	28	44	27	24	31	36	41	39	41	34	24	31	30	27	40	50	37	40	32.4		
ABERDEEN PHILLIPS FLD	07	MAX MIN	29	45	53	22	32	46	35	45	66	51	60	71	67	36	59	68	47	33	47	47	63	54	72	47	41	36	41	51	68	62	49	49.8		
ABERDEEN PHILLIPS FLD	08	MAX MIN	16	24	22	7	17	24	25	27	32	37	40	42	23	22	31	37	24	25	33	39	39	38	41	24	25	29	23	28	46	47	37	29.8		
ABERDEEN PHILLIPS FLD	08	MAX MIN	29	45	54	26	35	46	34	44	65	52	62	72	66	35	60	68	48	30	42	43	59	58	71	51	42	35	38	54	65	63	54	49.9		
ABERDEEN PHILLIPS FLD	08	MAX MIN	12	20	26	11	12	20	23	27	28	37	38	44	21	20	23	37	25	28	30	35	40	40	40	23	23	28	22	28	50	46	34	28.7		
ABERDEEN PHILLIPS FLD	08	MAX MIN	30	47	52	25	35	44	33	41	64	50	60	72	67	34	58	67	45	31	41	42	59	53	70	45	41	34	37	51	67	62	46	48.5		
ABERDEEN PHILLIPS FLD	08	MAX MIN	11	13	25	4	6	15	23	27	27	33	39	38	21	20	29	33	24	24	30	35	34	33	38	23	23	27	19	22	50	46	33	26.6		
ABERDEEN PHILLIPS FLD	07	MAX MIN	26	38	43	20	30	43	34	43	60	45	55	66	63	33	50	63	41	31	45	45	56	54	68	45	38	39	36	47	63	52	47	45.8		
ABERDEEN PHILLIPS FLD	07	MAX MIN	9	13	20	5	12	15	22	26	28	34	38	41	23	23	26	35	24	24	31	37	31	31	38	24	24	25	21	22	45	47	37	26.8		

DAILY TEMPERATURES (°F)

STATION	OB. TIME	MAX/MIN	DAY OF MONTH																															AVERAGE	
			01	02	03	04	05	06	07	08	09	10	11	12	13	14	15	16	17	18	19	20	21	22	23	24	25	26	27	28	29	30	31		
BRIGHTON DAM	08	MAX	29	40	38	48	29	41	32	41	59	45	57	65		30	55	63		38	41	41	55	51	67	44	37	33	34	47	64	55	42	45.6	
		MIN	12	12	11	1	13	20	23	24	35	31	36	35		20	29	35		22	30	35	28	28	37	20	21	24	17	21	42	42	33	25.4	
CONOWINGO DAM	07	MAX	22	36	38	20	27	38	31	38	56	42	52	61	59	31	48	48	38	34	42	44	54	53	67	44	36	37	35	42	62	50	47	43.0	
		MIN	9	10	18	8	12	13	20	27	31	31	33	34	22	20	25	31	33	23	29	34	29	28	34	23	20	24	21	22	42	45	37	25.4	
CYLBURN	08	MAX	25	41	46	18	29	41	33	40	58	45	59	66	65	32	51	62	44	31	42	43	54	52	68	45	37	34	34	43	64			44.9	
		MIN	9	17	14	9	13	17	21	29	36	36	41	43	19	18	28	34	23	23	29	36	36	35	38	20	23	26	21	30	41			26.4	
DAMASCUS 3 SSW	22	MAX	39	47	33	26	38	31	37	57	50	59	65	62	32	55	62	45	29	40	40	48	48	67	50	34	32	31	47	62	57	46	62	46.2	
		MIN	14	32	6	4	15	19	25	26	36	34	49	32	15	21	45	26	22	27	32	32	32	37	32	16	26	23	18	36	46	32	36	27.3	
EMMITSBURG 2 SE	07	MAX	25	39	38	32	30	42	32	39	59	45	64	67	66	33	56	62	43	30	45	44	54	55	68	46	39	33	37	47	63	56	47	46.3	
		MIN	7	11	16	-2	-2	8	18	23	23	34	34	38	19	18	26	32	22	21	29	35	36	32	33	19	19	22	18	17	17	43	36	22.6	
FREDERICK 2 NNE	07	MAX																																	M
		MIN																																	M
MILLERS 4 NE	18	MAX	39	39	33	30	39	32	39	54	48	58	62	64	53	51	59	54	32	43	41	50	49	65	59	40	33	33	44	62	61	47	59	47.5	
		MIN	10	28	11	5	10	14	23	24	33	31	41	42	15	18	40	29	19	26	31	36	29	34	33	16	20	22	16	33	46	32	32	25.8	
SMITHSBURG 2NW	08	MAX																																	M
		MIN																																	M
APPALACHIAN MOUNTAIN 07																																			
CUMBERLAND 2	18	MAX	32	43	40	25	36	48	39	45	62	47	68	75	63	34	65	60	40	33	42	51	52	55	63	43	42	37	37	55	69	52	47	48.4	
		MIN	5	14	15	9	9	19	21	25	25	31	41	43	12	12	29	31	23	23	29	38	33	34	34	18	19	23	19	22	44	36	36	24.9	
FROSTBURG 2	07	MAX	24	40	40	14	33	38	31	40	51	37	56	65	55	26	57	52	34	26	36	43	44	52	55	36	33	31	26	49	61	44	38	40.9	
		MIN	-7	11	6	4	3	13	13	20	23	34	43	4	3	26	25	17	16	21	30	30	30	29	11	12	15	14	18	37	29	29	18.8		
SHARPSBURG 5 S	07	MAX							33	42	62		68	72	68	31	59	62	40	31	43	40	54	51	68	44	39	32	34	49	65	51	44	49.3	
		MIN							20	22	23		29	38	17	15	29	28	22	22	28	32	29	30	31	16	16	23	16	16	43	40	31	25.7	
WILLIAMSPORT	06	MAX	26	43	44	30	28	42	32	42	60	44	64	70	62	32	59	59	43	33	41	41	53	54	64	45	39	35	36	49	63	55	46	46.3	
		MIN	4	13	30	7	3	13	18	26	26	35	35	51	30	17	23	43	22	22	28	33	39	34	37	30	22	27	24	18	41	46	34	26.8	
ALLEGHENY PLATEAU 08																																			
OAKLAND 1 SE	07	MAX	20	44	46	15	40	39	30	43	53	37	57	66	59	30	55	51	34	26	35	58	43	55	56	33	31	29	24	53	61	50	41	42.4	
		MIN	-12	12	5	-8	-8	15	15	21	25	23	34	32	5	4	30	24	17	17	17	33	33	33	29	9	9	14	9	16	35	27	25	17.4	
SAVAGE RIVER DAM	08	MAX	23	42	41	19	29	42	31	38	55	39	58	64	56	26	57	53		27	36	47	45	52	57	35	33	33	28	51	64	47	43	42.4	
		MIN	-2	12	10	3	4	16	18	23	27	28	35	36	10	9	26	27		20	24	33	37	30	31	16	15	20	16	16	35	32	29	21.2	
SINES DEEP CREEK	07	MAX	27	44	40	40	38	37	31	46	52	37	56	61	52	28	55	50	39	29	37	54	43	52	54	31	42	32	24	52	62	51	40	43.1	
		MIN	-11	8	6	-4	-3	11	17	20	22	24	30	31	6	6	26	25	19	19	24	29	32	29	31	12	11	16	10	13	32	29	25	17.6	
DELAWARE NORTHERN 01																																			
WILMINGTON NEW CASTLE CO AP	24	MAX	41	43	33	30	44	33	41	59	46	57	65	69	33	52	65	44	31	46	46	57	56	69	48	38	40	37	44	66	55	49	61	48.3	
		MIN	13	30	8	8	16	22	28	32	36	34	37	26	21	23	40	30	24	30	34	39	31	36	29	22	21	26	21	36	47	38	37	28.2	
WILMINGTON PORTER RES	24	MAX	38	40	31	26	39	29	38	54	45	54	62	65	29	48	60		30	44	44	54	53	66	47	47	37	37	42	63	57	57	58	46.5	
		MIN	13	15	13	10	19	20	25	31	36	34	41	28	18	18	18		21	19	32	39	31	36	29	20	23	23	21	21	47	42	47	26.3	
SOUTHERN 02																																			
DOVER	16	MAX	41	50	34	32	42	39	39	60	48	56	69	68	58	53	64	43	29	43	46	58	52	66	65	37	39	36	45	65	61	60	60	50.4	

MARYLAND AND DELAWARE
201403

DAILY TEMPERATURES (°F)

STATION	OB. TIME	MAX/MIN	DAY OF MONTH																															AVERAGE
			01	02	03	04	05	06	07	08	09	10	11	12	13	14	15	16	17	18	19	20	21	22	23	24	25	26	27	28	29	30	31	
		MIN	15	29	19	7	19	22	27	31	34	33	38	41	23	23	41	28	24	25	33	41	36	39	37	21	20	26	20	36	48	42	35	29.5

SNOWFALL AND SNOW ON GROUND (INCHES)

STATION		DAY OF MONTH																															
		01	02	03	04	05	06	07	08	09	10	11	12	13	14	15	16	17	18	19	20	21	22	23	24	25	26	27	28	29	30	31	
MARYLAND SOUTHERN EASTERN SHORE 01																																	
ASSATEAGUE	SNOWFALL																																
PRINCESS ANNE	SNOWFALL																																
SALISBURY 2N	SNOWFALL	-	-	2.0	-	-	-	-	-	-	-	-	-	-	-	-	3.7	1.5	-	-	-	-	-	-	-	1.3	0.4	-	-	-	-	-	
SALISBURY FAA AP	SNOWFALL			2.0	T											2.0	3.0						T			4.0	T						
	SN ON GND			-												-	-																
SNOW HILL 4 N	SNOWFALL	-	-	2.0	-	-	-	-	-	-	-	-	-	-	-	-	3.0	-	-	-	-	-	-	-	-	1.0	6.0	-	-	-	-	-	
	SN ON GND	-	-	2	1											-	3									1	4	2					
CENTRAL EASTERN SHORE 02																																	
ROYAL OAK 2 SSW	SNOWFALL			4.0													5.5									0.1	2.0						
	SN ON GND			3	3	1	1										5	1	T							T	T						
LOWER SOUTHERN 03																																	
MECHANICSVILLE 5 NE	SNOWFALL			0.5	4.0												5.5	0.5									1.0						T
	SN ON GND	-	-	1	4	3	2	1	T	T	-	-	-	-	-	-	5	4	1	-	-	-	-	-	-	-	1	T	-	-	-	-	-
SOLOMONS	SNOWFALL	-	-	-	-	-	-	-	-	-	-	-	-	-	-	-	4.5	-	-	-	-	-	-	-	-	-	1.2	-	-	-	-	-	-
	SN ON GND	-	-	-	-	3	2	1	-	-	-	-	-	-	-	-	-	-	3	-	-	-	-	-	-	-	1	-	-	-	-	-	-
UPPER SOUTHERN 04																																	
BALTIMORE WASH INTL AP	SNOWFALL			3.8													4.9	3.2								0.2							T
	SN ON GND			2	4												7	5									T						
BELTSVILLE	SNOWFALL			1.0	2.0													7.0									2.0						0.5
	SN ON GND			1	3	1	T										7	5	1								2						
DALECARLIA RSVR	SNOWFALL			2.0	2.0													7.0									3.5						
	SN ON GND			2	2												7										4						
	WTR EQUIV			0.3	0.1												1.4										0.3						
LAUREL 3 W	SNOWFALL	-	-	-	-	-	-	-	-	-	-	-	-	-	-	-	-	-	-	-	-	-	-	-	-	1.5	-	-	-	-	-	-	
MARYLAND SCIENCE CENTER	SNOWFALL																																
NATL ARBORETUM DC	SNOWFALL	-	-	-	3.6												7.0	-									2.2	T					T
	SN ON GND	-	-	-	4	2	1	T	-	-	-	-	-	-	-	-	7	6	T								T						
	WTR EQUIV	-	-	-	-	-	-	-	-	-	-	-	-	-	-	-	-	-	-	-	-	-	-	-	-	-	-	-	-	-	-	-	-
OXON HILL	SNOWFALL			0.8	3.1													5.8	T								2.1	T					0.2
	SN ON GND			1	4	3	2	1									6	4	1								1						
UPPER MARLBORO 3 NNW	SNOWFALL	-	-	1.2	2.6													5.8	T	-	-	-	-	-	-	-	0.5	-	-	-	-	-	0.2
	SN ON GND	-	-	1	4	3	1	T	-	-	-	-	-	-	-	-	6	4	-	-	-	-	-	-	-	-	-	-	-	-	-	-	-
NORTHERN CENTRAL 06																																	
ABERDEEN PHILLIPS FLD	SNOWFALL				5.5													4.5	T								0.3	T					
	SN ON GND				4	2	T										4	3	T								T	T					
BRIGHTON DAM	SNOWFALL			1.0	3.0													8.0									3.0						
	SN ON GND			1	3												8										3						
	WTR EQUIV			1.0	3.0												8.0										3.0						

Snowfall: Includes snow and ice. Values for NWS stations (J index note) are Mid-Mid (LST).

Snow on ground: Includes snow, sleet, ice, and hail. Values for NWS stations (J index note) are observed at 12 UTC (GMT).

Water Equivalent: Given for NWS stations (J index note) only, when snow depth is 2 inches or more, and is measured at 18 UTC (GMT)

SNOWFALL AND SNOW ON GROUND (INCHES)

STATION		DAY OF MONTH																														
		01	02	03	04	05	06	07	08	09	10	11	12	13	14	15	16	17	18	19	20	21	22	23	24	25	26	27	28	29	30	31
CONOWINGO DAM	SNOWFALL	-	-	3.0	1.0	-	-	-	-	-	-	-	-	-	-	-	3.0	-	-	-	-	-	-	-	-	-	-	-	-	-	-	-
	SN ON GND	-	-	-	4	3	2	1	1	1	-	-	-	-	-	-	-	1	-	-	-	-	-	-	-	-	-	-	-	-	-	
CYLBURN	SNOWFALL	-	-	-	-	-	-	-	-	-	-	-	-	-	-	-	-	-	-	-	-	-	-	-	-	-	0.6	-	-	-	-	
	SN ON GND	-	-	-	3	3	2	-	-	-	-	-	-	-	-	-	-	5	-	-	-	-	-	-	-	-	1	-	-	-	-	
DAMASCUS 3 SSW	SNOWFALL			5.7												1.4	8.7						T			4.0				2.1		
	SN ON GND	T	T	5	4	3	2	1	T	T	T	T				1	8	2	T						4	1	T		1			
EMMITSBURG 2 SE	SNOWFALL			4.0	5.0												2.0	T								3.0				T		
	SN ON GND			4		5	4	3	2	1																1						
	WTR EQUIV																															
FREDERICK 2 NNE	SNOWFALL																															
MILLERS 4 NE	SNOWFALL			2.7												T	3.5									1.6	0.2			1.9	3.9	
	SN ON GND	3	3	5	5	4	4	4	3	2	T	T					1								1	T			2	T		
	WTR EQUIV	1.3	1.2	1.5	1.5	1.4	1.4	1.4	1.0	0.7							0.2									0.2				0.7		
SMITHSBURG 2NW	SNOWFALL																															
APPALACHIAN MOUNTAIN 07	SNOWFALL																															
CUMBERLAND 2	SNOWFALL	-	-	0.3	-	-	-	-	-	-	-	-	T	-	-	-	5.2	0.1	-	-	-	-	-	-	-	-	1.0	-	-	-	-	
	SN ON GND	-	-	-	-	-	-	-	-	-	-	-	-	-	-	-	5	3	-	-	-	-	-	-	-	-	1	-	-	-	-	
FROSTBURG 2	SNOWFALL			1.5									0.8				6.7	0.3			0.1	T				1.5			0.8	0.4		
	SN ON GND	5	5	7	7	6	6	4	4	2	2	1	T	1			7	5	3	T	T					2			1	1		
	WTR EQUIV	-	-	-	2.7	-	-	2.7	-	-	-	-	-	-	-	-	-	0.4	-	-	-	-	-	-	-	-	-	-	-	-		
SHARPSBURG 5 S	SNOWFALL	-	-	-	-	-	-	-	-	-	-	-	-	-	-	-	6.0	0.5	-	-	-	-	-	-	-	-	1.0	T	-	-	T	
	SN ON GND	-	-	-	-	-	-	T	T	-	-	-	-	-	-	-	6	3	-	-	-	-	-	-	-	1	-	-	-	-		
WILLIAMSPORT	SNOWFALL	-	-	1.8	-	-	-	-	-	-	-	-	-	-	-	-	2.0															
	SN ON GND	-	-	2	-	-	-	-	-	-	-	-	-	-	-	-																
	WTR EQUIV	-	-	1.8	1.7	-	-	-	-	-	-	-	-	-	-	-																
ALLEGHENY PLATEAU 08	SNOWFALL																															
OAKLAND 1 SE	SNOWFALL			3.0									1.1				3.5									2.0	4.5			3.0		
	SN ON GND	6	4	5	4	2	2	1					1	1			3	1								2	5			3	1	
SAVAGE RIVER DAM	SNOWFALL	-	-	T	T	-	-	-	-	-	-	-	-	-	-	-	-	T	-	-	-	-	-	-	-	-	T	T	-	-	-	
	SN ON GND	6	6	7	7	6	6	6	5	4	4							4	4							T						
SINES DEEP CREEK	SNOWFALL	-	-	4.0	-	-	-	-	-	-	-	-	1.4	0.1	-	-	7.5	-	-	-	-	-	-	-	-	T	1.0	2.0	-	-	1.2	3.0
	SN ON GND	-	-	5	5	4	-	5	-	2	-	-	2	1	-	-	7	6	-	-	-	-	-	-	-	-	-	2	-	-	1	3
DELAWARE NORTHERN 01	SNOWFALL																															
WILMINGTON NEW CASTLE CO AP	SNOWFALL			4.5												T	2.5									0.7						
	SN ON GND			1	4	3	T										2	2								1						
	WTR EQUIV	-	-	0.3	0.3	0.3	-	-	-	-	-	-	-	-	-	-	0.2	-	-	-	-	-	-	-	-	-	-	-	-	-	-	
WILMINGTON PORTER RES	SNOWFALL			1.7													2.5															
	SN ON GND			2	-												3	-	-	-	-	-	-	-	-	-	-	-	-	-	-	

Snowfall: Includes snow and ice. Values for NWS stations (J index note) are Mid-Mid (LST).

Snow on ground: Includes snow, sleet, ice, and hail. Values for NWS stations (J index note) are observed at 12 UTC (GMT).

Water Equivalent: Given for NWS stations (J index note) only, when snow depth is 2 inches or more, and is measured at 18 UTC (GMT)

SNOWFALL AND SNOW ON GROUND (INCHES)

STATION		DAY OF MONTH																																
		01	02	03	04	05	06	07	08	09	10	11	12	13	14	15	16	17	18	19	20	21	22	23	24	25	26	27	28	29	30	31		
SOUTHERN 02 DOVER	SNOWFALL	-	-	4.5	-	-	-	-	-	-	-	-	-	-	-	-	-	5.0	-	-	-	-	-	-	-	-	-	-	-	-	-	-	-	-
	SN ON GND	-	-	4	4	2	1	-	-	-	-	-	-	-	-	-	-	-	-	-	-	-	-	-	-	-	-	2.5	-	-	-	-	-	-

Snowfall: Includes snow and ice. Values for NWS stations (J index note) are Mid-Mid (LST).

Snow on ground: Includes snow, sleet, ice, and hail. Values for NWS stations (J index note) are observed at 12 UTC (GMT).

Water Equivalent: Given for NWS stations (J index note) only, when snow depth is 2 inches or more, and is measured at 18 UTC (GMT)

PAN EVAPORATION AND WIND

STATION		DAY OF MONTH																															TOTAL OR AVERAGE			
		01	02	03	04	05	06	07	08	09	10	11	12	13	14	15	16	17	18	19	20	21	22	23	24	25	26	27	28	29	30	31				
MARYLAND UPPER SOUTHERN 04 BELTSVILLE	WIND	-	-	-	-	-	-	-	-	-	-	-	-	-	-	-	-	-	-	-	-	-	-	-	-	-	-	-	-	-	-	-	-	-	M	
	EVAP	-	-	-	-	-	-	-	-	-	-	-	-	-	-	-	-	-	-	-	-	-	-	-	-	-	-	-	-	-	-	-	-	-	M	
	MAX	-	-	-	-	-	-	-	-	-	-	-	-	-	-	-	-	-	-	-	-	-	-	-	-	-	-	-	-	-	-	-	-	-	M	
	MIN	-	-	-	-	-	-	-	-	-	-	-	-	-	-	-	-	-	-	-	-	-	-	-	-	-	-	-	-	-	-	-	-	-	-	M
UPPER MARLBORO 3 NNW	WIND	-	-	-	-	-	-	-	-	-	-	-	-	-	-	-	-	-	-	-	-	-	-	-	-	-	-	-	-	-	-	-	-	-	M	
	EVAP	-	-	-	-	-	-	-	-	-	-	-	-	-	-	-	-	-	-	-	-	-	-	-	-	-	-	-	-	-	-	-	-	-	M	
	MAX	-	-	-	-	-	-	-	-	-	-	-	-	-	-	-	-	-	-	-	-	-	-	-	-	-	-	-	-	-	-	-	-	-	-	M
	MIN	-	-	-	-	-	-	-	-	-	-	-	-	-	-	-	-	-	-	-	-	-	-	-	-	-	-	-	-	-	-	-	-	-	-	M
ALLEGHENY PLATEAU 08 SAVAGE RIVER DAM	WIND	-	-	-	-	-	-	-	-	-	-	-	-	-	-	-	-	-	-	-	-	-	-	-	-	-	-	-	-	-	-	-	-	-	M	
	EVAP	-	-	-	-	-	-	-	-	-	-	-	-	-	-	-	-	-	-	-	-	-	-	-	-	-	-	-	-	-	-	-	-	-	M	
	MAX	-	-	-	-	-	-	-	-	-	-	-	-	-	-	-	-	-	-	-	-	-	-	-	-	-	-	-	-	-	-	-	-	-	-	M
	MIN	-	-	-	-	-	-	-	-	-	-	-	-	-	-	-	-	-	-	-	-	-	-	-	-	-	-	-	-	-	-	-	-	-	-	M

Evaporation: Is measured in hundreths of inches.

Wind: Is measured in miles.

Max and Min: The maximum and minimum temperatures (Fahrenheit) of the water in the evaporation pan.

STATION INDEX

STATION	INDEX NO.	DIVISION	COUNTY	LATITUDE	LONGITUDE	ELEVATION (IN FEET)	OBSERVATION TIME AND TABLES			
							LOCAL STD TIME			
							TEMP	PRECIP	EVAP	SPECIAL SEE (NOTES)
MARYLAND										
ABERDEEN PHILLIPS FLD	0015	06	HARFORD	39 28	76 10W	57	07	07		CH
ASSATEAGUE	0335	01	WORCESTER	38 4	75 13W	10	VAR	VAR		H
BALTIMORE WASH INTL AP R	0465	04	ANNE ARUNDEL	39 10	76 41W	156	24	24		HJ
BELTSVILLE	0700	04	PRINCE GEORGE'S	39 2	76 56W	145	08	08	08	CH
BRIGHTON DAM	1125	06	MONTGOMERY	39 11	77 0W	330	08	08		H
CONOWINGO DAM	2060	06	HARFORD	39 39	76 11W	40	07	07		H
CUMBERLAND 2	2282	07	ALLEGANY	39 39	78 45W	730	18	18		H
CYLBURN	2308	06	BALTIMORE	39 21	76 39W	235	08	08		H
DALECARLIA RSVR	2325	04	DISTRICT OF COLUMBIA	38 56	77 7W	150	08	08		H
DAMASCUS 3 SSW	2336	06	MONTGOMERY	39 16	77 14W	700	22	22		H
EMMITSBURG 2 SE	2906	06	FREDERICK	39 41	77 17W	403	07	07		H
FREDERICK 2 NNE	3353	06	FREDERICK	39 26	77 24W	280	07	07		H
FROSTBURG 2	3415	07	ALLEGANY	39 40	78 56W	2170	07	07		H
LAUREL 3 W	5111	04	PRINCE GEORGE'S	39 5	76 54W	400	24	24		H
MARYLAND SCIENCE CENTER R	5718	04	BALTIMORE (CITY)	39 17	76 37W	20	24	24		H
MECHANICSVILLE 5 NE	5865	03	ST. MARY'S	38 28	76 42W	100	07	07		H
MILLERS 4 NE	5934	06	CARROLL	39 43	76 48W	860	18	18		CH
NATL ARBORETUM DC	6350	04	DISTRICT OF COLUMBIA	38 55	76 58W	50	07	07		H
OAKLAND 1 SE	6620	08	GARRETT	39 25	79 24W	2420	07	07		H
OXON HILL	6800	04	PRINCE GEORGE'S	38 47	76 60W	120	08	08		H
PRINCESS ANNE	7330	01	SOMERSET	38 13	75 41W	20	17	17		H
ROYAL OAK 2 SSW	7806	02	TALBOT	38 43	76 11W	10	17	17		H
SALISBURY 2N	8004	01	WICOMICO	38 24	75 36W	20	17	17		H
SALISBURY FAA AP	8005	01	WICOMICO	38 20	75 31W	48	24	24		H
SAVAGE RIVER DAM	8065	08	GARRETT	39 31	79 8W	1495	08	08	08	CH
SHARPSBURG 5 S	8207	07	WASHINGTON	39 24	77 43W	500	07	07		H
SINES DEEP CREEK	8315	08	GARRETT	39 31	79 25W	2040	07	07		H
SMITHSBURG 2NW	8371	06	WASHINGTON	39 40	77 35W	670	08	08		H
SNOW HILL 4 N	8380	01	WORCESTER	38 14	75 23W	30	17	17		H
SOLOMONS	8405	03	CALVERT	38 19	76 27W	12	08	08		H
UPPER MARLBORO 3 NNW	9070	04	PRINCE GEORGE'S	38 51	76 46W	130	08	08	08	H
WILLIAMSPORT	9570	07	WASHINGTON	39 37	77 51W	360	06	06		H
DELAWARE										
DOVER	2730	02	KENT	39 15	75 31W	30	16	16		H
WILMINGTON NEW CASTLE CO AP R	9595	01	NEW CASTLE	39 40	75 36W	79	24	24		HJ
WILMINGTON PORTER RES	9605	01	NEW CASTLE	39 46	75 32W	270	24	24		H

REFERENCE NOTES

STATION NAMES: Name of the city, town or locality. Figures and letters following the station names indicate the distance in miles and direction from the post office or town community center.

DIVISIONS: Areas within a state of similar climatological characteristics. Division averages are calculated using data from stations that record temperature and/or precipitation. Station Precipitation totals flagged with an 'F' or 'M' are excluded from the Divisional Average calculations of precipitation. Stations with monthly Temperature averages flagged with an 'F' or 'M' are included in the Divisional Average if there are no more than 9 flagged or missing daily values in the month, else they are excluded from the divisional average for temperature.

NORMALS: The average value of the meteorological element over a time period. Effective 1 January 2012, the averaging period is 1981 to 2010. The normals for National Weather Service localities have been adjusted so as to be representative for the current observation site.

MONTHLY DEGREE DAY TOTALS: One heating (cooling) degree day is accumulated for each whole degree that the daily mean temperature is below (above) 65 degrees Fahrenheit.

PRECIPITATION: Values shown in hundredths of inches are water equivalent totals, i.e., total of liquid and melted frozen precipitation. In the "Monthly Summarized Data" table the total snow and sleet values shown in tenths of inches are unmelted amounts. The max depth on ground values of snow and sleet shown in whole inches are cumulative unmelted amounts. The number of days with .10, .50, 1.00 or more refers to water equivalents.

PRECIPITATION QUALITY CONTROL: The NCDC quality control process may flag precipitation data that are spatially inconsistent, exceed climatological limits, or are inconsistent with prevailing weather patterns.

TEMPERATURE: Original temperature values are given in the "Daily Temperature" table. Summary temperature information (averages, departures, extremes, monthly degree day totals) is based on the values labeled MAX/MIN.

WIND: (As shown in the "Evaporation and Wind" table) the total wind movement in miles over the evaporation pan as determined by an anemometer recorder located 6-8 inches above the pan.

SYMBOLS AND LETTERS USED IN THE STATION INDEX TABLE

- C Station is equipped with recording rain gage (R) but values in this bulletin are from a non-recording rain gage unless indicated by an R.
- G Observations appear in the "Soil Temperatures" table.
- H Observations appear in the "Snowfall and Snow on the Ground" table.
- J Station also published as a Local Climatological Data publication.
- VAR Observation time varies.
- SR Observation time near sunrise.
- SS Observation time near sunset.

SYMBOLS AND LETTERS USED IN THE DATA TABLES

- (DAILY DATA ARE FOR THE 24 HOURS IMMEDIATELY PRECEDING OBSERVATION TIME.)
- BLANK Entries in the "Monthly Summarized Data" table indicate no record.
- BLANK Entries in the "Daily Precipitation" and "Snowfall and Snow on the Ground" tables indicate zero.
- BLANK Entries in the "Daily Temperature" table indicate a missing record

- No record. Data not recorded or not received in time for publication.
- + Precipitation or temperature extremes occurred on one or more previous dates during the month.
- * Rain gage not read. Precipitation is included in the amount following the asterisks. Time distribution may not be known. A * preceding the monthly total indicates precipitation amount is being carried forward to next month's total, and may include amounts from the previous month(s).
- a As a subscript, indicates accumulated total.

by NCDC's Climate Prediction Branch and its entries for the report. If the data is not in the report, please contact the office for more information. For stations that have been discontinued, the terminate date of last reading. (Hawaii stations)

- B Divisional Departure from normals are computed using 1971-2000 normals.
- E Normalized HDD/CDD Calculation. E is appended to the HDD/CDD Calculation when 1-9 individual daily TMAX and/or TMIN values are missing and a Normalized HDD/CDD Calculation is provided. M appears alone if 10 or more daily values are missing.
- F Monthly calculation flagged value. F is appended to average and/or total values computed which exclude one or more daily data values that have been flagged by the GHCN-Daily Dataset
- M Insufficient or partial data. M is appended to average and/or total values computed with 1-9 daily values missing. M appears alone if 10 or more daily values are missing, (8 or more for wind and evaporation).
- N Indicates snow fall or Snowdepth totals are computed with one or more missing days.
- R Amounts from recording rain gage.
- T Trace. An amount too small to measure.

SEASONAL TABLES: Monthly and seasonal snowfall and heating degree days for the 12 months ending with the June data are published in the July issue of this bulletin. Cooling degree days for the calendar year are published in the "Climatological Data Annual Summary."

Information concerning the history of changes in locations, exposure, etc. of substations is kept on file at the National Climatic Data Center. Historical information of regular National Weather Service Offices may be obtained from the "Local Climatological Data" annual publication. The contents of this publication may be reprinted or otherwise used freely, with proper credit to the National Climatic Data Center. The data are also available digitally.

Effective with the January 2011 Data-Month, COOP Observer Names are no longer included in the Monthly and Annual Climatological Data Publications. This information is not published to ensure the privacy of personal information pursuant to Section 208 of the E-Government Act of 2002 (44 USC 3601).

As of the 2011 Data-Year, Station and Climate Division Maps are no longer being included in the CD Publications. NCDC's Product Development Branch provides updated Station Maps for various data networks via the Historical Observing Metadata Repository: <http://www.ncdc.noaa.gov/homr>.

The GHCN-Daily Quality Control Flags shown below are displayed as superscripts with the data. For more Information on Global Historical Climatology Network - Daily and flags, see: <http://www.ncdc.noaa.gov/oa/climate/ghcn-daily/> and Comprehensive Automated Quality Assurance of Daily Surface Observations. Durre, Imke, Matthew J. Menne, Byron E. Gleason, Tamara G. Houston, Russell S. Vose, 2010: J. Appl. Meteor. Climatol., 49, 16151633. doi: 10.1175/2010JAMC2375.1

- | | |
|---|---|
| Blank = Passed All checks | N = failed naught check |
| D = failed duplicate check | O = failed climatological outlier check |
| G = failed gap check | R = failed lagged range check |
| I = failed internal consistency check | S = failed spatial consistency check |
| K = failed streak/frequent-value check | T = failed temporal consistency check |
| L = failed check on length of multiday period | W = temperature too warm for snow |
| M = failed megaconsistency check | X = failed bounds check |
| | Z = flagged as a result of an official Datzilla investigation |

Beginning with the January 2013 CD Publication, monthly mean temperature calculations have changed to the National Data Stewardship Team standard. Monthly maximum and minimum temperatures are not rounded until after the monthly mean temperature is calculated. This is the most accurate outcome, but may be slightly different from the mean derived from rounded monthly maximum and minimum.

Processing Updates and Errata: The CD Publications are periodically reproduced to include the addition of late reports and reported corrections. The GHCND data version noted on the cover of the publication provides the generation date.

The climate division temperature and precipitation values in this publication are based on simple averages from the current set of NWS-Designated Open and Published COOP and First Order Sites within each division. These values differ from those found in NCDC's nClimDiv product. Beginning in February 2014, the nClimDiv product is used

These and other publications are available from the National Climatic Data Center

Hourly Precipitation Data

This publication contains hourly precipitation amounts obtained from recording rain gages located at National Weather Service, Federal Aviation Administration, and cooperative observer stations. Published data are displayed in inches and tenths or inches and hundredths at local standard time. HPD includes maximum precipitation for nine (9) time periods from 15 minutes to 24 hours, for selected stations.

Climatological Data

Monthly editions contain station daily maximum and minimum temperatures and precipitation. Some Stations provide daily snowfall, snow depth, evaporation, and soil temperature data. Each edition also contains monthly summaries for heating and cooling degree days (65 degree F base). The July issue contains a recap of monthly heating degree days and snow data for the preceding July through June.

The Annual issue contains monthly and annual averages of temperature, precipitation, temperature extremes, freeze data, soil temperatures, evaporation, and a recap of monthly cooling degree days.

Storm Data

Monthly issues contain a chronological listing, by states, of occurrences of storms and unusual weather phenomena. Reports contain information on storm paths, deaths, injuries, and property damage. An "Outstanding storms of the month" section highlights severe weather events with photographs, illustrations, and narratives. The December issue includes annual tornado, lightning, flash flood, and tropical cyclone summaries.

Monthly Climatic Data for the World

This publication contains monthly means for temperature, pressure, precipitation, vapor pressure, and sunshine for approximately 2,000 surface data collection stations worldwide and monthly mean upper air temperatures, dew point depressions, and wind velocities for approximately 500 observing sites.

Local Climatological Data

LCD publications summarize temperature, relative humidity, precipitation, cloudiness, wind speed and direction observations for several hundred cities in the U.S. and its territories. Each monthly publication also contains 3 hourly weather observations for that month and a hourly summary of precipitation. Annual LCD publications contain a summary of the past calendar year as well as historical averages and extremes.

For Information Call:

(828) 271-4800 Option 2

(828) 271-4010 (TDD)

(828) 271-4876 (Fax)

NOAA\National Climatic Data Center
Attn: User Engagement & Services Branch
151 Patton Avenue
Asheville, NC 28801-5001

Customer Services Number: (828) 271-4800, option 2
TDD : (828) 271-4010
Fax number: (828) 271-4876

NCDC now offers free online access to the *Climatological Data* publication.
Go to : www.ncdc.noaa.gov and choose Most Popular.