



CLIMATOLOGICAL DATA

MARYLAND AND DELAWARE

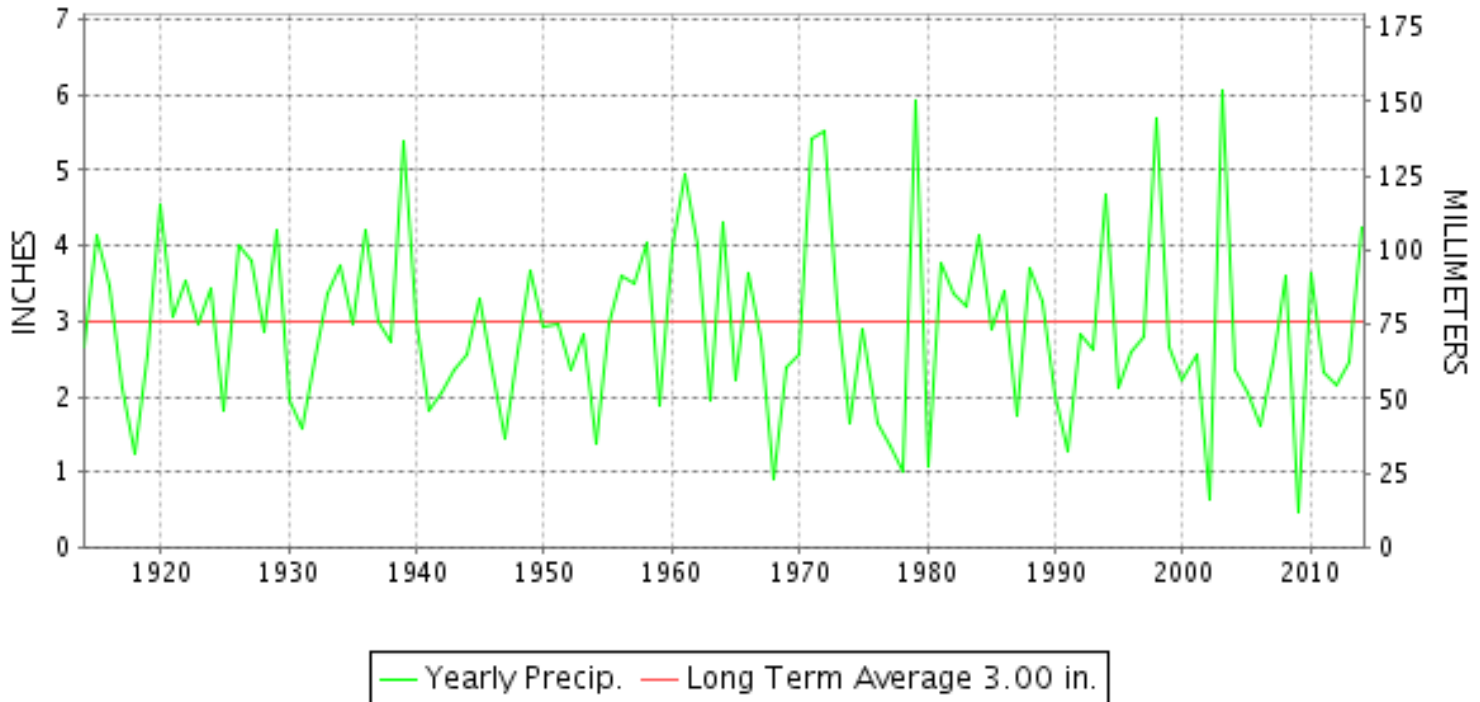
FEBRUARY 2014

VOLUME 118 NUMBER 02

ISSN 0145-0549

GHCND Ver: 3.12-upd-2014060505

FEBRUARY PRECIPITATION BY YEAR



TEMPERATURE AND PRECIPITATION EXTREMES

MARYLAND

HIGHEST TEMPERATURE	72	FEBRUARY 21	SALISBURY FAA AP
LOWEST TEMPERATURE	-12	FEBRUARY 28	OAKLAND 1 SE
GREATEST TOTAL PRECIPITATION	6.82		DALECRLIA RSVR
LEAST TOTAL PRECIPITATION	1.85		SALISBURY FAA AP
GREATEST 1 DAY PRECIPITATION	2.09	FEBRUARY 13	DAMASCUS 3 SSW
GREATEST TOTAL SNOWFALL	50.6		SINES DEEP CREEK
GREATEST DEPTH OF SNOW OR ICE	28		SAVAGE RIVER DAM

"I certify that this is an official publication of the National Oceanic and Atmospheric Administration (NOAA) It is compiled using information from weather observing sites supervised by NOAA/National Weather Service and received at the National Climatic Data Center(NCDC), Asheville, North Carolina 28801."

Director
National Climatic Data Center

noaa

National
Oceanic and
Atmospheric Administration

National
Environmental Satellite, Data
and Information Service

National
Climatic Data Center
Asheville, North Carolina

DELAWARE

HIGHEST TEMPERATURE	68
LOWEST TEMPERATURE	7
GREATEST TOTAL PRECIPITATION	5.35
LEAST TOTAL PRECIPITATION	4.92
GREATEST 1 DAY PRECIPITATION	1.57
GREATEST TOTAL SNOWFALL	19.0
GREATEST DEPTH OF SNOW OR ICE	10

FEBRUARY 21
FEBRUARY 28

FEBRUARY 13

DOVER
WILMINGTON PORTER RES
WILMINGTON NEW CASTLE CO AP
DOVER
DOVER
WILMINGTON NEW CASTLE CO AP
WILMINGTON NEW CASTLE CO AP

MONTHLY STATION AND DIVISION SUMMARY

STATION	TEMPERATURE (°F)														PRECIPITATION (IN)										
	AVERAGE MAXIMUM	AVERAGE MINIMUM	AVERAGE	DEPARTURE FROM NORMAL	HIGHEST	DATE	LOWEST	DATE	HEATING DEG. DAYS	COOLING DEG. DAYS	NO. OF DAYS				TOTAL	DEPARTURE FROM NORMAL	GREATEST 24 HOURS	DATE	ICE PELLETS, SNOW			NO. OF DAYS			
											MAX		MIN						TOTAL	MAX DEPTH ON GROUND	DATE	.10 OR MORE	.50 OR MORE	1.00 OR MORE	
											>=90	<=32	<=32	<=0											
MARYLAND SOUTHERN EASTERN SHORE 01	M	M	M							0	0	0	0	M				0.0							
ASSATEAGUE	47.8M	29.2M	38.5M	0.0	71	21	16	28	735E	0	0	0	11	0	M 1.73	-1.18	0.83	12	0.0				4	1	0
PRINCESS ANNE	47.8MF	25.8M	36.8MF		70	21	7	27+	777E	0	0	1	22	0	3.89		1.27	13	M 0.4				8	2	1
SALISBURY 2N	47.1	28.4	37.8	0.1	72	21	14	28	755	0	0	1	19	0	1.85	-1.50	0.72	13	T	0			4	2	0
SALISBURY FAA AP	48.6	26.0F	37.3F	-2.2	68	19	13	28	756	0	0	0	21	0	3.28	0.14	1.60	13	M T				5	2	1
SNOW HILL 4 N			37.6	-0.2B											3.01	-0.41B									
--DIVISIONAL DATA----->																									
CENTRAL EASTERN SHORE 02																									
ROYAL OAK 2 SSW	44.8	26.2	35.5	-3.4	65	21	13	28	819	0	0	2	24	0	4.27	1.14	1.20	03	5.9	T	27	10	3	2	
--DIVISIONAL DATA----->			35.5	-1.4B											4.27	0.96B									
LOWER SOUTHERN 03																									
MECHANICSVILLE 5 NE	44.2	24.8	34.5	-2.4	71	22	13	28	849	0	0	3	26	0	4.04	0.96	1.10	13	M 7.6	M 4	13	10	3	1	
SOLOMONS	41.8M	27.3M	34.5M	-4.8	67	24	15	28	847E	0	0	1	17	0	MA 3.73		1.23	13	M 3.4	2	13	5	1	1	
--DIVISIONAL DATA----->			34.5	-2.4B											4.04	1.02B									
UPPER SOUTHERN 04																									
BALTIMORE WASH INTL AP	41.7	24.1	32.9	-2.9	63	21	11	28	892	0	0	6	27	0	4.58	1.68	1.77	13	14.2	9	13	5	3	2	
BELTSVILLE	42.7	24.3	33.5	-2.2	68	22	11	28	878	0	0	3	27	0	3.86	1.26	0.88	03	14.2	9	13	6	3	0	
DALECARLIA RSVR	43.5	24.8	34.1	-3.7	68	22	13	28	858	0	0	2	26	0	6.82	3.79	2.08	07	F 12.4	10	13	12	3	3	
LAUREL 3 W	42.6	25.8	34.2	-2.1	67	22+	8	28	858	0	0	5	23	0	4.77	1.74	2.00	13	M 1.5				5	3	2
MARYLAND SCIENCE CENTER	42.0	28.5	35.2	-3.4	62	22	13	28	826	0	0	4	20	0	4.12	1.52	1.43	13	M 0.0				5	3	2
NATL ARBORETUM DC	44.3M	25.0M	34.6M	-3.8	70	22	12	28	841E	0	0	0	20	0	MA 4.20	1.30	0.54	04	M 6.8	M 6	16	4	1	0	
OXON HILL	44.9	25.6	35.2	-2.7	68	22	12	28	827	0	0	2	24	0	4.51	1.58	1.20	13	13.2	9	14	8	4	1	
UPPER MARLBORO 3 NNW	44.6	23.2	33.9	-2.3	69	22	10	28	866	0	0	2	27	0	4.17	1.45	1.09	13	M 12.1	M 8	14	6	4	2	
--DIVISIONAL DATA----->			34.2	-2.1B											4.69	1.77B									
NORTHERN CENTRAL 06																									
ABERDEEN PHILLIPS FLD	40.4	23.9	32.1	-3.5	59	22	9	28	914	0	0	5	27	0	A 4.66	1.78	0.83	05	M 5.4	9	14	6	3	0	
BRIGHTON DAM	40.4M	22.0M	31.2M		58	23	8	28+	939E	0	0	7	27	0	4.72		1.80	13	19.0	15	13	10	3	1	
CONOWINGO DAM	37.4	20.9	29.2	-5.5	56	23	8	13	998	0	0	9	28	0	3.77	0.92	1.02	05	M 21.0	6	16	11	1	1	
CYLBURN	40.8	24.4	32.6	-3.1	59	23	8	28	901	0	0	4	23	0	MA 5.41		0.95	05	M 17.8	11	14	3	1	0	
DAMASCUS 3 SSW	37.9	23.8	30.9	-3.4	56	02	5	28	946	0	0	13	24	0	5.21	2.04	2.09	13	28.3	18	13	7	3	2	
EMMITSBURG 2 SE	39.5	20.1	29.8	-2.6	55	23+	1	13	979	0	0	9	27	0	3.48	0.78	1.25	14	FM 19.0	13	14	10	2	1	
FREDERICK 2 NNE	M	M	M												M										
MILLERS 4 NE	37.5	20.7	29.1	-4.1	56	02	1	12	999	0	0	11	24	0	6.17	2.98	1.59	05	0.0						
SMITHSBURG 2NW	M	M	M												M										
--DIVISIONAL DATA----->			30.7	-3.3B											4.67	1.75B									

DAILY PRECIPITATION (INCHES)

STATION	TOTAL	DAY OF MONTH																															
		01	02	03	04	05	06	07	08	09	10	11	12	13	14	15	16	17	18	19	20	21	22	23	24	25	26	27	28	29	30	31	
MARYLAND																																	
SOUTHERN																																	
EASTERN SHORE 01																																	
ASSATEAGUE	M	-	-	-	-	-	-	-	-	-	-	-	-	-	-	-	-	-	-	-	-	-	-	-	-	-	-	-	-	-	-	-	
PRINCESS ANNE	M 1.73	-	-	0.40								0.83					0.07					0.22	-	-		0.09	0.12						
SALISBURY 2N	3.89			0.94	0.02	0.40						T	1.27	0.15	0.20	0.02			0.23	0.01		0.47	0.15			0.01	0.02						
SALISBURY FAA AP	1.85	T	T	0.55	0.04	0.22				T		0.04	0.72	0.01	0.05	T			0.08	T		0.14				T	T						
SNOW HILL 4 N	3.28		0.07	0.61		0.47							1.60	0.05	0.05	0.01			0.26	T		0.16				T	T						
CENTRAL																																	
EASTERN SHORE 02																																	
ROYAL OAK 2 SSW	4.27			1.20		0.38			T		T		1.08	0.30	0.15				0.20	0.20		0.52			T	0.12	0.12						
LOWER SOUTHERN 03																																	
MECHANICSVILLE 5 NE	4.04			0.35	0.81	0.22	0.05			T	T		1.10	0.63	0.01	0.20	T	0.11	0.01	0.11		0.24					0.12	0.08					
SOLOMONS	MA 3.73	*	*	1.05 _a		0.34				-	-		1.23	0.45	*	*	0.15 _a	0.26	0.02	0.15	0.01	0.01	-	-			0.05	0.02					
UPPER SOUTHERN 04																																	
BALTIMORE WASH INTL AP	4.58			1.34	0.03	0.57			T	0.05		0.09	1.77		0.06	T		0.09	0.11		0.36		T	0.01	0.06	0.04							
BELTSVILLE	3.86			0.88	0.44	0.38	0.05				0.03		0.85	0.74	0.03	0.02		0.06		0.09	0.20		0.20			0.08	0.01						
DALECARLIA RSVR	6.82			1.02	0.45	0.37	0.24	2.08					1.08	0.43	0.40	0.02		0.06		0.10		0.19				T	0.18	0.20					
LAUREL 3 W	4.77			1.44	0.02	0.64				0.01		0.24	2.00						0.24		0.08					0.05	0.05						
MARYLAND SCIENCE CENTER	4.12			1.22	0.03	0.77				0.04		0.06	1.43		0.02			0.09	0.22		0.12				0.02	0.03	0.07						
NATL ARBORETUM DC	MA 4.20	*	*	0.98 _a	0.54	0.38	0.06				0.02		*	1.78 _a	0.02	0.06		0.06	T	0.10	T	0.20	*	T _a	T	-							
OXON HILL	4.51			0.75	0.91	0.20	0.23			T	0.01		1.20	0.68	0.05	0.08		0.03	0.14		0.14	0.03		T		0.12	0.08						
UPPER MARLBORO 3 NNW	4.17			1.08	0.51	0.33	0.01				T		1.09	0.80		0.06		0.05		0.09		0.02				0.12	0.01						
NORTHERN CENTRAL 06																																	
ABERDEEN PHILLIPS FLD	A 4.66			0.54	0.74	0.83	0.15			T	0.07		*	1.72 _a		0.02	T	0.09		0.23		0.24			0.01		0.01	0.01					
BRIGHTON DAM	4.72			0.93	0.25	0.50	0.05				0.18		1.80	0.20	0.03			0.15	0.03	0.15		0.30				0.15							
CONOWINGO DAM	3.77	0.15		0.28	0.20	1.02	0.39				0.15		0.46	0.39		0.25					0.22	0.26											
CYLBURN	MA 5.41			*	1.38 _a	0.95	-				0.02		*	2.68 _a	T			0.10	T	0.18		-					0.07	0.03					
DAMASCUS 3 SSW	5.21			1.28	T	0.89			T	0.08		0.07	2.09	T	0.11	T		0.19	0.17		0.17		T	0.02	0.07	0.07							
EMMITSBURG 2 SE	3.48			0.07	0.80	0.25	T		0.11	T	0.10	0.08	0.10	1.25	T		T	0.10		0.25		0.27			T		0.10	T					
FREDERICK 2 NNE	M	-	-	-	-	-	-	-	-	-	-	-	-	-	-	-	-	-	-	-	-	-	-	-	-	-	-	-	-	-	-	-	
MILLERS 4 NE	6.17			1.41		1.59				0.07	0.02		1.57	0.84	0.07	T		0.18	0.19		0.04			0.16	0.02	0.01							
SMITHSBURG 2NW	M	-	-	-	-	-	-	-	-	-	-	-	-	-	-	-	-	-	-	-	-	-	-	-	-	-	-	-	-	-	-	-	
APPALACHIAN																																	
MOUNTAIN 07																																	
CUMBERLAND 2	3.53			0.72	0.20	0.95	0.02				0.21		0.46	0.39	0.29	T	0.03	0.11	0.05	0.02		0.08			T		T						
FROSTBURG 2	3.68			0.72	0.07	0.91	0.07	T		T	0.17		0.41	0.49	0.40	0.01	0.04	0.15	0.07	0.08				0.03		0.06			T				
SHARPSBURG 5 S	M	-	-	-	-	-	-	-	-	-	-	-	-	-	-	-	-	-	-	-	-	-	-	-	-	-	-	-	-	-	-	-	
WILLIAMSPORT	MA 4.00	-	-	0.55	0.67	0.95	0.24				0.08		*	0.51 _a	0.42			0.08	0.13		0.18		0.19										
ALLEGHENY PLATEAU 08																																	
OAKLAND 1 SE	4.88			1.07	0.15	0.15	0.27	0.02	0.50		0.31	0.02	0.04	0.70	0.33	0.19	0.14	0.15	0.01		0.17			0.41	0.03	0.19	0.03						
SAVAGE RIVER DAM	4.70			0.84	0.23	1.17	0.24				0.16		0.52	0.39	0.88		T	0.10	0.09	0.08		T		T		T							

DAILY PRECIPITATION (INCHES)

STATION	TOTAL	DAY OF MONTH																														
		01	02	03	04	05	06	07	08	09	10	11	12	13	14	15	16	17	18	19	20	21	22	23	24	25	26	27	28	29	30	31
SINES DEEP CREEK	4.92			0.85	0.20	0.95	0.30	0.02		0.03	0.25	0.02		0.29	0.34	0.35	0.06	0.09	0.11	0.17	0.17	0.02	0.20		0.30	0.01	0.14	0.04	0.01			
DELAWARE NORTHERN 01																																
WILMINGTON NEW CASTLE CO AP	5.35			1.22	0.03	1.31			0.01	0.12			0.08	1.50	0.20	0.10			0.18	0.40		0.13			0.01	0.01	0.05	T				
WILMINGTON PORTER RES	5.26			0.88		1.38				0.18			0.05	1.30	0.20	0.08			0.20	0.70		0.15			T	T	0.14	T				
DELAWARE SOUTHERN 02																																
DOVER	A 4.92			*	*	1.99 _a				T				1.57		0.19			0.28	0.19	T	0.59	0.01				0.05	0.05				

DAILY TEMPERATURES (°F)

STATION	OB. TIME	MAX/MIN	DAY OF MONTH																															AVERAGE		
			01	02	03	04	05	06	07	08	09	10	11	12	13	14	15	16	17	18	19	20	21	22	23	24	25	26	27	28	29	30	31			
MARYLAND SOUTHERN EASTERN SHORE 01 ASSATEAGUE	VA	MAX MIN																																		M M
PRINCESS ANNE	17	MAX MIN			46 38	43 33	42 35	40 28	44 25		36 27	42 23	40 19	45 35	53 33			39 26	68 34	68 33	65 32	71 41			48 35	44 27	37 25	44 19	40 16					M M		
SALISBURY 2N	17	MAX MIN	53 11	61 11	55 37	55 31	50 32	39 26	42 22	37 26	37 21	34 27	32 17	60 ^S 44	52 35	49 32	40 25	37 24	55 27		61 31	70 43	60 34	65 40	58 34	43 26	35 7	42 7	37 12					M M		
SALISBURY FAA AP	24	MAX MIN	54 23	63 38	46 35	40 33	42 36	38 29	44 24	35 25	39 23	36 22	33 19	39 35	53 33	50 32	41 27	39 26	57 31	67 32	56 31	72 40	61 32	67 36	49 33	38 25	38 23	44 17	32 14					M M		
SNOW HILL 4 N	17	MAX MIN	52 18	64 35	56 38	38 31	47 34	40 22	44 20	38 24	36 19	35 21	34 16	44 15	54 30	53 29	41 24	39 21	57 25	68 30	65 28	65 47	60 31	67 53 ^S	63 37	45 24	38 21	44 15	41 13					M M		
CENTRAL EASTERN SHORE 02 ROYAL OAK 2 SSW	17	MAX MIN	53 21	59 30	51 33	37 28	37 29	41 26	40 21	37 23	34 18	30 25	30 20	37 14	50 28	49 30	38 26	34 24	54 23	60 28	56 28	65 40	58 31	62 40	56 34	42 27	36 25	40 17	34 13					M M		
LOWER SOUTHERN 03 MECHANICSVILLE 5 NE	07	MAX MIN	42 14	49 24	63 29	38 28	38 27	38 27	35 23	42 23	32 21	34 26	32 17	33 15	35 29	52 30	35 24	39 23	33 23	57 26	64 30	53 34	71 31	62 32	67 37	48 26	35 25	36 19	43 13					M M		
SOLOMONS	08	MAX MIN			44 34	38 29	39 29	34 29	33 27			34 25	38 21	39 18	40 19			31 25	34 26	51 29	64 32	56 38			67 32	46 33	35 28	35 25	42 15					M M		
UPPER SOUTHERN 04 BALTIMORE WASH INTL AP	24	MAX MIN	48 25	57 28	46 31	35 25	41 30	35 26	42 22	32 22	31 20	30 19	30 14	27 15	37 24	46 30	36 27	36 21	34 19	51 26	57 27	52 28	63 32	61 27	60 43	44 25	35 23	36 20	38 14	27 11					M M	
BELTSVILLE	08	MAX MIN	50 25	50 26	60 30	37 26	35 27	41 27	35 24	41 22	32 23	33 15	29 15	33 16	36 32	48 30	36 24	35 21	53 21	57 28	53 30	68 28	61 29	60 35	60 25	42 25	35 16	34 11	37 11					M M		
DALECARLIA RSVR	08	MAX MIN	39 22	51 26	51 29	60 27	36 27	36 23	35 22	41 23	33 23	33 17	30 17	33 17	36 28	51 28	35 24	36 21	35 21	55 29	62 29	55 34	68 29	62 29	59 35	43 27	43 27	34 18	35 13					M M		
LAUREL 3 W	24	MAX MIN	49 29	52 36	60 29	35 24	40 28	38 24	40 27	38 24	30 22	28 20	30 16	29 11	33 22	48 30	37 27	36 22	33 19	52 26	58 30	54 34	67 38	67 37	61 44	44 32	36 26	34 22	37 16	27 8					M M	
MARYLAND SCIENCE CENTER	24	MAX MIN	47 31	52 33	46 32	36 27	42 31	35 27	43 29	33 28	31 27	33 24	30 21	28 17	38 25	49 34	39 29	36 25	35 23	52 28	55 34	53 35	60 40	62 36	58 43	44 33	37 30	36 24	38 19	27 13					M M	
NATL ARBORETUM DC	07	MAX MIN				39 28	38 29	43 29	37 24	42 28	34 23	35 25	33 19	33 16		43 17	54 17	39 26	38 23	38 23	57 30	56 30	70 37			64 37	46 28		38 17	38 12					M M	
OXON HILL	08	MAX MIN	49 22	52 27	63 35	40 27	38 27	40 27	35 27	40 27	36 22	34 25	32 20	33 16	28 15	40 23	53 31	36 25	38 22	36 22	59 27	60 33	56 34	68 30	64 30	64 36	47 29	37 27	37 19	41 12					M M	
UPPER MARLBORO 3 NNW	08	MAX MIN	50 22	50 22	63 29	38 26	37 26	40 27	35 21	44 21	34 19	34 24	31 15	32 12	33 12	36 32	54 30	36 23	40 22	38 21	55 25	60 28	55 28	69 27	62 27	64 36	45 26	37 24	36 14	40 10					M M	
NORTHERN CENTRAL 06 ABERDEEN PHILLIPS FLD	07	MAX MIN	43 23	48 27	50 29	37 25	36 25	40 25	34 22	40 22	29 24	30 21	29 16	32 12	37 12	47 31	37 24	35 19	33 19	49 27	50 27	46 31	59 32	56 32	56 35	42 26	36 26	35 16	35 9					M M		

DAILY TEMPERATURES (°F)

STATION	OB. TIME	MAX/MIN	DAY OF MONTH																															AVERAGE			
			01	02	03	04	05	06	07	08	09	10	11	12	13	14	15	16	17	18	19	20	21	22	23	24	25	26	27	28	29	30	31				
BRIGHTON DAM	08	MAX	45	48	56	35	33	38	32	38	30	30	28	27		35	47	35	34	31	49	57	51	56	58	54	42	34	32	35						40.4	
		MIN	24	27	31	23	24	25	20	23	20	20	11	8		12	29	21	17	22	27	26	32	26	30	31	22	23	11	8						22.0	
CONOWINGO DAM	07	MAX	40	44	42	35	32	36	30	36	27	28	27	26	30	34	44	34	31	38	47	45	48	53	56	48	38	34	33	32						37.4	
		MIN	22	22	26	22	22	23	20	19	19	18	12	10	8	28	27	22	18	18	26	27	27	26	27	30	21	24	11	10						20.9	
CYLBURN	08	MAX	46	47	53	34	33	39	39	40	30	29	28	28	34	35	46	36	34	33	49	55	50	58	59	55	50	35	33	35						40.8	
		MIN	26	28	33	23	23	24	23	24	20	20	13	10	11	32	33	22	19	25	29	30	30	34	39	37	25	25	16	8						24.4	
DAMASCUS 3 SSW	22	MAX	46	56	44	31	35	30	36	29	29	27	26	25	32	45	37	31	29	49	53	50	55	55	51	41	32	31	33	24						37.9	
		MIN	30	35	29	23	28	23	23	22	20	18	10	7	19	28	25	20	14	24	32	32	38	36	41	28	23	19	15	5						23.8	
EMMITSBURG 2 SE	07	MAX	41	49	55	40	32	40	32	36	32	29	30	30	26	34	45	37	33	32	50	54	51	50	55	49	41	37	32	33						39.5	
		MIN	20	23	26	25	16	27	20	21	21	18	7	2	1	19	31	20	15	13	22	24	23	35	32	29	26	23	16	7						20.1	
FREDERICK 2 NNE	07	MAX																																			M
		MIN																																			M
MILLERS 4 NE	18	MAX	47	56	48	29	36	36	33	29	26	26	25	25	33	42	36	30	29	47	51	50	52	55	50	43	33	30	29	23						37.5	
		MIN	28	33	29	14	24	20	17	17	15	13	6	1	18	27	30	18	11	22	28	25	36	33	35	28	19	20	9	3						20.7	
SMITHSBURG 2NW	08	MAX																																			M
		MIN																																			M
APPALACHIAN MOUNTAIN 07																																					
CUMBERLAND 2	18	MAX	48	52	47	38	32	40	34	35	33	31	30	32	31	34	45	34	32	36	53	56	52	54	59	58	39	36	33	32						40.6	
		MIN	18	31	31	23	24	23	23	18	18	20	5	2	3	21	33	20	12	13	27	30	30	30	29	26	26	24	14	5						20.7	
FROSTBURG 2	07	MAX	39	48	44	33	27	36	26	26	26	27	20	23	18	29	37	28	25	33	43	50	48	49	49	47	30	26	21	21						33.2	
		MIN	27	31	27	15	16	16	15	10	12	12	3	-1	-1	17	27	12	3	2	31	25	28	28	28	18	17	16	6	-7						15.5	
SHARPSBURG 5 S	07	MAX																																			M
		MIN																																			M
WILLIAMSPORT	06	MAX		47	53	39	34	38	32	35	30	32	27		26	35	43	35	32	31	50	54	50	51	57	54	38		30	32						39.4	
		MIN		25	33	25	23	27	22	23	20	22	16		7	19	29	20	16	15	25	27	26	36	33	31	27		14	6						22.7	
ALLEGHENY PLATEAU 08																																					
OAKLAND 1 SE	07	MAX	40	53	65	39	39	43	43	23	27	37	26	25	30	29	39	27	24	35	45	50	58	58	58	50	28	24	22	22						37.8	
		MIN	18	26	28	17	17	16	15	4	9	13	-4	-6	-6	19	27	14	3	2	23	19	22	22	21	18	17	15	8	-12						13.0	
SAVAGE RIVER DAM	08	MAX	41	44	42	36	31	37	27	27	30	30	24	26	20	32	39	31	28	37	45	50	47	48	50	51	31	29	25	25						35.1	
		MIN	24	27	30	21	22	20	20	11	12	18	1	-5	-5	17	27	16	4	5	22	25	25	26	26	23	22	20	6	-2						16.4	
SINES DEEP CREEK	07	MAX	39	50	42	32	32	38	24	23	28	32	18	21	22	30	37	30	25	36	44	49	44	44	49	47	27	24	20	22						33.2	
		MIN	20	25	28	21	21	16	16	5	6	14	-4	-8	-8	19	26	9	3	1	21	22	23	24	22	17	15	17	4	-10						13.0	
DELAWARE NORTHERN 01																																					
WILMINGTON NEW CASTLE CO AP	24	MAX	46	52	44	36	40	32	39	29	30	28	26	27	37	44	37	30	32	46	49	49	66	59	59	41	36	34	37	27						39.7	
		MIN	27	27	29	22	32	24	23	23	19	18	12	11	24	30	28	21	17	27	26	27	30	28	35	27	22	17	13	8						23.1	
WILMINGTON PORTER RES	24	MAX	45	52	44	33	36	31	34	27	27	26	24	25	34	42	42	42	43	48	48	60	54	55	38	33	30	32	22							38.2	
		MIN	30	30	29	20	30	22	20	21	21	18	14	10	22	29	27	19	15	15	15	16	34	37	32	27	24	17	13	7							21.9
SOUTHERN 02																																					
DOVER	16	MAX	45	59	44	36	37	39	41	35	33	30	29	29	38	47	44	34	33	51	58	53	68	58	64	44	42	36	38	31						42.7	

MARYLAND AND DELAWARE
201402

DAILY TEMPERATURES (°F)

STATION	OB. TIME	MAX/MIN	DAY OF MONTH																															AVERAGE		
			01	02	03	04	05	06	07	08	09	10	11	12	13	14	15	16	17	18	19	20	21	22	23	24	25	26	27	28	29	30	31			
		MIN	20	37	32	26	32	23	20	24	17	17	16	14	25	32	30	25	17	23	30	27	39	35	44	36	24	22	13	10						25.4

SNOWFALL AND SNOW ON GROUND (INCHES)

STATION		DAY OF MONTH																														
		01	02	03	04	05	06	07	08	09	10	11	12	13	14	15	16	17	18	19	20	21	22	23	24	25	26	27	28	29	30	31
MARYLAND SOUTHERN EASTERN SHORE 01 ASSATEAGUE PRINCESS ANNE SALISBURY 2N SALISBURY FAA AP	SNOWFALL																															
	SNOWFALL					T						T							0.4	T						T						
	SNOWFALL									T		T	T	T					T							T	T					
	SN ON GND																															
SNOW HILL 4 N CENTRAL EASTERN SHORE 02 ROYAL OAK 2 SSW	SNOWFALL													T	T											T	T					
	SN ON GND	T	T	T	T					T	T		1.5	1.1	0.3				1.0							1.0	1.0					
LOWER SOUTHERN 03 MECHANICSVILLE 5 NE	SNOWFALL												4.0	0.4		T	T	0.5									1.4	1.3				
	SN ON GND	T	T	T									4	3	2	1	1	1	T	T	T						T	T	T			
SOLOMONS	SNOWFALL												2.4					0.4									0.6					
	SN ON GND												2	1																		
UPPER SOUTHERN 04 BALTIMORE WASH INTL AP BELTSVILLE DALECARLIA RSVR	SNOWFALL									T	0.6		1.9	9.6		T	T		0.9							0.6	0.6					
	SN ON GND										1			9	8	5	2	2	3	2												
	SNOWFALL										0.5			9.0	3.0				0.5								1.2	T				
	SN ON GND										1			9	7	6	6	5	5	4	2						1	1				
LAUREL 3 W MARYLAND SCIENCE CENTER NATL ARBORETUM DC	SNOWFALL												10.0	1.4		T			0.5 ¹							1.0	T					
	SN ON GND												10	9					2 ¹							1						
	WTR EQUIV													9.0					0.5							1.0						
	SNOWFALL									1.0																	0.5					
OXON HILL UPPER MARLBORO 3 NNW	SNOWFALL																															
	SN ON GND																															
	SNOWFALL																															
	SN ON GND																															
NORTHERN CENTRAL 06 ABERDEEN PHILLIPS FLD BRIGHTON DAM	SNOWFALL					T				T	0.3			4.5		0.1	T	0.5									T	T				
	SN ON GND					T				T	1	T		8	9	5	4	3	3	2	T						T	T				
	SNOWFALL										1.5			15.0					1.0								1.5					
	SN ON GND										1			15					1								1					
CONOWINGO DAM	SNOWFALL	2.0			3.0								1.5					1.5														
	WTR EQUIV												1.5						1.5								1.5					
	SNOWFALL	2.0			3.0								8.5	4.0																		

Snowfall: Includes snow and ice. Values for NWS stations (J index note) are Mid-Mid (LST).

Snow on ground: Includes snow, sleet, ice, and hail. Values for NWS stations (J index note) are observed at 12 UTC (GMT).

Water Equivalent: Given for NWS stations (J index note) only, when snow depth is 2 inches or more, and is measured at 18 UTC (GMT).

SNOWFALL AND SNOW ON GROUND (INCHES)

STATION		DAY OF MONTH																															
		01	02	03	04	05	06	07	08	09	10	11	12	13	14	15	16	17	18	19	20	21	22	23	24	25	26	27	28	29	30	31	
CYLBURN	SN ON GND	-	2	-	-	3	2	1	1	1	-	2	2	-	-	6	6	5	2	2	1	1	-	1	-	-	-	-	-	-	-	-	-
	SNOWFALL														15.0	T			1.3												0.5	1.0	-
DAMASCUS 3 SSW	SN ON GND	2	1	-	-	-	-	-	-	-	-	-	-	-	11	9	-	-	8	7	5	3	1	-	-	-	-	-	-	-	-	-	
	SNOWFALL			0.6					T	0.7		1.4	20.2	T	1.1	T		1.7							T	1.2	1.4						
EMMITSBURG 2 SE	SN ON GND	1	T	T	T	T	T	T	T	1	T	T	1	18	14	14	14	14	13	9	6	3	T	T	T	T	T	T	T	T	T		
	SNOWFALL				4.5						1.0		10.0		1.0				2.0											0.5			
FREDERICK 2 NNE MILLERS 4 NE	SN ON GND									1		10	13																		1		
	SNOWFALL									1.0						12.0																	
SMITHSBURG 2NW APPALACHIAN MOUNTAIN 07	SN ON GND	1	T	6	6	4	4	4	4	5	5	5	5	19	18	17	16	16	15	12	10	8	6	5	4	4	4	4	4	4	4		
	SNOWFALL	0.4		0.8	0.8	1.3	1.1	1.1	1.1	1.1	1.1	1.0	1.0	2.3	3.1	3.2	3.1	3.0	2.9	3.1	2.9	2.4	1.9	1.7	1.4	1.4	1.4	1.4	1.4	1.4	1.4		
CUMBERLAND 2	SN ON GND	-	-	3.0	2.0	0.4	T	-	-	-	2.4	-	-	4.8	7.2	1.8	T	1.0	1.0	-	-	-	-	-	-	-	-	T	-	-	-		
	SNOWFALL																																
FROSTBURG 2	SN ON GND	2	1	3	4	4	4	4	3	3	5	5	4	9	15	12	9	10	10	6	4	3	1	-	-	-	-	-	-	-	-		
	SNOWFALL			5.2	1.3	1.3	1.4	0.4		0.1	3.7			4.7	12.2	5.0	1.2	2.7	1.5						0.3		0.9		T				
SHARPSBURG 5 S WILLIAMSPORT	SN ON GND	5	3	7	8	10	10	10	9	9	12	12	11	15	26	26	23	25	23	21	14	11	9	7	6	6	7	6	6	6			
	SNOWFALL																																
ALLEGHENY PLATEAU 08	SN ON GND	-	-	-	1.4	-	-	1.9	-	-	-	1.7	-	-	3.2	-	-	-	3.8	-	-	2.9	-	-	-	1.8	-	-	-	-			
	SNOWFALL																																
OAKLAND 1 SE	SN ON GND	-	-	-	1.4	-	-	1.9	-	-	-	1.7	-	-	3.2	-	-	-	3.8	-	-	2.9	-	-	-	1.8	-	-	-	-			
	SNOWFALL						1.6	1.4	0.8	0.8																							
SAVAGE RIVER DAM	SN ON GND	6	2		1	1	2	2	2	2	5	5	5	9	25	26	27	27	27	16	9	5	4	3	3	3	4	7	7	7	7		
	SNOWFALL			3.0	-	2.0	-	-	-	-	3.0	-	-	6.0	14.0	3.0	-	T	1.0	-	-	-	-	-	-	-	-	T	T	-	-		
SINES DEEP CREEK	SN ON GND	4	3	6	5	6	6	-	-	-	9	9	9	16	27	27	-	-	28	22	19	15	12	8	8	8	8	8	8	8			
	SNOWFALL			6.8	2.0	2.0	2.0	0.5	-	0.2	4.8	0.1	-	3.5	7.8	6.5	3.8	2.6	1.0	-	-	-	-	-	1.5	T	3.5	2.0	T				
WILMINGTON NEW CASTLE CO AP	SN ON GND	5	-	12	9	8	7	9	10	9	14	15	13	16	21	25	25	25	20	16	14	-	-	-	4	-	7	-	-	-			
	SNOWFALL																																
WILMINGTON PORTER RES	SN ON GND	3	3	T	1	T					2	2	1	10	10	7	7	6	6	6	5	3											
	SNOWFALL																																
DOVER	SN ON GND	0.7	-	-	-	-	-	-	-	-	0.2	0.2	-	1.3	1.3	1.0	1.1	1.0	1.2	1.2	1.1	-	-	-	-	-	-	-	-	-			
	SNOWFALL			3.1	-	-	-	-	-	2.2	-	-	0.5	8.0	1.1	0.8	-	-	1.0	-	-	-	-	-	-	-	T	1.3	T	-	-		
DOVER	SN ON GND	1		3	2	1	T	-	-	-	-	-	1	9	-	-	-	-	-	-	-	-	-	-	-	T	-	T	-	-			
	SNOWFALL																																

Snowfall: Includes snow and ice. Values for NWS stations (J index note) are Mid-Mid (LST).

Snow on ground: Includes snow, sleet, ice, and hail. Values for NWS stations (J index note) are observed at 12 UTC (GMT).

Water Equivalent: Given for NWS stations (J index note) only, when snow depth is 2 inches or more, and is measured at 18 UTC (GMT)

PAN EVAPORATION AND WIND

STATION		DAY OF MONTH																															TOTAL OR AVERAGE
		01	02	03	04	05	06	07	08	09	10	11	12	13	14	15	16	17	18	19	20	21	22	23	24	25	26	27	28	29	30	31	
MARYLAND UPPER SOUTHERN 04 BELTSVILLE	WIND	-	-	-	-	-	-	-	-	-	-	-	-	-	-	-	-	-	-	-	-	-	-	-	-	-	-	-	-	-	-	-	M
	EVAP	-	-	-	-	-	-	-	-	-	-	-	-	-	-	-	-	-	-	-	-	-	-	-	-	-	-	-	-	-	-	-	M
	MAX	-	-	-	-	-	-	-	-	-	-	-	-	-	-	-	-	-	-	-	-	-	-	-	-	-	-	-	-	-	-	-	M
	MIN	-	-	-	-	-	-	-	-	-	-	-	-	-	-	-	-	-	-	-	-	-	-	-	-	-	-	-	-	-	-	-	-
UPPER MARLBORO 3 NNW	WIND	-	-	-	-	-	-	-	-	-	-	-	-	-	-	-	-	-	-	-	-	-	-	-	-	-	-	-	-	-	-	M	
	EVAP	-	-	-	-	-	-	-	-	-	-	-	-	-	-	-	-	-	-	-	-	-	-	-	-	-	-	-	-	-	-	-	M
	MAX	-	-	-	-	-	-	-	-	-	-	-	-	-	-	-	-	-	-	-	-	-	-	-	-	-	-	-	-	-	-	-	M
	MIN	-	-	-	-	-	-	-	-	-	-	-	-	-	-	-	-	-	-	-	-	-	-	-	-	-	-	-	-	-	-	-	M
ALLEGHENY PLATEAU 08 SAVAGE RIVER DAM	WIND	-	-	-	-	-	-	-	-	-	-	-	-	-	-	-	-	-	-	-	-	-	-	-	-	-	-	-	-	-	-	M	
	EVAP	-	-	-	-	-	-	-	-	-	-	-	-	-	-	-	-	-	-	-	-	-	-	-	-	-	-	-	-	-	-	-	M
	MAX	-	-	-	-	-	-	-	-	-	-	-	-	-	-	-	-	-	-	-	-	-	-	-	-	-	-	-	-	-	-	-	-
	MIN	-	-	-	-	-	-	-	-	-	-	-	-	-	-	-	-	-	-	-	-	-	-	-	-	-	-	-	-	-	-	-	M

Evaporation: Is measured in hundreths of inches.

Wind: Is measured in miles.

Max and Min: The maximum and minimum temperatures (Fahrenheit) of the water in the evaporation pan.

STATION INDEX

STATION	INDEX NO.	DIVISION	COUNTY	LATITUDE	LONGITUDE	ELEVATION (IN FEET)	OBSERVATION TIME AND TABLES			
							LOCAL STD TIME			
							TEMP	PRECIP	EVAP	SPECIAL SEE (NOTES)
MARYLAND										
ABERDEEN PHILLIPS FLD	0015	06	HARFORD	39 28	76 10W	57	07	07		CH
ASSATEAGUE	0335	01	WORCESTER	38 4	75 13W	10	VAR	VAR		H
BALTIMORE WASH INTL AP R	0465	04	ANNE ARUNDEL	39 10	76 41W	156	24	24		HJ
BELTSVILLE	0700	04	PRINCE GEORGE'S	39 2	76 56W	145	08	08	08	CH
BRIGHTON DAM	1125	06	MONTGOMERY	39 11	77 0W	330	08	08		H
CONOWINGO DAM	2060	06	HARFORD	39 39	76 11W	40	07	07		H
CUMBERLAND 2	2282	07	ALLEGANY	39 39	78 45W	730	18	18		H
CYLBURN	2308	06	BALTIMORE	39 21	76 39W	235	08	08		H
DALECARLIA RSVR	2325	04	DISTRICT OF COLUMBIA	38 56	77 7W	150	08	08		H
DAMASCUS 3 SSW	2336	06	MONTGOMERY	39 16	77 14W	700	22	22		H
EMMITSBURG 2 SE	2906	06	FREDERICK	39 41	77 17W	403	07	07		H
FREDERICK 2 NNE	3353	06	FREDERICK	39 26	77 24W	280	07	07		H
FROSTBURG 2	3415	07	ALLEGANY	39 40	78 56W	2170	07	07		H
LAUREL 3 W	5111	04	PRINCE GEORGE'S	39 5	76 54W	400	24	24		H
MARYLAND SCIENCE CENTER R	5718	04	BALTIMORE (CITY)	39 17	76 37W	20	24	24		H
MECHANICSVILLE 5 NE	5865	03	ST. MARY'S	38 28	76 42W	100	07	07		H
MILLERS 4 NE	5934	06	CARROLL	39 43	76 48W	860	18	18		CH
NATL ARBORETUM DC	6350	04	DISTRICT OF COLUMBIA	38 55	76 58W	50	07	07		H
OAKLAND 1 SE	6620	08	GARRETT	39 25	79 24W	2420	07	07		H
OXON HILL	6800	04	PRINCE GEORGE'S	38 47	76 60W	120	08	08		H
PRINCESS ANNE	7330	01	SOMERSET	38 13	75 41W	20	17	17		H
ROYAL OAK 2 SSW	7806	02	TALBOT	38 43	76 11W	10	17	17		H
SALISBURY 2N	8004	01	WICOMICO	38 24	75 36W	20	17	17		H
SALISBURY FAA AP	8005	01	WICOMICO	38 20	75 31W	48	24	24		H
SAVAGE RIVER DAM	8065	08	GARRETT	39 31	79 8W	1495	08	08	08	CH
SHARPSBURG 5 S	8207	07	WASHINGTON	39 24	77 43W	500	07	07		H
SINES DEEP CREEK	8315	08	GARRETT	39 31	79 25W	2040	07	07		H
SMITHSBURG 2NW	8371	06	WASHINGTON	39 40	77 35W	670	08	08		H
SNOW HILL 4 N	8380	01	WORCESTER	38 14	75 23W	30	17	17		H
SOLOMONS	8405	03	CALVERT	38 19	76 27W	12	08	08		H
UPPER MARLBORO 3 NNW	9070	04	PRINCE GEORGE'S	38 51	76 46W	130	08	08	08	H
WILLIAMSPORT	9570	07	WASHINGTON	39 37	77 51W	360	06	06		H
DELAWARE										
DOVER	2730	02	KENT	39 15	75 31W	30	16	16		H
WILMINGTON NEW CASTLE CO AP R	9595	01	NEW CASTLE	39 40	75 36W	79	24	24		HJ
WILMINGTON PORTER RES	9605	01	NEW CASTLE	39 46	75 32W	270	24	24		H

REFERENCE NOTES

STATION NAMES: Name of the city, town or locality. Figures and letters following the station names indicate the distance in miles and direction from the post office or town community center.

DIVISIONS: Areas within a state of similar climatological characteristics. Division averages are calculated using data from stations that record temperature and/or precipitation. Station Precipitation totals flagged with an 'F' or 'M' are excluded from the Divisional Average calculations of precipitation. Stations with monthly Temperature averages flagged with an 'F' or 'M' are included in the Divisional Average if there are no more than 9 flagged or missing daily values in the month, else they are excluded from the divisional average for temperature.

NORMALS: The average value of the meteorological element over a time period. Effective 1 January 2012, the averaging period is 1981 to 2010. The normals for National Weather Service localities have been adjusted so as to be representative for the current observation site.

MONTHLY DEGREE DAY TOTALS: One heating (cooling) degree day is accumulated for each whole degree that the daily mean temperature is below (above) 65 degrees Fahrenheit.

PRECIPITATION: Values shown in hundredths of inches are water equivalent totals, i.e., total of liquid and melted frozen precipitation. In the "Monthly Summarized Data" table the total snow and sleet values shown in tenths of inches are unmelted amounts. The max depth on ground values of snow and sleet shown in whole inches are cumulative unmelted amounts. The number of days with .10, .50, 1.00 or more refers to water equivalents.

PRECIPITATION QUALITY CONTROL: The NCDC quality control process may flag precipitation data that are spatially inconsistent, exceed climatological limits, or are inconsistent with prevailing weather patterns.

TEMPERATURE: Original temperature values are given in the "Daily Temperature" table. Summary temperature information (averages, departures, extremes, monthly degree day totals) is based on the values labeled MAX/MIN.

WIND: (As shown in the "Evaporation and Wind" table) the total wind movement in miles over the evaporation pan as determined by an anemometer recorder located 6-8 inches above the pan.

SYMBOLS AND LETTERS USED IN THE STATION INDEX TABLE

- C Station is equipped with recording rain gage (R) but values in this bulletin are from a non-recording rain gage unless indicated by an R.
- G Observations appear in the "Soil Temperatures" table.
- H Observations appear in the "Snowfall and Snow on the Ground" table.
- J Station also published as a Local Climatological Data publication.
- VAR Observation time varies.
- SR Observation time near sunrise.
- SS Observation time near sunset.

SYMBOLS AND LETTERS USED IN THE DATA TABLES

(DAILY DATA ARE FOR THE 24 HOURS IMMEDIATELY PRECEDING OBSERVATION TIME.)

BLANK Entries in the "Monthly Summarized Data" table indicate no record.

BLANK Entries in the "Daily Precipitation" and "Snowfall and Snow on the Ground" tables indicate zero.

BLANK Entries in the "Daily Temperature" table indicate a missing record

- No record. Data not recorded or not received in time for publication.
- + Precipitation or temperature extremes occurred on one or more previous dates during the month.
- * Rain gage not read. Precipitation is included in the amount following the asterisks. Time distribution may not be known. A * preceding the monthly total indicates precipitation amount is being carried forward to next month's total, and may include amounts from the previous month(s).
- a As a subscript, indicates accumulated total.

by NCDC's Climate Prediction Branch and its entries for the report. If on the day in which the precipitation was recorded, the temperature was not recorded, the date of last reading. (Hawaii stations)

B Divisional Departure from normals are computed using 1971-2000 normals.

E Normalized HDD/CDD Calculation. E is appended to the HDD/CDD Calculation when 1-9 individual daily TMAX and/or TMIN values are missing and a Normalized HDD/CDD Calculation is provided. M appears alone if 10 or more daily values are missing.

F Monthly calculation flagged value. F is appended to average and/or total values computed which exclude one or more daily data values that have been flagged by the GHCN-Daily Dataset

M Insufficient or partial data. M is appended to average and/or total values computed with 1-9 daily values missing. M appears alone if 10 or more daily values are missing, (8 or more for wind and evaporation).

N Indicates snow fall or Snowdepth totals are computed with one or more missing days.

R Amounts from recording rain gage.

T Trace. An amount too small to measure.

SEASONAL TABLES: Monthly and seasonal snowfall and heating degree days for the 12 months ending with the June data are published in the July issue of this bulletin. Cooling degree days for the calendar year are published in the "Climatological Data Annual Summary."

Information concerning the history of changes in locations, exposure, etc. of substations is kept on file at the National Climatic Data Center. Historical information of regular National Weather Service Offices may be obtained from the "Local Climatological Data" annual publication. The contents of this publication may be reprinted or otherwise used freely, with proper credit to the National Climatic Data Center. The data are also available digitally.

Effective with the January 2011 Data-Month, COOP Observer Names are no longer included in the Monthly and Annual Climatological Data Publications. This information is not published to ensure the privacy of personal information pursuant to Section 208 of the E-Government Act of 2002 (44 USC 3601).

As of the 2011 Data-Year, Station and Climate Division Maps are no longer being included in the CD Publications. NCDC's Product Development Branch provides updated Station Maps for various data networks via the Historical Observing Metadata Repository: <http://www.ncdc.noaa.gov/homr>.

The GHCN-Daily Quality Control Flags shown below are displayed as superscripts with the data. For more Information on Global Historical Climatology Network - Daily and flags, see: <http://www.ncdc.noaa.gov/oa/climate/ghcn-daily/> and Comprehensive Automated Quality Assurance of Daily Surface Observations. Durre, Imke, Matthew J. Menne, Byron E. Gleason, Tamara G. Houston, Russell S. Vose, 2010: J. Appl. Meteor. Climatol., 49, 1615-1633. doi: 10.1175/2010JAMC2375.1

Blank = Passed All checks	N = failed naught check
D = failed duplicate check	O = failed climatological outlier check
G = failed gap check	R = failed lagged range check
I = failed internal consistency check	S = failed spatial consistency check
K = failed streak/frequent-value check	T = failed temporal consistency check
L = failed check on length of multiday period	W = temperature too warm for snow
M = failed megaconsistency check	X = failed bounds check
	Z = flagged as a result of an official Datzilla investigation

Beginning with the January 2013 CD Publication, monthly mean temperature calculations have changed to the National Data Stewardship Team standard. Monthly maximum and minimum temperatures are not rounded until after the monthly mean temperature is calculated. This is the most accurate outcome, but may be slightly different from the mean derived from rounded monthly maximum and minimum.

Processing Updates and Errata: The CD Publications are periodically reproduced to include the addition of late reports and reported corrections. The GHCND data version noted on the cover of the publication provides the generation date.

The climate division temperature and precipitation values in this publication are based on simple averages from the current set of NWS-Designated Open and Published COOP and First Order Sites within each division. These values differ from those found in NCDC's nClimDiv product. Beginning in February 2014, the nClimDiv product is used

NOAA\National Climatic Data Center
Attn: User Engagement & Services Branch
151 Patton Avenue
Asheville, NC 28801-5001

Customer Services Number: (828) 271-4800, option 2
TDD : (828) 271-4010
Fax number: (828) 271-4876

NCDC now offers free online access to the *Climatological Data* publication.
Go to : www.ncdc.noaa.gov and choose Most Popular.