



CLIMATOLOGICAL DATA

MARYLAND AND DELAWARE

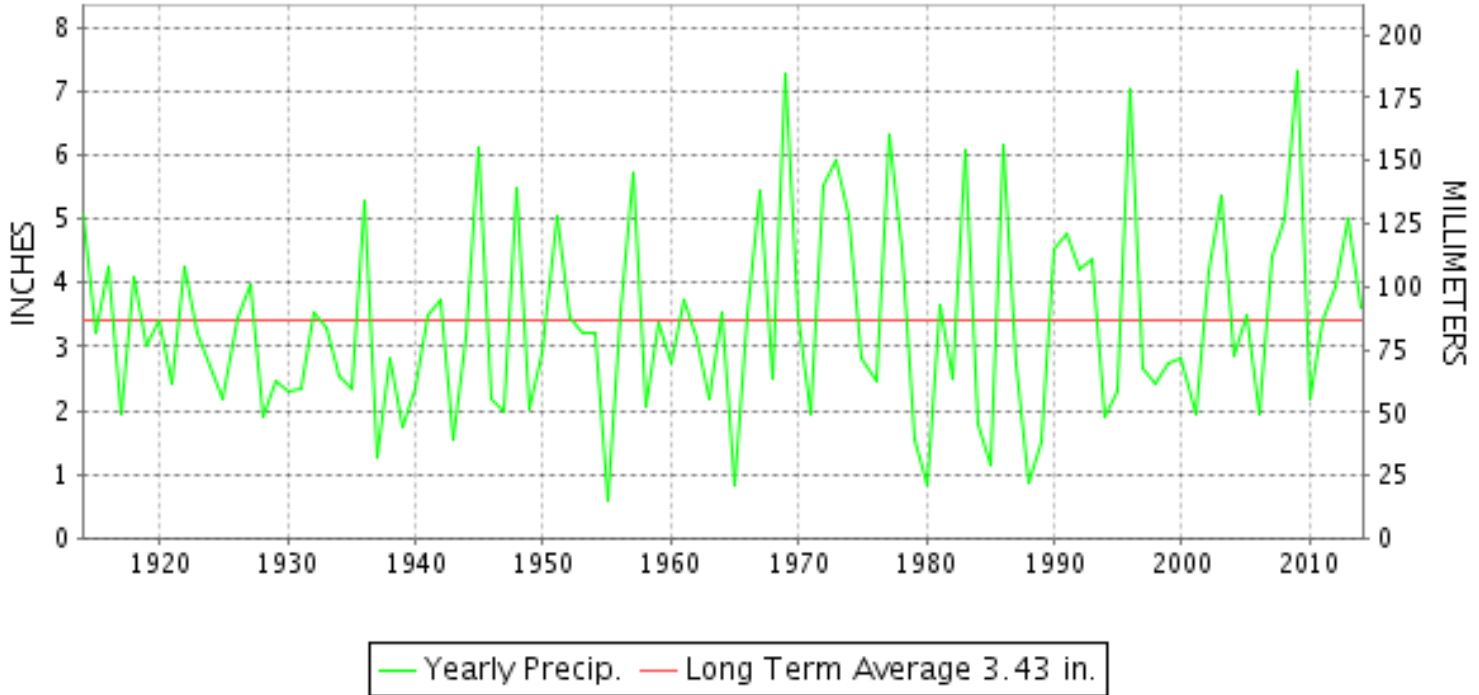
DECEMBER 2014

VOLUME 118 NUMBER 12

ISSN 0145-0549

GHCND Ver: 3.20-upd-2015041405

DECEMBER PRECIPITATION BY YEAR



TEMPERATURE AND PRECIPITATION EXTREMES

MARYLAND

HIGHEST TEMPERATURE	73	DECEMBER 02+	3 STATIONS
LOWEST TEMPERATURE	6	DECEMBER 31	OAKLAND 1 SE
GREATEST TOTAL PRECIPITATION	4.99		ROYAL OAK 2 SSW
LEAST TOTAL PRECIPITATION	1.92		CUMBERLAND 2
GREATEST 1 DAY PRECIPITATION	1.50	DECEMBER 24	SOLOMONS
GREATEST TOTAL SNOWFALL	8.0		SINES DEEP CREEK
GREATEST DEPTH OF SNOW OR ICE	1		2 STATIONS

"I certify that this is an official publication of the National Oceanic and Atmospheric Administration (NOAA) It is compiled using information from weather observing sites supervised by NOAA/National Weather Service and received at the National Climatic Data Center(NCDC), Asheville, North Carolina 28801."

Director
National Climatic Data Center

noaa

National
Oceanic and
Atmospheric Administration

National
Environmental Satellite, Data
and Information Service

National
Climatic Data Center
Asheville, North Carolina

DELAWARE

HIGHEST TEMPERATURE	69
LOWEST TEMPERATURE	20
GREATEST TOTAL PRECIPITATION	4.34
LEAST TOTAL PRECIPITATION	3.01
GREATEST 1 DAY PRECIPITATION	0.97
GREATEST TOTAL SNOWFALL	0.2
GREATEST DEPTH OF SNOW OR ICE	T

DECEMBER 01
DECEMBER 31+

DECEMBER 24

DOVER
2 STATIONS
DOVER
WILMINGTON NEW CASTLE CO AP
WILMINGTON PORTER RES
WILMINGTON NEW CASTLE CO AP
DOVER

MONTHLY STATION AND DIVISION SUMMARY

STATION	TEMPERATURE (°F)													PRECIPITATION (IN)											
	AVERAGE MAXIMUM	AVERAGE MINIMUM	AVERAGE	DEPARTURE FROM NORMAL	HIGHEST	DATE	LOWEST	DATE	HEATING DEG. DAYS	COOLING DEG. DAYS	NO. OF DAYS				TOTAL	DEPARTURE FROM NORMAL	GREATEST 24 HOURS	DATE	ICE PELLETS, SNOW			NO. OF DAYS			
											MAX		MIN						TOTAL	MAX DEPTH ON GROUND	DATE	.10 OR MORE	.50 OR MORE	1.00 OR MORE	
											>=90	<=32	<=32	<=0											
APPALACHIAN MOUNTAIN 07																									
CUMBERLAND 2	45.5	31.0	38.3	2.7	64	28	23	31	820	0	0	0	18	0	1.92	-0.93	0.50	24	M 0.3			6	1	0	
FROSTBURG 2	38.8	26.4	32.6	2.7	56	28+	15	31	996	0	0	7	26	0	2.42	-0.87	0.52	17+	M 0.6	M T	12	5	2	0	
SHARPSBURG 5 S	45.4	28.5	36.9	3.3	69	02	17	31	862	0	0	0	23	0	M				0.0						
WILLIAMSPORT	M	M	M		58	01	35	04	605E	0	0	0	0	0	M 2.41	-0.69	0.68	07	M 0.0	0		6	2	0	
--DIVISIONAL DATA----->																									
ALLEGHENY PLATEAU 08																									
OAKLAND 1 SE	41.4	25.9	33.7	3.9	61	25	6	31	963	0	0	5	26	0	3.91	0.06	0.66	07	1.2	1	11	13	2	0	
SAVAGE RIVER DAM	40.4	28.8	34.6	3.3	58	01	20	31	934	0	0	5	24	0	2.25	-0.55	0.51	07	M T	M T	19	7	1	0	
SINES DEEP CREEK	M	M	M		57	01	17	31+	964E	0	0	2	20	0	MA 4.77		0.71	17	M 8.0			5	1	0	
--DIVISIONAL DATA----->																									
DELAWARE NORTHERN 01																									
WILMINGTON NEW CASTLE CO AP	47.0	33.1	40.1	3.4	65	25+	20	31	765	0	0	0	13	0	3.01	-0.47	0.95	24	0.2	0		6	2	0	
WILMINGTON PORTER RES	45.8	32.1	38.9	2.7	63	26+	20	31	799	0	0	1	14	0	3.07	-1.03	0.97	24	0.0	0		8	2	0	
--DIVISIONAL DATA----->																									
SOUTHERN 02																									
DOVER	48.8	34.6	41.7	2.5	69	01	22	31	714	0	0	0	13	0	A 4.34	0.69	0.75	09	T	T	11	3	2	0	
--DIVISIONAL DATA----->																									

DAILY PRECIPITATION (INCHES)

STATION	TOTAL	DAY OF MONTH																															
		01	02	03	04	05	06	07	08	09	10	11	12	13	14	15	16	17	18	19	20	21	22	23	24	25	26	27	28	29	30	31	
MARYLAND																																	
SOUTHERN																																	
EASTERN SHORE 01																																	
ASSATEAGUE	M	-	-	-	-	-	-	-	-	-	-	-	-	-	-	-	-	-	-	-	-	-	-	-	-	-	-	-	-	-	-	-	
PRINCESS ANNE	M								0.80	0.03																							
SALISBURY 2N	4.05		0.10	0.01		0.05	0.20	0.50	0.02	1.40	0.02	0.01		0.01			0.29	0.02					0.07	0.03	1.00	0.15				0.15	0.02		
SALISBURY FAA AP	2.22	0.01	0.01	T	T	T	0.14	0.02	0.18	0.17	T				T	0.30							0.07	0.03	1.03	0.09			0.01	0.16	T		
SNOW HILL 4 N	4.19		0.02				0.27	0.42	0.03	0.91	0.02					0.02	0.28						0.05	0.57	1.28	0.12				0.20			
CENTRAL																																	
EASTERN SHORE 02																																	
ROYAL OAK 2 SSW	4.99		1.02	0.05	0.01	0.05	0.27	0.58		1.10	0.10	0.02				0.14	0.05						0.08	0.05	1.11	0.15			0.04	0.17	T		
LOWER SOUTHERN 03																																	
MECHANICSVILLE 5 NE	3.67		0.62	0.19	T	0.02	0.08	0.69		0.30	0.07		T				0.24						0.22	0.67	0.40				0.16	0.01			
SOLOMONS	A 3.35	0.00 _q	0.25	0.02		0.09	*	*	0.68 _a	0.15	0.05			*	*	0.00 _a	0.29				*	*	0.00 _a	0.12	1.50	*	0.18 _a	*	*	0.01 _a	0.01		
UPPER SOUTHERN 04																																	
BALTIMORE WASH INTL AP	3.58	0.07	0.55	0.03	T	0.01	0.52	T	0.01	0.73		0.02				0.34							0.22	0.08	0.85	0.08			0.04	0.03			
BELTSVILLE	3.39		0.29	0.44		T	0.01	0.55		0.41	0.10		T				0.46							0.26	0.47	0.35				0.05			
DALECARLIA RSVR	M 4.22		0.38	0.50		0.01	0.03	0.72		0.38	0.20						0.39							0.30	0.61	0.59		-		0.11			
LAUREL 3 W	3.87	0.10	0.70	0.04	0.01	0.04	0.56			0.55		0.02				0.52							0.26	0.07	0.78	0.12			0.05	0.05			
MARYLAND SCIENCE CENTER	3.33	0.16	0.37	0.01		0.02	0.48			0.60		0.02				0.36							0.18	0.11	0.87	0.08			0.06	0.01			
NATL ARBORETUM DC	3.44		0.39	0.61		T	0.02	0.07		0.26	0.21					0.39								0.27	0.62	0.47				0.13	T		
OXON HILL	3.99		0.48	0.51		0.02	0.03	0.53		0.20	0.20		T			0.40								0.27	0.54	0.61				0.20			
UPPER MARLBORO 3 NNW	4.15		0.27	0.43			0.01	0.47		0.31	0.16	0.90				0.35								0.20	0.48	0.42				0.15			
NORTHERN CENTRAL 06																																	
ABERDEEN PHILLIPS FLD	A 2.60		0.15	0.30	0.01		*	0.43 _a		0.20	0.05		T				0.26							0.12	0.44	*	*	*	0.64 _a				
BRIGHTON DAM	3.78		0.24	0.34			0.10	0.59		0.28	0.21						0.47							0.36	0.52	0.50			0.06	0.11			
CONOWINGO DAM	2.77	0.20	0.21			0.17	0.38			0.23						0.27							0.27	0.39	0.65								
CYLBURN	A 4.72	*	1.85 _a	0.23			0.05	*		0.66 _a	0.33		T											0.61	0.50	0.44				0.05			
DAMASCUS 3 SSW	3.74	0.09	0.53	0.02		0.10	0.58	T	T	0.62		T				0.41						T	0.26	0.17	0.87	0.06			0.02	0.01			
EMMITSBURG 2 SE	3.14		0.09	0.26	0.20		0.15	0.48		0.25	0.36		T				0.25							0.27	0.56	0.27				T			
FREDERICK 2 NNE	M	-	-	-	-	-	-	-	-	-	-	-	-	-	-	-	-	-	-	-	-	-	-	-	-	-	-	-	-	-	-		
MILLERS 4 NE	3.46	0.12	0.12	0.32		0.05	0.53	0.14	T	0.33	0.03	0.02	T			0.46	0.03						0.05	0.28	0.92	0.05			0.01	T			
SMITHSBURG 2NW	M	-	-	-	-	-	-	-	-	-	-	-	-	-	-	-	-	-	-	-	-	-	-	-	-	-	-	-	-	-	-		
APPALACHIAN																																	
MOUNTAIN 07																																	
CUMBERLAND 2	1.92		0.01	0.18		0.03	0.24	0.43		0.13						T	0.28							0.07	0.50	0.05							
FROSTBURG 2	2.42	T	0.04	0.29	T	0.04	0.42	0.52		0.09	T	0.01				T	0.52							0.09	0.37	0.02			0.01				
SHARPSBURG 5 S	M	-	-	-	-	-	-	-	-	-	-	-	-	-	-	-	-	-	-	-	-	-	-	-	-	-	-	-	-	-	-		
WILLIAMSPORT	M 2.41		0.13	0.31	0.05		0.24	0.68		-	-	0.07	-				0.08						-	-	0.56	0.29							
ALLEGHENY PLATEAU 08																																	
OAKLAND 1 SE	3.91	0.02	0.40	0.30		0.15	0.57	0.66		0.01	0.03	0.10	0.10			0.02	0.02	0.07	0.45	0.30				0.04	0.32	0.13			0.10	0.12			
SAVAGE RIVER DAM	2.25		0.15	0.25		0.04	0.40	0.51		0.17	T					T	0.33							T	0.40	T							

DAILY PRECIPITATION (INCHES)

STATION	TOTAL	DAY OF MONTH																													
		01	02	03	04	05	06	07	08	09	10	11	12	13	14	15	16	17	18	19	20	21	22	23	24	25	26	27	28	29	30
SINES DEEP CREEK	MA 4.77	0.75 _a	0.45	0.30		0.08	*	*	1.55 _a		0.10		*	*	0.05 _a	-	0.71	-		*	*	0.00 _a	0.03	0.27	*	0.30 _a	*	*	0.18 _a		
DELAWARE NORTHERN 01																															
WILMINGTON NEW CASTLE CO AP	3.01	0.14	0.39	0.05		0.04	0.74	0.01	T	0.34	T	0.03				0.10							0.05	0.07	0.95	0.04			0.06	T	
WILMINGTON PORTER RES	3.07	0.19	0.27	0.12			0.07	0.73	0.04	0.30	T	T				0.11							0.05	0.12	0.97	0.06			0.04		
SOUTHERN 02																															
DOVER	A 4.34		0.55	0.03		0.02	*	1.05 _a		0.75	0.01	0.02				0.08	0.11						0.03	0.03	*	*	*	*	*	1.66 _a	

DAILY TEMPERATURES (°F)

STATION	OB. TIME	MAX/MIN	DAY OF MONTH																															AVERAGE			
			01	02	03	04	05	06	07	08	09	10	11	12	13	14	15	16	17	18	19	20	21	22	23	24	25	26	27	28	29	30	31				
MARYLAND SOUTHERN EASTERN SHORE 01 ASSATEAGUE	VA	MAX MIN																																			M M M
PRINCESS ANNE	17	MAX MIN	71 46	68 40	57 42	59 30	51 41					48 36	51 44	50 42	48 35	46 33																				52.9	
SALISBURY 2N	17	MAX MIN	69 49	62 38	53 40	52 30	48 39	58 44	56 37	41 34	52 38	49 33	45 33	43 29	49 28	41 36	57 39	56 30	41 32	39 23	38 26	42 27	43 27	53 43	69 42	68 29	66 29	67 31	66 30	65 31	49 29	68 ^S 29		52.9			
SALISBURY FAA AP	24	MAX MIN	71 46	46 40	55 42	49 30	51 41	63 47	48 37	50 36	51 44	50 41	46 35	44 33	47 29	51 28	60 34	57 37	44 34	42 29	41 23	45 27	50 29	56 50	70 50	68 36	54 30	65 31	61 46	52 42	42 24	41 22		52.4			
SNOW HILL 4 N	17	MAX MIN	72 49	66 40	55 40	53 27	62 43	58 43	45 38	50 35	48 38	48 29	45 32	47 34	48 26	50 40	59 30	57 40	53 27	39 30	42 32	44 24	45 25	56 24	67 41	64 49	55 27	59 27	60 38	57 41	44 36	40 18		53.2			
CENTRAL EASTERN SHORE 02 ROYAL OAK 2 SSW	17	MAX MIN	69 44	52 35	53 36	51 36	43 36	50 39	50 36	50 31	45 33	50 40	44 33	43 35	43 31	50 29	53 35	53 34	55 35	41 35	39 28	40 26	41 26	39 24	48 36	63 40	62 35	51 33	45 28	55 36	50 40	49 28	36 22	48.8			
LOWER SOUTHERN 03 MECHANICSVILLE 5 NE	07	MAX MIN	64 45	73 37	40 35	54 28	45 30	44 38	50 35	50 31	37 31	43 33	49 32	44 25	45 25	55 26	55 34	50 34	56 31	40 31	39 22	37 22	43 25	41 25	47 37	63 46	55 28	51 28	58 34	58 40	41 36	41 20		48.9			
SOLOMONS	08	MAX MIN	67 30	73 37	52 37	55 36	46 39			50 33	44 35	48 42	48 34	44 39			52 21	51 42	53 40	55 35	40 34			42 29	46 36	50 43	63 32			57 34	42 37	39 28		50.8			
UPPER SOUTHERN 04 BALTIMORE WASH INTL AP	24	MAX MIN	69 43	43 34	50 36	45 28	41 39	49 40	47 35	35 30	45 33	49 37	38 31	42 31	44 27	52 37	46 33	54 35	40 32	42 28	38 24	42 27	40 23	49 40	61 46	61 35	53 28	58 28	60 35	45 36	42 25	35 20		47.4			
BELTSVILLE	08	MAX MIN	65 40	71 35	40 34	51 28	44 30	42 39	50 35	47 30	35 31	45 35	47 34	39 32	42 25	45 26	52 29	57 31	46 32	53 33	39 22	39 23	38 25	39 31	41 39	47 47	58 27	53 28	61 32	59 40	43 35	40 21		47.8			
DALECARLIA RSVR	08	MAX MIN	67 38	72 35	40 35	51 30	44 32	43 39	49 35	47 29	36 31	43 34	47 33	40 34	43 26	45 27	52 30	58 34	57 37	53 33	39 24	39 27	39 26	39 32	41 37	40 44	45 29	57 44	54 29	59 38	59 40	42 34	41 23		48.1		
LAUREL 3 W	24	MAX MIN	71 43	43 32	49 34	47 33	40 37	49 38	45 29	42 27	43 31	47 36	38 30	42 33	43 29	51 40	57 33	49 37	52 38	44 33	40 31	38 26	41 28	35 26	47 45	51 43	57 30	52 43	56 32	58 43	46 37	41 25	37 22		46.8		
MARYLAND SCIENCE CENTER	24	MAX MIN	72 45	45 34	49 36	44 34	41 39	46 39	46 35	36 31	44 34	47 37	38 32	42 35	43 34	52 39	45 37	51 38	38 33	40 30	39 33	43 31	41 41	48 43	55 40	58 37	53 42	56 42	59 40	46 33	40 28	35 23		46.5			
NATL ARBORETUM DC	07	MAX MIN	64 41	70 36	47 36	55 32	45 35	44 40	52 35	56 31	40 33	47 33	49 40	41 32	44 27	47 29	49 32	56 33	53 36	54 34	40 34	41 25	39 30	42 27	45 32	55 45	70 31	54 31	54 35	58 41	59 36	44 24	41 23		50.2		
OXON HILL	08	MAX MIN	65 39	71 37	40 34	51 31	45 33	43 38	50 35	47 30	36 32	43 35	48 34	42 33	44 27	46 30	53 38	57 37	47 33	54 33	40 28	40 29	37 28	42 32	38 38	47 47	60 30	56 30	52 35	58 41	57 35	45 35	41 23		48.2		
UPPER MARLBORO 3 NNW	08	MAX MIN	65 38	73 36	40 34	52 28	44 28	43 38	51 35	47 30	35 31	44 34	49 34	41 33	43 25	46 25	52 28	59 31	47 32	55 33	41 21	40 22	44 23	39 29	47 39	63 45	54 28	53 27	58 30	59 40	43 35	42 19		48.7			
NORTHERN CENTRAL 06 ABERDEEN PHILLIPS FLD	07	MAX MIN	55 39	64 34	40 35	47 28	46 28	43 39	47 35	47 29	37 30	45 37	47 36	37 35	43 30	50 30	50 35	45 36	54 36	40 37	42 28	36 28	41 24	46 25	54 46	59 47	53 30	51 29	56 29	56 40	47 33	40 23		47.4			

DAILY TEMPERATURES (°F)

STATION	OB. TIME	MAX/MIN	DAY OF MONTH																															AVERAGE	
			01	02	03	04	05	06	07	08	09	10	11	12	13	14	15	16	17	18	19	20	21	22	23	24	25	26	27	28	29	30	31		
BRIGHTON DAM	08	MAX	59	70	39	47	43	40	47	44	44	43	45	38	41	41	50	54	44	50	38	38	36	37	38	46		56	41	57	56	42	37	45.4	
		MIN	38	34	33	29	30	37	34	29	29	33	32	32	24	27	32	32	31	30	32	21	26	23	28	28		27	28	28	38	33	19	29.9	
CONOWINGO DAM	07	MAX	57	37	44	37	41	45	43	35	42	44	36	40	39	43	41	44	45	38	39	34	36	41	49	57	50	45	50	51	42	35	31	42.3	
		MIN	35	33	29	28	31	35	27	27	35	33	30	31	30	32	30	31	32	32	28	28	22	23	40	45	30	28	28	39	30	21	22	30.5	
CYLBURN	08	MAX	58	72	39	47	44	41	47	44	45	46	46	40	41	49	52	45	52	37	39	36	40	41	50	59	51	52	59	57	44	38	46.6		
		MIN	39	33	33	32	34	37	33	28	29	35	33	30	31	29	32	36	39	31	31	27	27	24	28	41	46	31	31	32	38	32	25	32.5	
DAMASCUS 3 SSW	22	MAX	69	41	44	42	39	46	40	32	41	43	36	38	41	49	55	43	49	35	37	34	36	32	43	53	54	49	57	54	44	36	32	43.4	
		MIN	41	32	33	29	36	37	30	26	29	34	30	31	28	35	39	34	35	29	28	21	28	25	31	41	36	31	33	33	35	25	21	31.5	
EMMITSBURG 2 SE	07	MAX	55	69	41	51	44	40	43	34	43	43	45	37	41	42	51	54	45	50	40	42	34	40	37	45	52	54	51	58	55	46	40	45.9	
		MIN	37	35	32	32	31	36	34	28	26	30	33	32	24	24	33	31	31	31	31	22	22	21	21	35	43	25	25	28	42	28	22	29.8	
FREDERICK 2 NNE	07	MAX																																	M
		MIN																																	M
MILLERS 4 NE	18	MAX	67	44	46	44	38	45	45	35	39	45	37	38	40	47	54	43	49	38	41	36	38	34	48	51	57	49	59	53	47	38	32	44.4	
		MIN	44	31	32	28	34	36	31	24	28	37	30	30	28	31	38	34	38	30	31	26	26	20	32	45	42	28	34	41	33	28	20	31.9	
SMITHSBURG 2NW	08	MAX																																	M
		MIN																																	M
APPALACHIAN MOUNTAIN 07																																			
CUMBERLAND 2	18	MAX	50	63	39	51	42	41	43	47	37	46	43	37	42	45	49	56	47	44	35	35	39	45	35	39	51	48	57	64	55	46	41	45.5	
		MIN	36	35	35	36	36	36	32	24	25	32	29	30	33	36	43	34	34	29	30	24	24	24	24	33	38	27	27	32	32	27	23	31.0	
FROSTBURG 2	07	MAX	56	56	33	49	35	36	40	38	29	40	34	34	31	36	40	48	42	36	26	26	30	36	30	48	39	49	56	46	37	31	38.8		
		MIN	35	28	27	28	29	30	26	23	23	28	22	22	24	28	35	32	35	22	22	19	21	19	19	30	35	30	30	35	27	20	15	26.4	
SHARPSBURG 5 S	07	MAX	65	69	36	50	42	40	45	45	33	40	42	38	40	45	50	57	43	49	36	38	35	39	34	39	54	51	52	60	57	44	38	45.4	
		MIN	36	33	32	27	27	37	27	22	23	29	32	29	24	27	36	35	36	31	31	18	19	20	25	32	39	25	24	27	36	27	17	28.5	
WILLIAMSPORT	06	MAX	58			51										51	55																		M
		MIN	38			35										37	39																		M
ALLEGHENY PLATEAU 08																																			
OAKLAND 1 SE	07	MAX	60	60	52	50	36	47	53	40	33	45	32	29	33	37	37	50	53	35	28	24	33	37	38	47	61	36	48	43	44	37	26	41.4	
		MIN	51	28	28	26	27	27	24	25	25	30	20	20	23	26	34	27	35	28	21	21	21	20	20	33	33	26	25	26	29	19	6	25.9	
SAVAGE RIVER DAM	08	MAX	58	55	34	50	38	37	44	41	31	44	36	33	37	39	42	47	40	44	29	29	32	35	30	36	50	40	46	54	49	39	33	40.4	
		MIN	35	32	30	33	33	33	29	26	27	29	26	26	28	32	39	31	33	26	25	24	24	21	21	30	36	29	29	30	31	24	20	28.8	
SINES DEEP CREEK	07	MAX	57	55	55	50	35			54	34	43	33	29			47		48		25			36	38	45		48			50	37	34	M	
		MIN	17	30	30	29	29			25	26	28	22	22			27		24		22			20	20	32		26			25	21	17	M	
DELAWARE NORTHERN 01																																			
WILMINGTON NEW CASTLE CO AP	24	MAX	65	42	47	45	43	49	47	37	46	44	39	40	42	47	48	49	54	42	43	37	41	44	52	65	65	51	56	57	47	39	34	47.0	
		MIN	42	35	37	29	37	42	33	28	37	35	32	33	33	32	33	30	36	35	27	28	25	22	44	47	39	31	30	35	34	26	20	33.1	
WILMINGTON PORTER RES	24	MAX	63	63	45	42	42	41	47	43	33	42	36	38	41	45	45	49	52	38	39	34	36	41	50	60	62	63	54	54	55	36	30	45.8	
		MIN	37	33	36	29	29	35	40	32	26	33	21	31	32	34	34	33	36	32	28	24	28	27	41	45	37	33	33	33	35	27	20	32.1	
SOUTHERN 02																																			
DOVER	16	MAX	69	64	52	51	44	52	45	38	44	44	43	41	44	45	48	53	54	50	40	38	42	40	53	65	65	50	54	57	53	40	36	48.8	

MARYLAND AND DELAWARE
201412

DAILY TEMPERATURES (°F)

STATION	OB. TIME	MAX/MIN	DAY OF MONTH																															AVERAGE
			01	02	03	04	05	06	07	08	09	10	11	12	13	14	15	16	17	18	19	20	21	22	23	24	25	26	27	28	29	30	31	
		MIN	49	34	38	27	36	42	38	28	33	39	30	30	31	29	41	32	40	35	30	25	25	23	40	46	49	34	33	42	39	32	22	34.6

SNOWFALL AND SNOW ON GROUND (INCHES)

STATION	DAY OF MONTH																															
	01	02	03	04	05	06	07	08	09	10	11	12	13	14	15	16	17	18	19	20	21	22	23	24	25	26	27	28	29	30	31	
MARYLAND																																
SOUTHERN																																
EASTERN SHORE 01																																
ASSATEAGUE																																
PRINCESS ANNE																																
SALISBURY 2N																																
SALISBURY FAA AP																																
SNOW HILL 4 N																																
CENTRAL																																
EASTERN SHORE 02																																
ROYAL OAK 2 SSW																																
UPPER SOUTHERN 04																																
BALTIMORE WASH INTL AP																																
BELTSVILLE																																
DALECARLIA RSVR																																
LAUREL 3 W																																
MARYLAND SCIENCE CENTER																																
NATL ARBORETUM DC																																
OXON HILL																																
UPPER MARLBORO 3 NNW																																
NORTHERN CENTRAL 06																																
ABERDEEN PHILLIPS FLD																																
BRIGHTON DAM																																
CONOWINGO DAM																																
CYLBURN																																
DAMASCUS 3 SSW																																
EMMITSBURG 2 SE																																

Snowfall: Includes snow and ice. Values for NWS stations (J index note) are Mid-Mid (LST).

Snow on ground: Includes snow, sleet, ice, and hail. Values for NWS stations (J index note) are observed at 12 UTC (GMT).

Water Equivalent: Given for NWS stations (J index note) only, when snow depth is 2 inches or more, and is measured at 18 UTC (GMT)

SNOWFALL AND SNOW ON GROUND (INCHES)

STATION		DAY OF MONTH																														
		01	02	03	04	05	06	07	08	09	10	11	12	13	14	15	16	17	18	19	20	21	22	23	24	25	26	27	28	29	30	31
FREDERICK 2 NNE MILLERS 4 NE	SNOWFALL																															
	SNOWFALL SN ON GND WTR EQUIV		T						T			0.5	T																			
SMITHSBURG 2NW APPALACHIAN MOUNTAIN 07	SNOWFALL																															
	SNOWFALL SN ON GND WTR EQUIV		T																													
CUMBERLAND 2 FROSTBURG 2	SNOWFALL	-	-	-	-	-	-	-	-	0.3	-	-	-	-	-	-	-	-	-	-	-	-	-	-	-	-	-	-	-	-	-	
	SNOWFALL SN ON GND WTR EQUIV			T						0.4	T	0.2																				
SHARPSBURG 5 S WILLIAMSPORT	SNOWFALL																															
	SNOWFALL SN ON GND WTR EQUIV		-	-	-	-	-	-	-	-	-	-	-	-	-	-	-	-	-	-	-	-	-	-	-	-	-	-	-	-	-	
ALLEGHENY PLATEAU 08 OAKLAND 1 SE	SNOWFALL										0.1	1.0							0.1													
	SNOWFALL SN ON GND WTR EQUIV											1																				
SAVAGE RIVER DAM	SNOWFALL	-	-	-	-	-	-	-	-	-	-	-	-	-	-	-	-	-	-	T	-	-	-	-	-	-	-	-	-	-	-	
	SNOWFALL SN ON GND WTR EQUIV																			T												
SINES DEEP CREEK	SNOWFALL	8.0	-	-	-	-	-	-	-	-	-	T	-	-	-	-	-	-	-	-	-	-	-	-	-	-	-	-	-	-		
	SNOWFALL SN ON GND WTR EQUIV																															
DELAWARE NORTHERN 01 WILMINGTON NEW CASTLE CO AP	SNOWFALL																															
	SNOWFALL SN ON GND WTR EQUIV		T								T	0.2																				
WILMINGTON PORTER RES	SNOWFALL																															
	SNOWFALL SN ON GND WTR EQUIV																															
SOUTHERN 02 DOVER	SNOWFALL																															
	SNOWFALL SN ON GND WTR EQUIV											T																				

Snowfall: Includes snow and ice. Values for NWS stations (J index note) are Mid-Mid (LST).

Snow on ground: Includes snow, sleet, ice, and hail. Values for NWS stations (J index note) are observed at 12 UTC (GMT).

Water Equivalent: Given for NWS stations (J index note) only, when snow depth is 2 inches or more, and is measured at 18 UTC (GMT)

PAN EVAPORATION AND WIND

STATION		DAY OF MONTH																															TOTAL OR AVERAGE				
		01	02	03	04	05	06	07	08	09	10	11	12	13	14	15	16	17	18	19	20	21	22	23	24	25	26	27	28	29	30	31					
MARYLAND UPPER SOUTHERN 04 BELTSVILLE	WIND	-	-	-	-	-	-	-	-	-	-	-	-	-	-	-	-	-	-	-	-	-	-	-	-	-	-	-	-	-	-	-	-	-	M		
	EVAP	-	-	-	-	-	-	-	-	-	-	-	-	-	-	-	-	-	-	-	-	-	-	-	-	-	-	-	-	-	-	-	-	-	M		
	MAX	-	-	-	-	-	-	-	-	-	-	-	-	-	-	-	-	-	-	-	-	-	-	-	-	-	-	-	-	-	-	-	-	-	-	M	
	MIN	-	-	-	-	-	-	-	-	-	-	-	-	-	-	-	-	-	-	-	-	-	-	-	-	-	-	-	-	-	-	-	-	-	-	M	
UPPER MARLBORO 3 NNW	WIND	-	-	-	-	-	-	-	-	-	-	-	-	-	-	-	-	-	-	-	-	-	-	-	-	-	-	-	-	-	-	-	-	-	M		
	EVAP	-	-	-	-	-	-	-	-	-	-	-	-	-	-	-	-	-	-	-	-	-	-	-	-	-	-	-	-	-	-	-	-	-	M		
	MAX	-	-	-	-	-	-	-	-	-	-	-	-	-	-	-	-	-	-	-	-	-	-	-	-	-	-	-	-	-	-	-	-	-	-	M	
	MIN	-	-	-	-	-	-	-	-	-	-	-	-	-	-	-	-	-	-	-	-	-	-	-	-	-	-	-	-	-	-	-	-	-	-	M	
ALLEGHENY PLATEAU 08 SAVAGE RIVER DAM	WIND	-	-	-	-	-	-	-	-	-	-	-	-	-	-	-	-	-	-	-	-	-	-	-	-	-	-	-	-	-	-	-	-	-	M		
	EVAP	-	-	-	-	-	-	-	-	-	-	-	-	-	-	-	-	-	-	-	-	-	-	-	-	-	-	-	-	-	-	-	-	-	-	M	
	MAX	-	-	-	-	-	-	-	-	-	-	-	-	-	-	-	-	-	-	-	-	-	-	-	-	-	-	-	-	-	-	-	-	-	-	-	M
	MIN	-	-	-	-	-	-	-	-	-	-	-	-	-	-	-	-	-	-	-	-	-	-	-	-	-	-	-	-	-	-	-	-	-	-	M	

Evaporation: Is measured in hundreths of inches.

Wind: Is measured in miles.

Max and Min: The maximum and minimum temperatures (Fahrenheit) of the water in the evaporation pan.

STATION INDEX

STATION	INDEX NO.	DIVISION	COUNTY	LATITUDE	LONGITUDE	ELEVATION (IN FEET)	OBSERVATION TIME AND TABLES			
							LOCAL STD TIME			
							TEMP	PRECIP	EVAP	SPECIAL SEE (NOTES)
MARYLAND										
ABERDEEN PHILLIPS FLD	0015	06	HARFORD	39 28	76 10W	57	07	07		CH
ASSATEAGUE	0335	01	WORCESTER	38 4	75 13W	10	VAR	VAR		H
BALTIMORE WASH INTL AP R	0465	04	ANNE ARUNDEL	39 10	76 41W	156	24	24		HJ
BELTSVILLE	0700	04	PRINCE GEORGE'S	39 2	76 56W	145	08	08	08	CH
BRIGHTON DAM	1125	06	MONTGOMERY	39 11	77 0W	330	08	08		H
CONOWINGO DAM	2060	06	HARFORD	39 39	76 11W	40	07	07		H
CUMBERLAND 2	2282	07	ALLEGANY	39 39	78 45W	730	18	18		H
CYLBURN	2308	06	BALTIMORE	39 21	76 39W	235	08	08		H
DALECARLIA RSVR	2325	04	DISTRICT OF COLUMBIA	38 56	77 7W	150	08	08		H
DAMASCUS 3 SSW	2336	06	MONTGOMERY	39 16	77 14W	700	22	22		H
EMMITSBURG 2 SE	2906	06	FREDERICK	39 41	77 17W	403	07	07		H
FREDERICK 2 NNE	3353	06	FREDERICK	39 26	77 24W	280	07	07		H
FROSTBURG 2	3415	07	ALLEGANY	39 40	78 56W	2170	07	07		H
LAUREL 3 W	5111	04	PRINCE GEORGE'S	39 5	76 54W	400	24	24		H
MARYLAND SCIENCE CENTER R	5718	04	BALTIMORE (CITY)	39 17	76 37W	20	24	24		H
MECHANICSVILLE 5 NE	5865	03	ST. MARY'S	38 28	76 42W	100	07	07		H
MILLERS 4 NE	5934	06	CARROLL	39 43	76 48W	860	18	18		CH
NATL ARBORETUM DC	6350	04	DISTRICT OF COLUMBIA	38 55	76 58W	50	07	07		H
OAKLAND 1 SE	6620	08	GARRETT	39 25	79 24W	2420	07	07		H
OXON HILL	6800	04	PRINCE GEORGE'S	38 47	76 60W	120	08	08		H
PRINCESS ANNE	7330	01	SOMERSET	38 13	75 41W	20	17	17		H
ROYAL OAK 2 SSW	7806	02	TALBOT	38 43	76 11W	10	17	17		H
SALISBURY 2N	8004	01	WICOMICO	38 24	75 36W	20	17	17		H
SALISBURY FAA AP	8005	01	WICOMICO	38 20	75 31W	48	24	24		H
SAVAGE RIVER DAM	8065	08	GARRETT	39 31	79 8W	1495	08	08	08	CH
SHARPSBURG 5 S	8207	07	WASHINGTON	39 24	77 43W	500	07	07		H
SINES DEEP CREEK	8315	08	GARRETT	39 31	79 25W	2040	07	07		H
SMITHSBURG 2NW	8371	06	WASHINGTON	39 40	77 35W	670	08	08		H
SNOW HILL 4 N	8380	01	WORCESTER	38 14	75 23W	30	17	17		H
SOLOMONS	8405	03	CALVERT	38 19	76 27W	12	08	08		H
UPPER MARLBORO 3 NNW	9070	04	PRINCE GEORGE'S	38 51	76 46W	130	08	08	08	H
WILLIAMSPORT	9570	07	WASHINGTON	39 37	77 51W	360	06	06		H
DELAWARE										
DOVER	2730	02	KENT	39 9	75 30W	30	16	16		H
MILTON 1SE	6104	02	SUSSEX	38 46	75 17W	33	07	07		H
WILMINGTON NEW CASTLE CO AP R	9595	01	NEW CASTLE	39 40	75 36W	79	24	24		HJ
WILMINGTON PORTER RES	9605	01	NEW CASTLE	39 46	75 32W	270	24	24		H

REFERENCE NOTES

STATION NAMES: Name of the city, town or locality. Figures and letters following the station names indicate the distance in miles and direction from the post office or town community center.

DIVISIONS: Areas within a state of similar climatological characteristics. Division averages are calculated using data from stations that record temperature and/or precipitation. Station Precipitation totals flagged with an 'F' or 'M' are excluded from the Divisional Average calculations of precipitation. Stations with monthly Temperature averages flagged with an 'F' or 'M' are included in the Divisional Average if there are no more than 9 flagged or missing daily values in the month, else they are excluded from the divisional average for temperature.

NORMALS: The average value of the meteorological element over a time period. Effective 1 January 2012, the averaging period is 1981 to 2010. The normals for National Weather Service localities have been adjusted so as to be representative for the current observation site.

MONTHLY DEGREE DAY TOTALS: One heating (cooling) degree day is accumulated for each whole degree that the daily mean temperature is below (above) 65 degrees Fahrenheit.

PRECIPITATION: Values shown in hundredths of inches are water equivalent totals, i.e., total of liquid and melted frozen precipitation. In the "Monthly Summarized Data" table the total snow and sleet values shown in tenths of inches are unmelted amounts. The max depth on ground values of snow and sleet shown in whole inches are cumulative unmelted amounts. The number of days with .10, .50, 1.00 or more refers to water equivalents.

PRECIPITATION QUALITY CONTROL: The NCDC quality control process may flag precipitation data that are spatially inconsistent, exceed climatological limits, or are inconsistent with prevailing weather patterns.

TEMPERATURE: Original temperature values are given in the "Daily Temperature" table. Summary temperature information (averages, departures, extremes, monthly degree day totals) is based on the values labeled MAX/MIN.

WIND: (As shown in the "Evaporation and Wind" table) the total wind movement in miles over the evaporation pan as determined by an anemometer recorder located 6-8 inches above the pan.

SYMBOLS AND LETTERS USED IN THE STATION INDEX TABLE

C Station is equipped with recording rain gage (R) but values in this bulletin are from a non-recording rain gage unless indicated by an R.

G Observations appear in the "Soil Temperatures" table.

H Observations appear in the "Snowfall and Snow on the Ground" table.

J Station also published as a Local Climatological Data publication.

VAR Observation time varies.

SR / SS Observation time near sunrise / Observation time near sunset, respectively.

SYMBOLS AND LETTERS USED IN THE DATA TABLES

(DAILY DATA ARE FOR THE 24 HOURS IMMEDIATELY PRECEDING OBSERVATION TIME.)

BLANK Entries in the "Monthly Summarized Data" table indicate no record.

BLANK Entries in the "Daily Precipitation" and "Snowfall and Snow on the Ground" tables indicate zero.

BLANK Entries in the "Daily Temperature" table indicate a missing record

- No record. Data not recorded or not received in time for publication.

+ Precipitation or temperature extremes occurred on one or more previous dates during the month.

* Rain gage not read. Precipitation is included in the amount following the asterisks.

Time distribution may not be known. A * preceding the monthly total indicates precipitation amount is being carried forward to next month's total, and may include amounts from the previous month(s).
a As a subscript, indicates accumulated total.

A Amount of precipitation is the total of observer's entries for the current month. It may include precipitation that occurred during the previous month. Refer to earlier bulletin to determine date of last

reading. (Hawaii stations)

B Divisional Departure from normals are computed using 1981-2010 normals.

E Normalized HDD/CDD Calculation. E is appended to the HDD/CDD Calculation when 1-9 individual daily TMAX and/or TMIN values are missing and a Normalized HDD/CDD Calculation is provided. M appears alone if 10 or more daily values are missing.

F Monthly calculation flagged value. F is appended to average and/or total values computed which exclude one or more daily data values that have been flagged by the GHCN-Daily Dataset

M Insufficient or partial data. M is appended to average and/or total values computed with 1-9 daily values missing. M appears alone if 10 or more daily values are missing, (8 or more for wind and evaporation).

N Indicates snow fall or Snowdepth totals are computed with one or more missing days.

R Amounts from recording rain gage.

T Trace. An amount too small to measure.

SEASONAL TABLES: Monthly and seasonal snowfall and heating degree days for the 12 months ending with the June data are published in the July issue of this bulletin. Cooling degree days for the calendar year are published in the "Climatological Data Annual Summary."

Information concerning the history of changes in locations, exposure, etc. of substations is kept on file at the National Climatic Data Center. Historical information of regular National Weather Service Offices may be obtained from the "Local Climatological Data" annual publication. The contents of this publication may be reprinted or otherwise used freely, with proper credit to the National Climatic Data Center. The data are also available digitally.

Effective with the January 2011 Data-Month, COOP Observer Names are no longer included in the Monthly and Annual Climatological Data Publications. This information is not published to ensure the privacy of personal information pursuant to Section 208 of the E-Government Act of 2002 (44 USC 3601).

As of the 2011 Data-Year, Station and Climate Division Maps are no longer being included in the CD Publications. NCDC's Product Development Branch provides updated Station Maps for various data networks via the Historical Observing Metadata Repository: <http://www.ncdc.noaa.gov/homr>.

The GHCN-Daily Quality Control Flags shown below are displayed as superscripts with the data. For more Information on Global Historical Climatology Network - Daily and flags, see: <http://www.ncdc.noaa.gov/oa/climate/ghcn-daily/> and Comprehensive Automated Quality Assurance of Daily Surface Observations. Durre, Imke, Matthew J. Menne, Byron E. Gleason, Tamara G. Houston, Russell S. Vose, 2010: J. Appl. Meteor. Climatol., 49, 1615-1633. doi: 10.1175/2010JAMC2375.1

Blank = Passed All checks

D = failed duplicate check

G = failed gap check

I = failed internal consistency check

K = failed streak/frequent-value check

L = failed check on length of multiday period

M = failed megaconsistency check

N = failed naught check

O = failed climatological outlier check

R = failed lagged range check

S = failed spatial consistency check

T = failed temporal consistency check

W = temperature too warm for snow

X = failed bounds check

Z = flagged as a result of an official Datzilla investigation

Beginning with the January 2013 CD Publication, monthly mean temperature calculations have changed to the National Data Stewardship Team standard. Monthly maximum and minimum temperatures are not rounded until after the monthly mean temperature is calculated. This is the most accurate outcome, but may be slightly different from the mean derived from rounded monthly maximum and minimum.

Processing Updates and Errata: The CD Publications are periodically reproduced to include the addition of late reports and reported corrections. The GHCND data version noted on the cover of the publication provides the generation date.

The climate division temperature and precipitation values in this publication are based on simple averages from the current set of NWS-Designated Open and Published COOP and First Order Sites within each division. These values differ from those found in NCDC's nClimDiv product. Beginning in February 2014, the nClimDiv product is used by NCDC's Climate Monitoring Branch and in its monthly climate reports. For more details on nClimDiv, please go to <http://www.ncdc.noaa.gov/monitoring-references/maps/us-climate-divisions.php>.

NOAA\National Climatic Data Center
Attn: User Engagement & Services Branch
151 Patton Avenue
Asheville, NC 28801-5001

Customer Services Number: (828) 271-4800, option 2
TDD : (828) 271-4010
Fax number: (828) 271-4876

NCDC now offers free online access to the *Climatological Data* publication.
Go to : www.ncdc.noaa.gov and choose Most Popular.