



CLIMATOLOGICAL DATA

MARYLAND AND DELAWARE

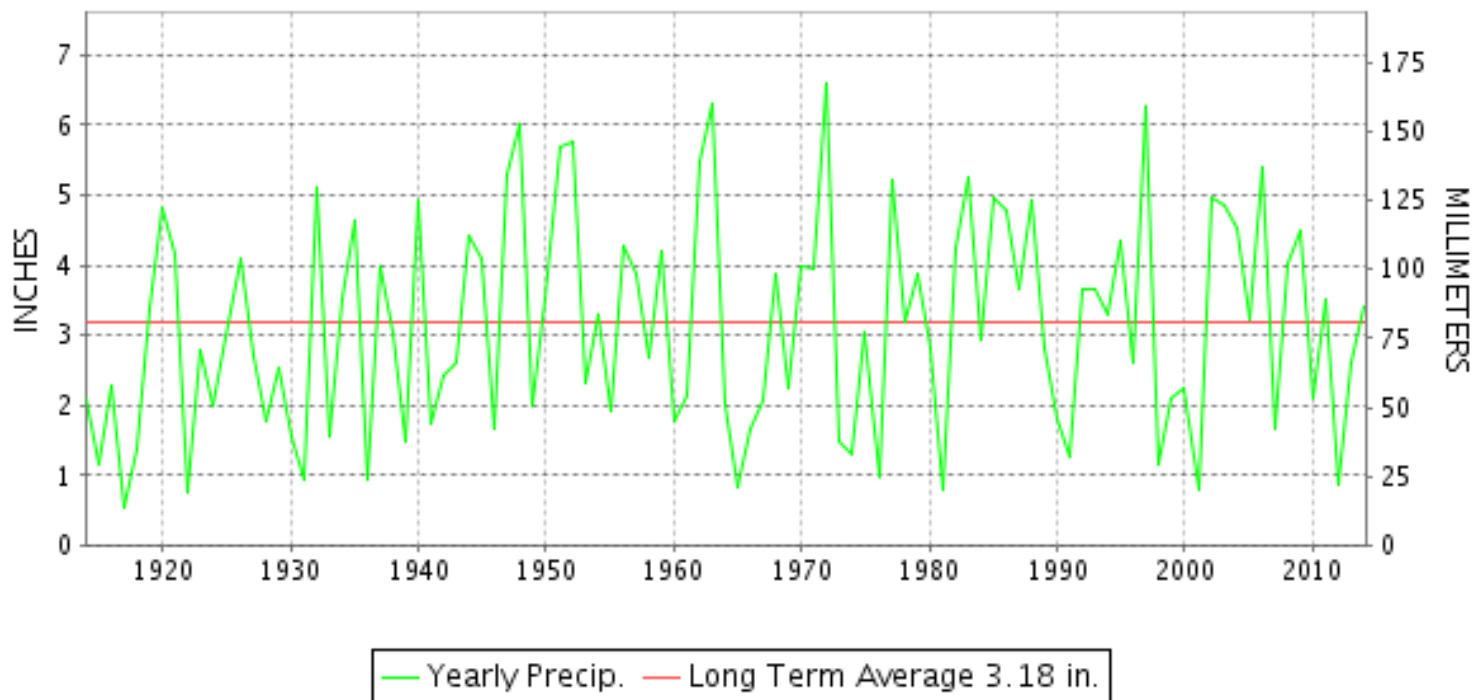
NOVEMBER 2014

VOLUME 118 NUMBER 11

ISSN 0145-0549

GHCND Ver: 3.20-upd-2015032505

NOVEMBER PRECIPITATION BY YEAR



TEMPERATURE AND PRECIPITATION EXTREMES

MARYLAND

HIGHEST TEMPERATURE	75	NOVEMBER 05	CUMBERLAND 2
LOWEST TEMPERATURE	8	NOVEMBER 19+	OAKLAND 1 SE
GREATEST TOTAL PRECIPITATION	3.85		SALISBURY 2N
LEAST TOTAL PRECIPITATION	1.71		SAVAGE RIVER DAM
GREATEST 1 DAY PRECIPITATION	1.40	NOVEMBER 26	SALISBURY 2N
GREATEST TOTAL SNOWFALL	12.4		OAKLAND 1 SE
GREATEST DEPTH OF SNOW OR ICE	7		OAKLAND 1 SE

"I certify that this is an official publication of the National Oceanic and Atmospheric Administration (NOAA) It is compiled using information from weather observing sites supervised by NOAA/National Weather Service and received at the National Climatic Data Center(NCDC), Asheville, North Carolina 28801."

Director
National Climatic Data Center

noaa

National
Oceanic and
Atmospheric Administration

National
Environmental Satellite, Data
and Information Service

National
Climatic Data Center
Asheville, North Carolina

DELAWARE

HIGHEST TEMPERATURE	72	NOVEMBER 24	WILMINGTON NEW CASTLE CO AP
LOWEST TEMPERATURE	19	NOVEMBER 19+	2 STATIONS
GREATEST TOTAL PRECIPITATION	4.43		DOVER
LEAST TOTAL PRECIPITATION	4.20		WILMINGTON NEW CASTLE CO AP
GREATEST 1 DAY PRECIPITATION	1.65	NOVEMBER 26	WILMINGTON PORTER RES
GREATEST TOTAL SNOWFALL	0.3		WILMINGTON NEW CASTLE CO AP

MONTHLY STATION AND DIVISION SUMMARY

STATION	TEMPERATURE (°F)													PRECIPITATION (IN)										
	AVERAGE MAXIMUM	AVERAGE MINIMUM	AVERAGE	DEPARTURE FROM NORMAL	HIGHEST	DATE	LOWEST	DATE	HEATING DEG. DAYS	COOLING DEG. DAYS	NO. OF DAYS				TOTAL	DEPARTURE FROM NORMAL	GREATEST 24 HOURS	DATE	ICE PELLETS, SNOW			NO. OF DAYS		
											MAX		MIN						TOTAL	MAX DEPTH ON GROUND	DATE	.10 OR MORE	.50 OR MORE	1.00 OR MORE
											>=90	<=32	<=32	<=0										
	APPALACHIAN MOUNTAIN 07																							
CUMBERLAND 2	49.9	31.3	40.6	-4.8	75	05	13	22	724	0	0	1	18	0	1.82	-1.16	0.62	27	M 3.6	M 2	27	7	1	0
FROSTBURG 2	43.3	26.7	35.0	-5.5	67	25+	9	20	893	0	0	5	20	0	1.99	-1.68	0.48	06	M 9.5	M 6	28	5	0	0
SHARPSBURG 5 S	50.3M	27.1M	38.7M	-5.8	72	05	12	20+	783E	0	0	1	16	0	M 1.37	-2.03	0.42	06	0.0			4	0	0
WILLIAMSPORT	M	M	M		55	10	30	17	675E	0	0	0	1	0	M				M 0.0	0				
--DIVISIONAL DATA----->			38.1	-4.6B											1.91	-1.36B								
ALLEGHENY PLATEAU 08																								
OAKLAND 1 SE	44.4	24.7	34.6	-4.7	72	12	8	19+	905	0	0	6	25	0	3.34	-0.49	0.75	08	12.4	7	29	11	2	0
SAVAGE RIVER DAM	45.1	28.6	36.9	-4.3	68	25+	12	22	838	0	0	4	19	0	1.71	-1.29	0.48	27	M 2.0	M 2	29	5	0	0
SINES DEEP CREEK	M	M	M		64	25+	10	24+	898E	0	0	3	14	0	MA 2.40		0.80	07	M 1.9	1	19	4	1	0
--DIVISIONAL DATA----->			35.8	-3.8B											2.53	-1.03B								
DELAWARE NORTHERN 01																								
WILMINGTON NEW CASTLE CO AP	52.6	34.8	43.7	-2.9	72	24	19	19	634	0	0	0	12	0	4.20	1.10	1.23	17	0.3	0		6	4	2
WILMINGTON PORTER RES	49.9	33.9	41.9	-4.3	70	04	19	19	684	0	0	1	14	0	4.37	0.89	1.65	26	0.0	0		5	4	2
--DIVISIONAL DATA----->			42.8	-3.0B											4.29	0.91B								
SOUTHERN 02																								
DOVER	55.4	36.5	46.0	-3.2	71	24	20	19	562	0	0	0	11	0	A 4.43	0.95	1.29	17	M 0.0	0		5	3	2
--DIVISIONAL DATA----->			46.0	-1.7B											4.43	1.14B								

DAILY PRECIPITATION (INCHES)

STATION	TOTAL	DAY OF MONTH																																			
		01	02	03	04	05	06	07	08	09	10	11	12	13	14	15	16	17	18	19	20	21	22	23	24	25	26	27	28	29	30	31					
MARYLAND																																					
SOUTHERN																																					
EASTERN SHORE 01																																					
ASSATEAGUE	M	-	-	-	-	-	-	-	-	-	-	-	-	-	-	-	-	-	-	-	-	-	-	-	-	-	-	-	-	-	-	-	-	-			
PRINCESS ANNE	M	-	-			0.05	0.29	0.44	-	-		0.02		0.04		-	-	0.28						*	0.50 _a		-	-	-	-	-	-	-	-			
SALISBURY 2N	3.85		0.01				0.16	0.11	0.01					0.02			1.24	0.34	0.01						0.46	0.01	1.40	0.07	0.01								
SALISBURY FAA AP	1.83	0.02	T				0.09	T			T	T	T	T		T	0.54						T	0.32	T	0.86											
SNOW HILL 4 N	2.24						0.26	0.15			T	0.02	T	0.02			0.10	0.23						0.36	0.02	1.00	0.08										
CENTRAL																																					
EASTERN SHORE 02																																					
ROYAL OAK 2 SSW	3.47	0.32	0.05				0.35	T					T	0.03			1.20			T					0.32		1.10	0.10									
LOWER SOUTHERN 03																																					
MECHANICSVILLE 5 NE	2.91	0.05	0.06	T			0.12	0.22	T			T	T	0.03			T	0.84							0.34		0.53	0.72	T								
SOLOMONS	MA 3.19	*	*	0.09 _a			0.23	0.07	*	*	0.01 _a	0.01		0.05	*	*	0.63 _a	0.69					*	*	0.27 _a	0.01	1.06	0.06	0.01	-	-						
UPPER SOUTHERN 04																																					
BALTIMORE WASH INTL AP	3.36	0.11	T			0.06	0.54	T				T	0.04			0.07	0.98						0.06	0.31		1.19	T										
BELTSVILLE	3.14						0.47	0.19						0.05			0.27	0.64							0.35		0.41	0.76									
DALECARLIA RSVR	M 3.39						0.45	0.19		-				-		0.02	0.28	0.71			0.07				0.49		0.49	0.69									
LAUREL 3 W	2.61					0.07	0.76	0.03					0.07			0.08	0.01							0.02	0.43		1.14										
MARYLAND SCIENCE CENTER	3.40	0.08				0.09	0.69					0.07		0.07		0.03	0.95						0.03	0.31		1.15											
NATL ARBORETUM DC	M 2.97		0.01				0.35	0.16					0.04			0.22	0.62							0.33		0.38	0.86										
OXON HILL	2.86		T				0.23	0.36	T				0.04			0.14	0.60							0.27		0.28	0.94	T									
UPPER MARLBORO 3 NNW	3.01			0.01			0.27	0.61					0.10			0.19	0.48							0.30		0.30	0.75										
NORTHERN CENTRAL 06																																					
ABERDEEN PHILLIPS FLD	A 3.71	*	0.29 _a				0.66	0.10				0.02		0.08			0.36	0.72							0.36		0.12	1.00									
BRIGHTON DAM	3.32						0.65	0.10					0.10				0.32	0.54						0.41		0.55	0.65										
CONOWINGO DAM	3.63	0.25				0.60						0.19				0.31	0.85						0.60		0.13	0.70											
CYLBURN	M 1.50		0.03				0.65	0.05				T		0.07			-	0.70																			
DAMASCUS 3 SSW	3.39					0.03	0.78	T					0.09			0.19	0.49						0.04	0.47		1.28	0.01	0.01									
EMMITSBURG 2 SE	3.18	0.01					0.64					T		T			0.28	0.39						0.85		0.06	0.45	0.50	T		T						
FREDERICK 2 NNE	M	-	-	-	-	-	-	-	-	-	-	-	-	-	-	-	-	-	-	-	-	-	-	-	-	-	-	-	-	-	-	-	-	-	-		
MILLERS 4 NE	3.46	0.01	T				0.96	0.02					0.08	0.07		T	0.66							0.45		1.19	0.01	T	0.01								
SMITHSBURG 2NW	M	-	-	-	-	-	-	-	-	-	-	-	-	-	-	-	-	-	-	-	-	-	-	-	-	-	-	-	-	-	-	-	-	-	-	-	
APPALACHIAN																																					
MOUNTAIN 07																																					
CUMBERLAND 2	1.82	0.09	0.01				0.41	0.10	0.01								0.10	0.11							0.25		0.12	0.62	T		T						
FROSTBURG 2	1.99	0.14	0.01				0.48	0.25	0.03					T	T	T	0.08	0.06		T		T		0.34		0.08	0.44	0.08	T								
SHARPSBURG 5 S	M 1.37	T	T				0.42	T						0.03			0.31	0.24						0.37		-	-	-	-	-	-	-	-	-	-	-	
WILLIAMSPORT	M	-	-	-	-	-	-	-	-	-	-	-	-	-	-	-	0.22	-	-	-	-	-	-	-	-	-	-	-	-	-	-	-	-	-	-	-	
ALLEGHENY PLATEAU 08																																					
OAKLAND 1 SE	3.34	0.23	0.04				0.40	0.50	0.75			0.03		0.10			0.20	0.17	0.08						0.10		0.05	0.44	0.15	0.10							
SAVAGE RIVER DAM	1.71	0.17	0.04				0.43	0.22						T			0.08	T						0.21		0.08	0.48	T									

DAILY PRECIPITATION (INCHES)

STATION	TOTAL	DAY OF MONTH																														
		01	02	03	04	05	06	07	08	09	10	11	12	13	14	15	16	17	18	19	20	21	22	23	24	25	26	27	28	29	30	31
SINES DEEP CREEK	MA 2.40	*	*	0.00 _a	0.30		0.40	0.80	*	*	0.20 _a		-		0.07	*	*	0.15 _a	0.25	0.03			*	*	0.20 _a			-	-	-	-	
DELAWARE NORTHERN 01																																
WILMINGTON NEW CASTLE CO AP	4.20	0.66	T			0.01	0.59	T				0.01	0.15			0.07	1.23						T	T	0.36		1.12					
WILMINGTON PORTER RES	4.37	0.77				T	0.56	0.13								T	1.21								0.05		1.65					
SOUTHERN 02																																
DOVER	A 4.43	0.85				T	*	0.76 _a				T		0.04			1.29	0.10							0.17		1.22					

DAILY TEMPERATURES (°F)

STATION	OB. TIME	MAX/MIN	DAY OF MONTH																															AVERAGE		
			01	02	03	04	05	06	07	08	09	10	11	12	13	14	15	16	17	18	19	20	21	22	23	24	25	26	27	28	29	30	31			
MARYLAND SOUTHERN EASTERN SHORE 01 ASSATEAGUE	VA	MAX MIN																																		M M M M
PRINCESS ANNE	17	MAX MIN			63	72	70	67	64			66	72	74	73	49			69	54	52	56	53			74	70								M M M M	
SALISBURY 2N	17	MAX MIN	53	51	59	69	63	65	61	59	65	70	71	61	44	45	50	68	64	64	53	47	42	56	72	69	53	53	42	48	61			58.0		
SALISBURY FAA AP	24	MAX MIN	46	41	33	33	52	50	45	28	43	33	42	57	38	36	25	28	43	29	20	31	26	19	33	52	53	41	32	29	25	37		36.7		
SNOW HILL 4 N	17	MAX MIN	53	54	62	72	65	69	60	55	62	66	73	74	50	47	47	53	70	47	42	56	40	50	64	74	68	50	48	45	50	62		57.6		
CENTRAL EASTERN SHORE 02 ROYAL OAK 2 SSW	17	MAX MIN	48	42	33	40	51	50	37	30	39	34	42	49	40	32	27	27	46	28	20	35	21	18	29	64	49	39	30	25	24	38		36.2		
MECHANICSVILLE 5 NE	07	MAX MIN	54	52	62	71	64	65	62	55	61	64	68	72	68	46	47	54	67	67	38	56	52	49	59	74	68	56	47	48	50	62		58.6		
MECHANICSVILLE 5 NE	07	MAX MIN	45	48	31	39	52	47	44	26	32	30	39	58	38	36	23	23	42	32	15	30	22	16	28	50	55	37	32	27	26	34		35.2		
LOWER SOUTHERN 03 SOLOMONS	08	MAX MIN	51	51	61	67	64	67	57	53	57	65	68	69	58	45	43	50	56	51	38	53	45	46	57	71	67	48	43	42	47	60		55.0		
BALTIMORE WASH INTL AP	24	MAX MIN	40	47	43	37	45	50	42	34	36	43	41	46	41	34	25	24	43	27	24	33	21	19	38	51	45	35	30	33	23	40		36.3		
UPPER SOUTHERN 04 BELTSVILLE	08	MAX MIN	56	49	49	61	67	68	68	56	51	58	61	68	68	45	42	44	48	51	33	35	54	37	48	65	73	56	42	43	40	45		52.7		
DALECARLIA RSVR	08	MAX MIN	34	40	33	33	42	51	46	29	29	32	32	40	39	32	24	24	33	26	16	16	26	18	18	40	54	42	32	28	23	28		32.0		
LAUREL 3 W	24	MAX MIN	57	62	66	65	67	65	67			57	69	66	68	45			51	58	35	52	54			70	72	54	41	41				M M		
MARYLAND SCIENCE CENTER	24	MAX MIN	40	50	55	54	49				37	46	57	41	35			31	28	24	34	32			27	54	37	36	33					M M		
UPPER MARLBORO 3 NNW	08	MAX MIN	52	51	59	69	68	60	56	50	58	61	66	67	46	42	44	45	49	39	36	52	37	48	55	72	66	48	46	39	44	63		52.9		
ABERDEEN PHILLIPS FLD	07	MAX MIN	45	41	38	38	52	46	36	30	36	33	35	41	35	29	25	28	38	23	19	31	21	18	34	48	42	33	33	24	25	38		33.8		
NATL ARBORETUM DC	07	MAX MIN	54	51	50	60	67	68	63	54	51	58	64	71	66	45	40	43	45	49	31	37	53	36	48	65	71	56	41	45	38	47		52.2		
OXON HILL	08	MAX MIN	43	41	41	36	42	49	47	29	34	34	36	39	37	32	30	26	38	25	19	23	26	17	21	34	53	41	33	31	25	31		33.8		
MARYLAND SCIENCE CENTER	24	MAX MIN	55	51	50	61	65	65	66	54		57	64	70	62	41	43	45	48	32	38	54	36	49	67	72	55	40	46	39	46			52.5		
UPPER MARLBORO 3 NNW	08	MAX MIN	41	42	39	39	42	52	47	30		35	37	40	37		28	27	39	25	19	20	27	19	23	35	52	39	32	31	27	33		34.2		
NATL ARBORETUM DC	07	MAX MIN	51	50	60	68	57	61	54	49	58	63	71	66	52	41	43	43	47	41	36	51	36	47	58	71	66	48	44	37	44	64		52.6		
OXON HILL	08	MAX MIN	44	40	40	45	53	49	38	32	42	41	41	43	34	30	28	32	38	22	18	31	25	23	37	48	48	32	33	28	27	37		36.0		
MARYLAND SCIENCE CENTER	24	MAX MIN	52	50	58	67	69	58	54	51	58	60	65	66	46	41	44	46	47	38	37	52	37	49	52	71	65	50	43	38	45	60		52.3		
UPPER MARLBORO 3 NNW	08	MAX MIN	46	44	40	47	53	49	41	36	44	42	46	44	37	34	32	36	38	23	21	32	29	26	40	50	48	34	32	32	40			38.3		
ABERDEEN PHILLIPS FLD	07	MAX MIN	57	53	52	62	68	67	64	55	53	59	65	72	67	46	42	45	47	58	33	38		42	49	73	73	57	48	46	40	47		54.4		
UPPER MARLBORO 3 NNW	08	MAX MIN	41	42	42	41	51	52	48	32	39	36	38	43	39	33	30	29	39	26	22	26		32	34	36	54	45	35	32	28	36			37.3	
UPPER MARLBORO 3 NNW	08	MAX MIN	55	52	50	63	67	65	65	55	52	57	63	70	64	45	41	43	46	49	32	36	53	37	49	65	72	66	43	46	39	47			52.9	
UPPER MARLBORO 3 NNW	08	MAX MIN	44	41	41	43	43	51	48	31	32	37	38	42	39	33	30	30	37	25	21	20	29	21	22	38	52	43	33	32	28	31			35.2	
NORTHERN CENTRAL 06 ABERDEEN PHILLIPS FLD	07	MAX MIN	55	51	50	63	72	67	67	56	53	60	64	72	67	45	42	46	46	49	34	37	54	38	50	66	73	55	42	45	39	48			53.5	
ABERDEEN PHILLIPS FLD	07	MAX MIN	37	40	39	38	38	51	47	28	28	32	32	38	37	32	28	25	35	24	17	17	28	16	16	37	55	42	32	31	24	28			32.4	
ABERDEEN PHILLIPS FLD	07	MAX MIN	58	50	50	61	67	65	57	54	48	57	61	64	66	45	42	42	44	49	31	33	50	38	44	64	70	58	42	43	39	43			51.2	
ABERDEEN PHILLIPS FLD	07	MAX MIN	45	41	38	40	43	49	45	29	30	33	35	41	35	33	30	26	36	25	19	20	25	18	19	40	56	42	34	28	23	26			33.5	

DAILY TEMPERATURES (°F)

STATION	OB. TIME	MAX/MIN	DAY OF MONTH																															AVERAGE	
			01	02	03	04	05	06	07	08	09	10	11	12	13	14	15	16	17	18	19	20	21	22	23	24	25	26	27	28	29	30	31		
BRIGHTON DAM	08	MAX	53	50	49	57	69	66	66	52	48	55	61	67	62	43	39	41	43	47	29	35	49	34	47	62	68	53		42	37	44		50.6	
		MIN	43	40	37	35	46	49	43	28	34	31	33	45	34	29	27	25	37	22	17	22	25	16	22	34	49	37	29	25	31		32.6		
CONOWINGO DAM	07	MAX	55	48	58	64	62	52	52	47	54	57	61	62	44	40	40	43	46	29	35	48	34	42	61	66	53	41	39	36	41	49	48.6		
		MIN	41	35	37	41	46	44	30	30	33	32	40	38	32	27	26	32	23	16	16	25	18	18	34	50	40	32	28	23	24	34		31.5	
CYLBURN	08	MAX	53	50	49	56	68	66	55	53	49	55	59	65	64	44	39	42	43	47	30	34	48	48	46	59	69	54	39	42	38	43		50.2	
		MIN	44	41	38	43	50	49	44	31	33	35	38	39	36	31	28	28	36	23	18	18	26	20	27	38	52	39	32	30	25	29		34.0	
DAMASCUS 3 SSW	22	MAX	48	47	56	66	68	64	51	47	54	61	67	59	41	36	40	40	45	38	33	47	32	46	50	67	62	45	40	34	41	61		49.5	
		MIN	43	39	38	46	51	48	37	28	36	39	38	39	32	28	25	28	35	19	16	28	20	19	35	48	41	32	29	25	25	36		33.4	
EMMITSBURG 2 SE	07	MAX	52	51	51	58	69	60	56	53	47	57	62	66	60	42	41	42	40	45	35	32	48	36	43	60	68	58	42	42	37	41		49.8	
		MIN	42	41	37	37	39	50	44	30	30	31	31	30	33	29	28	25	25	23	19	19	25	14	14	36	43	37	31	30	25	25		30.8	
FREDERICK 2 NNE	07	MAX																																	M
		MIN																																	M
MILLERS 4 NE	18	MAX	49	49	55	71	66	54	52	47	55	64	69	62	47	38	42	40	46	43	32	46	35	42	55	68	64	44	40	36	40	55		50.2	
		MIN	41	38	35	43	51	48	40	29	35	34	36	47	33	28	23	25	34	20	15	26	22	16	32	43	44	32	28	26	21	35		32.7	
SMITHSBURG 2NW	08	MAX																																	M
		MIN																																	M
APPALACHIAN MOUNTAIN 07																																			
CUMBERLAND 2	18	MAX	55	49	49	65	75	62	65	50	50	61	67	70	50	41	37	42	44	42	25	43	42	35	41	59	73	51	35	41	36	41		49.9	
		MIN	44	37	37	38	52	52	46	27	27	32	33	35	38	28	25	24	31	19	18	19	25	13	14	31	45	34	32	29	27	27		31.3	
FROSTBURG 2	07	MAX	45	42	40	56	66	54	56	39	45	49	59	67	49	33	28	34	39	41	16	37	33	25	49	58	67	47	33	31	25	35		43.3	
		MIN	35	29	30	33	51	46	38	24	24	35	35	37	30	21	17	17	28	10	10	9	16	14	17	42	37	29	26	21	20	20		26.7	
SHARPSBURG 5 S	07	MAX	53	49	49	61	72	65	63	50	49	57		70	57	40	39	42	40	45	28	36	49	35	47	60								50.3	
		MIN	39	39	28	28	38	50	38	25	25	31		37	28	24	17	17	35	21	12	12	23	15	14	28								27.1	
WILLIAMSPORT	06	MAX										55																						M	
		MIN										39																						M	
ALLEGHENY PLATEAU 08																																			
OAKLAND 1 SE	07	MAX	46	39	40	55	66	52	54	40	49	48	66	72	41	31	30	33	43	47	15	38	35	26	47	59	67	47	36	32	26	51		44.4	
		MIN	36	28	28	32	49	46	37	24	23	28	28	28	30	20	17	16	31	8	8	9	16	9	9	29	37	30	29	22	15	20		24.7	
SAVAGE RIVER DAM	08	MAX	48	44	42	57	68	56	57	43	48	49	58	64	46	36	30	35	42	45	20	41	37	28	51	58	68	48	35	36	29	35		45.1	
		MIN	38	33	34	38	48	48	42	26	27	31	31	33	35	26	20	20	30	15	14	14	22	12	13	33	38	31	31	26	23	25		28.6	
SINES DEEP CREEK	07	MAX			41	52	62	52	53			47	64		41	32				39	41	16	38	32		57	64	46					M		
		MIN			24	24	32	45	38			24	29		31	22				14	10	10	11	17		10	34	29					M		
DELAWARE NORTHERN 01																																			
WILMINGTON NEW CASTLE CO AP	24	MAX	51	50	59	71	68	57	55	50	58	60	66	68	46	43	43	44	50	43	33	50	37	46	55	72	68	48	42	41	43	60		52.6	
		MIN	44	38	38	45	47	48	36	30	38	33	38	40	34	32	27	27	41	23	19	30	26	20	35	55	44	34	30	27	24	40		34.8	
WILMINGTON PORTER RES	24	MAX	48	46	56	70	66	53	52	48	54	58	64	65	44	38	39	42	47	41	31	47	33	43	55	68	68	48	38	38	40	56		49.9	
		MIN	42	39	37	44	48	46	37	32	40	37	37	43	33	27	28	28	39	22	19	26	25	22	22	54	43	32	29	25	25	37		33.9	
SOUTHERN 02																																			
DOVER	16	MAX	51	50	59	70	69	64	62	51	58	63	68	69	60	44	44	46	56	56	34	52	50	48	59	71	68	52	46	40	43	60		55.4	

MARYLAND AND DELAWARE
201411

DAILY TEMPERATURES (°F)

STATION	OB. TIME	MAX/MIN	DAY OF MONTH																															AVERAGE
			01	02	03	04	05	06	07	08	09	10	11	12	13	14	15	16	17	18	19	20	21	22	23	24	25	26	27	28	29	30	31	
		MIN	45	41	35	40	50	50	44	32	43	36	40	54	36	33	29	25	43	25	20	28	27	22	34	52	52	35	31	28	26	40		36.5

SNOWFALL AND SNOW ON GROUND (INCHES)

STATION	DAY OF MONTH																														
	01	02	03	04	05	06	07	08	09	10	11	12	13	14	15	16	17	18	19	20	21	22	23	24	25	26	27	28	29	30	31
MARYLAND SOUTHERN EASTERN SHORE 01																															
ASSATEAGUE																															
PRINCESS ANNE																															
SALISBURY 2N																															
SALISBURY FAA AP																															
SNOW HILL 4 N																															
UPPER SOUTHERN 04																															
BALTIMORE WASH INTL AP													T													0.3	T				
BELTSVILLE																												1.0			
DALECARLIA RSVR																															
LAUREL 3 W																															
MARYLAND SCIENCE CENTER																															
NATL ARBORETUM DC																															
OXON HILL																															
UPPER MARLBORO 3 NNW																															
NORTHERN CENTRAL 06																															
ABERDEEN PHILLIPS FLD																															
BRIGHTON DAM																															
CONOWINGO DAM																															
CYLBURN																															
DAMASCUS 3 SSW																															
EMMITSBURG 2 SE																															
FREDERICK 2 NNE																															
MILLERS 4 NE																															

Snowfall: Includes snow and ice. Values for NWS stations (J index note) are Mid-Mid (LST).

Snow on ground: Includes snow, sleet, ice, and hail. Values for NWS stations (J index note) are observed at 12 UTC (GMT).

Water Equivalent: Given for NWS stations (J index note) only, when snow depth is 2 inches or more, and is measured at 18 UTC (GMT)

SNOWFALL AND SNOW ON GROUND (INCHES)

STATION		DAY OF MONTH																													
		01	02	03	04	05	06	07	08	09	10	11	12	13	14	15	16	17	18	19	20	21	22	23	24	25	26	27	28	29	30
SMITHSBURG 2NW APPALACHIAN MOUNTAIN 07	SN ON GND													1	T		T										5	3	3	2	T
	WTR EQUIV													0.1													0.7	0.5	0.5	0.5	
	SNOWFALL																														
CUMBERLAND 2	SNOWFALL	-	-	-	-	-	-	-	-	-	-	-	-	-	-	-	-	T	-	-	-	-	-	-	-	-	0.4	3.2	T	T	-
FROSTBURG 2	SN ON GND	-	-	-	-	-	-	-	-	-	-	-	-	-	-	-	-	T	-	-	-	-	-	-	-	-	-	2	1	1	-
	SNOWFALL	-	0.1	-	-	-	-	-	T	-	-	-	-	-	0.3	T	T	T	0.4	0.3	-	-	T	-	-	-	1.0	5.3	1.8	0.3	
	SN ON GND	-	T	-	-	-	-	-	-	-	-	-	-	-	T	T	T	-	T	T	T	T	T	-	-	-	1	5	6	5	4
SHARPSBURG 5 S WILLIAMSPORT	WTR EQUIV	-	-	-	-	-	-	-	-	-	-	-	-	-	-	-	-	-	-	-	-	-	-	-	-	-	-	-	0.5	-	-
	SNOWFALL	-	-	-	-	-	-	-	-	-	-	-	-	-	-	-	-	-	-	-	-	-	-	-	-	-	-	-	-	-	-
	SN ON GND	-	-	-	-	-	-	-	-	-	-	-	-	-	-	-	-	-	-	-	-	-	-	-	-	-	-	-	-	-	-
ALLEGHENY PLATEAU 08 OAKLAND 1 SE	WTR EQUIV	-	-	-	-	-	-	-	-	-	-	-	-	-	-	-	-	-	-	-	-	-	-	-	-	-	-	-	-	-	-
	SNOWFALL	-	-	-	-	-	-	-	-	-	-	-	-	-	-	-	-	-	-	-	-	-	-	-	-	-	-	-	-	-	-
	SN ON GND	-	-	-	-	-	-	-	-	-	-	-	-	-	-	-	-	-	-	-	-	-	-	-	-	-	-	-	-	-	-
SAVAGE RIVER DAM	SNOWFALL	-	-	-	-	-	-	-	-	-	-	-	-	-	1.5			0.5	1.0								0.5	4.8	2.5	1.6	
	SN ON GND	-	-	-	-	-	-	-	-	-	-	-	-	-	1				1									4	6	7	
	SNOWFALL	-	-	-	-	-	-	-	-	-	-	-	-	-	T	-	-	-	-	-	-	-	-	-	-	-	T	2.0	T	-	-
SINES DEEP CREEK	SN ON GND	-	-	-	-	-	-	-	-	-	-	-	-	-	T	-	-	-	-	-	-	-	-	-	-	-	T	2	2	2	1
	SNOWFALL	-	-	-	-	-	-	-	-	-	-	-	-	-	1.0	-	-	-	0.7	0.2	-	-	-	-	-	-	-	-	-	-	-
	SN ON GND	-	-	-	-	-	-	-	-	-	-	-	-	-	1	-	-	-	1	1	-	-	-	-	-	-	-	-	-	-	-
DELAWARE NORTHERN 01 WILMINGTON NEW CASTLE CO AP WILMINGTON PORTER RES	SNOWFALL																														
	SN ON GND																														
	SNOWFALL																														
	SN ON GND																														

Snowfall: Includes snow and ice. Values for NWS stations (J index note) are Mid-Mid (LST).

Snow on ground: Includes snow, sleet, ice, and hail. Values for NWS stations (J index note) are observed at 12 UTC (GMT).

Water Equivalent: Given for NWS stations (J index note) only, when snow depth is 2 inches or more, and is measured at 18 UTC (GMT)

PAN EVAPORATION AND WIND

STATION		DAY OF MONTH																															TOTAL OR AVERAGE			
		01	02	03	04	05	06	07	08	09	10	11	12	13	14	15	16	17	18	19	20	21	22	23	24	25	26	27	28	29	30	31				
MARYLAND UPPER SOUTHERN 04 BELTSVILLE	WIND	41	-	-	-	-	-	-	-	-	-	-	-	-	-	-	-	-	-	-	-	-	-	-	-	-	-	-	-	-	-	-	-	-	M	
	EVAP	0.06	-	-	-	-	-	-	-	-	-	-	-	-	-	-	-	-	-	-	-	-	-	-	-	-	-	-	-	-	-	-	-	-	M	
	MAX	-	-	-	-	-	-	-	-	-	-	-	-	-	-	-	-	-	-	-	-	-	-	-	-	-	-	-	-	-	-	-	-	-	58.0	
	MIN	48	-	-	-	-	-	-	-	-	-	-	-	-	-	-	-	-	-	-	-	-	-	-	-	-	-	-	-	-	-	-	-	-	48.0	
UPPER MARLBORO 3 NNW	WIND	-	-	-	-	-	-	-	-	-	-	-	-	-	-	-	-	-	-	-	-	-	-	-	-	-	-	-	-	-	-	-	-	-	M	
	EVAP	-	-	-	-	-	-	-	-	-	-	-	-	-	-	-	-	-	-	-	-	-	-	-	-	-	-	-	-	-	-	-	-	-	M	
	MAX	-	-	-	-	-	-	-	-	-	-	-	-	-	-	-	-	-	-	-	-	-	-	-	-	-	-	-	-	-	-	-	-	-	M	
	MIN	-	-	-	-	-	-	-	-	-	-	-	-	-	-	-	-	-	-	-	-	-	-	-	-	-	-	-	-	-	-	-	-	-	M	
ALLEGHENY PLATEAU 08 SAVAGE RIVER DAM	WIND	-	-	-	-	-	-	-	-	-	-	-	-	-	-	-	-	-	-	-	-	-	-	-	-	-	-	-	-	-	-	-	-	-	M	
	EVAP	-	-	-	-	-	-	-	-	-	-	-	-	-	-	-	-	-	-	-	-	-	-	-	-	-	-	-	-	-	-	-	-	-	M	
	MAX	-	-	-	-	-	-	-	-	-	-	-	-	-	-	-	-	-	-	-	-	-	-	-	-	-	-	-	-	-	-	-	-	-	-	M
	MIN	-	-	-	-	-	-	-	-	-	-	-	-	-	-	-	-	-	-	-	-	-	-	-	-	-	-	-	-	-	-	-	-	-	-	M

Evaporation: Is measured in hundreths of inches.

Wind: Is measured in miles.

Max and Min: The maximum and minimum temperatures (Fahrenheit) of the water in the evaporation pan.

STATION INDEX

STATION	INDEX NO.	DIVISION	COUNTY	LATITUDE	LONGITUDE	ELEVATION (IN FEET)	OBSERVATION TIME AND TABLES			
							LOCAL STD TIME			
							TEMP	PRECIP	EVAP	SPECIAL SEE (NOTES)
MARYLAND										
ABERDEEN PHILLIPS FLD	0015	06	HARFORD	39 28	76 10W	57	07	07		CH
ASSATEAGUE	0335	01	WORCESTER	38 4	75 13W	10	VAR	VAR		H
BALTIMORE WASH INTL AP R	0465	04	ANNE ARUNDEL	39 10	76 41W	156	24	24		HJ
BELTSVILLE	0700	04	PRINCE GEORGE'S	39 2	76 56W	145	08	08	08	CH
BRIGHTON DAM	1125	06	MONTGOMERY	39 11	77 0W	330	08	08		H
CONOWINGO DAM	2060	06	HARFORD	39 39	76 11W	40	07	07		H
CUMBERLAND 2	2282	07	ALLEGANY	39 39	78 45W	730	18	18		H
CYLBURN	2308	06	BALTIMORE	39 21	76 39W	235	08	08		H
DALECARLIA RSVR	2325	04	DISTRICT OF COLUMBIA	38 56	77 7W	150	08	08		H
DAMASCUS 3 SSW	2336	06	MONTGOMERY	39 16	77 14W	700	22	22		H
EMMITSBURG 2 SE	2906	06	FREDERICK	39 41	77 17W	403	07	07		H
FREDERICK 2 NNE	3353	06	FREDERICK	39 26	77 24W	280	07	07		H
FROSTBURG 2	3415	07	ALLEGANY	39 40	78 56W	2170	07	07		H
LAUREL 3 W	5111	04	PRINCE GEORGE'S	39 5	76 54W	400	24	24		H
MARYLAND SCIENCE CENTER R	5718	04	BALTIMORE (CITY)	39 17	76 37W	20	24	24		H
MECHANICSVILLE 5 NE	5865	03	ST. MARY'S	38 28	76 42W	100	07	07		H
MILLERS 4 NE	5934	06	CARROLL	39 43	76 48W	860	18	18		CH
NATL ARBORETUM DC	6350	04	DISTRICT OF COLUMBIA	38 55	76 58W	50	07	07		H
OAKLAND 1 SE	6620	08	GARRETT	39 25	79 24W	2420	07	07		H
OXON HILL	6800	04	PRINCE GEORGE'S	38 47	76 60W	120	08	08		H
PRINCESS ANNE	7330	01	SOMERSET	38 13	75 41W	20	17	17		H
ROYAL OAK 2 SSW	7806	02	TALBOT	38 43	76 11W	10	17	17		H
SALISBURY 2N	8004	01	WICOMICO	38 24	75 36W	20	17	17		H
SALISBURY FAA AP	8005	01	WICOMICO	38 20	75 31W	48	24	24		H
SAVAGE RIVER DAM	8065	08	GARRETT	39 31	79 8W	1495	08	08	08	CH
SHARPSBURG 5 S	8207	07	WASHINGTON	39 24	77 43W	500	07	07		H
SINES DEEP CREEK	8315	08	GARRETT	39 31	79 25W	2040	07	07		H
SMITHSBURG 2NW	8371	06	WASHINGTON	39 40	77 35W	670	08	08		H
SNOW HILL 4 N	8380	01	WORCESTER	38 14	75 23W	30	17	17		H
SOLOMONS	8405	03	CALVERT	38 19	76 27W	12	08	08		H
UPPER MARLBORO 3 NNW	9070	04	PRINCE GEORGE'S	38 51	76 46W	130	08	08	08	H
WILLIAMSPORT	9570	07	WASHINGTON	39 37	77 51W	360	06	06		H
DELAWARE										
DOVER	2730	02	KENT	39 9	75 30W	30	16	16		H
MILTON 1SE	6104	02	SUSSEX	38 46	75 17W	33	07	07		H
WILMINGTON NEW CASTLE CO AP R	9595	01	NEW CASTLE	39 40	75 36W	79	24	24		HJ
WILMINGTON PORTER RES	9605	01	NEW CASTLE	39 46	75 32W	270	24	24		H

REFERENCE NOTES

STATION NAMES: Name of the city, town or locality. Figures and letters following the station names indicate the distance in miles and direction from the post office or town community center.

DIVISIONS: Areas within a state of similar climatological characteristics. Division averages are calculated using data from stations that record temperature and/or precipitation. Station Precipitation totals flagged with an 'F' or 'M' are excluded from the Divisional Average calculations of precipitation. Stations with monthly Temperature averages flagged with an 'F' or 'M' are included in the Divisional Average if there are no more than 9 flagged or missing daily values in the month, else they are excluded from the divisional average for temperature.

NORMALS: The average value of the meteorological element over a time period. Effective 1 January 2012, the averaging period is 1981 to 2010. The normals for National Weather Service localities have been adjusted so as to be representative for the current observation site.

MONTHLY DEGREE DAY TOTALS: One heating (cooling) degree day is accumulated for each whole degree that the daily mean temperature is below (above) 65 degrees Fahrenheit.

PRECIPITATION: Values shown in hundredths of inches are water equivalent totals, i.e., total of liquid and melted frozen precipitation. In the "Monthly Summarized Data" table the total snow and sleet values shown in tenths of inches are unmelted amounts. The max depth on ground values of snow and sleet shown in whole inches are cumulative unmelted amounts. The number of days with .10, .50, 1.00 or more refers to water equivalents.

PRECIPITATION QUALITY CONTROL: The NCDC quality control process may flag precipitation data that are spatially inconsistent, exceed climatological limits, or are inconsistent with prevailing weather patterns.

TEMPERATURE: Original temperature values are given in the "Daily Temperature" table. Summary temperature information (averages, departures, extremes, monthly degree day totals) is based on the values labeled MAX/MIN.

WIND: (As shown in the "Evaporation and Wind" table) the total wind movement in miles over the evaporation pan as determined by an anemometer recorder located 6-8 inches above the pan.

SYMBOLS AND LETTERS USED IN THE STATION INDEX TABLE

- C Station is equipped with recording rain gage (R) but values in this bulletin are from a non-recording rain gage unless indicated by an R.
- G Observations appear in the "Soil Temperatures" table.
- H Observations appear in the "Snowfall and Snow on the Ground" table.
- J Station also published as a Local Climatological Data publication.
- VAR Observation time varies.
- SR / SS Observation time near sunrise / Observation time near sunset, respectively.

SYMBOLS AND LETTERS USED IN THE DATA TABLES

(DAILY DATA ARE FOR THE 24 HOURS IMMEDIATELY PRECEDING OBSERVATION TIME.)
BLANK Entries in the "Monthly Summarized Data" table indicate no record.
BLANK Entries in the "Daily Precipitation" and "Snowfall and Snow on the Ground" tables indicate zero.
BLANK Entries in the "Daily Temperature" table indicate a missing record

- No record. Data not recorded or not received in time for publication.
- + Precipitation or temperature extremes occurred on one or more previous dates during the month.
- * Rain gage not read. Precipitation is included in the amount following the asterisks.
Time distribution may not be known. A * preceding the monthly total indicates precipitation amount is being carried forward to next month's total, and may include amounts from the previous month(s).
- a As a subscript, indicates accumulated total.
- A Amount of precipitation is the total of observer's entries for the current month. It may include precipitation that occurred during the previous month. Refer to earlier bulletin to determine date of last

reading. (Hawaii stations)

B Divisional Departure from normals are computed using 1981-2010 normals.

E Normalized HDD/CDD Calculation. E is appended to the HDD/CDD Calculation when 1-9 individual daily TMAX and/or TMIN values are missing and a Normalized HDD/CDD Calculation is provided. M appears alone if 10 or more daily values are missing.

F Monthly calculation flagged value. F is appended to average and/or total values computed which exclude one or more daily data values that have been flagged by the GHCN-Daily Dataset

M Insufficient or partial data. M is appended to average and/or total values computed with 1-9 daily values missing. M appears alone if 10 or more daily values are missing, (8 or more for wind and evaporation).

N Indicates snow fall or Snowdepth totals are computed with one or more missing days.

R Amounts from recording rain gage.

T Trace. An amount too small to measure.

SEASONAL TABLES: Monthly and seasonal snowfall and heating degree days for the 12 months ending with the June data are published in the July issue of this bulletin. Cooling degree days for the calendar year are published in the "Climatological Data Annual Summary."

Information concerning the history of changes in locations, exposure, etc. of substations is kept on file at the National Climatic Data Center. Historical information of regular National Weather Service Offices may be obtained from the "Local Climatological Data" annual publication. The contents of this publication may be reprinted or otherwise used freely, with proper credit to the National Climatic Data Center. The data are also available digitally.

Effective with the January 2011 Data-Month, COOP Observer Names are no longer included in the Monthly and Annual Climatological Data Publications. This information is not published to ensure the privacy of personal information pursuant to Section 208 of the E-Government Act of 2002 (44 USC 3601).

As of the 2011 Data-Year, Station and Climate Division Maps are no longer being included in the CD Publications. NCDC's Product Development Branch provides updated Station Maps for various data networks via the Historical Observing Metadata Repository: <http://www.ncdc.noaa.gov/homr>.

The GHCN-Daily Quality Control Flags shown below are displayed as superscripts with the data. For more Information on Global Historical Climatology Network - Daily and flags, see: <http://www.ncdc.noaa.gov/oa/climate/ghcn-daily/> and Comprehensive Automated Quality Assurance of Daily Surface Observations. Durre, Imke, Matthew J. Menne, Byron E. Gleason, Tamara G. Houston, Russell S. Vose, 2010: J. Appl. Meteor. Climatol., 49, 1615-1633. doi: 10.1175/2010JAMC2375.1

Blank = Passed All checks	N = failed naught check
D = failed duplicate check	O = failed climatological outlier check
G = failed gap check	R = failed lagged range check
I = failed internal consistency check	S = failed spatial consistency check
K = failed streak/frequent-value check	T = failed temporal consistency check
L = failed check on length of multiday period	W = temperature too warm for snow
M = failed megaconsistency check	X = failed bounds check
	Z = flagged as a result of an official Datzilla investigation

Beginning with the January 2013 CD Publication, monthly mean temperature calculations have changed to the National Data Stewardship Team standard. Monthly maximum and minimum temperatures are not rounded until after the monthly mean temperature is calculated. This is the most accurate outcome, but may be slightly different from the mean derived from rounded monthly maximum and minimum.

Processing Updates and Errata: The CD Publications are periodically reproduced to include the addition of late reports and reported corrections. The GHCND data version noted on the cover of the publication provides the generation date.

The climate division temperature and precipitation values in this publication are based on simple averages from the current set of NWS-Designated Open and Published COOP and First Order Sites within each division. These values differ from those found in NCDC's nClimDiv product. Beginning in February 2014, the nClimDiv product is used by NCDC's Climate Monitoring Branch and in its monthly climate reports. For more details on nClimDiv, please go to <http://www.ncdc.noaa.gov/monitoring-references/maps/us-climate-divisions.php>.

NOAA\National Climatic Data Center
Attn: User Engagement & Services Branch
151 Patton Avenue
Asheville, NC 28801-5001

Customer Services Number: (828) 271-4800, option 2
TDD : (828) 271-4010
Fax number: (828) 271-4876

NCDC now offers free online access to the *Climatological Data* publication.
Go to : www.ncdc.noaa.gov and choose Most Popular.