



CLIMATOLOGICAL DATA ANNUAL SUMMARY MARYLAND AND DELAWARE

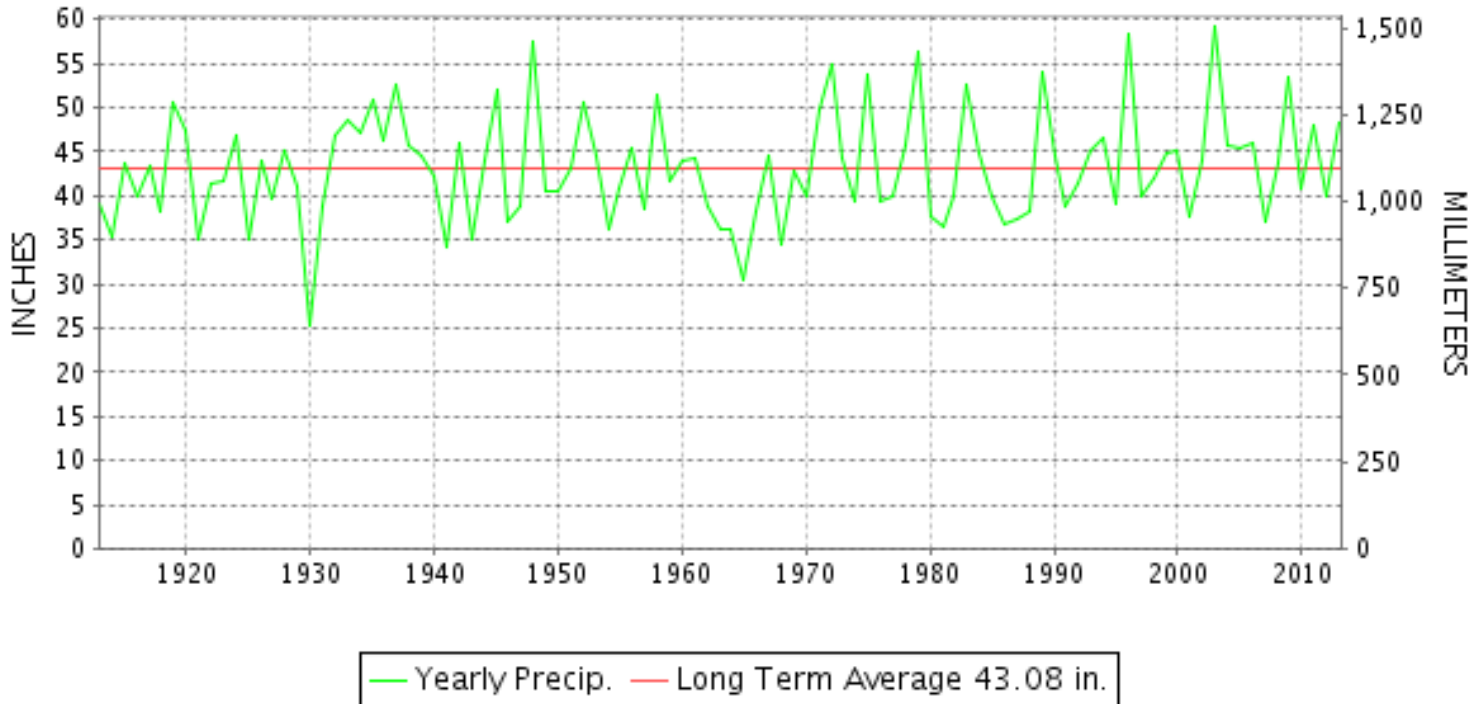
2013

VOLUME 117 NUMBER 13

ISSN 0145-0549

GHCND Ver: 3.12-upd-2014052705

YEARLY TOTAL PRECIPITATION



MARYLAND AND DELAWARE PRECIPITATION 1913-2013

"I certify that this is an official publication of the National Oceanic and Atmospheric Administration (NOAA) It is compiled using information from weather observing sites supervised by NOAA/National Weather Service and received at the National Climatic Data Center (NCDC), Asheville, North Carolina 28801."

DIRECTOR
NATIONAL CLIMATIC DATA CENTER

noaa

National
Oceanic and
Atmospheric Administration

National
Environmental Satellite, Data
and Information Service

National
Climatic Data Center
Asheville, North Carolina

TOTAL PRECIPITATION AND DEPARTURE FROM NORMAL (INCHES)

MARYLAND AND DELAWARE
2013

STATION	JAN		FEB		MAR		APR		MAY		JUN	
	PRECIP.	DEPART.	PRECIP.	DEPART.	PRECIP.	DEPART.	PRECIP.	DEPART.	PRECIP.	DEPART.	PRECIP.	DEPART.
MARYLAND												
SOUTHERN EASTERN SHORE 01												
ASSATEAGUE	M		M		M		M		M		M	
PRINCESS ANNE	M 2.96	-0.62	M 3.50	0.59	M		M		M		MA 5.95	2.42
SALISBURY 2N	3.53		4.10		5.17		4.53		2.93		8.96	
SALISBURY FAA AP	3.00	-0.61	3.70	0.35	4.85	0.43	3.78	0.23	3.32	-0.30	9.92	6.21
SNOW HILL 4 N	2.76	-0.81	4.43	1.29	5.71	1.19	M 3.85	0.37	3.59	0.07	6.45	2.98
--DIVISIONAL DATA----->	3.10	-0.90	4.08	0.66	5.24	0.76	4.16	0.90	3.28	-0.34	8.44	5.06
CENTRAL EASTERN SHORE 02												
ROYAL OAK 2 SSW	2.73		2.45		3.49		3.89		3.00		9.23	
--DIVISIONAL DATA----->	2.73	-1.25	2.45	-0.86	3.49	-0.80	3.89	0.50	3.00	-0.91	9.23	5.68
LOWER SOUTHERN 03												
MECHANICSVILLE 5 NE	3.03		2.20		3.96		4.49		2.52		7.09	
SOLOMONS	3.64		1.70		3.25		4.50		MA 2.59		7.12	
--DIVISIONAL DATA----->	3.34	-0.38	1.95	-1.07	3.61	-0.70	4.50	1.30	2.52	-1.62	7.11	3.33
UPPER SOUTHERN 04												
BALTIMORE WASH INTL AP	3.64		1.95		2.64		2.20		3.43		7.81	
BELTSVILLE	2.71	-0.15	1.74	-0.86	2.31	-1.37	2.00	-1.35	3.66	-0.66	7.60	3.90
DALECARLIA RSVR	3.33	0.31	3.31	0.28	3.38	-0.62	1.97	-1.69	3.83	-0.61	8.40	4.19
LAUREL 3 W	4.38	1.22	1.34	-1.69	3.04	-1.06	2.77	-1.04	3.89	-0.67	5.76	1.53
MARYLAND SCIENCE CENTER	3.90	0.98	1.95	-0.65	2.27	-1.59	2.21	-1.01	3.83	0.34	8.68	5.41
NATL ARBORETUM DC	2.60	-0.49	1.68	-1.22	2.67	-1.05	M 2.89	-0.62	2.15	-2.13	8.76	4.68
OXON HILL	2.61	-0.41	2.00	-0.93	2.95	-0.83	2.84	-0.56	2.47	-1.89	10.92	6.56
UPPER MARLBORO 3 NNW	2.70	-0.18	1.68	-1.04	2.99	-0.77	2.77	-0.78	2.40	-1.92	9.05	4.98
--DIVISIONAL DATA----->	3.23	-0.32	1.96	-0.96	2.78	-1.24	2.39	-0.95	3.21	-1.23	8.37	4.71
NORTHERN CENTRAL 06												
ABERDEEN PHILLIPS FLD	3.30		1.77		2.94		2.60		2.67		9.44	
BRIGHTON DAM	FA 0.94		2.37		2.74		2.89		4.58		8.03	
CONOWINGO DAM	6.17	2.73	1.94	-0.91	3.11	-1.14	2.30	-1.63	3.89	-0.07	8.74	4.56
CYLBURN	MA 5.99		MA 2.25		MA 2.28		2.82		3.80		MA 7.69	
DAMASCUS 3 SSW	5.57	2.20	2.01	-1.16	M 2.84	-0.85	2.47	-1.16	5.18	1.01	9.93	5.79
EMMITSBURG 2 SE	3.84	0.66	2.05	-0.65	2.40	-1.65	1.76	-2.15	3.03	-1.31	3.86	-0.06
FREDERICK 2 NNE	5.55	2.56	2.16	-0.66	M		M		M		M	
MILLERS 4 NE	5.32	2.11	2.04	-1.15	3.24	-0.48	2.51	-1.20	2.88	-1.38	5.64	2.25
SMITHSBURG 2NW	MA 2.61	-0.05	M		M		M		M		M	
WESTMINSTER	5.40	2.52	MA 1.54	-0.95	MA 2.66	-0.93	MA 2.79	-0.71	2.32	-1.83	MA 4.47	0.55
--DIVISIONAL DATA----->	5.02	1.42	2.05	-0.87	2.89	-1.14	2.48	-1.05	3.54	-1.08	7.61	3.56
APPALACHIAN MOUNTAIN 07												
CUMBERLAND 2	2.71		1.52		1.99		2.61		2.77		3.96	
FROSTBURG 2	3.09	-0.23	2.00	-1.12	3.05	-0.89	3.27	-0.60	4.23	-0.65	4.22	0.22
SHARPSBURG 5 S	3.97	1.09	1.77	-0.79	M 2.52	-1.15	2.15	-1.47	3.39	-0.77	3.83	-0.05
WILLIAMSPORT	MA 2.82	-0.18	1.41	-0.56	1.43	-2.80	M 2.51	-0.69	2.68	-1.47	4.13	0.35
--DIVISIONAL DATA----->	3.26	0.16	1.68	-0.94	2.16	-1.26	2.68	-0.71	3.27	-0.94	4.04	0.52

TOTAL PRECIPITATION AND DEPARTURE FROM NORMAL (INCHES)

MARYLAND AND DELAWARE
2013

STATION	JUL		AUG		SEP		OCT		NOV		DEC		ANNUAL	
	PRECIP.	DEPART.	PRECIP.	DEPART.	PRECIP.	DEPART.	PRECIP.	DEPART.	PRECIP.	DEPART.	PRECIP.	DEPART.	PRECIP.	DEPART.
MARYLAND														
SOUTHERN EASTERN SHORE 01														
ASSATEAGUE	M		M		M		M		M		M			
PRINCESS ANNE	M		M 4.76	0.10	M		MA 6.42	3.12	M		M			
SALISBURY 2N	M		6.26		1.35		6.28		2.94		6.11			
SALISBURY FAA AP	3.81	-0.57	7.30	2.87	0.77	-3.21	3.68	0.19	1.48	-1.95	3.18	-0.53	48.79	1.75
SNOW HILL 4 N	5.32	0.93	5.42	0.52	1.38	-3.02	4.81	1.28	2.79	-0.73	4.38	0.71	M 50.89	4.71
--DIVISIONAL DATA----->	4.57	0.26	6.33	1.59	1.17	-2.59	4.92	1.55	2.40	-0.78	4.56	1.16	52.25	7.33
CENTRAL EASTERN SHORE 02														
ROYAL OAK 2 SSW	3.32		2.84		2.43		3.33		3.32		5.33		45.36	-0.51
--DIVISIONAL DATA----->	3.32	-0.87	2.84	-1.42	2.43	-1.39	3.33	0.09	3.32	0.03	5.33	1.84	45.36	0.64
LOWER SOUTHERN 03														
MECHANICSVILLE 5 NE	3.06		6.99		0.89		4.74		3.37		5.66		48.00	0.48
SOLOMONS	MA 8.11		MA 3.94		1.15		4.63		2.86		5.43		M 48.92	
--DIVISIONAL DATA----->	3.06	-1.16	6.99	2.86	1.02	-3.15	4.69	1.21	3.12	-0.15	5.55	2.24	47.46	2.71
UPPER SOUTHERN 04														
BALTIMORE WASH INTL AP	2.77		1.13		1.65		7.62		2.82		5.27		42.93	0.99
BELTSVILLE	2.95	-0.99	3.14	-0.13	1.94	-2.14	MA 5.38	1.71	2.80	-0.44	4.97	1.84	M 41.20	-2.56
DALECARLIA RSVR	6.44	1.85	M 2.80	-1.06	2.01	-2.16	M 7.91	4.07	2.90	-0.72	6.80	3.58	M 53.08	7.97
LAUREL 3 W	3.18	-0.87	1.96	-1.47	1.73	-2.87	5.69	1.71	2.01	-2.20	5.28	1.51	M 41.03	-5.37
MARYLAND SCIENCE CENTER	3.47	-1.15	1.67	-1.72	1.67	-2.42	4.69	1.64	2.62	-0.35	5.06	1.65	42.02	
NATL ARBORETUM DC	3.30	-1.02	M 2.51	-0.90	1.65	-2.11	6.49	2.70	2.99	-0.48	MA 4.91	1.71	M 42.60	-1.10
OXON HILL	4.50	0.15	2.08	-1.54	1.38	-2.75	6.04	2.32	2.87	-0.73	5.56	2.29	46.22	
UPPER MARLBORO 3 NNW	7.74	3.72	2.43	-1.29	2.73	-1.26	7.33	3.73	M 2.73	-0.74	4.78	1.64	M 49.33	5.64
--DIVISIONAL DATA----->	4.29	0.15	2.07	-1.88	1.85	-2.33	6.31	2.83	2.72	-0.66	5.39	2.00	44.57	0.12
NORTHERN CENTRAL 06														
ABERDEEN PHILLIPS FLD	6.41		6.68		2.32		4.97		3.21		5.45		51.76	7.54
BRIGHTON DAM	4.04		2.63		0.92		6.35		2.99		5.16		43.64	-1.04
CONOWINGO DAM	8.41	4.12	7.38	3.47	1.14	-3.81	5.05	0.93	2.88	-0.66	2.94	-1.09	53.95	5.86
CYLBURN	4.96		3.13		1.57		5.88		2.58		M 5.54		M 48.49	
DAMASCUS 3 SSW	3.84	-0.28	M 2.10	-2.19	1.36	-3.15	7.50	3.78	2.76	-1.16	5.65	2.02	M 51.21	
EMMITSBURG 2 SE	2.83	-0.82	2.35	-1.05	1.17	-3.07	6.51	3.13	2.79	-0.82	5.15	1.82	37.74	-7.60
FREDERICK 2 NNE	M		M		M		M		M		M			
MILLERS 4 NE	4.73	0.74	5.33	1.61	1.58	-2.89	8.05	4.30	2.88	-0.71	5.66	2.02	49.86	6.19
SMITHSBURG 2NW	M		M		M		M		M		FA 4.35	1.00		
WESTMINSTER	M		M		M		M		M		M			
--DIVISIONAL DATA----->	5.03	1.07	4.58	0.74	1.44	-2.89	6.33	2.82	2.87	-0.75	5.00	1.50	48.84	3.33
APPALACHIAN MOUNTAIN 07														
CUMBERLAND 2	2.33		5.07		0.79		2.36		1.92		3.59		31.62	-5.59
FROSTBURG 2	3.89	-0.11	5.64	2.04	3.01	-0.67	3.25	0.21	1.91	-1.76	4.13	0.84	41.69	-2.87
SHARPSBURG 5 S	2.88	-1.22	M 3.60	0.37	0.73	-3.27	6.35	2.94	2.58	-0.82	M 5.74	2.59	M 39.51	
WILLIAMSPORT	3.27	-0.63	2.86	-0.06	2.15	-1.71	7.67	4.61	M 2.13	-1.29	4.87	1.77	M 37.93	
--DIVISIONAL DATA----->	3.09	-0.55	4.52	1.07	1.67	-1.82	4.91	1.83	2.14	-1.13	4.20	1.33	37.62	-2.44

TOTAL PRECIPITATION AND DEPARTURE FROM NORMAL (INCHES)

MARYLAND AND DELAWARE
2013

STATION	JAN		FEB		MAR		APR		MAY		JUN	
	PRECIP.	DEPART.	PRECIP.	DEPART.	PRECIP.	DEPART.	PRECIP.	DEPART.	PRECIP.	DEPART.	PRECIP.	DEPART.
ALLEGHENY PLATEAU 08												
OAKLAND 1 SE	3.38		3.88		5.38		3.38		5.80		6.37	
SAVAGE RIVER DAM	M 2.36	-0.39	M 1.13	-1.30	M 1.86	-1.54	M 2.44	-0.89	M 4.04	-0.48	M 3.88	-0.02
SINES DEEP CREEK	M 4.10		3.35		M 4.06		M 3.05		4.47		4.98	
--DIVISIONAL DATA----->	3.38	-0.17	3.62	0.53	5.38	1.51	3.38	-0.46	5.14	0.60	5.68	1.47
DELAWARE												
NORTHERN 01												
BEAR 2 SW	M		M		M		M		M		M	
WILMINGTON NEW CASTLE CO AP	3.70	0.69	2.31	-0.37	2.54	-1.38	2.69	-0.81	2.16	-1.79	13.66	9.78
WILMINGTON PORTER RES	4.01	0.30	1.84	-1.15	2.40	-2.12	1.62	-2.59	3.05	-1.33	12.23	8.04
--DIVISIONAL DATA----->	3.86	0.16	2.08	-0.76	2.47	-1.64	2.16	-1.47	2.61	-1.81	12.95	9.05
SOUTHERN 02												
DOVER	2.39		2.39		2.71		4.24		4.00		M 9.41	
--DIVISIONAL DATA----->	2.39	-1.60	2.39	-0.79	2.71	-1.69	4.24	0.77	4.00	-0.12	M	M

TOTAL PRECIPITATION AND DEPARTURE FROM NORMAL (INCHES)

MARYLAND AND DELAWARE
2013

STATION	JUL		AUG		SEP		OCT		NOV		DEC		ANNUAL	
	PRECIP.	DEPART.	PRECIP.	DEPART.	PRECIP.	DEPART.	PRECIP.	DEPART.	PRECIP.	DEPART.	PRECIP.	DEPART.	PRECIP.	DEPART.
ALLEGHENY PLATEAU 08														
OAKLAND 1 SE	4.66		8.49		0.83		1.76		M 2.43		5.28		M 51.64	4.08
SAVAGE RIVER DAM	M 4.77	0.45	M		M		M 0.89	-1.77	M 1.37	-1.63	M 3.89	1.09		
SINES DEEP CREEK	M 5.65		9.67		M 1.22		M 2.05		2.89		5.58		M 51.07	
--DIVISIONAL DATA----->	4.66	-0.21	9.08	5.17	0.83	-2.77	1.76	-1.27	2.89	-0.67	5.43	1.85	51.23	5.58
DELAWARE														
NORTHERN 01														
BEAR 2 SW	M		M		M		M		M		M			
WILMINGTON NEW CASTLE CO AP	4.05	-0.52	5.22	1.97	1.92	-2.40	1.97	-1.45	2.91	-0.19	5.22	1.74	48.35	5.54
WILMINGTON PORTER RES	M 4.49	-0.87	4.55	0.88	2.15	-2.75	3.45	-0.36	2.03	-1.45	4.69	0.59	M 46.51	
--DIVISIONAL DATA----->	4.05	-0.45	4.89	1.17	2.04	-2.28	2.71	-0.65	2.47	-0.91	4.96	1.34	47.25	1.75
SOUTHERN 02														
DOVER	MA 9.05		4.29		0.66		5.80		2.36		5.28		M 52.58	6.30
--DIVISIONAL DATA----->	M	M	4.29	-0.60	0.66	-3.49	5.80	2.42	2.36	-0.93	5.28	1.74		-4.29

AVERAGE TEMPERATURES AND DEPARTURES FROM NORMAL(°F)

MARYLAND AND DELAWARE
2013

STATION	JAN		FEB		MAR		APR		MAY		JUN		JUL		AUG		SEP		OCT		NOV		DEC		ANNUAL			
	TEMPERATURE	DEPARTURE.	TEMPERATURE	DEPARTURE.	TEMPERATURE	DEPARTURE.	TEMPERATURE	DEPARTURE.	TEMPERATURE	DEPARTURE.	TEMPERATURE	DEPARTURE.	TEMPERATURE	DEPARTURE.	TEMPERATURE	DEPARTURE.	TEMPERATURE	DEPARTURE.	TEMPERATURE	DEPARTURE.	TEMPERATURE	DEPARTURE.	TEMPERATURE	DEPARTURE.	TEMPERATURE	DEPARTURE.		
MARYLAND																												
SOUTHERN EASTERN SHORE 01																												
ASSATEAGUE	M		M		M		M		M		M		M		M		M		M		M		M		M		M	
PRINCESS ANNE	41.8M	5.5	41.9M	3.4	MM		MM		MM		MM		MM		76.3M	1.5	MM		MM		MM		MM		MM		MM	
SALISBURY 2N	39.8		38.4		41.9		56.7		65.1		74.3		M		73.7		68.0		61.2		46.7		43.1		55.4			
SALISBURY FAA AP	40.1	4.4	39.3	1.4	42.3	-3.2	57.2	2.9	65.8	2.4	75.9	3.7	81.0	3.7	75.4	-0.1	69.5	0.4	62.4	4.8	47.8	-0.8	43.3	3.3	58.3	1.9		
SNOW HILL 4 N	39.7	2.7	38.7	-0.3	41.7	-4.8	56.3M	0.8	65.4	0.6	74.9	2.0	79.9	2.9	74.1	-1.2	68.5F	-1.1	61.2	2.8	46.9	-2.5	43.3	2.3	57.6	0.4		
--DIVISIONAL DATA----->	40.4	4.4	39.6	1.8	42.0	-3.3	56.7	2.6	65.4	2.2	75.0	3.2	80.5	3.8	74.9	-0.4	68.7	-0.6	61.6	3.3	47.1	-1.7	43.2	2.9	57.9	18.2		
CENTRAL EASTERN SHORE 02																												
ROYAL OAK 2 SSW	39.0		37.2		42.4		55.8		64.7		74.5		80.6		74.2		67.2		59.6		46.2		40.7		56.8		-1.1	
--DIVISIONAL DATA----->	39.0	4.2	37.2	0.3	42.4	-2.9	55.8	1.3	64.7	0.4	74.5	1.6	80.6	2.9	74.2	-1.7	67.2	-2.0	59.6	1.4	46.2	-1.9	40.7	1.4	56.8	5.0		
LOWER SOUTHERN 03																												
MECHANICSVILLE 5 NE	36.5		35.2		39.6		54.4		63.0		72.0		77.1		70.9		64.7		57.2		43.3		39.4		54.4		-1.8	
SOLOMONS	39.8		37.4		41.2		56.4		65.4M		76.1		80.6		75.5		70.4M		61.3M		48.2M		42.7M		57.9			
--DIVISIONAL DATA----->	38.2	4.2	36.3	-0.6	40.4	-4.8	55.4	1.2	64.2	0.8	74.1	2.4	78.9	2.6	73.2	-1.5	67.6	-0.5	59.3	2.4	45.8	-1.5	41.1	2.3	56.2	7.0		
UPPER SOUTHERN 04																												
BALTIMORE WASH INTL AP	36.9		35.0		40.6		55.3		63.7		73.9		79.0		74.2		67.7		58.8		43.6		39.6		55.7		1.1	
BELTSVILLE	36.4	3.8	34.5	-0.9	40.4	-3.4	55.1	1.8	63.0	0.0	73.7	1.6	78.3	1.4	73.5	-1.8	67.3	-1.1	MM		43.3	-3.4	39.0	1.7	55.0	-0.1		
DALECARLIA RSVR	37.5	3.5	35.7	-1.7	41.1	-4.6	56.6	1.0	62.9	-2.0	73.9	0.7	79.3	1.7	73.8M	-2.4	67.2M	-2.1	58.8M	1.5	44.3	-2.9	39.5M	1.3	55.9	-0.5		
LAUREL 3 W	37.6	4.5	35.2	-1.1	41.0	-3.9	56.4	1.5	64.4	-0.2	74.4	1.6	79.7	1.9	75.1	-1.4	69.4	0.3	60.4	2.8	44.3	-3.2	39.5	1.7	56.5	0.4		
MARYLAND SCIENCE CENTER	41.5		39.7		45.5		60.3		68.8		78.7		83.4		79.1		72.9		64.0		48.3		43.2M		60.5			
NATL ARBORETUM DC	38.1	4.6	36.8	0.6	42.7M	-1.7	57.5M	3.4	65.6F	1.5	76.1M	3.0	81.0	3.1	75.7M	-0.4	69.7	1.0	61.0	4.4	45.5	-1.4	42.3M	4.3	57.7	1.9		
OXON HILL	37.8		35.8		41.6		56.4		64.1		74.4		79.2		74.0		68.4		59.5		44.5		40.3		56.3			
UPPER MARLBORO 3 NNW	37.1	4.6	34.9	-0.5	40.4	-3.4	55.3	1.9	63.1	0.4	74.0	2.7	78.3	2.4	73.1M	-1.0	67.3	0.1	58.4	3.1	45.1M	-1.2	39.7	2.7	55.6	1.0		
--DIVISIONAL DATA----->	37.9	4.6	36.0	-0.3	41.7	-2.8	56.6	2.5	64.5	0.9	74.9	2.6	79.8	2.7	74.8	-0.6	68.7	0.4	60.1	3.7	44.9	-1.8	40.4	2.8	56.7	14.7		
NORTHERN CENTRAL 06																												
ABERDEEN PHILLIPS FLD	35.2		33.7		39.9		53.5		63.6M		73.6		78.5		73.0		66.2		58.4		43.8		38.1		54.8		-1.1	
BRIGHTON DAM	M		M		40.0M		53.2		60.6		71.4		76.1		71.1		64.6M		56.2		42.0M		36.8M		M			
CONOWINGO DAM	32.6	1.7	M		37.4	-5.0	51.4	-1.0	60.6	-2.0	71.2	-0.3	76.5	0.3	70.8	-4.0	64.3	-3.4	56.7	1.1	40.9	-4.0	34.1	-1.7	54.2	0.2		
CYLBURN	35.4		33.4		39.4		54.4		61.5		72.2		76.7		72.0		65.6		57.3		43.1		MM		55.5			
DAMASCUS 3 SSW	35.2		32.7		37.7M		53.8		61.9		70.7		75.4		70.5M		64.6		56.5		41.4		37.1		53.1			
EMMITSBURG 2 SE	33.6	2.6	31.9	-2.2	38.5	-4.5	52.0	-0.8	59.7	-2.5	70.6	0.1	75.8M	0.8	70.9	-2.4	63.7	-2.7	56.3	1.4	41.8	-3.0	35.7	-0.2	52.5	-1.2		
FREDERICK 2 NNE	35.4		33.4		MM		M		M		M		M		M		M		M		M		M		M			
MILLERS 4 NE	34.3	3.9	32.0	-1.4	38.2	-3.5	53.5	1.7	61.9	0.6	70.5	0.8	75.6	1.7	70.5	-2.0	64.0	-1.6	56.1	1.1	41.4	-3.4	35.6	0.2	52.8	-0.2		
SMITHSBURG 2NW	32.1M		MM		M		M		M		M		M		M		M		M		M		32.9M		M			
WESTMINSTER	MM		MM		MM		MM		MM		MM		MM		MM		M		M		M		M		M			
--DIVISIONAL DATA----->	34.2	3.0	32.9	-1.1	38.7	-4.0	53.1	0.8	61.4	-0.9	71.5	0.8	76.4	1.1	71.3	-2.2	64.7	-1.9	56.8	1.5	42.1	-2.8	35.8	0.0	53.2	-5.7		
APPALACHIAN MOUNTAIN 07																												
CUMBERLAND 2	34.0		32.4		38.5		55.2		62.4		72.6		77.8		72.9		65.7		57.0		41.5		36.6		53.9		0.8	
FROSTBURG 2	29.4	4.9	25.4	-1.9	31.2	-4.1	48.7	2.8	56.6	0.4	66.3	2.1	69.9M	1.4	65.7	-1.5	59.9	-0.4	51.8	2.5	35.2	-3.9	31.7	2.2	47.7	0.4		
SHARPSBURG 5 S	34.3		32.2		37.0		52.4		59.8M		70.8		75.8		70.1		63.8		55.4		40.1M		35.0M		52.2			
WILLIAMSPORT	33.4M		32.2M		38.9M		53.3M		60.7M		72.4M		76.0M		71.8M		65.8		57.0		42.0M		36.4		53.3			

AVERAGE TEMPERATURES AND DEPARTURES FROM NORMAL(°F)

MARYLAND AND DELAWARE
2013

STATION	JAN		FEB		MAR		APR		MAY		JUN		JUL		AUG		SEP		OCT		NOV		DEC		ANNUAL	
	TEMPERATURE	DEPARTURE.	TEMPERATURE	DEPARTURE.	TEMPERATURE	DEPARTURE.	TEMPERATURE	DEPARTURE.	TEMPERATURE	DEPARTURE.	TEMPERATURE	DEPARTURE.	TEMPERATURE	DEPARTURE.	TEMPERATURE	DEPARTURE.	TEMPERATURE	DEPARTURE.	TEMPERATURE	DEPARTURE.	TEMPERATURE	DEPARTURE.	TEMPERATURE	DEPARTURE.	TEMPERATURE	DEPARTURE.
--DIVISIONAL DATA----->	32.8	3.8	30.6	-1.5	36.4	-4.3	52.4	1.7	59.9	-0.4	70.5	2.0	74.9	2.1	70.1	-1.1	63.8	-0.3	55.3	2.6	39.7	-3.0	34.9	1.4	51.8	3.0
ALLEGHENY PLATEAU 08																										
OAKLAND 1 SE	30.1		26.1		30.7		47.9		57.0		66.4		69.9		65.5		59.3F		50.7		37.1M		33.8		M 47.9	-0.4
SAVAGE RIVER DAM	30.4M	4.2	28.1M	-0.5	33.1M	-4.0	51.0M	3.6	57.4M	0.1	66.9M	1.4	71.6M	1.9	66.6M	-1.7	MM		50.5M	0.5	36.6M	-3.8	33.3M	2.3	M 47.8	-0.8
SINES DEEP CREEK	27.2M		25.1		30.2M		47.6M		55.4		64.2		68.7M		64.0		58.4M		50.1M		34.3		30.8		M 46.3	
--DIVISIONAL DATA----->	29.2	3.4	26.4	-2.1	31.3	-5.7	48.8	1.8	56.6	0.1	65.8	1.4	70.1	1.5	65.4	-1.7	58.9	-1.6	50.4	1.2	36.0	-3.6	32.6	2.2	47.6	-3.1
DELAWARE																										
NORTHERN 01																										
BEAR 2 SW	M		M		M		M		M		M		M		M		M		M		M		M		M	
WILMINGTON NEW CASTLE CO AP	35.6	4.1	34.5	0.3	40.3	-2.4	54.0	1.6	63.7	1.2	73.2	1.7	79.5	2.9	73.5	-1.5	66.1	-1.6	59.0	3.2	43.9	-2.0	37.6	1.2	55.1	0.7
WILMINGTON PORTER RES	34.5		32.9		39.3		MM		62.2M		72.5		79.1		72.8		66.0M		57.8		44.2MF		36.7		M 54.4	
--DIVISIONAL DATA----->	35.1	3.4	33.7	-0.6	39.8	-2.9	54.0	1.6	63.0	0.4	72.9	1.5	79.3	3.1	73.2	-1.3	66.1	-1.3	58.4	2.6	44.1	-1.7	37.2	0.6	54.7	5.4
SOUTHERN 02																										
DOVER	37.7		35.9		40.6		55.5		64.0		73.5		79.3		73.9		67.7		59.7		45.9		41.2		56.2	-0.6
--DIVISIONAL DATA----->	37.7	3.1	35.9	-0.5	40.6	-3.8	55.5	2.3	64.0	1.1	73.5	1.8	79.3	2.8	73.9	-0.9	67.7	-0.6	59.7	2.4	45.9	-1.8	41.2	2.2	56.2	8.1

TEMPERATURE EXTREMES AND FREEZE DATA (°F)

MARYLAND AND DELAWARE
2013

STATION	HIGHEST	DATE	LOWEST	DATE	LAST SPRING MINIMUM OF										FIRST FALL MINIMUM OF										NUMBER OF DAYS BETWEEN DATES													
					16° OR BELOW		20° OR BELOW		24° OR BELOW		28° OR BELOW		32° OR BELOW		32° OR BELOW		28° OR BELOW		24° OR BELOW		20° OR BELOW		16° OR BELOW		16° OR BELOW	20° OR BELOW	24° OR BELOW	28° OR BELOW	32° OR BELOW									
					DATE	TEMP.	DATE	TEMP.	DATE	TEMP.	DATE	TEMP.	DATE	TEMP.	DATE	TEMP.	DATE	TEMP.	DATE	TEMP.	DATE	TEMP.	DATE	TEMP.														
MARYLAND																																						
SOUTHERN EASTERN SHORE 01																																						
ASSATEAGUE					MSG		MSG			MSG		MSG			MSG		NONE		NONE		NONE		NONE		NONE													
PRINCESS ANNE	96	07/18	9	01/25	01/25	9	01/25	9	02/18	24	04/03	27	04/04	29	11/13	28	11/13	28	11/25	24	NONE		NONE		NONE													
SALISBURY 2N	90	06/25	11	01/25	02/02	16	02/02	16	02/21	24	04/04	26	04/22	32	12/01	27	12/01	27	12/11	23	12/13	20	NONE															
SALISBURY FAA AP	97	07/18	8	01/25	01/27	15	02/02	18	02/18	24	04/04	27	04/04	27	10/26	30	11/13	28	11/14	24	NONE		NONE		NONE													
SNOW HILL 4 N	96	07/19	4	01/25	02/02	16	02/17	19	03/23	24	04/07	26	04/07	26	12/01	25	12/01	25	12/02	23	12/11	20	NONE															
CENTRAL EASTERN SHORE 02																																						
ROYAL OAK 2 SSW	96	07/17	15	01/24	01/24	15	02/10	20	02/21	24	04/04	26	04/04	26	10/26	29	11/09	28	11/25	24	12/13	19	NONE															
LOWER SOUTHERN 03																																						
MECHANICSVILLE 5 NE	92	07/20	10	01/25	02/02	15	02/19	19	04/04	24	04/05	26	04/22	31	10/25	31	11/09	28	11/14	24	11/25	18	NONE															
SOLOMONS	96	07/19	17	01/23	MSG		02/02	19	02/18	24	03/23	28	03/25	32	11/24	26	11/24	26	11/25	24	NONE		NONE		NONE													
UPPER SOUTHERN 04																																						
BALTIMORE WASH INTL AP	97	07/18	11	01/25	01/25	11	02/18	20	02/21	23	04/04	25	04/04	25	10/26	30	11/12	28	11/24	22	11/25	19	NONE															
BELTSVILLE	95	07/20	12	01/23	01/25	16	02/10	19	04/04	23	04/04	23	04/04	30	10/26	29	11/09	27	11/14	23	11/25	19	NONE															
DALECARLIA RSVR	98	07/20	15	01/24	01/25	16	02/18	20	02/21	24	04/04	26	04/05	30	10/26	30	11/13	28	11/14	24	11/25	20	NONE															
LAUREL 3 W	99	07/18	10	01/23	02/02	15	02/18	18	02/21	22	04/04	27	04/04	27	11/04	31	11/13	27	11/24	21	11/25	18	NONE															
MARYLAND SCIENCE CENTER	100	07/19	17	01/23	MSG		01/24	20	02/18	24	02/21	27	03/22	31	11/24	28	11/24	28	12/25	22	NONE		NONE		NONE													
NATL ARBORETUM DC	97	07/18	15	01/23	01/24	16	02/02	17	02/18	22	04/04	27	04/05	32	10/26	32	11/14	27	11/25	23	NONE		NONE		NONE													
OXON HILL	95	07/20	14	01/24	02/03	16	02/03	16	02/21	24	04/04	27	04/05	30	10/26	32	11/14	26	11/24	24	12/25	20	NONE															
UPPER MARLBORO 3 NNW	95	09/13	10	01/24	02/03	14	02/11	19	04/04	23	04/05	28	04/22	32	10/26	28	10/26	28	11/14	22	11/25	20	NONE															
NORTHERN CENTRAL 06																																						
ABERDEEN PHILLIPS FLD	95	07/16	10	01/26	02/03	14	02/19	19	03/15	24	04/05	27	04/05	27	11/09	28	11/09	28	11/25	21	12/11	20	NONE															
BRIGHTON DAM	95	07/19	16	12/14	MSG		MSG		04/05	22	04/05	22	05/16	32	10/26	27	10/26	27	11/14	23	11/25	18	12/13	16														
CONOWINGO DAM	94	07/19	9	01/24	01/28	12	01/28	12	03/25	24	04/05	25	04/05	25	10/27	31	11/13	28	11/25	18	11/25	18	12/12	16														
CYLBURN	93	07/20	11	01/24	02/03	16	02/18	18	02/22	23	04/05	26	04/05	26	11/04	30	11/13	28	11/24	22	11/25	20	NONE															
DAMASCUS 3 SSW	93	07/19	8	01/23	02/02	11	02/18	17	04/04	22	04/04	22	05/14	32	10/26	30	11/04	27	11/24	20	11/24	20	11/25	15														
EMMITSBURG 2 SE	95	09/12	11	01/24	02/11	16	04/05	19	04/05	19	04/05	19	05/14	32	10/26	31	11/09	28	11/21	24	11/25	19	12/12	16														
FREDERICK 2 NNE	70	01/31	11	01/23	02/02	15	02/19	20	02/21	24	03/10	27	03/11	29	NONE		NONE		NONE		NONE		NONE															
MILLERS 4 NE	94	07/18	7	01/23	02/18	15	02/21	19	04/04	21	04/04	21	05/14	31	10/26	29	11/04	26	11/21	23	11/24	19	11/25	16														
SMITHSBURG 2NW	68	12/24	8	01/24	02/04	15	02/09	17	02/10	23	02/10	23	02/10	23	12/08	21	12/08	21	12/08	21	12/11	13	12/11	13														
WESTMINSTER	92	07/10	8	01/24	02/19	15	04/05	20	04/05	20	04/05	20	05/14	32	NONE		NONE		NONE		NONE		NONE															
APPALACHIAN MOUNTAIN 07																																						
CUMBERLAND 2	100	07/20	10	01/24	02/19	16	02/19	16	04/05	22	05/13	28	05/14	32	10/26	26	10/26	26	11/20	24	11/24	20	11/25	15														
FROSTBURG 2	89	07/19	0	02/02	03/22	15	04/05	18	04/07	24	05/14	28	05/15	29	10/24	32	10/26	27	11/04	23	11/13	20	11/24	11														
SHARPSBURG 5 S	96	07/19	7	01/23	02/19	13	04/05	20	04/05	20	04/07	27	05/15	32	10/25	26	10/25	26	11/05	24	11/25	13	11/25	13														
WILLIAMSPORT	97	07/19	10	01/24	02/19	16	02/19	16	04/05	22	04/05	22	04/07	31	10/26	32	11/05	27	11/15	24	11/25	20	NONE															
ALLEGHENY PLATEAU 08																																						
OAKLAND 1 SE	89	07/20	-1	02/02	04/04	15	04/05	18	04/21	23	05/14	25	05/26	31	10/19	31	10/21	28	11/04	22	11/09	20	11/25	7														
SAVAGE RIVER DAM	90	07/18	5	02/02	02/19	11	04/05	20	04/05	20	04/21	28	05/15	30	10/21	32	10/26	28	11/20	23	11/24	17	11/25	13														
SINES DEEP CREEK	87	07/20	1	02/02	03/22	16	04/04	17	04/07	23	05/16	28	05/27	31	09/24	32	10/26	25	11/04	24	11/14	20	11/24	12														

MONTHLY AND SEASONAL COOLING DEGREE DAYS

BASE = 65 DEGREES FAHENHEIT

MARYLAND AND DELAWARE
2013

STATION	JAN	FEB	MAR	APR	MAY	JUN	JUL	AUG	SEP	OCT	NOV	DEC	TOTAL	SEASONAL NORM
MARYLAND														
SOUTHERN EASTERN SHORE 01														
ASSATEAGUE	-	-	-	-	-	-	-	-	-	-	-	-	-	-
PRINCESS ANNE	0	0	0	26E	187E	321E	502E	357E	204E	100E	8E	0	1705E	1092
SALISBURY 2N	0	0	0	38	125	283	-	279	147	64	0	3	-	-
SALISBURY FAA AP	0	0	0	46	145	333	506	333	169	88	8	5	1633	1155
SNOW HILL 4 N	0	0	0	33E	129	304	471	290	173	67	7	2	1476E	1194
CENTRAL EASTERN SHORE 02														
ROYAL OAK 2 SSW	0	0	0	25	114	291	489	292	137	47	2	0	1397	1392
LOWER SOUTHERN 03														
MECHANICSVILLE 5 NE	0	0	0	28	83	222	381	194	94	30	0	0	1032	1093
SOLOMONS	0	0	0	18	117E	341	494	332	178E	72E	1E	0	1553E	-
UPPER SOUTHERN 04														
BALTIMORE WASH INTL AP	0	0	0	26	105	277	445	292	143	51	0	2	1341	1147
BELTSVILLE	0	0	0	23	98	272	419	274	132	4E	0	0	1222E	1109
DALECARLIA RSVR	0	0	0	34	109	274	453	279E	127E	60E	1	1E	1338E	1258
LAUREL 3 W	0	0	0	36	114	288	461	317	173	67	2	0	1458	1271
MARYLAND SCIENCE CENTER	0	0	0	51	179	420	579	445	247	98	4	0	2023	-
NATL ARBORETUM DC	0	0	0	41E	135	342E	502	341E	179	76	0	2E	1618E	1243
OXON HILL	0	0	0	33	113	290	447	289	149	56	0	2	1379	-
UPPER MARLBORO 3 NNW	0	0	0	34	105	279	420	261E	140	48	0	1	1288E	1002
NORTHERN CENTRAL 06														
ABERDEEN PHILLIPS FLD	0	0	0	14	98E	264	430	255	116	44	0	0	1221E	1153
BRIGHTON DAM	-	-	0	6	56	202	353	197	92E	31	0	0	-	-
CONOWINGO DAM	0	-	0	8	51	194	364	193	87	28	0	0	-	-
CYLBURN	0	0	0	27	68	224	371	225	117	42	0	0	1074	-
DAMASCUS 3 SSW	0	0	0	21	83	183	329	182E	90	34	0	0	922E	-
EMMITSBURG 2 SE	0	0	0	16	47	181	342E	198	97	33	0	0	914E	918
FREDERICK 2 NNE	0	0	0	-	-	-	-	-	-	-	-	-	-	-
MILLERS 4 NE	0	0	0	19	78	175	337	189	86	37	0	0	921	790
SMITHSBURG 2NW	0	0	-	-	-	-	-	-	-	-	-	0	-	-
WESTMINSTER	0	0	0	27E	105E	201E	372E	93E	-	-	-	-	-	-
APPALACHIAN MOUNTAIN 07														
CUMBERLAND 2	0	0	0	36	91	236	405	257	103	47	0	0	1175	877
FROSTBURG 2	0	0	0	8	33	88	173E	73	46	22	0	0	443E	344
SHARPSBURG 5 S	0	0	0	15	56E	186	343	178	95	36	0	0	909E	-
WILLIAMSPORT	0	0	0	10E	55E	233E	353E	220E	108	40	0	0	1019E	-
ALLEGHENY PLATEAU 08														
OAKLAND 1 SE	0	0	0	3	28	90	181	73	42	8	0	0	425	316
SAVAGE RIVER DAM	0	0	0	4E	30E	93E	217E	86E	48E	3E	0	0	481E	414
SINES DEEP CREEK	0	0	0	2E	18	43	149E	45	31E	5E	0	0	293E	-
DELAWARE														
NORTHERN 01														
BEAR 2 SW	-	-	-	-	-	-	-	-	-	-	-	-	-	-
WILMINGTON NEW CASTLE CO AP	0	0	0	17	90	253	455	270	107	49	0	0	1241	1125
WILMINGTON PORTER RES	0	0	0	28E	74E	233	446	250	94E	46	0	0	1171E	-
SOUTHERN 02														

MARYLAND AND DELAWARE
2013

MONTHLY AND SEASONAL COOLING DEGREE DAYS

BASE = 65 DEGREES FAHENHEIT

STATION	JAN	FEB	MAR	APR	MAY	JUN	JUL	AUG	SEP	OCT	NOV	DEC	TOTAL	SEASONAL NORM
DOVER	0	0	0	31	101	263	450	282	131	54	0	1	1313	1262

TOTAL PAN EVAPORATION AND WIND MOVEMENT

STATION		JAN	FEB	MAR	APR	MAY	JUN	JUL	AUG	SEP	OCT	NOV	DEC	ANNUAL
MARYLAND														
UPPER SOUTHERN 04														
BELTSVILLE	WIND	-	-	-	1958	1710	1647	1562	1350	1308	-	-	-	-
	EVAP	-	-	-	4.82	5.33	6.29E	9.10	5.28	5.38	-	-	-	-
	MAX TEMP	-	-	47.0	70.5	76.9	85.8	90.6	80.4	78.3	77.0	-	-	-
	MIN TEMP	-	-	47.0	45.4	53.7	64.4	69.7	64.0	55.2	50.0	-	-	-
UPPER MARLBORO 3 NNW														
	WIND	-	-	-	-	-	-	-	-	-	-	-	-	-
	EVAP	-	-	-	-	-	-	-	-	-	-	-	-	-
	MAX TEMP	-	-	-	-	-	-	-	-	-	-	-	-	-
	MIN TEMP	-	-	-	-	-	-	-	-	-	-	-	-	-
ALLEGHENY PLATEAU 08														
SAVAGE RIVER DAM														
	WIND	-	-	-	-	-	-	-	-	-	-	-	-	-
	EVAP	-	-	-	-	-	-	-	-	-	-	-	-	-
	MAX TEMP	-	-	-	-	-	-	-	-	-	-	-	-	-
	MIN TEMP	-	-	-	-	-	-	-	-	-	-	-	-	-

STATION INDEX

STATION	INDEX NO.	DIVISION NO.	COUNTY	LATITUDE	LONGITUDE	ELEVATION FEET	YEARS OF RECORD			OPENED OR CLOSED DURING YR		SEE REFERENCE NOTES
							TEMP.	PRECIP.	EVAP.	MONTH OPENED	MONTH CLOSED	
MARYLAND												
ABERDEEN PHILLIPS FLD	0015	06	HARFORD	39 28	76 10W	57	87	87	0			CH
ASSATEAGUE	0335	01	WORCESTER	38 4	75 13W	10	45	45	0			H
BALTIMORE WASH INTL AP R	0465	04	ANNE ARUNDEL	39 10	76 41W	156	75	75	0			HJ
BELTSVILLE	0700	04	PRINCE GEORGE'S	39 2	76 56W	145	73	73	72			CH
BRIGHTON DAM	1125	06	MONTGOMERY	39 11	77 0W	330	13	50	0			H
CONOWINGO DAM	2060	06	HARFORD	39 39	76 11W	40	78	78	0			H
CUMBERLAND 2	2282	07	ALLEGANY	39 39	78 45W	730	40	40	0			H
CYLBURN	2308	06	BALTIMORE	39 21	76 39W	235	11	11	0			H
DALECARLIA RSVR	2325	04	DISTRICT OF COLUMBIA	38 56	77 7W	150	66	66	0			H
DAMASCUS 3 SSW	2336	06	MONTGOMERY	39 16	77 14W	700	21	21	0			H
EMMITSBURG 2 SE	2906	06	FREDERICK	39 41	77 17W	403	58	58	0			H
FREDERICK 2 NNE	3353	06	FREDERICK	39 26	77 24W	280	10	10	0			H
FROSTBURG 2	3415	07	ALLEGANY	39 40	78 56W	2170	42	42	0			H
LAUREL 3 W	5111	04	PRINCE GEORGE'S	39 5	76 54W	400	113	116	0			H
MARYLAND SCIENCE CENTER R	5718	04	BALTIMORE (CITY)	39 17	76 37W	20	16	15	0			H
MECHANICSVILLE 5 NE	5865	03	ST. MARY'S	38 28	76 42W	100	40	49	0			H
MILLERS 4 NE	5934	06	CARROLL	39 43	76 48W	860	26	26	0			CH
NATL ARBORETUM DC	6350	04	DISTRICT OF COLUMBIA	38 55	76 58W	50	66	66	0			H
OAKLAND 1 SE	6620	08	GARRETT	39 25	79 24W	2420	115	115	0			H
OXON HILL	6800	04	PRINCE GEORGE'S	38 47	76 60W	120	12	12	0			H
PRINCESS ANNE	7330	01	SOMERSET	38 13	75 41W	20	118	118	0			H
ROYAL OAK 2 SSW	7806	02	TALBOT	38 43	76 11W	10	66	66	0			H
SALISBURY 2N	8004	01	WICOMICO	38 24	75 36W	20	2	2	0			H
SALISBURY FAA AP	8005	01	WICOMICO	38 20	75 31W	48	66	66	0			H
SAVAGE RIVER DAM	8065	08	GARRETT	39 31	79 8W	1495	63	69	43			CH
SHARPSBURG 5 S	8207	07	WASHINGTON	39 24	77 43W	500	16	16	0			H
SINES DEEP CREEK	8315	08	GARRETT	39 31	79 25W	2040	39	39	0			H
SMITHSBURG 2NW	8371	06	WASHINGTON	39 40	77 35W	670	13	13	0			H
SNOW HILL 4 N	8380	01	WORCESTER	38 14	75 23W	30	98	98	0			H
SOLOMONS	8405	03	CALVERT	38 19	76 27W	12	103	103	0			H
UPPER MARLBORO 3 NNW	9070	04	PRINCE GEORGE'S	38 51	76 46W	130	57	57	56			H
WESTMINSTER	9440	06	CARROLL	39 34	76 59W	750	31	31	0			H
WILLIAMSPORT	9570	07	WASHINGTON	39 37	77 51W	360	16	48	0			H
DELAWARE												
BEAR 2 SW	1200	01	NEW CASTLE	39 36	75 44W	80	10	10	0		FEB	H
DOVER	2730	02	KENT	39 15	75 31W	30	111	111	0			H
WILMINGTON NEW CASTLE CO AP R	9595	01	NEW CASTLE	39 40	75 36W	79	66	66	0			HJ
WILMINGTON PORTER RES	9605	01	NEW CASTLE	39 46	75 32W	270	82	83	0			H

REFERENCE NOTES

STATION NAMES: Name of the city, town or locality. Figures and letters following the station names indicate the distance in miles and direction from the post office or town community center.

DIVISIONS: Areas within a state of similar climatological characteristics. Division averages are calculated using data from stations that record temperature and/or precipitation. Station Precipitation totals flagged with an 'F' or 'M' are excluded from the Divisional Average calculations of precipitation. Stations with monthly Temperature averages flagged with an 'F' or 'M' are included in the Divisional Average if there are no more than 9 flagged or missing daily values in the month, else they are excluded from the divisional average for temperature.

NORMALS: The average value of the meteorological element over a time period. Effective 1 January 2002, the averaging period is 1971 to 2000. The normals for National Weather Service localities have been adjusted so as to be representative for the current observation site.

TEMPERATURE EXTREMES AND FREEZE DATA: Spring minimum dates are obtained from data for January through June; Fall dates are from July through December data. "NONE" indicates temperature threshold not reached. "MSG" indicates available data insufficient to determine date.

MONTHLY DEGREE DAY TOTALS: One heating (cooling) degree day is accumulated for each whole degree that the daily mean temperature is below (above) 65 degrees Fahrenheit.

SOIL TEMPERATURE EXTREMES: The highest and lowest Max and Min temperature for each month and the year.

WIND: (As shown in the "Evaporation and Wind" table) the total wind movement in miles over the evaporation pan as determined by an anemometer recorder located 6-8 inches above the pan.

SYMBOLS AND LETTERS USED IN THE DATA TABLES

- No record. Data not recorded, determined unreliable by quality control checks, or not received in time for publication.
- * Equipment gage not read. Precipitation is included in the amount following asterisks. Time distribution not known.
- // Equipment gage equipped with a windshield.
- A Amount of precipitation is the total of observer's entries for the current month. It may include precipitation that occurred during the previous month. Refer to monthly bulletins to determine date of last reading.
- E Normalized HDD/CDD Calculation. E is appended to the HDD/CDD Calculation when 1-9 individual daily TMAX and/or TMIN values are missing and a Normalized HDD/CDD Calculation is provided. M appears alone if 10 or more are missing or flagged.
- F Monthly Calculation Flagged Value. F is appended to the average of the monthly station values when 1-9 daily observations were determined to be invalid during the Quality Control process.
- M Insufficient or partial data. M is appended to average and/or total values computed with 1-9 daily values missing. M appears alone if 10 or more daily values are missing or flagged.
- R Amounts from recording rain gage.
- T Trace. An amount too small to measure.

SYMBOLS AND LETTERS USED IN THE STATION INDEX TABLE

Thermometers located in rooftop shelter.

C Station is equipped with a recording rain gage (R), but values in this bulletin are from a non-recording rain gage unless indicated by an R.

G Observations appear in "Soil Temperatures" table.

H Observations appear in "Snowfall and Snow on the Ground" table in monthly "Climatological Data" publication.

J Station also published as a "Local Climatological Data" bulletin.

Seasonal Tables: Monthly and seasonal snowfall and heating degree days for the 12 months ending with the June data are published in the July issue of "Climatological Data".

Cooling degree days for the calendar year are published in the "Climatological Data Annual Summary".

Additional precipitation data are contained in the "Hourly Precipitation Data" bulletin for each state.

Information concerning the history of changes in locations, exposure, etc. of substations is kept on file at the National Climatic Data Center. Historical information of regular National Weather Service Offices may be obtained from the "Local Climatological Data" annual publication. The contents of this publication may be reprinted or otherwise used freely, with proper credit to the National Climatic Data Center. The data are also available digitally.

ERRATA

Beginning in January of 2011, CD Publications are produced from the Global Historical Climatology Network data set. (<http://www.ncdc.noaa.gov/oa/climate/ghcn-daily/>) The GHCND data Version is printed on first page of the publication.

New flags were added to indicate:

E Normalized HDD/CDD, Evap, and Wind Movement Calculations in 2011, previously was B.

F Monthly calculation flagged value.

Station metadata is provided by NCDC's Product Development Branch from the Historical Observing Metadata Repository: <http://www.ncdc.noaa.gov/homr>

As of the 2011 Data-Year, Station and Climate Division Maps are no longer being included in the CD Publications. NCDC's Product Development Branch provides updated Station Maps for various data networks via the Historical Observing Metadata Repository: <http://www.ncdc.noaa.gov/homr>.

Beginning with the January 2013 CD Publication, monthly mean temperature calculations have changed to the National Data Stewardship Team standard. Monthly maximum and minimum temperatures are not rounded until after the monthly mean temperature is calculated. This is the most accurate outcome, but may be slightly different from the mean derived from rounded monthly maximum and minimum.

Processing Updates and Errata: The CD Publications are periodically reproduced to include the addition of late reports and reported corrections. The GHCND data version noted on the cover of the publication provides the generation date.

The climate division temperature and precipitation values in this publication are based on simple averages from the current set of NWS-Designated Open and Published COOP and First Order Sites within each division. These values differ from those found in NCDC's nClimDiv product. Beginning in February 2014, the nClimDiv product is used by NCDC's Climate Monitoring Branch and in its monthly climate reports. For more details on nClimDiv, please go to <http://www.ncdc.noaa.gov/monitoring-references/maps/us-climate-divisions.php>.

These and other publications are available from the National Climatic Data Center

Hourly Precipitation Data

This publication contains hourly precipitation amounts obtained from recording rain gages located at National Weather Service, Federal Aviation Administration, and cooperative observer stations. Published data are displayed in inches and tenths or inches and hundredths at local standard time. HPD includes maximum precipitation for nine (9) time periods from 15 minutes to 24 hours, for selected stations.

Climatological Data

Monthly editions contain station daily maximum and minimum temperatures and precipitation. Some Stations provide daily snowfall, snow depth, evaporation, and soil temperature data. Each edition also contains monthly summaries for heating and cooling degree days (65 degree F base). The July issue contains a recap of monthly heating degree days and snow data for the preceding July through June.

The Annual issue contains monthly and annual averages of temperature, precipitation, temperature extremes, freeze data, soil temperatures, evaporation, and a recap of monthly cooling degree days.

Storm Data

Monthly issues contain a chronological listing, by states, of occurrences of storms and unusual weather phenomena. Reports contain information on storm paths, deaths, injuries, and property damage. An "Outstanding storms of the month" section highlights severe weather events with photographs, illustrations, and narratives. The December issue includes annual tornado, lightning, flash flood, and tropical cyclone summaries.

Monthly Climatic Data for the World

This publication contains monthly means for temperature, pressure, precipitation, vapor pressure, and sunshine for approximately 2,000 surface data collection stations worldwide and monthly mean upper air temperatures, dew point depressions, and wind velocities for approximately 500 observing sites.

Local Climatological Data

LCD publications summarize temperature, relative humidity, precipitation, cloudiness, wind speed and direction observations for several hundred cities in the U.S. and its territories. Each monthly publication also contains 3 hourly weather observations for that month and a hourly summary of precipitation. Annual LCD publications contain a summary of the past calendar year as well as historical averages and extremes.

For Information Call:

(828) 271-4800 Option 2

(828) 271-4010 (TDD)

(828) 271-4876 (Fax)

NOAA\National Climatic Data Center
Attn: User Engagement & Services Branch
151 Patton Avenue
Asheville, NC 28801-5001

Customer Services Number: (828) 271-4800, option 2
TDD : (828) 271-4010
Fax number: (828) 271-4876

NCDC now offers free online access to the *Climatological Data* publication.
Go to : www.ncdc.noaa.gov and choose Most Popular.